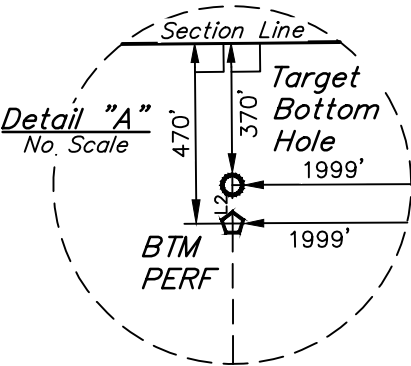


T1N, R66W,  
6th P.M.

**BASIS OF BEARINGS**  
BASIS OF BEARINGS IS A G.P.S. OBSERVATION

**BASIS OF ELEVATION**  
HUBBS TRIANGULATION STATION LOCATED IN THE NE 1/4 OF SECTION 21, T1N, R64W, 6th. P.M., TAKEN FROM THE KEENESBURG, QUADRANGLE, COLORADO, WELD COUNTY, 7.5 MINUTE QUAD (TOPOGRAPHIC MAP) PUBLISHED BY THE UNITED STATES DEPARTMENT OF THE INTERIOR, GEOLOGICAL SURVEY. SAID ELEVATION IS MARKED AS BEING 5168 FEET.



LINE TABLE		
LINE	DIRECTION	LENGTH
L1	N39°35'42"E	1902.95'
L2	N00°18'56"W	100.00'

PDOP = 1.4

NAD 83 (SURFACE LOCATION)	
LATITUDE = 40°00'43.88" (40.012189)	
LONGITUDE = 104°48'10.58" (104.802939)	
NAD 27 (SURFACE LOCATION)	
LATITUDE = 40°00'43.94" (40.012206)	
LONGITUDE = 104°48'08.68" (104.802411)	
NAD 83 (ENTRY POINT)	
LATITUDE = 40°00'58.34" (40.016206)	
LONGITUDE = 104°47'54.94" (104.798594)	
NAD 27 (ENTRY POINT)	
LATITUDE = 40°00'58.40" (40.016222)	
LONGITUDE = 104°47'53.04" (104.798067)	
NAD 83 (BTM PERF)	
LATITUDE = 40°02'33.85" (40.042736)	
LONGITUDE = 104°47'55.11" (104.798642)	
NAD 27 (BTM PERF)	
LATITUDE = 40°02'33.91" (40.042753)	
LONGITUDE = 104°47'53.21" (104.798114)	
NAD 83 (TARGET BOTTOM HOLE)	
LATITUDE = 40°02'34.84" (40.043011)	
LONGITUDE = 104°47'55.11" (104.798643)	
NAD 27 (TARGET BOTTOM HOLE)	
LATITUDE = 40°02'34.90" (40.043027)	
LONGITUDE = 104°47'53.22" (104.798116)	

CERTIFICATE  
THIS IS TO CERTIFY THAT THE ABOVE PLAT WAS PREPARED FROM FIELD NOTES OF ACTUAL SURVEYS MADE BY ME OR UNDER MY SUPERVISION, AND THAT THE SAME ARE TRUE AND CORRECT TO THE BEST OF MY KNOWLEDGE AND BELIEF.

REGISTERED LAND SURVEYOR  
REGISTRATION NO. 28285  
STATE OF COLORADO  
02-05-18

REV: 5 02-05-18 K.B. (BP ADD & TBH CHANGE)

GREAT WESTERN OPERATING COMPANY

DITTMER KE 20-033HN  
NE 1/4 NW 1/4, SECTION 32, T1N, R66W, 6th P.M.  
WELD COUNTY, COLORADO



UELS, LLC  
Corporate Office \* 85 South 200 East  
Vernal, UT 84078 \* (435) 789-1017

SURVEYED BY: DALLAS NIELSEN, B.C.	SURVEY DATE: 04-03-15
DRAWN BY: J.W.	DATE DRAWN: 04-07-15
SCALE: 1" = 1000'	

WELL LOCATION PLAT