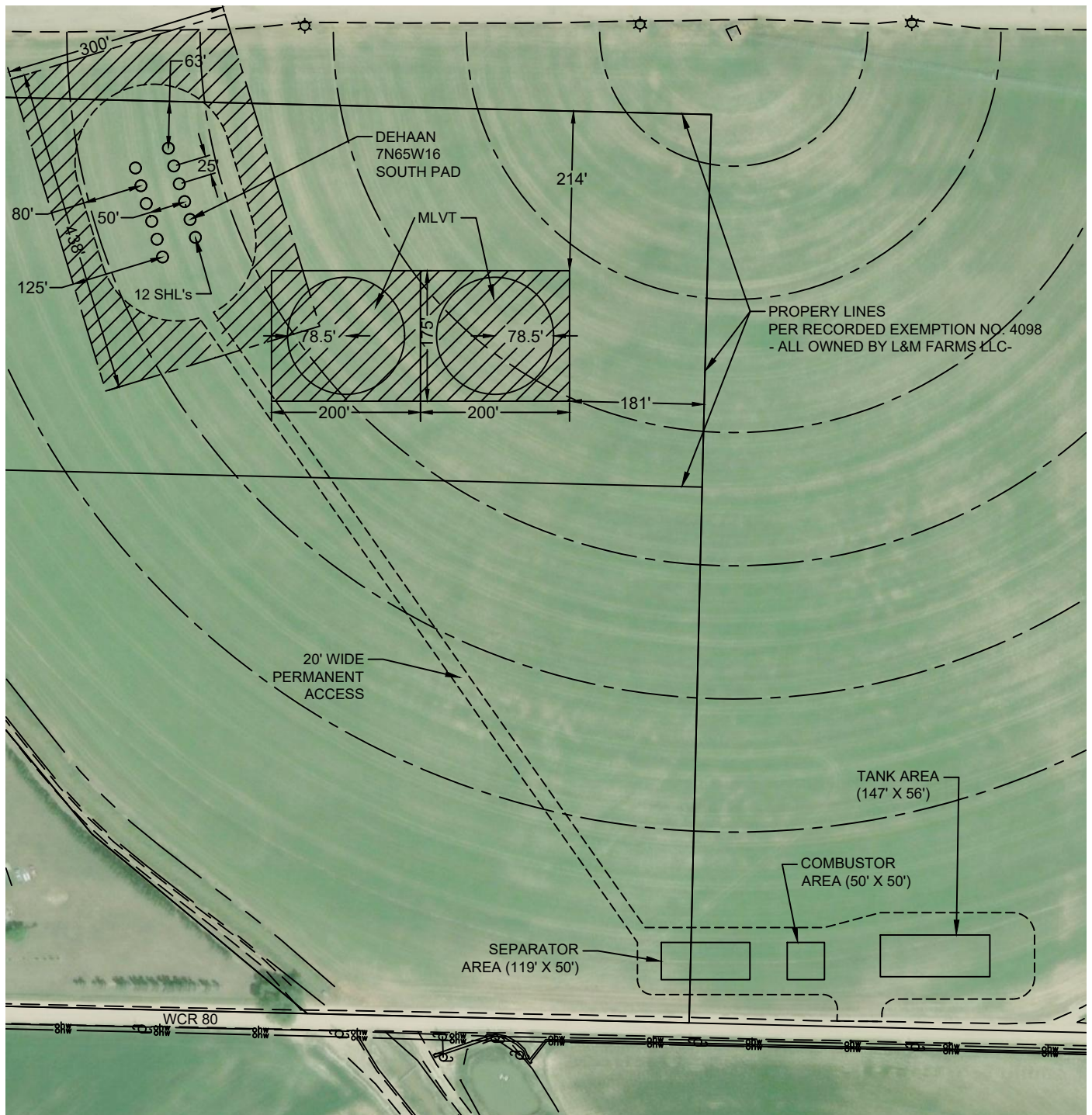




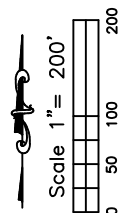
Washburn Land Surveying  
www.WashburnSurveying.com  
970-232-9645

# FACILITY EXHIBIT DEHAAN 7N65W16 SOUTH PAD

SECTION: 17  
TOWNSHIP: 7N  
RANGE: 65W  
6TH P.M.  
WELD COUNTY, CO



RECLAIMED AREA(S)  
TOTAL DISTURBED AREA OF LOCATION = ± 6.2 ACRES  
TOTAL SIZE OF AREA AFTER RECLAMATION = ± 3.1 ACRES



DATE: 3-22-2018

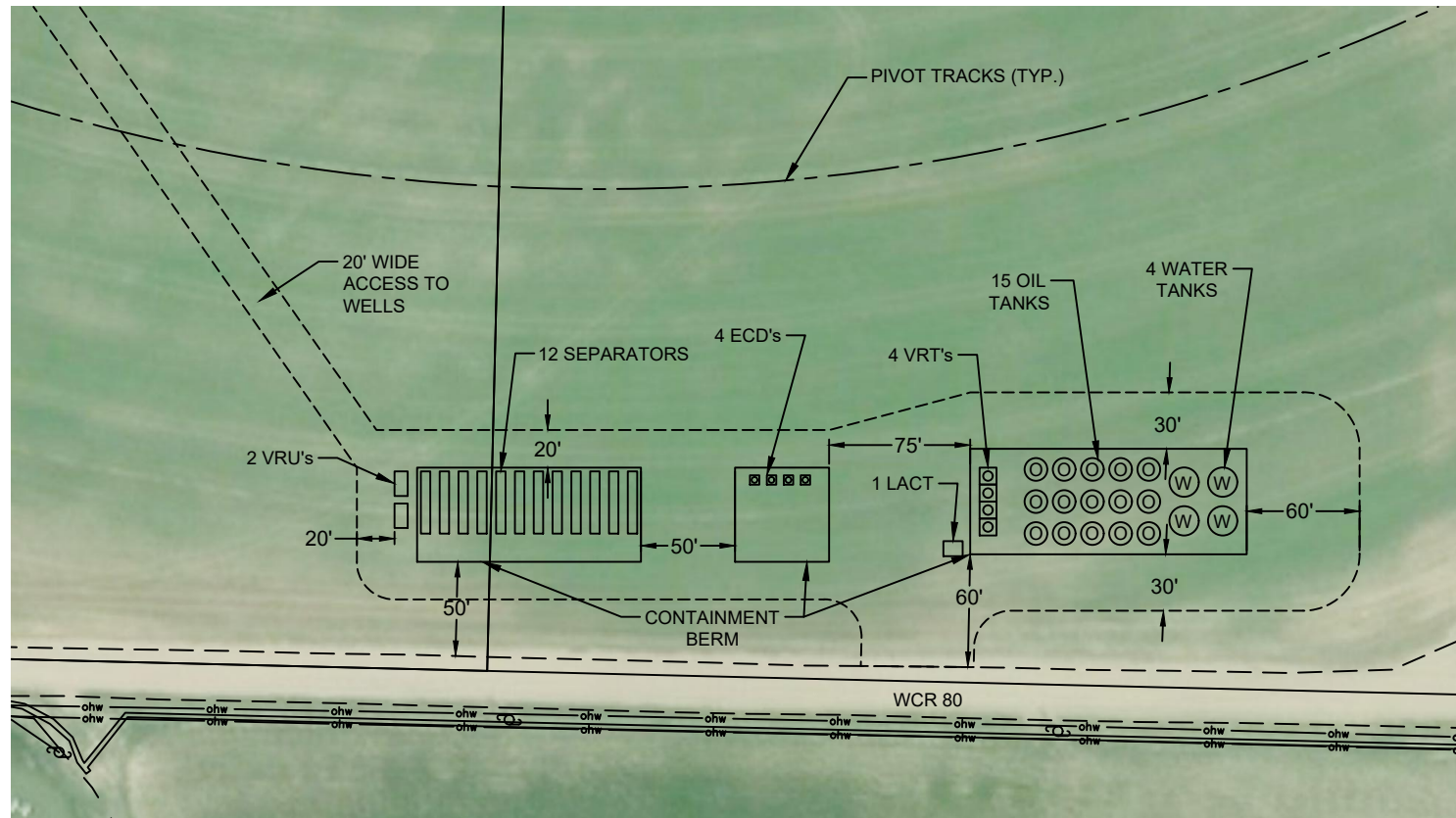
SHEET 1 OF 2



Washburn Land Surveying  
www.WashburnSurveying.com  
970-232-9645

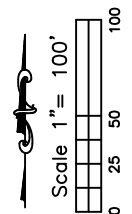
# FACILITY EXHIBIT DEHAAN 7N65W16 SOUTH PAD

SECTION: 17  
TOWNSHIP: 7N  
RANGE: 65W  
6TH P.M.  
WELD COUNTY, CO



## Notes:

SEPARATORS - 33' X 5' spaced 5' apart  
VRU's - 13' X 7' spaced 4' apart and 5' outside of containment berm  
ECD's - 3' diameter on a 5'X5' base spaced 4' apart  
VRT's - 5' diameter on a 9' X 9' base, 15' from tanks  
WATER TANKS - 15.5' diameter  
OIL TANKS - 12' diameter  
LACT - 10.25' X 8' and 5' outside of containment berm



DATE: 3-22-2018

SHEET 2 OF 2