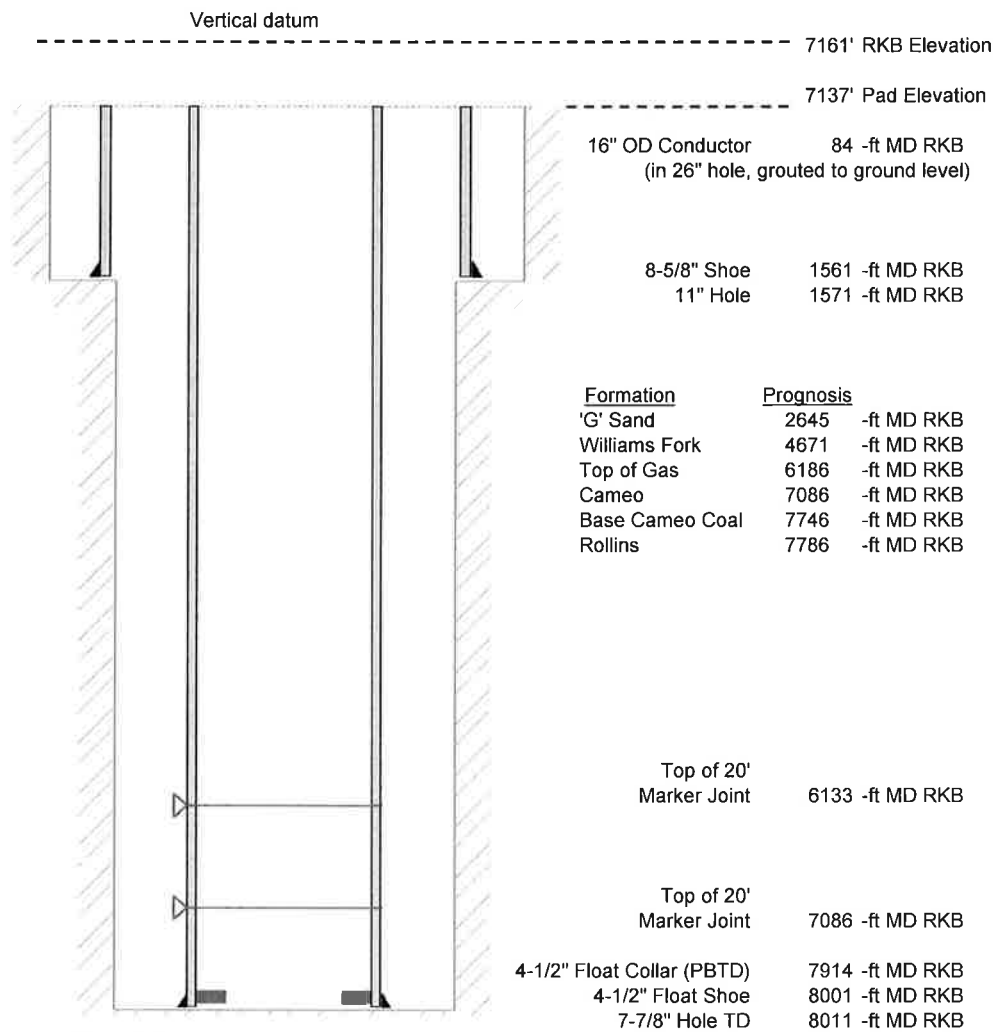


Laramie Energy, LLC
 Nichols 0994-13-20W
 Slot B-2
 H&P 290 (24-ft KB)

API # : 077-10409-00
 SW/4 NE/4 S24/T9S/R94W/6th PM
 Mesa County, CO
 Date of diagram : 2/3/2018



Formation	Prognosis
'G' Sand	2645 -ft MD RKB
Williams Fork	4671 -ft MD RKB
Top of Gas	6186 -ft MD RKB
Cameo	7086 -ft MD RKB
Base Cameo Coal	7746 -ft MD RKB
Rollins	7786 -ft MD RKB

Top of 20' Marker Joint	6133 -ft MD RKB
Top of 20' Marker Joint	7086 -ft MD RKB
4-1/2" Float Collar (PBSD)	7914 -ft MD RKB
4-1/2" Float Shoe	8001 -ft MD RKB
7-7/8" Hole TD	8011 -ft MD RKB

Cementing details

8-5/8" 24# J55 STC Surface Csg	Lead	Tail
Density (ppg)	12.0	12.5
Volume (sx)	168	120
Yield (cf/sx)	2.52	2.22
Top (ft RKB)	24	1024
Bottom (ft RKB)	1024	1561
Returns (full or partial)	Full	Full

4-1/2" 11.6# L-80 LTC Prod Csg	Lead	Tail
Density (ppg)	12.7	13.5
Volume (sx)	858	381
Yield (cf/sx)	1.97	1.90
Est Top (ft RKB)	1026	5986
Est Bottom (ft RKB)	5559	8001
Returns (full or partial)	Full	Full

Displacement
8.3 ppg
124 bbls

Other Remarks : Surface-24 bbls cement to surface Production-24 bbls spacer to surface