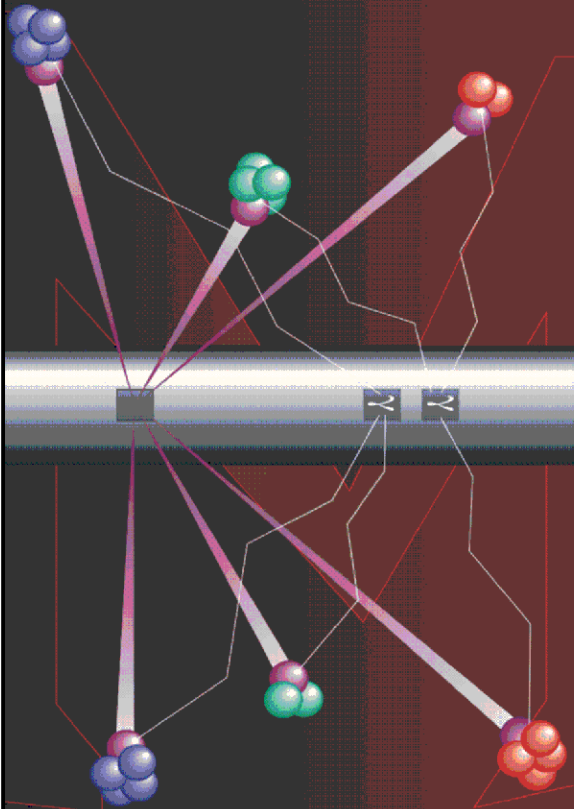


Pulsed Neutron Formation Evaluation



RESERVOIR PERFORMANCE MONITOR NEO Neutron Emulated Openhole

COMPANY LARAMIE ENERGY II, LLC

WELL NICHOLS 0994-13-21W

FIELD VEGA

COUNTY MESA STATE COLORADO

LOCATION:

SEE REMARKS

SEC 24 TWP 9S RGE 94W

ELEVATIONS:

KB 7161 FT DF GL 7137 FT

DATE 22-MAR-2018 ECC 133009

IN MAKING INTERPRETATIONS OF LOGS OUR EMPLOYEES WILL GIVE THE CUSTOMER THE BENEFIT OF THEIR BEST JUDGEMENT. BUT SINCE ALL INTERPRETATIONS ARE OPINIONS BASED ON INFERENCES FROM ELECTRICAL OR OTHER MEASUREMENTS, WE CANNOT, AND WE DO NOT GUARANTEE THE ACCURACY OR CORRECTNESS OF ANY INTERPRETATION. WE SHALL NOT BE LIABLE OR RESPONSIBLE FOR ANY LOSS, COST, DAMAGES, OR EXPENSES WHATSOEVER INCURRED OR SUSTAINED BY THE CUSTOMER RESULTING FROM ANY INTERPRETATION MADE BY ANY OF OUR EMPLOYEES.

COMPUTATION PARAMETERS

COMPUTATION	LOGS USED: <u>RPM-C</u>		PROGRAM: <u>NEO</u>
	CENTER: <u>HOUSTON</u>	LOG ANALYST: <u>KIMBERLY ELLSWORTH</u>	DATE: <u>22-MAR-2018</u>
FIELD DATA	LOCATION: <u>GRAND JUNCTION</u>	ENGINEER: <u>R. ZUNIGA</u>	DATE: <u>18-MAR-2018</u>

FROM	TO								
<u>2410 FT</u>	<u>7783 FT</u>								

REMARKS

LOCATION: SHL: 1779' FNL & 2787' FEL
BHL: 151' FNL & 1606' FEL

TRAINING WELL:
NICHOLS 24-06W

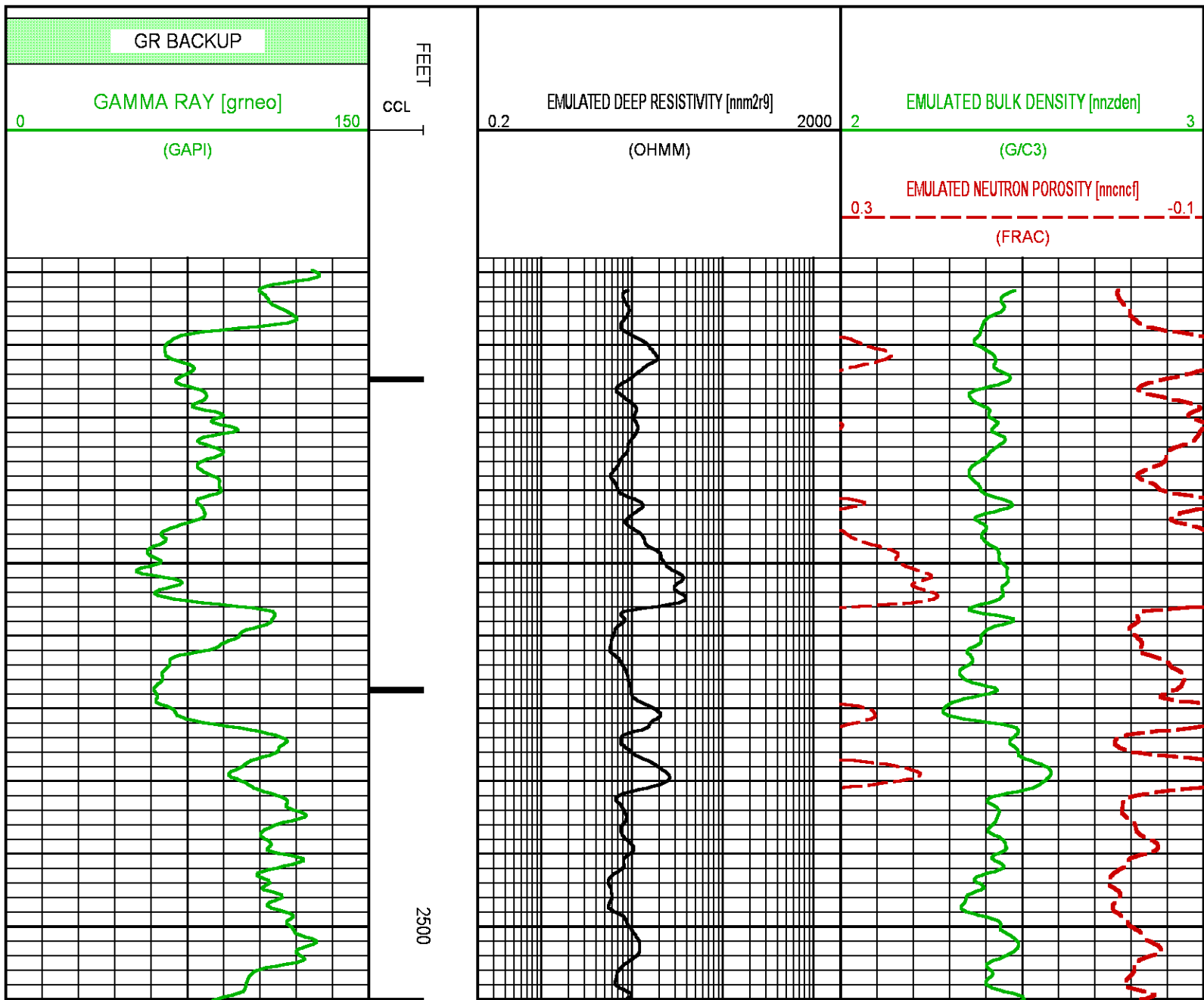
ANY ERRORS IN THE TRAINING WELL OPENHOLE DATA CAN PERETUATE THROUGH AS ERROR IN THE EMULATED RESULTS

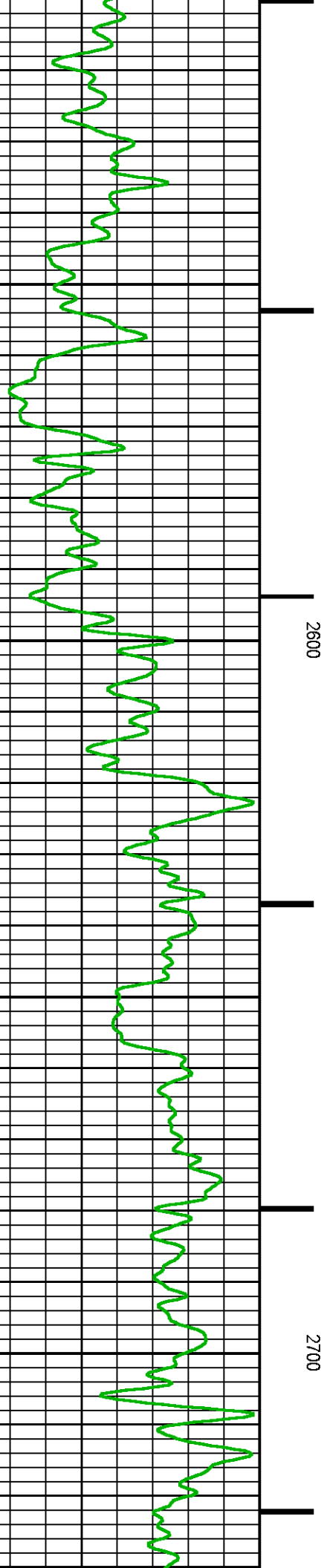
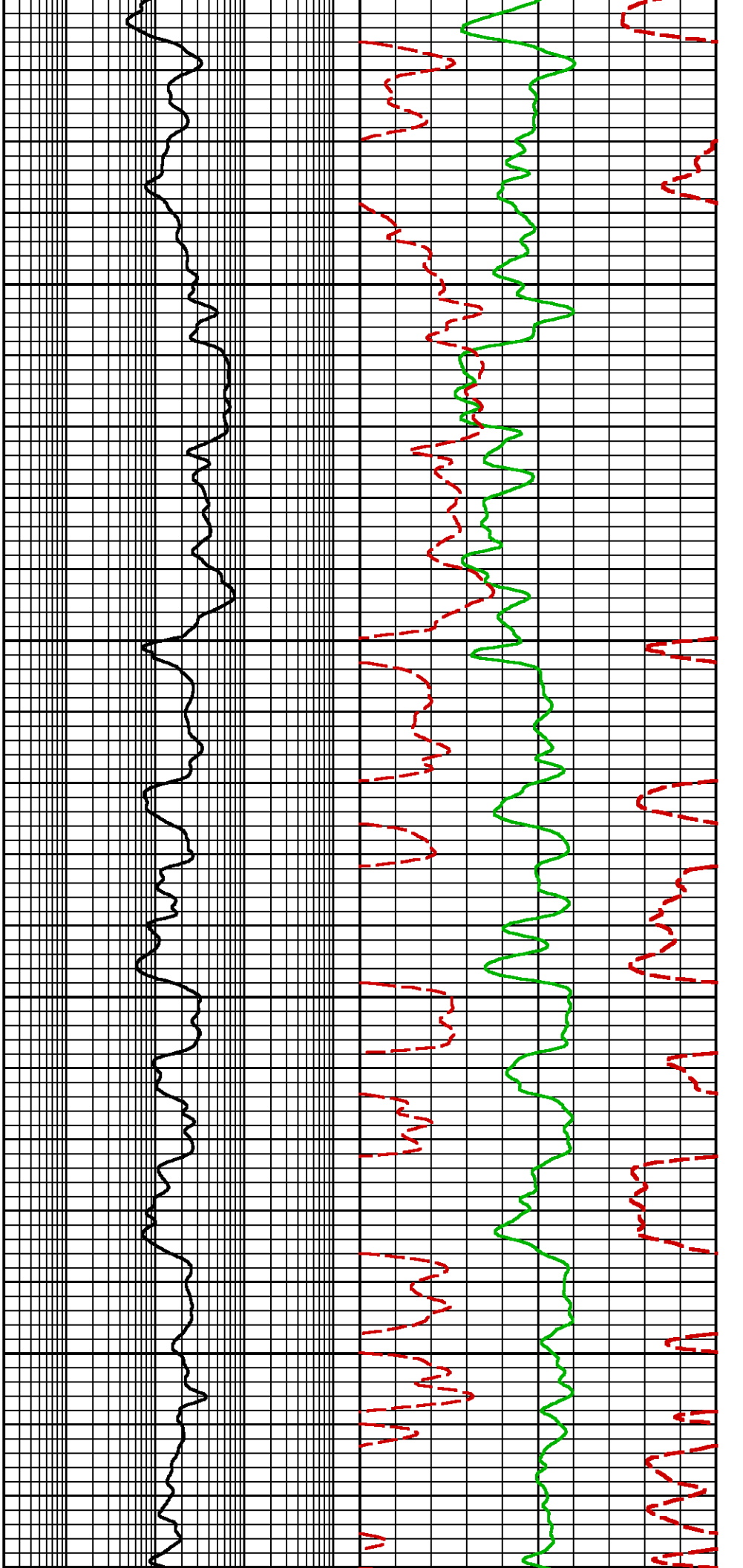
BOND LOG IS DEPTH REFERENCE LOG

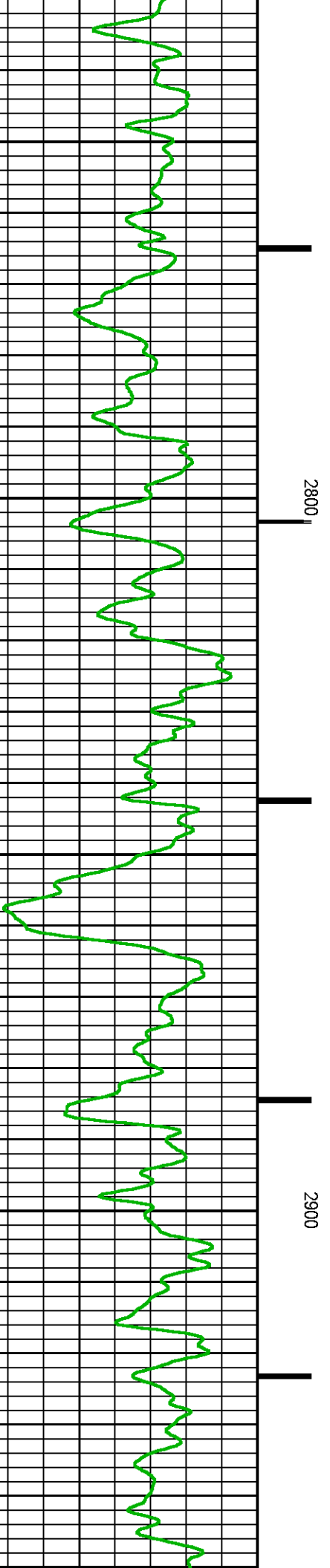
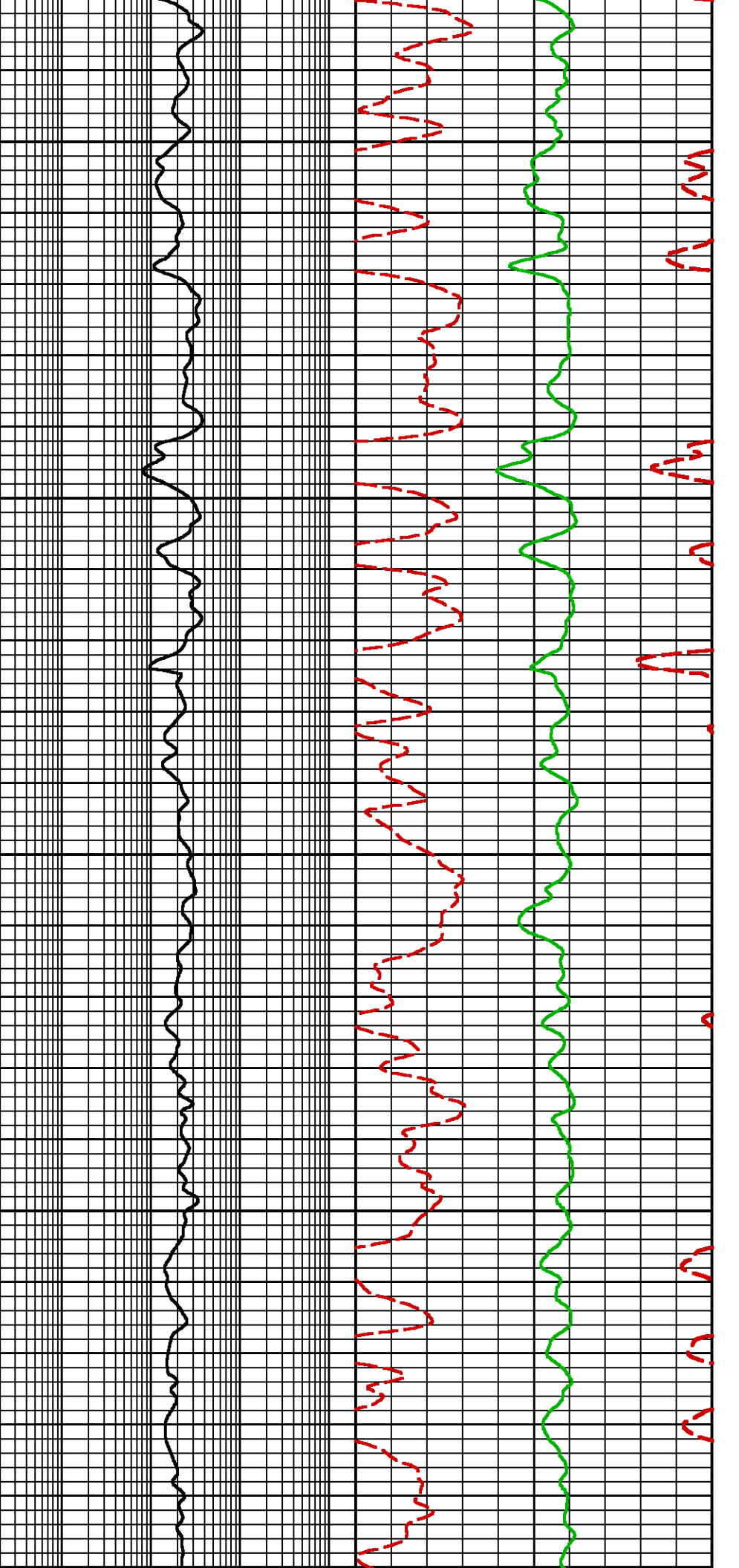
NEO RESULTS FOR NICHOLS 13-21W (G-SAND)

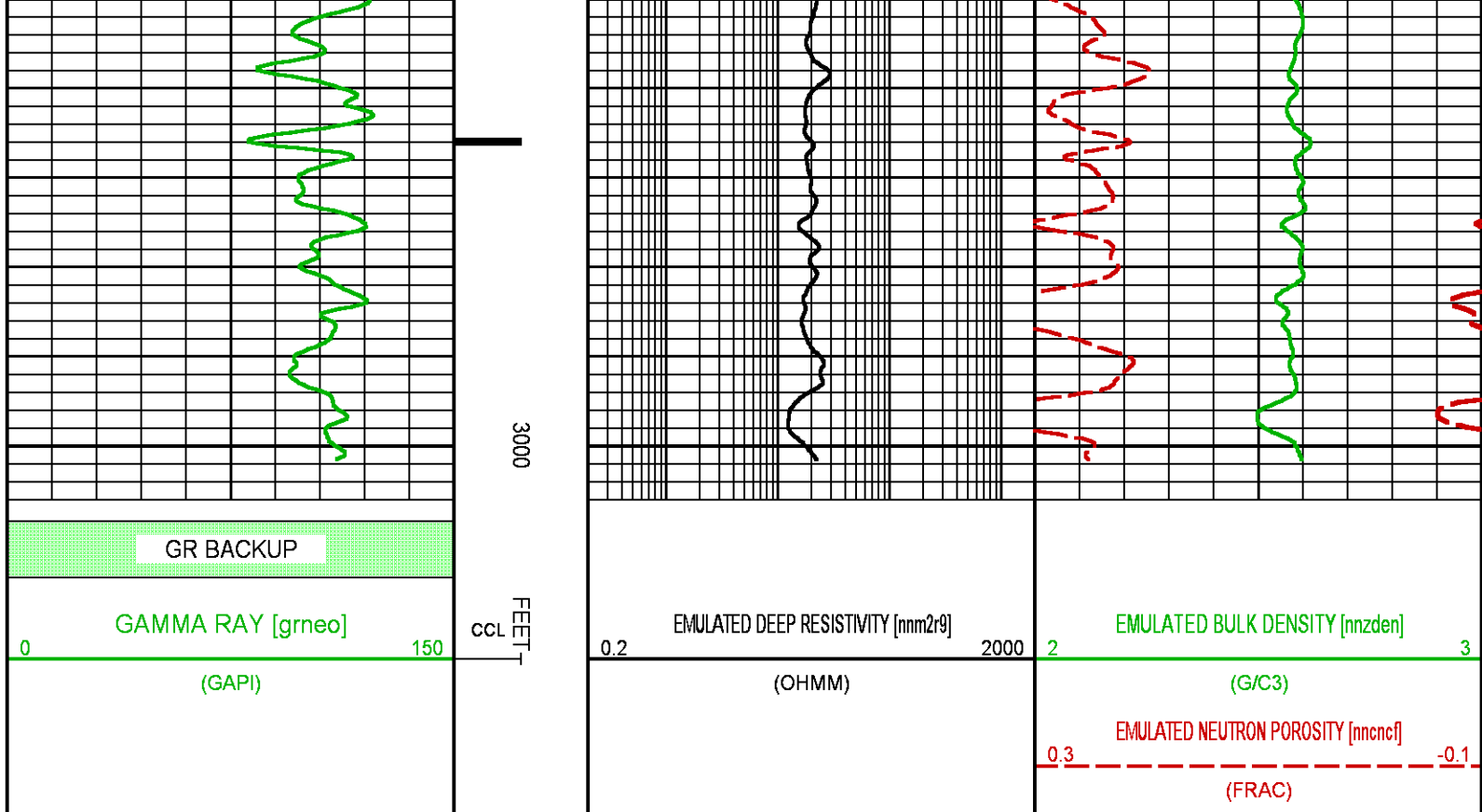
Project : NA
User : ellskima
Presentation : BHI3BKZH12:C:\Ape_Projects\laramie_nichols_13_21w\NEO_PRESENTATION_LARAMIE_G-Sand.pdf [5"/100' Scale]
Plot Interval : 2409.75 - 3005 Feet

Data File 1 : F1 : BHI3BKZH12:C:\Ape_Projects\laramie_nichols_13_21w\Merged_Set_Final.xtf
Created On : N/A
Company : LARAMIE ENERGY
Well : NICHOLS 0994-13-21W
Field : VEGA
File Interval : 2409.75 - 7781.75 Feet
OCT : NA



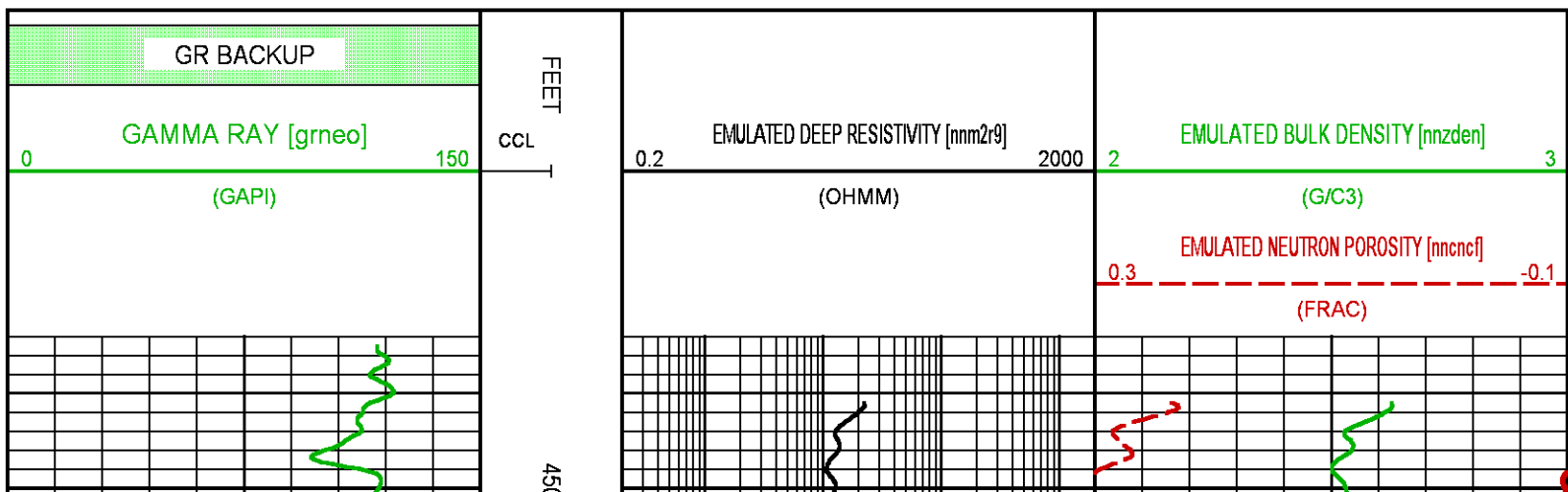


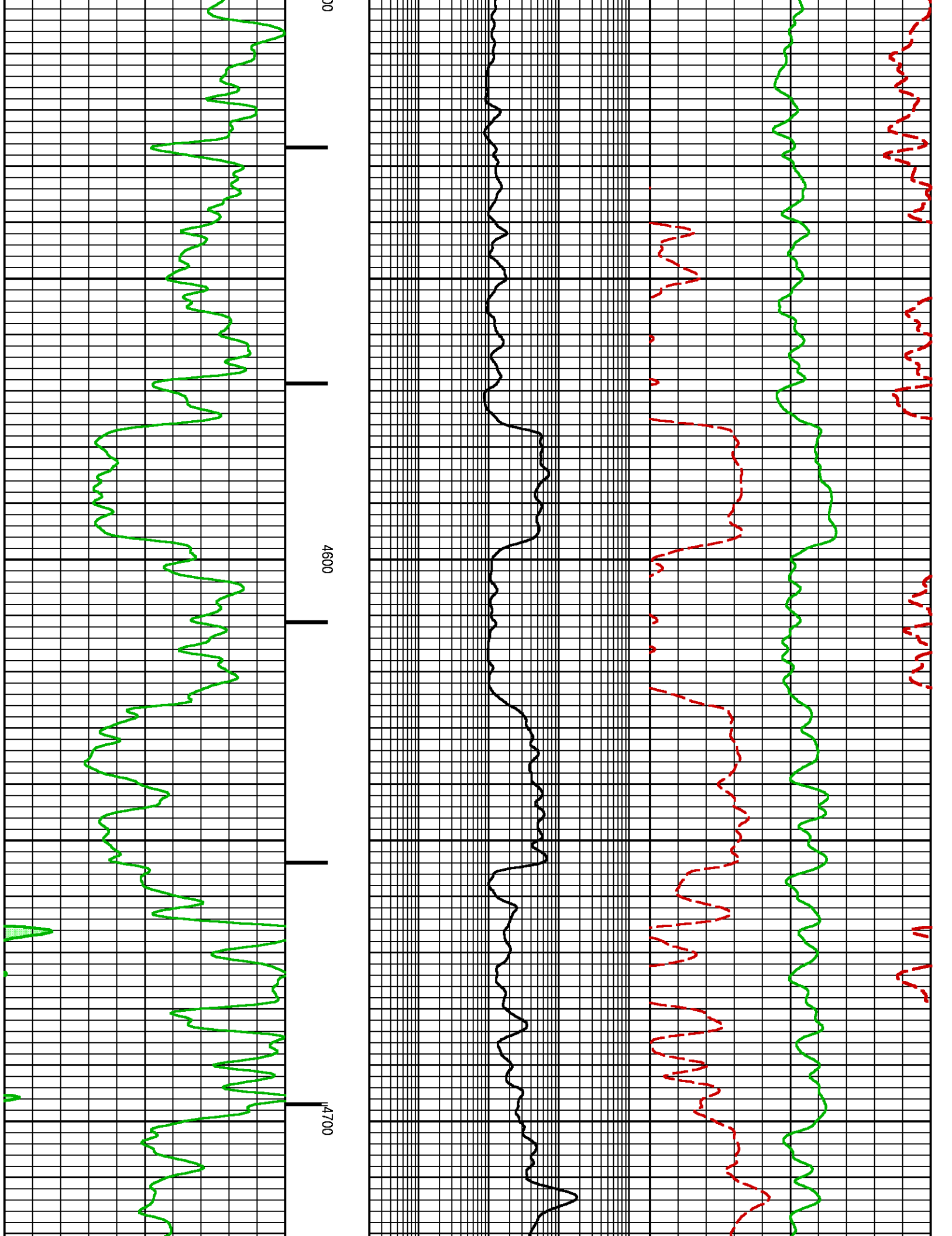


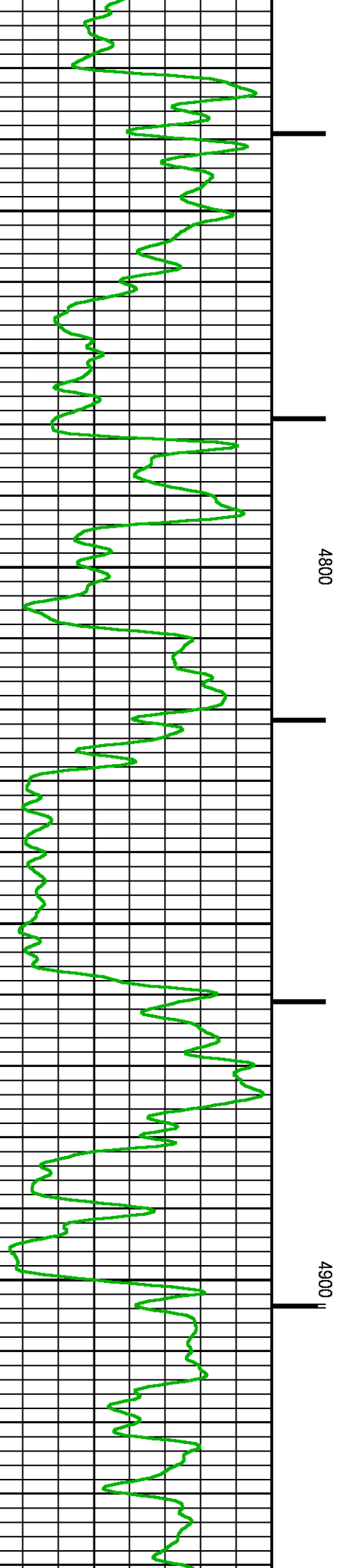
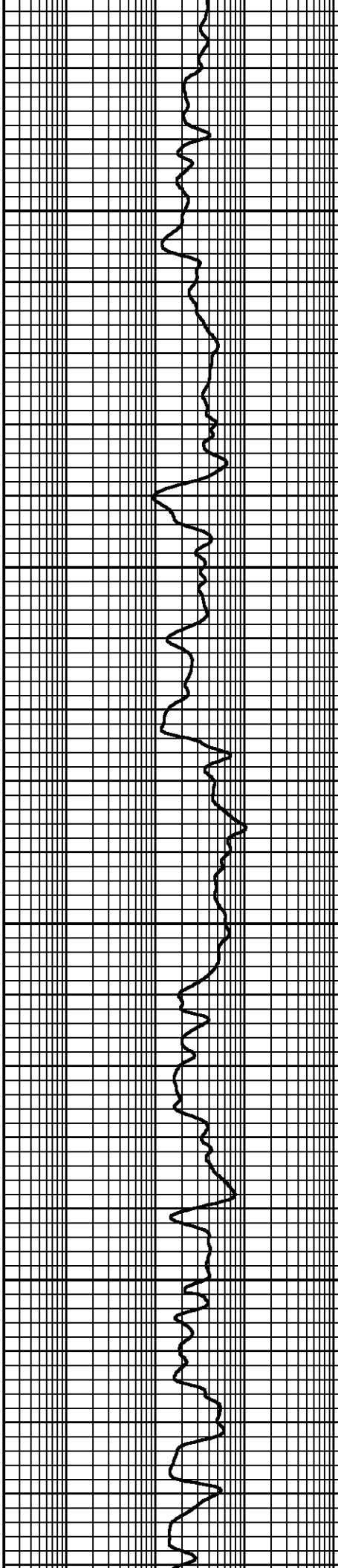
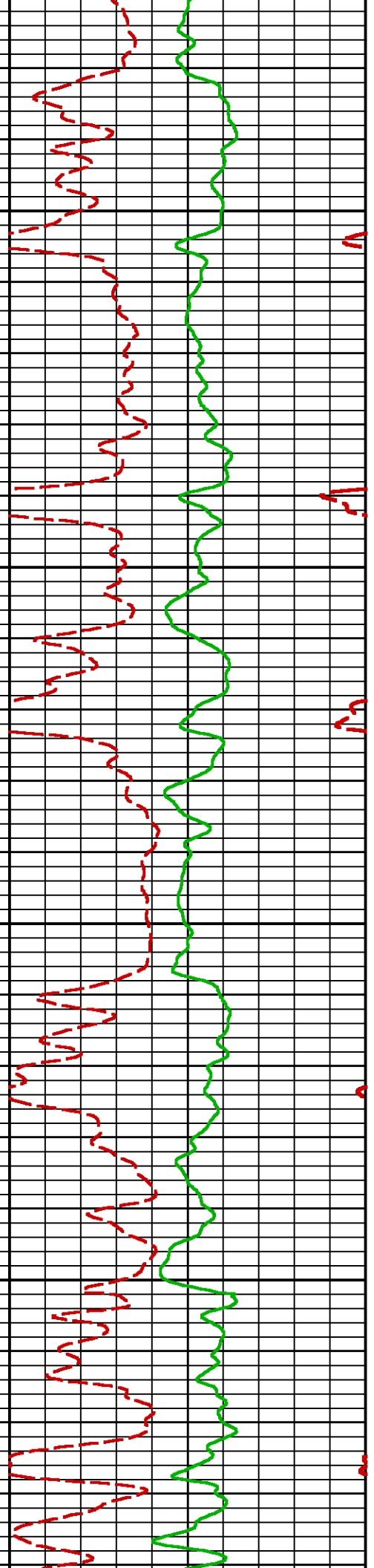


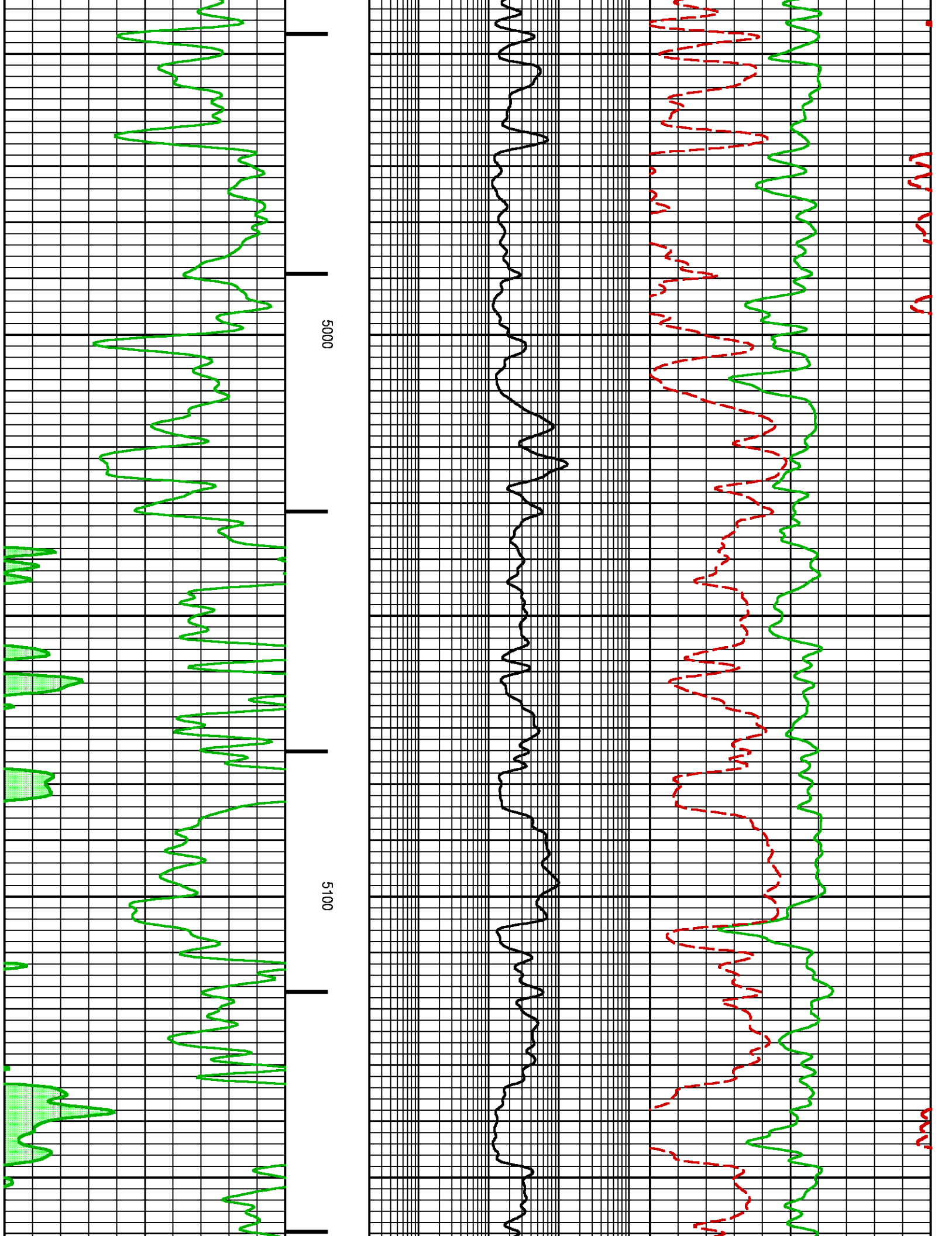
NEO RESULTS FOR NICHOLS 13-21W (MAIN)

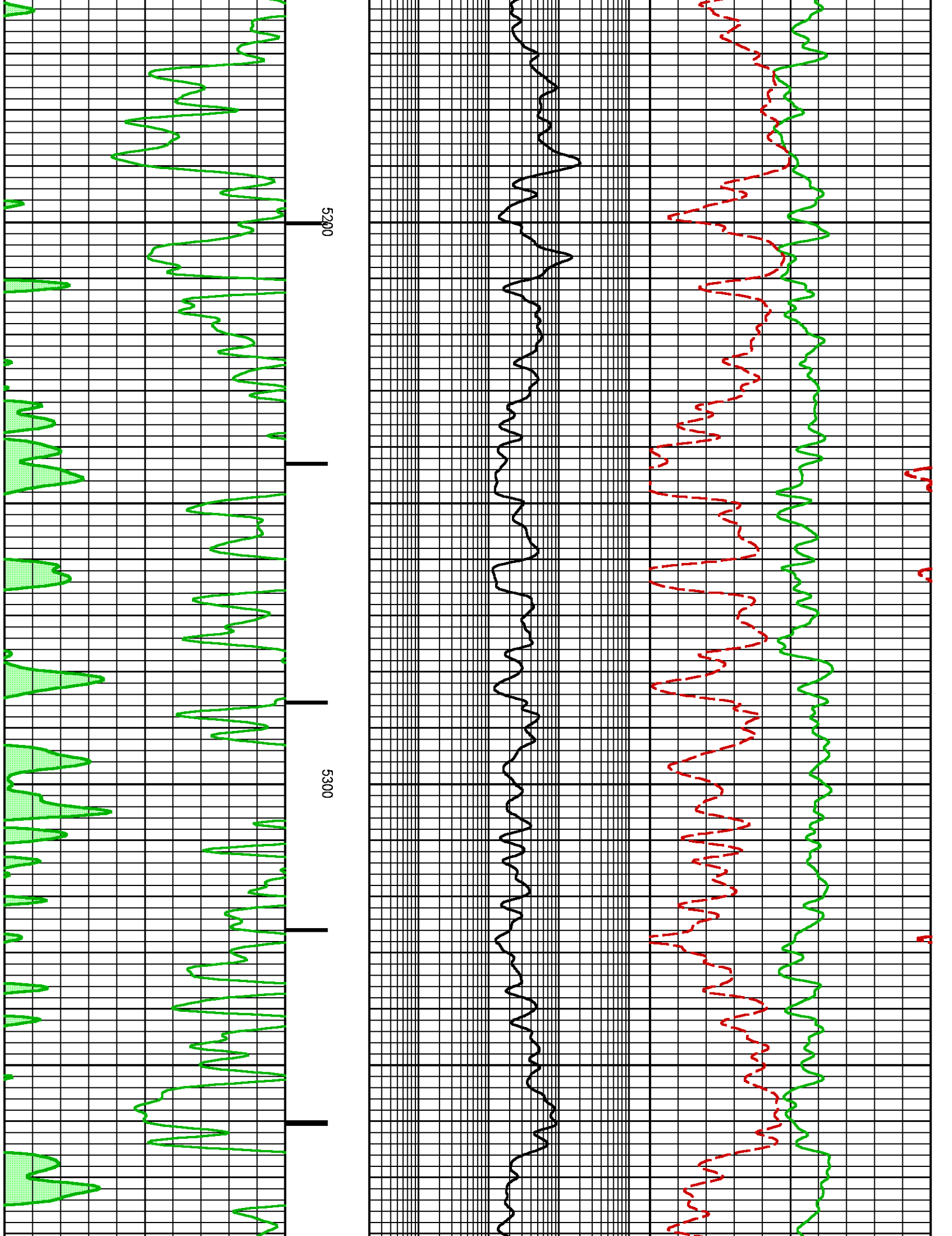
Project : NA
User : ellskima
Presentation : BHI3BKZH12:C:\Ape_Projects\laramie_nichols_13_21w\ NEO PRESENTATION_LARAMIE_MAIN.pdf [5"/100' Scale]
Plot Interval : 4485 - 7781.75 Feet
Data File 1 : F1 : BHI3BKZH12:C:\Ape_Projects\laramie_nichols_13_21w\Merged_Set_Final.xtf
Created On : N/A
Company : LARAMIE ENERGY
Well : NICHOLS 0994-13-21W
Field : VEGA
File Interval : 2409.75 - 7781.75 Feet
OCT : NA

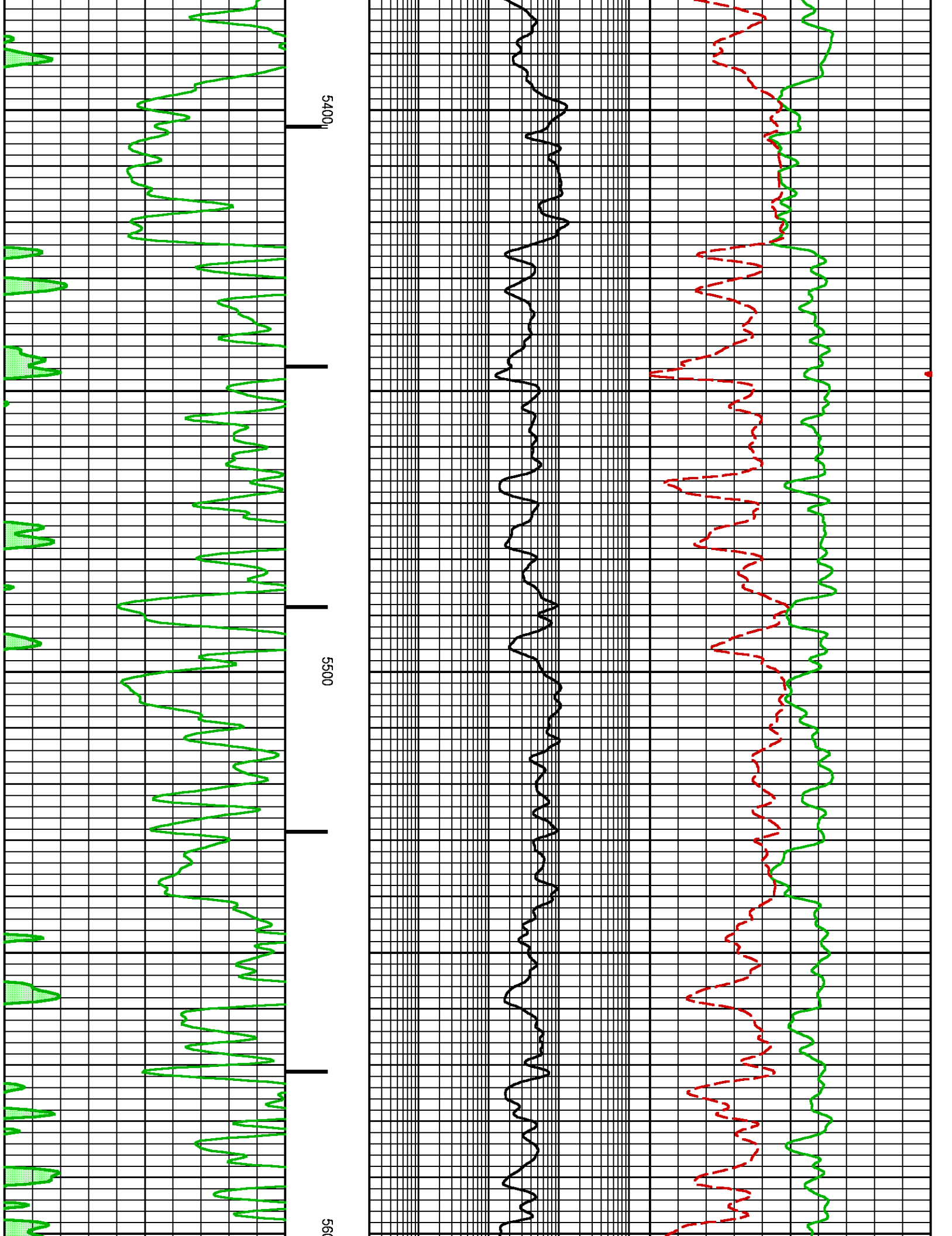


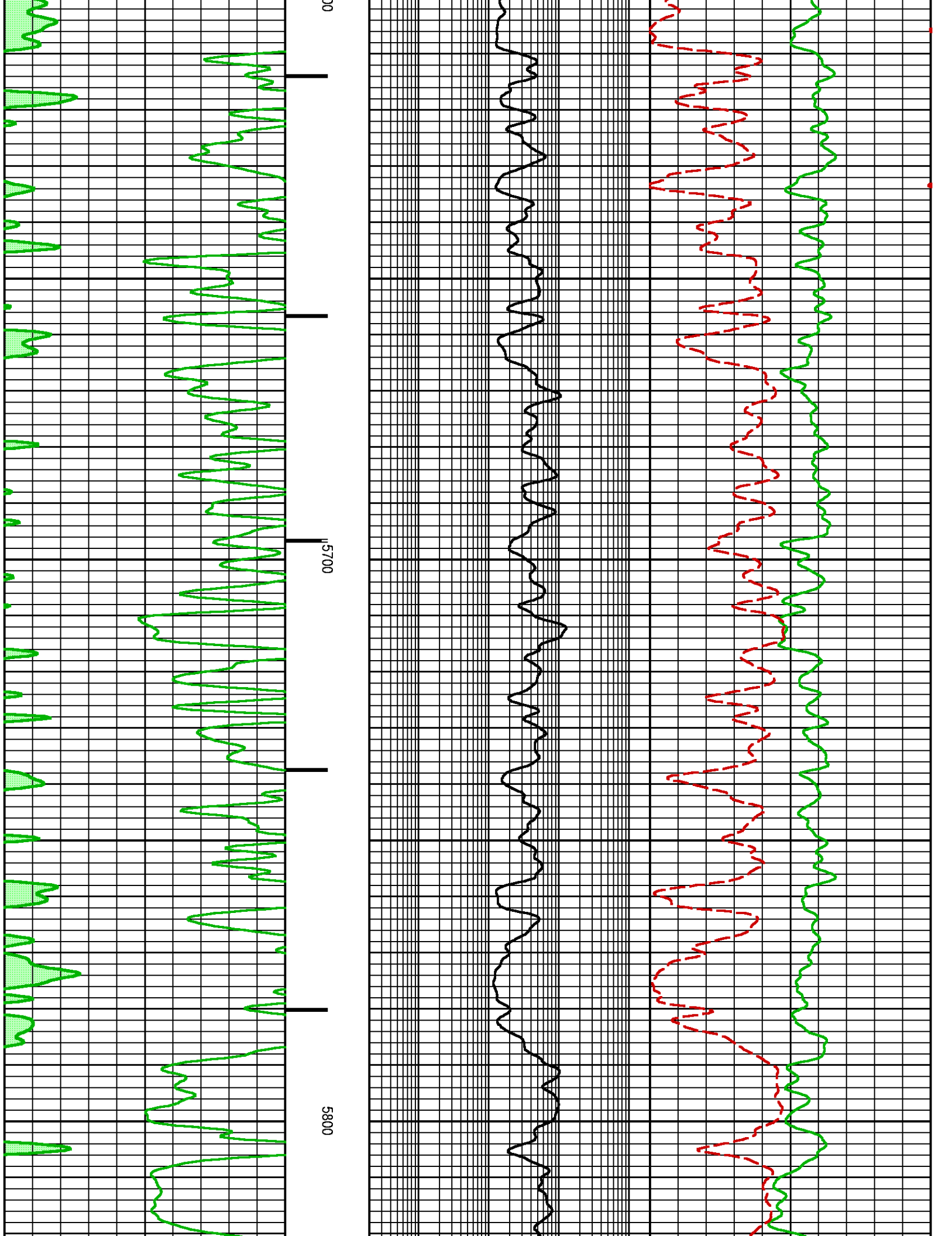


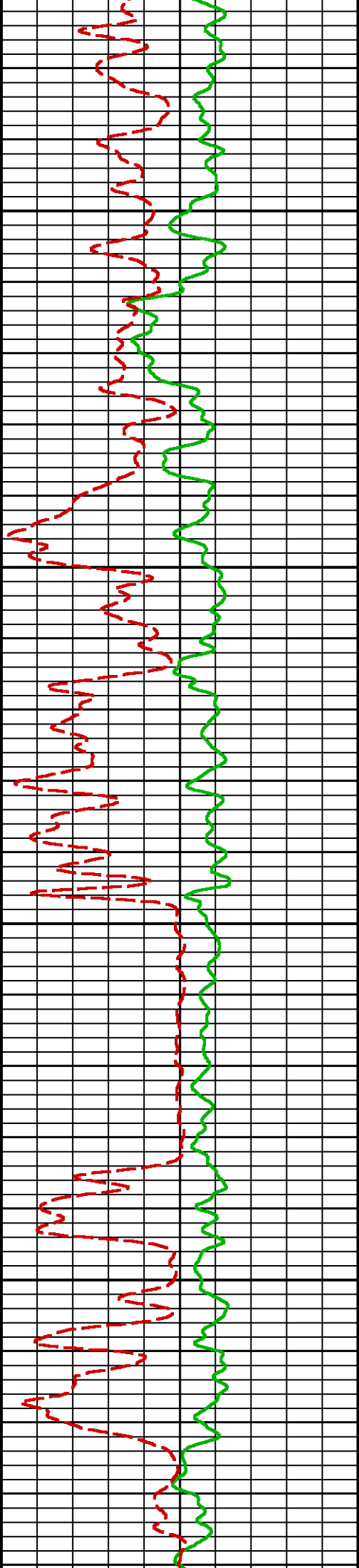
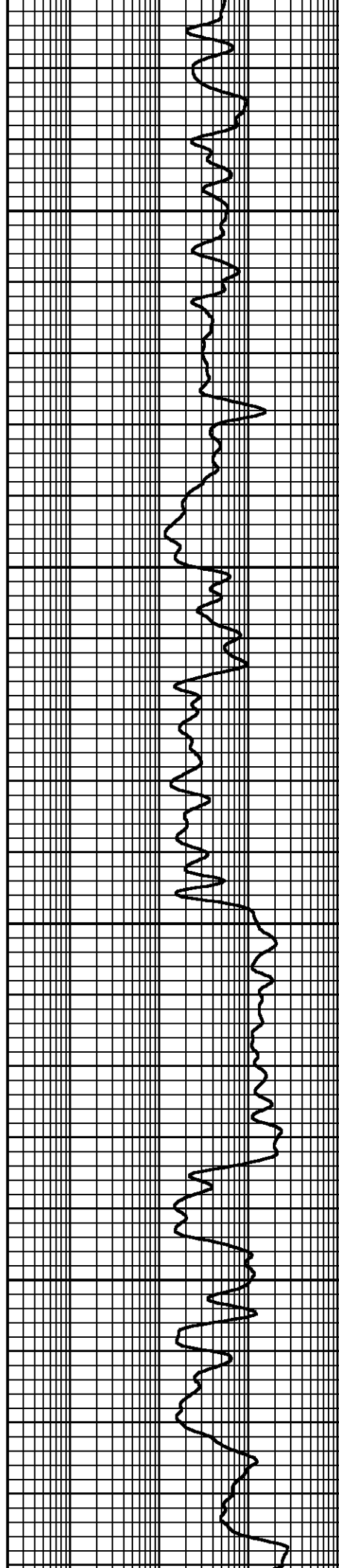
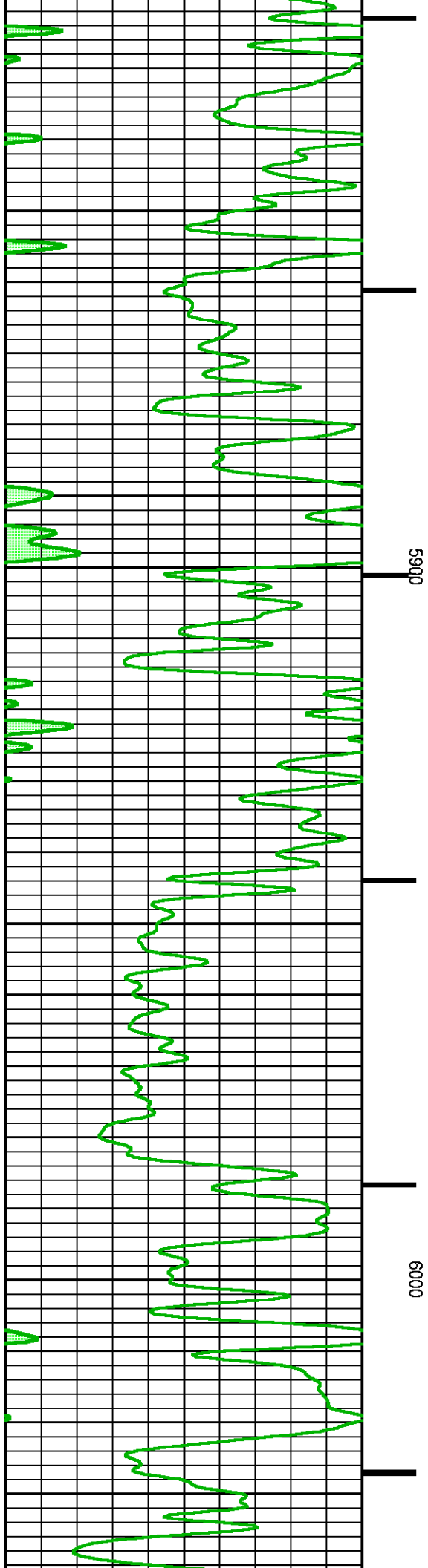


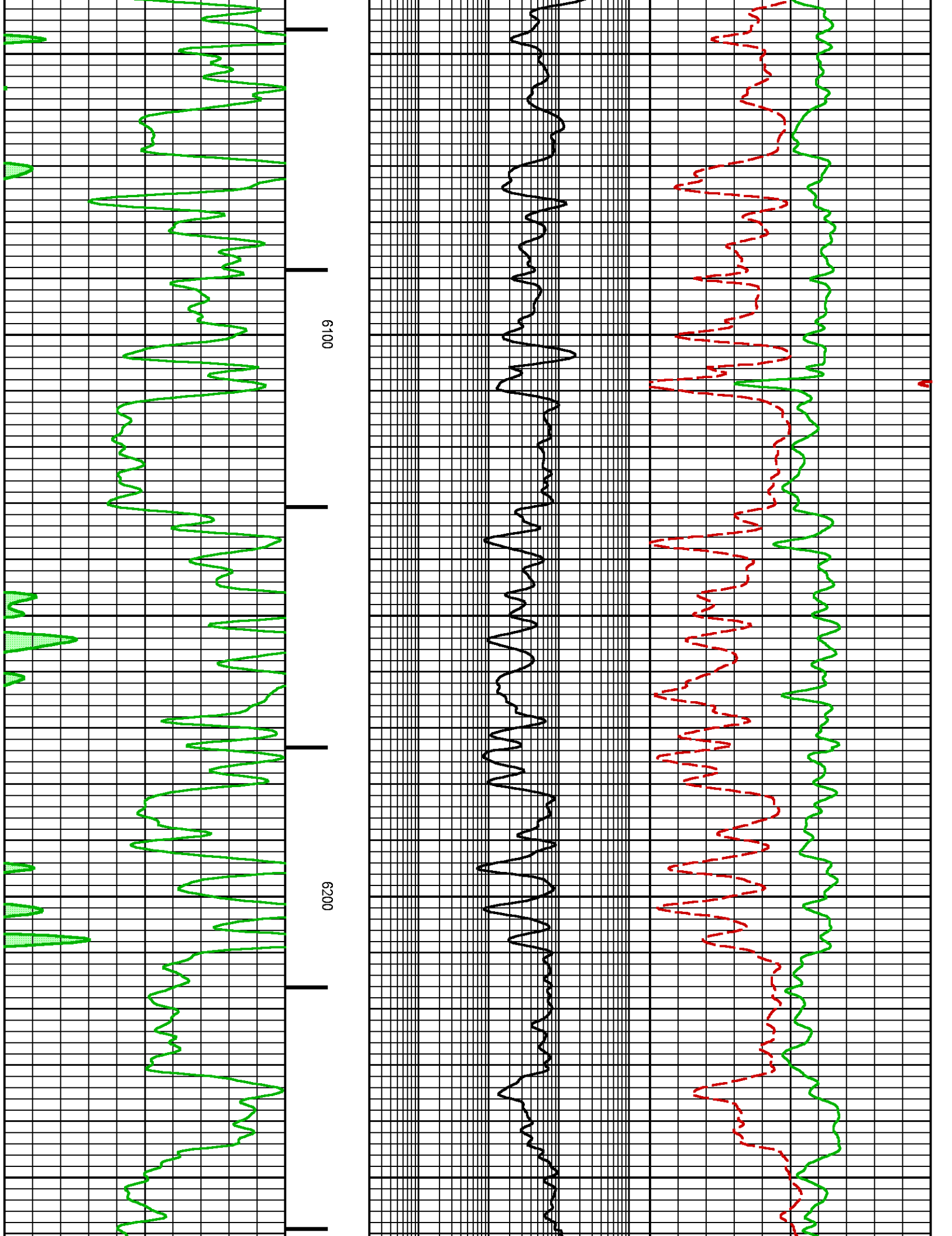


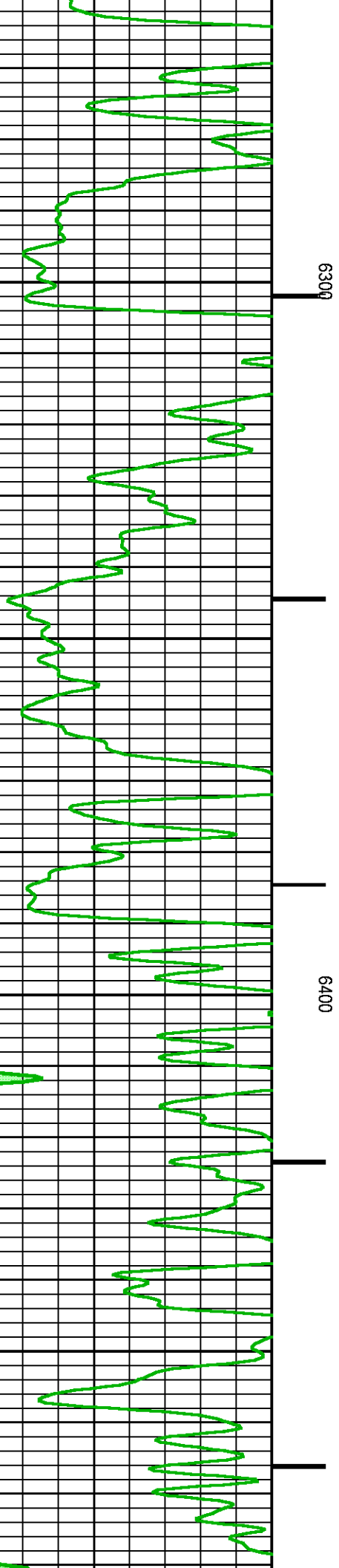
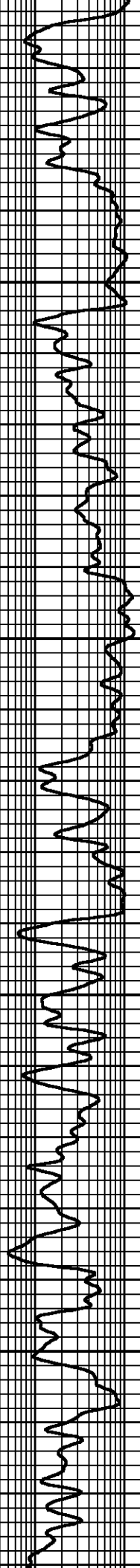
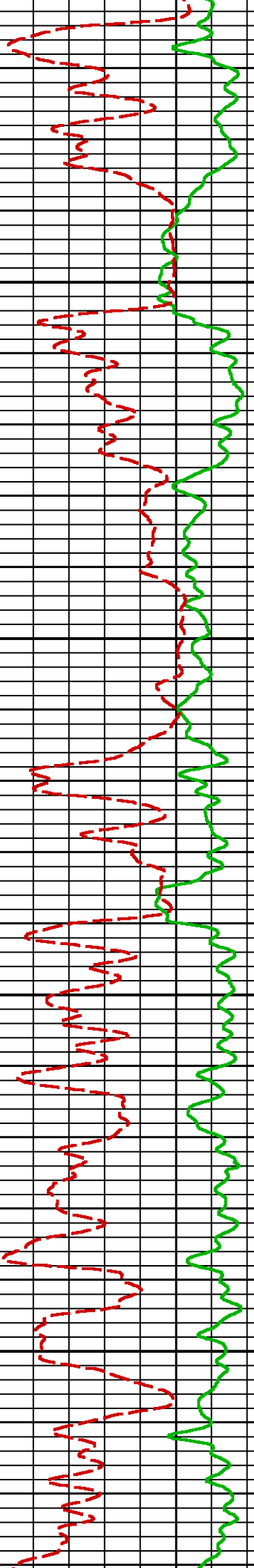


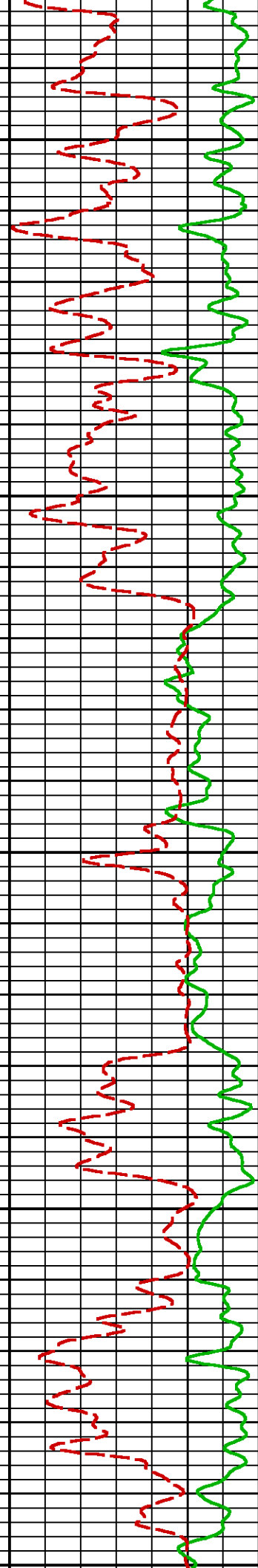
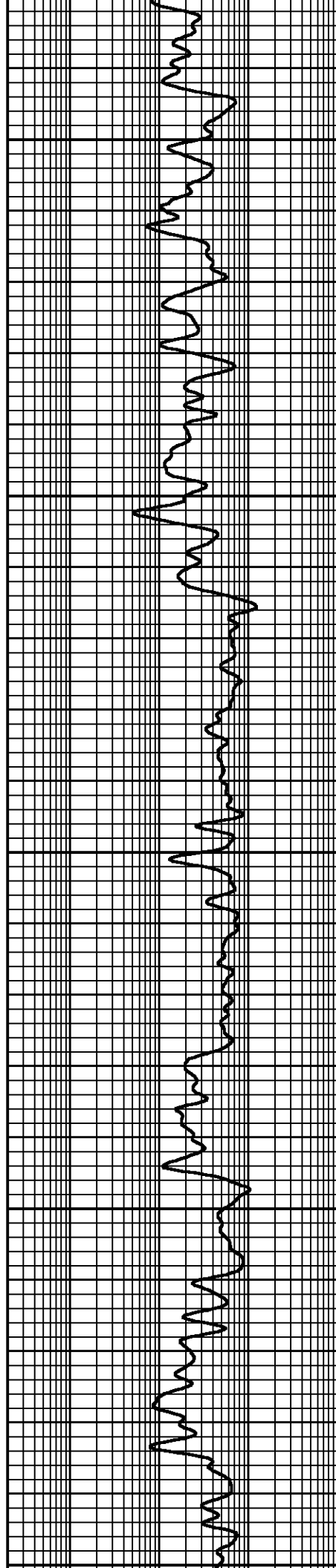
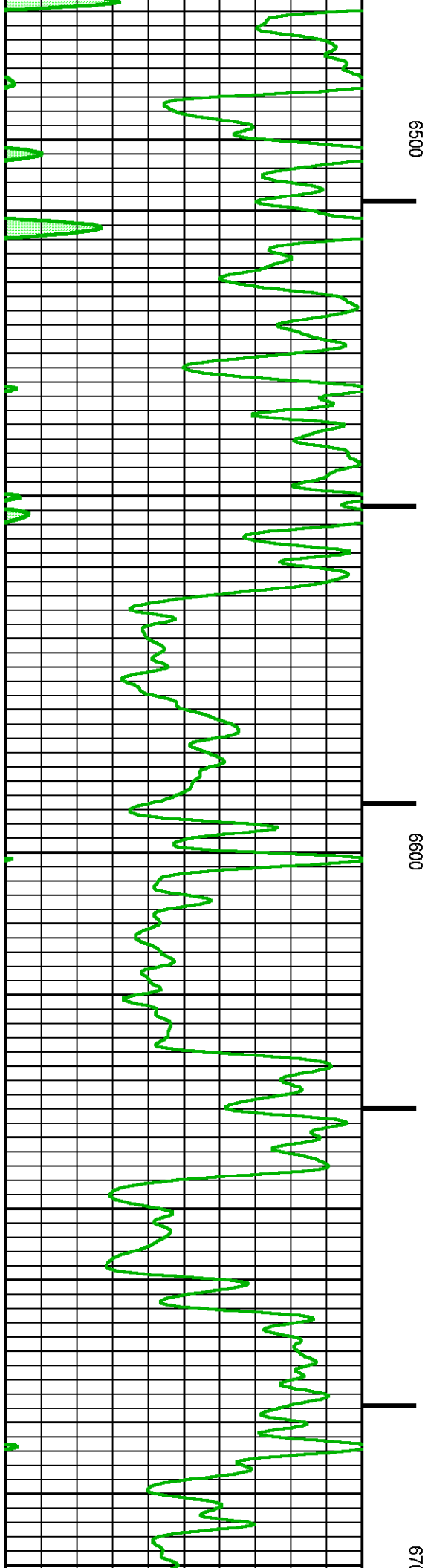


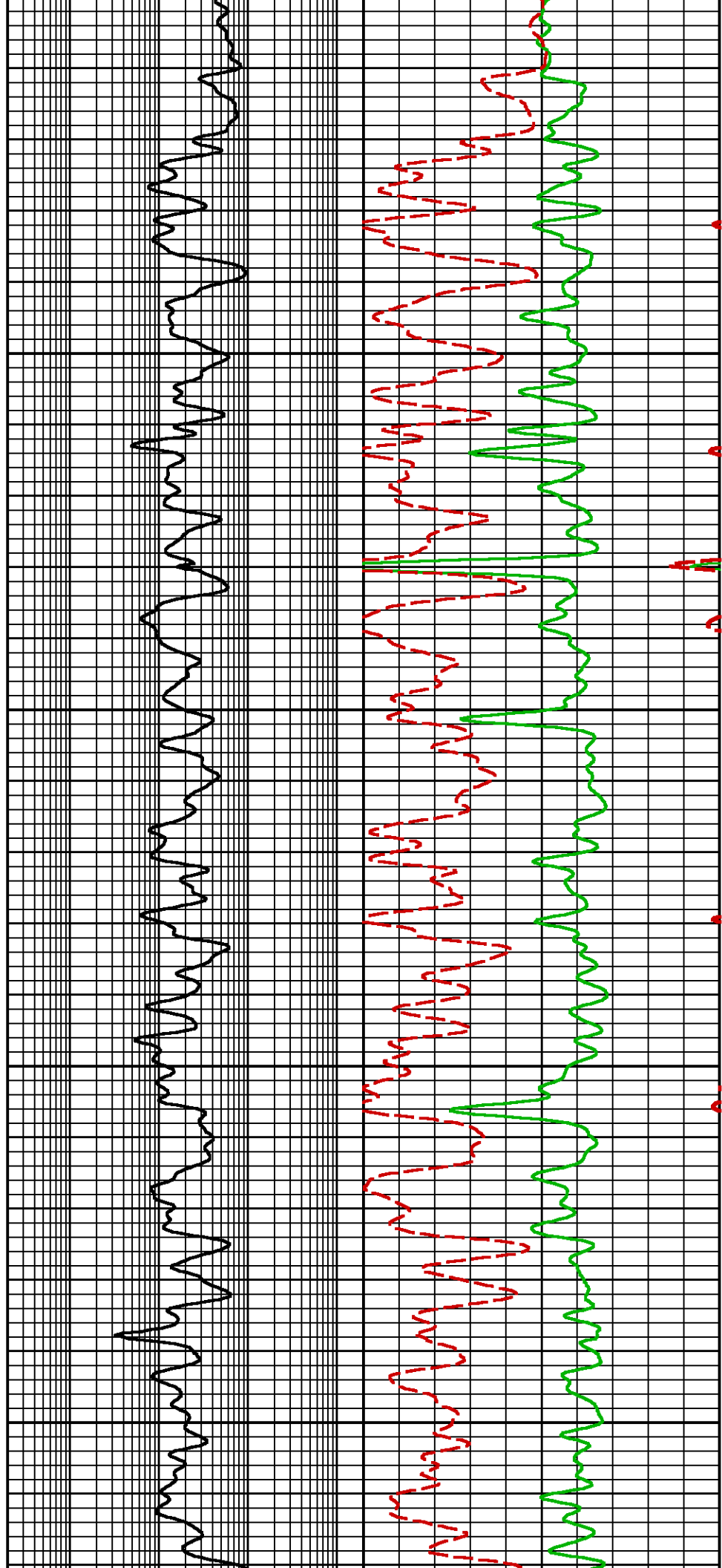
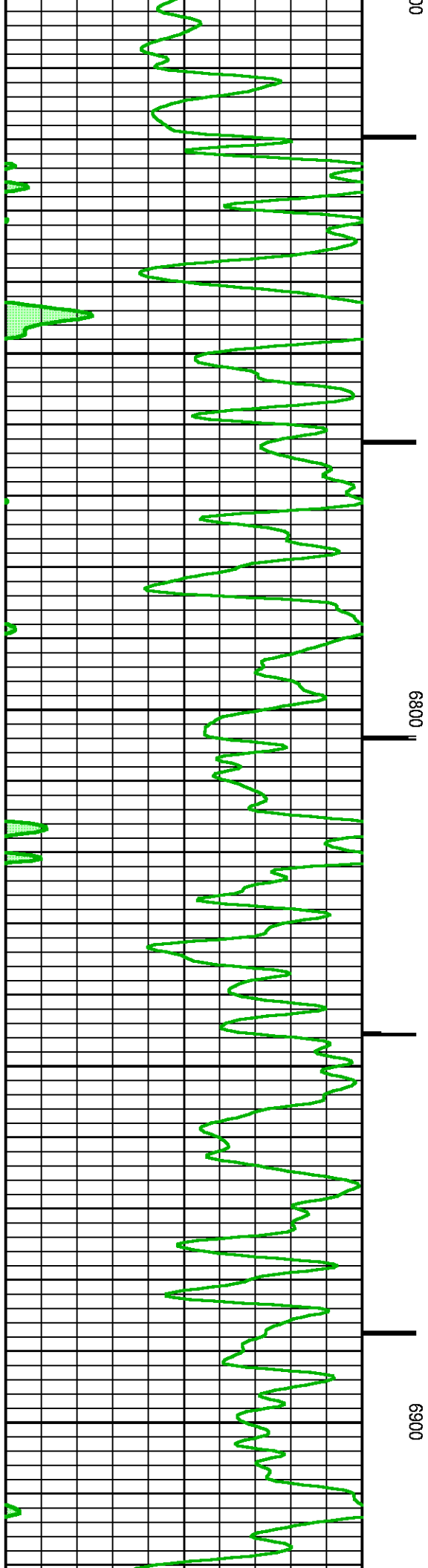


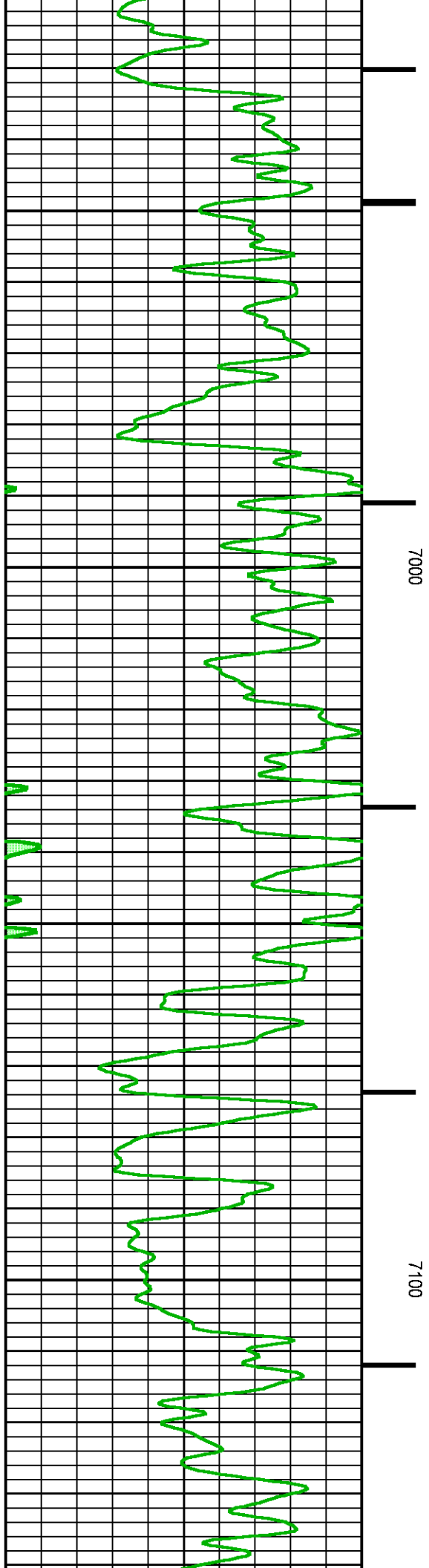
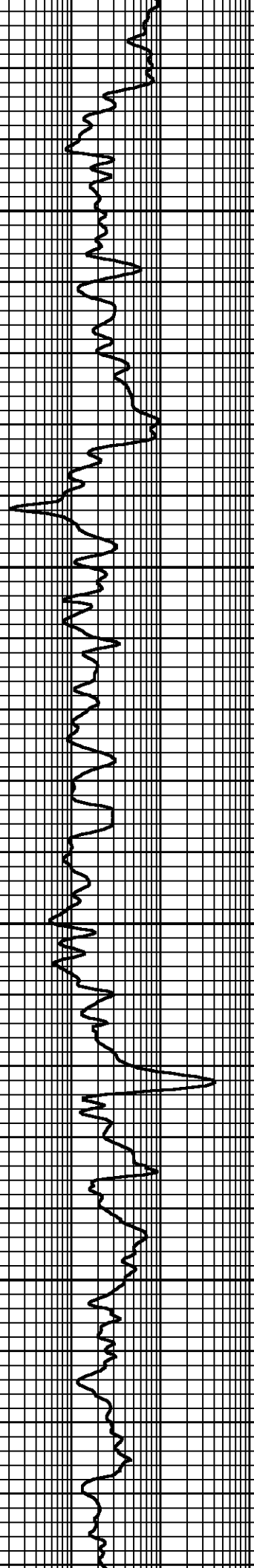
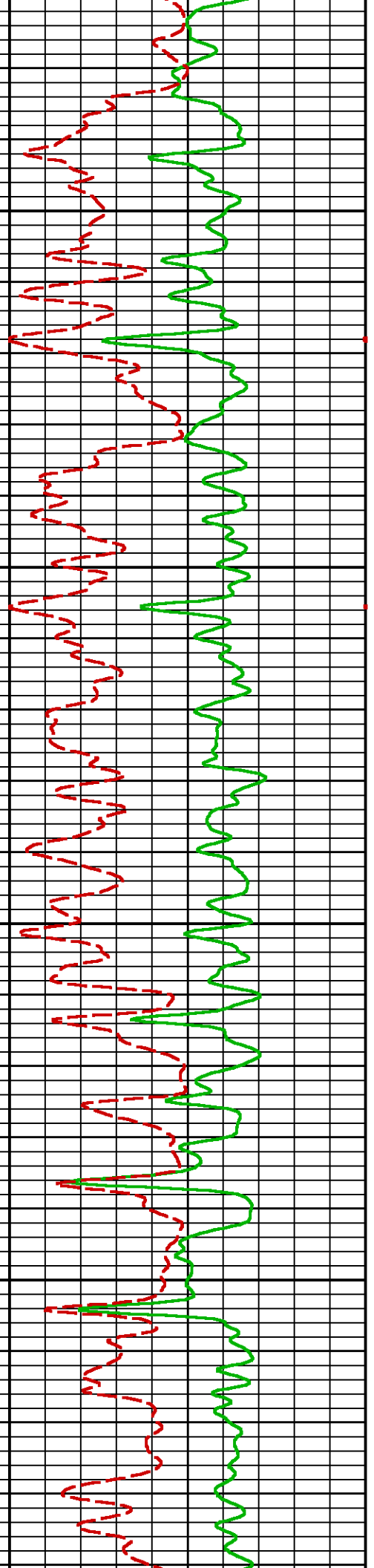


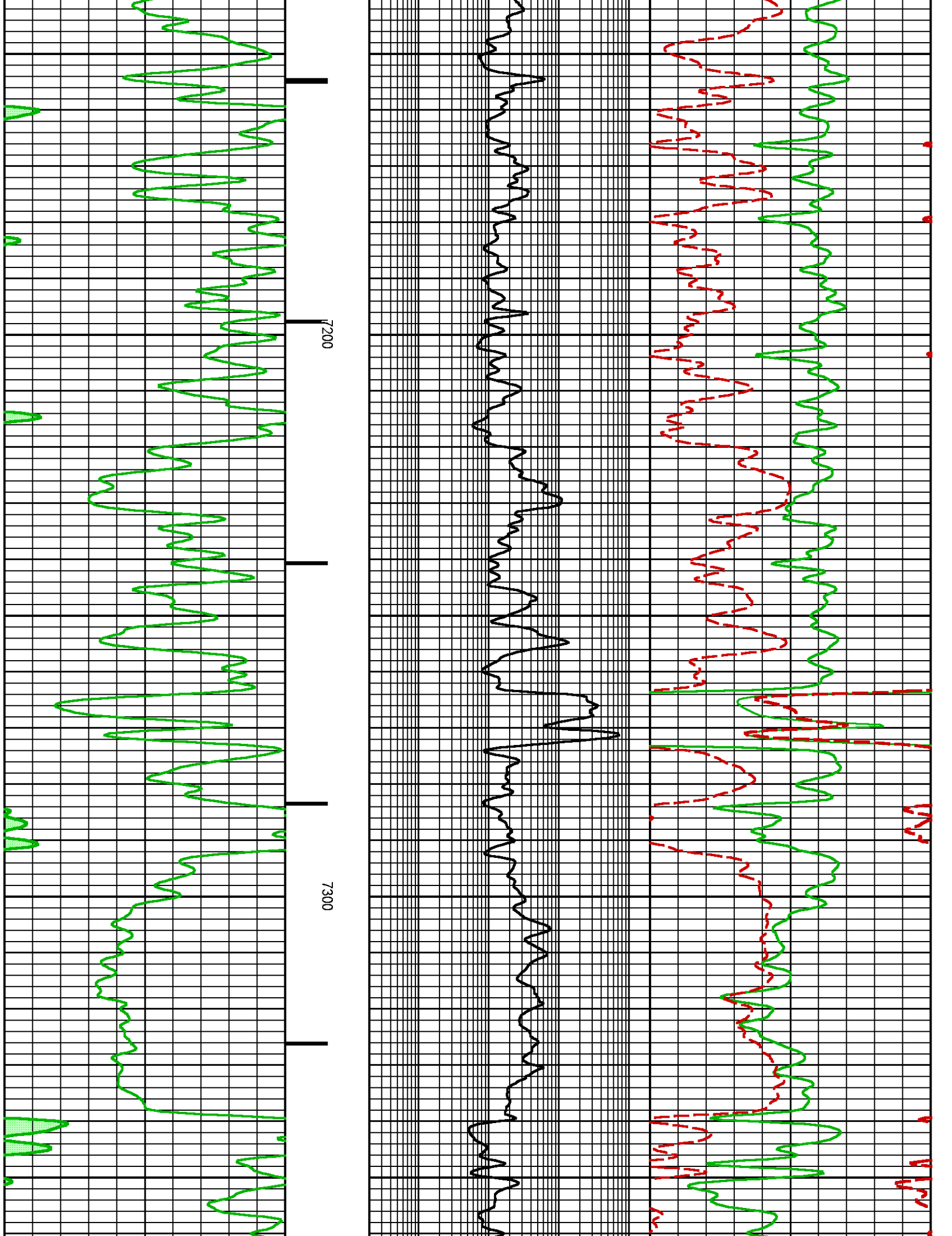


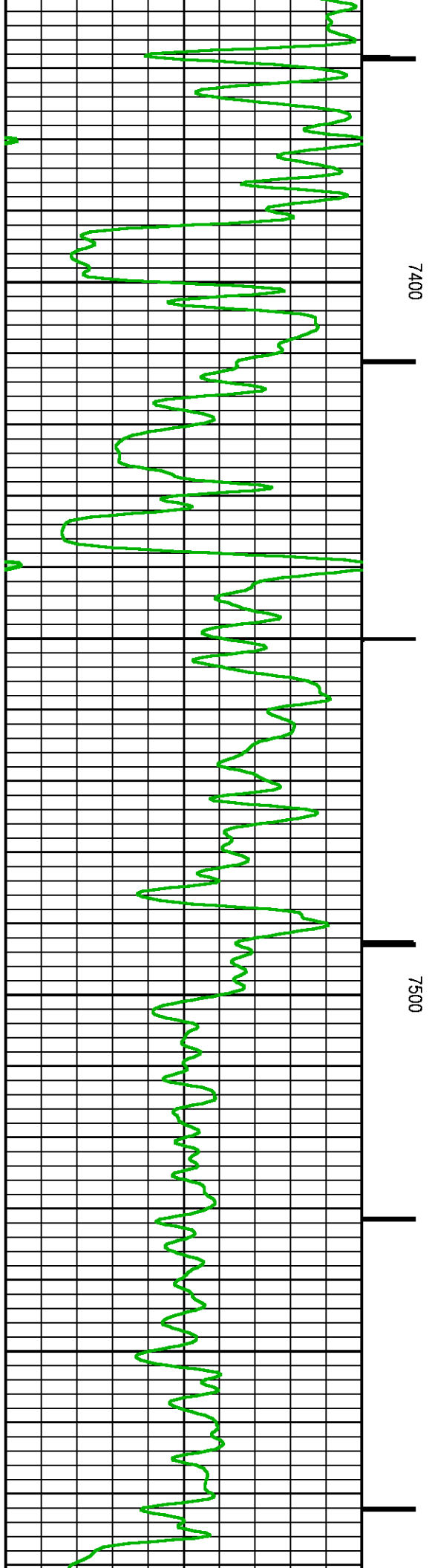
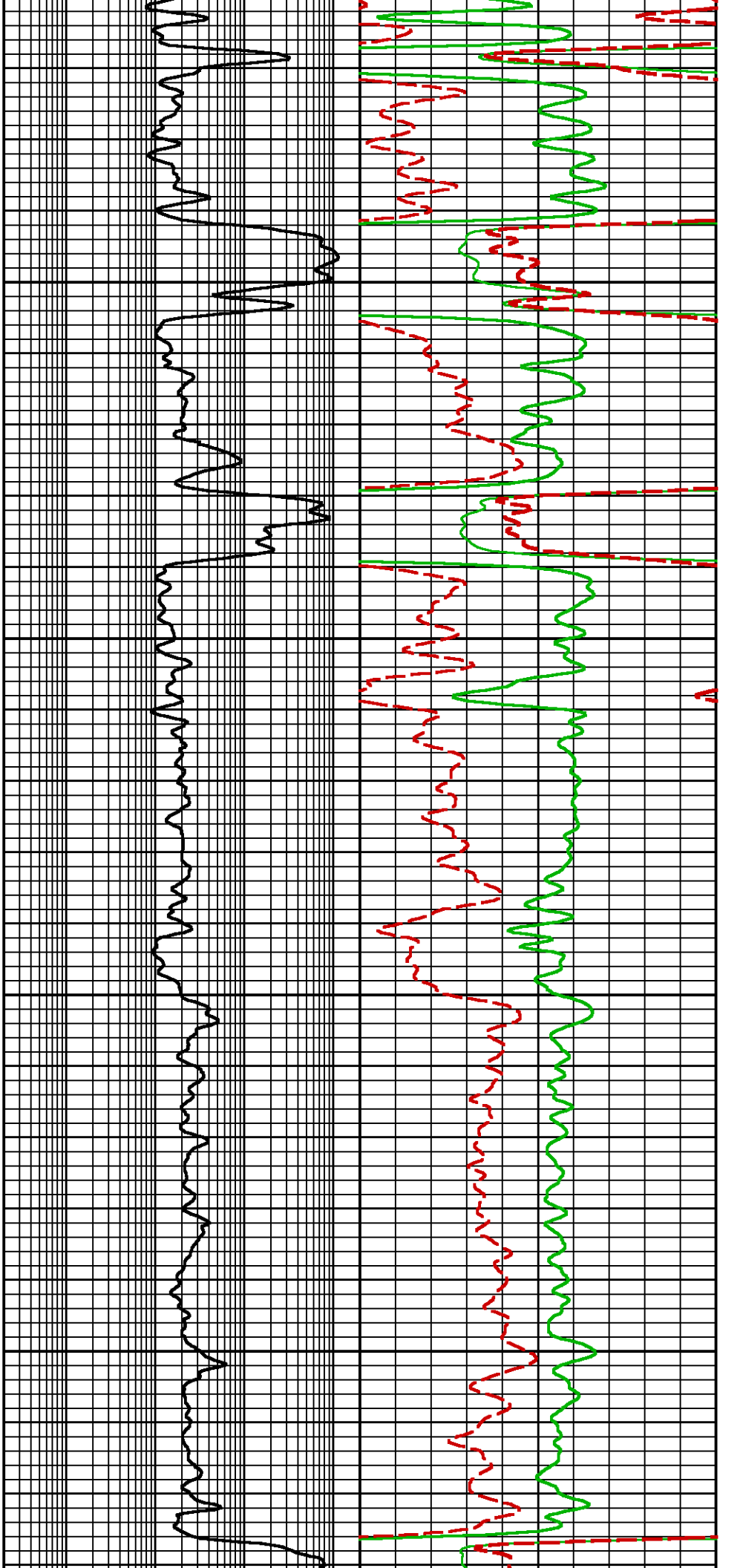


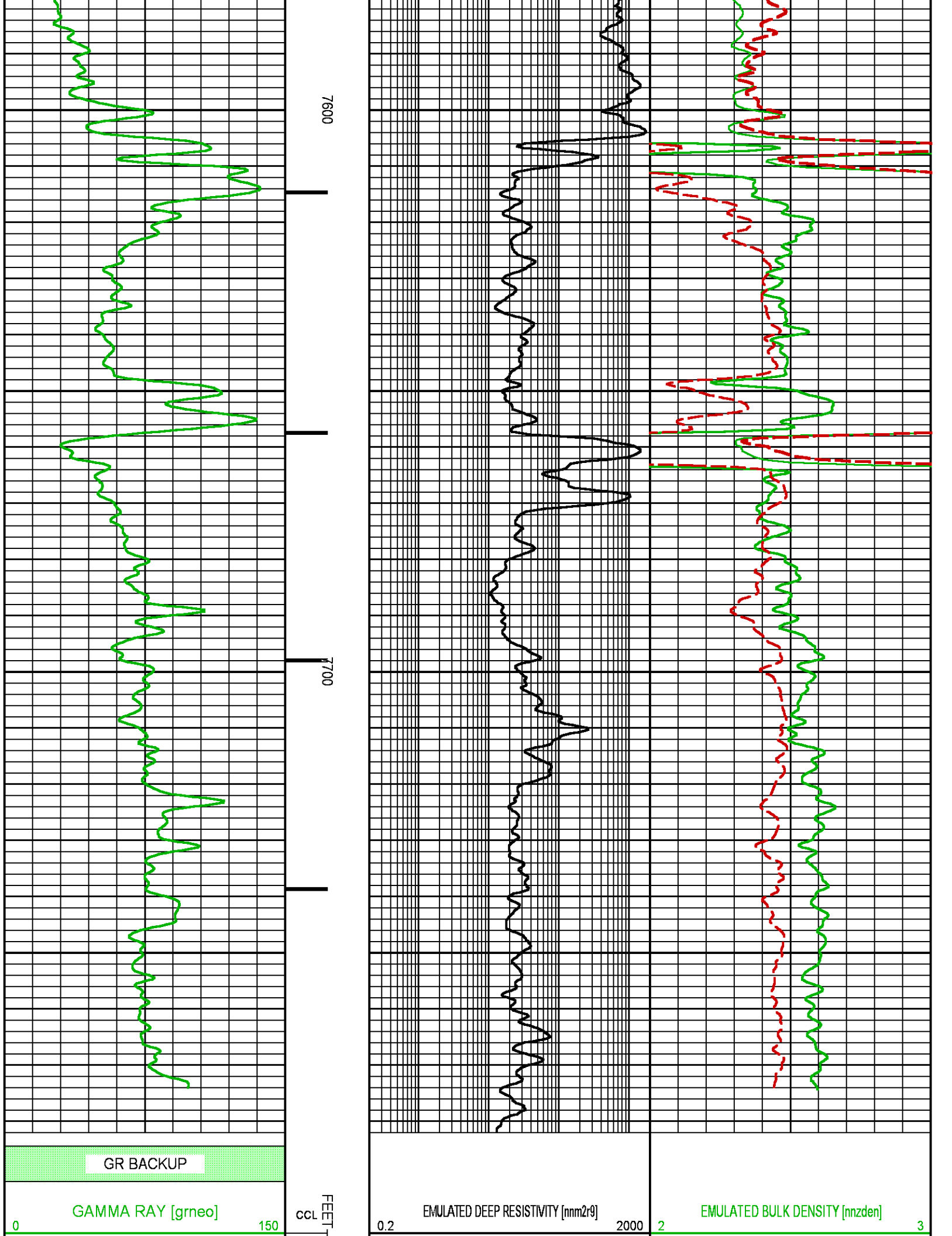












(GAPI)

(OHMM)

(G/C3)

EMULATED NEUTRON POROSITY [nnencf]

0.3

-0.1

(FRAC)

**BAKER
HUGHES**
a GE company



COMPANY

LARAMIE ENERGY II, LLC

WELL

NICHOLS 0994-13-21W

FIELD

VEGA

COUNTY

MESA

STATE

COLORADO

FILE NO:

API NO:

05-077-10413-0000

LOCATION:

SEE REMARKS

ELEVATIONS:

KB 7161 FT

DF

GL 7137 FT

SEC

24

TWP

9S

RGE

94W

DATE

22-MAR-2018

Pulsed Neutron
Formation Evaluation

