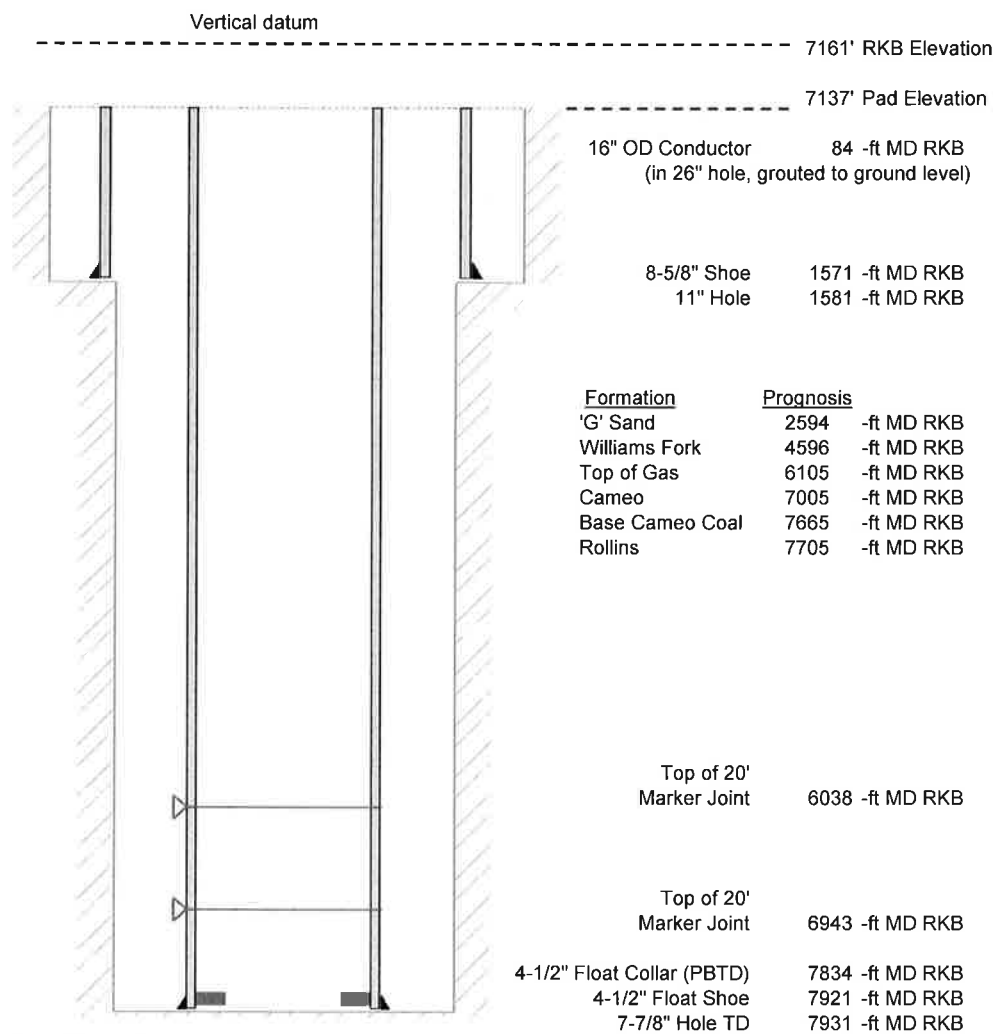


Laramie Energy, LLC
Nichols 0994-13-21W
Slot B-3
H&P 290 (24-ft KB)

API # : 077-10413-00
SW/4 NE/4 S24/T9S/R94W/6th PM
Mesa County, CO
Date of diagram : 1/29/2018



Cementing details

8-5/8" 24# J55 STC Surface Csg	Lead	Tail
Density (ppg)	12.0	12.5
Volume (sx)	190	107
Yield (cf/sx)	2.52	2.22
Top (ft RKB)	24	1024
Bottom (ft RKB)	1024	1571
Returns (full or partial)	Full	Full

4-1/2" 11.6# L-80 LTC Prod Csg	Lead	Tail
Density (ppg)	12.7	13.5
Volume (sx)	844	393
Yield (cf/sx)	1.97	1.90
Est Top (ft RKB)	1026	5905
Est Bottom (ft RKB)	5905	7921
Returns (full or partial)	full	full

Displacement
8.3 ppg
121 bbls

Other Remarks : Surface-26 bbls cement to surface Production- 15
bbls spacer to surface