

Nichols 0994-13-21W  
Mesa County, CO  
Q180075 & RM-180067  
Design #2

Company Name: Laramie Energy, LLC  
Nichols 0994-13-21W  
Mesa County, CO  
Rig: H&P #290  
Created By: Will Jircik  
Date: 1/29/2018

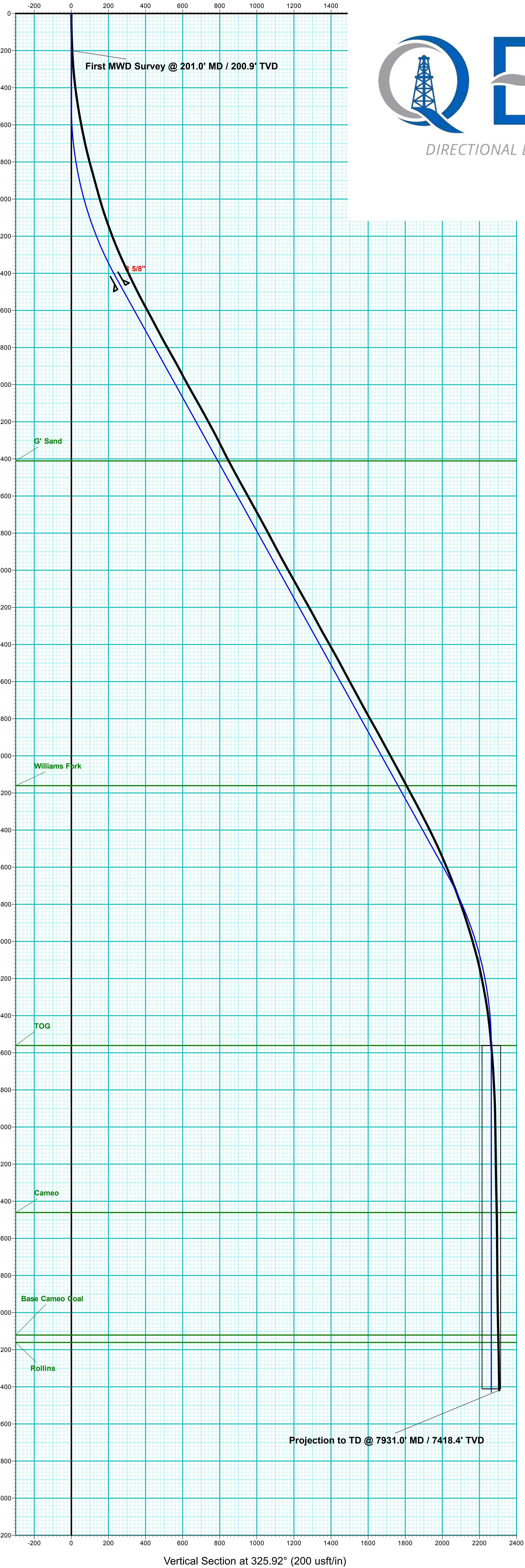
PROJECT DETAILS: Mesa County, CO  
Geodetic System: US State Plane 1983  
Datum: North American Datum 1983  
Ellipsoid: GRS 1980  
Zone: Colorado Central Zone  
System Datum: Mean Sea Level

T

M

Azimuths to True North  
Magnetic North: 9.54°

Strength: 51352.7snT  
Dip Angle: 65.42°  
Date: 1/11/2018  
Model: IGRF2015



FORMATION TOP DETAILS		
TVDPath	MDPath	Formation
2411.0	2594.2	G' Sand
4161.0	4595.8	Williams Fork
5561.0	6104.7	TOG
6461.0	7004.7	Cameo
7121.0	7664.7	Base Cameo Coal
7161.0	7704.7	Rollins

WELL DETAILS: Nichols 0994-13-21W					
+N/-S	+E/-W	Northing	Ground Level: Easting	7137.0	Latitude
0.0	0.0	1529767.15	2340222.68		39.264708
					Longitude
					-107.630572

DESIGN ANNOTATIONS									
MD	Inc	Azi	TVD	+N/-S	+E/-W	VSect	Departure	Annotation	
494.0	0.00	0.00	494.0	0.0	0.0	0.0	0.0	KOP (Build 3° / 100')	
1461.9	29.04	325.92	1421.0	198.8	-134.5	240.1	240.1	EOB @ 29.04° Inc. / 325.92° Azm	
5136.8	29.04	325.92	4634.0	1676.2	-1134.1	2023.8	2023.8	Drop 3° / 100'	
6104.7	0.00	0.00	5561.0	1875.0	-1268.6	2263.9	2263.9	EOB @ Vertical	
7954.7	0.00	0.00	7411.0	1875.0	-1268.6	2263.9	2263.9	TD @ 7954.7' MD / 7411.0' TVD	

ANNOTATIONS									
MD	Inc	Azi	TVD	+N/-S	+E/-W	VSect	Departure	Annotation	
201.0	3.20	300.30	200.9	2.8	-4.8	5.1	5.6	First MWD Survey @ 201.0' MD / 200.9' TVD	
7931.0	2.07	263.67	7418.4	1909.2	-1294.2	2306.5	2318.8	Projection to TD @ 7931.0' MD / 7418.4' TVD	

DESIGN TARGET DETAILS								
Name	TVD	+N/-S	+E/-W	Northing	Easting	Latitude	Longitude	Shape
PBHL - Nichols 0994-13-21W	7411.0	1875.0	-1268.6	1531674.12	2339002.60	39.269856	-107.83053	Circle (Radius: 50.0)

