

Nichols 0994-24-01E
Mesa County, CO
Q180073 & RM-180065
Design #2

Company Name: Laramie Energy, LLC
Nichols 0994-24-01E
Mesa County, CO
Rig: H&P #290
Created By: Will Jircik
Date: 1/19/2018

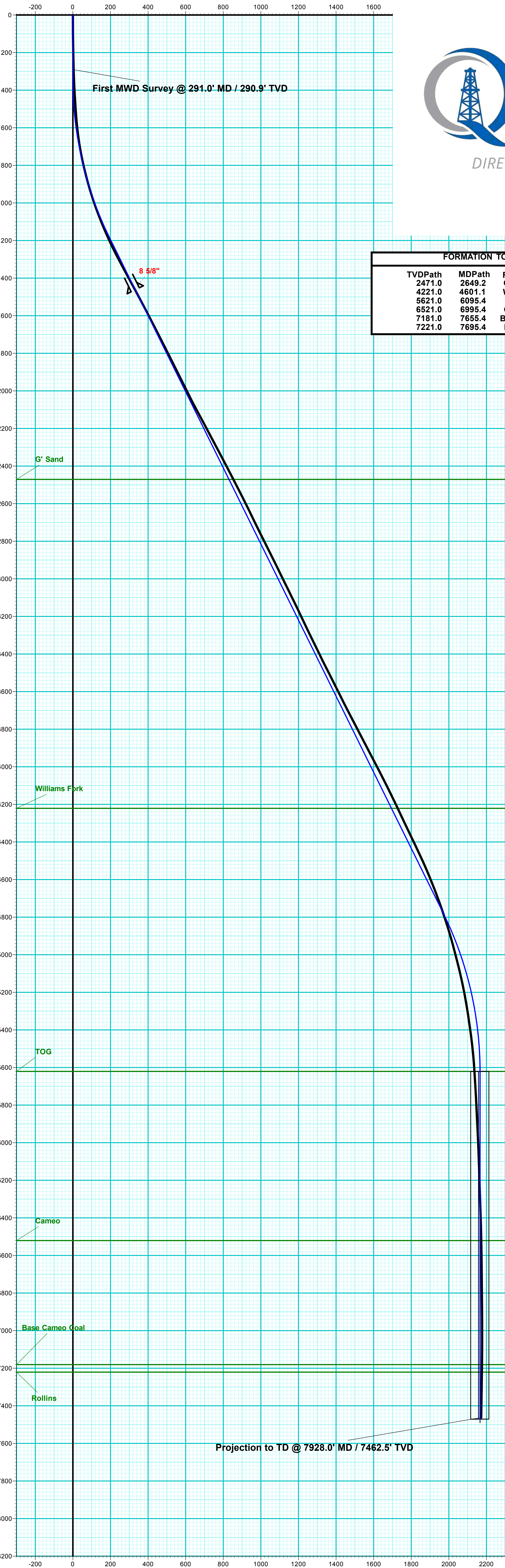
PROJECT DETAILS: Mesa County, CO
Geodetic System: US State Plane 1983
Datum: North American Datum 1983
Ellipsoid: GRS 1980
Zone: Colorado Central Zone
System Datum: Mean Sea Level

T

M

Azimuths to True North
Magnetic North: 9.54°

Strength: 51352.7snT
Dip Angle: 65.42°
Date: 1/11/2018
Model: IGRF2015



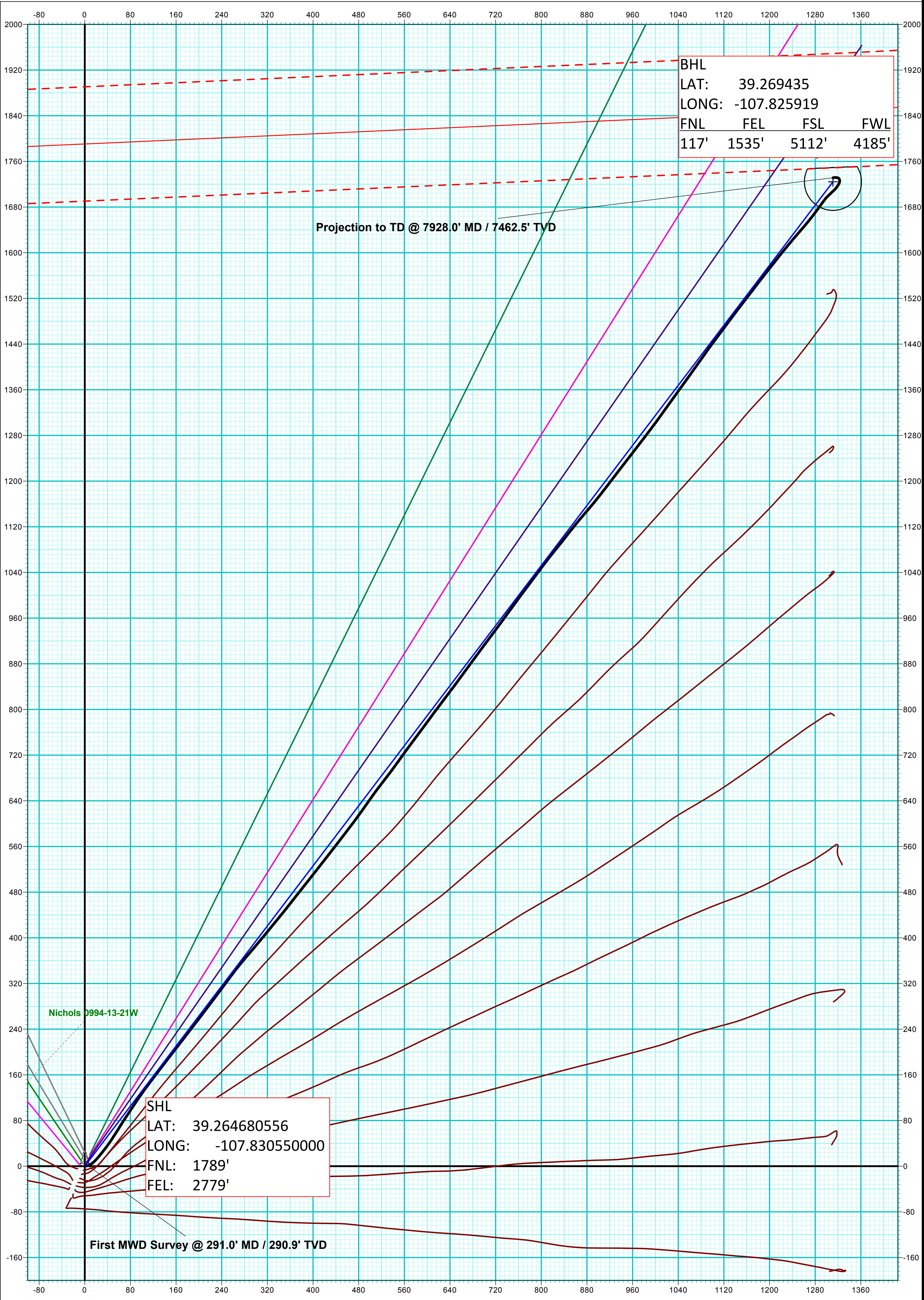
FORMATION TOP DETAILS		
TVDPATH	MDPATH	FORMATION
2471.0	2649.2	G' Sand
4221.0	4601.1	Williams Fork
5621.0	6095.4	TOG
6521.0	6995.4	Cameo
7181.0	7655.4	Base Cameo Coal
7221.0	7695.4	Rollins

DESIGN #2 ANNOTATIONS							
MD	Inc	Azi	TVD	+N/-S	+E/-W	VSec	Departure
344.0	0.00	0.00	344.0	0.0	0.0	0.0	0.0
1220.3	26.29	37.25	1189.9	157.2	119.6	197.5	197.5
5219.1	26.29	37.25	4775.1	1567.0	1191.5	1968.6	1968.6
6095.4	0.00	0.00	5621.0	1724.3	1311.1	2166.1	2166.1
7945.4	0.00	0.00	7471.0	1724.3	1311.1	2166.1	2166.1

WELL DETAILS: Nichols 0994-24-01E				
+N/-S	+E/-W	Northing	Ground Level: Easting	7137.0 Latitude
0.0	0.0	1529757.16	2340228.66	39.264681
		Longitude -107.830550		

ANNOTATIONS							
MD	Inc	Azi	TVD	+N/-S	+E/-W	VSec	Departure
291.0	2.20	79.60	290.9	1.0	5.5	4.1	5.6
7928.0	1.49	260.12	7462.5	1731.4	1311.2	2171.9	2194.7

DESIGN TARGET DETAILS								
Name	TVD	+N/-S	+E/-W	Northing	Easting	Latitude	Longitude	Shape
PBHL - Nichols 0994-24-01E	7471.0	1724.3	1311.1	1531447.22	2341583.53	39.269415	-107.825919	Circle (Radius: 50.0)



Vertical Section at 37.25° (200 usft/in)