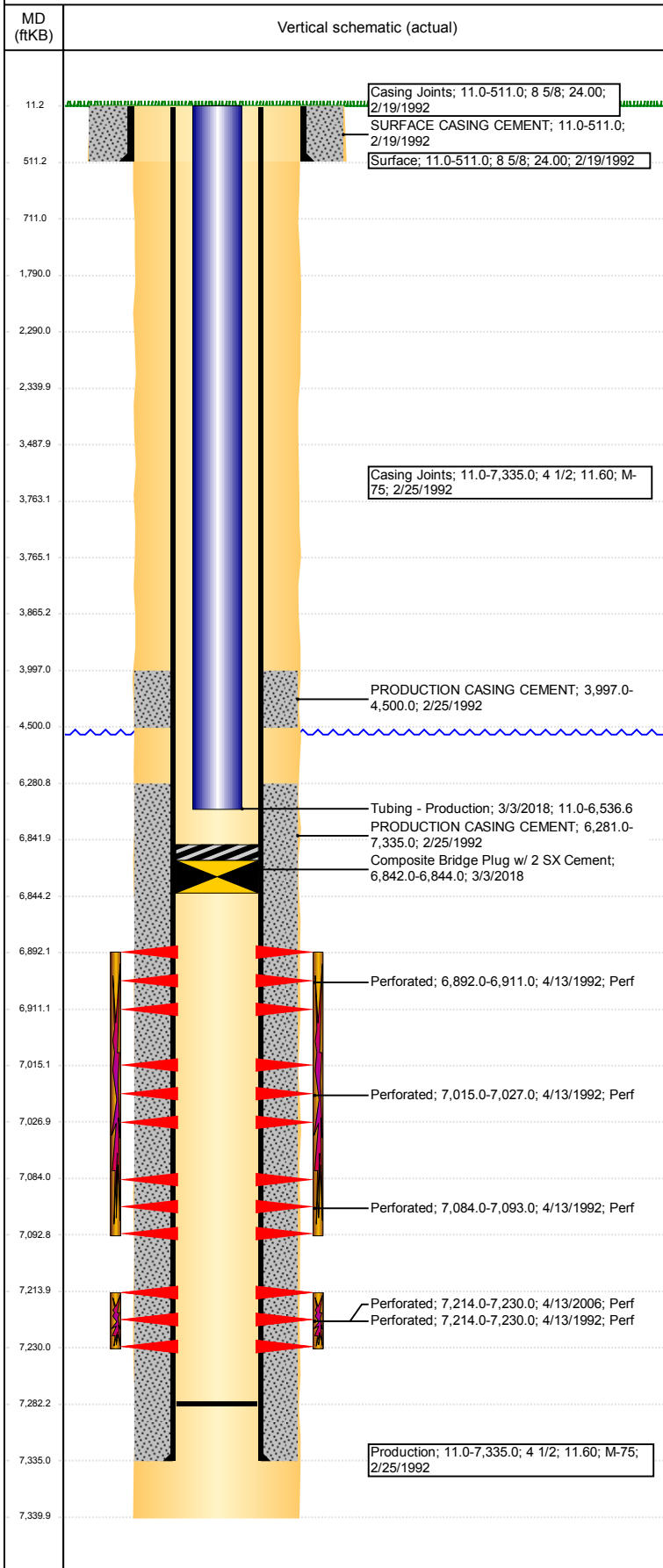


Well Name: UPRC 11-06F

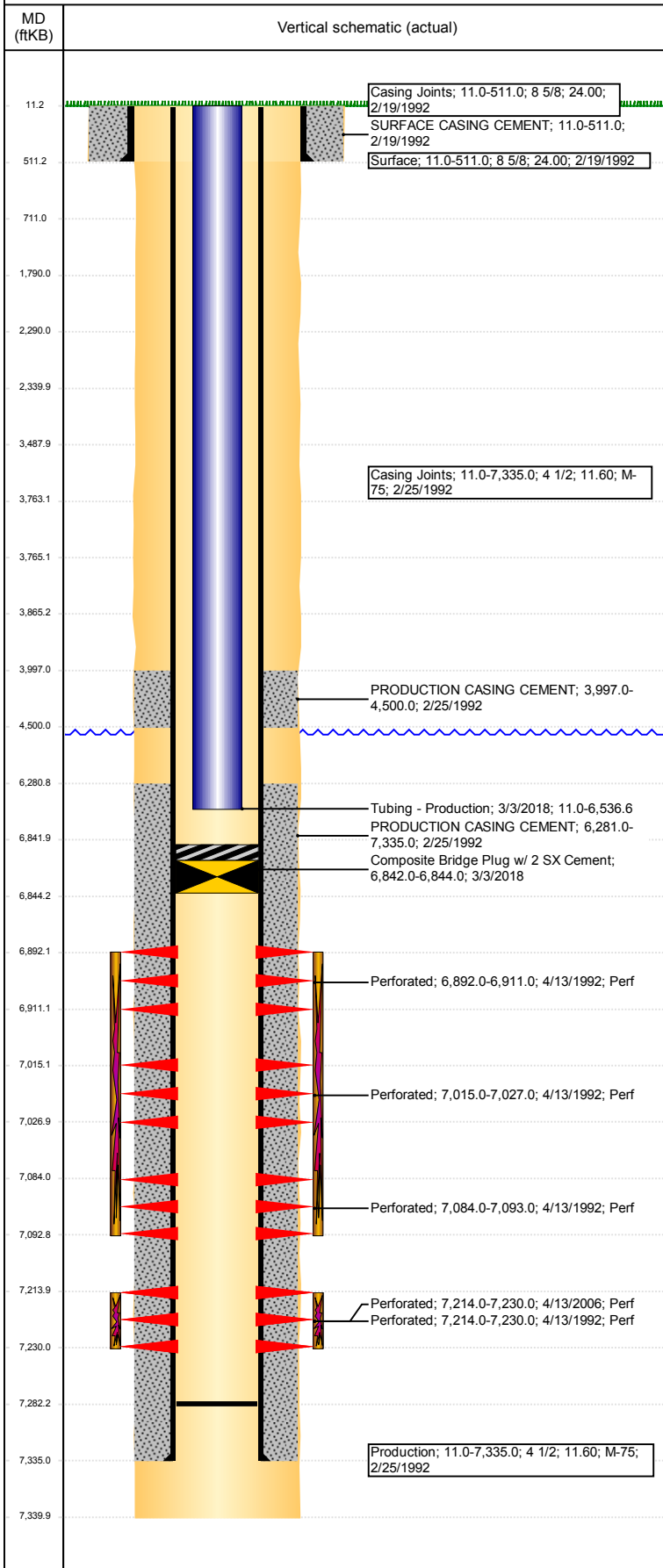
VERTICAL - ORIGINAL HOLE, 3/23/2018 11:41:14 AM



Well Header							
API 05-123-15613		Well Report Center 422124217		Well Configuration Type VERTICAL			
Original KB Elevation (ft) 4,733		KB - GL / MSL (ftKB) 11.00		Spud Date 2/19/1992		P & A Date	
Production Route Watt - C2-08			Well Production Status SI				SoRT Ignore No
Directions To Well 33/46 N .5 E .3 N .1 INTO				Actual Latitude (°) 40.32791272		Actual Longitude (°) -104.74723023	
Comment Ictn mv'd not reflected on logs KB 12' 5K AMOCO HEAD							
Congressional Location							
Quarter 3 SE	Quarter 4 NW	Section 11	Township 4	Twntshp N/S Dir N	Range 66	Range E/W Dir W	
Rig Operator							
Rig Operator							
Plug Back Total Depths							
Date	Depth (ftKB)	Method			Com		
2/25/1992	7,282.0	CASING TALLY					
Wellbore Sections							
Section Des		Size (in)		Act Top, MD (ftKB)		Act Btm, MD (ftKB)	
SURFACE		12 1/4		11		511	
PRODUCTION		7 7/8		511		7,340	
Zone Statuses							
Zone Name		Status Date			Status		
CODELL		4/13/1992			PR		
NIOBRARA		4/13/1992			PR		
Casing Strings							
Surface, 511.0ftKB							
Casing Description Surface	Run Date 2/19/1992	OD (in) 8 5/8	Wt/Len (l... 24.00	Grade	Top, MD (ft... 11.0	MD (ftKB) 511.0	
Production, 7,335.0ftKB							
Casing Description Production	Run Date 2/25/1992	OD (in) 4 1/2	Wt/Len (l... 11.60	Grade M-75	Top, MD (ft... 11.0	MD (ftKB) 7,335.0	
Cement							
Des		Start Date		Top (ftKB)		Btm (ftKB)	
SURFACE CASING CEMENT		2/19/1992		11.0		511.0	
PRODUCTION CASING CEMENT		2/25/1992		3,997.0		4,500.0	
PRODUCTION CASING CEMENT		2/25/1992		6,281.0		7,335.0	
Proposed Cement							
Des				Top (ftKB)		Btm (ftKB)	
Cement Plug				3,997.0		4,500.0	
Cement Plug				3,765.0		3,865.0	
Cement Plug				3,488.0		3,763.0	
Cement Plug				3,488.0		3,865.0	
Cement Plug				2,290.0		2,340.0	
Cement Plug				1,790.0		2,290.0	
Cement Plug				11.0		711.0	
Tubing Strings							
Tubing Description Tubing - Production	Run Date 3/3/2018	String... 2 3/8	ID (in) 2.00	Wt (lb/ft) 4.70	Grade J-55	Len (ft) 6,525.60	Set De...
Tubing Components							
Item Des	OD (in)	Wt (lb/ft)	Grade	Jts	Len (ft)	Btm (ftKB)	Btm (TVD) (ftKB)
EUE 8rd Tubing	2 3/8	4.70	J-55	211	6,524.00	6,535.0	
Pump Seating	2 3/8	1.10		1	1.10	6,536.1	
Nipple							
Notched collar	2 3/8			1	0.50	6,536.6	
Other In Hole							
Run Date	Des			OD (in)	Top (ftKB)	Btm (ftKB)	
3/3/2018	Composite Bridge Plug w/ 2 SX Cement			4	6,842.0	6,844.0	
Proposed Other In Hole							
Des				OD (in)	Top (ftKB)	Btm (ftKB)	
Cement Retainer				4	3,763.0	3,765.0	

Well Name: UPRC 11-06F

VERTICAL - ORIGINAL HOLE, 3/23/2018 11:41:14 AM



Date	Type	Top, MD (ftKB)	Btm, MD (ftKB)
2/25/1992	Compensated Density	3,550.0	7,300.0
2/25/1992	Induction	511.0	7,338.0
2/29/1992	Cement Bond	3,750.0	7,255.0

Linked Zone	Sum of Entered Shot Total	Top (ftKB)	Btm (ftKB)	Date
NIORARA, ORIGINAL HOLE	10	6,892.00	6,911.00	3/5/1992
NIORARA, ORIGINAL HOLE	10	7,015.00	7,027.00	3/5/1992
NIORARA, ORIGINAL HOLE	8	7,084.00	7,093.00	3/5/1992
CODELL, ORIGINAL HOLE	32	7,214.00	7,230.00	3/18/2006
CODELL, ORIGINAL HOLE	64	7,214.00	7,230.00	2/29/1992
Total (Sum)	124			

Linked Zone	Sum of En...	Top Depth (ftKB)	Btm (ftKB)	Date
	0	3,865.00	3,865.00	3/13/2018
Total (Sum)	0			

Supply Item Des	Type	Uni...	Job Category	Total...	Total...	Total...
WATER - LOE	PUBLIC	bbl	ABANDON	220.0	100.0	0.0