

Nichols 0994-24-02W
Mesa County, CO
Q180041 & RM-180039
Design #2

Company Name: Laramie Energy, LLC
Nichols 0994-24-02W
Mesa County, CO
Rig: H&P #290
Created By: Will Jircik
Date: 1/12/2017

PROJECT DETAILS: Mesa County, CO
Geodetic System: US State Plane 1983
Datum: North American Datum 1983
Ellipsoid: GRS 1980
Zone: Colorado Central Zone
System Datum: Mean Sea Level

T

M

Azimuths to True North

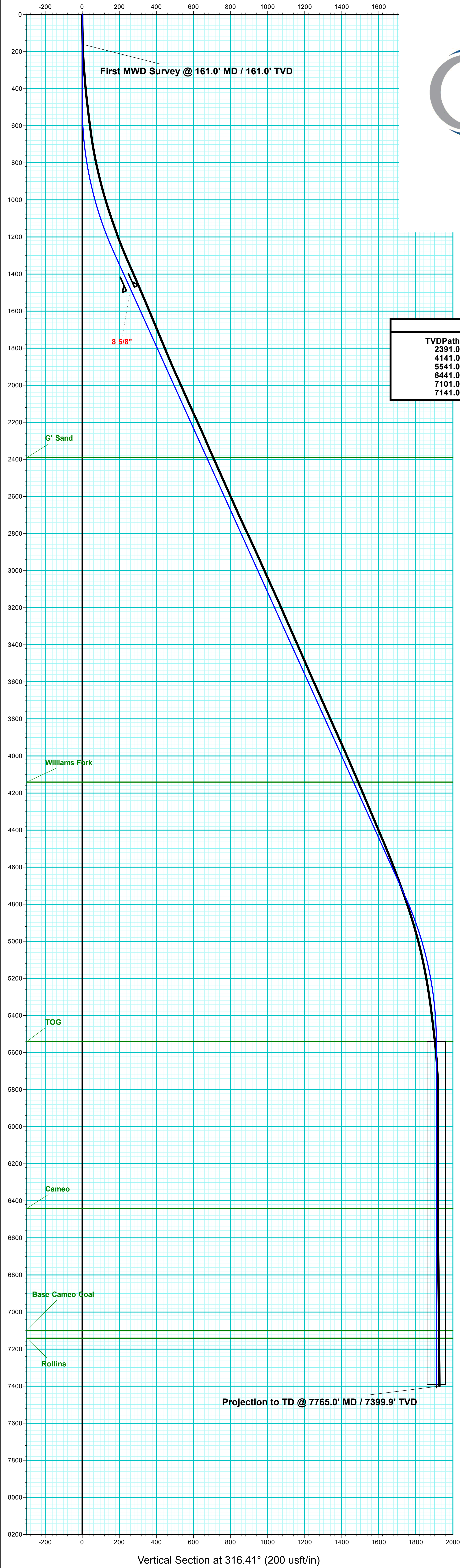
Magnetic North: 9.54°

Strength: 51354.2snT

Dip Angle: 65.42°

Date: 1/6/2018

Model: IGRF2015



FORMATION TOP DETAILS		
TVDPath	MDPath	Formation
2391.0	2523.5	G' Sand
4141.0	4444.2	Williams Fork
5541.0	5928.2	TOG
6441.0	6828.2	Cameo
7101.0	7488.2	Base Cameo Coal
7141.0	7528.2	Rollins

ANNOTATIONS									
MD	Inc	Azi	TVD	+N/-S	+E/-W	VSect	Departure	Annotation	
494.0	0.00	0.00	494.0	0.0	0.0	0.0	0.0	KOP (Build 3° / 100')	
1305.4	24.34	316.41	1281.2	123.0	-117.1	169.8	169.8	EOB @ 24.34° Inc. / 316.41° Azm	
5116.8	24.34	316.41	4753.8	1260.8	-1200.3	1740.7	1740.7	Drop 3° / 100'	
5928.2	0.00	0.00	5541.0	1383.7	-1317.3	1910.5	1910.5	EOD @ Vertical	
7778.2	0.00	0.00	7391.0	1383.7	-1317.3	1910.5	1910.5	TD @ 7778.2' MD / 7391.0' TVD	

DESIGN TARGET DETAILS								
Name	TVD	+N/-S	+E/-W	Northing	Easting	Latitude	Longitude	Shape
PBHL - Nichols 0994-24-02W	7391.0	1383.7	-1317.3	1531170.16	2338934.70	39.268468	-107.835247	Circle (Radius: 50.0)

