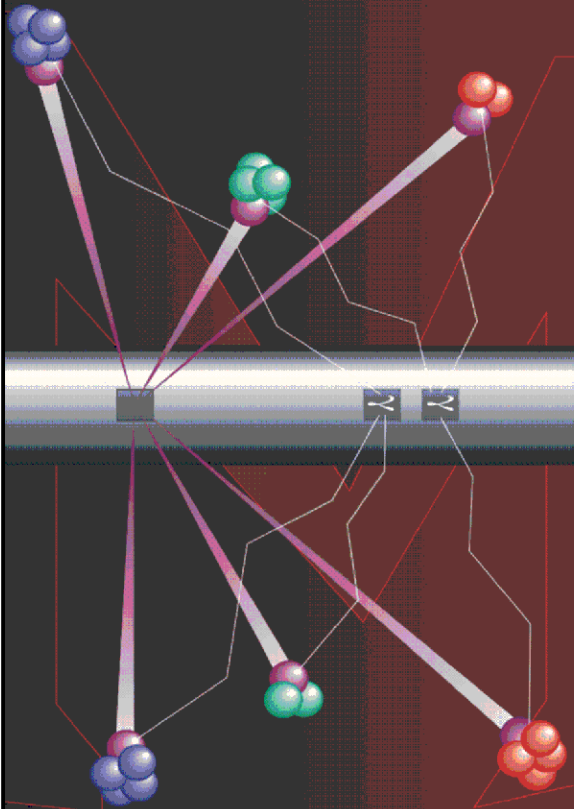


Pulsed Neutron Formation Evaluation



RESERVOIR PERFORMANCE MONITOR NEO Neutron Emulated Openhole

COMPANY LARAMIE ENERGY II, LLC

WELL NICHOLS 0994-24-02E

FIELD VEGA

COUNTY MESA STATE COLORADO

LOCATION:

SEE REMARKS

SEC 24 TWP 9S RGE 94W

ELEVATIONS:

KB 7161 FT DF GL 7137 FT

DATE 13-MAR-2018 ECC 132929

IN MAKING INTERPRETATIONS OF LOGS OUR EMPLOYEES WILL GIVE THE CUSTOMER THE BENEFIT OF THEIR BEST JUDGEMENT. BUT SINCE ALL INTERPRETATIONS ARE OPINIONS BASED ON INFERENCES FROM ELECTRICAL OR OTHER MEASUREMENTS, WE CANNOT, AND WE DO NOT GUARANTEE THE ACCURACY OR CORRECTNESS OF ANY INTERPRETATION. WE SHALL NOT BE LIABLE OR RESPONSIBLE FOR ANY LOSS, COST, DAMAGES, OR EXPENSES WHATSOEVER INCURRED OR SUSTAINED BY THE CUSTOMER RESULTING FROM ANY INTERPRETATION MADE BY ANY OF OUR EMPLOYEES.

COMPUTATION PARAMETERS

COMPUTATION	LOGS USED: <u>RPM-C</u>		PROGRAM: <u>NEO</u>
	CENTER: <u>HOUSTON</u>	LOG ANALYST: <u>KIMBERLY ELLSWORTH</u>	DATE: <u>13-MAR-2018</u>
FIELD DATA	LOCATION: <u>GRAND JUNCTION</u>	ENGINEER: <u>R. ZUNIGA</u>	DATE: <u>11-MAR-2018</u>

FROM	TO								
<u>2427 FT</u>	<u>7497 FT</u>								

REMARKS

LOCATION: SHL: 1797' FNL & 2783' FEL
BHL: 348' FNL & 1531' FEL

TRAINING WELL:
NICHOLS 24-06W

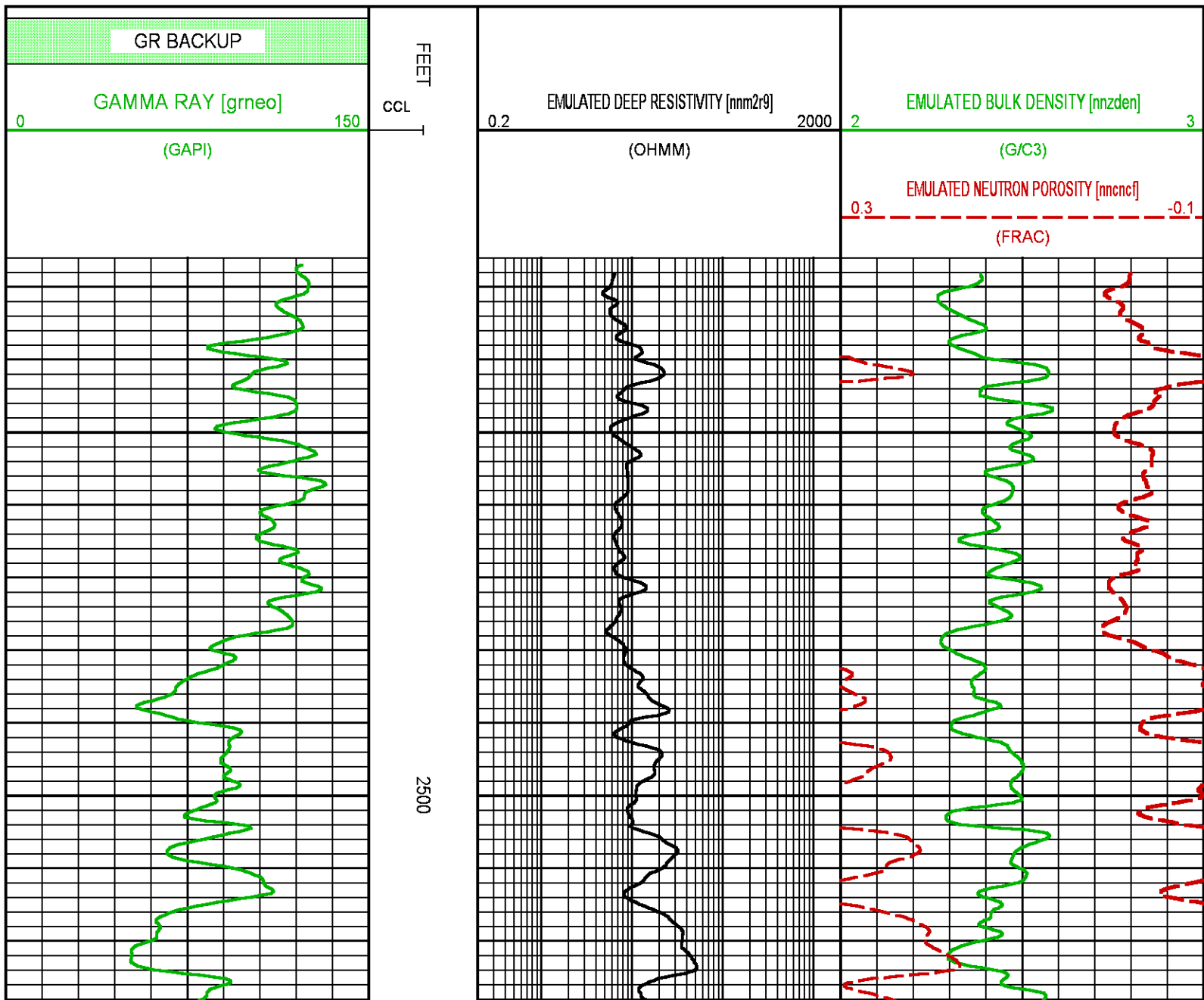
ANY ERRORS IN THE TRAINING WELL OPENHOLE DATA CAN PERETUATE THROUGH AS ERROR IN THE EMULATED RESULTS

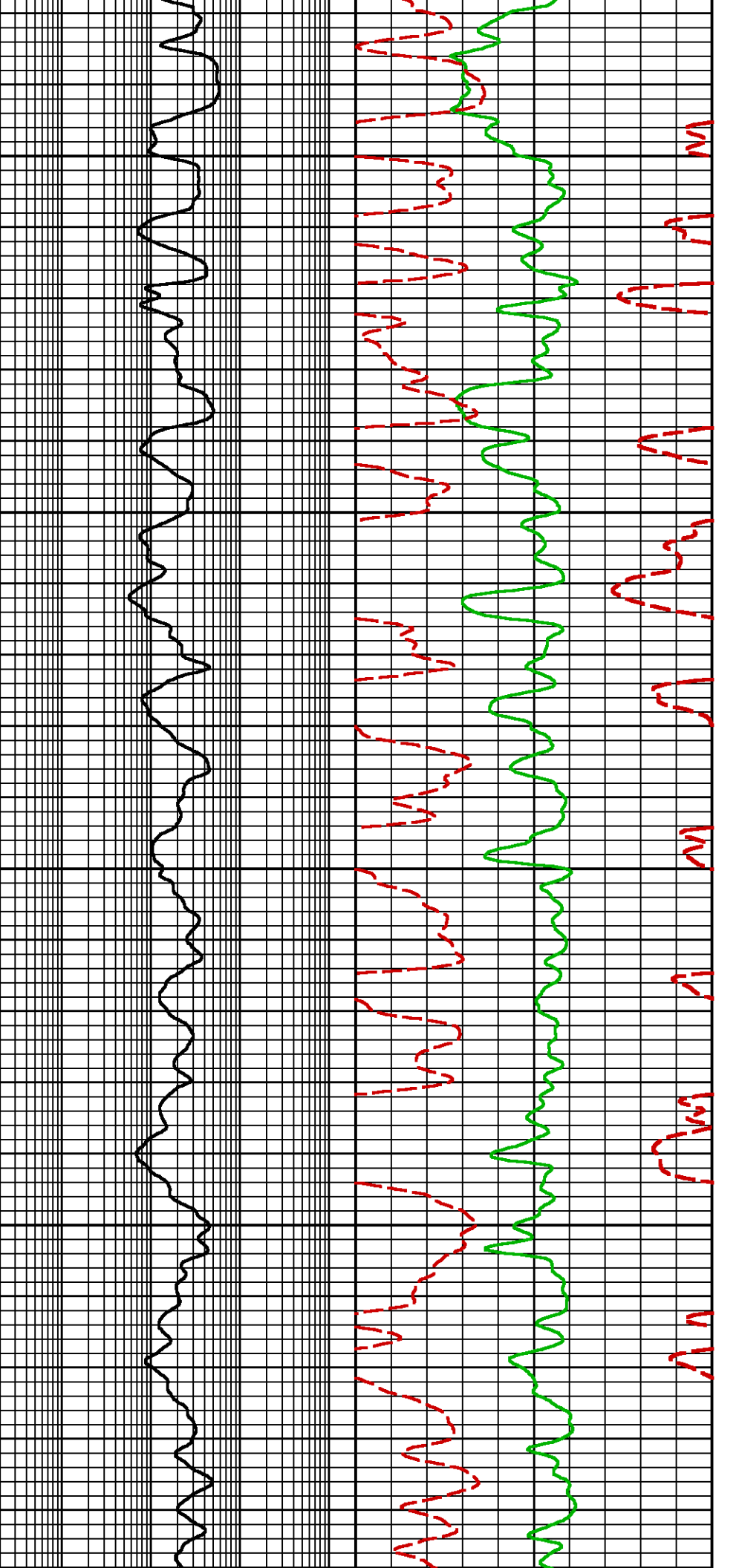
BOND LOG IS DEPTH REFERENCE LOG

NEO RESULTS FOR NICHOLS 24-02E (G-SAND)

Project : NA
User : ellskima
Presentation : BHI3BKZH12:C:\Ape_Projects\laramie_nichols_24_02e\NEO_PRESENTATION_LARAMIE_G-Sand.pdf [5"/100' Scale]
Plot Interval : 2427 - 3050 Feet

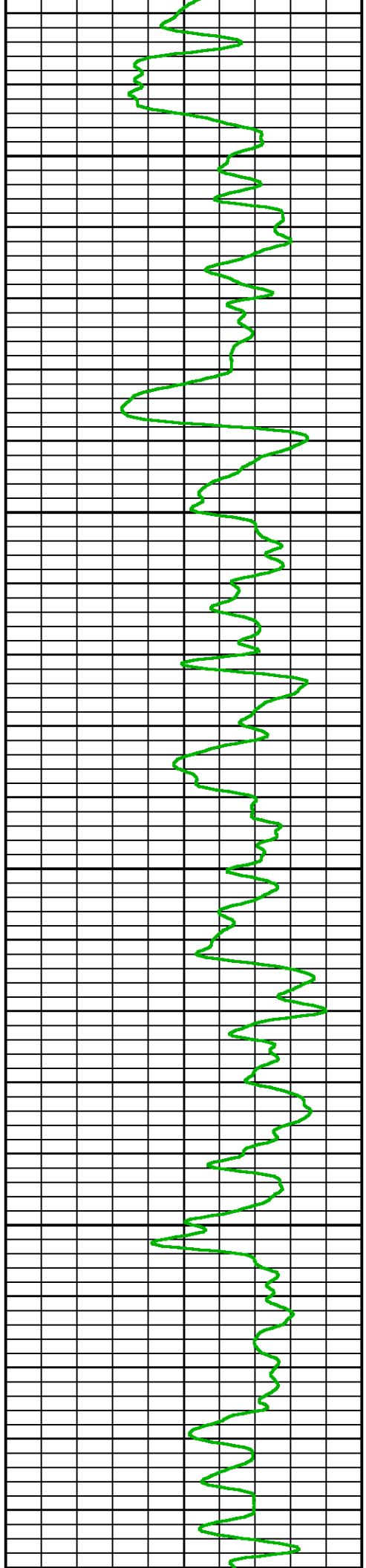
Data File 1 : F1 : BHI3BKZH12:C:\Ape_Projects\laramie_nichols_24_02e\Merged_Set_Final.xtf
Created On : N/A
Company : LARAMIE ENERGY II, LLC
Well : NICHOLS 0994-24-02E
Field : VEGA
File Interval : 2427 - 7696 Feet
OCT : NA

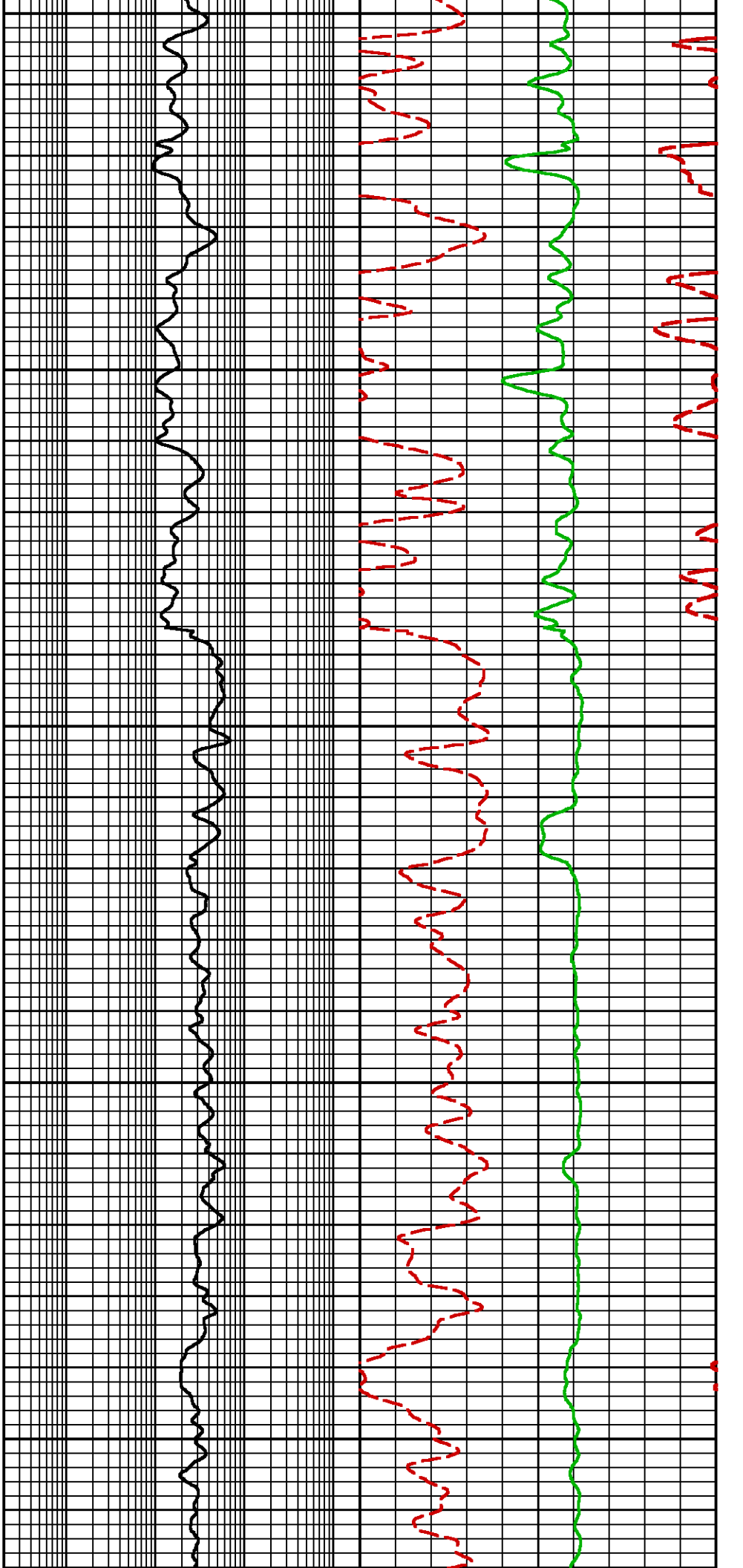




2600

2700

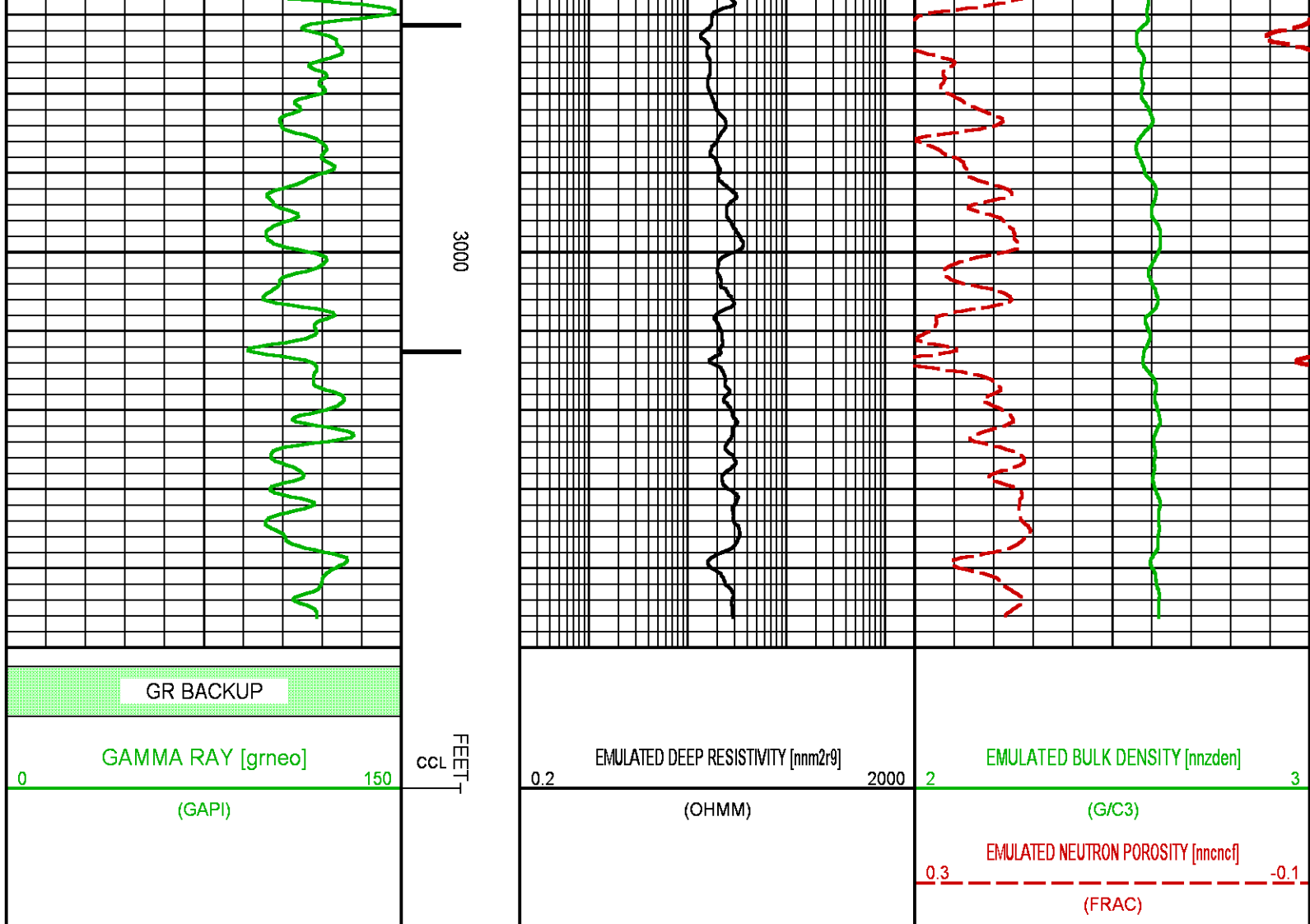




2800

2900

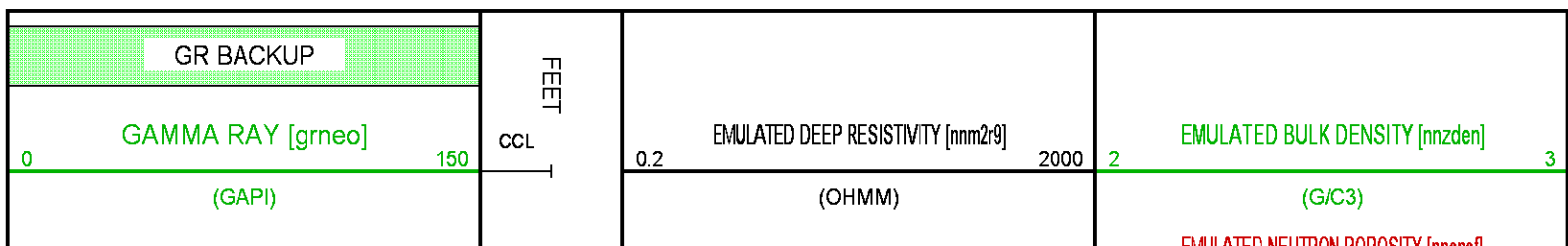




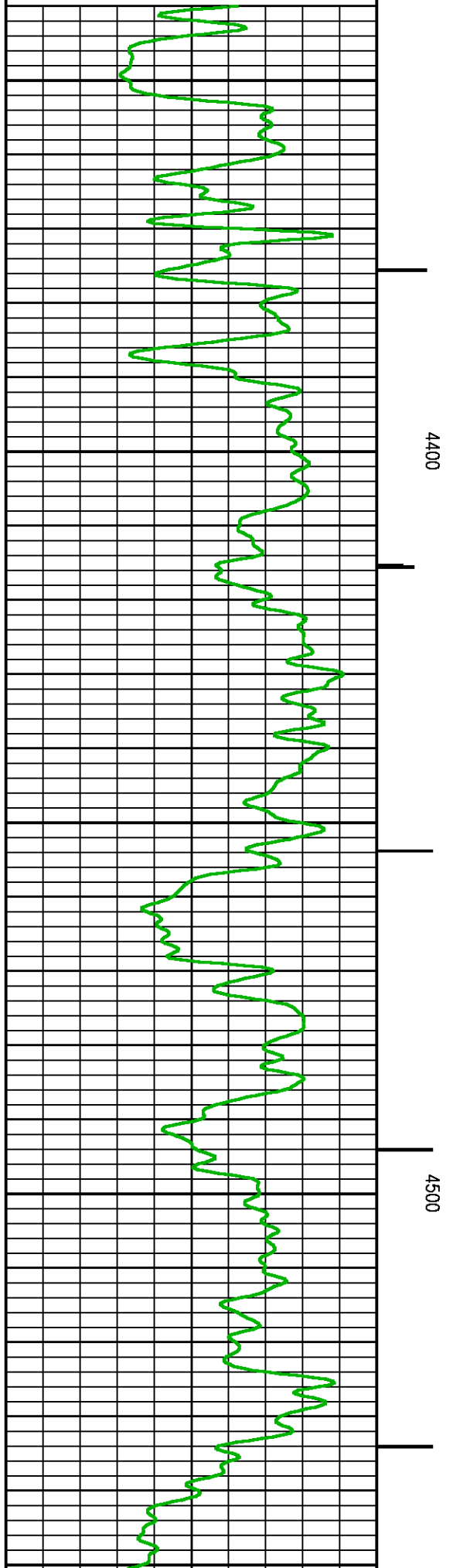
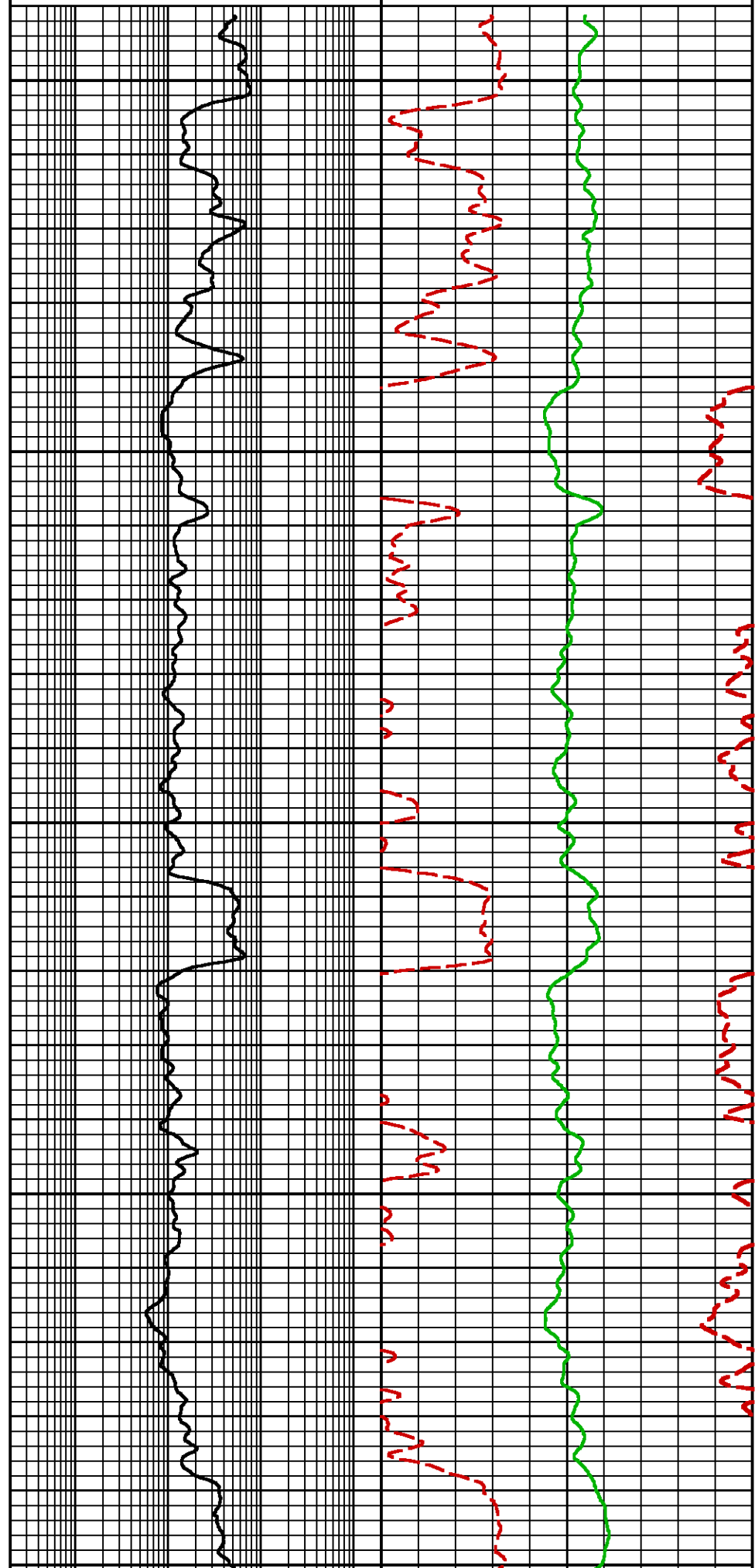
NEO RESULTS FOR NICHOLS 24-02E (MAIN)

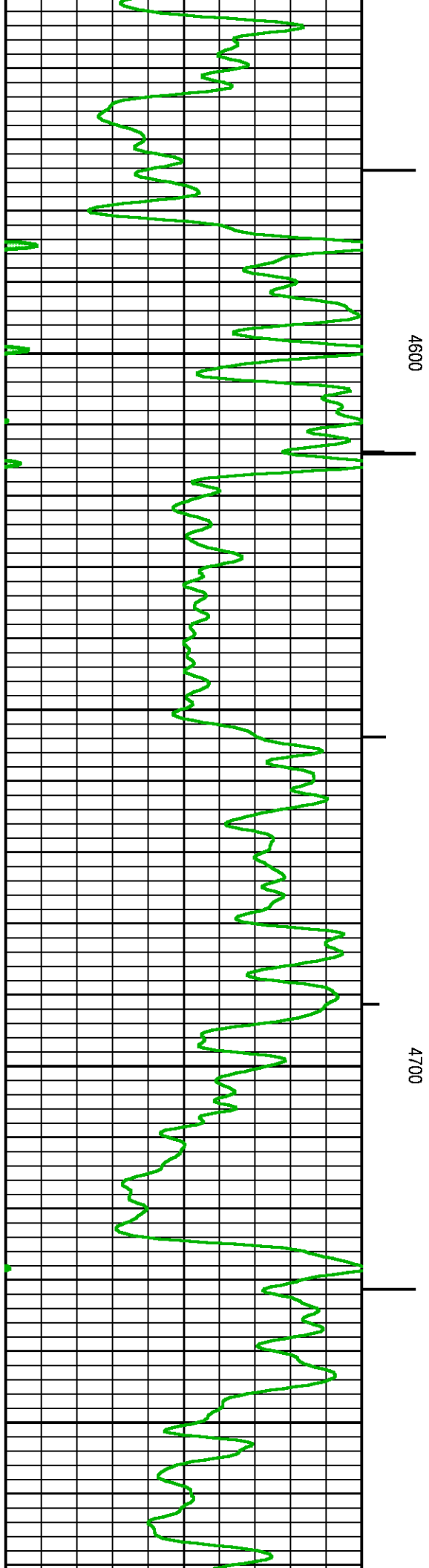
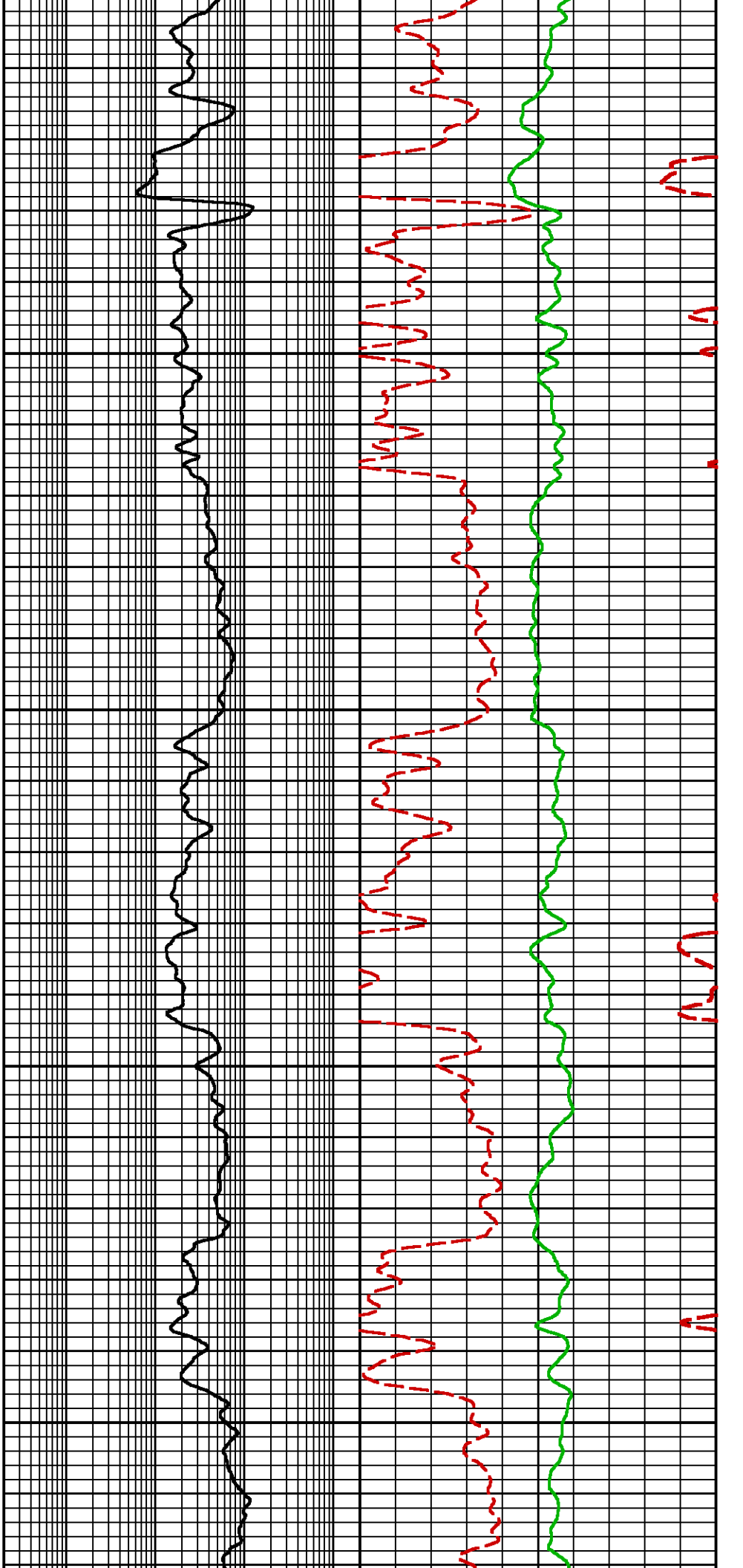
Project : NA
User : ellskima
Presentation : BHI3BKZH12:C:\Ape_Projects\laramie_nichols_24_02e\NEO_PRESENTATION_LARAMIE_MAIN.pdf [5"/100' Scale]
Plot Interval : 4340 - 7696 Feet

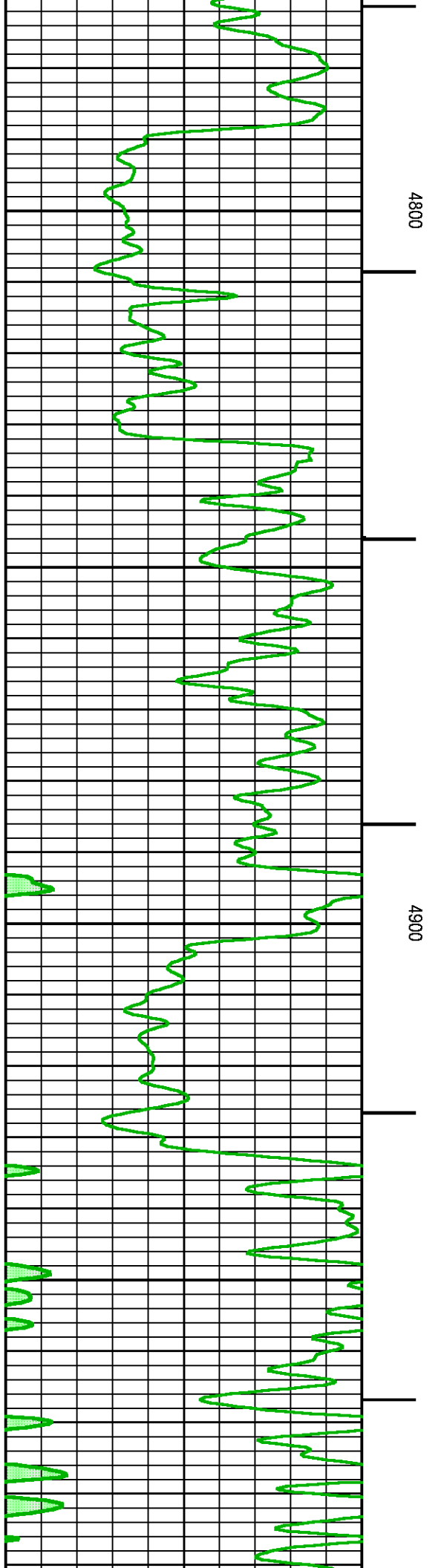
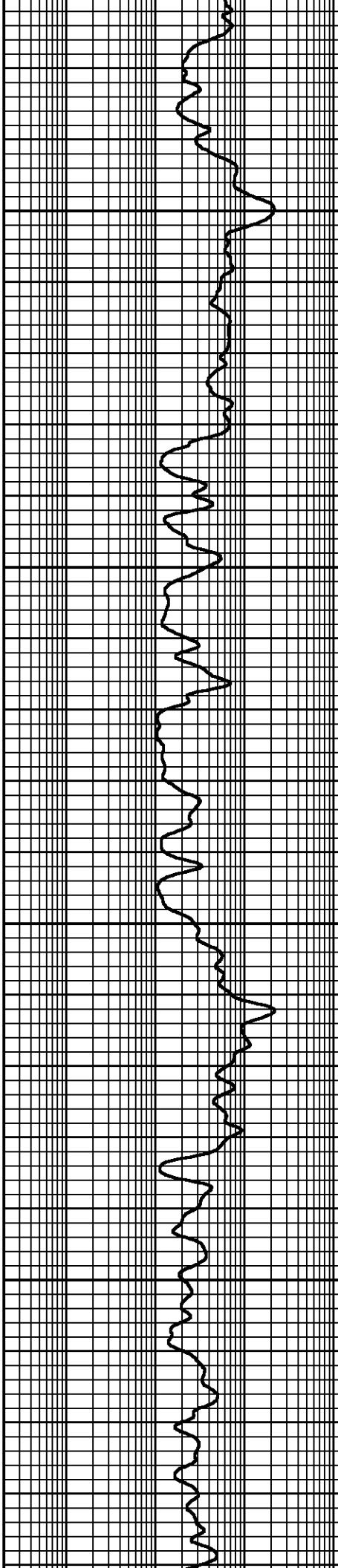
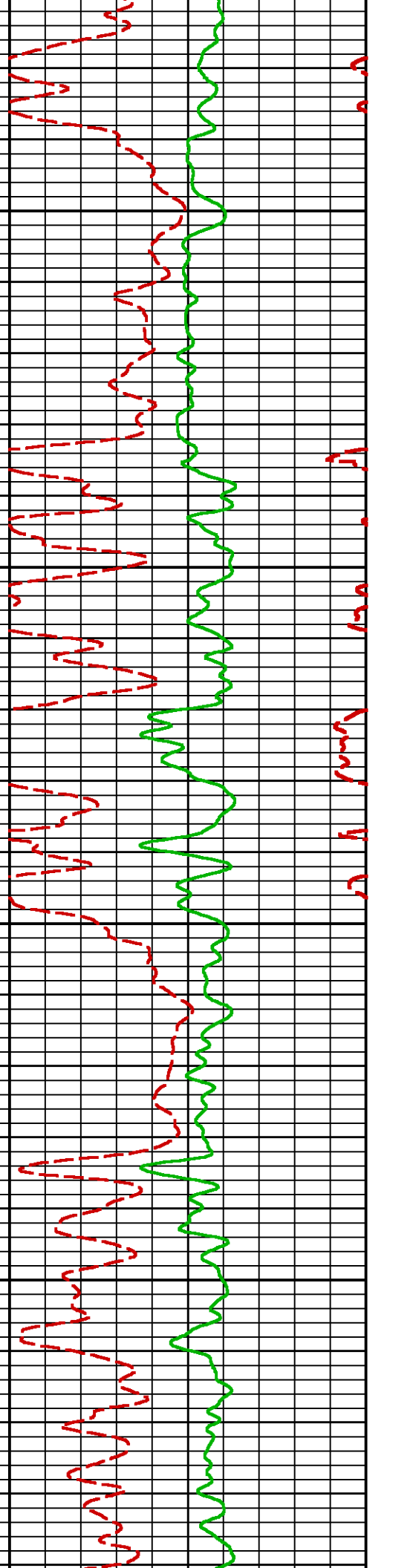
Data File 1 : F1 : BHI3BKZH12:C:\Ape_Projects\laramie_nichols_24_02e\Merged_Set_Final.xtf
Created On : N/A
Company : LARAMIE ENERGY II, LLC
Well : NICHOLS 0994-24-02E
Field : VEGA
File Interval : 2427 - 7696 Feet
OCT : NA

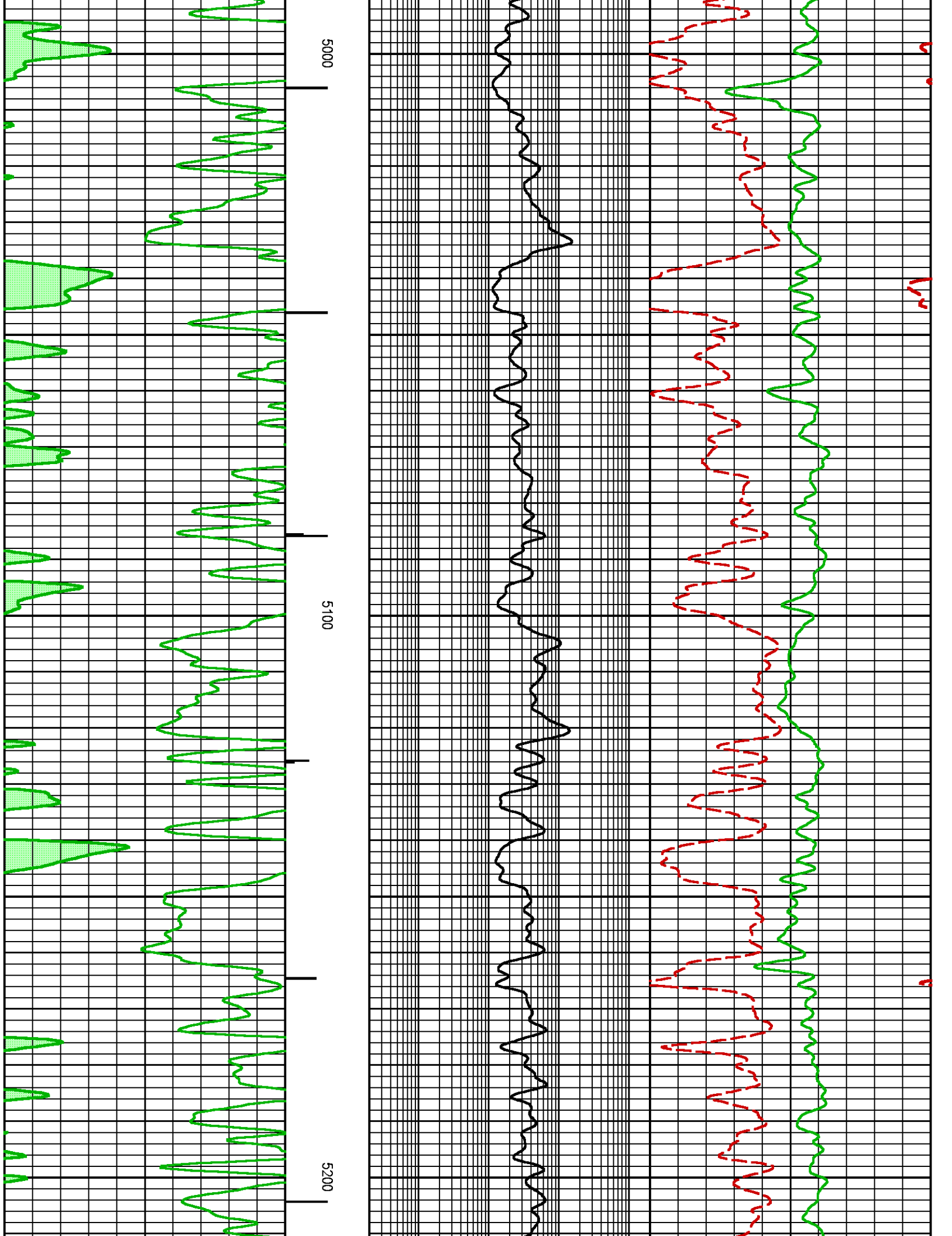


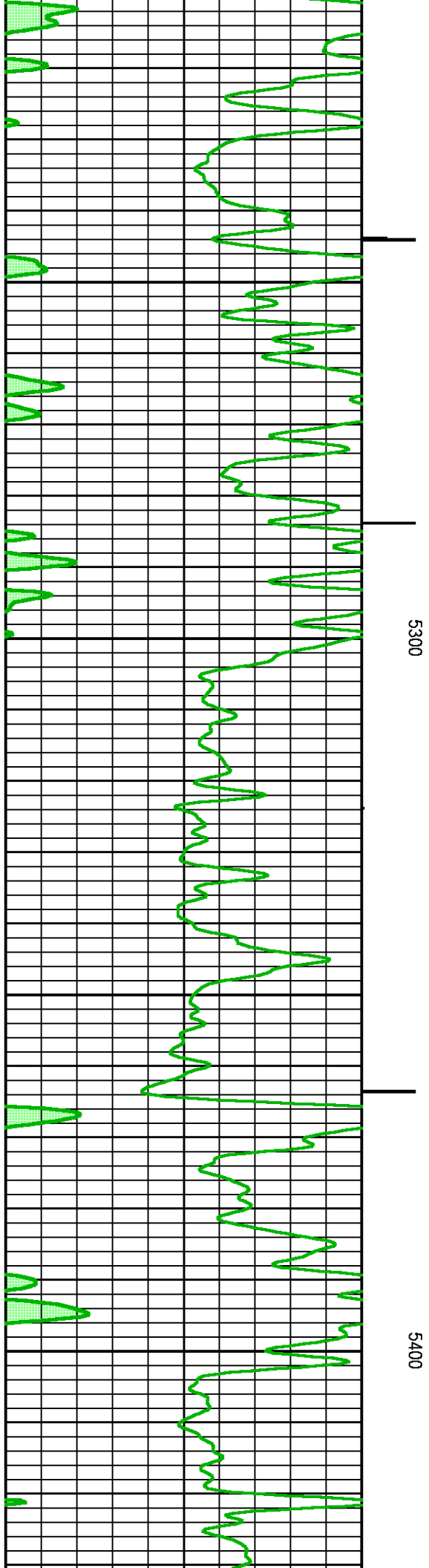
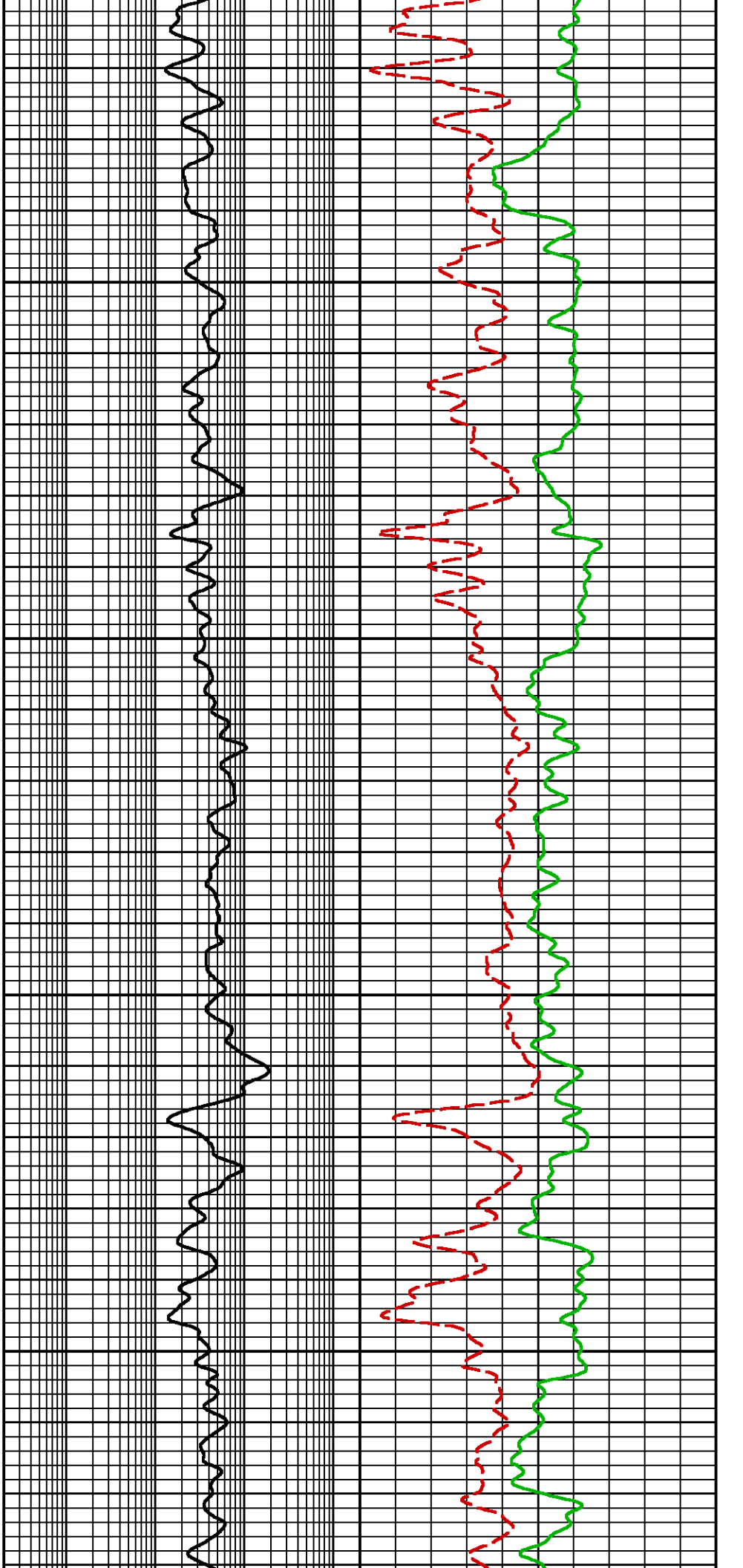
(FRAC)

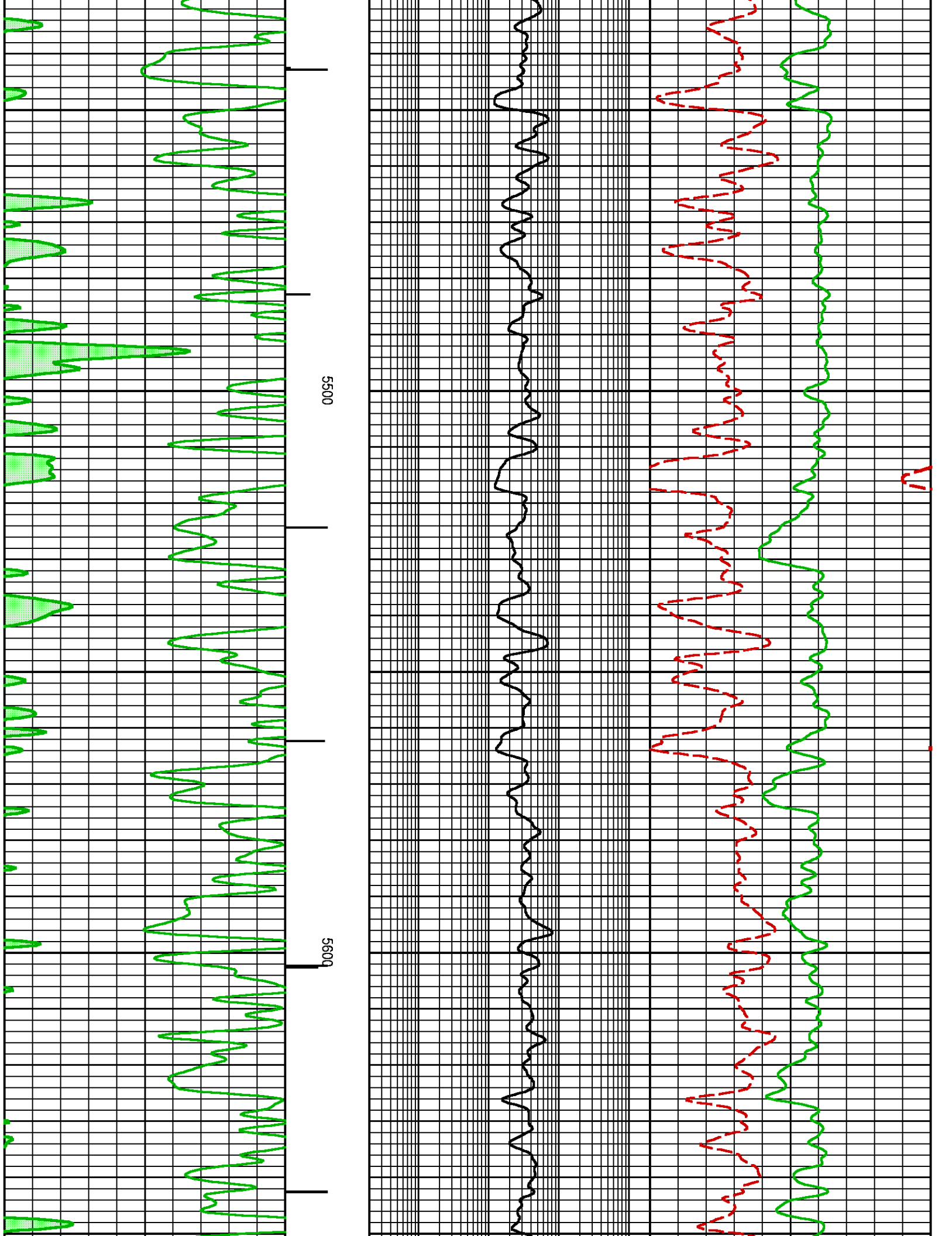


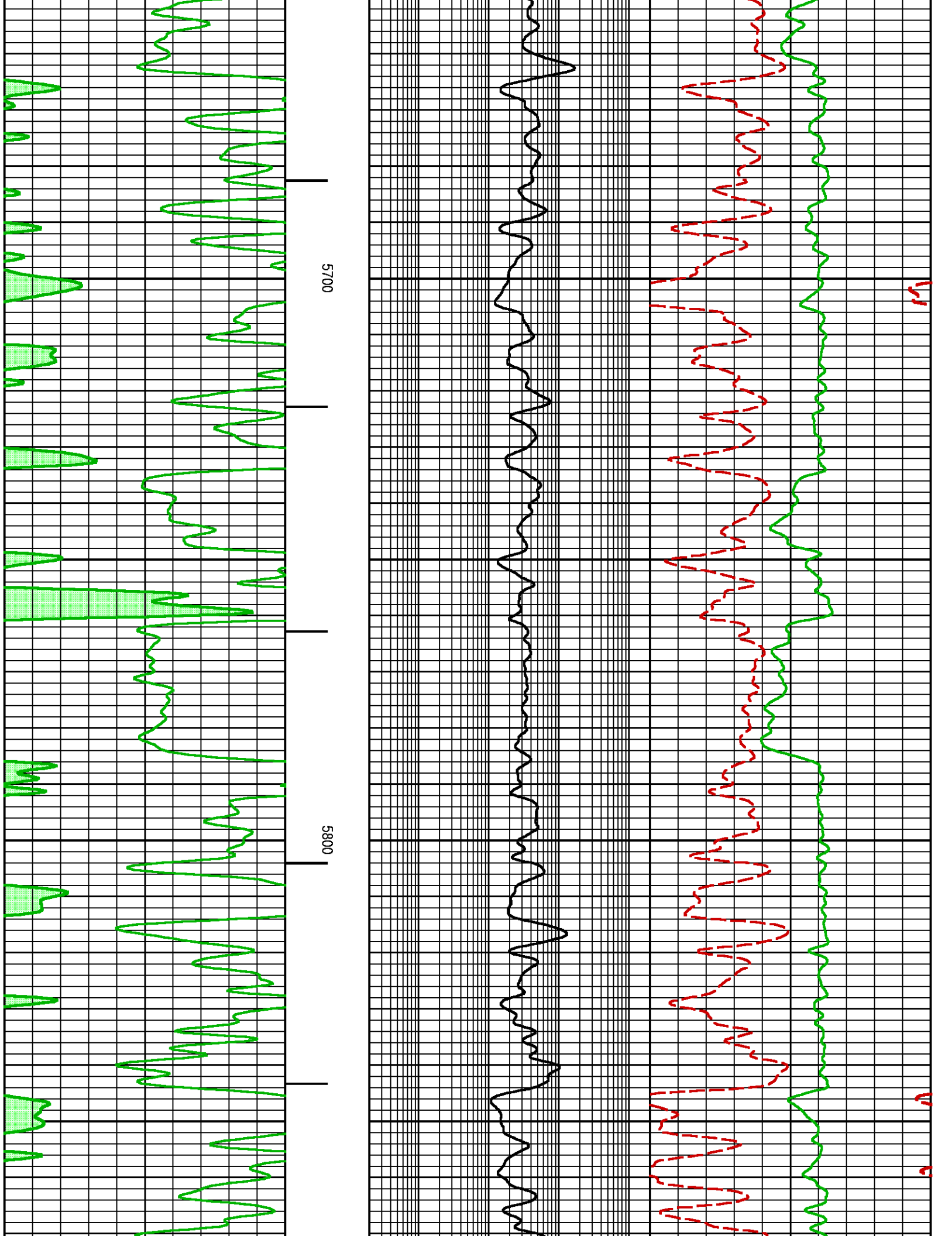


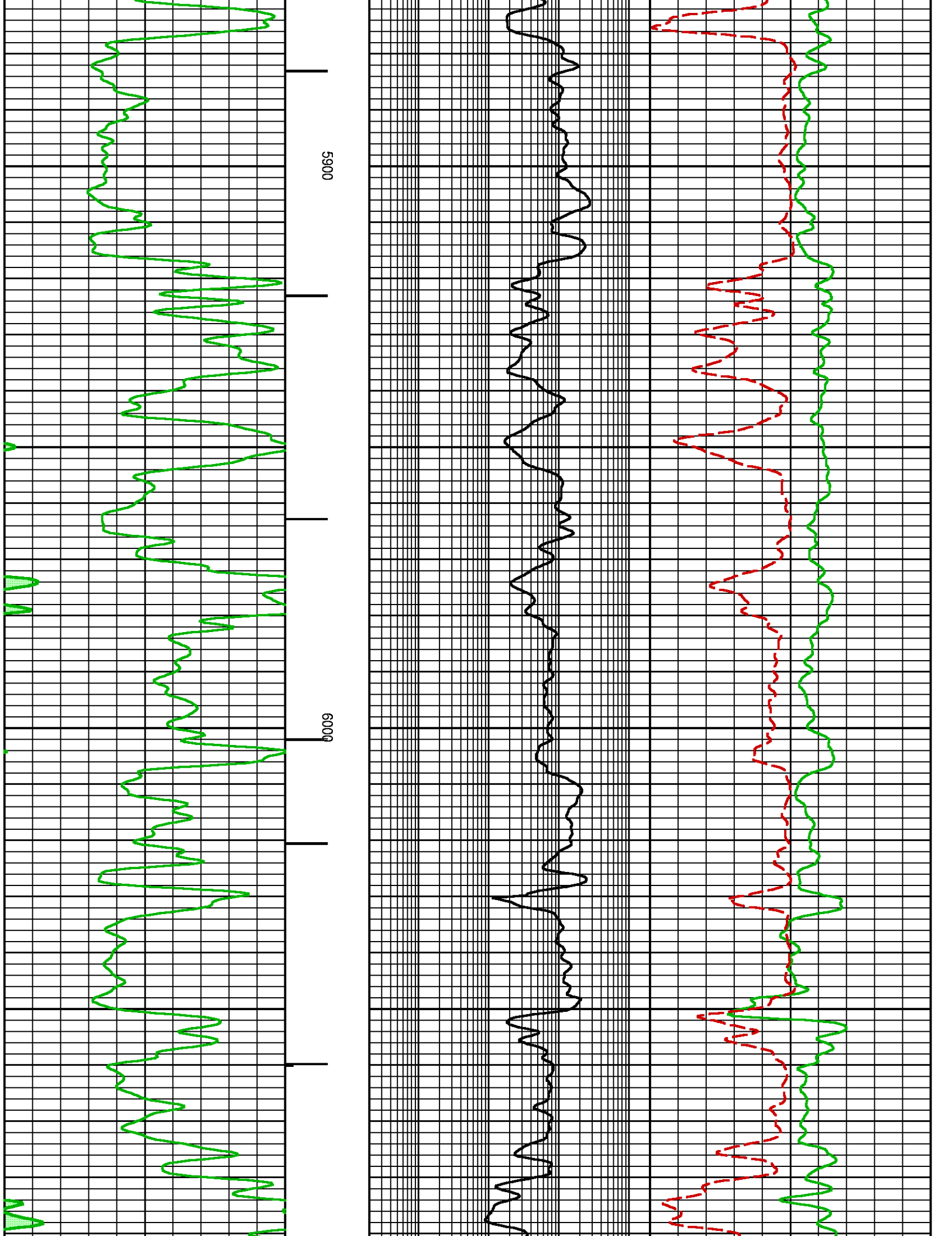


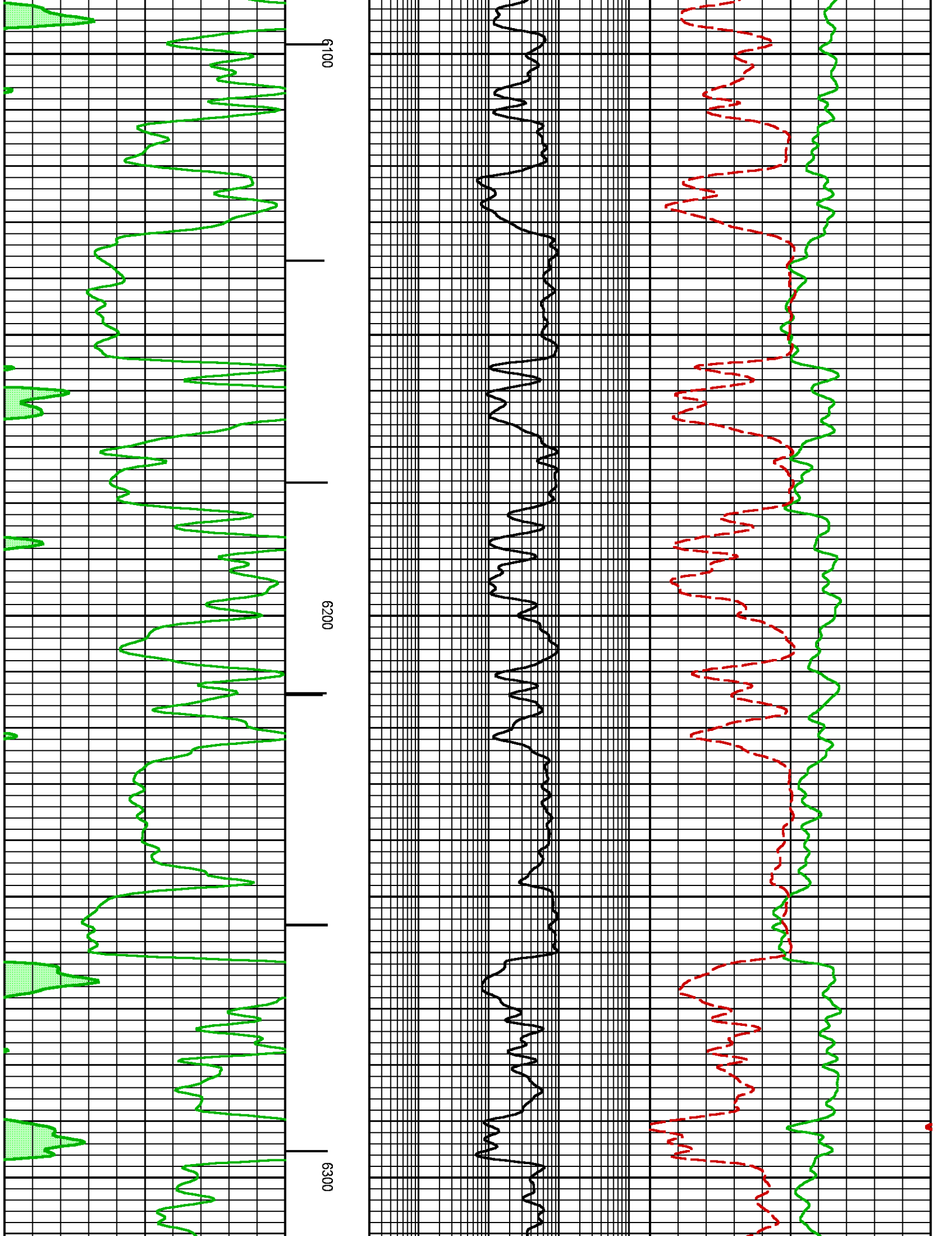


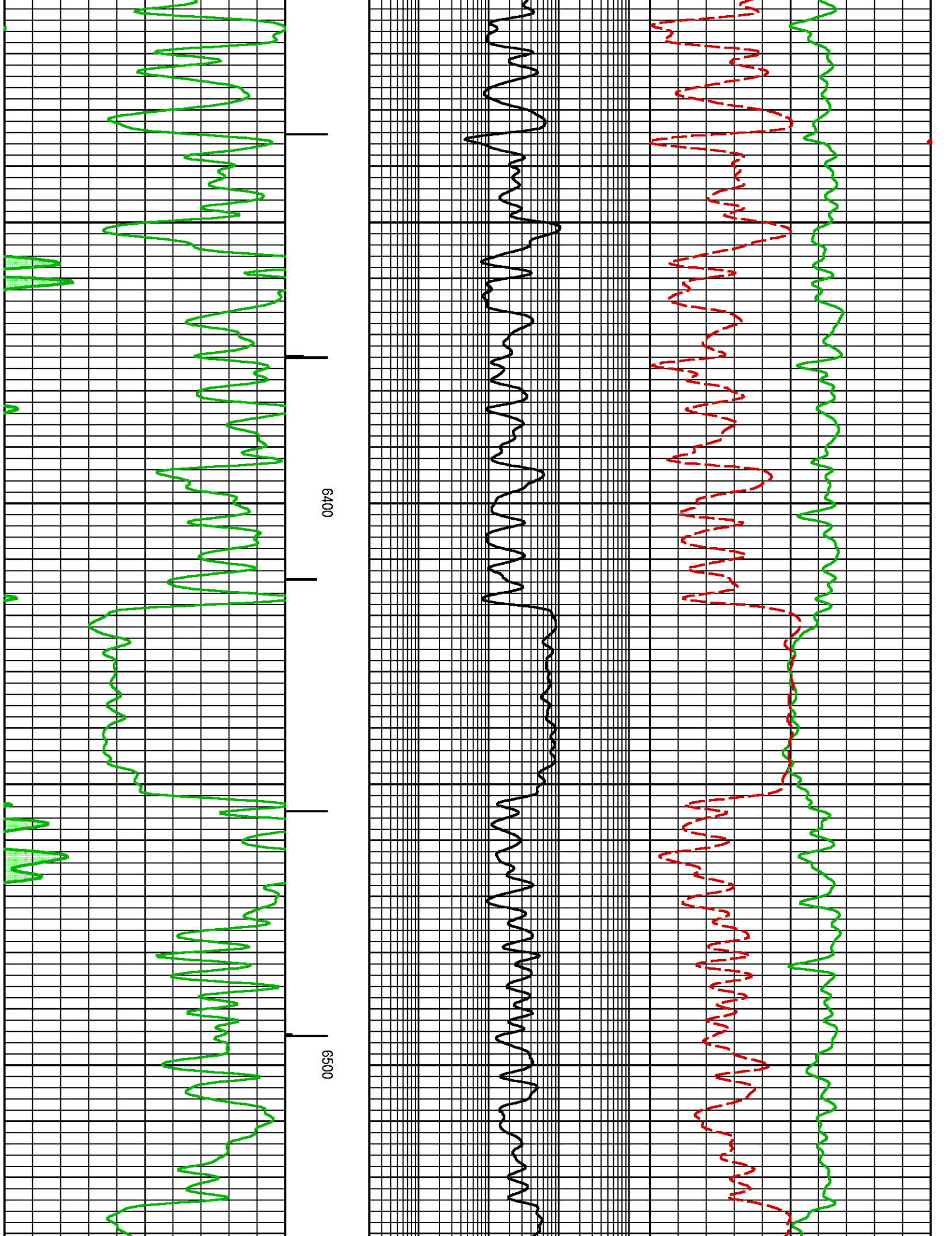


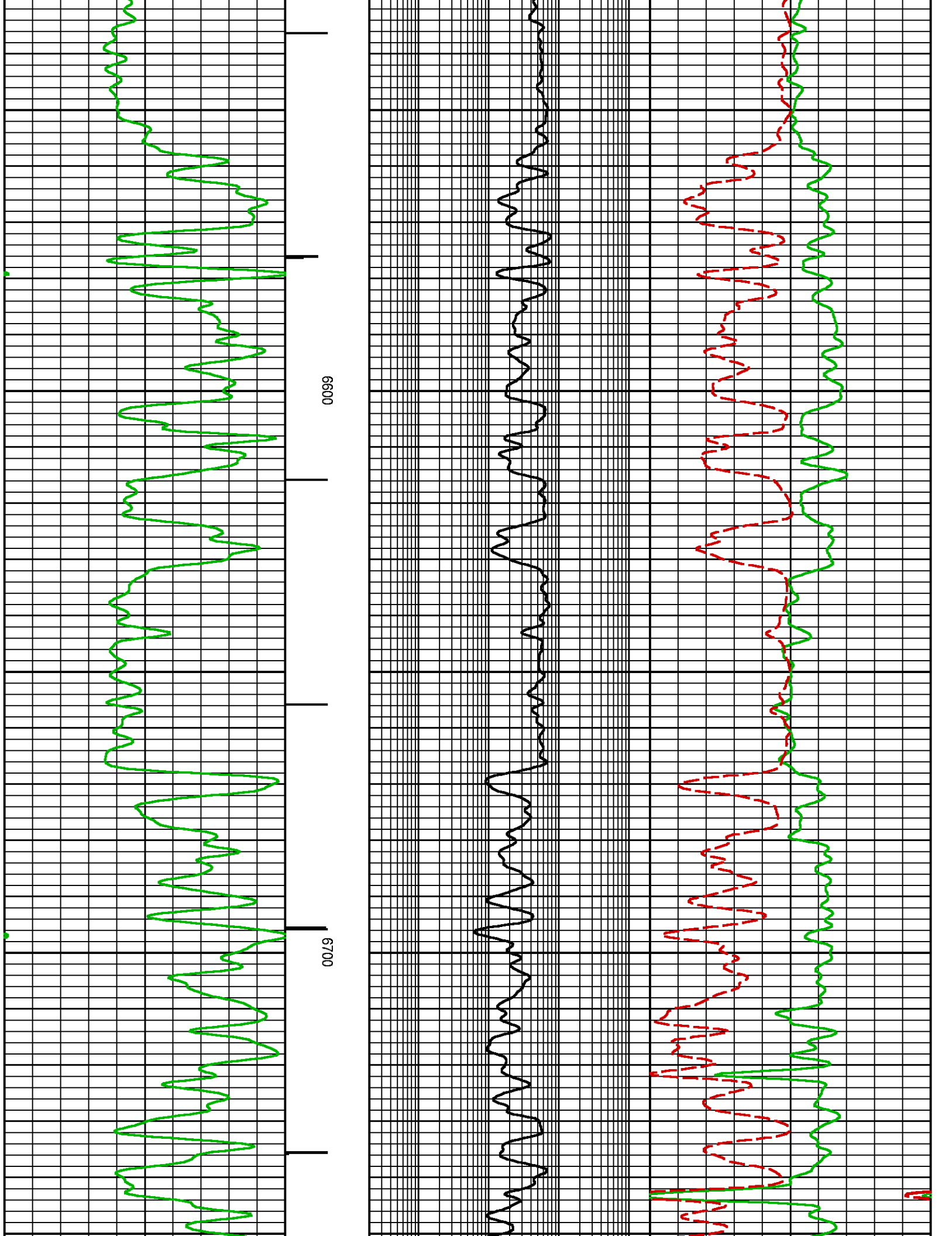


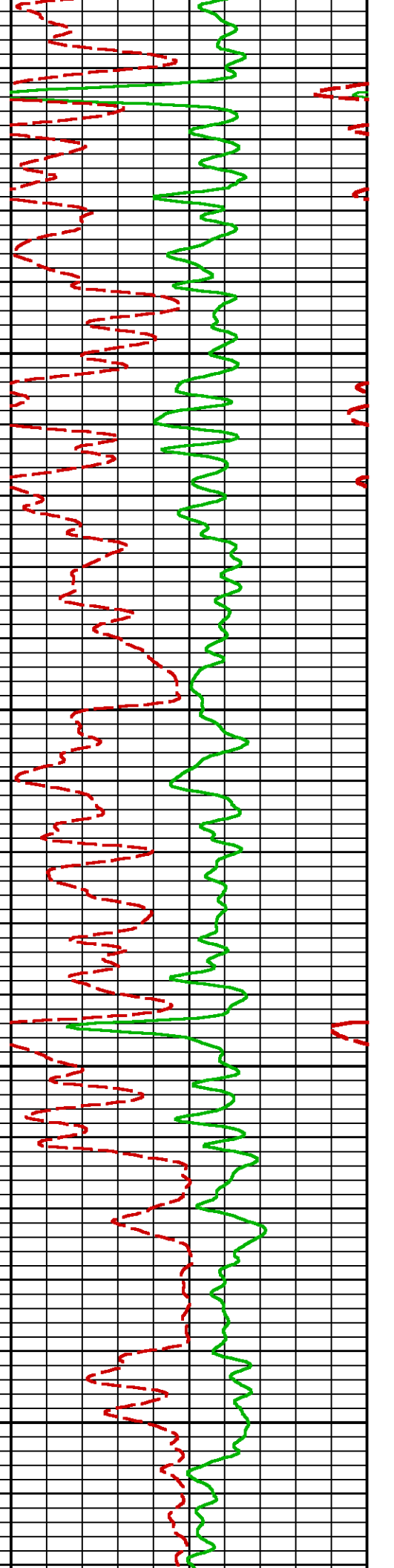
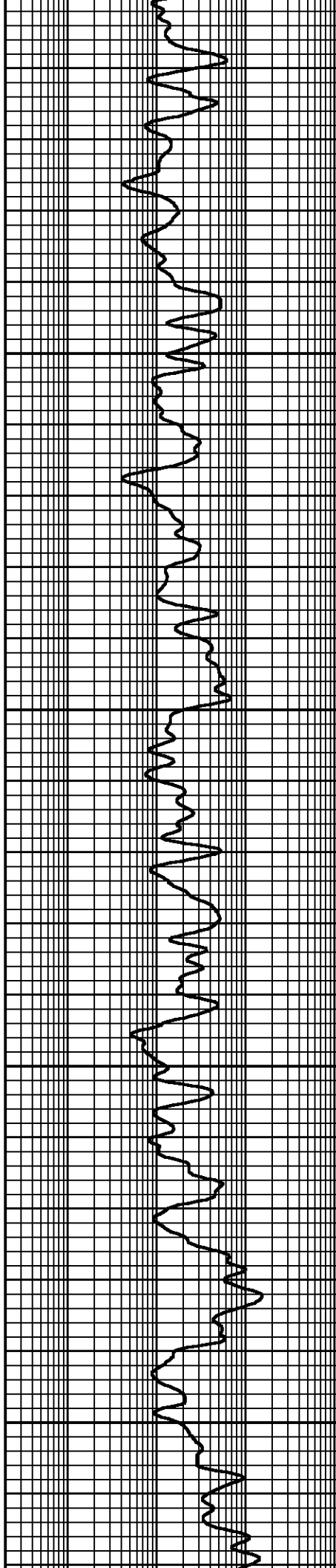
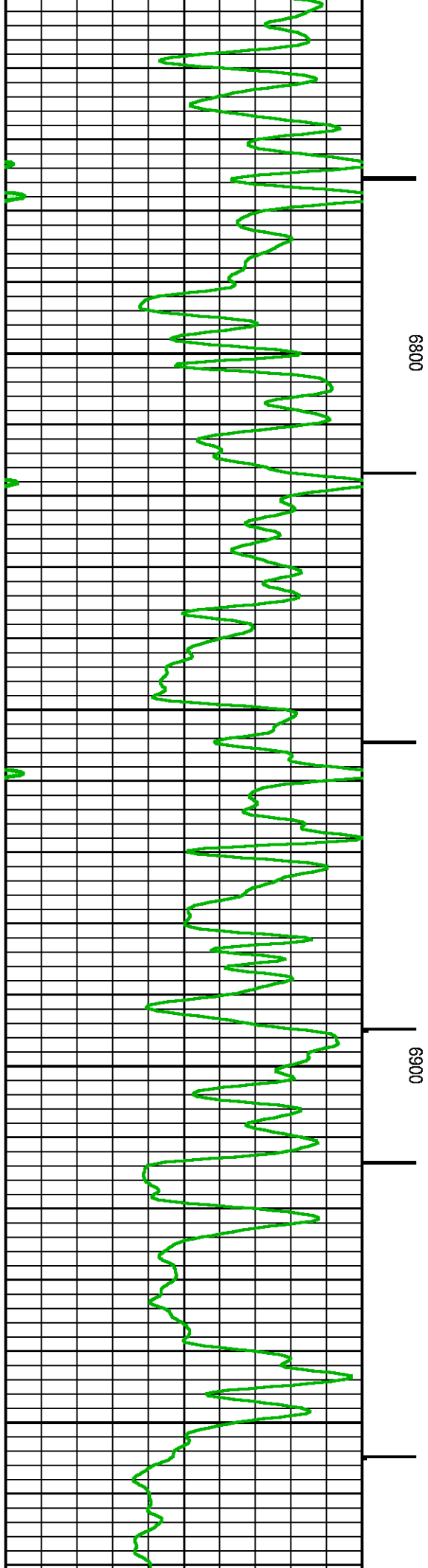


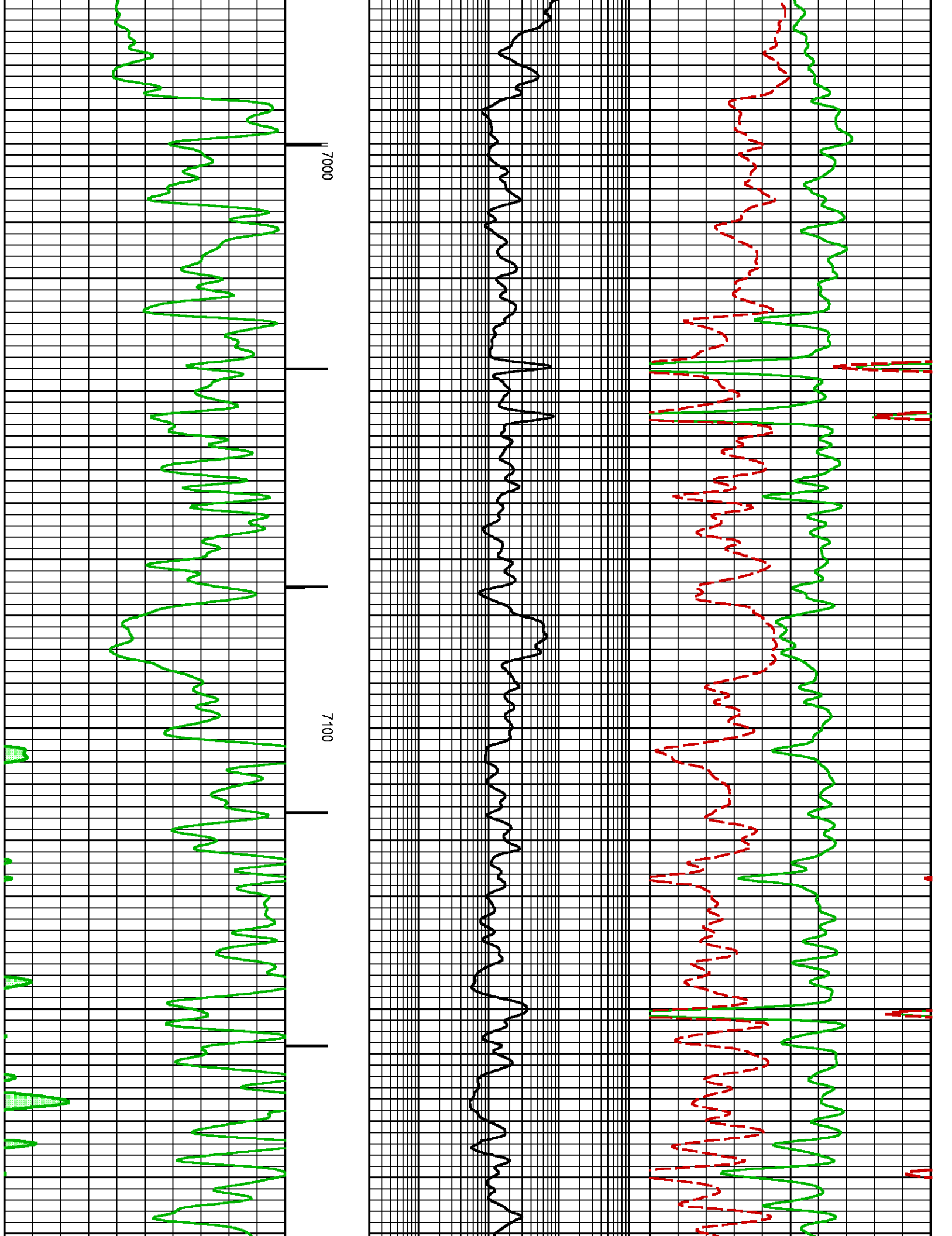


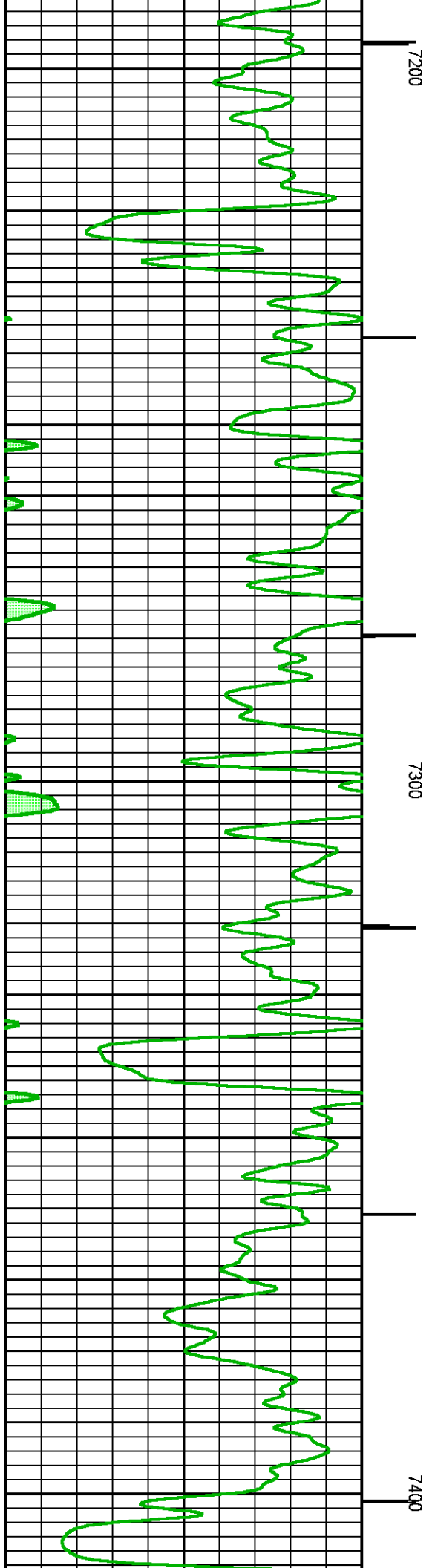
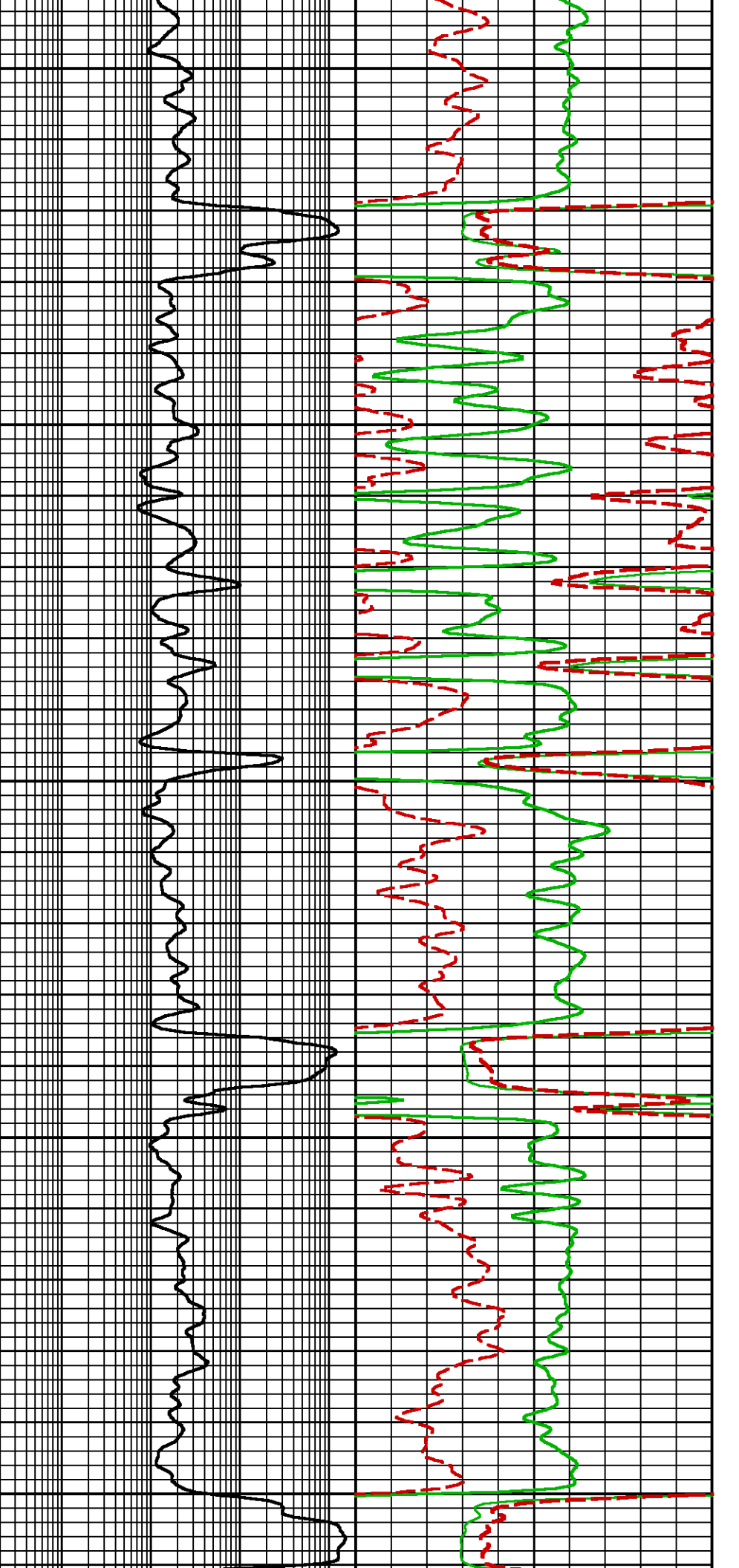


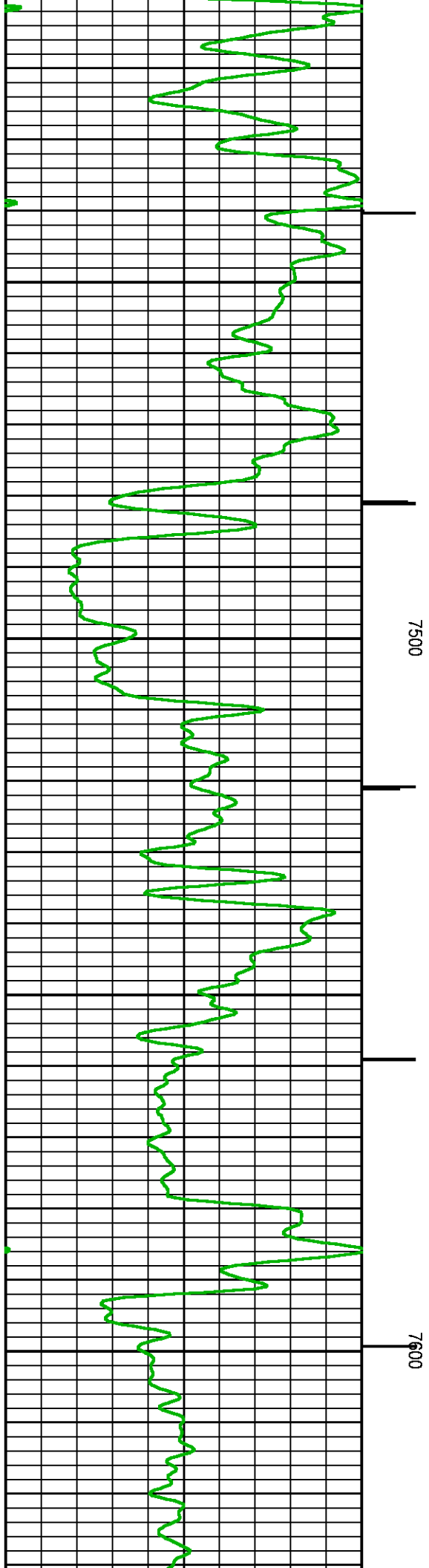
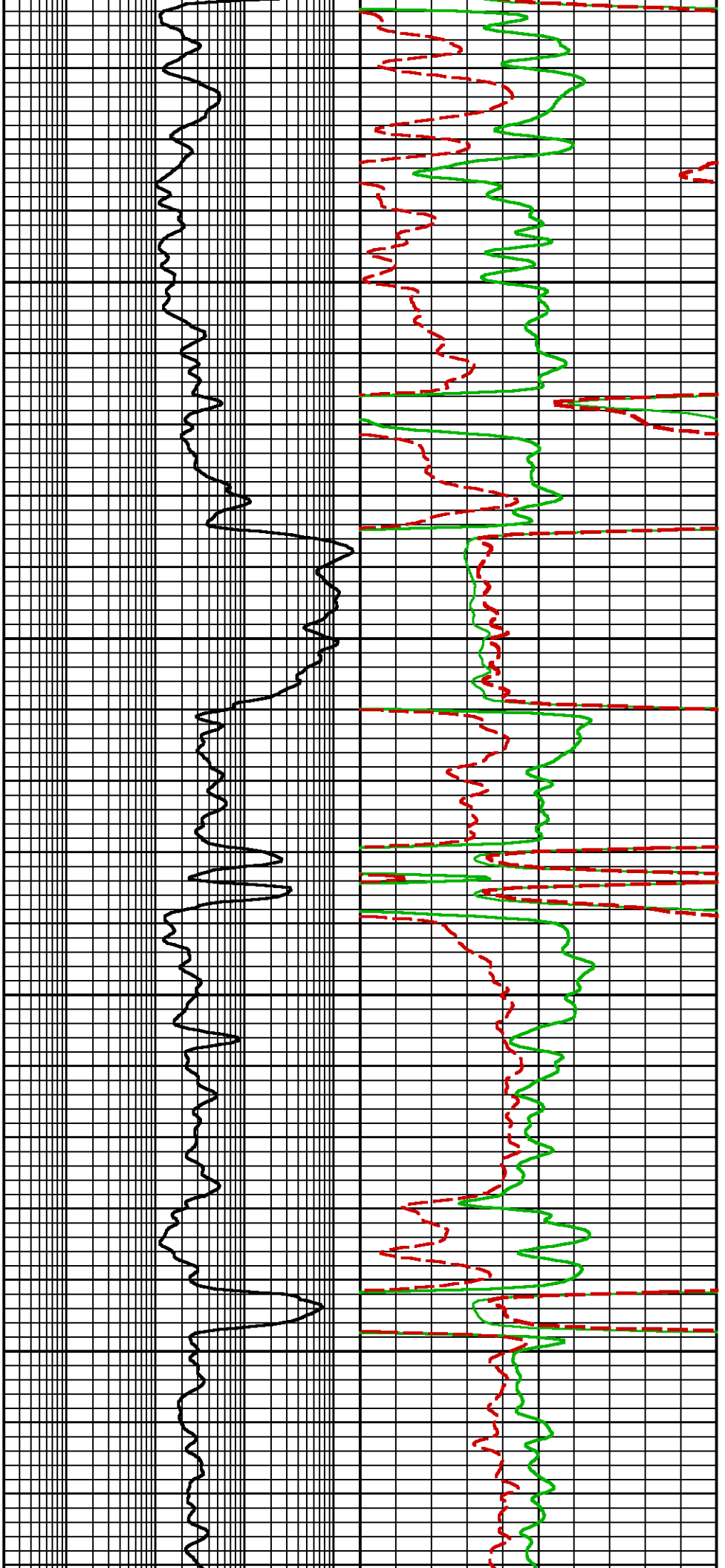


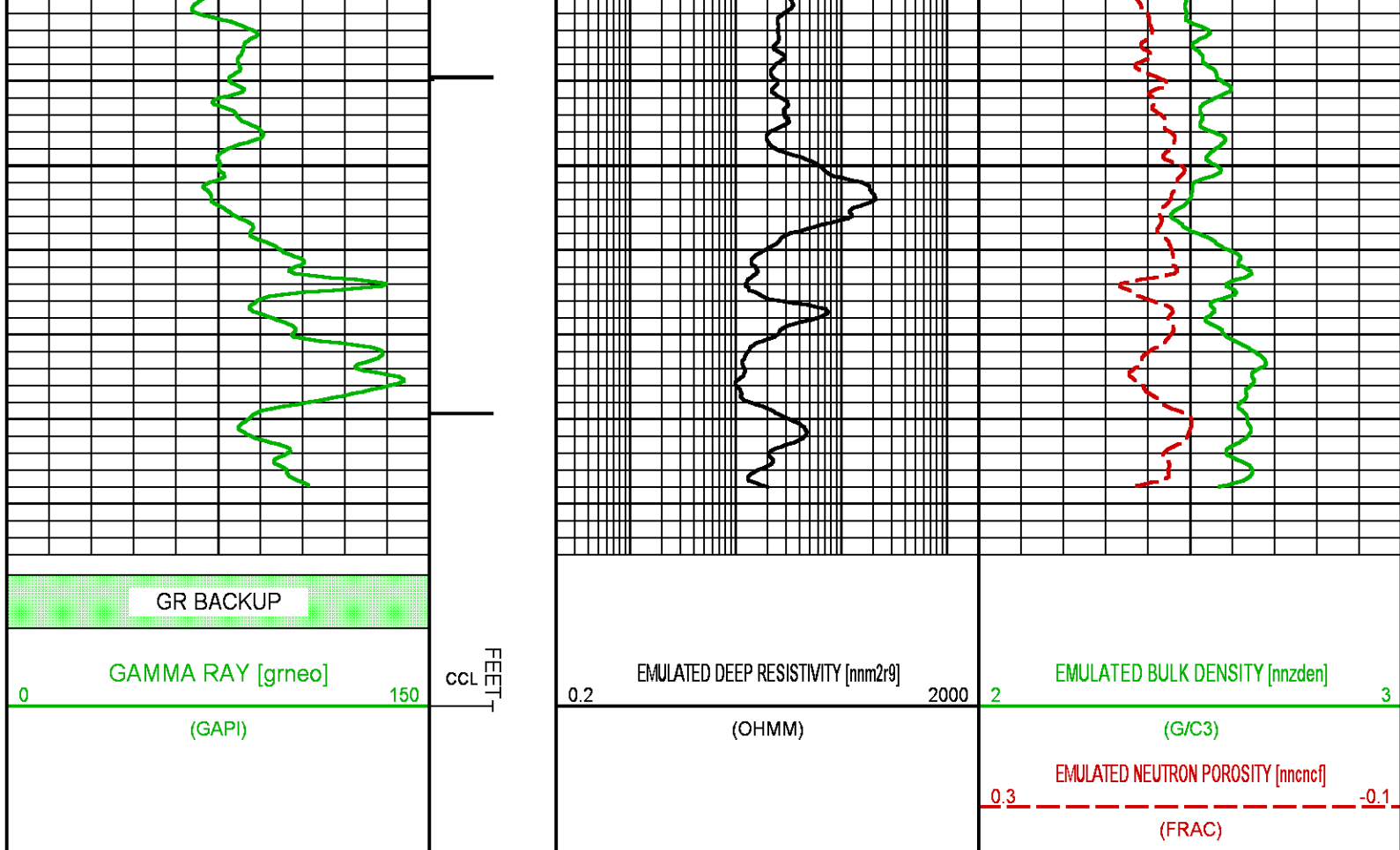












**BAKER
HUGHES**
a GE company



COMPANY
WELL
FIELD
COUNTY

LARAMIE ENERGY II, LLC
NICHOLS 0994-24-02E
VEGA
MESA

STATE **COLORADO**

FILE NO:

API NO:

05-077-10421-0000

LOCATION:

SEE REMARKS

ELEVATIONS:

KB 7161 FT

DF

GL 7137 FT

SEC **24** **TWP** **9S** **RGE** **94W**

DATE **13-MAR-2018**

