

Nichols 0994-24-04E
Mesa County, CO
Q1711623 & RM-171374
Design #2

Company Name: Laramie Energy, LLC
Nichols 0994-24-04E
Mesa County, CO
Rig: H&P #290
Created By: Will Jircik
Date: 12/28/2017

PROJECT DETAILS: Mesa County, CO
Geodetic System: US State Plane 1983
Datum: North American Datum 1983
Ellipsoid: GRS 1980
Zone: Colorado Central Zone
System Datum: Mean Sea Level

T

M

Azimuths to True North
Magnetic North: 9.54°

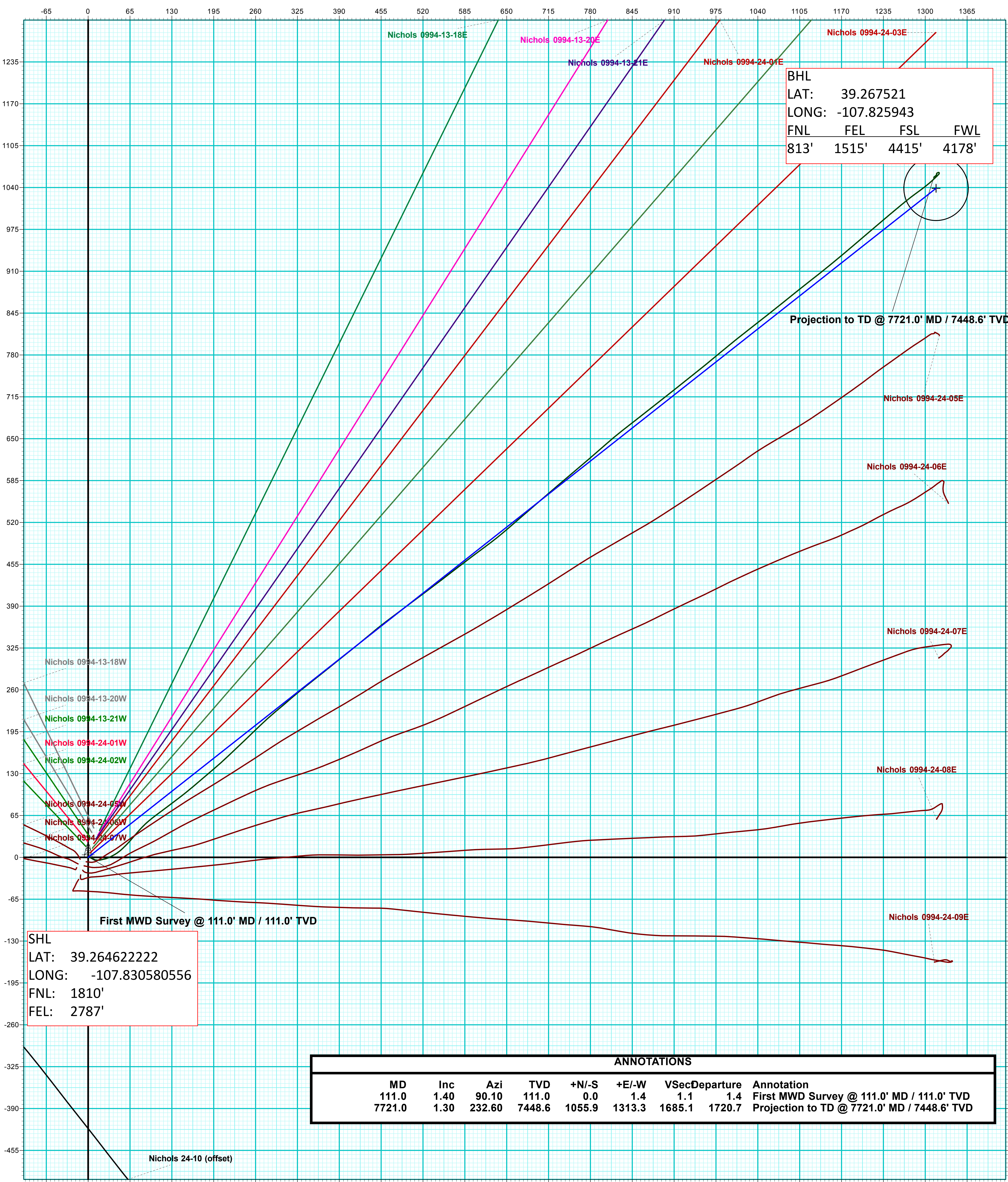
Strength: 51358.2snT
Dip Angle: 65.42°
Date: 12/24/2017
Model: IGRF2015



FORMATION TOP DETAILS		
TVDPath	MDPath	Formation
2449.0	2553.7	G' Sand
4199.0	4426.4	Williams Fork
5599.0	5892.1	TOG
6499.0	6792.1	Cameo
7159.0	7452.1	Base Cameo Coal
7199.0	7492.1	Rollins

DESIGN ANNOTATIONS									
MD	Inc	Azi	TVD	+N/-S	+E/-W	VSect	Departure	Annotation	
494.0	0.00	0.00	494.0	0.0	0.0	0.0	0.0	KOP (Build 3° / 100')	
1189.3	20.86	51.73	1174.0	77.5	98.3	125.2	125.2	EOB @ 20.86° Inc. / 51.73° Azm	
5196.9	20.86	51.73	4919.0	961.3	1218.5	1552.1	1552.1	Drop 3° / 100'	
5892.1	0.00	0.00	5599.0	1038.8	1316.8	1677.2	1677.2	EOD @ Vertical	
7742.1	0.00	0.00	7449.0	1038.8	1316.8	1677.2	1677.2	TD @ 7742.1° MD / 7449.0° TVD	

DESIGN TARGET DETAILS								
Name	TVD	+N/-S	+E/-W	Northing	Easting	Latitude	Longitude	Shape
PBHL - Nichols 0994-24-04E	449.0	1038.8	1316.8	1530740.59	2341562.32	39.267474	-107.825930	Circle (Radius: 50.0)



ANNOTATIONS								
MD	Inc	Azi	TVD	+N/-S	+E/-W	VSec	Departure	Annotation
111.0	1.40	90.10	111.0	0.0	1.4	1.1	1.4	First MWD Survey @ 111.0° MD / 111.0° TVD
7721.0	1.30	232.60	7448.6	1055.9	1313.3	1685.1	1720.7	Projection to TD @ 7721.0° MD / 7448.6° TVD