



Laramie Energy

End of Well Cement Report

Nichols 0994-24-04E 05-077-10420

S:24 T:9S R:94W Mesa CO

Quote #: 04115/04118

I Execution #: 02182/02238



Laramie Energy

Attention: Mr. Aaron Duncan | (303) 339-4913 | aduncan@laramie-energy.com

Laramie Energy | 1401 17th St, Suite 1400 | Denver, CO 80202

Dear Mr. Duncan,

Thank you for the opportunity to provide cementing services on this well. BJ Services strives to achieve complete customer satisfaction. If you have any questions regarding the services or data provided, please contact BJ Services at any time.

Sincerely,

Zen Keith
Field Engineer III | (307) 757-7178 | Zen.Keith@BJServices.com

Field Office 28730 US-6, Rifle, CO 81650
Phone: (970) 632-2412

Sales Office 999 18th St. Suite 1200 Denver, CO 80202
Phone: (281) 408-2361

Cementing Treatment



Start Date	12/25/2017	Well	Nichols 0994-24-04E
End Date	12/25/2017	County	MESA
Client	LARAMIE ENERGY	State/Province	CO
Client Field Rep	Matt Settles	API	05-077-10420
Service Supervisor	Paul Linn III	Formation	-
Field Ticket No.	Surface	Rig	H&P 290
District	Rifle, CO	Type of Job	Surface

WELL GEOMETRY

Type	ID (in)	OD (in)	Wt. (lb/ft)	MD (ft)	TVD (ft)	Excess(%)	Grade	Thread
Previous Casing	15.25	16.00	65.00	60.00	60.00	0.00		
Open Hole	11.00			1,561.00	1,561.00	75.00		
Casing	8.10	8.63	24.00	1,551.00	1,551.00		J-55	ST&C

Shoe Length (ft): 42

HARDWARE

Bottom Plug Used?	Yes	Tool Type	Float Collar
Bottom Plug Provided By	Non BJ	Tool Depth (ft)	1,506.00
Bottom Plug Size	8.625	Max Tubing Pressure - Rated (psi)	-
Top Plug Used?	Yes	Max Tubing Pressure - Operated (psi)	-
Top Plug Provided By	Non BJ	Max Casing Pressure - Rated (psi)	2,950.00
Top Plug Size	8.625	Max Casing Pressure - Operated (psi)	2,360.00
Centralizers Used	Yes	Pipe Movement	None
Centralizers Quantity	20.00	Job Pumped Through	Manifold
Centralizers Type	Bow	Top Connection Thread	8 RND
Landing Collar Depth (ft)	1,506	Top Connection Size	8.625

Cementing Treatment



CIRCULATION PRIOR TO JOB

Well Circulated By	Rig	Solids Present at End of Circulation	No
Circulation Prior to Job	Yes	10 sec SGS	5.00
Circulation Time (min)	30.00	10 min SGS	26.00
Circulation Rate (bpm)	10.00	30 min SGS	59.00
Circulation Volume (bbls)	300.00	Flare Prior to/during the Cement Job	No
Lost Circulation Prior to Cement Job	No	Gas Present	No
Mud Density In (ppg)	9.00	Gas Units	0
Mud Density Out (ppg)	9.10		
PV Mud In	21		
PV Mud Out	21		
YP Mud In	15		
YP Mud Out	15		

TEMPERATURE

Ambient Temperature (°F)	26.00	Slurry Cement Temperature (°F)	78.00
Mix Water Temperature (°F)	80.00	Flow Line Temperature (°F)	-

BJ FLUID DETAILS

Fluid Type	Fluid Name	Density (ppg)	Yield (Cu Ft/sk)	H2O Req. (gals/sk)	Vol (sk)	Vol (Cu Ft)	Vol (bbls)
Spacer / Pre Flush / Flush	Fresh Water	8.3300					40.0000
Lead Slurry	S100-12	12.0000	2.5329	14.89	191	480.0000	85.5000
Tail Slurry	S100-12	12.5000	2.2282	12.62	107	237.0000	42.1000
Displacement Final	Water	8.3300				0.0000	94.5000

Cementing Treatment



Fluid Type	Fluid Name	Component	Concentration	UOM
Lead Slurry	S100-12	CEMENT, ASTM TYPE III	100.00	PCT
Lead Slurry	S100-12	CEMENT EXTENDER, GYPSUM, A-10	5.00	BWOB
Lead Slurry	S100-12	ACCELERATOR, SALT, CHLORIDE, CALCIUM, A-7P, PELLETS	2.00	LBS/SK
Lead Slurry	S100-12	FP-25, Dry Foam Preventer (BJS Only)	0.30	BWOB
Lead Slurry	S100-12	IntegraSeal CELLO	0.13	LBS/SK
Lead Slurry	S100-12	CEMENT EXTENDER, SODIUM METASILICATE, A-2	2.00	LBS/SK
Tail Slurry	S100-12	ACCELERATOR, SALT, CHLORIDE, CALCIUM, A-7P, PELLETS	2.00	LBS/SK
Tail Slurry	S100-12	CEMENT EXTENDER, GYPSUM, A-10	5.00	BWOB
Tail Slurry	S100-12	IntegraSeal CELLO	0.13	LBS/SK
Tail Slurry	S100-12	CEMENT EXTENDER, SODIUM METASILICATE, A-2	2.00	LBS/SK
Tail Slurry	S100-12	CEMENT, ASTM TYPE III	100.00	PCT
Tail Slurry	S100-12	FP-25, Dry Foam Preventer (BJS Only)	0.30	BWOB

TREATMENT SUMMARY

Time	Fluid	Rate (bpm)	Fluid Vol. (bbls)	Pipe Pressure (psi)
12/25/2017 6:46 PM	Fresh Water	3.00	54.00	170.00
12/25/2017 7:07 PM	S100-12	5.00	86.06	320.00
12/25/2017 7:25 PM	S100-12	5.00	42.50	285.00
12/25/2017 7:38 PM	Water	7.00	95.80	390.00

	Min	Max	Avg
Pressure (psi)	23.00	2,012.00	485.00
Rate (bpm)	1.00	7.00	5.00

Cementing Treatment



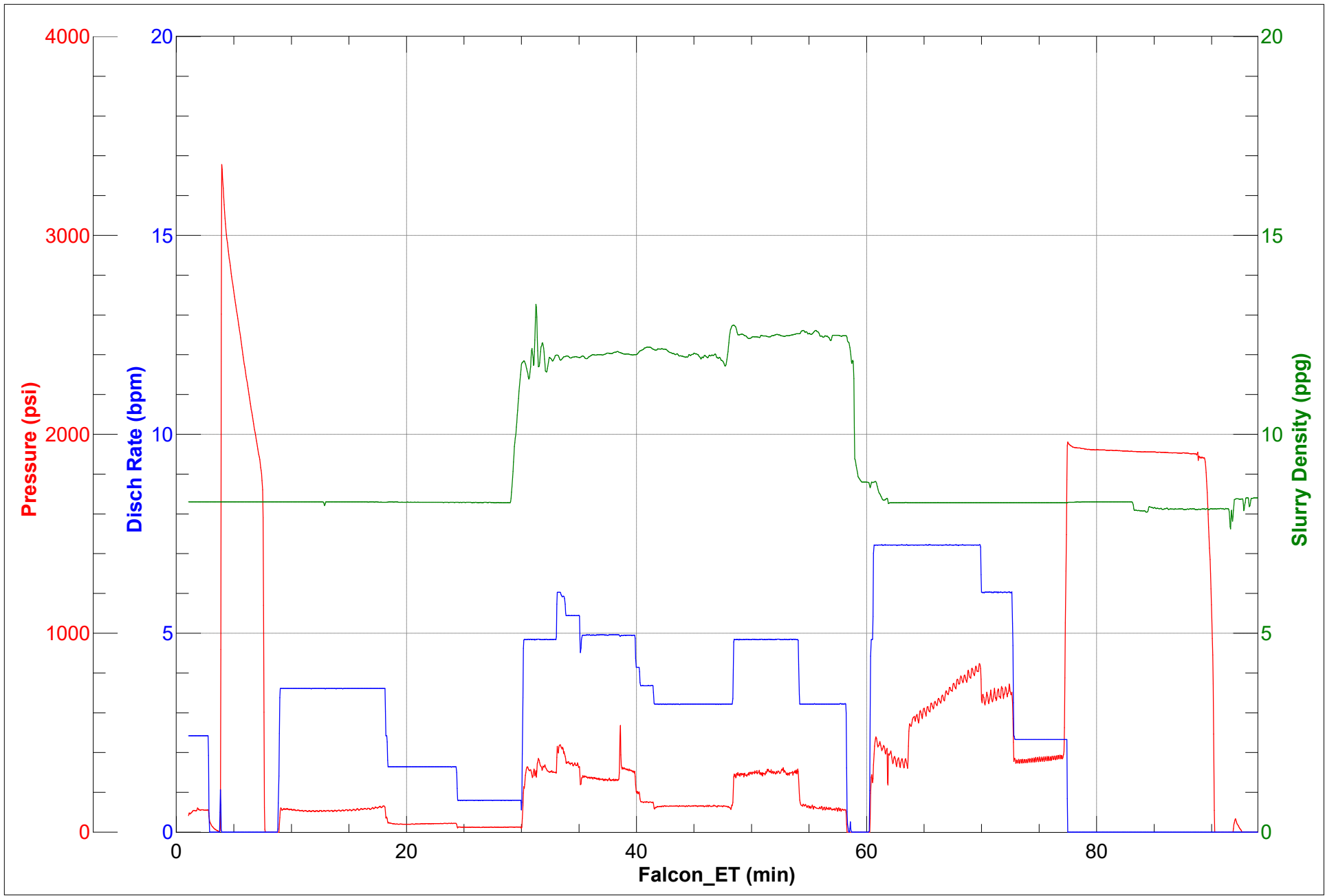
DISPLACEMENT AND END OF JOB SUMMARY

Displaced By	BJ	Amount of Cement Returned/Reversed	30.00
Calculated Displacement Volume (bbls)	95.80	Method Used to Verify Returns	Visual
Actual Displacement Volume (bbls)	95.00	Amount of Spacer to Surface	54.00
Did Float Hold?	Yes	Pressure Left on Casing (psi)	0.00
Bump Plug	Yes	Amount Bled Back After Job	1.00
Bump Plug Pressure (psi)	571.00	Total Volume Pumped (bbls)	268.00
Were Returns Planned at Surface	Yes	Top Out Cement Spotted	No
Cement returns During Job	Partial	Lost Circulation During Cement Job	No

Customer Name LARAMIE District Rifle
 Well Name NICHOLS 24-04E Supervisor ANDREW LINN
 Job Type Surface Engineer GAGE PUTNAM



Seq No.	Start Date	Start Time	Event	Density (lb/gal)	Pump Rate (bpm)	Pump Vol (bbls)	Pipe Pressure (psi)	Comments
1	12/25/2017	10:00	CALL OUT					CREW CALL OUT ON LOCATION TIME OF 17:00
2	12/25/2017	10:00	ALREADY ON LOCATION					CREW WAS ALREADY ON LOCATION
3	12/25/2017	10:00	SITE ASSESSMENT					SITE ASSESSMENT
4	12/25/2017	10:20	SPOT EQUIPMENT					SPOT IN BULK TRUCK
5	12/25/2017	10:45	STEACS					PRE RIG UP SAFETY MEETING WITH ALL BJ SERVICES CEMENT CREW
6	12/25/2017	11:00	RIG UP					RIG UP ALL GROUND EQUIPMENT
7	12/25/2017	18:05	SAFETY MEETING					PRE JOB SAFETY MEETING WITH RIG CREW AND ALL BJ SERVICES CEMENT CREW.
8	12/25/2017	18:22	RIG UP					LOAD PLUGS IN PLUG CONTAINER, STAB PLUG CONTAINER, HOOK LINES TO PLUG CONTAINER
9	12/25/2017	18:38	FILL LINE	8.33	2	5	113	FILL LINES WITH 5 BBLs. FRESH WATER
10	12/25/2017	18:40	DROP PLUG					DROP BOTTOM PLUG
11	12/25/2017	18:41	PRESSURE TEST				3322	PRESSURE TEST TO 3701 PSI.
12	12/25/2017	18:46	SPACER	8.33	3.5	6	170	FRESH WATER SPACER
13	12/25/2017	19:05	SPACER	8.33	2	50	25	FRESH WATER SPACER
14	12/25/2017	19:07	SPACER	8.33	1	53	23	FRESH WATER SPACER
15	12/25/2017	19:07	LEAD CEMENT	12	5	5	320	LEAD CEMENT 12 PPG. 191 SKS. 2.53 CUFT./SK. 14.89 GAL./SK. FOR A TOTAL OF 86.06 BBLs. OF LEAD REQUIRING 67.71 BBLs. OF FRESH WATER. WEIGHT VERIFIED WITH MUD SCALES. CALCULATED TOP OF LEAD IS 0 FT. CALCULATED HEIGHT OF LEAD IS 671.07 FT.
16	12/25/2017	19:16	LEAD CEMENT	12	4	48	301	PUMPED LEAD CEMENT
17	12/25/2017	19:17	LEAD CEMENT	12	4	50	222	PUMPED LEAD CEMENT
18	12/25/2017	19:25	LEAD CEMENT	12	3	77.5	122	FINISHED PUMPING LEAD CEMENT WITH 77.5 BBLs. AWAY
19	12/25/2017	19:25	TAIL CEMENT	12.5	5	5	285	TAIL CEMENT 12.5 PPG. 107 SKS. 2.23 CUFT./SK. 12.62 GAL./SK. FOR A TOTAL OF 45.5 BBLs. OF TAIL REQUIRING 32.15 BBLs. OF FRESH WATER. WEIGHT VERIFIED WITH MUD SCALES. CALCULATED TOP OF TAIL IS 671.07 FT. CALCULATED HEIGHT OF TAIL IS 879.03 FT.
20	12/25/2017	19:32	TAIL CEMENT	12.5	4	30	330	PUMPED TAIL CEMENT
21	12/25/2017	19:36	TAIL CEMENT	12.5	3	42	121	FINISHED PUMPING TAIL CEMENT WITH 42 BBLs. AWAY
22	12/25/2017	19:37	SHUT DOWN					SHUT DOWN
23	12/25/2017	19:38	DROP PLUG					DROP TOP PLUG. VERIFIED BY DRILLER
24	12/25/2017	19:40	DISPLACEMENT	8.33	7	10	285	FRESH WATER DISPLACEMENT WITH FIRST 10 BBLs. THROUGH MIX TUB
25	12/25/2017	19:45	DISPLACEMENT	8.33	7	50	740	FRESH WATER DISPLACEMENT
26	12/25/2017	19:48	DISPLACEMENT	8.33	6	70	690	FRESH WATER DISPLACEMENT
27	12/25/2017	19:50	DISPLACEMENT	8.33	6	85	780	FRESH WATER DISPLACEMENT
28	12/25/2017	19:47	CEMENT TO SURFACE					30 BBLs. OF CEMENT TO SURFACE VERIFIED BY COMPANY MAN
29	12/25/2017	19:50	DISPLACEMENT	8.33	2	86	383	FRESH WATER DISPLACEMENT
30	12/25/2017	19:55	DISPLACEMENT	8.33	2	95	571	FRESH WATER DISPLACEMENT
31	12/25/2017	19:55	LAND PLUG				2012	LANDED PLUG
32	12/25/2017	19:55	CASING TEST					10 MIN CASING TEST AT 2012 PSI.
33	12/25/2017	20:06	CHECK FLOATS					CHECK FLOATS FLOATS HELD 1 BBL. BACK
34	12/25/2017	20:10	SAFETY MEETING					PRE RIG DOWN SAFETY MEETING WITH RIG CREW
35	12/25/2017	20:20	RIG DOWN					RIG DOWN THE RIG FLOOR
36	12/25/2017	20:20	WASH PUMPS AND LINES					WASH PUMPS AND LINES INTO CELLAR
37	12/25/2017	20:35	SAFETY MEETING					PRE RIG DOWN SAFETY MEETING WITH ALL BJ SERVICES CEMENT CREW
38	12/25/2017	20:59	RIG DOWN					RIGGED DOWN ALL EQUIPMENT
39	12/25/2017	21:20	AAR					AFTER ACTION REVIEW
40	12/25/2017	21:30	STEACS					PRE CONVOY SAFETY MEETING
41	12/25/2017	21:45	DEPART LOCATION					DEPART FROM LOCATION FOR RIFLE YARD. THANK YOU FOR USING BJ SERVICES, ANDREW LINN AND CREW.



Cementing Treatment



Start Date	12/28/2017	Well	Nichols 0994-24-04E
End Date	2/28/2018	County	MESA
Client	LARAMIE ENERGY	State/Province	CO
Client Field Rep		API	05-077-10420
Service Supervisor		Formation	
Field Ticket No.	Production	Rig	H&P 290
District	Rifle, CO	Type of Job	Long String

WELL GEOMETRY

Type	ID (in)	OD (in)	Wt. (lb/ft)	MD (ft)	Excess(%)	Grade	Thread
Previous Casing	8.10	8.63	24.00	1,524.00		J-55	ST&C
Open Hole	8.88			7,721.00	10.00		
Casing	4.00	4.50	11.60	7,711.00		L-80	LT&C

Shoe Length (ft): 80

HARDWARE

Bottom Plug Used?	Yes	Tool Type	Float Collar
Bottom Plug Provided By	Non BJ	Tool Depth (ft)	7,633.00
Bottom Plug Size	4.500	Max Tubing Pressure - Rated (psi)	
Top Plug Used?	Yes	Max Tubing Pressure - Operated (psi)	
Top Plug Provided By	Non BJ	Max Casing Pressure - Rated (psi)	7,780.00
Top Plug Size	4.500	Max Casing Pressure - Operated (psi)	6,224.00
Centralizers Used	Yes	Pipe Movement	None
Centralizers Quantity	144.00	Job Pumped Through	Manifold
Centralizers Type	Bow	Top Connection Thread	8 RND.
Landing Collar Depth (ft)	7,662	Top Connection Size	4.5

Cementing Treatment



CIRCULATION PRIOR TO JOB

Well Circulated By	Rig	Solids Present at End of Circulation	No
Circulation Prior to Job	Yes	10 sec SGS	6.00
Circulation Time (min)	60.00	10 min SGS	42.00
Circulation Rate (bpm)	10.00	30 min SGS	69.00
Circulation Volume (bbls)	600.00	Flare Prior to/during the Cement Job	No
Lost Circulation Prior to Cement Job	No	Gas Present	No
Mud Density In (ppg)	9.20	Gas Units	0
Mud Density Out (ppg)	9.40		
PV Mud In	27		
PV Mud Out	27		
YP Mud In	25		
YP Mud Out	25		

TEMPERATURE

Ambient Temperature (°F)	18.00	Slurry Cement Temperature (°F)	65.00
Mix Water Temperature (°F)	67.00	Flow Line Temperature (°F)	

BJ FLUID DETAILS

Fluid Type	Fluid Name	Density (ppg)	Yield (Cu Ft/sk)	H2O Req. (gals/sk)	Vol (sk)	Vol (Cu Ft)	Vol (bbls)
Spacer / Pre Flush / Flush	CD Spacer	11.0000					60.0000
Lead Slurry	P100-X2	12.7000	1.9775	11.11	804	1,587.0000	282.6000
Tail Slurry	P70-X1	13.5000	1.8511	9.33	393	727.0000	129.4000
Displacement Final	Freshwater with Clay Stabilizer	8.3300				0.0000	119.1000

Cementing Treatment



Fluid Type	Fluid Name	Component	Concentration	UOM
Spacer / Pre Flush / Flush	CD Spacer	SAND, S-8, Silica Flour, 200 Mesh	179.97	PPB
Spacer / Pre Flush / Flush	CD Spacer	GELLANT WATER, GW-86	0.80	PPB
Spacer / Pre Flush / Flush	CD Spacer	R-6 LOW TEMP RETARDER 50 LB BAG BJS	1.40	PPB
Spacer / Pre Flush / Flush	CD Spacer	Spacer Surfactant, SS-247, (BJS Only)	0.80	GPB
Lead Slurry	P100-X2	R-6 LOW TEMP RETARDER 50 LB BAG BJS	0.50	BWOB
Lead Slurry	P100-X2	CEMENT, ASTM TYPE III	100.00	PCT
Lead Slurry	P100-X2	DISPERSANT, CD-31	0.10	BWOB
Lead Slurry	P100-X2	GELLANT WATER, GW-86	0.10	BWOB
Lead Slurry	P100-X2	BONDING AGENT, BA-60	0.30	BWOB
Lead Slurry	P100-X2	FP-25, Dry Foam Preventer (BJS Only)	0.30	BWOB
Tail Slurry	P70-X1	Flyash (Rockies)	20.00	PCT
Tail Slurry	P70-X1	SAND, S-8, Silica Flour, 200 Mesh	25.00	BWOB
Tail Slurry	P70-X1	CEMENT, CLASS G	70.00	PCT
Tail Slurry	P70-X1	R-6 LOW TEMP RETARDER 50 LB BAG BJS	0.20	BWOB
Tail Slurry	P70-X1	FLUID LOSS, FL-24, (BJS Only)	0.40	BWOB
Tail Slurry	P70-X1	EXTENDER, BENTONITE	6.00	BWOB
Tail Slurry	P70-X1	BONDING AGENT, BA-60	0.20	BWOB
Tail Slurry	P70-X1	BONDING AGENT, BA-90	10.00	PCT
Tail Slurry	P70-X1	FP-25, Dry Foam Preventer (BJS Only)	0.30	BWOB
Displacement Final	Freshwater with Clay Stabilizer	CLAY STABILIZATION, ResCare CS	0.08	GPB

Cementing Treatment



TREATMENT SUMMARY

Time	Fluid	Rate (bpm)	Fluid Vol. (bbls)	Pipe Pressure (psi)	Annulus Pressure (psi)	Comments
12/29/2017 12:53 AM	CD Spacer	6.00	60.00	331.00		
12/29/2017 1:03 AM	P100-X2	6.00	284.58	324.00		
12/29/2017 1:58 AM	P70-X1	6.00	129.40	430.00		
12/29/2017 2:36 AM	Freshwater with Clay Stabilizer	10.00	119.10	978.00		

	Min	Max	Avg
Pressure (psi)	175.00	3,300.00	411.00
Rate (bpm)	2.00	10.00	6.00

DISPLACEMENT AND END OF JOB SUMMARY

Displaced By	BJ	Amount of Cement Returned/Reversed	0.00
Calculated Displacement Volume (bbls)	118.34	Method Used to Verify Returns	Visual
Actual Displacement Volume (bbls)	118.00	Amount of Spacer to Surface	45.00
Did Float Hold?	Yes	Pressure Left on Casing (psi)	0.00
Bump Plug	Yes	Amount Bled Back After Job	1.50
Bump Plug Pressure (psi)	2,105.00	Total Volume Pumped (bbls)	605.00
Were Returns Planned at Surface	Yes	Top Out Cement Spotted	No
Cement returns During Job	Full	Lost Circulation During Cement Job	No

Customer Name LARAMIE
 Well Name NICHOLS 24-04E
 Job Type Long String

District Rifle
 Supervisor ANDREW LINN
 Engineer ZEN K.



Seq No.	Start Date	Start Time	Event	Density (lb/gal)	Pump Rate (bpm)	Pump Vol (bbls)	Pipe Pressure (psi)	Comments
1	12/28/2017	17:00	CALL OUT					CALL OUT. ON LOCATION TIME OF 23:00
2	12/28/2017	18:40	STEACS					PRE CONVOY SAFETY MEETING
3	12/28/2017	19:00	DEPART RIFLE YARD					DEPART FROM RIFLE YARD FOR H&P 290
4	12/28/2017	21:30	ARRIVE ON LOCATION					ARRIVE ON LOCATION. RIG WAS RUNNING CASING
5	12/28/2017	21:35	SITE ASSESSMENT					CREW DID A SITE ASSESSMENT
6	12/28/2017	21:45	SPOT EQUIPMENT					SPOTTED IN EQUIPMENT
7	12/28/2017	22:00	STEACS					PRE RIG UP SAFETY MEETING WITH ALL BJ CEMENT CREW
8	12/28/2017	22:30	RIG UP					RIG UP ALL GROUND EQUIPMENT
9	12/29/2017	0:05	SAFETY MEETING					PRE JOB SAFETY MEETING WITH RIG CREW AND ALL BJ CEMENT CREW
10	12/29/2017	0:20	RIG UP					LOAD BOTH PLUGS IN PLUG CONTAINER, STAB PLUG CONTAINER, HOOK LINES TO PLUG CONTAINER.
11	12/29/2017	0:36	FILL LINES	8.33	2	5	175	FILL LINES WITH 5 BBLS. OF FRESH WATER
12	12/29/2017	0:41	PRESSURE TEST				7100	PRESSURE TEST TO 7100 PSI.
13	12/29/2017	0:49	DROP PLUG					DROP BOTTOM PLUG
14	12/29/2017	0:53	WEIGHTED SPACER	11	6	10	331	11 PPG. WEIGHTED SPACER
15	12/29/2017	0:59	WEIGHTED SPACER	11	6	50	212	11 PPG. WEIGHTED SPACER
16	12/29/2017	1:03	WEIGHTED SPACER	11	4	66	137	FINISHED PUMPING 11 PPG. WEIGHTED SPACER ITH 66 BBLS. AWAY.
17	12/29/2017	1:06	LEAD CEMENT	12.7	6	5	324	LEAD CEMENT 12.7 PPG. 807 SKS. 1.98 CUFT./SK. 11.11 GAL./SK. FOR A TOTAL OF 284.58 BBLS OF LEAD CEMENT, REQUIRING 213.47 BBLS. OF WATER. WEIGHT VERIFIED WITH MUD SCALE.
18	12/29/2017	1:12	LEAD CEMENT	12.7	6	50	346	PUMPED LEAD CEMENT
19	12/29/2017	1:21	LEAD CEMENT	12.7	6	100	333	PUMPED LEAD CEMENT
20	12/29/2017	1:29	LEAD CEMENT	12.7	6	150	338	PUMPED LEAD CEMENT
21	12/29/2017	1:37	LEAD CEMENT	12.7	6	200	326	PUMPED LEAD CEMENT
22	12/29/2017	1:46	LEAD CEMENT	12.7	6	250	331	PUMPED LEAD CEMENT
23	12/29/2017	1:48	LEAD CEMENT	12.7	4.5	260	191	PUMPED LEAD CEMENT
24	12/29/2017	17:35	LEAD CEMENT	12.7	3.5	270	106	PUMPED LEAD CEMENT
25	12/29/2017	1:56	LEAD CEMENT	12.7	3	287	187	FINISHED PUMPING LEAD CEMENT WITH 287 BBLS. AWAY.
26	12/29/2017	1:58	TAIL CEMENT	13.5	6	10	430	TAIL CEMENT 13.5 PPG. 393 SKS. 1.85 CUFT./SK. 9.33 GAL./SK. FOR A TOTAL OF 129.41 BBLS OF TAIL CEMENT, REQUIRING 87.3 BBLS. OF WATER. WEIGHT VERIFIED WITH MUD SCALE. CALCULATED TOP
27	12/29/2017	2:05	TAIL CEMENT	13.5	5	50	375	PUMPED TAIL CEMENT

Customer Name LARAMIE
 Well Name NICHOLS 24-04E
 Job Type Long String

District Rifle
 Supervisor ANDREW LINN
 Engineer ZEN K.



Seq No.	Start Date	Start Time	Event	Density (lb/gal)	Pump Rate (bpm)	Pump Vol (bbls)	Pipe Pressure (psi)	Comments
28	12/29/2017	2:09	TAIL CEMENT	13.5	3.5	70	268	PUMPED TAIL CEMENT
29	12/29/2017	2:12	TAIL CEMENT	13.5	5	85	411	PUMPED TAIL CEMENT
30	12/29/2017	2:15	TAIL CEMENT	13.5	5	100	429	PUMPED TAIL CEMENT
31	12/29/2017	2:19	TAIL CEMENT	13.5	4	120	266	PUMPED TAIL CEMENT
32	12/29/2017	2:22	TAIL CEMENT	13.5	4	129	222	FINISHED PUMPING TAIL CEMENT WITH 129 BBLs. AWAY.
33	12/29/2017	2:22	SHUT DOWN					SHUT DOWN
34	12/29/2017	2:24	WASH PUMPS AND LINES					WASH PUMPS AND LINES TO CELLAR
35	12/29/2017	2:34	DROP PLUG					DROP TOP PLUG VERIFIED BY DRILLER
36	12/29/2017	2:37	DISPLACEMENT	8.33	10	10	978	FRESH WATER DISPLACEMENT WITH 10 GALS. OF RESCARE
37	12/29/2017	2:40	DISPLACEMENT	8.33	8	40	1272	FRESH WATER DISPLACEMENT WITH 10 GALS. OF RESCARE
38	12/29/2017	2:42	DISPLACEMENT	8.33	8	50	1559	FRESH WATER DISPLACEMENT WITH 10 GALS. OF RESCARE
39	12/29/2017	2:46	SPACER TO SURFACE					45 BBLs. OF WEIGHTED SPACER TO SURFACE
40	12/29/2017	2:49	DISPLACEMENT	8.33	8	100	2237	FRESH WATER DISPLACEMENT WITH 10 GALS. OF RESCARE
41	12/29/2017	2:49	DISPLACEMENT	8.33	4	108	1870	FRESH WATER DISPLACEMENT WITH 10 GALS. OF RESCARE
42	12/29/2017	2:52	DISPLACEMENT	8.33	4	118	2105	FRESH WATER DISPLACEMENT WITH 10 GALS. OF RESCARE
43	12/29/2017	2:52	LAND PLUG				3300	LANDED THE PLUG FINAL CIRCULATING PRESSURE WAS 2105 PSI. TOOK TO 3300 PSI.
44	12/29/2017	2:52	CASING TEST					10 MIN CASING TEST AT 3300 PSI.
45	12/29/2017	3:05	CHECK FLOATS					CHECK FLOATS, FLOATS HELD 1 1/2 BBLs. BACK.
46	12/29/2017	3:10	SAFETY MEETING					PRE RIG DOWN SAFETY MEETING WITH RIG CREW
47	12/29/2017	3:20	RIG DOWN					RIG DOWN RIG FLOOR
48	12/29/2017	3:20	WASH PUMPS AND LINES					WASH PUMPS AND LINES TO CELLAR
49	12/29/2017	3:32	SAFETY MEETING					PRE RIG DOWN SAFETY MEETING WITH ALL BJ SERVICES CEMENT CREW
50	12/29/2017	3:40	RIG DOWN					RIG DOWN SOME IRON AND ALL BULK EQUIPMENT. SPOTTED PUMP OUT OF THE WAY.
51	12/29/2017	4:00	AAR					AFTER ACTION REVIEW
52	12/29/2017	4:10	DIDN'T DEPART FROM LOCATION					CREW STAYED ON LOCATION FOR SURFACE JOB. THANK YOU FOR USING BJ SERVICES, ANDREW LINN AND CREW.

