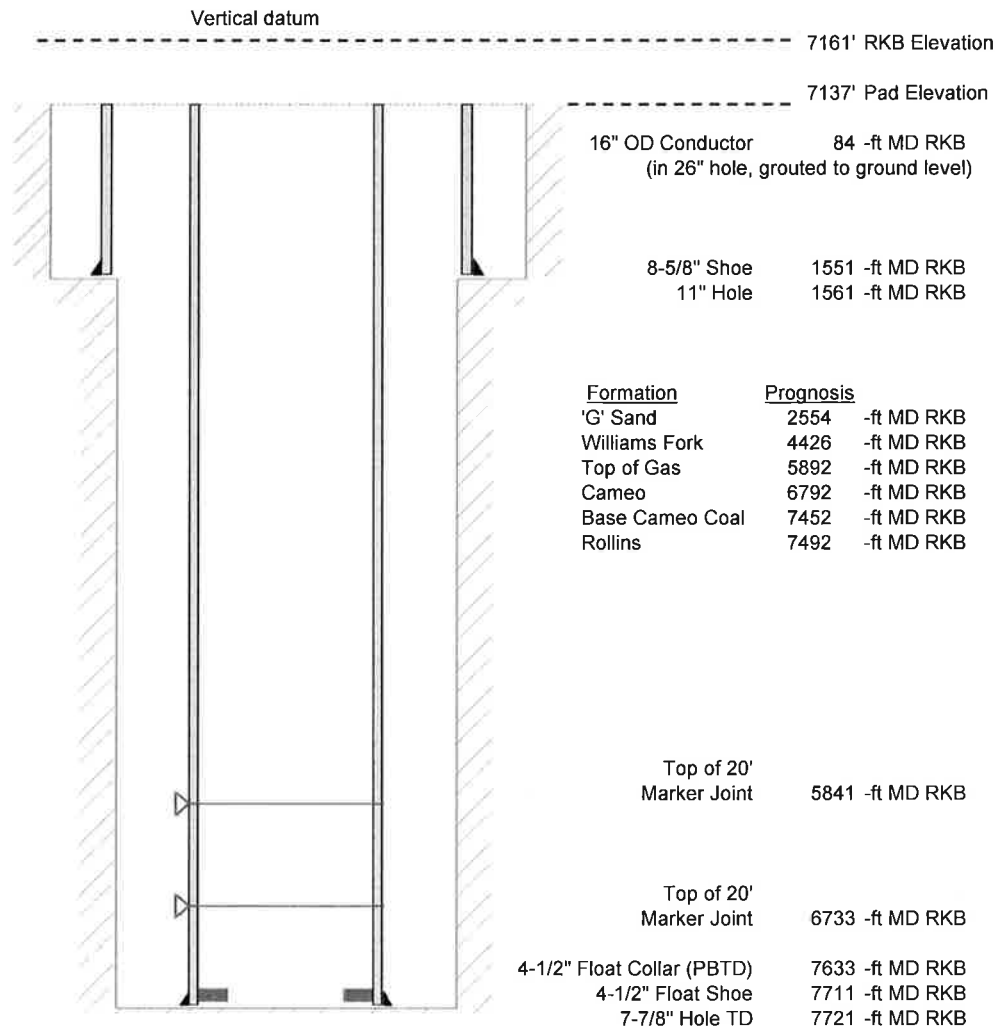


Laramie Energy, LLC
 Nichols 0994-24-04E
 Slot A-7
 H&P 290 (24-ft KB)

API # : 077-10420-00
 SW/4 NE/4 S24/T9S/R94W/6th PM
 Mesa County, CO
 Date of diagram : 12/29/2017



Cementing details

| 8-5/8" 24# J55 STC Surface Csg | Lead | Tail |
|--------------------------------|------|------|
| Density (ppg) | 12.0 | 12.5 |
| Volume (sx) | 168 | 120 |
| Yield (cf/sx) | 2.52 | 2.22 |
| Top (ft RKB) | 24 | 1024 |
| Bottom (ft RKB) | 1024 | 1551 |
| Returns (full or partial) | Full | Full |

| 4-1/2" 11.6# L-80 LTC Prod Csg | Lead | Tail |
|--------------------------------|------|------|
| Density (ppg) | 12.7 | 13.5 |
| Volume (sx) | 804 | 393 |
| Yield (cf/sx) | 1.97 | 1.90 |
| Est Top (ft RKB) | 1026 | 5692 |
| Est Bottom (ft RKB) | 5559 | 7711 |
| Returns (full or partial) | full | full |

| Displacement |
|--------------|
| 8.3 ppg |
| 118 bbls |

Other Remarks : Surface-30 bbls cement to surface Production-40
 bbls spacer to surface