

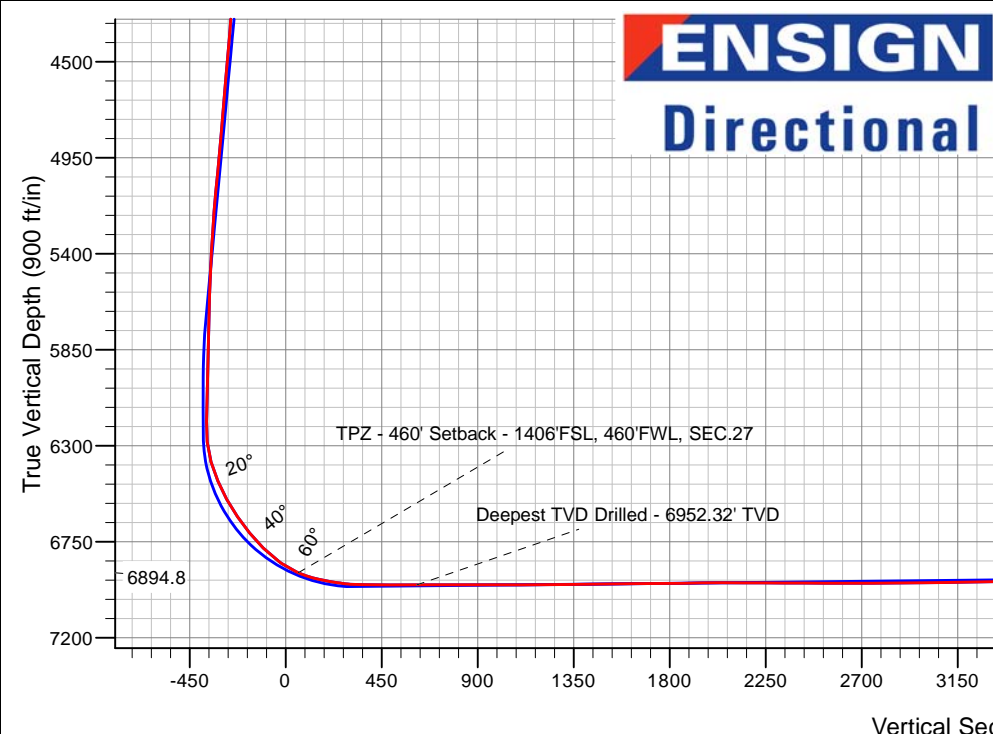
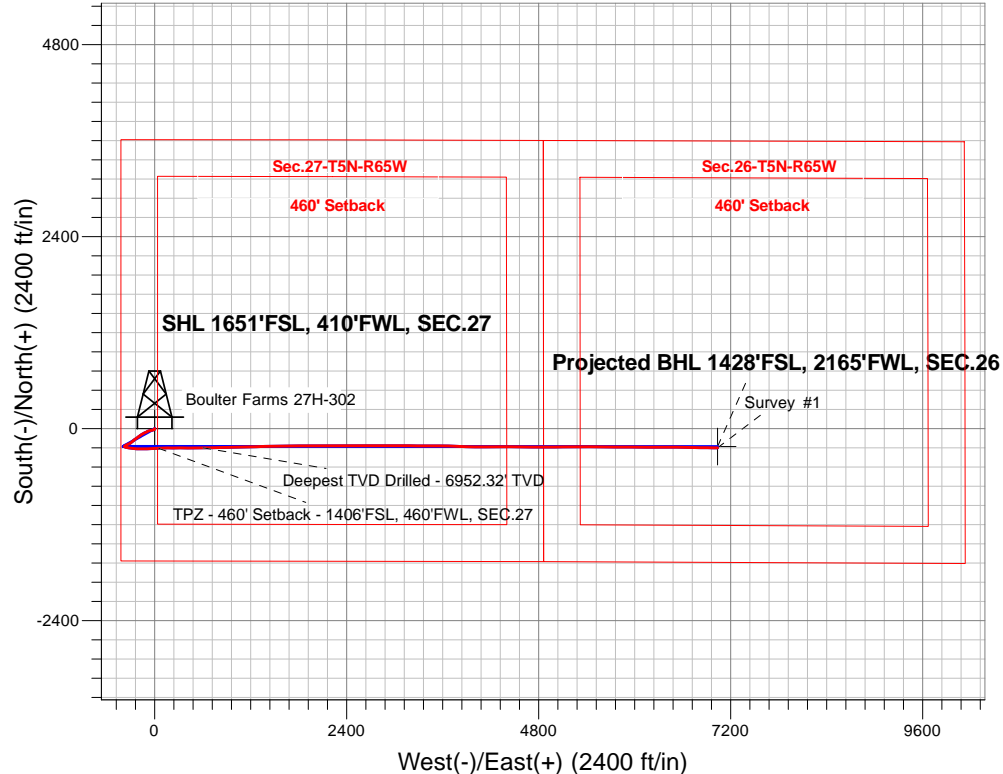
# PDC Energy Inc. DJ Basin

Well Name: **Boulter Farms 27H-302**

Surface Location: Boulter Farms 5N65W27H Pad Sec.27-T5N-R65W  
 North American Datum 1983 , US State Plane 1983, Colorado Northern Zone  
 Ground Elevation: 4657.0  
 +N/-S+E/-W Northing Easting Longitude Slot  
 0.0 0.0 1377872.7 13234784.24 40.367600 -104.657390  
 Ensign Rig #152 - RKB - 23'WELL @ 4680.0ft (Ensign Rig #152 - RKB - 23')

## FINAL SURVEY

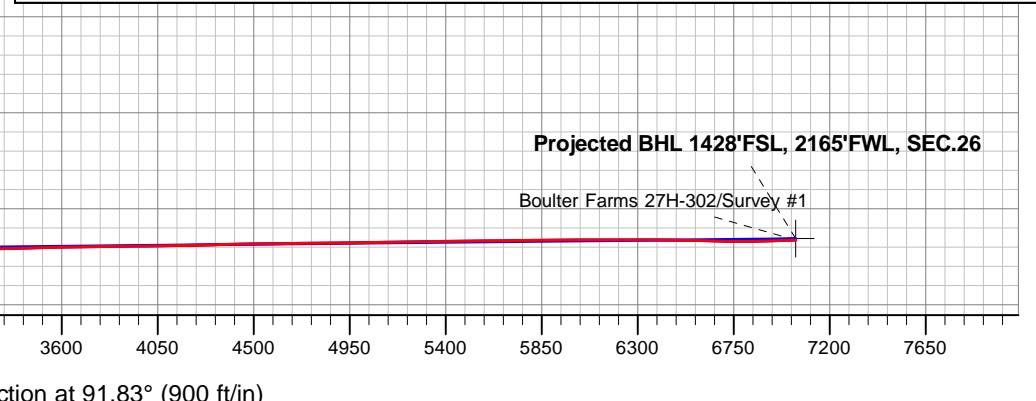
**Projected Bottom Hole Location**  
**14,075'MD 6897'TVD 241'S & 7037'E of SHL**  
**91.6 degree Incl @ 90.90 degree AZM**



Boulter Farms 5N65W27H Pad Sec.27-T5N-R65W  
 Boulter Farms 27H-302  
 Boulter Farms 27H-302 Wellbore #1  
 9:58, January 15 2018

ANNOTATIONS		
TVD	MD	Annotation
6894.8	7079.7	TPZ - 460' Setback - 1406'FSL, 460'FWL, SEC.27
6952.3	7643.0	Deepest TVD Drilled - 6952.32' TVD

LEGEND	
	Boulter Farms 27H-302, Boulter Farms 27H-302 Wellbore #1, Plan #2 (1-08-18) V0
	Boulter Farms 27H-302 Wellbore #1
	Survey #1





## **PDC Energy Inc. DJ Basin**

**SEC.27-T5N-R65W**

**Boulter Farms 5N65W27H Pad Sec.27-T5N-R65W**

**Boulter Farms 27H-302**

**Boulter Farms 27H-302 Wellbore #1**

**Survey: Survey #1**

## **Standard Survey Report**

**15 January, 2018**



<b>Company:</b>	PDC Energy Inc. DJ Basin	<b>Local Co-ordinate Reference:</b>	Well Boulter Farms 27H-302
<b>Project:</b>	SEC.27-T5N-R65W	<b>TVD Reference:</b>	WELL @ 4680.0ft (Ensign Rig #152 - RKB - 23')
<b>Site:</b>	Boulter Farms 5N65W27H Pad Sec.27-T5N-R65W	<b>MD Reference:</b>	WELL @ 4680.0ft (Ensign Rig #152 - RKB - 23')
<b>Well:</b>	Boulter Farms 27H-302	<b>North Reference:</b>	True
<b>Wellbore:</b>	Boulter Farms 27H-302 Wellbore #1	<b>Survey Calculation Method:</b>	Minimum Curvature
<b>Design:</b>	Boulter Farms 27H-302 Wellbore #1	<b>Database:</b>	US_EDM

<b>Project</b>	SEC.27-T5N-R65W, Weld County, Colorado		
<b>Map System:</b>	US State Plane 1983	<b>System Datum:</b>	Mean Sea Level
<b>Geo Datum:</b>	North American Datum 1983		Using Well Reference Point
<b>Map Zone:</b>	Colorado Northern Zone		Using geodetic scale factor

<b>Site</b>	Boulter Farms 5N65W27H Pad Sec.27-T5N-R65W				
<b>Site Position:</b>		<b>Northing:</b>	1,377,949.21 usft	<b>Latitude:</b>	40.367810
<b>From:</b>	Lat/Long	<b>Easting:</b>	3,234,783.51 usft	<b>Longitude:</b>	-104.657390
<b>Position Uncertainty:</b>	0.0 ft	<b>Slot Radius:</b>	13-3/16 "	<b>Grid Convergence:</b>	0.54 °

<b>Well</b>	Boulter Farms 27H-302					
<b>Well Position</b>	<b>+N/-S</b>	0.0 ft	<b>Northing:</b>	1,377,872.71 usft	<b>Latitude:</b>	40.367600
	<b>+E/-W</b>	0.0 ft	<b>Easting:</b>	3,234,784.24 usft	<b>Longitude:</b>	-104.657390
<b>Position Uncertainty</b>		0.0 ft	<b>Wellhead Elevation:</b>	0.0 ft	<b>Ground Level:</b>	4,657.0 ft

<b>Wellbore</b>	Boulter Farms 27H-302 Wellbore #1				
<b>Magnetics</b>	<b>Model Name</b>	<b>Sample Date</b>	<b>Declination (°)</b>	<b>Dip Angle (°)</b>	<b>Field Strength (nT)</b>
	IGRF2010	1/8/2018	7.92	66.81	52,435

<b>Design</b>	Boulter Farms 27H-302 Wellbore #1				
<b>Audit Notes:</b>					
<b>Version:</b>	1.0	<b>Phase:</b>	ACTUAL	<b>Tie On Depth:</b>	0.0
<b>Vertical Section:</b>		<b>Depth From (TVD) (ft)</b>	<b>+N/-S (ft)</b>	<b>+E/-W (ft)</b>	<b>Direction (°)</b>
		0.0	0.0	0.0	91.83

<b>Survey Program</b>	<b>Date</b>	1/15/2018			
<b>From (ft)</b>	<b>To (ft)</b>	<b>Survey (Wellbore)</b>	<b>Tool Name</b>	<b>Description</b>	
154.0	14,075.0	Survey #1 (Boulter Farms 27H-302 Wellbo	MWD	MWD - Standard	

Measured Depth (ft)	Inclination (°)	Azimuth (°)	Vertical Depth (ft)	+N/-S (ft)	+E/-W (ft)	Vertical Section (ft)	Dogleg Rate (°/100usft)	Build Rate (°/100usft)	Turn Rate (°/100usft)	
0.0	0.00	0.00	0.0	0.0	0.0	0.0	0.00	0.00	0.00	
1.0	0.00	215.50	1.0	0.0	0.0	0.0	0.26	0.26	0.00	
<b>SHL 1651'FSL, 410'FWL, SEC.27</b>										
154.0	0.40	215.50	154.0	-0.4	-0.3	-0.3	0.26	0.26	0.00	
250.0	0.30	199.90	250.0	-0.9	-0.6	-0.6	0.14	-0.10	-16.25	
441.0	0.40	189.20	441.0	-2.1	-0.9	-0.8	0.06	0.05	-5.60	
537.0	0.40	130.60	537.0	-2.6	-0.7	-0.6	0.41	0.00	-61.04	
633.0	0.30	169.30	633.0	-3.1	-0.4	-0.3	0.26	-0.10	40.31	
728.0	0.20	218.30	728.0	-3.5	-0.4	-0.3	0.24	-0.11	51.58	
824.0	0.10	159.60	824.0	-3.7	-0.5	-0.4	0.18	-0.10	-61.15	

<b>Company:</b>	PDC Energy Inc. DJ Basin	<b>Local Co-ordinate Reference:</b>	Well Boulter Farms 27H-302
<b>Project:</b>	SEC.27-T5N-R65W	<b>TVD Reference:</b>	WELL @ 4680.0ft (Ensign Rig #152 - RKB - 23')
<b>Site:</b>	Boulter Farms 5N65W27H Pad Sec.27-T5N-R65W	<b>MD Reference:</b>	WELL @ 4680.0ft (Ensign Rig #152 - RKB - 23')
<b>Well:</b>	Boulter Farms 27H-302	<b>North Reference:</b>	True
<b>Wellbore:</b>	Boulter Farms 27H-302 Wellbore #1	<b>Survey Calculation Method:</b>	Minimum Curvature
<b>Design:</b>	Boulter Farms 27H-302 Wellbore #1	<b>Database:</b>	US_EDM

Survey										
Measured Depth (ft)	Inclination (°)	Azimuth (°)	Vertical Depth (ft)	+N/-S (ft)	+E/-W (ft)	Vertical Section (ft)	Dogleg Rate (°/100usft)	Build Rate (°/100usft)	Turn Rate (°/100usft)	
920.0	0.20	244.20	920.0	-3.8	-0.6	-0.5	0.22	0.10	88.13	
1,015.0	0.20	251.90	1,015.0	-3.9	-0.9	-0.8	0.03	0.00	8.11	
1,111.0	0.30	208.30	1,111.0	-4.2	-1.2	-1.1	0.22	0.10	-45.42	
1,207.0	0.40	209.20	1,207.0	-4.7	-1.5	-1.3	0.10	0.10	0.94	
1,303.0	0.40	180.90	1,303.0	-5.4	-1.7	-1.5	0.20	0.00	-29.48	
1,398.0	0.40	211.50	1,398.0	-6.0	-1.8	-1.6	0.22	0.00	32.21	
1,494.0	1.70	218.50	1,494.0	-7.4	-2.9	-2.7	1.36	1.35	7.29	
1,580.0	2.40	236.40	1,579.9	-9.4	-5.2	-4.9	1.09	0.81	20.81	
1,685.0	3.20	241.90	1,684.8	-12.0	-9.6	-9.2	0.80	0.76	5.24	
1,781.0	4.90	248.40	1,780.5	-14.7	-15.8	-15.3	1.83	1.77	6.77	
1,876.0	4.90	245.80	1,875.2	-17.9	-23.3	-22.7	0.23	0.00	-2.74	
1,972.0	6.50	263.00	1,970.7	-20.2	-32.4	-31.7	2.42	1.67	17.92	
2,068.0	6.30	260.00	2,066.1	-21.8	-43.0	-42.3	0.41	-0.21	-3.13	
2,163.0	6.10	258.10	2,160.6	-23.8	-53.0	-52.3	0.30	-0.21	-2.00	
2,258.0	7.70	252.60	2,254.9	-26.7	-64.1	-63.2	1.82	1.68	-5.79	
2,353.0	7.70	249.80	2,349.0	-30.8	-76.1	-75.1	0.39	0.00	-2.95	
2,449.0	7.70	246.80	2,444.2	-35.6	-88.0	-86.9	0.42	0.00	-3.13	
2,545.0	7.40	245.00	2,539.3	-40.7	-99.6	-98.2	0.40	-0.31	-1.88	
2,641.0	7.00	243.10	2,634.6	-46.0	-110.4	-108.9	0.48	-0.42	-1.98	
2,737.0	7.30	242.10	2,729.8	-51.5	-121.0	-119.3	0.34	0.31	-1.04	
2,832.0	7.00	242.90	2,824.1	-56.9	-131.5	-129.6	0.33	-0.32	0.84	
2,928.0	6.90	241.00	2,919.4	-62.4	-141.7	-139.7	0.26	-0.10	-1.98	
3,024.0	6.70	238.50	3,014.7	-68.1	-151.5	-149.3	0.37	-0.21	-2.60	
3,120.0	6.30	238.90	3,110.1	-73.8	-160.8	-158.4	0.42	-0.42	0.42	
3,216.0	6.20	238.40	3,205.5	-79.2	-169.8	-167.1	0.12	-0.10	-0.52	
3,311.0	5.90	235.00	3,300.0	-84.7	-178.1	-175.3	0.49	-0.32	-3.58	
3,407.0	5.70	231.70	3,395.5	-90.5	-185.9	-182.9	0.40	-0.21	-3.44	
3,502.0	5.50	226.40	3,490.0	-96.5	-192.9	-189.7	0.58	-0.21	-5.58	
3,598.0	6.60	235.60	3,585.5	-102.8	-200.8	-197.4	1.52	1.15	9.58	
3,694.0	6.40	236.60	3,680.9	-108.9	-209.8	-206.2	0.24	-0.21	1.04	
3,789.0	6.20	236.40	3,775.3	-114.6	-218.5	-214.7	0.21	-0.21	-0.21	
3,885.0	6.20	234.00	3,870.8	-120.6	-227.0	-223.1	0.27	0.00	-2.50	
3,980.0	6.30	234.20	3,965.2	-126.6	-235.4	-231.2	0.11	0.11	0.21	
4,076.0	5.90	232.70	4,060.6	-132.7	-243.6	-239.2	0.45	-0.42	-1.56	
4,171.0	6.00	231.30	4,155.1	-138.8	-251.4	-246.8	0.19	0.11	-1.47	
4,267.0	5.90	231.90	4,250.6	-144.9	-259.2	-254.4	0.12	-0.10	0.63	
4,363.0	5.40	229.20	4,346.1	-150.9	-266.5	-261.5	0.59	-0.52	-2.81	
4,458.0	6.60	234.00	4,440.6	-157.1	-274.3	-269.1	1.37	1.26	5.05	
4,554.0	6.90	230.60	4,536.0	-164.0	-283.2	-277.8	0.52	0.31	-3.54	
4,649.0	6.00	227.50	4,630.4	-170.9	-291.2	-285.6	1.02	-0.95	-3.26	
4,745.0	5.50	230.80	4,725.9	-177.2	-298.5	-292.7	0.62	-0.52	3.44	
4,841.0	6.30	239.10	4,821.4	-182.9	-306.6	-300.6	1.22	0.83	8.65	

<b>Company:</b>	PDC Energy Inc. DJ Basin	<b>Local Co-ordinate Reference:</b>	Well Boulter Farms 27H-302
<b>Project:</b>	SEC.27-T5N-R65W	<b>TVD Reference:</b>	WELL @ 4680.0ft (Ensign Rig #152 - RKB - 23')
<b>Site:</b>	Boulter Farms 5N65W27H Pad Sec.27-T5N-R65W	<b>MD Reference:</b>	WELL @ 4680.0ft (Ensign Rig #152 - RKB - 23')
<b>Well:</b>	Boulter Farms 27H-302	<b>North Reference:</b>	True
<b>Wellbore:</b>	Boulter Farms 27H-302 Wellbore #1	<b>Survey Calculation Method:</b>	Minimum Curvature
<b>Design:</b>	Boulter Farms 27H-302 Wellbore #1	<b>Database:</b>	US_EDM

Survey										
Measured Depth (ft)	Inclination (°)	Azimuth (°)	Vertical Depth (ft)	+N/-S (ft)	+E/-W (ft)	Vertical Section (ft)	Dogleg Rate (°/100usft)	Build Rate (°/100usft)	Turn Rate (°/100usft)	
4,935.0	6.40	247.20	4,914.8	-187.5	-315.8	-309.7	0.96	0.11	8.62	
5,031.0	6.10	244.90	5,010.2	-191.8	-325.4	-319.1	0.41	-0.31	-2.40	
5,127.0	5.50	245.80	5,105.7	-195.8	-334.2	-327.8	0.63	-0.63	0.94	
5,223.0	5.00	246.80	5,201.3	-199.4	-342.3	-335.7	0.53	-0.52	1.04	
5,318.0	4.30	240.50	5,296.0	-202.7	-349.2	-342.5	0.91	-0.74	-6.63	
5,414.0	3.80	240.80	5,391.8	-206.1	-355.1	-348.3	0.52	-0.52	0.31	
5,510.0	2.90	242.60	5,487.6	-208.7	-360.0	-353.2	0.94	-0.94	1.88	
5,606.0	1.90	238.70	5,583.5	-210.7	-363.5	-356.6	1.05	-1.04	-4.06	
5,701.0	1.60	238.50	5,678.5	-212.2	-366.0	-359.0	0.32	-0.32	-0.21	
5,797.0	2.00	234.70	5,774.4	-213.9	-368.5	-361.5	0.43	0.42	-3.96	
5,892.0	2.10	227.80	5,869.4	-216.0	-371.1	-364.1	0.28	0.11	-7.26	
5,987.0	1.80	227.30	5,964.3	-218.2	-373.5	-366.4	0.32	-0.32	-0.53	
6,114.0	2.30	217.30	6,091.2	-221.5	-376.5	-369.3	0.48	0.39	-7.87	
6,209.0	2.30	209.70	6,186.2	-224.7	-378.6	-371.3	0.32	0.00	-8.00	
6,305.0	4.90	114.10	6,282.0	-228.1	-375.9	-368.4	5.85	2.71	-99.58	
6,401.0	17.10	104.10	6,376.1	-233.2	-358.4	-350.7	12.82	12.71	-10.42	
6,497.0	23.30	99.90	6,466.1	-239.9	-325.9	-318.1	6.63	6.46	-4.38	
6,592.0	29.30	96.70	6,551.3	-245.9	-284.3	-276.3	6.49	6.32	-3.37	
6,687.0	34.10	97.20	6,632.1	-251.9	-234.8	-226.6	5.06	5.05	0.53	
6,783.0	39.30	90.20	6,709.1	-255.4	-177.6	-169.4	6.94	5.42	-7.29	
6,878.0	45.60	85.40	6,779.1	-252.8	-113.6	-105.5	7.45	6.63	-5.05	
6,974.0	53.30	86.10	6,841.5	-247.4	-40.9	-33.0	8.04	8.02	0.73	
7,070.0	64.80	90.00	6,890.8	-244.8	41.2	49.0	12.47	11.98	4.06	
7,079.7	66.03	89.95	6,894.8	-244.8	50.0	57.8	12.64	12.63	-0.56	
<b>TPZ - 460' Setback - 1406'FSL, 460'FWL, SEC.27</b>										
7,165.0	76.80	89.50	6,922.0	-244.4	130.8	138.5	12.64	12.63	-0.52	
7,261.0	80.70	87.90	6,940.7	-242.2	224.9	232.5	4.38	4.06	-1.67	
7,356.0	87.80	90.90	6,950.2	-241.2	319.3	326.9	8.11	7.47	3.16	
7,365.4	88.02	90.86	6,950.6	-241.4	328.8	336.3	2.33	2.29	-0.42	
<b>LPL 1428'FSL, 738'FWL, SEC.27</b>										
7,452.0	90.00	90.50	6,952.1	-242.4	415.3	422.8	2.33	2.29	-0.42	
7,547.0	89.80	89.80	6,952.2	-242.7	510.3	517.8	0.77	-0.21	-0.74	
7,643.0	90.10	89.10	6,952.3	-241.7	606.3	613.7	0.79	0.31	-0.73	
<b>Deepest TVD Drilled - 6952.32' TVD</b>										
7,739.0	90.10	88.40	6,952.2	-239.6	702.3	709.6	0.73	0.00	-0.73	
7,835.0	90.20	87.70	6,951.9	-236.4	798.2	805.3	0.74	0.10	-0.73	
7,930.0	89.80	89.50	6,951.9	-234.1	893.2	900.2	1.94	-0.42	1.89	
8,025.0	89.90	89.30	6,952.2	-233.1	988.2	995.1	0.24	0.11	-0.21	
8,121.0	90.10	88.80	6,952.2	-231.5	1,084.2	1,091.0	0.56	0.21	-0.52	
8,217.0	90.40	88.60	6,951.7	-229.3	1,180.1	1,186.8	0.38	0.31	-0.21	
8,312.0	90.80	88.10	6,950.7	-226.6	1,275.1	1,281.7	0.67	0.42	-0.53	
8,408.0	91.00	87.20	6,949.2	-222.6	1,371.0	1,377.4	0.96	0.21	-0.94	
8,503.0	90.70	90.00	6,947.8	-220.3	1,465.9	1,472.2	2.96	-0.32	2.95	

<b>Company:</b>	PDC Energy Inc. DJ Basin	<b>Local Co-ordinate Reference:</b>	Well Boulter Farms 27H-302
<b>Project:</b>	SEC.27-T5N-R65W	<b>TVD Reference:</b>	WELL @ 4680.0ft (Ensign Rig #152 - RKB - 23')
<b>Site:</b>	Boulter Farms 5N65W27H Pad Sec.27-T5N-R65W	<b>MD Reference:</b>	WELL @ 4680.0ft (Ensign Rig #152 - RKB - 23')
<b>Well:</b>	Boulter Farms 27H-302	<b>North Reference:</b>	True
<b>Wellbore:</b>	Boulter Farms 27H-302 Wellbore #1	<b>Survey Calculation Method:</b>	Minimum Curvature
<b>Design:</b>	Boulter Farms 27H-302 Wellbore #1	<b>Database:</b>	US_EDM

Survey									
Measured Depth (ft)	Inclination (°)	Azimuth (°)	Vertical Depth (ft)	+N/-S (ft)	+E/-W (ft)	Vertical Section (ft)	Dogleg Rate (°/100usft)	Build Rate (°/100usft)	Turn Rate (°/100usft)
8,599.0	90.10	90.00	6,947.2	-220.3	1,561.9	1,568.2	0.63	-0.63	0.00
8,695.0	90.40	89.30	6,946.7	-219.7	1,657.9	1,664.1	0.79	0.31	-0.73
8,790.0	90.70	89.50	6,945.8	-218.7	1,752.9	1,759.0	0.38	0.32	0.21
8,886.0	90.70	89.30	6,944.6	-217.7	1,848.9	1,854.9	0.21	0.00	-0.21
8,982.0	91.00	88.80	6,943.2	-216.1	1,944.9	1,950.8	0.61	0.31	-0.52
9,077.0	90.00	90.20	6,942.4	-215.3	2,039.9	2,045.7	1.81	-1.05	1.47
9,173.0	89.80	90.00	6,942.6	-215.5	2,135.9	2,141.7	0.29	-0.21	-0.21
9,268.0	89.50	89.00	6,943.1	-214.6	2,230.9	2,236.6	1.10	-0.32	-1.05
9,364.0	90.10	90.70	6,943.5	-214.4	2,326.9	2,332.5	1.88	0.63	1.77
9,459.0	90.00	89.80	6,943.4	-214.8	2,421.9	2,427.5	0.95	-0.11	-0.95
9,554.0	89.60	89.80	6,943.7	-214.5	2,516.9	2,522.4	0.42	-0.42	0.00
9,650.0	89.30	89.10	6,944.6	-213.5	2,612.9	2,618.3	0.79	-0.31	-0.73
9,745.0	90.70	90.70	6,944.6	-213.4	2,707.8	2,713.3	2.24	1.47	1.68
9,841.0	90.70	90.40	6,943.5	-214.3	2,803.8	2,809.2	0.31	0.00	-0.31
9,937.0	90.50	89.80	6,942.5	-214.5	2,899.8	2,905.2	0.66	-0.21	-0.63
10,032.0	90.10	89.10	6,942.0	-213.6	2,994.8	3,000.1	0.85	-0.42	-0.74
10,128.0	90.90	91.10	6,941.1	-213.7	3,090.8	3,096.1	2.24	0.83	2.08
10,224.0	91.20	91.10	6,939.4	-215.6	3,186.8	3,192.0	0.31	0.31	0.00
10,320.0	91.00	90.40	6,937.5	-216.8	3,282.8	3,288.0	0.76	-0.21	-0.73
10,416.0	91.30	90.00	6,935.6	-217.2	3,378.7	3,383.9	0.52	0.31	-0.42
10,512.0	91.70	89.80	6,933.1	-217.0	3,474.7	3,479.9	0.47	0.42	-0.21
10,607.0	91.80	89.80	6,930.2	-216.7	3,569.7	3,574.8	0.11	0.11	0.00
10,703.0	90.50	91.60	6,928.3	-217.8	3,665.6	3,670.7	2.31	-1.35	1.88
10,799.0	90.50	92.10	6,927.4	-220.9	3,761.6	3,766.7	0.52	0.00	0.52
10,894.0	90.60	91.80	6,926.5	-224.2	3,856.5	3,861.7	0.33	0.11	-0.32
10,990.0	91.00	91.60	6,925.2	-227.0	3,952.5	3,957.7	0.47	0.42	-0.21
11,086.0	90.90	90.40	6,923.6	-228.7	4,048.4	4,053.7	1.25	-0.10	-1.25
11,181.0	90.90	89.80	6,922.1	-228.9	4,143.4	4,148.6	0.63	0.00	-0.63
11,277.0	91.30	89.70	6,920.2	-228.4	4,239.4	4,244.5	0.43	0.42	-0.10
11,372.0	91.70	89.10	6,917.8	-227.4	4,334.4	4,339.4	0.76	0.42	-0.63
11,468.0	91.00	91.20	6,915.5	-227.7	4,430.3	4,435.3	2.31	-0.73	2.19
11,564.0	90.60	91.10	6,914.2	-229.6	4,526.3	4,531.3	0.43	-0.42	-0.10
11,660.0	90.50	90.40	6,913.2	-230.9	4,622.3	4,627.3	0.74	-0.10	-0.73
11,755.0	90.50	90.50	6,912.4	-231.6	4,717.3	4,722.3	0.11	0.00	0.11
11,850.0	90.70	89.50	6,911.4	-231.6	4,812.3	4,817.2	1.07	0.21	-1.05
11,945.0	91.00	89.70	6,910.0	-231.0	4,907.3	4,912.1	0.38	0.32	0.21
12,041.0	90.90	89.30	6,908.4	-230.1	5,003.2	5,008.0	0.43	-0.10	-0.42
12,137.0	90.70	89.30	6,907.1	-228.9	5,099.2	5,103.9	0.21	-0.21	0.00
12,232.0	90.90	89.30	6,905.7	-227.8	5,194.2	5,198.8	0.21	0.21	0.00
12,328.0	90.70	90.00	6,904.4	-227.2	5,290.2	5,294.8	0.76	-0.21	0.73
12,424.0	90.70	90.40	6,903.2	-227.5	5,386.2	5,390.7	0.42	0.00	0.42
12,519.0	90.80	90.50	6,902.0	-228.3	5,481.2	5,485.7	0.15	0.11	0.11
12,615.0	90.70	90.70	6,900.7	-229.3	5,577.2	5,581.6	0.23	-0.10	0.21

<b>Company:</b>	PDC Energy Inc. DJ Basin	<b>Local Co-ordinate Reference:</b>	Well Boulter Farms 27H-302
<b>Project:</b>	SEC.27-T5N-R65W	<b>TVD Reference:</b>	WELL @ 4680.0ft (Ensign Rig #152 - RKB - 23')
<b>Site:</b>	Boulter Farms 5N65W27H Pad Sec.27-T5N-R65W	<b>MD Reference:</b>	WELL @ 4680.0ft (Ensign Rig #152 - RKB - 23')
<b>Well:</b>	Boulter Farms 27H-302	<b>North Reference:</b>	True
<b>Wellbore:</b>	Boulter Farms 27H-302 Wellbore #1	<b>Survey Calculation Method:</b>	Minimum Curvature
<b>Design:</b>	Boulter Farms 27H-302 Wellbore #1	<b>Database:</b>	US_EDM

Measured Depth (ft)	Inclination (°)	Azimuth (°)	Vertical Depth (ft)	+N/-S (ft)	+E/-W (ft)	Vertical Section (ft)	Dogleg Rate (°/100usft)	Build Rate (°/100usft)	Turn Rate (°/100usft)
12,710.0	90.80	90.70	6,899.5	-230.4	5,672.1	5,676.6	0.11	0.11	0.00
12,806.0	90.50	90.20	6,898.4	-231.2	5,768.1	5,772.6	0.61	-0.31	-0.52
12,902.0	90.60	90.40	6,897.5	-231.7	5,864.1	5,868.5	0.23	0.10	0.21
12,997.0	90.40	90.40	6,896.6	-232.4	5,959.1	5,963.5	0.21	-0.21	0.00
13,092.0	90.70	90.20	6,895.7	-232.9	6,054.1	6,058.5	0.38	0.32	-0.21
13,187.0	90.10	89.80	6,895.1	-232.9	6,149.1	6,153.4	0.76	-0.63	-0.42
13,283.0	90.00	89.50	6,895.0	-232.3	6,245.1	6,249.3	0.33	-0.10	-0.31
13,378.0	89.80	88.40	6,895.2	-230.5	6,340.1	6,344.2	1.18	-0.21	-1.16
13,473.0	89.00	91.80	6,896.2	-230.7	6,435.1	6,439.2	3.68	-0.84	3.58
13,568.0	88.30	91.60	6,898.4	-233.5	6,530.0	6,534.1	0.77	-0.74	-0.21
13,664.0	88.70	90.90	6,900.9	-235.6	6,626.0	6,630.1	0.84	0.42	-0.73
13,760.0	88.70	90.70	6,903.1	-237.0	6,721.9	6,726.1	0.21	0.00	-0.21
13,856.0	91.50	90.90	6,902.9	-238.3	6,817.9	6,822.0	2.92	2.92	0.21
13,951.0	91.70	90.70	6,900.3	-239.6	6,912.9	6,917.0	0.30	0.21	-0.21
14,017.0	91.60	90.90	6,898.4	-240.5	6,978.8	6,982.9	0.34	-0.15	0.30
14,075.0	91.60	90.90	6,896.7	-241.5	7,036.8	7,040.9	0.00	0.00	0.00
<b>BHL 1445'FSL, 2165'FWL, SEC.26</b>									

Target Name	Dip Angle (°)	Dip Dir. (°)	TVD (ft)	+N/-S (ft)	+E/-W (ft)	Northing (usft)	Easting (usft)	Latitude	Longitude
SHL 1651'FSL, 410'FWL - hit/miss target - Shape - Point	0.00	0.00	1.0	0.0	0.0	1,377,872.71	3,234,784.24	40.367600	-104.657390
BHL 1445'FSL, 2165'FW - survey misses target center by 18.0ft at 14075.0ft MD (6896.7 TVD, -241.5 N, 7036.8 E) - Point	0.00	0.00	6,890.0	-224.7	7,037.0	1,377,714.86	3,241,822.75	40.366980	-104.632137

Measured Depth (ft)	Vertical Depth (ft)	Local Coordinates +N/-S (ft)	+E/-W (ft)	Comment
7,079.7	6,894.8	-244.8	50.0	TPZ - 460' Setback - 1406'FSL, 460'FWL, SEC.27
7,643.0	6,952.3	-241.7	606.3	Deepest TVD Drilled - 6952.32' TVD

Checked By: \_\_\_\_\_ Approved By: \_\_\_\_\_ Date: \_\_\_\_\_