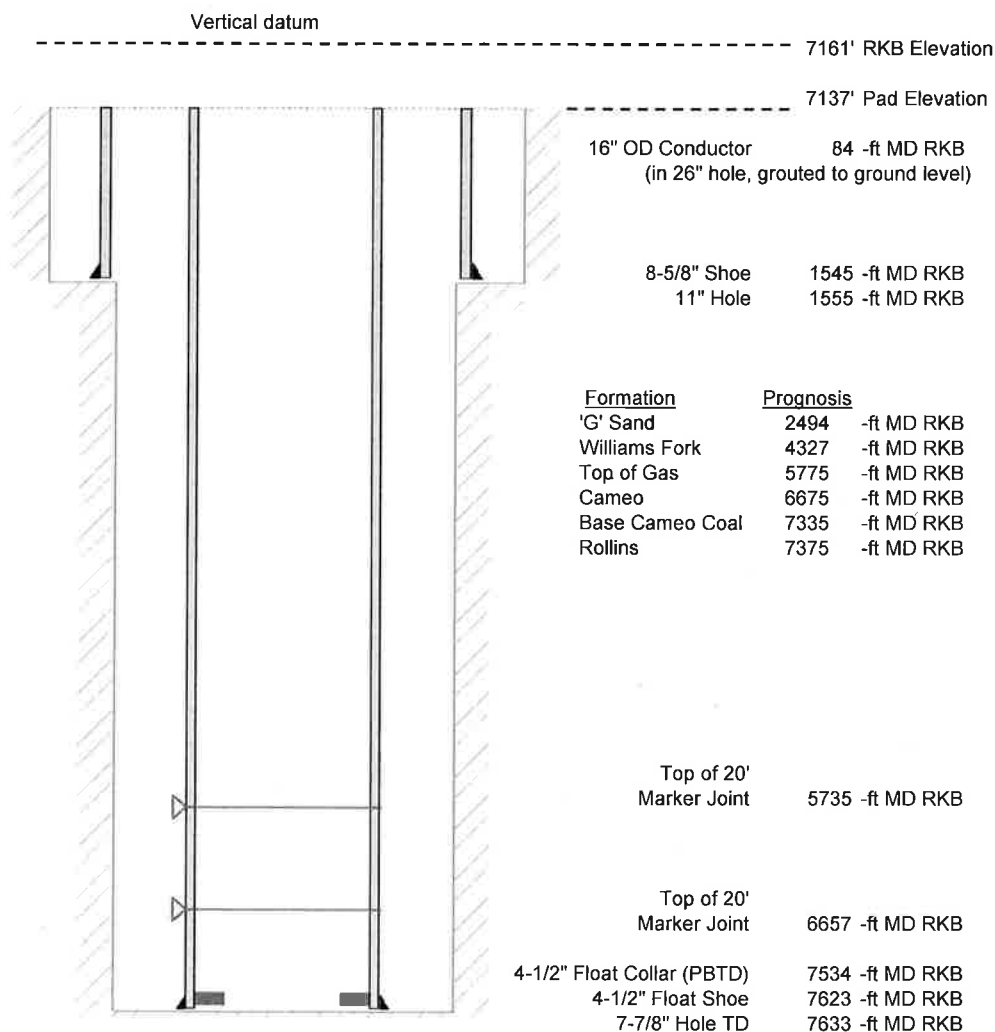


Laramie Energy, LLC  
 Nichols 0994-24-07E  
 Slot A-10  
 H&P 290 (24-ft KB)

API # : 077-10414-00  
 SW/4 NE/4 S24/T9S/R94W/6th PM  
 Mesa County, CO  
 Date of diagram : 12/4/2017



#### Cementing details

8-5/8" 24# J55 STC Surface Csg	Lead	Tail
Density (ppg)	12.0	12.5
Volume (sx)	190	107
Yield (cf/sx)	2.52	2.22
Top (ft RKB)	24	1024
Bottom (ft RKB)	1024	1545
Returns (full or partial)	Full	Full

4-1/2" 11.6# L-80 LTC Prod Csg	Lead	Tail
Density (ppg)	12.7	13.5
Volume (sx)	784	381
Yield (cf/sx)	1.97	1.90
Est Top (ft RKB)	1024	5575
Est Bottom (ft RKB)	5575	7623
Returns (full or partial)	Full	Full

Displacement
8.3 ppg
117 bbls

Other Remarks : Surface- 16 bbls cement to surface bbls spacer to surface.	Production-18
---	---------------