



Laramie Energy

End of Well Cement Report

Nichols 0994-24-07E 05-077-10414

S:24 T:9S R:94W Mesa, CO

Quote #: 02566/02572

I Execution #: 01400/01522



Laramie Energy

Attention: Mr. Aaron Duncan | aduncan@laramie-energy.com

Laramie Energy | 1401 17th St, Suite 1400 | Denver, CO 80202

Dear Mr. Duncan,

Thank you for the opportunity to provide cementing services on this well. BJ Services strives to achieve complete customer satisfaction. If you have any questions regarding the services or data provided, please contact BJ Services at any time.

Sincerely,
Zen Keith
Field Engineer III | (307) 757-7178 | Zen.Keith@bjservices.com

Field Office 28730 US-6, Rifle, CO 81650
Phone: (970) 632-2412

Sales Office 999 18th St. Suite 1200 Denver, CO 80202
Phone: (281) 408-2361

Cementing Treatment



Start Date	11/18/2017	Well	Nichols 0994-24-07E
End Date	2/28/2018	County	MESA
Client	LARAMIE ENERGY	State/Province	CO
Client Field Rep		API	05-077-10414
Service Supervisor		Formation	
Field Ticket No.	Surface	Rig	H&P 290
District	Rifle, CO	Type of Job	Surface

WELL GEOMETRY

Type	ID (in)	OD (in)	Wt. (lb/ft)	MD (ft)	Excess(%)	Grade	Thread
Previous Casing	15.25	16.00	65.00	60.00	0.00		
Open Hole	11.00			1,555.00	75.00		
Casing	8.10	8.63	24.00	1,544.25		J-55	ST&C

Shoe Length (ft): 40

HARDWARE

Bottom Plug Used?	Yes	Tool Type	Float Collar
Bottom Plug Provided By	Non BJ	Tool Depth (ft)	1,545.00
Bottom Plug Size	8.625	Max Tubing Pressure - Rated (psi)	0.00
Top Plug Used?	Yes	Max Tubing Pressure - Operated (psi)	
Top Plug Provided By	Non BJ	Max Casing Pressure - Rated (psi)	2,950.00
Top Plug Size	8.625	Max Casing Pressure - Operated (psi)	2,360.00
Centralizers Used	Yes	Pipe Movement	None
Centralizers Quantity	18.00	Job Pumped Through	Manifold
Centralizers Type	Bow	Top Connection Thread	8 rnd
Landing Collar Depth (ft)	1,484	Top Connection Size	8.625

Cementing Treatment



CIRCULATION PRIOR TO JOB

Well Circulated By	Rig	Solids Present at End of Circulation	No
Circulation Prior to Job	Yes	10 sec SGS	12.00
Circulation Time (min)	30.00	10 min SGS	52.00
Circulation Rate (bpm)	10.00	30 min SGS	77.00
Circulation Volume (bbls)	300.00	Flare Prior to/during the Cement Job	No
Lost Circulation Prior to Cement Job	No	Gas Present	No
Mud Density In (ppg)	9.10	Gas Units	0
Mud Density Out (ppg)	9.10		
PV Mud In	28		
PV Mud Out	28		
YP Mud In	28		
YP Mud Out	28		

TEMPERATURE

Ambient Temperature (°F)	26.00	Slurry Cement Temperature (°F)	41.00
Mix Water Temperature (°F)	38.00	Flow Line Temperature (°F)	99.00

BJ FLUID DETAILS

Fluid Type	Fluid Name	Density (ppg)	Yield (Cu Ft/sk)	H2O Req. (gals/sk)	Vol (sk)	Vol (Cu Ft)	Vol (bbls)
Spacer / Pre Flush / Flush	Fresh Water	8.3300					40.0000
Lead Slurry	S100-12	12.0000	2.5329	14.89	191	480.0000	85.5000
Tail Slurry	S100-12	12.5000	2.2282	12.62	107	237.0000	42.1000
Displacement Final	Water	8.3300				0.0000	94.5000

Cementing Treatment



Fluid Type	Fluid Name	Component	Concentration	UOM
Lead Slurry	S100-12	CEMENT, ASTM TYPE III	100.00	PCT
Lead Slurry	S100-12	CEMENT EXTENDER, SODIUM METASILICATE, A-2	2.00	LBS/SK
Lead Slurry	S100-12	FP-25, Dry Foam Preventer (BJS Only)	0.30	BWOB
Lead Slurry	S100-12	CEMENT EXTENDER, GYPSUM, A-10	5.00	BWOB
Lead Slurry	S100-12	IntegraSeal CELLO	0.13	LBS/SK
Lead Slurry	S100-12	ACCELERATOR, SALT, CHLORIDE, CALCIUM, A- 7P, PELLETS	2.00	LBS/SK
Tail Slurry	S100-12	CEMENT EXTENDER, SODIUM METASILICATE, A-2	2.00	LBS/SK
Tail Slurry	S100-12	CEMENT, ASTM TYPE III	100.00	PCT
Tail Slurry	S100-12	IntegraSeal CELLO	0.13	LBS/SK
Tail Slurry	S100-12	CEMENT EXTENDER, GYPSUM, A-10	5.00	BWOB
Tail Slurry	S100-12	FP-25, Dry Foam Preventer (BJS Only)	0.30	BWOB
Tail Slurry	S100-12	ACCELERATOR, SALT, CHLORIDE, CALCIUM, A- 7P, PELLETS	2.00	LBS/SK

TREATMENT SUMMARY

Time	Fluid	Rate (bpm)	Fluid Vol. (bbls)	Pipe Pressure (psi)	Annulus Pressure (psi)	Comments
11/30/2017 10:05 PM	Fresh Water	5.00	40.00	282.00		
11/30/2017 10:27 PM	S100-12	5.00	85.50	301.00		
11/30/2017 10:43 PM	S100-12	5.00	42.10	322.00		
11/30/2017 10:52 PM	Water	10.00	94.50	231.00		

Cementing Treatment



	Min	Max	Avg
Pressure (psi)	0.00	2,024.00	1,000.00
Rate (bpm)	2.00	10.00	6.00

DISPLACEMENT AND END OF JOB SUMMARY

Displaced By	BJ	Amount of Cement Returned/Reversed	16.00
Calculated Displacement Volume (bbls)	95.42	Method Used to Verify Returns	Visual
Actual Displacement Volume (bbls)	95.42	Amount of Spacer to Surface	40.00
Did Float Hold?	Yes	Pressure Left on Casing (psi)	
Bump Plug	Yes	Amount Bled Back After Job	0.50
Bump Plug Pressure (psi)	898.00	Total Volume Pumped (bbls)	296.50
Were Returns Planned at Surface	Yes	Top Out Cement Spotted	No
Cement returns During Job	Full	Lost Circulation During Cement Job	No

Customer Name Laramie Energy
 Well Name Nichols 24-07E
 Job Type Surface

District Rifle
 Supervisor Allen Tippetts
 Engineer _____



Seq No.	Start Date	Start Time	Event	Equipment	Density (lb/gal)	Pump Rate (bpm)	Pump Vol (bbls)	Pipe Pressure (psi)	Comments
1	11/30/2017	16:00	Call Out						BJ Services Crew Called out for Laramie Siurface Casing Job. Onlocation time 1400
2	11/30/2017								
3	11/30/2017								
4	11/30/2017	16:45	Waiting						Waiting on location for rig to TD well and run casing
5	11/30/2017	16:55	STEACS						STEACS briefing with BJ Services crew. Discuss job procedures, rig-up, safety concerns, task assignments, NDZ, muster points, and contingency plans.
6	11/30/2017	17:10	Spot Equipment						Spot BJ Services equipment.
7	11/30/2017	17:30	Rig-Up						Rig-Up surface equipment.
8	11/30/2017	21:30	STEACS						STEACS briefing with BJ Services crew rig crew, and company rep. Discuss job procedures, rig-up, safety concerns, task assignments, NDZ, muster points, and contingency plans.
9	11/30/2017	21:45	Rig-Up						Finial rig-up of surface equipment
10	11/30/2017	22:05	Pump Water		8.33	2	5	115	Pump 5 barrels fresh water to fill pumps and lines.
11	11/30/2017	22:10	Pressure Test					3000	Pressure test surface equipment to 3000PSI
12	11/30/2017	22:12	Release Pressure						Release pressure. Good test
13	11/30/2017	22:13	Punmp Water		8.33	5	35	282	Pump fresh water spacer
14	11/30/2017	22:27	Pump Lead Cement		12		86.06	301	Mix and pump 86.06 (191 sks) barrels lead cement @12.0 PPG, 2.53 YLD, 14.89 GAL/SK
15	11/30/2017	22:43	Pump Tail Cement		12.5		42.496	322	Mix and pump 42.496 (107sks) barrels tail cement @ 12.5 PPG, 2.23 YLD, 12.62 GAL/SK
16	11/30/2017	22:52	Pump Displacement		8.33	10	95.42	231	Pump 95.42 barrels fresh waer displacement
17	11/30/2017	23:09	Land Plug						Land Plug. Finial circulating pressure 898
18	11/30/2017	23:09	Pressure Test						Pressure test casing to 2024 PSI for 10 min
19	11/30/2017	23:19	Release Pressure						Release pressure. .5 barrels back to truck
20	11/30/2017	23:30	STEACS						STEACS briefing with BJ Services crew. Discuss rig-down, safety concerns, task assignments, NDZ, muster points, and contingency plans.
21	11/30/2017	23:40	Rig-Down						Rig-Down all surface equipment
22	12/1/2017	0:15	STEACS						STEACS briefing. Discuss directions to Rifle Yard, Weather conditions, night driving, road conditions, SWA, travel termination, and driver fatigue.
23	12/1/2017	1:00	Derpart Location						Depart Laramie Energy for Rifle Yard
24									
25	12/1/2017								Plugs landed, job pumped per job program. Full returns during job. No equipment issues, silos blown down on previous job. Good score card. 16 barrels cement to surface
26	12/1/2017								
27									
28									
29									
30									
31									
32									
33									
34									
35									
36									
37									
38									
39									

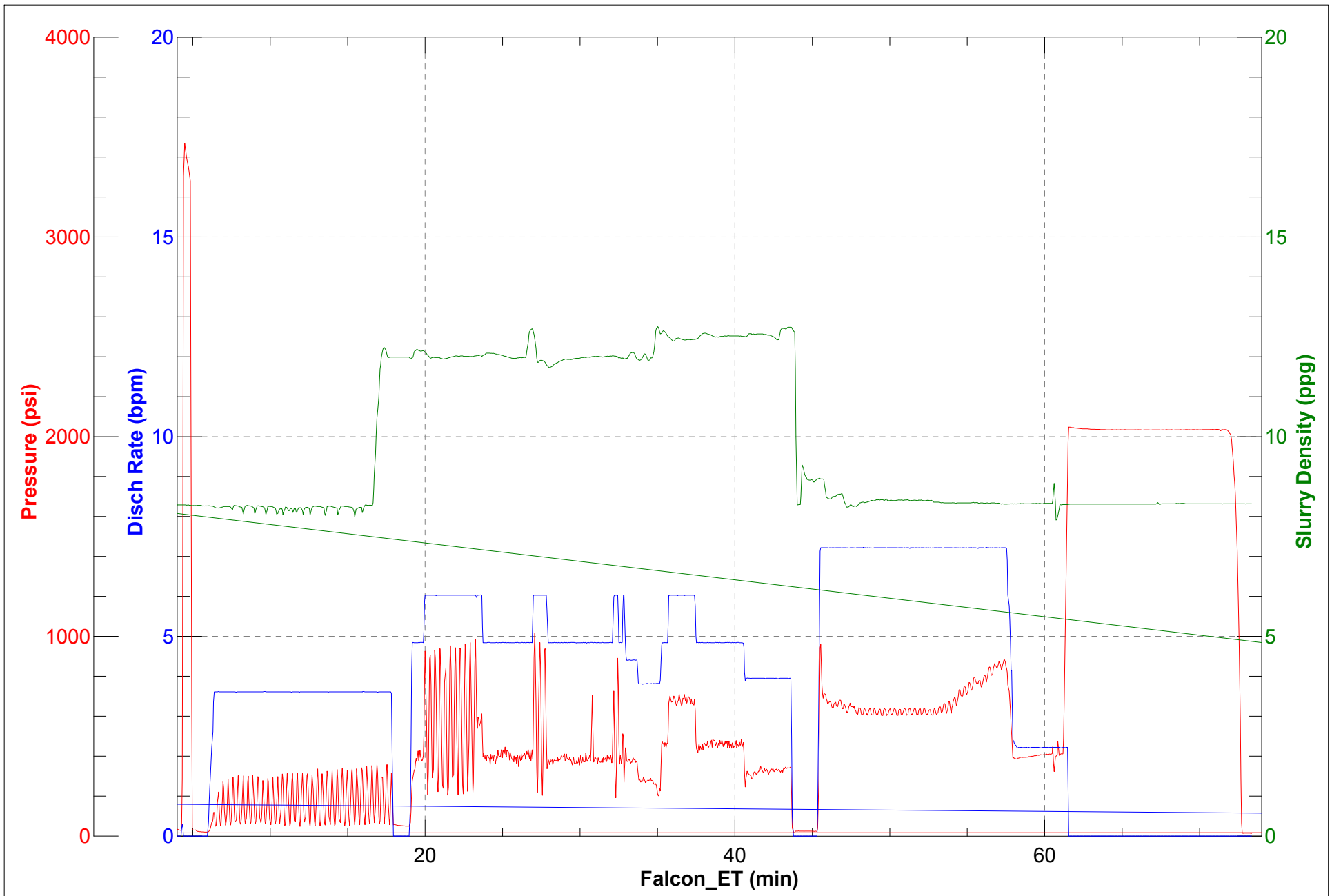


JobMaster Program Version 4.02C1

Job Number: 1199

Customer: Laranie Energy

Well Name: Nichols 24-07E



Cementing Treatment



Start Date	11/18/2017	Well	Nichols 0994-24-07E
End Date	2/28/2018	County	MESA
Client	LARAMIE ENERGY	State/Province	CO
Client Field Rep		API	05-077-10414
Service Supervisor		Formation	
Field Ticket No.	Production	Rig	H&P 290
District	Rifle, CO	Type of Job	Long String

WELL GEOMETRY

Type	ID (in)	OD (in)	Wt. (lb/ft)	MD (ft)	Excess(%)	Grade	Thread
Previous Casing	8.10	8.63	24.00	1,524.00		J-55	ST&C
Open Hole	8.88			7,633.00	10.00		
Casing	4.00	4.50	11.60	7,623.00		L-80	LT&C

Shoe Length (ft): 80

HARDWARE

Bottom Plug Used?	Yes	Tool Type	Float Collar
Bottom Plug Provided By	Non BJ	Tool Depth (ft)	7,623.00
Bottom Plug Size	4.500	Max Tubing Pressure - Rated (psi)	
Top Plug Used?	Yes	Max Tubing Pressure - Operated (psi)	
Top Plug Provided By	Non BJ	Max Casing Pressure - Rated (psi)	7,780.00
Top Plug Size	4.500	Max Casing Pressure - Operated (psi)	6,224.00
Centralizers Used	Yes	Pipe Movement	None
Centralizers Quantity	118.00	Job Pumped Through	Manifold
Centralizers Type	Bow	Top Connection Thread	8 round
Landing Collar Depth (ft)	7,545	Top Connection Size	4.5

Cementing Treatment



CIRCULATION PRIOR TO JOB

Well Circulated By	Rig	Solids Present at End of Circulation	No
Circulation Prior to Job	Yes	10 sec SGS	20.00
Circulation Time (min)	120.00	10 min SGS	46.00
Circulation Rate (bpm)	10.00	30 min SGS	84.00
Circulation Volume (bbls)	1,200.00	Flare Prior to/during the Cement Job	No
Lost Circulation Prior to Cement Job	No	Gas Present	No
Mud Density In (ppg)	9.50	Gas Units	0
Mud Density Out (ppg)	9.50		
PV Mud In	32		
PV Mud Out	32		
YP Mud In	24		
YP Mud Out	24		

TEMPERATURE

Ambient Temperature (°F)	16.00	Slurry Cement Temperature (°F)	36.00
Mix Water Temperature (°F)	34.00	Flow Line Temperature (°F)	98.00

BJ FLUID DETAILS

Fluid Type	Fluid Name	Density (ppg)	Yield (Cu Ft/sk)	H2O Req. (gals/sk)	Vol (sk)	Vol (Cu Ft)	Vol (bbls)
Spacer / Pre Flush / Flush	CD Spacer	11.0000					60.0000
Lead Slurry	P100-X2	12.7000	1.9775	11.11	784	1,548.0000	275.6000
Tail Slurry	P70-X1	13.5000	1.9033	9.59	381	725.0000	129.1000
Displacement Final	Freshwater with Clay Stabilizer	8.3300				0.0000	117.2000

Cementing Treatment



Fluid Type	Fluid Name	Component	Concentration	UOM
Spacer / Pre Flush / Flush	CD Spacer	SAND, S-8, Silica Flour, 200 Mesh	179.97	PPB
Spacer / Pre Flush / Flush	CD Spacer	GELLANT WATER, GW-86	0.80	PPB
Spacer / Pre Flush / Flush	CD Spacer	Spacer Surfactant, SS-247, (BJS Only)	0.80	GPB
Spacer / Pre Flush / Flush	CD Spacer	R-6 LOW TEMP RETARDER 50 LB BAG BJS	1.40	PPB
Lead Slurry	P100-X2	CEMENT, ASTM TYPE III	100.00	PCT
Lead Slurry	P100-X2	DISPERSANT, CD-31	0.10	BWOB
Lead Slurry	P100-X2	R-6 LOW TEMP RETARDER 50 LB BAG BJS	0.50	BWOB
Lead Slurry	P100-X2	GELLANT WATER, GW-86	0.10	BWOB
Lead Slurry	P100-X2	BONDING AGENT, BA-60	0.30	BWOB
Lead Slurry	P100-X2	FP-25, Dry Foam Preventer (BJS Only)	0.30	BWOB
Tail Slurry	P70-X1	CEMENT, CLASS G	70.00	PCT
Tail Slurry	P70-X1	Flyash (Rockies)	20.00	PCT
Tail Slurry	P70-X1	SAND, S-8, Silica Flour, 200 Mesh	25.00	BWOB
Tail Slurry	P70-X1	AXE-20	10.00	PCT
Tail Slurry	P70-X1	FLUID LOSS, FL-24, (BJS Only)	0.40	BWOB
Tail Slurry	P70-X1	R-6 LOW TEMP RETARDER 50 LB BAG BJS	0.30	BWOB
Tail Slurry	P70-X1	EXTENDER, BENTONITE	6.00	BWOB
Tail Slurry	P70-X1	BONDING AGENT, BA-60	0.20	BWOB
Tail Slurry	P70-X1	FP-25, Dry Foam Preventer (BJS Only)	0.30	BWOB
Displacement Final	Freshwater with Clay Stabilizer	CLAY STABILIZATION, ResCare CS	0.08	GPB

Cementing Treatment



TREATMENT SUMMARY

Time	Fluid	Rate (bpm)	Fluid Vol. (bbls)	Pipe Pressure (psi)	Annulus Pressure (psi)	Comments
12/4/2017 7:30 AM	CD Spacer	6.00	60.00	532.00		
12/4/2017 7:45 AM	P100-X2	6.00	275.60	652.00		
12/4/2017 8:34 AM	P70-X1	6.00	129.10	534.00		
12/4/2017 9:06 AM	Freshwater with Clay Stabilizer	10.00	117.20	892.00		

	Min	Max	Avg
Pressure (psi)	0.00	5,000.00	1,200.00
Rate (bpm)	2.00	8.00	6.00

DISPLACEMENT AND END OF JOB SUMMARY

Displaced By	BJ	Amount of Cement Returned/Reversed	0.00
Calculated Displacement Volume (bbls)	116.78	Method Used to Verify Returns	Visual
Actual Displacement Volume (bbls)	116.78	Amount of Spacer to Surface	18.00
Did Float Hold?	Yes	Pressure Left on Casing (psi)	0.00
Bump Plug	No	Amount Bled Back After Job	1.50
Bump Plug Pressure (psi)	1,585.00	Total Volume Pumped (bbls)	587.17
Were Returns Planned at Surface	No	Top Out Cement Spotted	No
Cement returns During Job	Full	Lost Circulation During Cement Job	No

Customer Name Laramie Energy
 Well Name Nichols 0994-24-07E
 Job Type Long String

District Rifle
 Supervisor Allen Tippetts
 Engineer _____



Seq No.	Start Date	Start Time	Event	Equipment	Density (lb/gal)	Pump Rate	Pump Vol	Pipe Pressure	Comments
1	12/3/2017	22:00	Call Out						BJ Service cement crew called out for Laramie Energy. On location time 04:00 12/4/20107
2	12/3/2017	23:00	STEACS						STEACS briefing with crew to cover journey management. Discuss directions, driving condtions, weather, convroy order, safety concerns, pre-trip inspections, and reasons to stop trip.
3	12/3/2017	23:30	Depart Facility						Depart Rifle Yard for Laramie Energy
4	12/4/2017	0:45	Inspection						Vehicle inspection at De Beque
5	12/4/2017	1:30	Arrive At Location						BJ Services crew arrive at Laramie Energy.
6	12/4/2017	1:45	STEACS						STEACS briefing with BJ Services crew. Discuss job procedures, safety concerns, rig-up procedures, SWA, muster points, contingency plans, and job/task assignments
7	12/4/2017	2:00	Rig-Up						Rig-Up surface equipment
8	12/4/2017	6:10	STEACS						STEACS briefing with BJ Services crew rig crew, and company rep. Discuss job procedures, safety concerns, rig-up procedures, SWA, muster points, contingency plans, and job/task assignments
9	12/4/2017	6:45	Rig-Up						Finial Rig-up of surface equipment
10	12/4/2017	7:20	Pump Water		8.33	2	5	523	Pump 5 barrels fresh water ahead to fill pumps and lines
11	12/4/2017	7:22	Pressure Test						Pressure test surface equipment to 3000 PSI
12	12/4/2017	7:24	Release Pressure						Release pressure. Good Test
13	12/4/2017	7:24	Pump Water		8.33	2	15	521	Pump 15 barrels fresh water
14	12/4/2017	7:30	Pump Spacer		11	6	60	532	Mix and pump 60 barrels spacer
15	12/4/2017	7:45	Pump Lead Cement		12.7	6	275.41	652	Mix and pump 275.41 Barrels (784 sks) lead cement @ 12.7 PPG 1.97 YLD, 11.11 GAL/ SK
18	12/4/2017	8:34	Pumt Tail Cement		13.5	6	128.93	534	Mix and pump 128.93 Barrels (381 sks) tail cement @ 13.5 PPG, 1.90 YLD, 9.59 GAL/SK
19	12/4/2017	9:01	Shutdown						Shutdown wash pumps and lines to pit. Drop plug. Plug witnessed by company rep.
20	12/4/2017	9:06	Pump Displacement		8.33	10	116.77	892	Pump 116.77 barrels fresh water displacement with clay stablizer
21	12/4/2017	9:19	Slow Rate		8.33	10			Slow rate to 2 barrels / min with 105 barrels away
22	12/4/2017	9:26	Land Plug					1585	Land plug with 116.77 barrels displacement away. Finial circulating pressure 1525 PSI Pressure casing to 3000PSI hold for 10 min.

Customer Name Laramie Energy
 Well Name Nichols 0994-24-07E
 Job Type Long String

District Rifle
 Supervisor Allen Tippetts
 Engineer _____



Seq No.	Start Date	Start Time	Event	Equipment	Density (lb/gal)	Pump Rate	Pump Vol	Pipe Pressure	Comments
23	12/4/2017	9:36	Release Pressure						Release pressure. Good Test 1.5 barrels back to truck
24	12/4/2017	9:45	STEACS						STEACS briefing with BJ Services crew. Discuss job procedures, safety concerns, rig-down procedures, SWA, muster points, contingency plans, and job/task assignments
25	12/4/2017	10:00	Rig-Down						Rig-Down all surface equipment not staying on location. Pump truck and both bulk trucks are staying in position and rigged up.
26	12/4/2017	10:15	End Job						End Job. Crew staying on location.

