



Wellbore Schematic

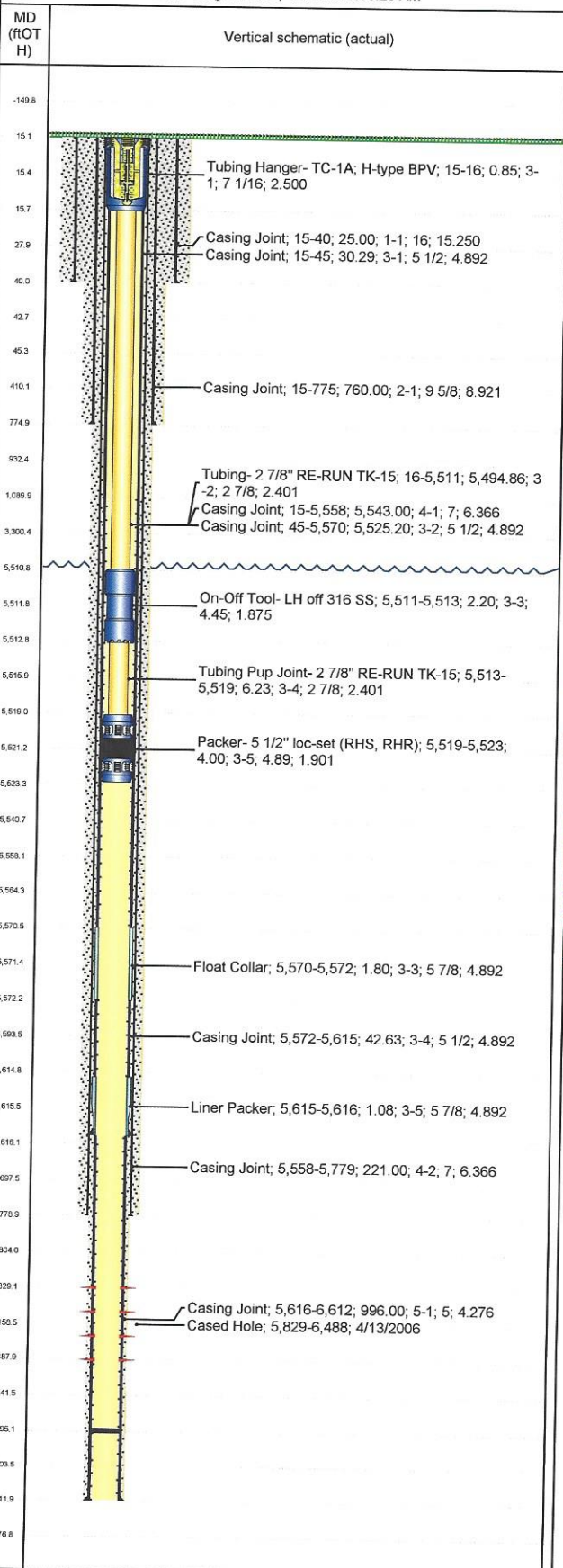
Well Name
Rigby A 3X

Lease
Rigby 'A'

Field Name
Rangely

Business Unit
Mid-Continent

Land - Original Hole, 4/5/2018 9:56:20 AM



Job Details

Job Category	Start Date	Rig/Unit End Date
Major Rig Work Over (MRWO)	3/6/2018	4/3/2018
Major Rig Work Over (MRWO)	4/4/2018	

Casing Strings

Csg Des	OD (in)	Wt/Len (lb/ft)	Grade	Top Thread	Set Depth (MD) (ftOT H)
Conductor	16				40
Surface	9 5/8	36.00	K-55		775
Production Tieback	5 1/2	17.00	L-80	LTC	5,616
Production Casing	7	23.00	K-55		5,779
Production Liner 1	5	18.00	N-80		6,612

Tubing Strings

Tubing - Production set at 5,523.1ftOT H on 4/2/2018 12:00

Tubing Description		Run Date		String Length (ft)		Set Depth (MD) (ftO...
Tubing - Production		4/2/2018		5,508.14		5,523.1
Item Des	Jts	OD (in)	Wt (lb/ft)	Grade	Len (ft)	Btm (ftOTH)
Tubing Hanger- TC-1A; H-type BPV	1	7 1/16			0.85	15.9
Tubing- 2 7/8" RE-RUN TK-15	170	2 7/8	6.50	J-55	5,494.86	5,510.7
On-Off Tool- LH off 316 SS	1	4.45			2.20	5,512.9
Tubing Pup Joint- 2 7/8" RE-RUN TK-15	1	2 7/8	6.50	J-55	6.23	5,519.1
Packer- 5 1/2" loc-set (RHS, RHR)	1	4.892			4.00	5,523.1

Perforations

Date	Top (ftOT H)	Btm (ftOT H)	Shot Dens (shots/ft)	Entered Shot Total	Linked Zone
4/13/2006	5,829.0	6,488.0			Weber, Original Hole

Other Strings

Run Date	Pull Date	Set Depth (ftOT H)	Com

Other In Hole

Des	Top (ftOT H)	Btm (ftOT H)	Run Date	Pull Date	Com
Sand	2,105.0	2,117.0	3/14/2018	3/15/2018	300#'s sand
Bridge Plug- 7" Kline RBP	2,117.0	2,123.0	3/14/2018	3/15/2018	7" Kline RBP
Sand	5,660.5	5,688.5	3/13/2018	3/22/2018	300#'s sand
Packer- 5" loc-set (RHS, RHR)	5,688.5	5,695.0	3/9/2018	3/26/2018	5" loc-set packer with splitter valve