

HALLIBURTON

iCem® Service

CHEVRON - MID-CONTINENT-EBUS

For: KEVIN HEJL

Date: Friday, March 16, 2018

RIGBY A 3X

RIGBY A 3X

CHEVRON - RIGBY-3-AX

Job Date: Friday, March 16, 2018

Sincerely, JOHN KEANE

Legal Notice

Warning Disclaimer

Although the information contained in this report is based on sound engineering practices, the copyright owner(s) does (do) not accept any responsibility whatsoever, in negligence or otherwise, for any loss or damage arising from the possession or use of the report whether in terms of correctness or otherwise. The application, therefore, by the user of this report or any part thereof, is solely at the user's own risk.

Limitations of Liability

Except as expressly set forth herein, there are no representations or warranties by Halliburton, express or implied, including implied warranties of merchantability and/or fitness for a particular purpose. In no event will Halliburton or its suppliers be liable for consequential, incidental, special, punitive or exemplary damages (including, without limitation, loss of data, profits, use of hardware, or software). Customer accepts full responsibility for any investment made based on results from the Software. Any interpretations, analyses or modeling of any data, including, but not limited to Customer data, and any recommendation or decisions based upon such interpretations, analyses or modeling are opinions based upon inferences from measurements and empirical relationships and assumptions, which inferences and assumptions are not infallible, and with respect to which professional may differ. Accordingly, Halliburton cannot and does not warrant the accuracy, correctness or completeness of any such interpretation, recommendation, modeling or other products of the Software Product. As such, any interpretation, recommendation or modeling resulting from the Software for the purpose of any drilling, well treatment, production or financial decision will be at the sole risk of Customer. Under no circumstances will Halliburton or its suppliers be liable for any damages.

Table of Contents

Job Design 4

 Overview 4

Real-Time Job Summary..... 5

 Job Event Log 5

Attachments..... 8

 CHEVRON - RIGBY-3-AX-LINER.png 8

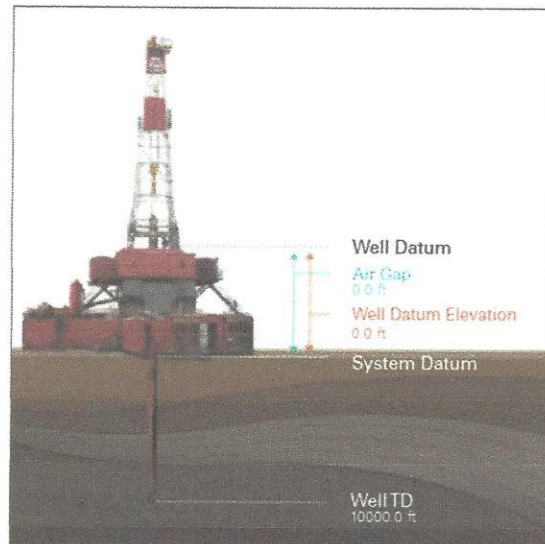
 CHEVRON - RIGBY-3-AX- TOP OUT.png 9

1.0 Job Design

1.1 Overview

Job Type	Primary Cement Job
Injection Path	Casing/Conventional
Foam Job	No

Well Snapshot



Simulations Performed

2.0 Real-Time Job Summary

2.1 Job Event Log

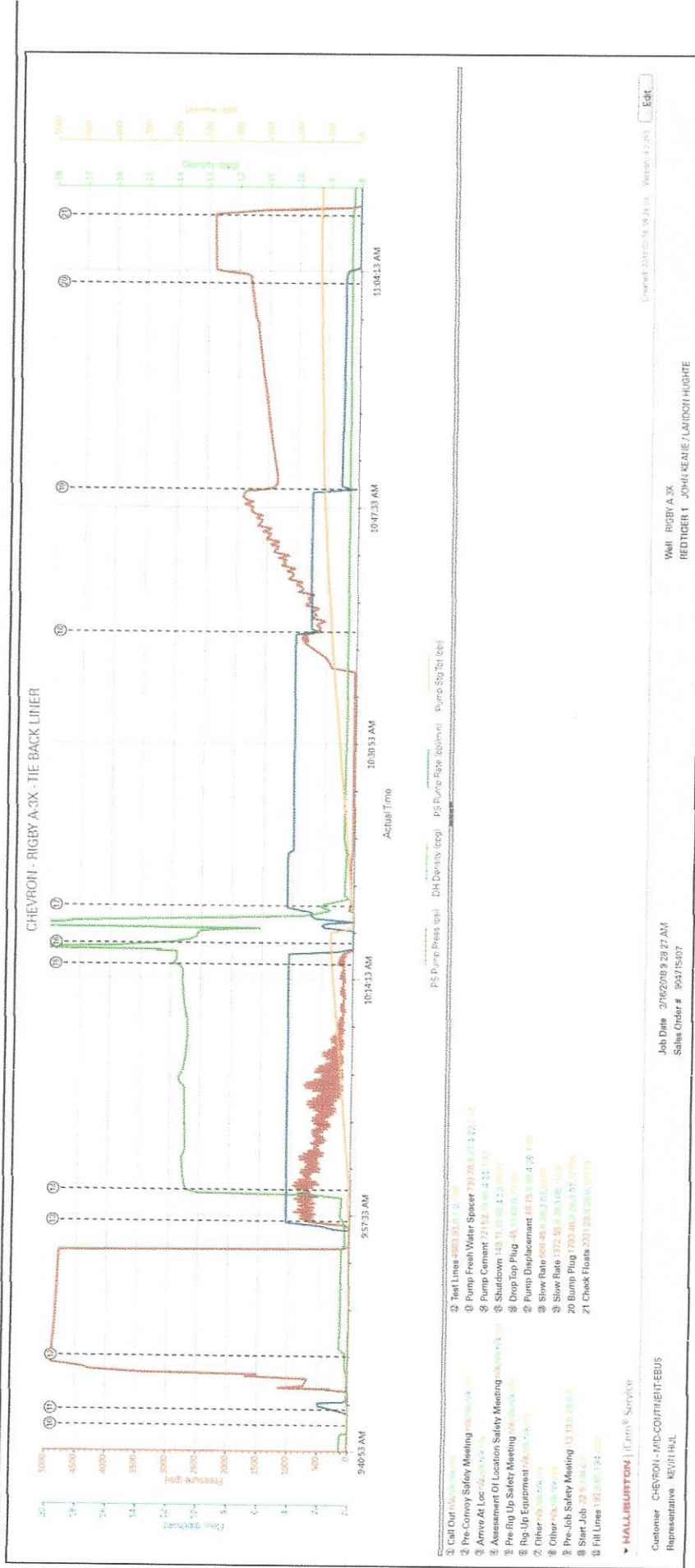
Type	Seq. No.	Activity	Graph Label	Date	Time	Source	Pass-Side Pump Pressure (psi)	Downhole Density (ppg)	Pass-Side Pump Rate (bbl/min)	Pump Stage Total (bbl)	Comments
Event	1	Call Out	Call Out	3/16/2018	02:00:00	USER					REQUESTED ON LOCATION TIME 02:00
Event	2	Pre-Convoy Safety Meeting	Pre-Convoy Safety Meeting	3/16/2018	04:00:00	USER					WITH HES, JSA COMPLETED, 1 F-450, 1 RED TIGER CEMENTING UNIT, 2 660 BULK TRUCKS
Event	3	Arrive At Loc	Arrive At Loc	3/16/2018	07:00:00	USER					RIG ON BOTTOM WITH CSG, CIRCULATING UPON HES ARRIVAL
Event	4	Assessment Of Location Safety Meeting	Assessment Of Location Safety Meeting	3/16/2018	07:10:00	USER					WITH HES, JSA COMPLETED, SDS OFFERED FOR ALL HES MATERIALS
Event	5	Pre-Rig Up Safety Meeting	Pre-Rig Up Safety Meeting	3/16/2018	07:15:00	USER					WITH HES, JSA COMPLETED
Event	6	Rig-Up Equipment	Rig-Up Equipment	3/16/2018	07:20:00	USER					WITH HES, 1 LINE RAN TO THE FLOOR, 1 LINE RAN TO THE PIT, 1 5.5 IN. QUICK-LATCH PLUG CONTAINER
Event	7	Other	Other	3/16/2018	08:30:00	USER					WATER TEST: CHLOR 200, PH 7.5, TEMP 45 DEG F
Event	8	Other	Other	3/16/2018	08:45:00	USER					TP 5613 FT 5.5 IN 17.0 LB/FT L-80, CSG 7 IN 23 LB/FT K-55, TIE BACK PACKER SET AT 5613 FT, WELL FLUID 8.33 LB/GAL WATER
Event	9	Pre-Job Safety Meeting	Pre-Job Safety Meeting	3/16/2018	09:30:00	USER					WITH HES, CHEVRON, AND AES, JSA COMPLETED
Event	16	Start Job	Start Job	3/16/2018	09:42:55	USER					

Event	17	Prime Pumps	Fill Lines	3/16/2018	09:44:01	USER	2 BBL FRESH WATER,
Event	25	Test Lines	Test Lines	3/16/2018	09:47:46	USER	LOW TEST AT 797 PSI, HIGH TEST AT 4881 PSI, PRESSURE HOLDING
Event	42	Pump Spacer	Pump Fresh Water Spacer	3/16/2018	09:57:17	USER	8 BBL, RETURNS AT 5 BBL AWAY
Event	45	Pump Cement	Pump Cement	3/16/2018	09:59:30	USER	MIXED AT 13.5 LB/GAL, 295 SKS, 1.40 FT3/SK, 4.30 GAL/SK, DENSITY VERIFIED USING PRESSURIZED MUD SCALES
Event	60	Shutdown	Shutdown	3/16/2018	10:15:25	USER	
Event	66	Drop Top Plug	Drop Top Plug	3/16/2018	10:16:57	USER	PLUG LAUNCHED, CUSTOMER WITNESSED
Event	69	Pump Displacement	Pump Displacement	3/16/2018	10:19:36	USER	129.5 BBL FRESH WATER
Event	71	Slow Rate	Slow Rate	3/16/2018	10:38:57	USER	SLOWED TO 3 BBL/MIN AT 80 BBL AWAY
Event	74	Slow Rate	Slow Rate	3/16/2018	10:49:01	USER	SLOWED TO 1 BBL/MIN AT 110 BBL AWAY
Event	77	Bump Plug	Bump Plug	3/16/2018	11:03:31	USER	PLUG BUMPED AT CALCULATED DISPLACEMENT, 1807 PSI
Event	78	Check Floats	Check Floats	3/16/2018	11:08:15	USER	FLOATS HOLDING, .5 BBL RETURNED TO THE TRUCK, 2380 PSI
Event	106	Other	Other	3/16/2018	12:18:47	USER	HES TIED INTO CSG VALVE (9 5/8 , 7 IN) ANNULUS, CUSTOMER REQUESTED TO PUMP NEAT G CEMENT AT 13.5 LB/GAL, INITIATED MOC VIA ENGINEERS, ADVISED CUSTOMER OF LACK OF LAB DATA ON THE REQUESTED SLURRY

Event	108	Pump Cement	Pump Cement	3/16/2018	12:21:03	USER							MIXED AT 13.5 LB/GAL, 120 SKS 1.66 FT3/SK, 8.81 GAL/SK, DENSITY VERIFIED USING PRESSURIZED MUD SCALES
Event	144	Shutdown	Shutdown	3/16/2018	12:49:05	USER	70.05	13.49	1.00	29.4			SHUTDOWN, SHUT IN CSG VALVE, 63 PSI
Event	146	End Job	End Job	3/16/2018	12:50:21	USER	26.92	13.51	0.00	29.4			GOOD CIRCULATION, PIPE WAS STATIC, CUSTOMER DID NOT USE SUGAR, CUSTOMER USED HES TOP PLUG
Event	154	Pre-Rig Down Safety Meeting	Pre-Rig Down Safety Meeting	3/16/2018	13:00:00	USER							WITH HES, JSA COMPLETED
Event	155	Rig Down Lines	Rig Down Lines	3/16/2018	13:30:00	USER							
Event	156	Pre-Convoy Safety Meeting	Pre-Convoy Safety Meeting	3/16/2018	14:00:00	USER							WITH HES, JSA COMPLETED
Event	157	Other	Other	3/16/2018	14:00:01	USER							SPACER 8 BBL FRESH WATER, CEMENT 73.5 BBL, FINAL DISPLACEMENT 129.5 BBL, TRACES OF CEMENT CIRCULATED TO SURFACE, 120 SKS TOP OUT USED, 29.5 BBL
Event	158	Other	Other	3/16/2018	14:00:02	USER							THANKS FOR USING HALLIBURTON, JOHN KEANE AND CREW

3.0 Attachments

3.1 CHEVRON - RIGBY-3-AX-LINER.png



3.2 CHEVRON - RIGBY-3-AX- TOP OUT.png

