

# HALLIBURTON

iCem<sup>®</sup> Service

## **TEP ROCKY MOUNTAIN LLC-EBUS**

**For: Terra**

Date: Monday, January 08, 2018

**SR 414-12 Surface**

**API#05-045-23455-00**

Sincerely,

**Grand Junction Cement Engineering**

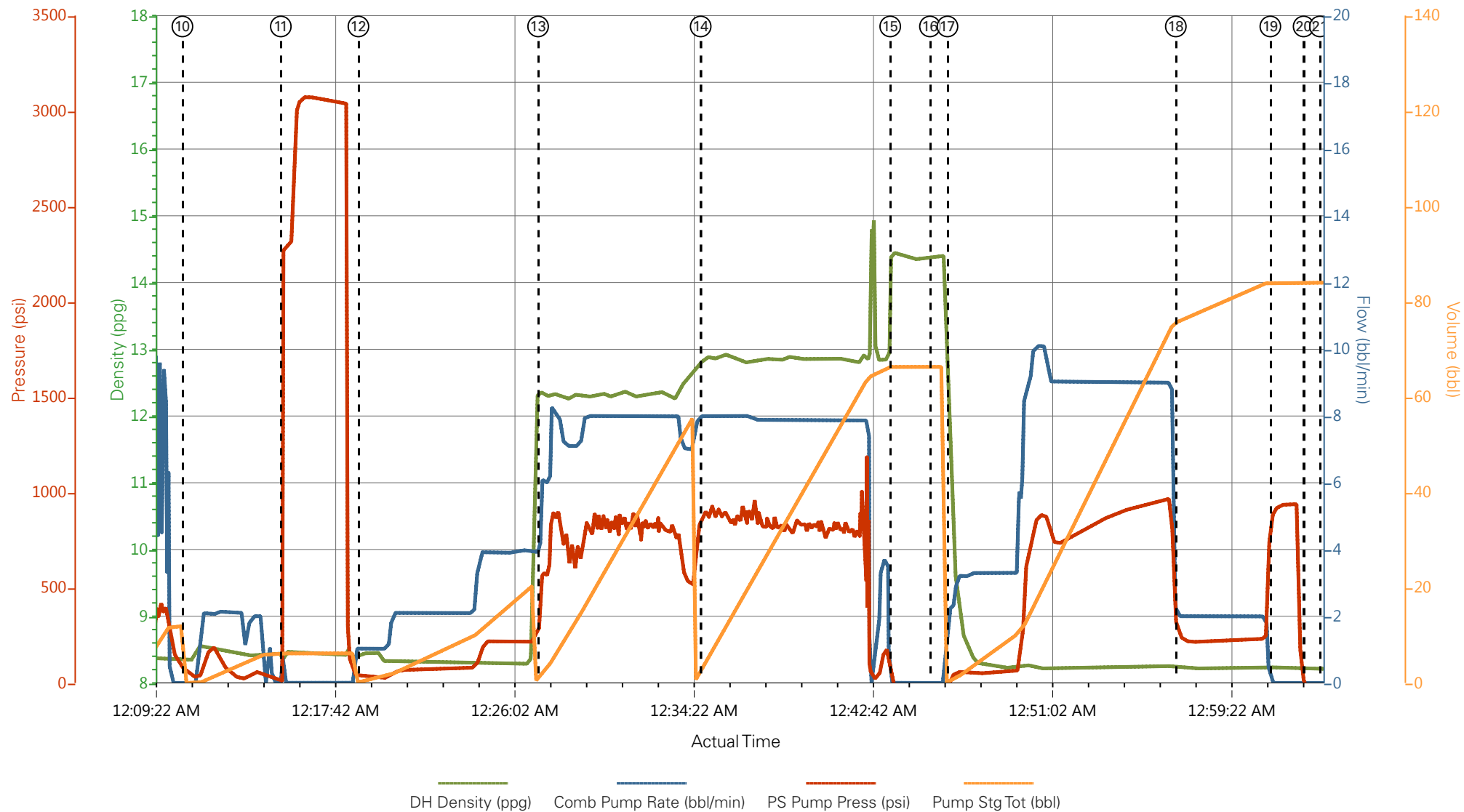
## 2.0 Real-Time Job Summary

## 2.1 Job Event Log

Type	Seq. No.	Graph Label	Date	Time	Source	DH Density (ppg)	Comb Pump Rate (bbl/min)	PS Pump Press (psi)	Pump Stg Tot (bbl)	Comments
Event	1	Call Out	1/7/2018	16:00:00	USER					
Event	2	Pre-Convoy Safety Meeting	1/7/2018	18:15:00	USER					
Event	3	Crew Leave Yard	1/7/2018	18:30:00	USER					
Event	4	Arrive At Loc	1/7/2018	20:30:00	USER					CREW ARRIVED ON LOC 1.5 HRS EARLY, RIG WAS RIGGING UP CASING CREW.
Event	5	Assessment Of Location Safety Meeting	1/7/2018	20:35:00	USER					
Event	6	Spot Equipment	1/7/2018	21:00:00	USER					
Event	7	Pre-Rig Up Safety Meeting	1/7/2018	21:05:00	USER					
Event	8	Rig-Up Equipment	1/7/2018	21:10:00	USER					
Event	9	Pre-Job Safety Meeting	1/7/2018	23:45:00	USER					
Event	10	Start Job	1/8/2018	00:10:45	COM5					TD: 1141 TP: 1131 SJ: 43.3' MW: 9.4 PPG 9 5/8" 32.3#/FT CSG IN 13 1/2" OH WATER TEST: PH: 7 POTASSIUM: 450 CHLORIDES: 0 SULFATES: <200 TEMP: 60 DEGREES
Event	11	Test Lines	1/8/2018	00:15:19	COM5	8.33	0.00	3000.00	2.0	3000 PSI TEST SUCCESSFUL
Event	12	Pump Spacer 1	1/8/2018	00:18:55	COM5	8.33	4.00	340.00	20.0	FRESH H2O SPACER
Event	13	Pump Lead Cement	1/8/2018	00:27:17	COM5	12.30	8.00	880.00	53.0	125 SKS @ 12.3 PPG 2.38 YLD 13.77 GAL/SK H2O
Event	14	Pump Tail Cement	1/8/2018	00:34:50	COM5	12.80	8.00	869.00	65.8	175 SKS @ 12.8 PPG 2.11 YLD 11.78 GAL/SK H2O
Event	15	Shutdown	1/8/2018	00:43:39	USER					
Event	16	Drop Top Plug	1/8/2018	00:45:30	COM5					PLUG AWAY

Event	17	Pump Displacement	1/8/2018	00:46:19	COM5	8.33	10.00	973.00	85.6	FRESH H2O DISPLACEMENT
Event	18	Slow Rate	1/8/2018	00:56:56	USER	8.33	2.00	214.00	75.0	
Event	19	Bump Plug	1/8/2018	01:01:19	USER	8.33	2.00	937.00	85.6	PLUG BUMPED AT CALCULATED DISPLACEMENT, FINAL CIRCULATING PRESSURE WAS 235PSI.
Event	20	Check Floats	1/8/2018	01:02:52	USER					FLOATS HELD, GAINED 1/2 BBL BACK TO PUMP.
Event	21	End Job	1/8/2018	01:03:38	COM5					
Event	22	Post-Job Safety Meeting (Pre Rig-Down)	1/8/2018	01:15:00	USER					GOOD CIRCULATION THROUGHOUT JOB. PIPE WAS LEFT STATIC. 40# SUGAR USED, NO ADD HOURS CHARGED. CIRCULATED 26 BBL CMT TO SURFACE.
Event	23	Rig-Down Equipment	1/8/2018	01:30:00	USER					
Event	24	Pre-Convoy Safety Meeting	1/8/2018	02:15:00	USER					
Event	25	Crew Leave Location	1/8/2018	02:30:00	USER					THANK YOU FOR CHOOSING HALLIBURTON CEMENTING OF GRAND JCT, CO ANTHONY ANDREWS AND CREW

# TEP - SR 414-12 - 9 5/8" SURFACE



- |   |                          |                     |   |
|---|--------------------------|---------------------|---|
| ① Call Out                              | ⑧ Rig-Up Equipment       | ⑮ Shutdown          | 22 Post-Job Safety Meeting (Pre Rig-Down) |
| ② Pre-Convoy Safety Meeting             | ⑨ Pre-Job Safety Meeting | ⑯ Drop Top Plug     | 23 Rig-Down Equipment                     |
| ③ Crew Leave Yard                       | ⑩ Start Job              | ⑰ Pump Displacement | 24 Pre-Convoy Safety Meeting              |
| ④ Arrive At Loc                         | ⑪ Test Lines             | ⑱ Slow Rate         | 25 Crew Leave Location                    |
| ⑤ Assessment Of Location Safety Meeting | ⑫ Pump Spacer 1          | ⑲ Bump Plug         |   |
| ⑥ Spot Equipment                        | ⑬ Pump Lead Cement       | 20 Check Floats     |   |
| ⑦ Pre-Rig Up Safety Meeting             | ⑭ Pump Tail Cement       | 21 End Job          |   |

▼ **HALLIBURTON** | iCem® Service

Created: 2018-01-07 23:06:50, Version: 4.2.393

Edit

Customer: TEP ROCKY MOUNTAIN LLC-EBUS

Job Date: 1/7/2018 11:08:01 PM

Well: SR 414-12

Representative: NATHAN BURR

Sales Order #: 904553909

ELITE 2: TRAVIS BROWN/ ANTHONY ANDREWS

# TEP - SR 414-12 - 9 5/8" SURFACE

