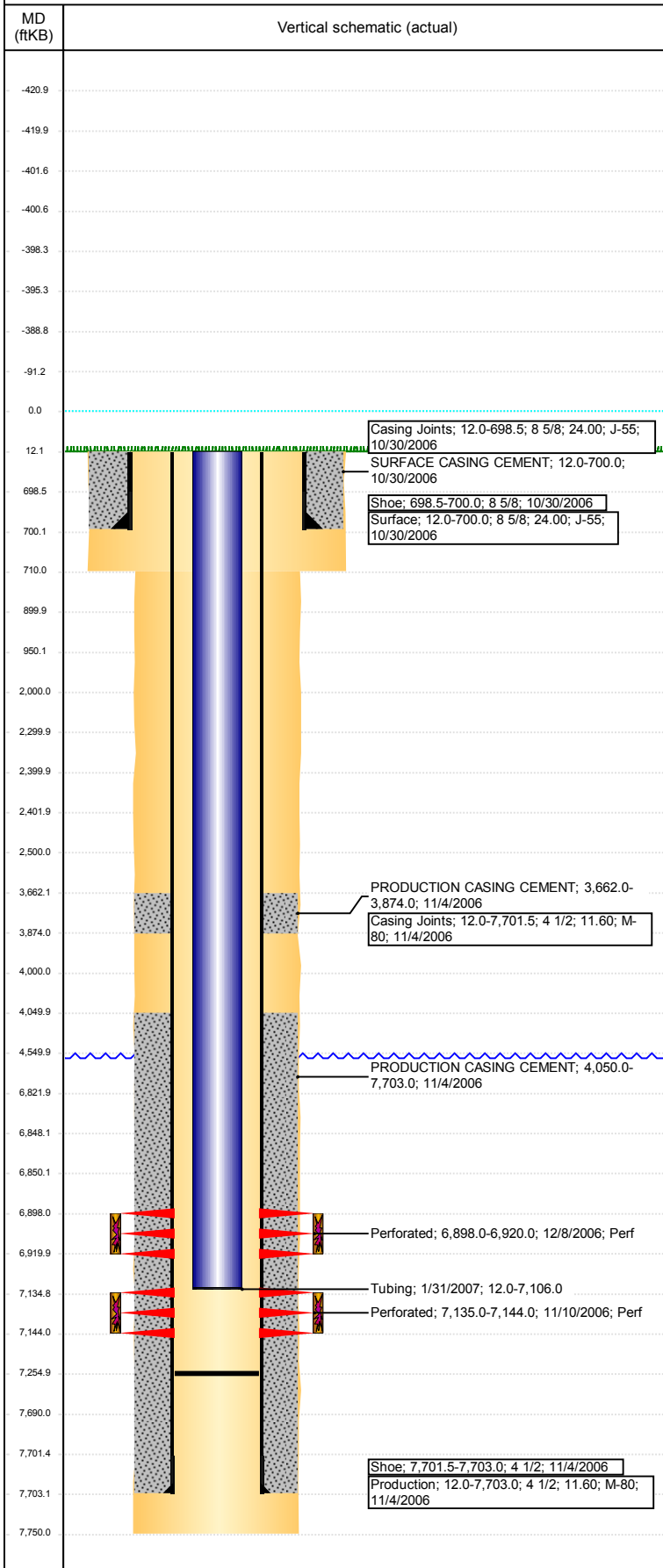


Wellbore Schematic Input Report

Well Name: LAMP H26-08

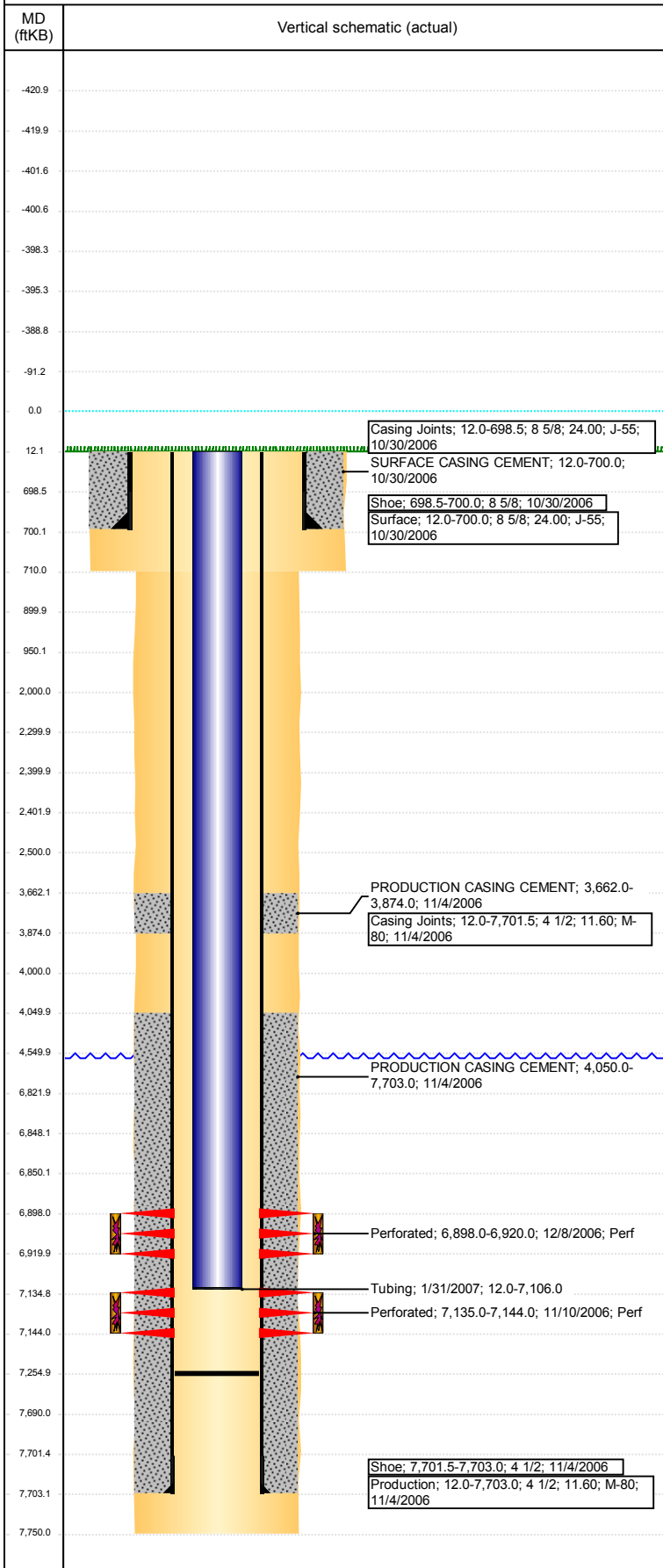
VERTICAL - ORIGINAL HOLE, 3/23/2018 11:22:35 AM



Well Header							
API 05-123-27403		Well Report Center 424403873		Well Configuration Type VERTICAL			
Original KB Elevation (ft) 4,865		KB - GL / MSL (ftKB) 12.00		Spud Date 10/30/2006		P & A Date	
Production Route C1-04			Well Production Status SI				SoRT Ignore No
Directions To Well				Actual Latitude (°) 40.19834342		Actual Longitude (°) -104.62358371	
Comment							
Congressional Location							
Quarter 3 SE	Quarter 4 NE	Section 26	Township 3	Twnshp N/S Dir N	Range 65	Range E/W Dir W	
Rig Operator							
Rig Operator							
Plug Back Total Depths							
Date	Depth (ftKB)	Method		Com			
1/30/2007	7,255.0	CASING TALLY		C/O PLUG, CHASE TO ALL OF #236 CSG AT 7255'...			
Wellbore Sections							
Section Des		Size (in)		Act Top, MD (ftKB)		Act Btm, MD (ftKB)	
SURFACE		12 1/4		12		710	
PRODUCTION		7 7/8		710		7,750	
Zone Statuses							
Zone Name		Status Date			Status		
NIOBRARA		7/13/2010			PR		
CODELL		3/22/2017			SI		
Casing Strings							
Surface, 700.0ftKB							
Casing Description Surface	Run Date 10/30/2006	OD (in) 8 5/8	Wt/Len (l... 24.00	Grade J-55	Top, MD (ft... 12.0	MD (ftKB) 700.0	
Production, 7,703.0ftKB							
Casing Description Production	Run Date 11/4/2006	OD (in) 4 1/2	Wt/Len (l... 11.60	Grade M-80	Top, MD (ft... 12.0	MD (ftKB) 7,703.0	
Cement							
Des		Start Date		Top (ftKB)		Btm (ftKB)	
SURFACE CASING CEMENT		10/30/2006		12.0		700.0	
PRODUCTION CASING CEMENT		11/4/2006		3,662.0		3,874.0	
PRODUCTION CASING CEMENT		11/4/2006		4,050.0		7,703.0	
Proposed Cement							
Des				Top (ftKB)		Btm (ftKB)	
Dump Bail				6,822.0		6,848.0	
Balance Plug				4,000.0		4,550.0	
Balance Plug				2,300.0		2,400.0	
Balance Plug				2,402.0		2,500.0	
Cement Squeeze				2,000.0		2,500.0	
Balance Plug				900.0		950.0	
Balance Plug				700.0		900.0	
Balance Plug				12.0		700.0	
Tubing Strings							
Tubing Description Tubing	Run Date 1/31/2007	String... 2 3/8	ID (in) 2.00	Wt (lb/ft) 4.70	Grade J-55	Len (ft) 7,094.00	Set De...
Tubing Components							
Item Des		OD (in)	Wt (lb/ft)	Grade	Jts	Len (ft)	Btm (ftKB) Btm (TVD) (ftKB)
Tubing		2 3/8	4.70	J-55	231	7,092.50	7,104.5
Seal Nipple		2 3/8			1	1.00	7,105.5
Notched collar		2 3/8			1	0.50	7,106.0
Other In Hole							
Run Date		Des			OD (in)	Top (ftKB)	Btm (ftKB)
Proposed Other In Hole							
Des		OD (in)		Top (ftKB)		Btm (ftKB)	
Cast Iron Bridge Plug		4		6,848.0		6,850.0	
Cement Retainer		4		2,400.0		2,402.0	

Well Name: LAMP H26-08

VERTICAL - ORIGINAL HOLE, 3/23/2018 11:22:36 AM



Logs			
Date	Type	Top, MD (ftKB)	Btm, MD (ftKB)
11/4/2006	COMPENSATED DENSITY	2,650.0	7,701.0
11/4/2006	DIFL/DENS/GR/GRD/CAL	700.0	7,721.0
11/10/2006	CBL/CCL/GR	3,543.0	7,688.0
10/13/2014	GYRO	10.0	7,000.0

Perforation Data				
Linked Zone	Sum of Entered Shot Total	Top (ftKB)	Btm (ftKB)	Date
NIORARA, ORIGINAL HOLE	132	6,898.00	6,920.00	12/8/2006
CODELL, ORIGINAL HOLE	36	7,135.00	7,144.00	11/10/2006
Total (Sum)	168			

Proposed Perforations				
Linked Zone	Sum of En...	Top Depth (ftKB)	Btm (ftKB)	Date
CODELL, ORIGINAL HOLE	0	2,500.00	2,500.00	2/22/2018
Total (Sum)	0			

Job Supply Amounts						
Supply Item Des	Type	Uni...	Job Category	Total...	Total...	Total...