

**Weld County, Colorado**  
**Section 07-T07N-R64W**  
**Pickaroon 7-04-04L**  
**plan1**

Section Details

Sec	MD	Inc	Azi	TVD	+N/-S	+E/-W	Dleg	Vsect	Annotation
1	0.00	0.00	0.00	0.00	0.00	0.00	0.00	0.00	
2	5500.00	0.00	0.00	5500.00	0.00	0.00	0.00	0.00	KOP Begin 10°/100' build
3	5771.36	27.14	51.31	5761.33	39.42	49.23	10.00	-46.42	Begin 27.14° tangent
4	6661.11	27.14	51.31	6553.14	293.11	365.98	0.00	-345.08	Begin 10°/100' build/turn
5	7767.46	90.00	270.71	7290.00	539.52	-167.18	10.00	203.69	Begin 90.00° lateral
6	17186.42	90.00	270.71	7290.00	657.02	-9585.40	0.00	9607.89	PBHL/TD 17186.42 MD/7290.00 TVD

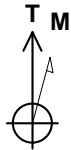
DESIGN TARGET DETAILS

Name	TVD	+N/-S	+E/-W	Northing	Easting	Latitude	Longitude
Pickaroon 7-4-4L BHL 2192 FSL 470 FWL	7290.00	657.02	-9585.40	14740521.42	1746358.33	40.58644296	-104.61842190
Pickaroon 7-4-4L LP 2192 FSL 470 FEL	7290.00	539.52	-167.18	14740448.42	1755776.98	40.58612547	-104.58450009

Pickaroon 7-04-04L			
Surf loc: 1652 FSL 302 FEL Section 07-T07N-R64W			
NAD83 Colorado - HARN			
Universal Transverse Mercator (US Survey Feet)			
Zone 13N (108 W to 102 W)			
RKB=4986+24 @ 5010.00ft			
Northing	Easting	Latitude	Longitude
14739909.70	1755946.71	40.58464403	-104.58389794

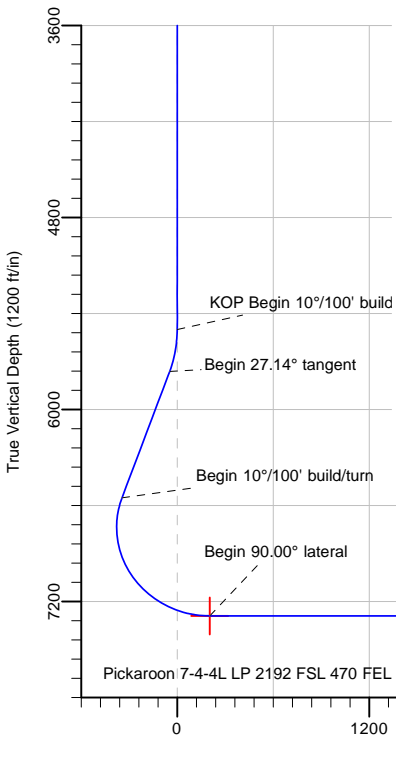
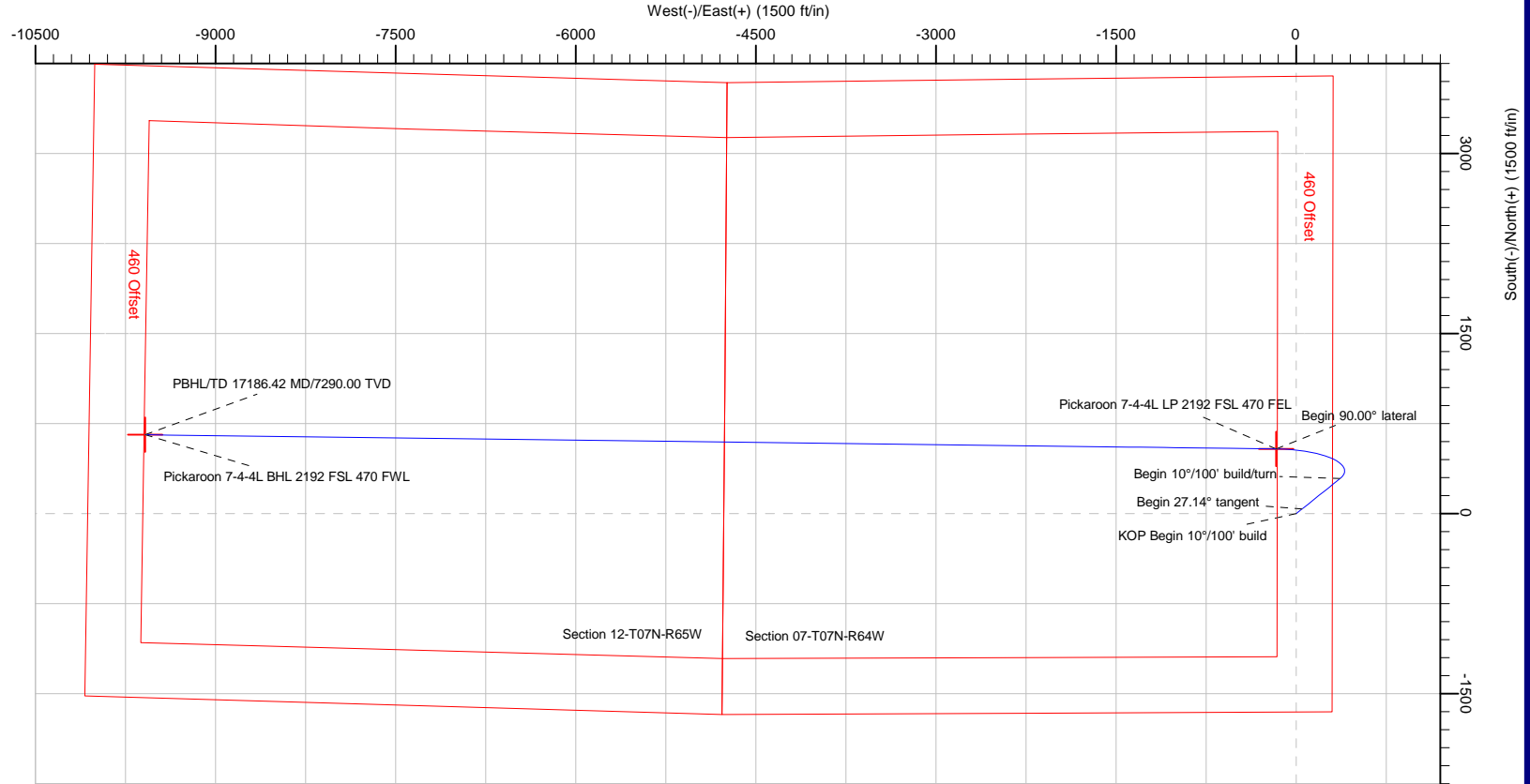
Azimuth Corrections:

To convert a Magnetic Direction to a True Direction, Add 7.98° East



Azimuths to True North  
Magnetic North: 7.98°

Magnetic Field  
Strength: 52351.8snT  
Dip Angle: 66.98°  
Date: 2/11/2018  
Model: HDGM



PBHL/TD 17186.42 MD/7290.00 TVD

Pickaroon 7-4-4L BHL 2192 FSL 470 FWL

Note: All lease lines and hard lines are estimates only and are subject to customers approval.

<b>Database:</b>	DB_Jul2216dt_v14	<b>Local Co-ordinate Reference:</b>	Well Pickaroon 7-04-04L
<b>Company:</b>	Confluence Resources	<b>TVD Reference:</b>	RKB=4986+24 @ 5010.00ft
<b>Project:</b>	Weld County, Colorado	<b>MD Reference:</b>	RKB=4986+24 @ 5010.00ft
<b>Site:</b>	Section 07-T07N-R64W	<b>North Reference:</b>	True
<b>Well:</b>	Pickaroon 7-04-04L	<b>Survey Calculation Method:</b>	Minimum Curvature
<b>Wellbore:</b>	Original Hole		
<b>Design:</b>	plan1		

<b>Project</b>	Weld County, Colorado		
<b>Map System:</b>	Universal Transverse Mercator (US Survey Feet)	<b>System Datum:</b>	Mean Sea Level
<b>Geo Datum:</b>	NAD83 Colorado - HARN		
<b>Map Zone:</b>	Zone 13N (108 W to 102 W)		

<b>Site</b>	Section 07-T07N-R64W				
<b>Site Position:</b>	<b>Northing:</b>	14,740,905.93 usft	<b>Latitude:</b>	40.58737934	
<b>From:</b> Map	<b>Easting:</b>	1,755,960.51 usft	<b>Longitude:</b>	-104.58383128	
<b>Position Uncertainty:</b>	0.00 ft	<b>Slot Radius:</b>	13-3/16 "	<b>Grid Convergence:</b>	0.27 °

<b>Well</b>	Pickaroon 7-04-04L, Surf loc: 1652 FSL 302 FEL Section 07-T07N-R64W					
<b>Well Position</b>	<b>+N/-S</b>	-996.16 ft	<b>Northing:</b>	14,739,909.70 usft	<b>Latitude:</b>	40.58464403
	<b>+E/-W</b>	-18.51 ft	<b>Easting:</b>	1,755,946.71 usft	<b>Longitude:</b>	-104.58389794
<b>Position Uncertainty</b>	0.00 ft	<b>Wellhead Elevation:</b>		<b>Ground Level:</b>	4,986.00 ft	

<b>Wellbore</b>	Original Hole				
<b>Magnetics</b>	<b>Model Name</b>	<b>Sample Date</b>	<b>Declination (°)</b>	<b>Dip Angle (°)</b>	<b>Field Strength (nT)</b>
	HDGM	2/11/2018	7.98	66.98	52,351.80000000

<b>Design</b>	plan1			
<b>Audit Notes:</b>				
<b>Version:</b>	<b>Phase:</b>	PLAN	<b>Tie On Depth:</b>	0.00
<b>Vertical Section:</b>	<b>Depth From (TVD) (ft)</b>	<b>+N/-S (ft)</b>	<b>+E/-W (ft)</b>	<b>Direction (°)</b>
	0.00	0.00	0.00	273.92

<b>Plan Survey Tool Program</b>	<b>Date</b>	2/11/2018		
<b>Depth From (ft)</b>	<b>Depth To (ft)</b>	<b>Survey (Wellbore)</b>	<b>Tool Name</b>	<b>Remarks</b>
1	0.00	17,186.42	plan1 (Original Hole)	

<b>Plan Sections</b>										
<b>Measured Depth (ft)</b>	<b>Inclination (°)</b>	<b>Azimuth (°)</b>	<b>Vertical Depth (ft)</b>	<b>+N/-S (ft)</b>	<b>+E/-W (ft)</b>	<b>Dogleg Rate (°/100ft)</b>	<b>Build Rate (°/100ft)</b>	<b>Turn Rate (°/100ft)</b>	<b>TFO (°)</b>	<b>Target</b>
0.00	0.00	0.00	0.00	0.00	0.00	0.00	0.00	0.00	0.00	
5,500.00	0.00	0.00	5,500.00	0.00	0.00	0.00	0.00	0.00	0.00	
5,771.36	27.14	51.31	5,761.33	39.42	49.23	10.00	10.00	0.00	51.31	
6,661.11	27.14	51.31	6,553.14	293.11	365.98	0.00	0.00	0.00	0.00	
7,767.46	90.00	270.71	7,290.00	539.52	-167.18	10.00	5.68	-12.71	-137.29	Pickaroon 7-4-4L LP 2
17,186.42	90.00	270.71	7,290.00	657.02	-9,585.40	0.00	0.00	0.00	0.00	Pickaroon 7-4-4L BHL

<b>Database:</b>	DB_Jul2216dt_v14	<b>Local Co-ordinate Reference:</b>	Well Pickaroon 7-04-04L
<b>Company:</b>	Confluence Resources	<b>TVD Reference:</b>	RKB=4986+24 @ 5010.00ft
<b>Project:</b>	Weld County, Colorado	<b>MD Reference:</b>	RKB=4986+24 @ 5010.00ft
<b>Site:</b>	Section 07-T07N-R64W	<b>North Reference:</b>	True
<b>Well:</b>	Pickaroon 7-04-04L	<b>Survey Calculation Method:</b>	Minimum Curvature
<b>Wellbore:</b>	Original Hole		
<b>Design:</b>	plan1		

Planned Survey									
Measured Depth (ft)	Inclination (°)	Azimuth (°)	Vertical Depth (ft)	+N/-S (ft)	+E/-W (ft)	Vertical Section (ft)	Dogleg Rate (°/100ft)	Build Rate (°/100ft)	Turn Rate (°/100ft)
0.00	0.00	0.00	0.00	0.00	0.00	0.00	0.00	0.00	0.00
100.00	0.00	0.00	100.00	0.00	0.00	0.00	0.00	0.00	0.00
200.00	0.00	0.00	200.00	0.00	0.00	0.00	0.00	0.00	0.00
300.00	0.00	0.00	300.00	0.00	0.00	0.00	0.00	0.00	0.00
400.00	0.00	0.00	400.00	0.00	0.00	0.00	0.00	0.00	0.00
500.00	0.00	0.00	500.00	0.00	0.00	0.00	0.00	0.00	0.00
600.00	0.00	0.00	600.00	0.00	0.00	0.00	0.00	0.00	0.00
700.00	0.00	0.00	700.00	0.00	0.00	0.00	0.00	0.00	0.00
800.00	0.00	0.00	800.00	0.00	0.00	0.00	0.00	0.00	0.00
900.00	0.00	0.00	900.00	0.00	0.00	0.00	0.00	0.00	0.00
1,000.00	0.00	0.00	1,000.00	0.00	0.00	0.00	0.00	0.00	0.00
1,100.00	0.00	0.00	1,100.00	0.00	0.00	0.00	0.00	0.00	0.00
1,200.00	0.00	0.00	1,200.00	0.00	0.00	0.00	0.00	0.00	0.00
1,300.00	0.00	0.00	1,300.00	0.00	0.00	0.00	0.00	0.00	0.00
1,400.00	0.00	0.00	1,400.00	0.00	0.00	0.00	0.00	0.00	0.00
1,500.00	0.00	0.00	1,500.00	0.00	0.00	0.00	0.00	0.00	0.00
1,600.00	0.00	0.00	1,600.00	0.00	0.00	0.00	0.00	0.00	0.00
1,700.00	0.00	0.00	1,700.00	0.00	0.00	0.00	0.00	0.00	0.00
1,800.00	0.00	0.00	1,800.00	0.00	0.00	0.00	0.00	0.00	0.00
1,900.00	0.00	0.00	1,900.00	0.00	0.00	0.00	0.00	0.00	0.00
2,000.00	0.00	0.00	2,000.00	0.00	0.00	0.00	0.00	0.00	0.00
2,100.00	0.00	0.00	2,100.00	0.00	0.00	0.00	0.00	0.00	0.00
2,200.00	0.00	0.00	2,200.00	0.00	0.00	0.00	0.00	0.00	0.00
2,300.00	0.00	0.00	2,300.00	0.00	0.00	0.00	0.00	0.00	0.00
2,400.00	0.00	0.00	2,400.00	0.00	0.00	0.00	0.00	0.00	0.00
2,500.00	0.00	0.00	2,500.00	0.00	0.00	0.00	0.00	0.00	0.00
2,600.00	0.00	0.00	2,600.00	0.00	0.00	0.00	0.00	0.00	0.00
2,700.00	0.00	0.00	2,700.00	0.00	0.00	0.00	0.00	0.00	0.00
2,800.00	0.00	0.00	2,800.00	0.00	0.00	0.00	0.00	0.00	0.00
2,900.00	0.00	0.00	2,900.00	0.00	0.00	0.00	0.00	0.00	0.00
3,000.00	0.00	0.00	3,000.00	0.00	0.00	0.00	0.00	0.00	0.00
3,100.00	0.00	0.00	3,100.00	0.00	0.00	0.00	0.00	0.00	0.00
3,200.00	0.00	0.00	3,200.00	0.00	0.00	0.00	0.00	0.00	0.00
3,300.00	0.00	0.00	3,300.00	0.00	0.00	0.00	0.00	0.00	0.00
3,400.00	0.00	0.00	3,400.00	0.00	0.00	0.00	0.00	0.00	0.00
3,500.00	0.00	0.00	3,500.00	0.00	0.00	0.00	0.00	0.00	0.00
3,600.00	0.00	0.00	3,600.00	0.00	0.00	0.00	0.00	0.00	0.00
3,700.00	0.00	0.00	3,700.00	0.00	0.00	0.00	0.00	0.00	0.00
3,800.00	0.00	0.00	3,800.00	0.00	0.00	0.00	0.00	0.00	0.00
3,900.00	0.00	0.00	3,900.00	0.00	0.00	0.00	0.00	0.00	0.00
4,000.00	0.00	0.00	4,000.00	0.00	0.00	0.00	0.00	0.00	0.00
4,100.00	0.00	0.00	4,100.00	0.00	0.00	0.00	0.00	0.00	0.00
4,200.00	0.00	0.00	4,200.00	0.00	0.00	0.00	0.00	0.00	0.00
4,300.00	0.00	0.00	4,300.00	0.00	0.00	0.00	0.00	0.00	0.00
4,400.00	0.00	0.00	4,400.00	0.00	0.00	0.00	0.00	0.00	0.00
4,500.00	0.00	0.00	4,500.00	0.00	0.00	0.00	0.00	0.00	0.00
4,600.00	0.00	0.00	4,600.00	0.00	0.00	0.00	0.00	0.00	0.00
4,700.00	0.00	0.00	4,700.00	0.00	0.00	0.00	0.00	0.00	0.00
4,800.00	0.00	0.00	4,800.00	0.00	0.00	0.00	0.00	0.00	0.00
4,900.00	0.00	0.00	4,900.00	0.00	0.00	0.00	0.00	0.00	0.00
5,000.00	0.00	0.00	5,000.00	0.00	0.00	0.00	0.00	0.00	0.00
5,100.00	0.00	0.00	5,100.00	0.00	0.00	0.00	0.00	0.00	0.00
5,200.00	0.00	0.00	5,200.00	0.00	0.00	0.00	0.00	0.00	0.00
5,300.00	0.00	0.00	5,300.00	0.00	0.00	0.00	0.00	0.00	0.00

<b>Database:</b>	DB_Jul2216dt_v14	<b>Local Co-ordinate Reference:</b>	Well Pickaroon 7-04-04L
<b>Company:</b>	Confluence Resources	<b>TVD Reference:</b>	RKB=4986+24 @ 5010.00ft
<b>Project:</b>	Weld County, Colorado	<b>MD Reference:</b>	RKB=4986+24 @ 5010.00ft
<b>Site:</b>	Section 07-T07N-R64W	<b>North Reference:</b>	True
<b>Well:</b>	Pickaroon 7-04-04L	<b>Survey Calculation Method:</b>	Minimum Curvature
<b>Wellbore:</b>	Original Hole		
<b>Design:</b>	plan1		

Planned Survey									
Measured Depth (ft)	Inclination (°)	Azimuth (°)	Vertical Depth (ft)	+N/-S (ft)	+E/-W (ft)	Vertical Section (ft)	Dogleg Rate (°/100ft)	Build Rate (°/100ft)	Turn Rate (°/100ft)
5,400.00	0.00	0.00	5,400.00	0.00	0.00	0.00	0.00	0.00	0.00
5,500.00	0.00	0.00	5,500.00	0.00	0.00	0.00	0.00	0.00	0.00
<b>KOP Begin 10°/100' build</b>									
5,600.00	10.00	51.31	5,599.49	5.44	6.79	-6.41	10.00	10.00	0.00
5,700.00	20.00	51.31	5,695.96	21.60	26.97	-25.43	10.00	10.00	0.00
5,771.36	27.14	51.31	5,761.33	39.42	49.23	-46.42	10.00	10.00	0.00
<b>Begin 27.14° tangent</b>									
5,800.00	27.14	51.31	5,786.82	47.59	59.42	-56.03	0.00	0.00	0.00
5,900.00	27.14	51.31	5,875.81	76.10	95.02	-89.60	0.00	0.00	0.00
6,000.00	27.14	51.31	5,964.80	104.61	130.62	-123.16	0.00	0.00	0.00
6,100.00	27.14	51.31	6,053.79	133.13	166.22	-156.73	0.00	0.00	0.00
6,200.00	27.14	51.31	6,142.79	161.64	201.82	-190.30	0.00	0.00	0.00
6,300.00	27.14	51.31	6,231.78	190.15	237.43	-223.87	0.00	0.00	0.00
6,400.00	27.14	51.31	6,320.77	218.66	273.03	-257.43	0.00	0.00	0.00
6,500.00	27.14	51.31	6,409.76	247.17	308.63	-291.00	0.00	0.00	0.00
6,600.00	27.14	51.31	6,498.76	275.69	344.23	-324.57	0.00	0.00	0.00
6,661.11	27.14	51.31	6,553.14	293.11	365.98	-345.08	0.00	0.00	0.00
<b>Begin 10°/100' build/turn</b>									
6,700.00	24.41	44.92	6,588.16	304.35	378.58	-356.89	10.00	-7.01	-16.43
6,800.00	19.20	21.64	6,681.15	334.34	399.29	-375.49	10.00	-5.21	-23.28
6,900.00	18.30	350.30	6,776.08	365.19	402.72	-376.81	10.00	-0.90	-31.34
7,000.00	22.24	323.43	6,870.07	395.94	388.77	-360.78	10.00	3.94	-26.87
7,100.00	29.11	306.47	6,960.26	425.68	357.85	-327.90	10.00	6.87	-16.96
7,200.00	37.32	295.97	7,043.92	453.48	310.92	-279.18	10.00	8.21	-10.49
7,300.00	46.16	288.92	7,118.50	478.52	249.39	-216.08	10.00	8.84	-7.06
7,400.00	55.33	283.72	7,181.74	500.02	175.14	-140.53	10.00	9.16	-5.20
7,500.00	64.66	279.58	7,231.71	517.34	90.42	-54.83	10.00	9.34	-4.14
7,600.00	74.10	276.03	7,266.89	529.94	-2.20	38.43	10.00	9.44	-3.54
7,700.00	83.59	272.81	7,286.23	537.45	-99.90	136.41	10.00	9.49	-3.22
7,767.46	90.00	270.71	7,290.00	539.52	-167.18	203.69	10.00	9.51	-3.11
<b>Begin 90.00° lateral</b>									
7,800.00	90.00	270.71	7,290.00	539.92	-199.72	236.17	0.00	0.00	0.00
7,900.00	90.00	270.71	7,290.00	541.17	-299.71	336.01	0.00	0.00	0.00
8,000.00	90.00	270.71	7,290.00	542.42	-399.70	435.86	0.00	0.00	0.00
8,100.00	90.00	270.71	7,290.00	543.67	-499.69	535.70	0.00	0.00	0.00
8,200.00	90.00	270.71	7,290.00	544.91	-599.69	635.55	0.00	0.00	0.00
8,300.00	90.00	270.71	7,290.00	546.16	-699.68	735.39	0.00	0.00	0.00
8,400.00	90.00	270.71	7,290.00	547.41	-799.67	835.23	0.00	0.00	0.00
8,500.00	90.00	270.71	7,290.00	548.66	-899.66	935.08	0.00	0.00	0.00
8,600.00	90.00	270.71	7,290.00	549.90	-999.65	1,034.92	0.00	0.00	0.00
8,700.00	90.00	270.71	7,290.00	551.15	-1,099.65	1,134.76	0.00	0.00	0.00
8,800.00	90.00	270.71	7,290.00	552.40	-1,199.64	1,234.61	0.00	0.00	0.00
8,900.00	90.00	270.71	7,290.00	553.65	-1,299.63	1,334.45	0.00	0.00	0.00
9,000.00	90.00	270.71	7,290.00	554.89	-1,399.62	1,434.29	0.00	0.00	0.00
9,100.00	90.00	270.71	7,290.00	556.14	-1,499.62	1,534.14	0.00	0.00	0.00
9,200.00	90.00	270.71	7,290.00	557.39	-1,599.61	1,633.98	0.00	0.00	0.00
9,300.00	90.00	270.71	7,290.00	558.64	-1,699.60	1,733.82	0.00	0.00	0.00
9,400.00	90.00	270.71	7,290.00	559.88	-1,799.59	1,833.67	0.00	0.00	0.00
9,500.00	90.00	270.71	7,290.00	561.13	-1,899.58	1,933.51	0.00	0.00	0.00
9,600.00	90.00	270.71	7,290.00	562.38	-1,999.58	2,033.35	0.00	0.00	0.00
9,700.00	90.00	270.71	7,290.00	563.63	-2,099.57	2,133.20	0.00	0.00	0.00
9,800.00	90.00	270.71	7,290.00	564.87	-2,199.56	2,233.04	0.00	0.00	0.00
9,900.00	90.00	270.71	7,290.00	566.12	-2,299.55	2,332.88	0.00	0.00	0.00

<b>Database:</b>	DB_Jul2216dt_v14	<b>Local Co-ordinate Reference:</b>	Well Pickaroon 7-04-04L
<b>Company:</b>	Confluence Resources	<b>TVD Reference:</b>	RKB=4986+24 @ 5010.00ft
<b>Project:</b>	Weld County, Colorado	<b>MD Reference:</b>	RKB=4986+24 @ 5010.00ft
<b>Site:</b>	Section 07-T07N-R64W	<b>North Reference:</b>	True
<b>Well:</b>	Pickaroon 7-04-04L	<b>Survey Calculation Method:</b>	Minimum Curvature
<b>Wellbore:</b>	Original Hole		
<b>Design:</b>	plan1		

Planned Survey										
Measured Depth (ft)	Inclination (°)	Azimuth (°)	Vertical Depth (ft)	+N/-S (ft)	+E/-W (ft)	Vertical Section (ft)	Dogleg Rate (°/100ft)	Build Rate (°/100ft)	Turn Rate (°/100ft)	
10,000.00	90.00	270.71	7,290.00	567.37	-2,399.55	2,432.73	0.00	0.00	0.00	
10,100.00	90.00	270.71	7,290.00	568.62	-2,499.54	2,532.57	0.00	0.00	0.00	
10,200.00	90.00	270.71	7,290.00	569.86	-2,599.53	2,632.41	0.00	0.00	0.00	
10,300.00	90.00	270.71	7,290.00	571.11	-2,699.52	2,732.26	0.00	0.00	0.00	
10,400.00	90.00	270.71	7,290.00	572.36	-2,799.51	2,832.10	0.00	0.00	0.00	
10,500.00	90.00	270.71	7,290.00	573.61	-2,899.51	2,931.94	0.00	0.00	0.00	
10,600.00	90.00	270.71	7,290.00	574.85	-2,999.50	3,031.79	0.00	0.00	0.00	
10,700.00	90.00	270.71	7,290.00	576.10	-3,099.49	3,131.63	0.00	0.00	0.00	
10,800.00	90.00	270.71	7,290.00	577.35	-3,199.48	3,231.47	0.00	0.00	0.00	
10,900.00	90.00	270.71	7,290.00	578.60	-3,299.48	3,331.32	0.00	0.00	0.00	
11,000.00	90.00	270.71	7,290.00	579.84	-3,399.47	3,431.16	0.00	0.00	0.00	
11,100.00	90.00	270.71	7,290.00	581.09	-3,499.46	3,531.01	0.00	0.00	0.00	
11,200.00	90.00	270.71	7,290.00	582.34	-3,599.45	3,630.85	0.00	0.00	0.00	
11,300.00	90.00	270.71	7,290.00	583.59	-3,699.44	3,730.69	0.00	0.00	0.00	
11,400.00	90.00	270.71	7,290.00	584.83	-3,799.44	3,830.54	0.00	0.00	0.00	
11,500.00	90.00	270.71	7,290.00	586.08	-3,899.43	3,930.38	0.00	0.00	0.00	
11,600.00	90.00	270.71	7,290.00	587.33	-3,999.42	4,030.22	0.00	0.00	0.00	
11,700.00	90.00	270.71	7,290.00	588.58	-4,099.41	4,130.07	0.00	0.00	0.00	
11,800.00	90.00	270.71	7,290.00	589.82	-4,199.41	4,229.91	0.00	0.00	0.00	
11,900.00	90.00	270.71	7,290.00	591.07	-4,299.40	4,329.75	0.00	0.00	0.00	
12,000.00	90.00	270.71	7,290.00	592.32	-4,399.39	4,429.60	0.00	0.00	0.00	
12,100.00	90.00	270.71	7,290.00	593.57	-4,499.38	4,529.44	0.00	0.00	0.00	
12,200.00	90.00	270.71	7,290.00	594.81	-4,599.37	4,629.28	0.00	0.00	0.00	
12,300.00	90.00	270.71	7,290.00	596.06	-4,699.37	4,729.13	0.00	0.00	0.00	
12,400.00	90.00	270.71	7,290.00	597.31	-4,799.36	4,828.97	0.00	0.00	0.00	
12,500.00	90.00	270.71	7,290.00	598.56	-4,899.35	4,928.81	0.00	0.00	0.00	
12,600.00	90.00	270.71	7,290.00	599.80	-4,999.34	5,028.66	0.00	0.00	0.00	
12,700.00	90.00	270.71	7,290.00	601.05	-5,099.34	5,128.50	0.00	0.00	0.00	
12,800.00	90.00	270.71	7,290.00	602.30	-5,199.33	5,228.34	0.00	0.00	0.00	
12,900.00	90.00	270.71	7,290.00	603.55	-5,299.32	5,328.19	0.00	0.00	0.00	
13,000.00	90.00	270.71	7,290.00	604.79	-5,399.31	5,428.03	0.00	0.00	0.00	
13,100.00	90.00	270.71	7,290.00	606.04	-5,499.30	5,527.87	0.00	0.00	0.00	
13,200.00	90.00	270.71	7,290.00	607.29	-5,599.30	5,627.72	0.00	0.00	0.00	
13,300.00	90.00	270.71	7,290.00	608.54	-5,699.29	5,727.56	0.00	0.00	0.00	
13,400.00	90.00	270.71	7,290.00	609.78	-5,799.28	5,827.40	0.00	0.00	0.00	
13,500.00	90.00	270.71	7,290.00	611.03	-5,899.27	5,927.25	0.00	0.00	0.00	
13,600.00	90.00	270.71	7,290.00	612.28	-5,999.27	6,027.09	0.00	0.00	0.00	
13,700.00	90.00	270.71	7,290.00	613.53	-6,099.26	6,126.94	0.00	0.00	0.00	
13,800.00	90.00	270.71	7,290.00	614.77	-6,199.25	6,226.78	0.00	0.00	0.00	
13,900.00	90.00	270.71	7,290.00	616.02	-6,299.24	6,326.62	0.00	0.00	0.00	
14,000.00	90.00	270.71	7,290.00	617.27	-6,399.23	6,426.47	0.00	0.00	0.00	
14,100.00	90.00	270.71	7,290.00	618.52	-6,499.23	6,526.31	0.00	0.00	0.00	
14,200.00	90.00	270.71	7,290.00	619.76	-6,599.22	6,626.15	0.00	0.00	0.00	
14,300.00	90.00	270.71	7,290.00	621.01	-6,699.21	6,726.00	0.00	0.00	0.00	
14,400.00	90.00	270.71	7,290.00	622.26	-6,799.20	6,825.84	0.00	0.00	0.00	
14,500.00	90.00	270.71	7,290.00	623.51	-6,899.20	6,925.68	0.00	0.00	0.00	
14,600.00	90.00	270.71	7,290.00	624.75	-6,999.19	7,025.53	0.00	0.00	0.00	
14,700.00	90.00	270.71	7,290.00	626.00	-7,099.18	7,125.37	0.00	0.00	0.00	
14,800.00	90.00	270.71	7,290.00	627.25	-7,199.17	7,225.21	0.00	0.00	0.00	
14,900.00	90.00	270.71	7,290.00	628.50	-7,299.16	7,325.06	0.00	0.00	0.00	
15,000.00	90.00	270.71	7,290.00	629.74	-7,399.16	7,424.90	0.00	0.00	0.00	
15,100.00	90.00	270.71	7,290.00	630.99	-7,499.15	7,524.74	0.00	0.00	0.00	
15,200.00	90.00	270.71	7,290.00	632.24	-7,599.14	7,624.59	0.00	0.00	0.00	
15,300.00	90.00	270.71	7,290.00	633.49	-7,699.13	7,724.43	0.00	0.00	0.00	

<b>Database:</b>	DB_Jul2216dt_v14	<b>Local Co-ordinate Reference:</b>	Well Pickaroon 7-04-04L
<b>Company:</b>	Confluence Resources	<b>TVD Reference:</b>	RKB=4986+24 @ 5010.00ft
<b>Project:</b>	Weld County, Colorado	<b>MD Reference:</b>	RKB=4986+24 @ 5010.00ft
<b>Site:</b>	Section 07-T07N-R64W	<b>North Reference:</b>	True
<b>Well:</b>	Pickaroon 7-04-04L	<b>Survey Calculation Method:</b>	Minimum Curvature
<b>Wellbore:</b>	Original Hole		
<b>Design:</b>	plan1		

Planned Survey										
Measured Depth (ft)	Inclination (°)	Azimuth (°)	Vertical Depth (ft)	+N/-S (ft)	+E/-W (ft)	Vertical Section (ft)	Dogleg Rate (°/100ft)	Build Rate (°/100ft)	Turn Rate (°/100ft)	
15,400.00	90.00	270.71	7,290.00	634.73	-7,799.13	7,824.27	0.00	0.00	0.00	
15,500.00	90.00	270.71	7,290.00	635.98	-7,899.12	7,924.12	0.00	0.00	0.00	
15,600.00	90.00	270.71	7,290.00	637.23	-7,999.11	8,023.96	0.00	0.00	0.00	
15,700.00	90.00	270.71	7,290.00	638.48	-8,099.10	8,123.80	0.00	0.00	0.00	
15,800.00	90.00	270.71	7,290.00	639.72	-8,199.09	8,223.65	0.00	0.00	0.00	
15,900.00	90.00	270.71	7,290.00	640.97	-8,299.09	8,323.49	0.00	0.00	0.00	
16,000.00	90.00	270.71	7,290.00	642.22	-8,399.08	8,423.33	0.00	0.00	0.00	
16,100.00	90.00	270.71	7,290.00	643.47	-8,499.07	8,523.18	0.00	0.00	0.00	
16,200.00	90.00	270.71	7,290.00	644.71	-8,599.06	8,623.02	0.00	0.00	0.00	
16,300.00	90.00	270.71	7,290.00	645.96	-8,699.06	8,722.87	0.00	0.00	0.00	
16,400.00	90.00	270.71	7,290.00	647.21	-8,799.05	8,822.71	0.00	0.00	0.00	
16,500.00	90.00	270.71	7,290.00	648.46	-8,899.04	8,922.55	0.00	0.00	0.00	
16,600.00	90.00	270.71	7,290.00	649.70	-8,999.03	9,022.40	0.00	0.00	0.00	
16,700.00	90.00	270.71	7,290.00	650.95	-9,099.02	9,122.24	0.00	0.00	0.00	
16,800.00	90.00	270.71	7,290.00	652.20	-9,199.02	9,222.08	0.00	0.00	0.00	
16,900.00	90.00	270.71	7,290.00	653.45	-9,299.01	9,321.93	0.00	0.00	0.00	
17,000.00	90.00	270.71	7,290.00	654.69	-9,399.00	9,421.77	0.00	0.00	0.00	
17,100.00	90.00	270.71	7,290.00	655.94	-9,498.99	9,521.61	0.00	0.00	0.00	
17,186.42	90.00	270.71	7,290.00	657.02	-9,585.40	9,607.89	0.00	0.00	0.00	
<b>PBHL/TD 17186.42 MD/7290.00 TVD</b>										

Design Targets										
Target Name - hit/miss target - Shape	Dip Angle (°)	Dip Dir. (°)	TVD (ft)	+N/-S (ft)	+E/-W (ft)	Northing (usft)	Easting (usft)	Latitude	Longitude	
Pickaroon 7-4-4L BHL 2' - plan hits target center - Point	0.00	0.00	7,290.00	657.02	-9,585.40	14,740,521.42	1,746,358.33	40.58644296	-104.61842189	
Pickaroon 7-4-4L LP 21' - plan hits target center - Point	0.00	0.00	7,290.00	539.52	-167.18	14,740,448.42	1,755,776.98	40.58612547	-104.58450008	

Plan Annotations					
Measured Depth (ft)	Vertical Depth (ft)	Local Coordinates		Comment	
		+N/-S (ft)	+E/-W (ft)		
5,500.00	5,500.00	0.00	0.00	KOP Begin 10°/100' build	
5,771.36	5,761.33	39.42	49.23	Begin 27.14° tangent	
6,661.11	6,553.14	293.11	365.98	Begin 10°/100' build/turn	
7,767.46	7,290.00	539.52	-167.18	Begin 90.00° lateral	
17,186.42	7,290.00	657.02	-9,585.40	PBHL/TD 17186.42 MD/7290.00 TVD	

<b>Database:</b>	DB_Jul2216dt_v14	<b>Local Co-ordinate Reference:</b>	Well Pickaroon 7-04-04L
<b>Company:</b>	Confluence Resources	<b>TVD Reference:</b>	RKB=4986+24 @ 5010.00ft
<b>Project:</b>	Weld County, Colorado	<b>MD Reference:</b>	RKB=4986+24 @ 5010.00ft
<b>Site:</b>	Section 07-T07N-R64W	<b>North Reference:</b>	True
<b>Well:</b>	Pickaroon 7-04-04L	<b>Survey Calculation Method:</b>	Minimum Curvature
<b>Wellbore:</b>	Original Hole		
<b>Design:</b>	plan1		

<b>Project</b>	Weld County, Colorado		
<b>Map System:</b>	Universal Transverse Mercator (US Survey Feet)	<b>System Datum:</b>	Mean Sea Level
<b>Geo Datum:</b>	NAD83 Colorado - HARN		
<b>Map Zone:</b>	Zone 13N (108 W to 102 W)		

<b>Site</b>	Section 07-T07N-R64W				
<b>Site Position:</b>	<b>Northing:</b>	14,740,905.93 usft	<b>Latitude:</b>	40.58737934	
<b>From:</b> Map	<b>Easting:</b>	1,755,960.51 usft	<b>Longitude:</b>	-104.58383128	
<b>Position Uncertainty:</b>	0.00 ft	<b>Slot Radius:</b>	13-3/16 "	<b>Grid Convergence:</b>	0.27 °

<b>Well</b>	Pickaroon 7-04-04L, Surf loc: 1652 FSL 302 FEL Section 07-T07N-R64W					
<b>Well Position</b>	<b>+N/-S</b>	0.00 ft	<b>Northing:</b>	14,739,909.70 usft	<b>Latitude:</b>	40.58464403
	<b>+E/-W</b>	0.00 ft	<b>Easting:</b>	1,755,946.71 usft	<b>Longitude:</b>	-104.58389794
<b>Position Uncertainty</b>	0.00 ft	<b>Wellhead Elevation:</b>		<b>Ground Level:</b>	4,986.00 ft	

<b>Wellbore</b>	Original Hole				
<b>Magnetics</b>	<b>Model Name</b>	<b>Sample Date</b>	<b>Declination (°)</b>	<b>Dip Angle (°)</b>	<b>Field Strength (nT)</b>
	HDGM	2/11/2018	7.98	66.98	52,351.80000000

<b>Design</b>	plan1			
<b>Audit Notes:</b>				
<b>Version:</b>	<b>Phase:</b>	PLAN	<b>Tie On Depth:</b>	0.00
<b>Vertical Section:</b>	<b>Depth From (TVD) (ft)</b>	<b>+N/-S (ft)</b>	<b>+E/-W (ft)</b>	<b>Direction (°)</b>
	0.00	0.00	0.00	273.92

<b>Plan Survey Tool Program</b>	<b>Date</b>	2/11/2018		
<b>Depth From (ft)</b>	<b>Depth To (ft)</b>	<b>Survey (Wellbore)</b>	<b>Tool Name</b>	<b>Remarks</b>
1	0.00	17,186.42 plan1 (Original Hole)		

<b>Plan Sections</b>										
Measured Depth (ft)	Inclination (°)	Azimuth (°)	Vertical Depth (ft)	+N/-S (ft)	+E/-W (ft)	Dogleg Rate (°/100ft)	Build Rate (°/100ft)	Turn Rate (°/100ft)	TFO (°)	Target
0.00	0.00	0.00	0.00	0.00	0.00	0.00	0.00	0.00	0.00	
5,500.00	0.00	0.00	5,500.00	0.00	0.00	0.00	0.00	0.00	0.00	
5,771.36	27.14	51.31	5,761.33	39.42	49.23	10.00	10.00	0.00	51.31	
6,661.11	27.14	51.31	6,553.14	293.11	365.98	0.00	0.00	0.00	0.00	
7,767.46	90.00	270.71	7,290.00	539.52	-167.18	10.00	5.68	-12.71	-137.29	Pickaroon 7-4-4L LP 2
17,186.42	90.00	270.71	7,290.00	657.02	-9,585.40	0.00	0.00	0.00	0.00	Pickaroon 7-4-4L BHL

<b>Database:</b>	DB_Jul2216dt_v14	<b>Local Co-ordinate Reference:</b>	Well Pickaroon 7-04-04L
<b>Company:</b>	Confluence Resources	<b>TVD Reference:</b>	RKB=4986+24 @ 5010.00ft
<b>Project:</b>	Weld County, Colorado	<b>MD Reference:</b>	RKB=4986+24 @ 5010.00ft
<b>Site:</b>	Section 07-T07N-R64W	<b>North Reference:</b>	True
<b>Well:</b>	Pickaroon 7-04-04L	<b>Survey Calculation Method:</b>	Minimum Curvature
<b>Wellbore:</b>	Original Hole		
<b>Design:</b>	plan1		

Planned Survey										
Measured Depth (ft)	Inclination (°)	Azimuth (°)	Vertical Depth (ft)	+N/-S (ft)	+E/-W (ft)	Map Northing (usft)	Map Easting (usft)	Latitude	Longitude	
0.00	0.00	0.00	0.00	0.00	0.00	14,739,909.70	1,755,946.71	40.58464403	-104.58389794	
100.00	0.00	0.00	100.00	0.00	0.00	14,739,909.70	1,755,946.71	40.58464403	-104.58389794	
200.00	0.00	0.00	200.00	0.00	0.00	14,739,909.70	1,755,946.71	40.58464403	-104.58389794	
300.00	0.00	0.00	300.00	0.00	0.00	14,739,909.70	1,755,946.71	40.58464403	-104.58389794	
400.00	0.00	0.00	400.00	0.00	0.00	14,739,909.70	1,755,946.71	40.58464403	-104.58389794	
500.00	0.00	0.00	500.00	0.00	0.00	14,739,909.70	1,755,946.71	40.58464403	-104.58389794	
600.00	0.00	0.00	600.00	0.00	0.00	14,739,909.70	1,755,946.71	40.58464403	-104.58389794	
700.00	0.00	0.00	700.00	0.00	0.00	14,739,909.70	1,755,946.71	40.58464403	-104.58389794	
800.00	0.00	0.00	800.00	0.00	0.00	14,739,909.70	1,755,946.71	40.58464403	-104.58389794	
900.00	0.00	0.00	900.00	0.00	0.00	14,739,909.70	1,755,946.71	40.58464403	-104.58389794	
1,000.00	0.00	0.00	1,000.00	0.00	0.00	14,739,909.70	1,755,946.71	40.58464403	-104.58389794	
1,100.00	0.00	0.00	1,100.00	0.00	0.00	14,739,909.70	1,755,946.71	40.58464403	-104.58389794	
1,200.00	0.00	0.00	1,200.00	0.00	0.00	14,739,909.70	1,755,946.71	40.58464403	-104.58389794	
1,300.00	0.00	0.00	1,300.00	0.00	0.00	14,739,909.70	1,755,946.71	40.58464403	-104.58389794	
1,400.00	0.00	0.00	1,400.00	0.00	0.00	14,739,909.70	1,755,946.71	40.58464403	-104.58389794	
1,500.00	0.00	0.00	1,500.00	0.00	0.00	14,739,909.70	1,755,946.71	40.58464403	-104.58389794	
1,600.00	0.00	0.00	1,600.00	0.00	0.00	14,739,909.70	1,755,946.71	40.58464403	-104.58389794	
1,700.00	0.00	0.00	1,700.00	0.00	0.00	14,739,909.70	1,755,946.71	40.58464403	-104.58389794	
1,800.00	0.00	0.00	1,800.00	0.00	0.00	14,739,909.70	1,755,946.71	40.58464403	-104.58389794	
1,900.00	0.00	0.00	1,900.00	0.00	0.00	14,739,909.70	1,755,946.71	40.58464403	-104.58389794	
2,000.00	0.00	0.00	2,000.00	0.00	0.00	14,739,909.70	1,755,946.71	40.58464403	-104.58389794	
2,100.00	0.00	0.00	2,100.00	0.00	0.00	14,739,909.70	1,755,946.71	40.58464403	-104.58389794	
2,200.00	0.00	0.00	2,200.00	0.00	0.00	14,739,909.70	1,755,946.71	40.58464403	-104.58389794	
2,300.00	0.00	0.00	2,300.00	0.00	0.00	14,739,909.70	1,755,946.71	40.58464403	-104.58389794	
2,400.00	0.00	0.00	2,400.00	0.00	0.00	14,739,909.70	1,755,946.71	40.58464403	-104.58389794	
2,500.00	0.00	0.00	2,500.00	0.00	0.00	14,739,909.70	1,755,946.71	40.58464403	-104.58389794	
2,600.00	0.00	0.00	2,600.00	0.00	0.00	14,739,909.70	1,755,946.71	40.58464403	-104.58389794	
2,700.00	0.00	0.00	2,700.00	0.00	0.00	14,739,909.70	1,755,946.71	40.58464403	-104.58389794	
2,800.00	0.00	0.00	2,800.00	0.00	0.00	14,739,909.70	1,755,946.71	40.58464403	-104.58389794	
2,900.00	0.00	0.00	2,900.00	0.00	0.00	14,739,909.70	1,755,946.71	40.58464403	-104.58389794	
3,000.00	0.00	0.00	3,000.00	0.00	0.00	14,739,909.70	1,755,946.71	40.58464403	-104.58389794	
3,100.00	0.00	0.00	3,100.00	0.00	0.00	14,739,909.70	1,755,946.71	40.58464403	-104.58389794	
3,200.00	0.00	0.00	3,200.00	0.00	0.00	14,739,909.70	1,755,946.71	40.58464403	-104.58389794	
3,300.00	0.00	0.00	3,300.00	0.00	0.00	14,739,909.70	1,755,946.71	40.58464403	-104.58389794	
3,400.00	0.00	0.00	3,400.00	0.00	0.00	14,739,909.70	1,755,946.71	40.58464403	-104.58389794	
3,500.00	0.00	0.00	3,500.00	0.00	0.00	14,739,909.70	1,755,946.71	40.58464403	-104.58389794	
3,600.00	0.00	0.00	3,600.00	0.00	0.00	14,739,909.70	1,755,946.71	40.58464403	-104.58389794	
3,700.00	0.00	0.00	3,700.00	0.00	0.00	14,739,909.70	1,755,946.71	40.58464403	-104.58389794	
3,800.00	0.00	0.00	3,800.00	0.00	0.00	14,739,909.70	1,755,946.71	40.58464403	-104.58389794	
3,900.00	0.00	0.00	3,900.00	0.00	0.00	14,739,909.70	1,755,946.71	40.58464403	-104.58389794	
4,000.00	0.00	0.00	4,000.00	0.00	0.00	14,739,909.70	1,755,946.71	40.58464403	-104.58389794	
4,100.00	0.00	0.00	4,100.00	0.00	0.00	14,739,909.70	1,755,946.71	40.58464403	-104.58389794	
4,200.00	0.00	0.00	4,200.00	0.00	0.00	14,739,909.70	1,755,946.71	40.58464403	-104.58389794	
4,300.00	0.00	0.00	4,300.00	0.00	0.00	14,739,909.70	1,755,946.71	40.58464403	-104.58389794	
4,400.00	0.00	0.00	4,400.00	0.00	0.00	14,739,909.70	1,755,946.71	40.58464403	-104.58389794	
4,500.00	0.00	0.00	4,500.00	0.00	0.00	14,739,909.70	1,755,946.71	40.58464403	-104.58389794	
4,600.00	0.00	0.00	4,600.00	0.00	0.00	14,739,909.70	1,755,946.71	40.58464403	-104.58389794	
4,700.00	0.00	0.00	4,700.00	0.00	0.00	14,739,909.70	1,755,946.71	40.58464403	-104.58389794	
4,800.00	0.00	0.00	4,800.00	0.00	0.00	14,739,909.70	1,755,946.71	40.58464403	-104.58389794	
4,900.00	0.00	0.00	4,900.00	0.00	0.00	14,739,909.70	1,755,946.71	40.58464403	-104.58389794	
5,000.00	0.00	0.00	5,000.00	0.00	0.00	14,739,909.70	1,755,946.71	40.58464403	-104.58389794	
5,100.00	0.00	0.00	5,100.00	0.00	0.00	14,739,909.70	1,755,946.71	40.58464403	-104.58389794	
5,200.00	0.00	0.00	5,200.00	0.00	0.00	14,739,909.70	1,755,946.71	40.58464403	-104.58389794	
5,300.00	0.00	0.00	5,300.00	0.00	0.00	14,739,909.70	1,755,946.71	40.58464403	-104.58389794	
5,400.00	0.00	0.00	5,400.00	0.00	0.00	14,739,909.70	1,755,946.71	40.58464403	-104.58389794	

<b>Database:</b>	DB_Jul2216dt_v14	<b>Local Co-ordinate Reference:</b>	Well Pickaroon 7-04-04L
<b>Company:</b>	Confluence Resources	<b>TVD Reference:</b>	RKB=4986+24 @ 5010.00ft
<b>Project:</b>	Weld County, Colorado	<b>MD Reference:</b>	RKB=4986+24 @ 5010.00ft
<b>Site:</b>	Section 07-T07N-R64W	<b>North Reference:</b>	True
<b>Well:</b>	Pickaroon 7-04-04L	<b>Survey Calculation Method:</b>	Minimum Curvature
<b>Wellbore:</b>	Original Hole		
<b>Design:</b>	plan1		

Planned Survey										
Measured Depth (ft)	Inclination (°)	Azimuth (°)	Vertical Depth (ft)	+N/-S (ft)	+E/-W (ft)	Map Northing (usft)	Map Easting (usft)	Latitude	Longitude	
5,500.00	0.00	0.00	5,500.00	0.00	0.00	14,739,909.70	1,755,946.71	40.58464403	-104.58389794	
<b>KOP Begin 10°/100' build</b>										
5,600.00	10.00	51.31	5,599.49	5.44	6.79	14,739,915.17	1,755,953.48	40.58465897	-104.58387347	
5,700.00	20.00	51.31	5,695.96	21.60	26.97	14,739,931.43	1,755,973.58	40.58470334	-104.58380080	
5,771.36	27.14	51.31	5,761.33	39.42	49.23	14,739,949.36	1,755,995.75	40.58475229	-104.58372064	
<b>Begin 27.14° tangent</b>										
5,800.00	27.14	51.31	5,786.82	47.59	59.42	14,739,957.57	1,756,005.91	40.58477471	-104.58368392	
5,900.00	27.14	51.31	5,875.81	76.10	95.02	14,739,986.25	1,756,041.37	40.58485300	-104.58355570	
6,000.00	27.14	51.31	5,964.80	104.61	130.62	14,740,014.93	1,756,076.84	40.58493129	-104.58342748	
6,100.00	27.14	51.31	6,053.79	133.13	166.22	14,740,043.61	1,756,112.30	40.58500957	-104.58329926	
6,200.00	27.14	51.31	6,142.79	161.64	201.82	14,740,072.29	1,756,147.77	40.58508786	-104.58317104	
6,300.00	27.14	51.31	6,231.78	190.15	237.43	14,740,100.97	1,756,183.23	40.58516615	-104.58304282	
6,400.00	27.14	51.31	6,320.77	218.66	273.03	14,740,129.65	1,756,218.70	40.58524444	-104.58291459	
6,500.00	27.14	51.31	6,409.76	247.17	308.63	14,740,158.33	1,756,254.16	40.58532273	-104.58278637	
6,600.00	27.14	51.31	6,498.76	275.69	344.23	14,740,187.01	1,756,289.63	40.58540102	-104.58265815	
6,661.11	27.14	51.31	6,553.14	293.11	365.98	14,740,204.53	1,756,311.30	40.58544886	-104.58257979	
<b>Begin 10°/100' build/turn</b>										
6,700.00	24.41	44.92	6,588.16	304.35	378.58	14,740,215.83	1,756,323.85	40.58547972	-104.58253441	
6,800.00	19.20	21.64	6,681.15	334.34	399.29	14,740,245.93	1,756,344.42	40.58556209	-104.58245982	
6,900.00	18.30	350.30	6,776.08	365.19	402.72	14,740,276.79	1,756,347.70	40.58564678	-104.58244747	
7,000.00	22.24	323.43	6,870.07	395.94	388.77	14,740,307.48	1,756,333.60	40.58573123	-104.58249773	
7,100.00	29.11	306.47	6,960.26	425.68	357.85	14,740,337.06	1,756,302.54	40.58581288	-104.58260907	
7,200.00	37.32	295.97	7,043.92	453.48	310.92	14,740,364.65	1,756,255.48	40.58588923	-104.58277811	
7,300.00	46.16	288.92	7,118.50	478.52	249.39	14,740,389.39	1,756,193.83	40.58595797	-104.58299972	
7,400.00	55.33	283.72	7,181.74	500.02	175.14	14,740,410.54	1,756,119.48	40.58601702	-104.58326715	
7,500.00	64.66	279.58	7,231.71	517.34	90.42	14,740,427.46	1,756,034.68	40.58606457	-104.58357229	
7,600.00	74.10	276.03	7,266.89	529.94	-2.20	14,740,439.62	1,755,942.01	40.58609918	-104.58390586	
7,700.00	83.59	272.81	7,286.23	537.45	-99.90	14,740,446.67	1,755,844.28	40.58611980	-104.58425773	
7,767.46	90.00	270.71	7,290.00	539.52	-167.18	14,740,448.42	1,755,776.98	40.58612547	-104.58450008	
<b>Begin 90.00° lateral</b>										
7,800.00	90.00	270.71	7,290.00	539.92	-199.72	14,740,448.67	1,755,744.44	40.58612658	-104.58461726	
7,900.00	90.00	270.71	7,290.00	541.17	-299.71	14,740,449.45	1,755,644.45	40.58613001	-104.58497740	
8,000.00	90.00	270.71	7,290.00	542.42	-399.70	14,740,450.22	1,755,544.45	40.58613343	-104.58533754	
8,100.00	90.00	270.71	7,290.00	543.67	-499.69	14,740,451.00	1,755,444.45	40.58613685	-104.58569769	
8,200.00	90.00	270.71	7,290.00	544.91	-599.69	14,740,451.77	1,755,344.46	40.58614027	-104.58605783	
8,300.00	90.00	270.71	7,290.00	546.16	-699.68	14,740,452.55	1,755,244.46	40.58614369	-104.58641797	
8,400.00	90.00	270.71	7,290.00	547.41	-799.67	14,740,453.32	1,755,144.46	40.58614710	-104.58677811	
8,500.00	90.00	270.71	7,290.00	548.66	-899.66	14,740,454.10	1,755,044.47	40.58615052	-104.58713825	
8,600.00	90.00	270.71	7,290.00	549.90	-999.65	14,740,454.87	1,754,944.47	40.58615393	-104.58749840	
8,700.00	90.00	270.71	7,290.00	551.15	-1,099.65	14,740,455.65	1,754,844.47	40.58615735	-104.58785854	
8,800.00	90.00	270.71	7,290.00	552.40	-1,199.64	14,740,456.42	1,754,744.48	40.58616076	-104.58821868	
8,900.00	90.00	270.71	7,290.00	553.65	-1,299.63	14,740,457.20	1,754,644.48	40.58616417	-104.58857882	
9,000.00	90.00	270.71	7,290.00	554.89	-1,399.62	14,740,457.97	1,754,544.48	40.58616758	-104.58893897	
9,100.00	90.00	270.71	7,290.00	556.14	-1,499.62	14,740,458.75	1,754,444.49	40.58617099	-104.58929911	
9,200.00	90.00	270.71	7,290.00	557.39	-1,599.61	14,740,459.52	1,754,344.49	40.58617440	-104.58965925	
9,300.00	90.00	270.71	7,290.00	558.64	-1,699.60	14,740,460.30	1,754,244.49	40.58617781	-104.59001940	
9,400.00	90.00	270.71	7,290.00	559.88	-1,799.59	14,740,461.07	1,754,144.49	40.58618121	-104.59037954	
9,500.00	90.00	270.71	7,290.00	561.13	-1,899.58	14,740,461.85	1,754,044.50	40.58618462	-104.59073968	
9,600.00	90.00	270.71	7,290.00	562.38	-1,999.58	14,740,462.62	1,753,944.50	40.58618802	-104.59109982	
9,700.00	90.00	270.71	7,290.00	563.63	-2,099.57	14,740,463.40	1,753,844.50	40.58619142	-104.59145997	
9,800.00	90.00	270.71	7,290.00	564.87	-2,199.56	14,740,464.17	1,753,744.51	40.58619482	-104.59182011	
9,900.00	90.00	270.71	7,290.00	566.12	-2,299.55	14,740,464.95	1,753,644.51	40.58619822	-104.59218025	
10,000.00	90.00	270.71	7,290.00	567.37	-2,399.55	14,740,465.72	1,753,544.51	40.58620162	-104.59254040	
10,100.00	90.00	270.71	7,290.00	568.62	-2,499.54	14,740,466.50	1,753,444.52	40.58620502	-104.59290054	

<b>Database:</b>	DB_Jul2216dt_v14	<b>Local Co-ordinate Reference:</b>	Well Pickaroon 7-04-04L
<b>Company:</b>	Confluence Resources	<b>TVD Reference:</b>	RKB=4986+24 @ 5010.00ft
<b>Project:</b>	Weld County, Colorado	<b>MD Reference:</b>	RKB=4986+24 @ 5010.00ft
<b>Site:</b>	Section 07-T07N-R64W	<b>North Reference:</b>	True
<b>Well:</b>	Pickaroon 7-04-04L	<b>Survey Calculation Method:</b>	Minimum Curvature
<b>Wellbore:</b>	Original Hole		
<b>Design:</b>	plan1		

Planned Survey										
Measured Depth (ft)	Inclination (°)	Azimuth (°)	Vertical Depth (ft)	+N/-S (ft)	+E/-W (ft)	Map Northing (usft)	Map Easting (usft)	Latitude	Longitude	
10,200.00	90.00	270.71	7,290.00	569.86	-2,599.53	14,740,467.27	1,753,344.52	40.58620842	-104.59326068	
10,300.00	90.00	270.71	7,290.00	571.11	-2,699.52	14,740,468.05	1,753,244.52	40.58621181	-104.59362083	
10,400.00	90.00	270.71	7,290.00	572.36	-2,799.51	14,740,468.82	1,753,144.53	40.58621521	-104.59398097	
10,500.00	90.00	270.71	7,290.00	573.61	-2,899.51	14,740,469.60	1,753,044.53	40.58621860	-104.59434111	
10,600.00	90.00	270.71	7,290.00	574.85	-2,999.50	14,740,470.37	1,752,944.53	40.58622199	-104.59470126	
10,700.00	90.00	270.71	7,290.00	576.10	-3,099.49	14,740,471.15	1,752,844.54	40.58622539	-104.59506140	
10,800.00	90.00	270.71	7,290.00	577.35	-3,199.48	14,740,471.92	1,752,744.54	40.58622878	-104.59542154	
10,900.00	90.00	270.71	7,290.00	578.60	-3,299.48	14,740,472.70	1,752,644.54	40.58623216	-104.59578169	
11,000.00	90.00	270.71	7,290.00	579.84	-3,399.47	14,740,473.47	1,752,544.55	40.58623555	-104.59614183	
11,100.00	90.00	270.71	7,290.00	581.09	-3,499.46	14,740,474.25	1,752,444.55	40.58623894	-104.59650197	
11,200.00	90.00	270.71	7,290.00	582.34	-3,599.45	14,740,475.02	1,752,344.55	40.58624233	-104.59686212	
11,300.00	90.00	270.71	7,290.00	583.59	-3,699.44	14,740,475.80	1,752,244.56	40.58624571	-104.59722226	
11,400.00	90.00	270.71	7,290.00	584.83	-3,799.44	14,740,476.57	1,752,144.56	40.58624909	-104.59758240	
11,500.00	90.00	270.71	7,290.00	586.08	-3,899.43	14,740,477.35	1,752,044.56	40.58625248	-104.59794255	
11,600.00	90.00	270.71	7,290.00	587.33	-3,999.42	14,740,478.12	1,751,944.57	40.58625586	-104.59830269	
11,700.00	90.00	270.71	7,290.00	588.58	-4,099.41	14,740,478.90	1,751,844.57	40.58625924	-104.59866284	
11,800.00	90.00	270.71	7,290.00	589.82	-4,199.41	14,740,479.67	1,751,744.57	40.58626262	-104.59902298	
11,900.00	90.00	270.71	7,290.00	591.07	-4,299.40	14,740,480.45	1,751,644.58	40.58626599	-104.59938312	
12,000.00	90.00	270.71	7,290.00	592.32	-4,399.39	14,740,481.22	1,751,544.58	40.58626937	-104.59974327	
12,100.00	90.00	270.71	7,290.00	593.57	-4,499.38	14,740,482.00	1,751,444.58	40.58627275	-104.60010341	
12,200.00	90.00	270.71	7,290.00	594.81	-4,599.37	14,740,482.77	1,751,344.58	40.58627612	-104.60046356	
12,300.00	90.00	270.71	7,290.00	596.06	-4,699.37	14,740,483.55	1,751,244.59	40.58627949	-104.60082370	
12,400.00	90.00	270.71	7,290.00	597.31	-4,799.36	14,740,484.32	1,751,144.59	40.58628286	-104.60118384	
12,500.00	90.00	270.71	7,290.00	598.56	-4,899.35	14,740,485.10	1,751,044.59	40.58628624	-104.60154399	
12,600.00	90.00	270.71	7,290.00	599.80	-4,999.34	14,740,485.87	1,750,944.60	40.58628961	-104.60190413	
12,700.00	90.00	270.71	7,290.00	601.05	-5,099.34	14,740,486.65	1,750,844.60	40.58629297	-104.60226428	
12,800.00	90.00	270.71	7,290.00	602.30	-5,199.33	14,740,487.42	1,750,744.60	40.58629634	-104.60262442	
12,900.00	90.00	270.71	7,290.00	603.55	-5,299.32	14,740,488.20	1,750,644.61	40.58629971	-104.60298457	
13,000.00	90.00	270.71	7,290.00	604.79	-5,399.31	14,740,488.97	1,750,544.61	40.58630307	-104.60334471	
13,100.00	90.00	270.71	7,290.00	606.04	-5,499.30	14,740,489.75	1,750,444.61	40.58630644	-104.60370485	
13,200.00	90.00	270.71	7,290.00	607.29	-5,599.30	14,740,490.52	1,750,344.62	40.58630980	-104.60406500	
13,300.00	90.00	270.71	7,290.00	608.54	-5,699.29	14,740,491.30	1,750,244.62	40.58631316	-104.60442514	
13,400.00	90.00	270.71	7,290.00	609.78	-5,799.28	14,740,492.07	1,750,144.62	40.58631652	-104.60478529	
13,500.00	90.00	270.71	7,290.00	611.03	-5,899.27	14,740,492.85	1,750,044.63	40.58631988	-104.60514543	
13,600.00	90.00	270.71	7,290.00	612.28	-5,999.27	14,740,493.62	1,749,944.63	40.58632324	-104.60550558	
13,700.00	90.00	270.71	7,290.00	613.53	-6,099.26	14,740,494.40	1,749,844.63	40.58632660	-104.60586572	
13,800.00	90.00	270.71	7,290.00	614.77	-6,199.25	14,740,495.17	1,749,744.64	40.58632996	-104.60622587	
13,900.00	90.00	270.71	7,290.00	616.02	-6,299.24	14,740,495.95	1,749,644.64	40.58633331	-104.60658601	
14,000.00	90.00	270.71	7,290.00	617.27	-6,399.23	14,740,496.72	1,749,544.64	40.58633667	-104.60694616	
14,100.00	90.00	270.71	7,290.00	618.52	-6,499.23	14,740,497.50	1,749,444.65	40.58634002	-104.60730630	
14,200.00	90.00	270.71	7,290.00	619.76	-6,599.22	14,740,498.27	1,749,344.65	40.58634337	-104.60766645	
14,300.00	90.00	270.71	7,290.00	621.01	-6,699.21	14,740,499.05	1,749,244.65	40.58634672	-104.60802659	
14,400.00	90.00	270.71	7,290.00	622.26	-6,799.20	14,740,499.82	1,749,144.66	40.58635007	-104.60838674	
14,500.00	90.00	270.71	7,290.00	623.51	-6,899.20	14,740,500.60	1,749,044.66	40.58635342	-104.60874688	
14,600.00	90.00	270.71	7,290.00	624.75	-6,999.19	14,740,501.37	1,748,944.66	40.58635677	-104.60910703	
14,700.00	90.00	270.71	7,290.00	626.00	-7,099.18	14,740,502.15	1,748,844.66	40.58636011	-104.60946717	
14,800.00	90.00	270.71	7,290.00	627.25	-7,199.17	14,740,502.92	1,748,744.67	40.58636346	-104.60982732	
14,900.00	90.00	270.71	7,290.00	628.50	-7,299.16	14,740,503.70	1,748,644.67	40.58636680	-104.61018746	
15,000.00	90.00	270.71	7,290.00	629.74	-7,399.16	14,740,504.47	1,748,544.67	40.58637015	-104.61054761	
15,100.00	90.00	270.71	7,290.00	630.99	-7,499.15	14,740,505.25	1,748,444.68	40.58637349	-104.61090775	
15,200.00	90.00	270.71	7,290.00	632.24	-7,599.14	14,740,506.02	1,748,344.68	40.58637683	-104.61126790	
15,300.00	90.00	270.71	7,290.00	633.49	-7,699.13	14,740,506.80	1,748,244.68	40.58638017	-104.61162804	
15,400.00	90.00	270.71	7,290.00	634.73	-7,799.13	14,740,507.57	1,748,144.69	40.58638351	-104.61198819	
15,500.00	90.00	270.71	7,290.00	635.98	-7,899.12	14,740,508.35	1,748,044.69	40.58638684	-104.61234834	
15,600.00	90.00	270.71	7,290.00	637.23	-7,999.11	14,740,509.12	1,747,944.69	40.58639018	-104.61270848	

<b>Database:</b>	DB_Jul2216dt_v14	<b>Local Co-ordinate Reference:</b>	Well Pickaroon 7-04-04L
<b>Company:</b>	Confluence Resources	<b>TVD Reference:</b>	RKB=4986+24 @ 5010.00ft
<b>Project:</b>	Weld County, Colorado	<b>MD Reference:</b>	RKB=4986+24 @ 5010.00ft
<b>Site:</b>	Section 07-T07N-R64W	<b>North Reference:</b>	True
<b>Well:</b>	Pickaroon 7-04-04L	<b>Survey Calculation Method:</b>	Minimum Curvature
<b>Wellbore:</b>	Original Hole		
<b>Design:</b>	plan1		

Planned Survey										
Measured Depth (ft)	Inclination (°)	Azimuth (°)	Vertical Depth (ft)	+N/-S (ft)	+E/-W (ft)	Map Northing (usft)	Map Easting (usft)	Latitude	Longitude	
15,700.00	90.00	270.71	7,290.00	638.48	-8,099.10	14,740,509.90	1,747,844.70	40.58639352	-104.61306863	
15,800.00	90.00	270.71	7,290.00	639.72	-8,199.09	14,740,510.67	1,747,744.70	40.58639685	-104.61342877	
15,900.00	90.00	270.71	7,290.00	640.97	-8,299.09	14,740,511.45	1,747,644.70	40.58640018	-104.61378892	
16,000.00	90.00	270.71	7,290.00	642.22	-8,399.08	14,740,512.22	1,747,544.71	40.58640351	-104.61414906	
16,100.00	90.00	270.71	7,290.00	643.47	-8,499.07	14,740,513.00	1,747,444.71	40.58640684	-104.61450921	
16,200.00	90.00	270.71	7,290.00	644.71	-8,599.06	14,740,513.77	1,747,344.71	40.58641017	-104.61486936	
16,300.00	90.00	270.71	7,290.00	645.96	-8,699.06	14,740,514.55	1,747,244.72	40.58641350	-104.61522950	
16,400.00	90.00	270.71	7,290.00	647.21	-8,799.05	14,740,515.32	1,747,144.72	40.58641683	-104.61558965	
16,500.00	90.00	270.71	7,290.00	648.46	-8,899.04	14,740,516.10	1,747,044.72	40.58642016	-104.61594979	
16,600.00	90.00	270.71	7,290.00	649.70	-8,999.03	14,740,516.87	1,746,944.73	40.58642348	-104.61630994	
16,700.00	90.00	270.71	7,290.00	650.95	-9,099.02	14,740,517.65	1,746,844.73	40.58642680	-104.61667009	
16,800.00	90.00	270.71	7,290.00	652.20	-9,199.02	14,740,518.42	1,746,744.73	40.58643013	-104.61703023	
16,900.00	90.00	270.71	7,290.00	653.45	-9,299.01	14,740,519.20	1,746,644.74	40.58643345	-104.61739038	
17,000.00	90.00	270.71	7,290.00	654.69	-9,399.00	14,740,519.97	1,746,544.74	40.58643677	-104.61775052	
17,100.00	90.00	270.71	7,290.00	655.94	-9,498.99	14,740,520.75	1,746,444.74	40.58644009	-104.61811067	
17,186.42	90.00	270.71	7,290.00	657.02	-9,585.40	14,740,521.42	1,746,358.33	40.58644296	-104.61842189	
<b>PBHL/TD 17186.42 MD/7290.00 TVD</b>										

Design Targets										
Target Name	Dip Angle (°)	Dip Dir. (°)	TVD (ft)	+N/-S (ft)	+E/-W (ft)	Northing (usft)	Easting (usft)	Latitude	Longitude	
Pickaroon 7-4-4L BHL 2' - hit/miss target - Shape - Point	0.00	0.00	7,290.00	657.02	-9,585.40	14,740,521.42	1,746,358.33	40.58644296	-104.61842189	
Pickaroon 7-4-4L LP 21' - plan hits target center - Point	0.00	0.00	7,290.00	539.52	-167.18	14,740,448.42	1,755,776.98	40.58612547	-104.58450008	

Plan Annotations					
Measured Depth (ft)	Vertical Depth (ft)	Local Coordinates		Comment	
		+N/-S (ft)	+E/-W (ft)		
5,500.00	5,500.00	0.00	0.00	KOP Begin 10°/100' build	
5,771.36	5,761.33	39.42	49.23	Begin 27.14° tangent	
6,661.11	6,553.14	293.11	365.98	Begin 10°/100' build/turn	
7,767.46	7,290.00	539.52	-167.18	Begin 90.00° lateral	
17,186.42	7,290.00	657.02	-9,585.40	PBHL/TD 17186.42 MD/7290.00 TVD	