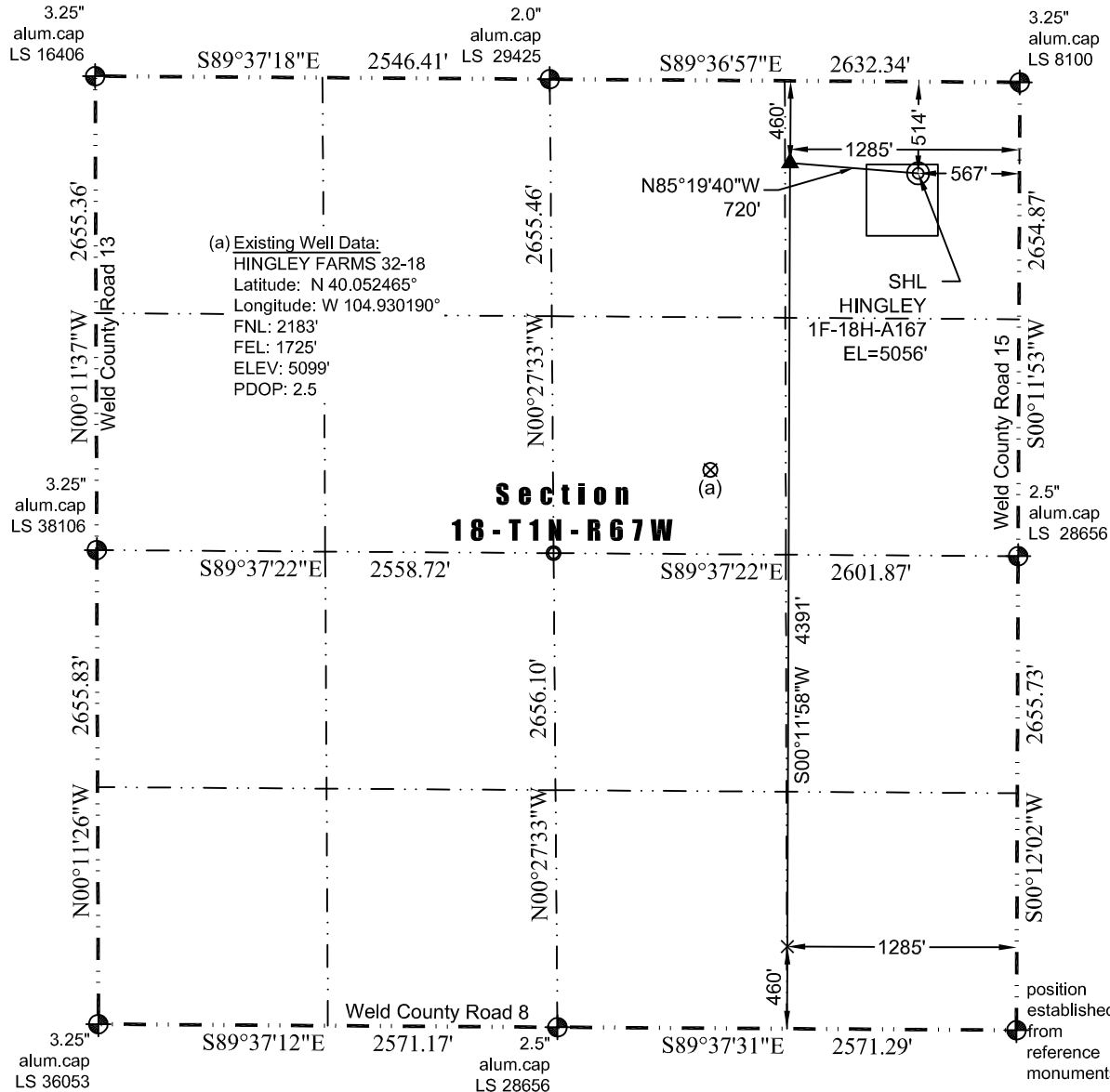




# WELL LOCATION CERTIFICATE

THIS MAP DOES NOT REPRESENT A BOUNDARY SURVEY

Washburn Land Surveying  
www.WashburnSurveying.com  
970-232-9645



Scale 1" = 1000'  
1000'  
approximate scale

In accordance with a request from Jay Knutson of Crestone Peak Resources, Washburn Land Surveying, LLC has determined the location of the **Hingley 1F-18H-A167** well site to be SHL: 514' FNL and 567' FEL, (TPZ: 460' FNL and 1285' FEL, BHL: 460' FSL and 1285' FEL), as measured at ninety (90) degrees from the section lines of Section 18, Township 1 North, Range 67 West of the 6th Principal Meridian, Weld County Colorado.

#### Proposed Surface Hole Data:

Latitude: N 40.057007°  
Longitude: W 104.925994°  
PDOP: 1.3

#### Proposed TPZ Data:

Latitude: N 40.057180°  
Longitude: W 104.928556°

#### Proposed Bottom Hole Data:

Latitude: N 40.045127°  
Longitude: W 104.928712°

#### Nearest Cultural Items:

Building: 1302' southeast  
Building Unit: 2492' southeast  
Public Road: 557' east  
Property Line: 514' north  
Existing Well: 2029' southwest (Hingley Farms 32-18)

Above Ground Utility: 400' north  
Well Window: SHL is 51' inside  
Railroad: +5280'  
High Occupancy Building Unit: +5280'  
Designated Outside Activity Area: +5280'

#### LEGEND

- Found Survey Monument
- Calculated Location
- Surface Hole Location (SHL)
- Top of Production Zone (TPZ)
- Bottom Hole Location (BHL)

I hereby certify that this Well Location Certificate was prepared by me or under my direct supervision on 1/28/2018 for and on behalf of Crestone Peak Resources, LLC. This is not a Land Survey Plat or an Improved Survey Plat and that it is not to be relied upon for establishment of fences, buildings, or other future improvement lines.

John Robert McGehee, L.S. 3219  
Well: Hingley 1F-18H-A167 WLC

#### Notes:

- Bearings and distances based on NAD 83 Colorado North State Plane Coordinate, using RTK GPS observations taken 10/31/17 by operator Jason Dahlman
- Conversion factor to ground (1.0002768105).
- Elevations based on NAVD 88 GPS heights and Geoid 2009 corrections.
- See Location Drawing for visible improvements within 500 feet of Pad Site.
- The surface use is a cultivated field.

NOTICE: According to Colorado law you must commence any legal action based upon any defect in this W.L.C. within three years after you first discover such defect. In no event may any action based upon any defect in this W.L.C. be commenced more than ten years from this said date of the certification shown herein.