

Inspection Photos
Location Name: Hotchkiss Water Storage Facility
Facility ID #421193



Facility entrance gate.



Natural gas powered generator.

Inspection Photos
Location Name: Hotchkiss Water Storage Facility
Facility ID #421193



Southern pit.



Open topped frac tank plumbed to pump house.

Inspection Photos
Location Name: Hotchkiss Water Storage Facility
Facility ID #421193



Southern pit with netting retracted.



Facility ID #421193 ancillary equipment adjacent to southern pit.

Inspection Photos
Location Name: Hotchkiss Water Storage Facility
Facility ID #421193



Northern pit. Netting was retracted during this inspection.



View of southern pit, looking east.

Inspection Photos
Location Name: Hotchkiss Water Storage Facility
Facility ID #421193

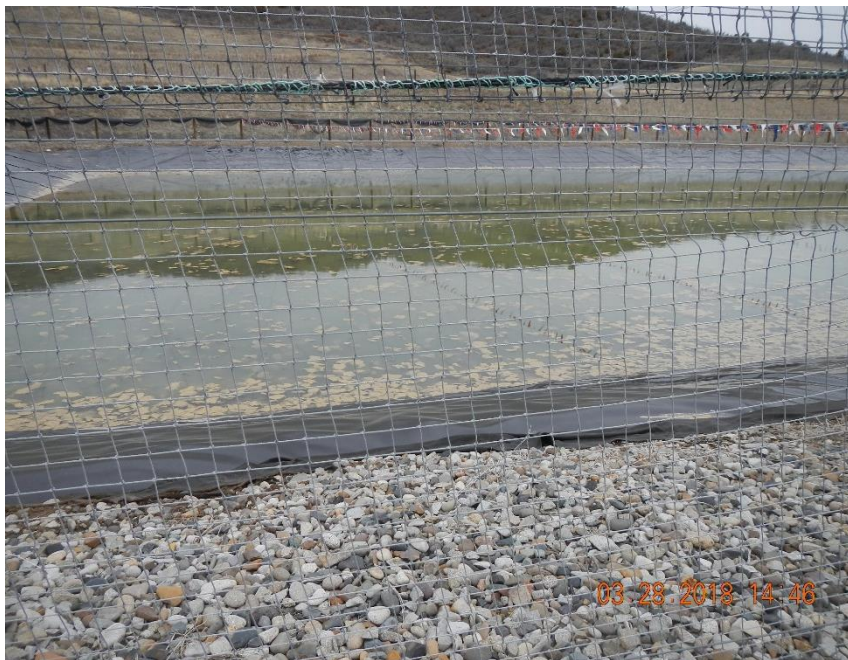


Storm water BMPs along western edge of facility.



MW #3 between northern and southern pits.

Inspection Photos
Location Name: Hotchkiss Water Storage Facility
Facility ID #421193



Algae growth in southern pit.



MW #2 and stock pond down gradient of facility.