

SRC ENERGY

WELD COUNTY (NAD83, TRUE NORTH)

5N-66W-07 BOST FARM 5-7 PAD

BOST FARM 40C-8-L

Wellbore #1

Plan: Design #1

Standard Planning Report

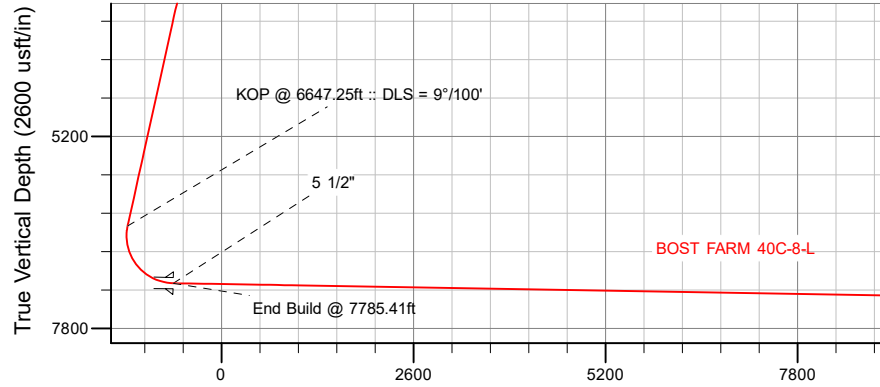
28 December, 2017

Project: WELD COUNTY (NAD83, TRUE NORTH)
Site: 5N-66W-07 BOST FARM 5-7 PAD
Well: BOST FARM 40C-8-L
Wellbore: Wellbore #1
Design: Design #1

SRC ENERGY

CASING DETAILS

TVD	MD	Name	Size
1750.00	1789.72	9 5/8"	9-5/8
7189.00	7785.41	5 1/2"	5-1/2



Vertical Section at 96.68° (2600 usft/in)

SECTION DETAILS

Sec	MD	Inc	Azi	TVD	+N/-S	+E/-W	Dleg	TFace	Vsect	Target
1	0.00	0.00	0.00	0.00	0.00	0.00	0.00	0.00	0.00	
2	250.00	0.00	0.00	250.00	0.00	0.00	0.00	0.00	0.00	
3	1060.00	16.20	236.30	1049.25	-63.11	-94.63	2.00	236.30	-86.65	
4	6647.25	16.20	236.30	6414.65	-928.00	-1391.48	0.00	0.00	-1274.00	
5	7785.41	89.02	90.13	7189.00	-1052.50	-783.21	9.00	-145.24	-655.37	
6	17749.80	89.02	90.13	7359.00	-1075.87	9179.70	0.00	0.00	9242.53	BOST FARM 40C-8-L_BHL

WELLBORE TARGET DETAILS (LAT/LONG)

Name	TVD	+N/-S	+E/-W	Latitude	Longitude
BOST FARM 40C-8-L_SHL	0.00	0.01	0.00	40.417372	-104.829015
BOST FARM 40C-8-L_BHL	7359.00	-1075.87	9179.70	40.414414	-104.796048

WELL DETAILS: BOST FARM 40C-8-L

GL = 4880'
RKB = 20' @ 4900.00usft (PD 462)

Plan: Design #1 (BOST FARM 40C-8-L/Wellbore #1)

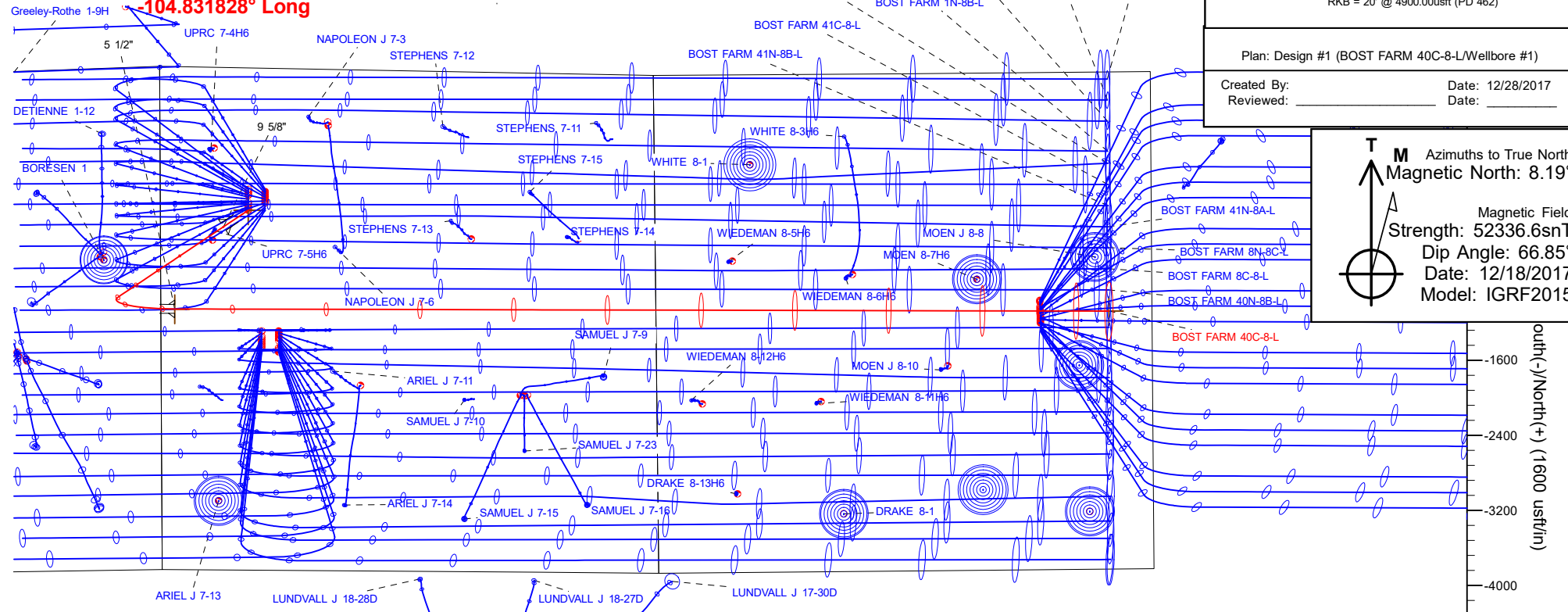
Created By: _____ Date: 12/28/2017
Reviewed: _____ Date: _____

T Azimuths to True North
M Magnetic North: 8.19°
Magnetic Field
Strength: 52336.6snT
Dip Angle: 66.85°
Date: 12/18/2017
Model: IGRF2015

SHL
1517' FNL
939' FWL

LP
2587' FNL
150' FWL
40.414473° Lat
-104.831828° Long

BHL
2551' FNL
460' FEL



Hewlett-Packard

Planning Report

Database:	EDM 5000.14 Single User Db	Local Co-ordinate Reference:	Well BOST FARM 40C-8-L
Company:	SRC ENERGY	TVD Reference:	RKB = 20' @ 4900.00usft (PD 462)
Project:	WELD COUNTY (NAD83, TRUE NORTH)	MD Reference:	RKB = 20' @ 4900.00usft (PD 462)
Site:	5N-66W-07 BOST FARM 5-7 PAD	North Reference:	True
Well:	BOST FARM 40C-8-L	Survey Calculation Method:	Minimum Curvature
Wellbore:	Wellbore #1		
Design:	Design #1		

Project	WELD COUNTY (NAD83, TRUE NORTH)		
Map System:	US State Plane 1983	System Datum:	Mean Sea Level
Geo Datum:	North American Datum 1983		
Map Zone:	Colorado Northern Zone		

Site	5N-66W-07 BOST FARM 5-7 PAD			
Site Position:		Northing:	1,395,815.76 usft	Latitude: 40.417972
From:	Lat/Long	Easting:	3,187,006.76 usft	Longitude: -104.828362
Position Uncertainty:	0.00 usft	Slot Radius:	13-3/16 "	Grid Convergence: 0.43 °

Well	BOST FARM 40C-8-L			
Well Position	+N/-S	-218.59 usft	Northing:	1,395,595.80 usft
	+E/-W	-181.82 usft	Easting:	3,186,826.60 usft
Position Uncertainty		3.28 usft	Wellhead Elevation:	Latitude: 40.417372
				Longitude: -104.829015
				Ground Level: 4,880.00 usft

Wellbore	Wellbore #1				
Magnetics	Model Name	Sample Date	Declination (°)	Dip Angle (°)	Field Strength (nT)
	IGRF2015	12/18/2017	8.19	66.85	52,336.56705144

Design	Design #1			
Audit Notes:				
Version:	Phase:	PLAN	Tie On Depth:	0.00
Vertical Section:	Depth From (TVD) (usft)	+N/-S (usft)	+E/-W (usft)	Direction (°)
	0.00	0.00	0.00	96.68

Plan Survey Tool Program	Date	12/28/2017		
Depth From (usft)	Depth To (usft)	Survey (Wellbore)	Tool Name	Remarks
1	0.00	1,750.00	Design #1 (Wellbore #1)	SRC Energy_ISCWSA REV 2
				Fixed:v2:crustal field declinatio
2	1,750.00	17,749.80	Design #1 (Wellbore #1)	SRC Energy_ISCWSA REV 2
				Fixed:v2:crustal field declinatio

Plan Sections										
Measured Depth (usft)	Inclination (°)	Azimuth (°)	Vertical Depth (usft)	+N/-S (usft)	+E/-W (usft)	Dogleg Rate (°/100usft)	Build Rate (°/100usft)	Turn Rate (°/100usft)	TFO (°)	Target
0.00	0.00	0.00	0.00	0.00	0.00	0.00	0.00	0.00	0.00	
250.00	0.00	0.00	250.00	0.00	0.00	0.00	0.00	0.00	0.00	
1,060.00	16.20	236.30	1,049.25	-63.11	-94.63	2.00	2.00	0.00	236.30	
6,647.25	16.20	236.30	6,414.65	-928.00	-1,391.48	0.00	0.00	0.00	0.00	
7,785.41	89.02	90.13	7,189.00	-1,052.50	-783.21	9.00	6.40	-12.84	-145.24	
17,749.80	89.02	90.13	7,359.00	-1,075.87	9,179.70	0.00	0.00	0.00	0.00	BOST FARM 40C-8-L

Hewlett-Packard

Planning Report

Database:	EDM 5000.14 Single User Db	Local Co-ordinate Reference:	Well BOST FARM 40C-8-L
Company:	SRC ENERGY	TVD Reference:	RKB = 20' @ 4900.00usft (PD 462)
Project:	WELD COUNTY (NAD83, TRUE NORTH)	MD Reference:	RKB = 20' @ 4900.00usft (PD 462)
Site:	5N-66W-07 BOST FARM 5-7 PAD	North Reference:	True
Well:	BOST FARM 40C-8-L	Survey Calculation Method:	Minimum Curvature
Wellbore:	Wellbore #1		
Design:	Design #1		

Planned Survey									
Measured Depth (usft)	Inclination (°)	Azimuth (°)	Vertical Depth (usft)	+N/-S (usft)	+E/-W (usft)	Vertical Section (usft)	Dogleg Rate (°/100usft)	Build Rate (°/100usft)	Turn Rate (°/100usft)
0.00	0.00	0.00	0.00	0.00	0.00	0.00	0.00	0.00	0.00
100.00	0.00	0.00	100.00	0.00	0.00	0.00	0.00	0.00	0.00
200.00	0.00	0.00	200.00	0.00	0.00	0.00	0.00	0.00	0.00
250.00	0.00	0.00	250.00	0.00	0.00	0.00	0.00	0.00	0.00
Begin Nudge @ 250.00ft									
300.00	1.00	236.30	300.00	-0.24	-0.36	-0.33	2.00	2.00	0.00
400.00	3.00	236.30	399.93	-2.18	-3.27	-2.99	2.00	2.00	0.00
500.00	5.00	236.30	499.68	-6.05	-9.07	-8.30	2.00	2.00	0.00
600.00	7.00	236.30	599.13	-11.85	-17.77	-16.27	2.00	2.00	0.00
700.00	9.00	236.30	698.15	-19.57	-29.34	-26.87	2.00	2.00	0.00
800.00	11.00	236.30	796.63	-29.20	-43.79	-40.09	2.00	2.00	0.00
900.00	13.00	236.30	894.44	-40.74	-61.09	-55.93	2.00	2.00	0.00
1,000.00	15.00	236.30	991.46	-54.16	-81.21	-74.36	2.00	2.00	0.00
1,060.00	16.20	236.30	1,049.25	-63.11	-94.63	-86.65	2.00	2.00	0.00
End Nudge @ 1060.00ft									
1,100.00	16.20	236.30	1,087.66	-69.31	-103.92	-95.15	0.00	0.00	0.00
1,200.00	16.20	236.30	1,183.69	-84.79	-127.13	-116.40	0.00	0.00	0.00
1,300.00	16.20	236.30	1,279.72	-100.26	-150.34	-137.65	0.00	0.00	0.00
1,400.00	16.20	236.30	1,375.75	-115.74	-173.55	-158.90	0.00	0.00	0.00
1,500.00	16.20	236.30	1,471.78	-131.22	-196.76	-180.15	0.00	0.00	0.00
1,600.00	16.20	236.30	1,567.81	-146.70	-219.97	-201.40	0.00	0.00	0.00
1,700.00	16.20	236.30	1,663.84	-162.18	-243.18	-222.65	0.00	0.00	0.00
1,789.72	16.20	236.30	1,750.00	-176.07	-264.01	-241.72	0.00	0.00	0.00
9 5/8"									
1,800.00	16.20	236.30	1,759.87	-177.66	-266.39	-243.90	0.00	0.00	0.00
1,900.00	16.20	236.30	1,855.90	-193.14	-289.61	-265.16	0.00	0.00	0.00
2,000.00	16.20	236.30	1,951.93	-208.62	-312.82	-286.41	0.00	0.00	0.00
2,100.00	16.20	236.30	2,047.96	-224.10	-336.03	-307.66	0.00	0.00	0.00
2,200.00	16.20	236.30	2,143.99	-239.58	-359.24	-328.91	0.00	0.00	0.00
2,300.00	16.20	236.30	2,240.01	-255.06	-382.45	-350.16	0.00	0.00	0.00
2,400.00	16.20	236.30	2,336.04	-270.54	-405.66	-371.41	0.00	0.00	0.00
2,500.00	16.20	236.30	2,432.07	-286.02	-428.87	-392.66	0.00	0.00	0.00
2,600.00	16.20	236.30	2,528.10	-301.50	-452.08	-413.91	0.00	0.00	0.00
2,700.00	16.20	236.30	2,624.13	-316.98	-475.29	-435.17	0.00	0.00	0.00
2,800.00	16.20	236.30	2,720.16	-332.46	-498.50	-456.42	0.00	0.00	0.00
2,900.00	16.20	236.30	2,816.19	-347.94	-521.71	-477.67	0.00	0.00	0.00
3,000.00	16.20	236.30	2,912.22	-363.42	-544.92	-498.92	0.00	0.00	0.00
3,100.00	16.20	236.30	3,008.25	-378.90	-568.13	-520.17	0.00	0.00	0.00
3,200.00	16.20	236.30	3,104.28	-394.38	-591.35	-541.42	0.00	0.00	0.00
3,300.00	16.20	236.30	3,200.31	-409.86	-614.56	-562.67	0.00	0.00	0.00
3,400.00	16.20	236.30	3,296.34	-425.34	-637.77	-583.92	0.00	0.00	0.00
3,500.00	16.20	236.30	3,392.37	-440.82	-660.98	-605.17	0.00	0.00	0.00
3,600.00	16.20	236.30	3,488.40	-456.30	-684.19	-626.43	0.00	0.00	0.00
3,700.00	16.20	236.30	3,584.43	-471.78	-707.40	-647.68	0.00	0.00	0.00
3,800.00	16.20	236.30	3,680.46	-487.26	-730.61	-668.93	0.00	0.00	0.00
3,900.00	16.20	236.30	3,776.48	-502.74	-753.82	-690.18	0.00	0.00	0.00
4,000.00	16.20	236.30	3,872.51	-518.22	-777.03	-711.43	0.00	0.00	0.00
4,100.00	16.20	236.30	3,968.54	-533.70	-800.24	-732.68	0.00	0.00	0.00
4,200.00	16.20	236.30	4,064.57	-549.18	-823.45	-753.93	0.00	0.00	0.00
4,300.00	16.20	236.30	4,160.60	-564.65	-846.66	-775.18	0.00	0.00	0.00
4,400.00	16.20	236.30	4,256.63	-580.13	-869.88	-796.44	0.00	0.00	0.00
4,500.00	16.20	236.30	4,352.66	-595.61	-893.09	-817.69	0.00	0.00	0.00
4,600.00	16.20	236.30	4,448.69	-611.09	-916.30	-838.94	0.00	0.00	0.00

Hewlett-Packard

Planning Report

Database:	EDM 5000.14 Single User Db	Local Co-ordinate Reference:	Well BOST FARM 40C-8-L
Company:	SRC ENERGY	TVD Reference:	RKB = 20' @ 4900.00usft (PD 462)
Project:	WELD COUNTY (NAD83, TRUE NORTH)	MD Reference:	RKB = 20' @ 4900.00usft (PD 462)
Site:	5N-66W-07 BOST FARM 5-7 PAD	North Reference:	True
Well:	BOST FARM 40C-8-L	Survey Calculation Method:	Minimum Curvature
Wellbore:	Wellbore #1		
Design:	Design #1		

Planned Survey									
Measured Depth (usft)	Inclination (°)	Azimuth (°)	Vertical Depth (usft)	+N/-S (usft)	+E/-W (usft)	Vertical Section (usft)	Dogleg Rate (°/100usft)	Build Rate (°/100usft)	Turn Rate (°/100usft)
4,700.00	16.20	236.30	4,544.72	-626.57	-939.51	-860.19	0.00	0.00	0.00
4,800.00	16.20	236.30	4,640.75	-642.05	-962.72	-881.44	0.00	0.00	0.00
4,900.00	16.20	236.30	4,736.78	-657.53	-985.93	-902.69	0.00	0.00	0.00
5,000.00	16.20	236.30	4,832.81	-673.01	-1,009.14	-923.94	0.00	0.00	0.00
5,100.00	16.20	236.30	4,928.84	-688.49	-1,032.35	-945.19	0.00	0.00	0.00
5,200.00	16.20	236.30	5,024.87	-703.97	-1,055.56	-966.44	0.00	0.00	0.00
5,300.00	16.20	236.30	5,120.90	-719.45	-1,078.77	-987.70	0.00	0.00	0.00
5,400.00	16.20	236.30	5,216.93	-734.93	-1,101.98	-1,008.95	0.00	0.00	0.00
5,500.00	16.20	236.30	5,312.95	-750.41	-1,125.19	-1,030.20	0.00	0.00	0.00
5,600.00	16.20	236.30	5,408.98	-765.89	-1,148.40	-1,051.45	0.00	0.00	0.00
5,700.00	16.20	236.30	5,505.01	-781.37	-1,171.62	-1,072.70	0.00	0.00	0.00
5,800.00	16.20	236.30	5,601.04	-796.85	-1,194.83	-1,093.95	0.00	0.00	0.00
5,900.00	16.20	236.30	5,697.07	-812.33	-1,218.04	-1,115.20	0.00	0.00	0.00
6,000.00	16.20	236.30	5,793.10	-827.81	-1,241.25	-1,136.45	0.00	0.00	0.00
6,100.00	16.20	236.30	5,889.13	-843.29	-1,264.46	-1,157.71	0.00	0.00	0.00
6,200.00	16.20	236.30	5,985.16	-858.77	-1,287.67	-1,178.96	0.00	0.00	0.00
6,300.00	16.20	236.30	6,081.19	-874.25	-1,310.88	-1,200.21	0.00	0.00	0.00
6,400.00	16.20	236.30	6,177.22	-889.73	-1,334.09	-1,221.46	0.00	0.00	0.00
6,500.00	16.20	236.30	6,273.25	-905.21	-1,357.30	-1,242.71	0.00	0.00	0.00
6,600.00	16.20	236.30	6,369.28	-920.69	-1,380.51	-1,263.96	0.00	0.00	0.00
6,647.25	16.20	236.30	6,414.65	-928.00	-1,391.48	-1,274.00	0.00	0.00	0.00
KOP @ 6647.25ft :: DLS = 9°/100'									
6,650.00	16.00	235.79	6,417.29	-928.43	-1,392.11	-1,274.58	9.00	-7.37	-18.62
6,700.00	12.59	223.79	6,465.75	-936.24	-1,401.58	-1,283.08	9.00	-6.82	-23.99
6,750.00	10.05	204.64	6,514.79	-944.14	-1,407.18	-1,287.72	9.00	-5.07	-38.30
6,800.00	9.16	177.95	6,564.11	-952.09	-1,408.86	-1,288.46	9.00	-1.79	-53.39
6,850.00	10.34	152.03	6,613.41	-960.03	-1,406.61	-1,285.30	9.00	2.36	-51.83
6,900.00	13.04	134.07	6,662.39	-967.92	-1,400.45	-1,278.27	9.00	5.40	-35.92
6,950.00	16.53	122.86	6,710.74	-975.70	-1,390.42	-1,267.40	9.00	6.99	-22.43
7,000.00	20.41	115.63	6,758.16	-983.33	-1,376.58	-1,252.76	9.00	7.76	-14.45
7,050.00	24.50	110.68	6,804.36	-990.77	-1,359.01	-1,234.45	9.00	8.17	-9.90
7,100.00	28.70	107.09	6,849.06	-997.96	-1,337.82	-1,212.57	9.00	8.41	-7.19
7,150.00	32.98	104.35	6,891.99	-1,004.87	-1,313.15	-1,187.26	9.00	8.55	-5.47
7,200.00	37.30	102.18	6,932.86	-1,011.44	-1,285.14	-1,158.68	9.00	8.65	-4.34
7,250.00	41.66	100.41	6,971.45	-1,017.65	-1,253.97	-1,127.00	9.00	8.71	-3.55
7,300.00	46.04	98.91	7,007.50	-1,023.44	-1,219.83	-1,092.41	9.00	8.76	-2.99
7,350.00	50.44	97.63	7,040.79	-1,028.79	-1,182.93	-1,055.14	9.00	8.79	-2.58
7,400.00	54.84	96.49	7,071.13	-1,033.66	-1,143.50	-1,015.41	9.00	8.82	-2.27
7,450.00	59.26	95.47	7,098.31	-1,038.02	-1,101.78	-973.47	9.00	8.84	-2.03
7,500.00	63.69	94.55	7,122.18	-1,041.85	-1,058.03	-929.57	9.00	8.85	-1.86
7,550.00	68.12	93.69	7,142.59	-1,045.12	-1,012.52	-883.98	9.00	8.86	-1.72
7,600.00	72.55	92.88	7,159.41	-1,047.81	-965.52	-836.99	9.00	8.87	-1.62
7,650.00	76.99	92.11	7,172.54	-1,049.91	-917.33	-788.89	9.00	8.88	-1.54
7,700.00	81.43	91.37	7,181.90	-1,051.39	-868.25	-739.97	9.00	8.88	-1.48
7,750.00	85.88	90.64	7,187.42	-1,052.26	-818.58	-690.53	9.00	8.88	-1.45
7,785.41	89.02	90.13	7,189.00	-1,052.50	-783.21	-655.38	9.00	8.89	-1.43
End Build @ 7785.41ft - 5 1/2"									
7,800.00	89.02	90.13	7,189.25	-1,052.54	-768.62	-640.88	0.00	0.00	0.00
7,900.00	89.02	90.13	7,190.95	-1,052.77	-668.64	-541.55	0.00	0.00	0.00
8,000.00	89.02	90.13	7,192.66	-1,053.01	-568.65	-442.22	0.00	0.00	0.00
8,100.00	89.02	90.13	7,194.36	-1,053.24	-468.67	-342.88	0.00	0.00	0.00
8,200.00	89.02	90.13	7,196.07	-1,053.47	-368.68	-243.55	0.00	0.00	0.00
8,300.00	89.02	90.13	7,197.78	-1,053.71	-268.70	-144.22	0.00	0.00	0.00
8,400.00	89.02	90.13	7,199.48	-1,053.94	-168.71	-44.89	0.00	0.00	0.00

Hewlett-Packard

Planning Report

Database:	EDM 5000.14 Single User Db	Local Co-ordinate Reference:	Well BOST FARM 40C-8-L
Company:	SRC ENERGY	TVD Reference:	RKB = 20' @ 4900.00usft (PD 462)
Project:	WELD COUNTY (NAD83, TRUE NORTH)	MD Reference:	RKB = 20' @ 4900.00usft (PD 462)
Site:	5N-66W-07 BOST FARM 5-7 PAD	North Reference:	True
Well:	BOST FARM 40C-8-L	Survey Calculation Method:	Minimum Curvature
Wellbore:	Wellbore #1		
Design:	Design #1		

Planned Survey										
Measured Depth (usft)	Inclination (°)	Azimuth (°)	Vertical Depth (usft)	+N/-S (usft)	+E/-W (usft)	Vertical Section (usft)	Dogleg Rate (°/100usft)	Build Rate (°/100usft)	Turn Rate (°/100usft)	
8,500.00	89.02	90.13	7,201.19	-1,054.18	-68.73	54.45	0.00	0.00	0.00	
8,600.00	89.02	90.13	7,202.89	-1,054.41	31.26	153.78	0.00	0.00	0.00	
8,700.00	89.02	90.13	7,204.60	-1,054.65	131.24	253.11	0.00	0.00	0.00	
8,800.00	89.02	90.13	7,206.31	-1,054.88	231.23	352.44	0.00	0.00	0.00	
8,900.00	89.02	90.13	7,208.01	-1,055.12	331.22	451.78	0.00	0.00	0.00	
9,000.00	89.02	90.13	7,209.72	-1,055.35	431.20	551.11	0.00	0.00	0.00	
9,100.00	89.02	90.13	7,211.42	-1,055.59	531.19	650.44	0.00	0.00	0.00	
9,200.00	89.02	90.13	7,213.13	-1,055.82	631.17	749.78	0.00	0.00	0.00	
9,300.00	89.02	90.13	7,214.84	-1,056.05	731.16	849.11	0.00	0.00	0.00	
9,400.00	89.02	90.13	7,216.54	-1,056.29	831.14	948.44	0.00	0.00	0.00	
9,500.00	89.02	90.13	7,218.25	-1,056.52	931.13	1,047.77	0.00	0.00	0.00	
9,600.00	89.02	90.13	7,219.96	-1,056.76	1,031.11	1,147.11	0.00	0.00	0.00	
9,700.00	89.02	90.13	7,221.66	-1,056.99	1,131.10	1,246.44	0.00	0.00	0.00	
9,800.00	89.02	90.13	7,223.37	-1,057.23	1,231.08	1,345.77	0.00	0.00	0.00	
9,900.00	89.02	90.13	7,225.07	-1,057.46	1,331.07	1,445.11	0.00	0.00	0.00	
10,000.00	89.02	90.13	7,226.78	-1,057.70	1,431.05	1,544.44	0.00	0.00	0.00	
10,100.00	89.02	90.13	7,228.49	-1,057.93	1,531.04	1,643.77	0.00	0.00	0.00	
10,200.00	89.02	90.13	7,230.19	-1,058.17	1,631.02	1,743.10	0.00	0.00	0.00	
10,300.00	89.02	90.13	7,231.90	-1,058.40	1,731.01	1,842.44	0.00	0.00	0.00	
10,400.00	89.02	90.13	7,233.60	-1,058.63	1,830.99	1,941.77	0.00	0.00	0.00	
10,500.00	89.02	90.13	7,235.31	-1,058.87	1,930.98	2,041.10	0.00	0.00	0.00	
10,600.00	89.02	90.13	7,237.02	-1,059.10	2,030.96	2,140.44	0.00	0.00	0.00	
10,700.00	89.02	90.13	7,238.72	-1,059.34	2,130.95	2,239.77	0.00	0.00	0.00	
10,800.00	89.02	90.13	7,240.43	-1,059.57	2,230.93	2,339.10	0.00	0.00	0.00	
10,900.00	89.02	90.13	7,242.13	-1,059.81	2,330.92	2,438.43	0.00	0.00	0.00	
11,000.00	89.02	90.13	7,243.84	-1,060.04	2,430.90	2,537.77	0.00	0.00	0.00	
11,100.00	89.02	90.13	7,245.55	-1,060.28	2,530.89	2,637.10	0.00	0.00	0.00	
11,200.00	89.02	90.13	7,247.25	-1,060.51	2,630.87	2,736.43	0.00	0.00	0.00	
11,300.00	89.02	90.13	7,248.96	-1,060.75	2,730.86	2,835.77	0.00	0.00	0.00	
11,400.00	89.02	90.13	7,250.67	-1,060.98	2,830.84	2,935.10	0.00	0.00	0.00	
11,500.00	89.02	90.13	7,252.37	-1,061.21	2,930.83	3,034.43	0.00	0.00	0.00	
11,600.00	89.02	90.13	7,254.08	-1,061.45	3,030.81	3,133.76	0.00	0.00	0.00	
11,700.00	89.02	90.13	7,255.78	-1,061.68	3,130.80	3,233.10	0.00	0.00	0.00	
11,800.00	89.02	90.13	7,257.49	-1,061.92	3,230.79	3,332.43	0.00	0.00	0.00	
11,900.00	89.02	90.13	7,259.20	-1,062.15	3,330.77	3,431.76	0.00	0.00	0.00	
12,000.00	89.02	90.13	7,260.90	-1,062.39	3,430.76	3,531.10	0.00	0.00	0.00	
12,100.00	89.02	90.13	7,262.61	-1,062.62	3,530.74	3,630.43	0.00	0.00	0.00	
12,200.00	89.02	90.13	7,264.31	-1,062.86	3,630.73	3,729.76	0.00	0.00	0.00	
12,300.00	89.02	90.13	7,266.02	-1,063.09	3,730.71	3,829.09	0.00	0.00	0.00	
12,400.00	89.02	90.13	7,267.73	-1,063.32	3,830.70	3,928.43	0.00	0.00	0.00	
12,500.00	89.02	90.13	7,269.43	-1,063.56	3,930.68	4,027.76	0.00	0.00	0.00	
12,600.00	89.02	90.13	7,271.14	-1,063.79	4,030.67	4,127.09	0.00	0.00	0.00	
12,700.00	89.02	90.13	7,272.84	-1,064.03	4,130.65	4,226.43	0.00	0.00	0.00	
12,800.00	89.02	90.13	7,274.55	-1,064.26	4,230.64	4,325.76	0.00	0.00	0.00	
12,900.00	89.02	90.13	7,276.26	-1,064.50	4,330.62	4,425.09	0.00	0.00	0.00	
13,000.00	89.02	90.13	7,277.96	-1,064.73	4,430.61	4,524.42	0.00	0.00	0.00	
13,100.00	89.02	90.13	7,279.67	-1,064.97	4,530.59	4,623.76	0.00	0.00	0.00	
13,200.00	89.02	90.13	7,281.38	-1,065.20	4,630.58	4,723.09	0.00	0.00	0.00	
13,300.00	89.02	90.13	7,283.08	-1,065.44	4,730.56	4,822.42	0.00	0.00	0.00	
13,400.00	89.02	90.13	7,284.79	-1,065.67	4,830.55	4,921.76	0.00	0.00	0.00	
13,500.00	89.02	90.13	7,286.49	-1,065.90	4,930.53	5,021.09	0.00	0.00	0.00	
13,600.00	89.02	90.13	7,288.20	-1,066.14	5,030.52	5,120.42	0.00	0.00	0.00	
13,700.00	89.02	90.13	7,289.91	-1,066.37	5,130.50	5,219.75	0.00	0.00	0.00	
13,800.00	89.02	90.13	7,291.61	-1,066.61	5,230.49	5,319.09	0.00	0.00	0.00	

Hewlett-Packard

Planning Report

Database:	EDM 5000.14 Single User Db	Local Co-ordinate Reference:	Well BOST FARM 40C-8-L
Company:	SRC ENERGY	TVD Reference:	RKB = 20' @ 4900.00usft (PD 462)
Project:	WELD COUNTY (NAD83, TRUE NORTH)	MD Reference:	RKB = 20' @ 4900.00usft (PD 462)
Site:	5N-66W-07 BOST FARM 5-7 PAD	North Reference:	True
Well:	BOST FARM 40C-8-L	Survey Calculation Method:	Minimum Curvature
Wellbore:	Wellbore #1		
Design:	Design #1		

Planned Survey										
Measured Depth (usft)	Inclination (°)	Azimuth (°)	Vertical Depth (usft)	+N/-S (usft)	+E/-W (usft)	Vertical Section (usft)	Dogleg Rate (°/100usft)	Build Rate (°/100usft)	Turn Rate (°/100usft)	
13,900.00	89.02	90.13	7,293.32	-1,066.84	5,330.47	5,418.42	0.00	0.00	0.00	
14,000.00	89.02	90.13	7,295.02	-1,067.08	5,430.46	5,517.75	0.00	0.00	0.00	
14,100.00	89.02	90.13	7,296.73	-1,067.31	5,530.44	5,617.08	0.00	0.00	0.00	
14,200.00	89.02	90.13	7,298.44	-1,067.55	5,630.43	5,716.42	0.00	0.00	0.00	
14,300.00	89.02	90.13	7,300.14	-1,067.78	5,730.41	5,815.75	0.00	0.00	0.00	
14,400.00	89.02	90.13	7,301.85	-1,068.02	5,830.40	5,915.08	0.00	0.00	0.00	
14,500.00	89.02	90.13	7,303.55	-1,068.25	5,930.38	6,014.42	0.00	0.00	0.00	
14,600.00	89.02	90.13	7,305.26	-1,068.48	6,030.37	6,113.75	0.00	0.00	0.00	
14,700.00	89.02	90.13	7,306.97	-1,068.72	6,130.36	6,213.08	0.00	0.00	0.00	
14,800.00	89.02	90.13	7,308.67	-1,068.95	6,230.34	6,312.41	0.00	0.00	0.00	
14,900.00	89.02	90.13	7,310.38	-1,069.19	6,330.33	6,411.75	0.00	0.00	0.00	
15,000.00	89.02	90.13	7,312.09	-1,069.42	6,430.31	6,511.08	0.00	0.00	0.00	
15,100.00	89.02	90.13	7,313.79	-1,069.66	6,530.30	6,610.41	0.00	0.00	0.00	
15,200.00	89.02	90.13	7,315.50	-1,069.89	6,630.28	6,709.75	0.00	0.00	0.00	
15,300.00	89.02	90.13	7,317.20	-1,070.13	6,730.27	6,809.08	0.00	0.00	0.00	
15,400.00	89.02	90.13	7,318.91	-1,070.36	6,830.25	6,908.41	0.00	0.00	0.00	
15,500.00	89.02	90.13	7,320.62	-1,070.60	6,930.24	7,007.74	0.00	0.00	0.00	
15,600.00	89.02	90.13	7,322.32	-1,070.83	7,030.22	7,107.08	0.00	0.00	0.00	
15,700.00	89.02	90.13	7,324.03	-1,071.06	7,130.21	7,206.41	0.00	0.00	0.00	
15,800.00	89.02	90.13	7,325.73	-1,071.30	7,230.19	7,305.74	0.00	0.00	0.00	
15,900.00	89.02	90.13	7,327.44	-1,071.53	7,330.18	7,405.08	0.00	0.00	0.00	
16,000.00	89.02	90.13	7,329.15	-1,071.77	7,430.16	7,504.41	0.00	0.00	0.00	
16,100.00	89.02	90.13	7,330.85	-1,072.00	7,530.15	7,603.74	0.00	0.00	0.00	
16,200.00	89.02	90.13	7,332.56	-1,072.24	7,630.13	7,703.07	0.00	0.00	0.00	
16,300.00	89.02	90.13	7,334.27	-1,072.47	7,730.12	7,802.41	0.00	0.00	0.00	
16,400.00	89.02	90.13	7,335.97	-1,072.71	7,830.10	7,901.74	0.00	0.00	0.00	
16,500.00	89.02	90.13	7,337.68	-1,072.94	7,930.09	8,001.07	0.00	0.00	0.00	
16,600.00	89.02	90.13	7,339.38	-1,073.17	8,030.07	8,100.41	0.00	0.00	0.00	
16,700.00	89.02	90.13	7,341.09	-1,073.41	8,130.06	8,199.74	0.00	0.00	0.00	
16,800.00	89.02	90.13	7,342.80	-1,073.64	8,230.04	8,299.07	0.00	0.00	0.00	
16,900.00	89.02	90.13	7,344.50	-1,073.88	8,330.03	8,398.40	0.00	0.00	0.00	
17,000.00	89.02	90.13	7,346.21	-1,074.11	8,430.01	8,497.74	0.00	0.00	0.00	
17,100.00	89.02	90.13	7,347.91	-1,074.35	8,530.00	8,597.07	0.00	0.00	0.00	
17,200.00	89.02	90.13	7,349.62	-1,074.58	8,629.98	8,696.40	0.00	0.00	0.00	
17,300.00	89.02	90.13	7,351.33	-1,074.82	8,729.97	8,795.74	0.00	0.00	0.00	
17,400.00	89.02	90.13	7,353.03	-1,075.05	8,829.95	8,895.07	0.00	0.00	0.00	
17,500.00	89.02	90.13	7,354.74	-1,075.29	8,929.94	8,994.40	0.00	0.00	0.00	
17,600.00	89.02	90.13	7,356.44	-1,075.52	9,029.93	9,093.73	0.00	0.00	0.00	
17,700.00	89.02	90.13	7,358.15	-1,075.75	9,129.91	9,193.07	0.00	0.00	0.00	
17,749.80	89.02	90.13	7,359.00	-1,075.87	9,179.70	9,242.53	0.00	0.00	0.00	
TD Well @ 17749.80ft										

Casing Points					
Measured Depth (usft)	Vertical Depth (usft)	Name	Casing Diameter (")	Hole Diameter (")	
1,789.72	1,750.00	9 5/8"	9-5/8	13-1/2	
7,785.41	7,189.00	5 1/2"	5-1/2	8-1/2	

Hewlett-Packard

Planning Report

Database:	EDM 5000.14 Single User Db	Local Co-ordinate Reference:	Well BOST FARM 40C-8-L
Company:	SRC ENERGY	TVD Reference:	RKB = 20' @ 4900.00usft (PD 462)
Project:	WELD COUNTY (NAD83, TRUE NORTH)	MD Reference:	RKB = 20' @ 4900.00usft (PD 462)
Site:	5N-66W-07 BOST FARM 5-7 PAD	North Reference:	True
Well:	BOST FARM 40C-8-L	Survey Calculation Method:	Minimum Curvature
Wellbore:	Wellbore #1		
Design:	Design #1		

Plan Annotations				
Measured Depth (usft)	Vertical Depth (usft)	Local Coordinates		Comment
		+N/-S (usft)	+E/-W (usft)	
250.00	250.00	0.00	0.00	Begin Nudge @ 250.00ft
1,060.00	1,049.25	-63.11	-94.63	End Nudge @ 1060.00ft
6,647.25	6,414.65	-928.00	-1,391.48	KOP @ 6647.25ft :: DLS = 9°/100'
7,785.41	7,189.00	-1,052.50	-783.21	End Build @ 7785.41ft
17,749.80	7,359.00	-1,075.87	9,179.70	TD Well @ 17749.80ft