

SRC ENERGY

WELD COUNTY (NAD83, TRUE NORTH)

5N-66W-07 BOST FARM 5-7 PAD

BOST FARM 8C-8-L

Wellbore #1

Plan: Design #1

Standard Planning Report

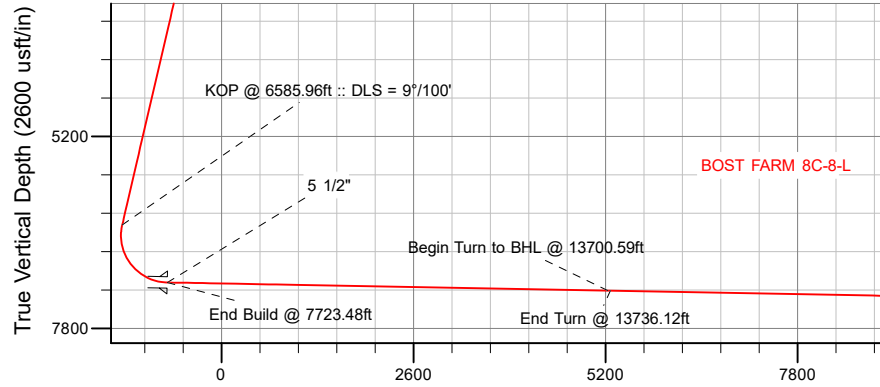
28 December, 2017

Project: WELD COUNTY (NAD83, TRUE NORTH)
Site: 5N-66W-07 BOST FARM 5-7 PAD
Well: BOST FARM 8C-8-L
Wellbore: Wellbore #1
Design: Design #1

SRC ENERGY

CASING DETAILS

TVD	MD	Name	Size
1750.00	1783.65	9 5/8"	9-5/8
7179.00	7723.48	5 1/2"	5-1/2



Vertical Section at 94.14° (2600 usft/in)

West(-)/East(+) (1600 usft/in)

SECTION DETAILS

Sec	MD	Inc	Azi	TVD	+N/-S	+E/-W	Dleg	TFace	VSec	Target
1	0.00	0.00	0.00	0.00	0.00	0.00	0.00	0.00	0.00	
2	250.00	0.00	0.00	250.00	0.00	0.00	0.00	0.00	0.00	
3	977.50	14.55	248.00	969.71	-34.42	-85.19	2.00	248.00	-82.48	
4	6585.96	14.55	248.00	6398.30	-562.23	-1391.57	0.00	0.00	-1347.35	
5	7723.48	88.94	90.41	7179.00	-642.36	-784.62	9.00	-157.03	-736.20	
6	13700.59	88.94	90.41	7289.39	-685.00	5191.32	0.00	0.00	5227.23	BOST FARM 8C-8-L_tgt
7	13736.12	88.94	89.70	7290.05	-685.03	5226.84	2.00	-90.00	5262.66	
8	17686.20	88.94	89.70	7363.00	-664.22	9176.19	0.00	0.00	9200.20	BOST FARM 8C-8-L_BHL

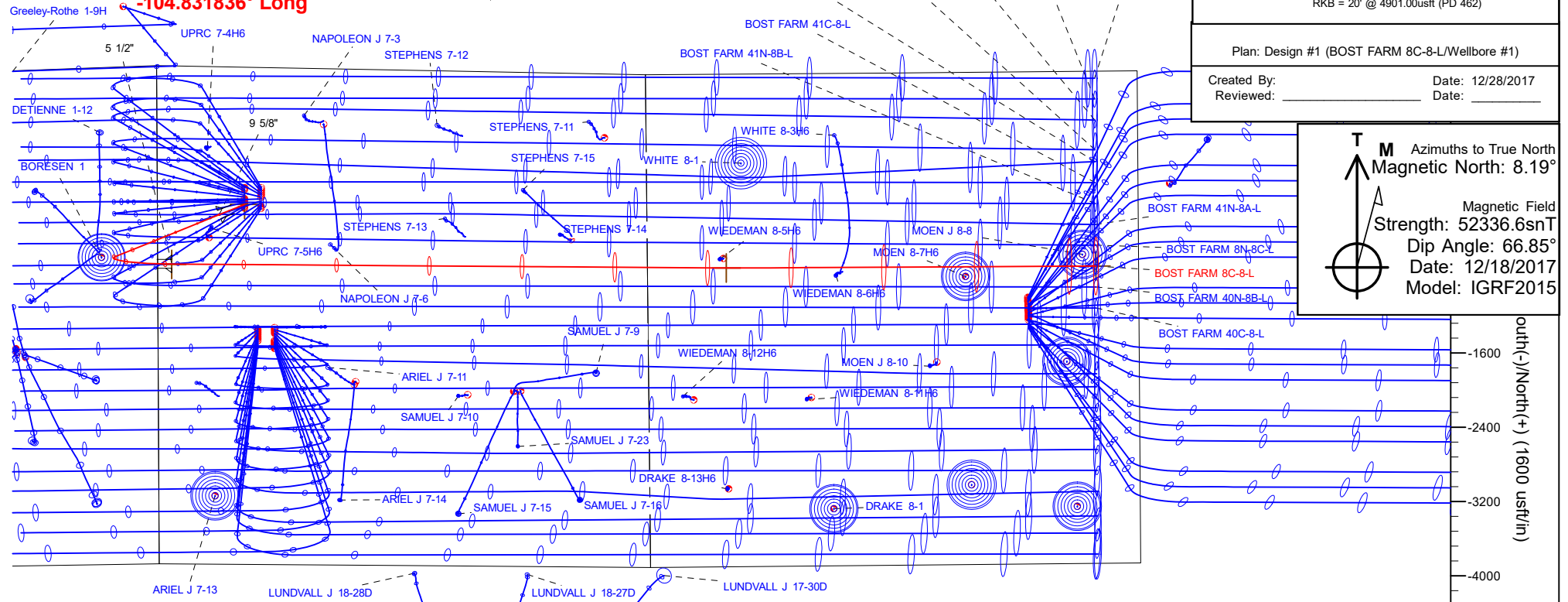
WELLBORE TARGET DETAILS (LAT/LONG)

Name	TVD	+N/-S	+E/-W	Latitude	Longitude
BOST FARM 8C-8-L_SHL	0.00	0.00	0.00	40.417482	-104.829014
BOST FARM 8C-8-L_BHL	7363.00	-664.22	9176.19	40.415654	-104.796059

SHL
1477' FNL
939' FWL

LP
2137' FNL
150' FWL
40.415709° Lat
-104.831836° Long

BHL
2100' FNL
460' FEL



WELL DETAILS: BOST FARM 8C-8-L

GL = 4881'

RKB = 20' @ 4901.00usft (PD 462)

Plan: Design #1 (BOST FARM 8C-8-L/Wellbore #1)

Created By: _____ Date: 12/28/2017
Reviewed: _____ Date: _____

T M Azimuths to True North
Magnetic North: 8.19°
Magnetic Field
Strength: 52336.6snT
Dip Angle: 66.85°
Date: 12/18/2017
Model: IGRF2015

Hewlett-Packard

Planning Report

Database:	EDM 5000.14 Single User Db	Local Co-ordinate Reference:	Well BOST FARM 8C-8-L
Company:	SRC ENERGY	TVD Reference:	RKB = 20' @ 4901.00usft (PD 462)
Project:	WELD COUNTY (NAD83, TRUE NORTH)	MD Reference:	RKB = 20' @ 4901.00usft (PD 462)
Site:	5N-66W-07 BOST FARM 5-7 PAD	North Reference:	True
Well:	BOST FARM 8C-8-L	Survey Calculation Method:	Minimum Curvature
Wellbore:	Wellbore #1		
Design:	Design #1		

Project	WELD COUNTY (NAD83, TRUE NORTH)		
Map System:	US State Plane 1983	System Datum:	Mean Sea Level
Geo Datum:	North American Datum 1983		
Map Zone:	Colorado Northern Zone		

Site	5N-66W-07 BOST FARM 5-7 PAD			
Site Position:		Northing:	1,395,815.76 usft	Latitude: 40.417972
From:	Lat/Long	Easting:	3,187,006.76 usft	Longitude: -104.828362
Position Uncertainty:	0.00 usft	Slot Radius:	13-3/16 "	Grid Convergence: 0.43 °

Well	BOST FARM 8C-8-L			
Well Position	+N/-S	-178.51 usft	Northing:	1,395,635.88 usft
	+E/-W	-181.54 usft	Easting:	3,186,826.58 usft
Position Uncertainty		3.28 usft	Wellhead Elevation:	Latitude: 40.417482
				Longitude: -104.829014
				Ground Level: 4,881.00 usft

Wellbore	Wellbore #1				
Magnetics	Model Name	Sample Date	Declination (°)	Dip Angle (°)	Field Strength (nT)
	IGRF2015	12/18/2017	8.19	66.85	52,336.61611340

Design	Design #1			
Audit Notes:				
Version:	Phase:	PLAN	Tie On Depth:	0.00
Vertical Section:	Depth From (TVD) (usft)	+N/-S (usft)	+E/-W (usft)	Direction (°)
	0.00	0.00	0.00	94.14

Plan Survey Tool Program	Date	12/27/2017		
Depth From (usft)	Depth To (usft)	Survey (Wellbore)	Tool Name	Remarks
1	0.00	1,750.00	Design #1 (Wellbore #1)	SRC Energy_ISCWSA REV 2
				Fixed:v2:crustal field declinatio
2	1,750.00	17,686.20	Design #1 (Wellbore #1)	SRC Energy_ISCWSA REV 2
				Fixed:v2:crustal field declinatio

Hewlett-Packard
Planning Report

Database:	EDM 5000.14 Single User Db	Local Co-ordinate Reference:	Well BOST FARM 8C-8-L
Company:	SRC ENERGY	TVD Reference:	RKB = 20' @ 4901.00usft (PD 462)
Project:	WELD COUNTY (NAD83, TRUE NORTH)	MD Reference:	RKB = 20' @ 4901.00usft (PD 462)
Site:	5N-66W-07 BOST FARM 5-7 PAD	North Reference:	True
Well:	BOST FARM 8C-8-L	Survey Calculation Method:	Minimum Curvature
Wellbore:	Wellbore #1		
Design:	Design #1		

Plan Sections										
Measured Depth (usft)	Inclination (°)	Azimuth (°)	Vertical Depth (usft)	+N/-S (usft)	+E/-W (usft)	Dogleg Rate (°/100usft)	Build Rate (°/100usft)	Turn Rate (°/100usft)	TFO (°)	Target
0.00	0.00	0.00	0.00	0.00	0.00	0.00	0.00	0.00	0.00	
250.00	0.00	0.00	250.00	0.00	0.00	0.00	0.00	0.00	0.00	
977.50	14.55	248.00	969.71	-34.42	-85.19	2.00	2.00	0.00	248.00	
6,585.96	14.55	248.00	6,398.30	-562.23	-1,391.57	0.00	0.00	0.00	0.00	
7,723.48	88.94	90.41	7,179.00	-642.36	-784.62	9.00	6.54	-13.85	-157.03	
13,700.59	88.94	90.41	7,289.39	-685.00	5,191.32	0.00	0.00	0.00	0.00	BOST FARM 8C-8-L_
13,736.12	88.94	89.70	7,290.05	-685.03	5,226.84	2.00	0.00	-2.00	-90.00	
17,686.20	88.94	89.70	7,363.00	-664.22	9,176.19	0.00	0.00	0.00	0.00	BOST FARM 8C-8-L_

Hewlett-Packard

Planning Report

Database:	EDM 5000.14 Single User Db	Local Co-ordinate Reference:	Well BOST FARM 8C-8-L
Company:	SRC ENERGY	TVD Reference:	RKB = 20' @ 4901.00usft (PD 462)
Project:	WELD COUNTY (NAD83, TRUE NORTH)	MD Reference:	RKB = 20' @ 4901.00usft (PD 462)
Site:	5N-66W-07 BOST FARM 5-7 PAD	North Reference:	True
Well:	BOST FARM 8C-8-L	Survey Calculation Method:	Minimum Curvature
Wellbore:	Wellbore #1		
Design:	Design #1		

Planned Survey									
Measured Depth (usft)	Inclination (°)	Azimuth (°)	Vertical Depth (usft)	+N/-S (usft)	+E/-W (usft)	Vertical Section (usft)	Dogleg Rate (°/100usft)	Build Rate (°/100usft)	Turn Rate (°/100usft)
0.00	0.00	0.00	0.00	0.00	0.00	0.00	0.00	0.00	0.00
100.00	0.00	0.00	100.00	0.00	0.00	0.00	0.00	0.00	0.00
200.00	0.00	0.00	200.00	0.00	0.00	0.00	0.00	0.00	0.00
250.00	0.00	0.00	250.00	0.00	0.00	0.00	0.00	0.00	0.00
Begin Nudge @ 250.00ft									
300.00	1.00	248.00	300.00	-0.16	-0.40	-0.39	2.00	2.00	0.00
400.00	3.00	248.00	399.93	-1.47	-3.64	-3.52	2.00	2.00	0.00
500.00	5.00	248.00	499.68	-4.08	-10.11	-9.79	2.00	2.00	0.00
600.00	7.00	248.00	599.13	-8.00	-19.80	-19.17	2.00	2.00	0.00
700.00	9.00	248.00	698.15	-13.21	-32.70	-31.66	2.00	2.00	0.00
800.00	11.00	248.00	796.63	-19.72	-48.80	-47.25	2.00	2.00	0.00
900.00	13.00	248.00	894.44	-27.51	-68.08	-65.91	2.00	2.00	0.00
977.50	14.55	248.00	969.71	-34.42	-85.19	-82.48	2.00	2.00	0.00
End Nudge @ 977.50ft									
1,000.00	14.55	248.00	991.48	-36.54	-90.43	-87.55	0.00	0.00	0.00
1,100.00	14.55	248.00	1,088.28	-45.95	-113.72	-110.11	0.00	0.00	0.00
1,200.00	14.55	248.00	1,185.07	-55.36	-137.01	-132.66	0.00	0.00	0.00
1,300.00	14.55	248.00	1,281.86	-64.77	-160.31	-155.21	0.00	0.00	0.00
1,400.00	14.55	248.00	1,378.66	-74.18	-183.60	-177.77	0.00	0.00	0.00
1,500.00	14.55	248.00	1,475.45	-83.59	-206.89	-200.32	0.00	0.00	0.00
1,600.00	14.55	248.00	1,572.24	-93.00	-230.19	-222.87	0.00	0.00	0.00
1,700.00	14.55	248.00	1,669.03	-102.41	-253.48	-245.42	0.00	0.00	0.00
1,783.65	14.55	248.00	1,750.00	-110.28	-272.96	-264.29	0.00	0.00	0.00
9 5/8"									
1,800.00	14.55	248.00	1,765.83	-111.82	-276.77	-267.98	0.00	0.00	0.00
1,900.00	14.55	248.00	1,862.62	-121.23	-300.07	-290.53	0.00	0.00	0.00
2,000.00	14.55	248.00	1,959.41	-130.65	-323.36	-313.08	0.00	0.00	0.00
2,100.00	14.55	248.00	2,056.21	-140.06	-346.65	-335.64	0.00	0.00	0.00
2,200.00	14.55	248.00	2,153.00	-149.47	-369.95	-358.19	0.00	0.00	0.00
2,300.00	14.55	248.00	2,249.79	-158.88	-393.24	-380.74	0.00	0.00	0.00
2,400.00	14.55	248.00	2,346.58	-168.29	-416.53	-403.30	0.00	0.00	0.00
2,500.00	14.55	248.00	2,443.38	-177.70	-439.83	-425.85	0.00	0.00	0.00
2,600.00	14.55	248.00	2,540.17	-187.11	-463.12	-448.40	0.00	0.00	0.00
2,700.00	14.55	248.00	2,636.96	-196.52	-486.41	-470.95	0.00	0.00	0.00
2,800.00	14.55	248.00	2,733.76	-205.93	-509.70	-493.51	0.00	0.00	0.00
2,900.00	14.55	248.00	2,830.55	-215.35	-533.00	-516.06	0.00	0.00	0.00
3,000.00	14.55	248.00	2,927.34	-224.76	-556.29	-538.61	0.00	0.00	0.00
3,100.00	14.55	248.00	3,024.13	-234.17	-579.58	-561.17	0.00	0.00	0.00
3,200.00	14.55	248.00	3,120.93	-243.58	-602.88	-583.72	0.00	0.00	0.00
3,300.00	14.55	248.00	3,217.72	-252.99	-626.17	-606.27	0.00	0.00	0.00
3,400.00	14.55	248.00	3,314.51	-262.40	-649.46	-628.82	0.00	0.00	0.00
3,500.00	14.55	248.00	3,411.31	-271.81	-672.76	-651.38	0.00	0.00	0.00
3,600.00	14.55	248.00	3,508.10	-281.22	-696.05	-673.93	0.00	0.00	0.00
3,700.00	14.55	248.00	3,604.89	-290.63	-719.34	-696.48	0.00	0.00	0.00
3,800.00	14.55	248.00	3,701.69	-300.04	-742.64	-719.04	0.00	0.00	0.00
3,900.00	14.55	248.00	3,798.48	-309.46	-765.93	-741.59	0.00	0.00	0.00
4,000.00	14.55	248.00	3,895.27	-318.87	-789.22	-764.14	0.00	0.00	0.00
4,100.00	14.55	248.00	3,992.06	-328.28	-812.52	-786.70	0.00	0.00	0.00
4,200.00	14.55	248.00	4,088.86	-337.69	-835.81	-809.25	0.00	0.00	0.00
4,300.00	14.55	248.00	4,185.65	-347.10	-859.10	-831.80	0.00	0.00	0.00
4,400.00	14.55	248.00	4,282.44	-356.51	-882.40	-854.35	0.00	0.00	0.00
4,500.00	14.55	248.00	4,379.24	-365.92	-905.69	-876.91	0.00	0.00	0.00
4,600.00	14.55	248.00	4,476.03	-375.33	-928.98	-899.46	0.00	0.00	0.00

Hewlett-Packard

Planning Report

Database:	EDM 5000.14 Single User Db	Local Co-ordinate Reference:	Well BOST FARM 8C-8-L
Company:	SRC ENERGY	TVD Reference:	RKB = 20' @ 4901.00usft (PD 462)
Project:	WELD COUNTY (NAD83, TRUE NORTH)	MD Reference:	RKB = 20' @ 4901.00usft (PD 462)
Site:	5N-66W-07 BOST FARM 5-7 PAD	North Reference:	True
Well:	BOST FARM 8C-8-L	Survey Calculation Method:	Minimum Curvature
Wellbore:	Wellbore #1		
Design:	Design #1		

Planned Survey									
Measured Depth (usft)	Inclination (°)	Azimuth (°)	Vertical Depth (usft)	+N/-S (usft)	+E/-W (usft)	Vertical Section (usft)	Dogleg Rate (°/100usft)	Build Rate (°/100usft)	Turn Rate (°/100usft)
4,700.00	14.55	248.00	4,572.82	-384.74	-952.27	-922.01	0.00	0.00	0.00
4,800.00	14.55	248.00	4,669.61	-394.16	-975.57	-944.57	0.00	0.00	0.00
4,900.00	14.55	248.00	4,766.41	-403.57	-998.86	-967.12	0.00	0.00	0.00
5,000.00	14.55	248.00	4,863.20	-412.98	-1,022.15	-989.67	0.00	0.00	0.00
5,100.00	14.55	248.00	4,959.99	-422.39	-1,045.45	-1,012.22	0.00	0.00	0.00
5,200.00	14.55	248.00	5,056.79	-431.80	-1,068.74	-1,034.78	0.00	0.00	0.00
5,300.00	14.55	248.00	5,153.58	-441.21	-1,092.03	-1,057.33	0.00	0.00	0.00
5,400.00	14.55	248.00	5,250.37	-450.62	-1,115.33	-1,079.88	0.00	0.00	0.00
5,500.00	14.55	248.00	5,347.16	-460.03	-1,138.62	-1,102.44	0.00	0.00	0.00
5,600.00	14.55	248.00	5,443.96	-469.44	-1,161.91	-1,124.99	0.00	0.00	0.00
5,700.00	14.55	248.00	5,540.75	-478.85	-1,185.21	-1,147.54	0.00	0.00	0.00
5,800.00	14.55	248.00	5,637.54	-488.27	-1,208.50	-1,170.09	0.00	0.00	0.00
5,900.00	14.55	248.00	5,734.34	-497.68	-1,231.79	-1,192.65	0.00	0.00	0.00
6,000.00	14.55	248.00	5,831.13	-507.09	-1,255.09	-1,215.20	0.00	0.00	0.00
6,100.00	14.55	248.00	5,927.92	-516.50	-1,278.38	-1,237.75	0.00	0.00	0.00
6,200.00	14.55	248.00	6,024.71	-525.91	-1,301.67	-1,260.31	0.00	0.00	0.00
6,300.00	14.55	248.00	6,121.51	-535.32	-1,324.97	-1,282.86	0.00	0.00	0.00
6,400.00	14.55	248.00	6,218.30	-544.73	-1,348.26	-1,305.41	0.00	0.00	0.00
6,500.00	14.55	248.00	6,315.09	-554.14	-1,371.55	-1,327.97	0.00	0.00	0.00
6,585.96	14.55	248.00	6,398.30	-562.23	-1,391.57	-1,347.35	0.00	0.00	0.00
KOP @ 6585.96ft :: DLS = 9°/100'									
6,600.00	13.40	245.87	6,411.92	-563.56	-1,394.69	-1,350.37	9.00	-8.22	-15.16
6,650.00	9.51	234.28	6,460.92	-568.34	-1,403.34	-1,358.64	9.00	-7.78	-23.19
6,700.00	6.46	209.82	6,510.45	-573.19	-1,408.09	-1,363.03	9.00	-6.10	-48.91
6,750.00	5.78	167.04	6,560.19	-578.09	-1,408.92	-1,363.51	9.00	-1.36	-85.55
6,800.00	8.09	134.17	6,609.83	-583.00	-1,405.83	-1,360.08	9.00	4.62	-65.75
6,850.00	11.74	118.59	6,659.09	-587.88	-1,398.84	-1,352.75	9.00	7.30	-31.16
6,900.00	15.83	110.63	6,707.64	-592.72	-1,387.98	-1,341.57	9.00	8.18	-15.93
6,950.00	20.10	105.92	6,755.20	-597.49	-1,373.33	-1,326.61	9.00	8.53	-9.41
7,000.00	24.44	102.82	6,801.46	-602.14	-1,354.98	-1,307.97	9.00	8.69	-6.20
7,050.00	28.83	100.61	6,846.14	-606.66	-1,333.03	-1,285.75	9.00	8.78	-4.42
7,100.00	33.25	98.95	6,888.97	-611.01	-1,307.63	-1,260.10	9.00	8.84	-3.33
7,150.00	37.68	97.63	6,929.68	-615.18	-1,278.92	-1,231.17	9.00	8.87	-2.63
7,200.00	42.13	96.56	6,968.03	-619.12	-1,247.10	-1,199.15	9.00	8.89	-2.15
7,250.00	46.59	95.65	7,003.77	-622.83	-1,212.35	-1,164.22	9.00	8.91	-1.81
7,300.00	51.05	94.87	7,036.68	-626.27	-1,174.89	-1,126.61	9.00	8.92	-1.56
7,350.00	55.51	94.18	7,066.57	-629.43	-1,134.94	-1,086.54	9.00	8.93	-1.38
7,400.00	59.98	93.57	7,093.25	-632.28	-1,092.76	-1,044.26	9.00	8.94	-1.23
7,450.00	64.46	93.00	7,116.54	-634.81	-1,048.61	-1,000.04	9.00	8.94	-1.13
7,500.00	68.93	92.48	7,136.32	-637.00	-1,002.75	-954.15	9.00	8.95	-1.05
7,550.00	73.41	91.99	7,152.46	-638.84	-955.48	-906.86	9.00	8.95	-0.99
7,600.00	77.88	91.52	7,164.85	-640.32	-907.08	-858.48	9.00	8.95	-0.94
7,650.00	82.36	91.06	7,173.43	-641.43	-857.84	-809.29	9.00	8.96	-0.91
7,700.00	86.84	90.62	7,178.13	-642.15	-808.08	-759.61	9.00	8.96	-0.89
7,723.48	88.94	90.41	7,179.00	-642.36	-784.62	-736.20	9.00	8.96	-0.88
End Build @ 7723.48ft - 5 1/2"									
7,800.00	88.94	90.41	7,180.41	-642.91	-708.12	-659.85	0.00	0.00	0.00
7,900.00	88.94	90.41	7,182.26	-643.62	-608.13	-560.08	0.00	0.00	0.00
8,000.00	88.94	90.41	7,184.10	-644.34	-508.15	-460.31	0.00	0.00	0.00
8,100.00	88.94	90.41	7,185.95	-645.05	-408.17	-360.54	0.00	0.00	0.00
8,200.00	88.94	90.41	7,187.80	-645.76	-308.19	-260.77	0.00	0.00	0.00
8,300.00	88.94	90.41	7,189.64	-646.48	-208.21	-161.00	0.00	0.00	0.00
8,400.00	88.94	90.41	7,191.49	-647.19	-108.23	-61.23	0.00	0.00	0.00
8,500.00	88.94	90.41	7,193.34	-647.90	-8.25	38.55	0.00	0.00	0.00

Hewlett-Packard

Planning Report

Database:	EDM 5000.14 Single User Db	Local Co-ordinate Reference:	Well BOST FARM 8C-8-L
Company:	SRC ENERGY	TVD Reference:	RKB = 20' @ 4901.00usft (PD 462)
Project:	WELD COUNTY (NAD83, TRUE NORTH)	MD Reference:	RKB = 20' @ 4901.00usft (PD 462)
Site:	5N-66W-07 BOST FARM 5-7 PAD	North Reference:	True
Well:	BOST FARM 8C-8-L	Survey Calculation Method:	Minimum Curvature
Wellbore:	Wellbore #1		
Design:	Design #1		

Planned Survey										
Measured Depth (usft)	Inclination (°)	Azimuth (°)	Vertical Depth (usft)	+N/-S (usft)	+E/-W (usft)	Vertical Section (usft)	Dogleg Rate (°/100usft)	Build Rate (°/100usft)	Turn Rate (°/100usft)	
8,600.00	88.94	90.41	7,195.18	-648.62	91.73	138.32	0.00	0.00	0.00	
8,700.00	88.94	90.41	7,197.03	-649.33	191.71	238.09	0.00	0.00	0.00	
8,800.00	88.94	90.41	7,198.88	-650.04	291.69	337.86	0.00	0.00	0.00	
8,900.00	88.94	90.41	7,200.73	-650.76	391.67	437.63	0.00	0.00	0.00	
9,000.00	88.94	90.41	7,202.57	-651.47	491.65	537.40	0.00	0.00	0.00	
9,100.00	88.94	90.41	7,204.42	-652.18	591.63	637.17	0.00	0.00	0.00	
9,200.00	88.94	90.41	7,206.27	-652.90	691.61	736.94	0.00	0.00	0.00	
9,300.00	88.94	90.41	7,208.11	-653.61	791.59	836.71	0.00	0.00	0.00	
9,400.00	88.94	90.41	7,209.96	-654.32	891.57	936.48	0.00	0.00	0.00	
9,500.00	88.94	90.41	7,211.81	-655.04	991.55	1,036.26	0.00	0.00	0.00	
9,600.00	88.94	90.41	7,213.65	-655.75	1,091.53	1,136.03	0.00	0.00	0.00	
9,700.00	88.94	90.41	7,215.50	-656.46	1,191.51	1,235.80	0.00	0.00	0.00	
9,800.00	88.94	90.41	7,217.35	-657.18	1,291.49	1,335.57	0.00	0.00	0.00	
9,900.00	88.94	90.41	7,219.20	-657.89	1,391.47	1,435.34	0.00	0.00	0.00	
10,000.00	88.94	90.41	7,221.04	-658.60	1,491.45	1,535.11	0.00	0.00	0.00	
10,100.00	88.94	90.41	7,222.89	-659.32	1,591.43	1,634.88	0.00	0.00	0.00	
10,200.00	88.94	90.41	7,224.74	-660.03	1,691.41	1,734.65	0.00	0.00	0.00	
10,300.00	88.94	90.41	7,226.58	-660.74	1,791.39	1,834.42	0.00	0.00	0.00	
10,400.00	88.94	90.41	7,228.43	-661.46	1,891.38	1,934.19	0.00	0.00	0.00	
10,500.00	88.94	90.41	7,230.28	-662.17	1,991.36	2,033.97	0.00	0.00	0.00	
10,600.00	88.94	90.41	7,232.12	-662.88	2,091.34	2,133.74	0.00	0.00	0.00	
10,700.00	88.94	90.41	7,233.97	-663.60	2,191.32	2,233.51	0.00	0.00	0.00	
10,800.00	88.94	90.41	7,235.82	-664.31	2,291.30	2,333.28	0.00	0.00	0.00	
10,900.00	88.94	90.41	7,237.66	-665.02	2,391.28	2,433.05	0.00	0.00	0.00	
11,000.00	88.94	90.41	7,239.51	-665.74	2,491.26	2,532.82	0.00	0.00	0.00	
11,100.00	88.94	90.41	7,241.36	-666.45	2,591.24	2,632.59	0.00	0.00	0.00	
11,200.00	88.94	90.41	7,243.21	-667.16	2,691.22	2,732.36	0.00	0.00	0.00	
11,300.00	88.94	90.41	7,245.05	-667.88	2,791.20	2,832.13	0.00	0.00	0.00	
11,400.00	88.94	90.41	7,246.90	-668.59	2,891.18	2,931.90	0.00	0.00	0.00	
11,500.00	88.94	90.41	7,248.75	-669.30	2,991.16	3,031.68	0.00	0.00	0.00	
11,600.00	88.94	90.41	7,250.59	-670.02	3,091.14	3,131.45	0.00	0.00	0.00	
11,700.00	88.94	90.41	7,252.44	-670.73	3,191.12	3,231.22	0.00	0.00	0.00	
11,800.00	88.94	90.41	7,254.29	-671.44	3,291.10	3,330.99	0.00	0.00	0.00	
11,900.00	88.94	90.41	7,256.13	-672.16	3,391.08	3,430.76	0.00	0.00	0.00	
12,000.00	88.94	90.41	7,257.98	-672.87	3,491.06	3,530.53	0.00	0.00	0.00	
12,100.00	88.94	90.41	7,259.83	-673.58	3,591.04	3,630.30	0.00	0.00	0.00	
12,200.00	88.94	90.41	7,261.67	-674.30	3,691.02	3,730.07	0.00	0.00	0.00	
12,300.00	88.94	90.41	7,263.52	-675.01	3,791.00	3,829.84	0.00	0.00	0.00	
12,400.00	88.94	90.41	7,265.37	-675.72	3,890.98	3,929.61	0.00	0.00	0.00	
12,500.00	88.94	90.41	7,267.22	-676.44	3,990.96	4,029.39	0.00	0.00	0.00	
12,600.00	88.94	90.41	7,269.06	-677.15	4,090.94	4,129.16	0.00	0.00	0.00	
12,700.00	88.94	90.41	7,270.91	-677.86	4,190.92	4,228.93	0.00	0.00	0.00	
12,800.00	88.94	90.41	7,272.76	-678.58	4,290.90	4,328.70	0.00	0.00	0.00	
12,900.00	88.94	90.41	7,274.60	-679.29	4,390.89	4,428.47	0.00	0.00	0.00	
13,000.00	88.94	90.41	7,276.45	-680.00	4,490.87	4,528.24	0.00	0.00	0.00	
13,100.00	88.94	90.41	7,278.30	-680.72	4,590.85	4,628.01	0.00	0.00	0.00	
13,200.00	88.94	90.41	7,280.14	-681.43	4,690.83	4,727.78	0.00	0.00	0.00	
13,300.00	88.94	90.41	7,281.99	-682.14	4,790.81	4,827.55	0.00	0.00	0.00	
13,400.00	88.94	90.41	7,283.84	-682.86	4,890.79	4,927.32	0.00	0.00	0.00	
13,500.00	88.94	90.41	7,285.69	-683.57	4,990.77	5,027.10	0.00	0.00	0.00	
13,600.00	88.94	90.41	7,287.53	-684.28	5,090.75	5,126.87	0.00	0.00	0.00	
13,700.59	88.94	90.41	7,289.39	-685.00	5,191.32	5,227.23	0.00	0.00	0.00	
Begin Turn to BHL @ 13700.59ft										
13,736.12	88.94	89.70	7,290.05	-685.03	5,226.84	5,262.66	2.00	0.00	-2.00	

Hewlett-Packard

Planning Report

Database:	EDM 5000.14 Single User Db	Local Co-ordinate Reference:	Well BOST FARM 8C-8-L
Company:	SRC ENERGY	TVD Reference:	RKB = 20' @ 4901.00usft (PD 462)
Project:	WELD COUNTY (NAD83, TRUE NORTH)	MD Reference:	RKB = 20' @ 4901.00usft (PD 462)
Site:	5N-66W-07 BOST FARM 5-7 PAD	North Reference:	True
Well:	BOST FARM 8C-8-L	Survey Calculation Method:	Minimum Curvature
Wellbore:	Wellbore #1		
Design:	Design #1		

Planned Survey									
Measured Depth (usft)	Inclination (°)	Azimuth (°)	Vertical Depth (usft)	+N/-S (usft)	+E/-W (usft)	Vertical Section (usft)	Dogleg Rate (°/100usft)	Build Rate (°/100usft)	Turn Rate (°/100usft)
End Turn @ 13736.12ft									
13,800.00	88.94	89.70	7,291.23	-684.70	5,290.71	5,326.34	0.00	0.00	0.00
13,900.00	88.94	89.70	7,293.07	-684.17	5,390.69	5,426.02	0.00	0.00	0.00
14,000.00	88.94	89.70	7,294.92	-683.64	5,490.67	5,525.70	0.00	0.00	0.00
14,100.00	88.94	89.70	7,296.77	-683.12	5,590.65	5,625.38	0.00	0.00	0.00
14,200.00	88.94	89.70	7,298.61	-682.59	5,690.64	5,725.07	0.00	0.00	0.00
14,300.00	88.94	89.70	7,300.46	-682.06	5,790.62	5,824.75	0.00	0.00	0.00
14,400.00	88.94	89.70	7,302.31	-681.54	5,890.60	5,924.43	0.00	0.00	0.00
14,500.00	88.94	89.70	7,304.15	-681.01	5,990.58	6,024.11	0.00	0.00	0.00
14,600.00	88.94	89.70	7,306.00	-680.48	6,090.56	6,123.80	0.00	0.00	0.00
14,700.00	88.94	89.70	7,307.85	-679.96	6,190.54	6,223.48	0.00	0.00	0.00
14,800.00	88.94	89.70	7,309.70	-679.43	6,290.53	6,323.16	0.00	0.00	0.00
14,900.00	88.94	89.70	7,311.54	-678.90	6,390.51	6,422.85	0.00	0.00	0.00
15,000.00	88.94	89.70	7,313.39	-678.37	6,490.49	6,522.53	0.00	0.00	0.00
15,100.00	88.94	89.70	7,315.24	-677.85	6,590.47	6,622.21	0.00	0.00	0.00
15,200.00	88.94	89.70	7,317.08	-677.32	6,690.45	6,721.89	0.00	0.00	0.00
15,300.00	88.94	89.70	7,318.93	-676.79	6,790.43	6,821.58	0.00	0.00	0.00
15,400.00	88.94	89.70	7,320.78	-676.27	6,890.42	6,921.26	0.00	0.00	0.00
15,500.00	88.94	89.70	7,322.62	-675.74	6,990.40	7,020.94	0.00	0.00	0.00
15,600.00	88.94	89.70	7,324.47	-675.21	7,090.38	7,120.62	0.00	0.00	0.00
15,700.00	88.94	89.70	7,326.32	-674.69	7,190.36	7,220.31	0.00	0.00	0.00
15,800.00	88.94	89.70	7,328.16	-674.16	7,290.34	7,319.99	0.00	0.00	0.00
15,900.00	88.94	89.70	7,330.01	-673.63	7,390.32	7,419.67	0.00	0.00	0.00
16,000.00	88.94	89.70	7,331.86	-673.11	7,490.30	7,519.35	0.00	0.00	0.00
16,100.00	88.94	89.70	7,333.70	-672.58	7,590.29	7,619.04	0.00	0.00	0.00
16,200.00	88.94	89.70	7,335.55	-672.05	7,690.27	7,718.72	0.00	0.00	0.00
16,300.00	88.94	89.70	7,337.40	-671.53	7,790.25	7,818.40	0.00	0.00	0.00
16,400.00	88.94	89.70	7,339.25	-671.00	7,890.23	7,918.08	0.00	0.00	0.00
16,500.00	88.94	89.70	7,341.09	-670.47	7,990.21	8,017.77	0.00	0.00	0.00
16,600.00	88.94	89.70	7,342.94	-669.95	8,090.19	8,117.45	0.00	0.00	0.00
16,700.00	88.94	89.70	7,344.79	-669.42	8,190.18	8,217.13	0.00	0.00	0.00
16,800.00	88.94	89.70	7,346.63	-668.89	8,290.16	8,316.81	0.00	0.00	0.00
16,900.00	88.94	89.70	7,348.48	-668.37	8,390.14	8,416.50	0.00	0.00	0.00
17,000.00	88.94	89.70	7,350.33	-667.84	8,490.12	8,516.18	0.00	0.00	0.00
17,100.00	88.94	89.70	7,352.17	-667.31	8,590.10	8,615.86	0.00	0.00	0.00
17,200.00	88.94	89.70	7,354.02	-666.79	8,690.08	8,715.55	0.00	0.00	0.00
17,300.00	88.94	89.70	7,355.87	-666.26	8,790.06	8,815.23	0.00	0.00	0.00
17,400.00	88.94	89.70	7,357.71	-665.73	8,890.05	8,914.91	0.00	0.00	0.00
17,500.00	88.94	89.70	7,359.56	-665.20	8,990.03	9,014.59	0.00	0.00	0.00
17,600.00	88.94	89.70	7,361.41	-664.68	9,090.01	9,114.28	0.00	0.00	0.00
17,686.20	88.94	89.70	7,363.00	-664.22	9,176.19	9,200.20	0.00	0.00	0.00
TD Well @ 17686.20ft									

Casing Points					
Measured Depth (usft)	Vertical Depth (usft)	Name		Casing Diameter (")	Hole Diameter (")
1,783.65	1,750.00	9 5/8"		9-5/8	13-1/2
7,723.48	7,179.00	5 1/2"		5-1/2	8-1/2

Hewlett-Packard

Planning Report

Database:	EDM 5000.14 Single User Db	Local Co-ordinate Reference:	Well BOST FARM 8C-8-L
Company:	SRC ENERGY	TVD Reference:	RKB = 20' @ 4901.00usft (PD 462)
Project:	WELD COUNTY (NAD83, TRUE NORTH)	MD Reference:	RKB = 20' @ 4901.00usft (PD 462)
Site:	5N-66W-07 BOST FARM 5-7 PAD	North Reference:	True
Well:	BOST FARM 8C-8-L	Survey Calculation Method:	Minimum Curvature
Wellbore:	Wellbore #1		
Design:	Design #1		

Plan Annotations					
Measured Depth (usft)	Vertical Depth (usft)	Local Coordinates		Comment	
		+N/-S (usft)	+E/-W (usft)		
250.00	250.00	0.00	0.00	Begin Nudge @ 250.00ft	
977.50	969.71	-34.42	-85.19	End Nudge @ 977.50ft	
6,585.96	6,398.30	-562.23	-1,391.57	KOP @ 6585.96ft :: DLS = 9°/100'	
7,723.48	7,179.00	-642.36	-784.62	End Build @ 7723.48ft	
13,700.59	7,289.39	-685.00	5,191.32	Begin Turn to BHL @ 13700.59ft	
13,736.12	7,290.05	-685.03	5,226.84	End Turn @ 13736.12ft	
17,686.20	7,363.00	-664.22	9,176.19	TD Well @ 17686.20ft	