

# Data Collection Report

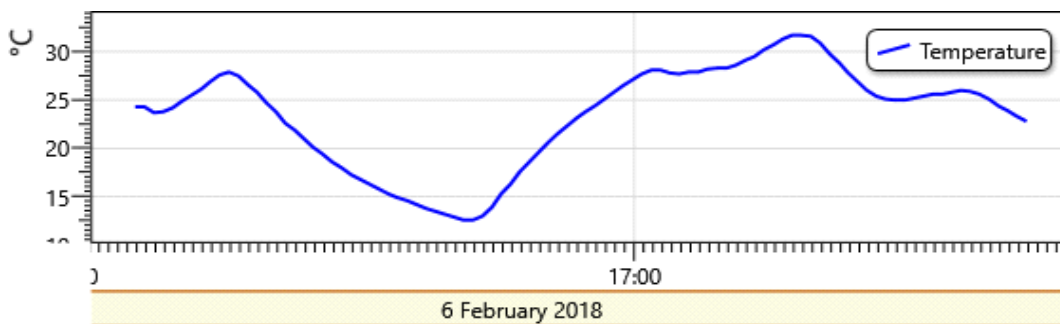
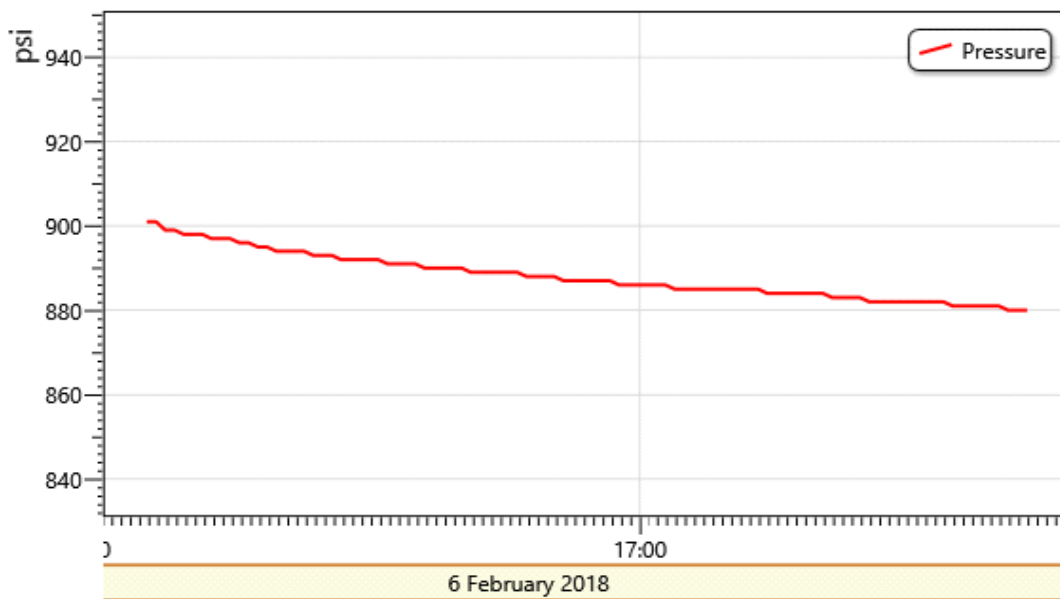
## Gauge Information

Model	ADT680
SN	21816220026
Range	(0-10000)psi
Unit	psi

## Record Information

Start Time	2018-02-06 16:06:47
End Time	2018-02-06 17:41:47
Interval	00:03:00.0
Number	96
MaxValue	901
MinValue	880
AvgValue	888
RecordName	
RecordNumber	542

Pressure Chart



Notes : Temperature display is the compensation temperature

## Record Info

Model	ADT680
SN	21816220026
Range	(0-10000)psi
Start Time	2018-02-06 16:06:47
End Time	2018-02-06 17:41:47
Interval	00:03:60.0
Number	96
Unit	psi
MaxValue	901
MinValue	880
AvgValue	888
RecordName	
RecordNumber	542

## Pressure Data

ID	DateTime	Pressure	Unit	Temperature(°C)
324	2/6/2018 4:06:47 PM	901	psi	24.3
325	2/6/2018 4:07:47 PM	901	psi	24.3
326	2/6/2018 4:08:47 PM	899	psi	23.7
327	2/6/2018 4:09:47 PM	899	psi	23.8
328	2/6/2018 4:10:47 PM	898	psi	24.2
329	2/6/2018 4:11:47 PM	898	psi	24.9
330	2/6/2018 4:12:47 PM	898	psi	25.5
331	2/6/2018 4:13:47 PM	897	psi	26.1
332	2/6/2018 4:14:47 PM	897	psi	26.9
333	2/6/2018 4:15:47 PM	897	psi	27.6
334	2/6/2018 4:16:47 PM	896	psi	27.9
335	2/6/2018 4:17:47 PM	896	psi	27.5
336	2/6/2018 4:18:47 PM	895	psi	26.6
337	2/6/2018 4:19:47 PM	895	psi	25.8
338	2/6/2018 4:20:47 PM	894	psi	24.7
339	2/6/2018 4:21:47 PM	894	psi	23.8
340	2/6/2018 4:22:47 PM	894	psi	22.6
341	2/6/2018 4:23:47 PM	894	psi	21.9
342	2/6/2018 4:24:47 PM	893	psi	21.0

343	2/6/2018 4:25:47 PM	893	psi	20.1
344	2/6/2018 4:26:47 PM	893	psi	19.4
345	2/6/2018 4:27:47 PM	892	psi	18.6
346	2/6/2018 4:28:47 PM	892	psi	18.0
347	2/6/2018 4:29:47 PM	892	psi	17.3
348	2/6/2018 4:30:47 PM	892	psi	16.8
349	2/6/2018 4:31:47 PM	892	psi	16.3
350	2/6/2018 4:32:47 PM	891	psi	15.8
351	2/6/2018 4:33:47 PM	891	psi	15.3
352	2/6/2018 4:34:47 PM	891	psi	14.9
353	2/6/2018 4:35:47 PM	891	psi	14.6
354	2/6/2018 4:36:47 PM	890	psi	14.2
355	2/6/2018 4:37:47 PM	890	psi	13.8
356	2/6/2018 4:38:47 PM	890	psi	13.5
357	2/6/2018 4:39:47 PM	890	psi	13.2
358	2/6/2018 4:40:47 PM	890	psi	12.9
359	2/6/2018 4:41:47 PM	889	psi	12.6
360	2/6/2018 4:42:47 PM	889	psi	12.6
361	2/6/2018 4:43:47 PM	889	psi	13.0
362	2/6/2018 4:44:47 PM	889	psi	13.9
363	2/6/2018 4:45:47 PM	889	psi	15.3
364	2/6/2018 4:46:47 PM	889	psi	16.3
365	2/6/2018 4:47:47 PM	888	psi	17.6
366	2/6/2018 4:48:47 PM	888	psi	18.6
367	2/6/2018 4:49:47 PM	888	psi	19.6
368	2/6/2018 4:50:47 PM	888	psi	20.6
369	2/6/2018 4:51:47 PM	887	psi	21.5
370	2/6/2018 4:52:47 PM	887	psi	22.3
371	2/6/2018 4:53:47 PM	887	psi	23.1
372	2/6/2018 4:54:47 PM	887	psi	23.8
373	2/6/2018 4:55:47 PM	887	psi	24.4
374	2/6/2018 4:56:47 PM	887	psi	25.1
375	2/6/2018 4:57:47 PM	886	psi	25.8
376	2/6/2018 4:58:47 PM	886	psi	26.5
377	2/6/2018 4:59:47 PM	886	psi	27.1
378	2/6/2018 5:00:47 PM	886	psi	27.7
379	2/6/2018 5:01:47 PM	886	psi	28.1
380	2/6/2018 5:02:47 PM	886	psi	28.1
381	2/6/2018 5:03:47 PM	885	psi	27.8
382	2/6/2018 5:04:47 PM	885	psi	27.7
383	2/6/2018 5:05:47 PM	885	psi	27.9
384	2/6/2018 5:06:47 PM	885	psi	27.9
385	2/6/2018 5:07:47 PM	885	psi	28.2
386	2/6/2018 5:08:47 PM	885	psi	28.3
387	2/6/2018 5:09:47 PM	885	psi	28.3
388	2/6/2018 5:10:47 PM	885	psi	28.6
389	2/6/2018 5:11:47 PM	885	psi	29.1
390	2/6/2018 5:12:47 PM	885	psi	29.5
391	2/6/2018 5:13:47 PM	884	psi	30.2
392	2/6/2018 5:14:47 PM	884	psi	30.7
393	2/6/2018 5:15:47 PM	884	psi	31.3

394	2/6/2018 5:16:47 PM	884	psi	31.7
395	2/6/2018 5:17:47 PM	884	psi	31.7
396	2/6/2018 5:18:47 PM	884	psi	31.6
397	2/6/2018 5:19:47 PM	884	psi	30.9
398	2/6/2018 5:20:47 PM	883	psi	29.8
399	2/6/2018 5:21:47 PM	883	psi	28.9
400	2/6/2018 5:22:47 PM	883	psi	27.8
401	2/6/2018 5:23:47 PM	883	psi	26.9
402	2/6/2018 5:24:47 PM	882	psi	26.0
403	2/6/2018 5:25:47 PM	882	psi	25.4
404	2/6/2018 5:26:47 PM	882	psi	25.1
405	2/6/2018 5:27:47 PM	882	psi	25.0
406	2/6/2018 5:28:47 PM	882	psi	25.0
407	2/6/2018 5:29:47 PM	882	psi	25.2
408	2/6/2018 5:30:47 PM	882	psi	25.4
409	2/6/2018 5:31:47 PM	882	psi	25.6
410	2/6/2018 5:32:47 PM	882	psi	25.6
411	2/6/2018 5:33:47 PM	881	psi	25.8
412	2/6/2018 5:34:47 PM	881	psi	26.0
413	2/6/2018 5:35:47 PM	881	psi	25.9
414	2/6/2018 5:36:47 PM	881	psi	25.6
415	2/6/2018 5:37:47 PM	881	psi	25.1
416	2/6/2018 5:38:47 PM	881	psi	24.4
417	2/6/2018 5:39:47 PM	880	psi	23.9
418	2/6/2018 5:40:47 PM	880	psi	23.3
419	2/6/2018 5:41:47 PM	880	psi	22.8