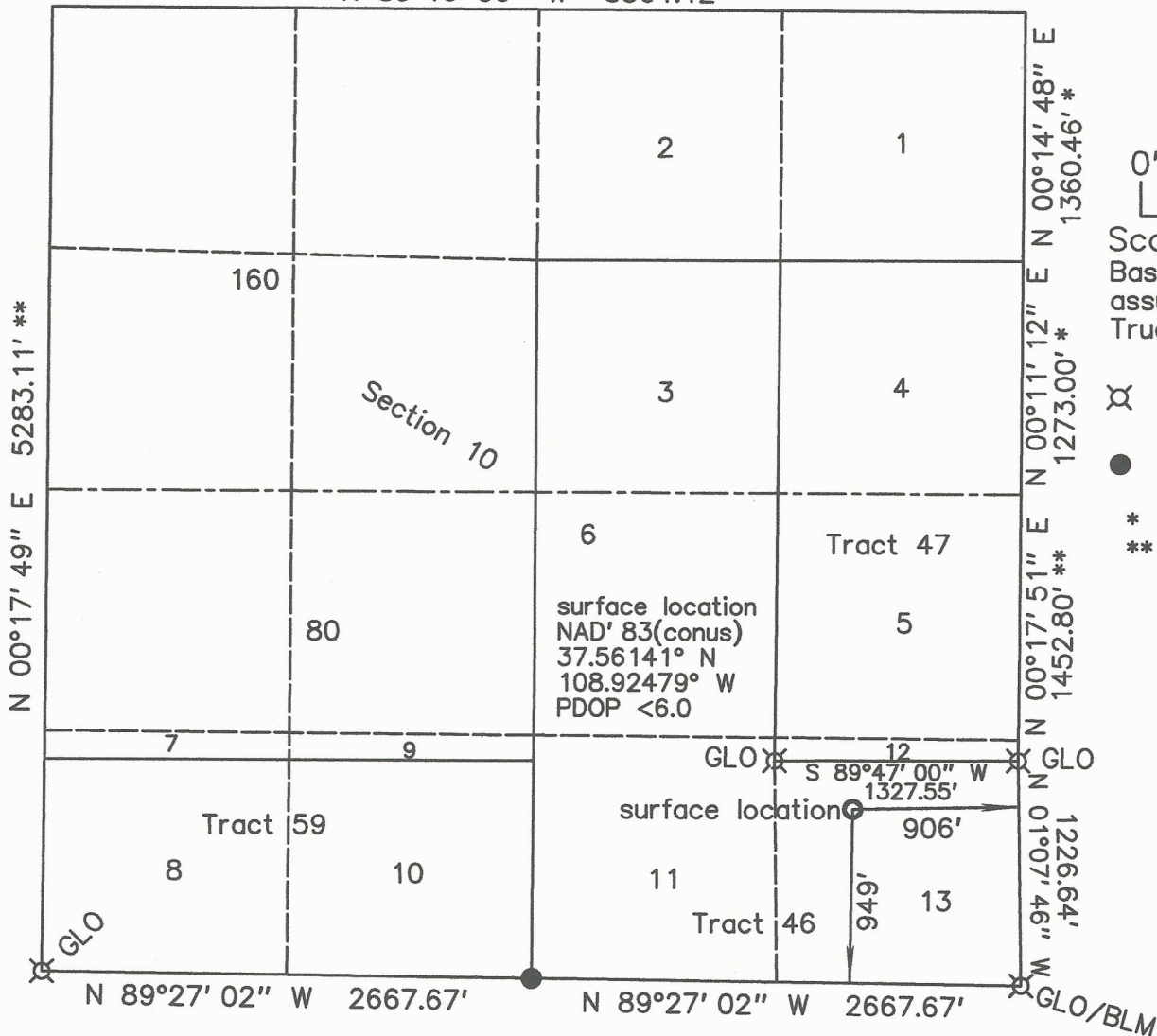


N 89°46' 00" W 5301.12' \*



0' 1000'

Scale: 1" = 1000'

Basis of bearing is assumed from GPS True North as shown.

X standard monument

● set standard monument

\* from record plat  
\*\* calculatedKINDER MORGAN CO2 COMPANY, LP  
CB-4949' FSL & 906' FEL (surface location)  
6633.4' grd. el. NAVD '88 (from OPUS)  
Section 10, T.38 N., R.19 W., NMPM  
Montezuma County, CO

## Notes:

- 1) Distances/dimensions are perpendicular to section/aliquot lines.
- 2) Surface use is dryland farming.
- 3) GPS was corrected with OPUS, GPS operator was R.J. Caffey, CO LS 36562.
- 4) There are no dwellings 1000 feet.

date of survey : 12/02/2014  
date of plat : 12/03/2014  
& 12/04/2014 & 08/29/2017

KNOW ALL MEN BY THESE PRESENTS that I, GERALD G. HUDDLESTON, do hereby certify that this plat was prepared from field notes of an actual survey made by me or under my supervision and that the same is true and accurate to the best of my knowledge and belief.

