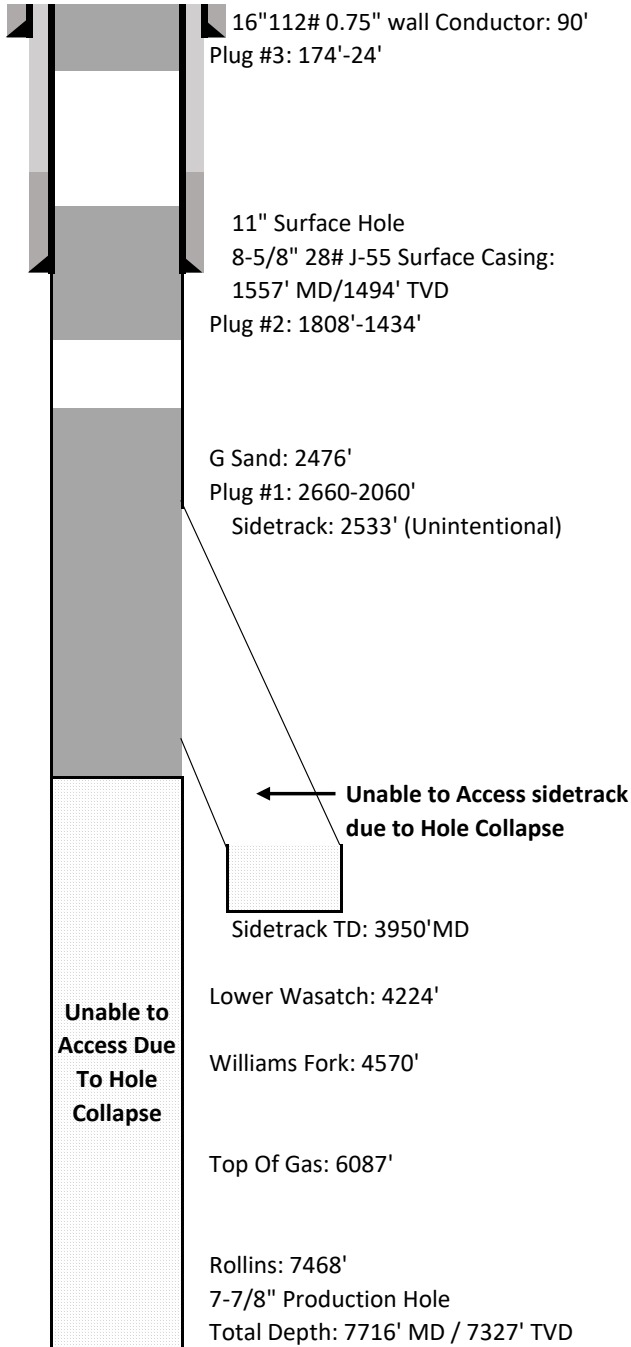


Laramie Energy LLC

Actual P&A Wellbore Schematic



Well Name	Nichols 0994-24-16W
API No.	05-077-10384-00
Diagram Date	4/2/2018
Legal Location	SENW 24 9S 94W 6th PM
GPS Coordinates	Lat 39.263308
	Long -107.830872
Field	Brush Creek
County	Mesa
State	Colorado
G.L. Elevation	7212'
K.B. Elevation	7236'

Abandonment Plug Details

Plug #1

229skts of 15.8ppg Neat G Cement at 1.15 ft3/ft
2660'-2060' - Did not tag

Plug #2

175skts of 15.8ppg Neat G Cement at 1.16 ft3/ft
1808'-1434' - Verified top by tagging

Plug #3

45skts of 15.8ppg Neat G Cement at 1.16 ft3/ft
174'-24'

Casing Cement Details

Conductor Pipe

16" 112# 0.750" wall set at 60'
4yds of concrete to surface

Surface Casing

8-5/8" 28# J-55 set at 1557'
Lead: 170skts of 12.0ppg
ALTCem S100-12
2.52cf/sk
Tail: 107skts of 12.5ppg
ALTCem S100-12
2.22cf/sk

32bbbls of good cement to surface

All depths are referenced to KB

Not to scale