

HALLIBURTON

iCem[®] Service

TERRA ENERGY PARTNERS-EBUS

For: Terra

Date: Friday, January 26, 2018

WARE SR 524-12Production

API# 05-045-23446

Sincerely,

Grand Junction Cement Engineering

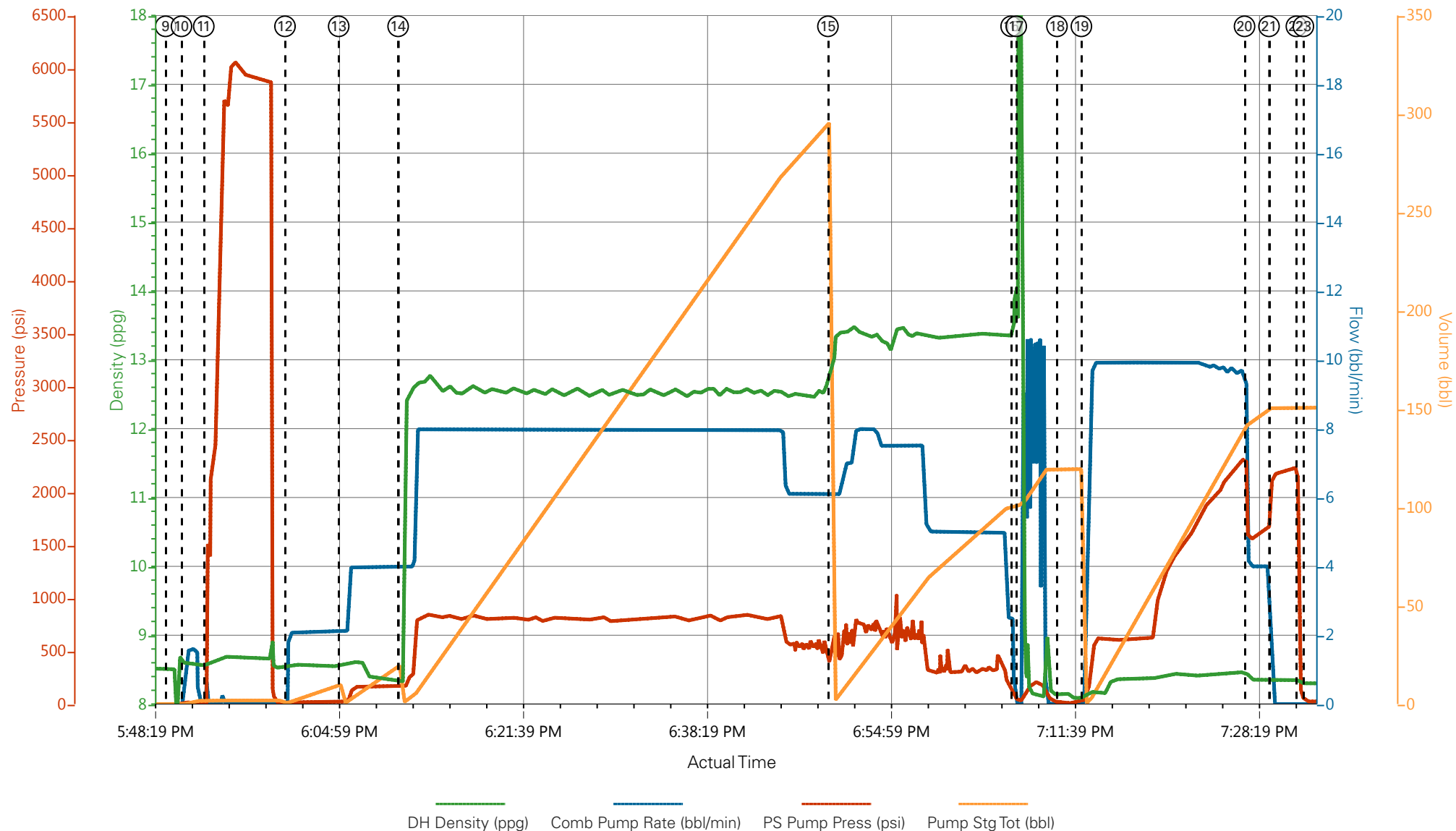
2.0 Real-Time Job Summary

2.1 Job Event Log

| Type | Seq. No. | Graph Label | Date | Time | Source | Combined Pump Rate (bbl/min) | Downhole Density (ppg) | Pass-Side Pump Pressure (psi) | Pump Stage Total (bbl) | Comments |
|-------|----------|---------------------------------------|------------|----------|--------|---------------------------------|---------------------------|----------------------------------|---------------------------|---|
| Event | 1 | Call Out | 01/26/2018 | 00:00:00 | USER | | | | | REQUESTED ON LOCATION TIME 1400, ELITE #1 |
| Event | 2 | Pre-Convoy Safety Meeting | 01/26/2018 | 11:30:00 | USER | | | | | ALL HES EMPLOYEES |
| Event | 3 | Arrive At Loc | 01/26/2018 | 13:30:00 | USER | | | | | ARRIVED ON LOCATION 1/2 HOUR EARLY, RIG RUNNING CASING |
| Event | 4 | Meet With Company Rep | 01/26/2018 | 13:45:00 | USER | | | | | COMPANY REP OFFERED SDS / WATER TEST: TEMP: 52 PH: 7 CHLORIDES 500 |
| Event | 5 | Assessment Of Location Safety Meeting | 01/26/2018 | 14:00:00 | USER | | | | | ALL HES EMPLOYEES |
| Event | 6 | Pre-Rig Up Safety Meeting | 01/26/2018 | 14:10:00 | USER | | | | | ALL HES EMPLOYEES |
| Event | 7 | Rig-Up Equipment | 01/26/2018 | 14:20:00 | USER | | | | | 1 HT-400 PUMP TRUCK 1 660 BULK TRUCK 1 SILO 1 F-550 PICKUP |
| Event | 8 | Pre-Job Safety Meeting | 01/26/2018 | 17:30:00 | USER | | | | | ALL HES EMPLOYEES AN RIG CCREW RIG CIRCULATED @ 10 BPM WITH 1000 CFM AIR PRIOR TO JOB, GAS @ 19 PRIOR TO STARTING THE JOB |
| Event | 9 | Start Job | 01/26/2018 | 17:49:33 | COM5 | | | | | TD:9761 TP: 9755 SJ: 27.53 CSG: 4 1/2 11.6# P-110 OH: 8 3/4 SURFACE SHOE @ 1139, 9 5/8 32.3# H-40 MUD WT: 9.2 PPG |
| Event | 10 | Prime Lines | 01/26/2018 | 17:51:00 | USER | 2.0 | 8.33 | 25 | 3.0 | PRIME LINES WITH 3 BBLS FRESH WATER |
| Event | 11 | Test Lines | 01/26/2018 | 17:53:01 | COM5 | 0.0 | 8.33 | 6011 | 3.0 | PRESSURE TEST OK |
| Event | 12 | Pump Fresh Water Spacer | 01/26/2018 | 18:00:22 | COM5 | 2.0 | 8.33 | 60 | 10 | PUMP 10 BBL FRESH WATER SPACER |
| Event | 13 | Pump Mud Flush III Spacer | 01/26/2018 | 18:05:14 | COM5 | 4.0 | 8.4 | 175 | 20 | PUMP 20 BBL MUD FLUSH III SPACER |

| | | | | | | | | | | |
|-------|----|-----------------------------|------------|----------|------|------|------|------|-------|--|
| Event | 14 | Pump Lead Cement | 01/26/2018 | 18:10:37 | COM5 | 8.0 | 12.5 | 850 | 280 | 810 SKS 12.3 PPG 1.94 YIELD 9.6 GAL/SK LEAD CEMENT WEIGHT VERIFIED VIA PRESSURIZED MUD SCALES |
| Event | 15 | Pump Tail Cement | 01/26/2018 | 18:49:33 | COM5 | 8.0 | 13.3 | 760 | 81.6 | 265 SKS 13.3 PPG 1.73 YIELD 7.81 GAL/SK TAIL CEMENT WEIGHT VERIFIED VIA PRESSURIZED MUD SCALES |
| Event | 16 | Shutdown | 01/26/2018 | 19:06:09 | COM5 | | | | | SHUTDOWN TO CLEAN PUMPS AND LINES |
| Event | 17 | Clean Lines | 01/26/2018 | 19:06:37 | USER | | 8.33 | | 10 | CLEAN PUMPS AND LINES TO PIT AND BLOW AIR FROM RIG FLOOR TO PIT |
| Event | 18 | Drop Top Plug | 01/26/2018 | 19:10:18 | COM5 | | | | | PLUG AWAY NO PROBLEMS |
| Event | 19 | Pump Displacement | 01/26/2018 | 19:12:31 | COM5 | 10.0 | 8.4 | 2300 | 150.8 | 1 GAL MMCR 3 #S BE-6 14 BAGS KCL, FRESH WATER DISPLACEMENT |
| Event | 20 | Slow Rate | 01/26/2018 | 19:27:18 | USER | 4.0 | 8.4 | 1690 | 140 | SLOW RATE TO BUMP PLUG |
| Event | 21 | Bump Plug | 01/26/2018 | 19:29:31 | USER | 4.0 | 8.4 | 2232 | 150.8 | PSI BEFORE BUMPING PLUG @ 1690 BUMPED PLUG UP TO 2232 PSI |
| Event | 22 | Check Floats | 01/26/2018 | 19:32:00 | USER | | | | | FLOATS HELD, 1 1/4 BBL BACK TO DISPLACEMENT TANKS |
| Event | 23 | End Job | 01/26/2018 | 19:32:37 | COM5 | | | | | MAINTAINED RETURNS THROUGHOUT JOB, PIPE STATIC THROUGHOUT JOB |
| Event | 24 | Pre-Rig Down Safety Meeting | 01/26/2018 | 19:50:00 | USER | | | | | ALL HES EMPLOYEES |
| Event | 25 | Rig-Down Equipment | 01/26/2018 | 19:55:00 | USER | | | | | |
| Event | 26 | Pre-Convoy Safety Meeting | 01/26/2018 | 20:55:00 | USER | | | | | ALL HES EMPLOYEES |
| Event | 27 | Crew Leave Location | 01/26/2018 | 21:00:00 | USER | | | | | THANK YOU FOR USING HALLIBURTON CEMENT, DUSTIN SMITH AND CREW |

TEP - WARE SR 524-12 - 4 1/2 PRODUCTION



- | | | | | |
|---|---------------------------|-----------------------------|--------------------------------|------------------------------|
| ① Call Out | ⑦ Rig-Up Equipment | ⑬ Pump Mud Flush III Spacer | ⑲ Pump Displacement | 25 Rig-Down Equipment |
| ② Pre-Convoy Safety Meeting | ⑧ Pre-Job Safety Meeting | ⑭ Pump Lead Cement | 20 Slow Rate | 26 Pre-Convoy Safety Meeting |
| ③ Arrive At Loc | ⑨ Start Job | ⑮ Pump Tail Cement | 21 Bump Plug | 27 Crew Leave Location |
| ④ Meet With Company Rep | ⑩ Prime Lines | ⑯ Shutdown | 22 Check Floats | |
| ⑤ Assessment Of Location Safety Meeting | ⑪ Test Lines | ⑰ Clean Lines | 23 End Job | |
| ⑥ Pre-Rig Up Safety Meeting | ⑫ Pump Fresh Water Spacer | ⑱ Drop Top Plug | 24 Pre-Rig Down Safety Meeting | |

▼ HALLIBURTON | iCem® Service

Created: 2018-01-26 11:07:09, Version: 4.2.393

Edit

Customer: TERRA ENERGY PARTNERS-EBUS
 Representative: ROBERT BROWN / NATHAN BURR

Job Date: 1/26/2018 3:20:48 PM
 Sales Order #: 0904590438

Well: WARE SR 524-12
 ELITE# 1: DUSTIN SMITH / JAMES LEIST

TEP - WARE SR 524-12 - 4 1/2 PRODUCTION

