

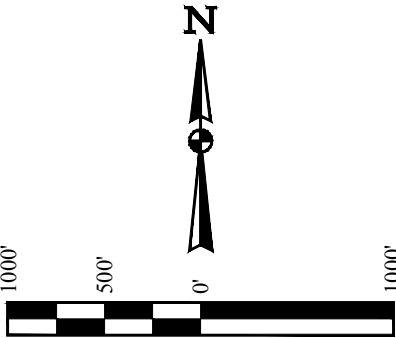
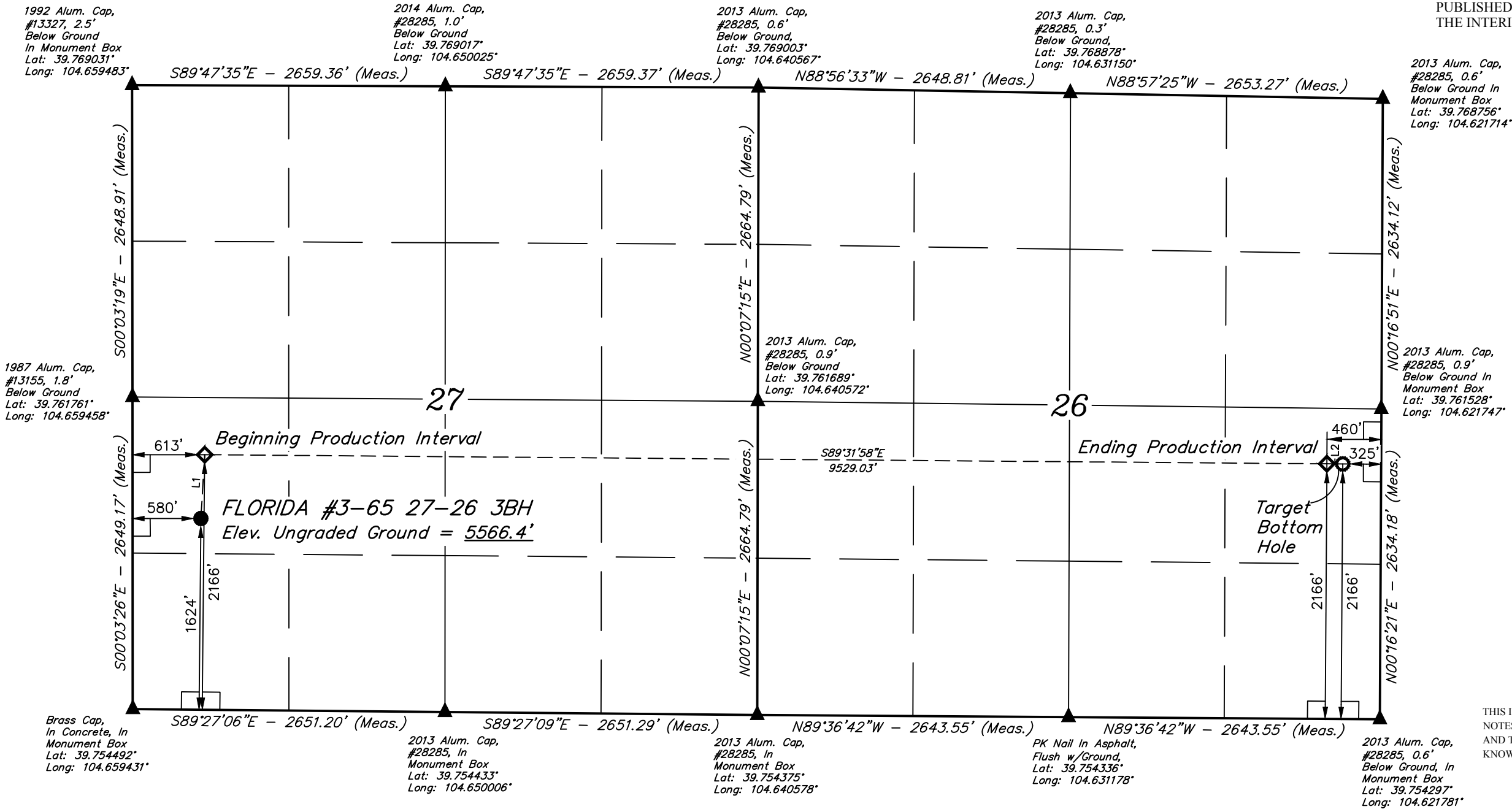
T3S, R65W, 6th P.M.

ConocoPhillips Company

FLORIDA #3-65 27-26 3BH
NW 1/4 SW 1/4, SECTION 27, T3S, R65W, 6th P.M.
ADAMS COUNTY, COLORADO

BASIS OF BEARINGS
BASIS OF ELEVATION

BENCHMARK 374 LOCATED ON THE SECTION LINE BETWEEN
SECTIONS 12 & 13, T5S, R64W, 6th. P.M., TAKEN FROM 1988
PUBLISHED DATUM BY THE UNITED STATES DEPARTMENT OF
THE INTERIOR, GEOLOGICAL SURVEY AS BEING 6054.61 FEET.



LINE TABLE		
LINE	DIRECTION	LENGTH
L1	N03°25'30"E	542.71'
L2	S89°36'42"E	135.00'

CERTIFICATE
THIS IS TO CERTIFY THAT THE ABOVE PLAT WAS PREPARED FROM FIELD NOTES OF ACTUAL SURVEYS MADE BY ME OR UNDER MY SUPERVISION AND THAT THE SAME ARE TRUE AND CORRECT TO THE BEST OF MY KNOWLEDGE AND BELIEF.

REGISTERED LAND SURVEYOR
REGISTRATION NO. 28285
STATE OF COLORADO
JULY 15-18

PDOP = 1.9

REV: 2 02-14-18 C.IVIE (BPI CHANGE)

LEGEND:
= 90° SYMBOL
● = PROPOSED WELLHEAD.
○ = TARGET BOTTOM HOLE.
◇ = PRODUCTION INTERVAL.
▲ = SECTION CORNERS LOCATED. (NAD 83)

NAD 83 (SURFACE LOCATION)	NAD 83 (BEG. PROD. INTERVAL)	NAD 83 (ENDING PROD. INTERVAL)	NAD 83 (TARGET BOTTOM HOLE)
LATITUDE = 39°45'32.17" (39.758935)	LATITUDE = 39°45'37.52" (39.760422)	LATITUDE = 39°45'36.90" (39.760249)	LATITUDE = 39°45'36.89" (39.760247)
LONGITUDE = 104°39'26.59" (104.657385)	LONGITUDE = 104°39'26.18" (104.657273)	LONGITUDE = 104°37'24.20" (104.623389)	LONGITUDE = 104°37'22.47" (104.622909)
NAD 27 (SURFACE LOCATION)	NAD 27 (BEG. PROD. INTERVAL)	NAD 27 (ENDING PROD. INTERVAL)	NAD 27 (TARGET BOTTOM HOLE)
LATITUDE = 39°45'32.21" (39.758948)	LATITUDE = 39°45'37.57" (39.760435)	LATITUDE = 39°45'36.95" (39.760263)	LATITUDE = 39°45'36.94" (39.760261)
LONGITUDE = 104°39'24.70" (104.656861)	LONGITUDE = 104°39'24.30" (104.656749)	LONGITUDE = 104°37'22.32" (104.622866)	LONGITUDE = 104°37'20.59" (104.622386)
STATE PLANE NAD 83 (CO. NORTH)	STATE PLANE NAD 83 (CO. NORTH)	STATE PLANE NAD 83 (CO. NORTH)	STATE PLANE NAD 83 (CO. NORTH)
N: 1156159.52 E: 3236892.55	N: 1156701.43 E: 3236918.88	N: 1156730.78 E: 3246445.11	N: 1156731.38 E: 3246580.07
STATE PLANE NAD 27 (CO. NORTH)	STATE PLANE NAD 27 (CO. NORTH)	STATE PLANE NAD 27 (CO. NORTH)	STATE PLANE NAD 27 (CO. NORTH)
N: 156162.85 E: 2237045.93	N: 156704.76 E: 2237072.25	N: 156734.24 E: 2246598.38	N: 156734.85 E: 2246733.34



UELS, LLC
Corporate Office * 85 South 200 East
Vernal, UT 84078 * (435) 789-1017

SURVEYED BY	DALLAS NIELSEN	10-27-17	SCALE
DRAWN BY	K.B.	07-06-17	1" = 1000'

WELL LOCATION PLAT