

HALLIBURTON

iCem[®] Service

SYNERGY RESOURCES CORPORATION

Date: Sunday, June 25, 2017

Leffler 40C-23-L Production

Job Date: Saturday, June 17, 2017

Sincerely,

Julia Nichols

Legal Notice

Disclaimer:

All information in this report is provided subject to the terms and conditions which govern the services provided by Halliburton. Halliburton personnel use their best efforts in gathering information and their best judgment in interpreting it, but any interpretation, research, analysis or recommendation furnished by Halliburton are opinions based upon inferences from measurements and empirical relationships and assumptions, which inferences and empirical relationships and assumptions are not infallible, and with respect to which professionals in the industry may differ. Accordingly, HALLIBURTON IS UNABLE TO GUARANTEE THE ACCURACY OF ANY CHART INTERPRETATION, RESEARCH ANALYSIS, OR JOB RECOMMENDATION and any interpretation or recommendation is not for use of or reliance upon by any third party. The customer has full responsibility for any of its decisions which are based on the information provided in this report.

Table of Contents

1.0 Cementing Job Summary 4

 1.1 Executive Summary4

2.0 Real-Time Job Summary 7

 2.1 Job Event Log7

3.0 Attachments..... 9

 3.1 Custom Results – Job Chart with Events9

 3.2 Custom Results – Job Chart with Events10

1.0 Cementing Job Summary

1.1 Executive Summary

Halliburton appreciates the opportunity to perform the cementing services on the **Leffler 40C-23-L** cement **Production** casing job. A pre-job safety meeting was held before the job where details of the job were discussed, potential safety hazards were reviewed, and environmental compliance procedures were outlined.

Approximately 30 barrels of cement were returned to surface.

Halliburton maintains a continuous quality improvement process and appreciates any comments or suggestions that you may have. Halliburton again thanks you for the opportunity to perform service work on this well. We hope to be your solutions provider for future projects.

Respectfully,

Halliburton [Ft. Lupton]

HALLIBURTON

*Cementing Job Summary**The Road to Excellence Starts with Safety*

Sold To #: 359915		Ship To #: 3800204		Quote #:		Sales Order #: 0904084880				
Customer: SYNERGY RESOURCES CORPORATION				Customer Rep:						
Well Name: LEFFLER		Well #: 40C-23-L		API/UWI #: 05-123-44826-00						
Field: WATTENBERG		City (SAP): GREELEY		County/Parish: WELD		State: COLORADO				
Legal Description: SE NE-21-6N-66W-2021FNL-275FEL										
Contractor: Precision				Rig/Platform Name/Num: Precision 562						
Job BOM: 7523 7523										
Well Type: HORIZONTAL OIL										
Sales Person: HALAMERICA\HB41307				Srvc Supervisor: Luke Kosakewich						
Job										
Formation Name										
Formation Depth (MD)		Top		Bottom						
Form Type				BHST						
Job depth MD		17810ft		Job Depth TVD						
Water Depth				Wk Ht Above Floor						
Perforation Depth (MD)		From		To						
Well Data										
Description	New / Used	Size in	ID in	Weight lbm/ft	Thread	Grade	Top MD ft	Bottom MD ft	Top TVD ft	Bottom TVD ft
Casing		9.625	8.921	38	LTC	J-55	0	1787	0	1787
Casing		5.5	4.778	20		P-110	0	17794	0	7156
Open Hole Section			8.5				1787	17810	1787	7156
Tools and Accessories										
Type	Size in	Qty	Make	Depth ft		Type	Size in	Qty	Make	
Guide Shoe						Top Plug	5.5	1		
Float Shoe	5.5			17794		Bottom Plug	5.5	1		
Float Collar	5.5			17748		SSR plug set	5.5			
Insert Float						Plug Container	5.5	1	HES	
Stage Tool						Centralizers	5.5			
Fluid Data										
Stage/Plug #: 1										
Fluid #	Stage Type	Fluid Name	Qty	Qty UoM	Mixing Density lbm/gal	Yield ft3/sack	Mix Fluid Gal	Rate bbl/min	Total Mix Fluid Gal	
1	Tuned Spacer III	Tuned Spacer III	40	bbl	11.5	3.8		5		
Fluid #	Stage Type	Fluid Name	Qty	Qty UoM	Mixing Density lbm/gal	Yield ft3/sack	Mix Fluid Gal	Rate bbl/min	Total Mix Fluid Gal	
2	ElastiCem Lead	ELASTICEM (TM) SYSTEM	1021	sack	13.2	1.57		7	7.52	

last updated on 6/25/2017 5:11:43 PM

Page 1 of 2

iCem® Service

(v. 4.4.18)

Created: Sunday, June 25, 2017

HALLIBURTON

Cementing Job Summary

Fluid #	Stage Type	Fluid Name	Qty	Qty UoM	Mixing Density lbm/gal	Yield ft3/sack	Mix Fluid Gal	Rate bbl/min	Total Mix Fluid Gal
3	NeoCem Tail	NeoCem TM	1260	sack	13.17	2.093		4	10.08
Fluid #	Stage Type	Fluid Name	Qty	Qty UoM	Mixing Density lbm/gal	Yield ft3/sack	Mix Fluid Gal	Rate bbl/min	Total Mix Fluid Gal
4	MMCR Displacement	MMCR Displacement	40	bbl	8.34			8	
Fluid #	Stage Type	Fluid Name	Qty	Qty UoM	Mixing Density lbm/gal	Yield ft3/sack	Mix Fluid Gal	Rate bbl/min	Total Mix Fluid Gal
5	Cla Web Displacement	Cla Web Displacement	388	bbl	8.33			8	
Cement Left In Pipe		Amount	0 ft		Reason			Wet Shoe	
Comment Full returns throughout the job. Got 30 bbls. of cement back to surface. Pumped a 6 bbl. wet shoe.									

2.0 Real-Time Job Summary

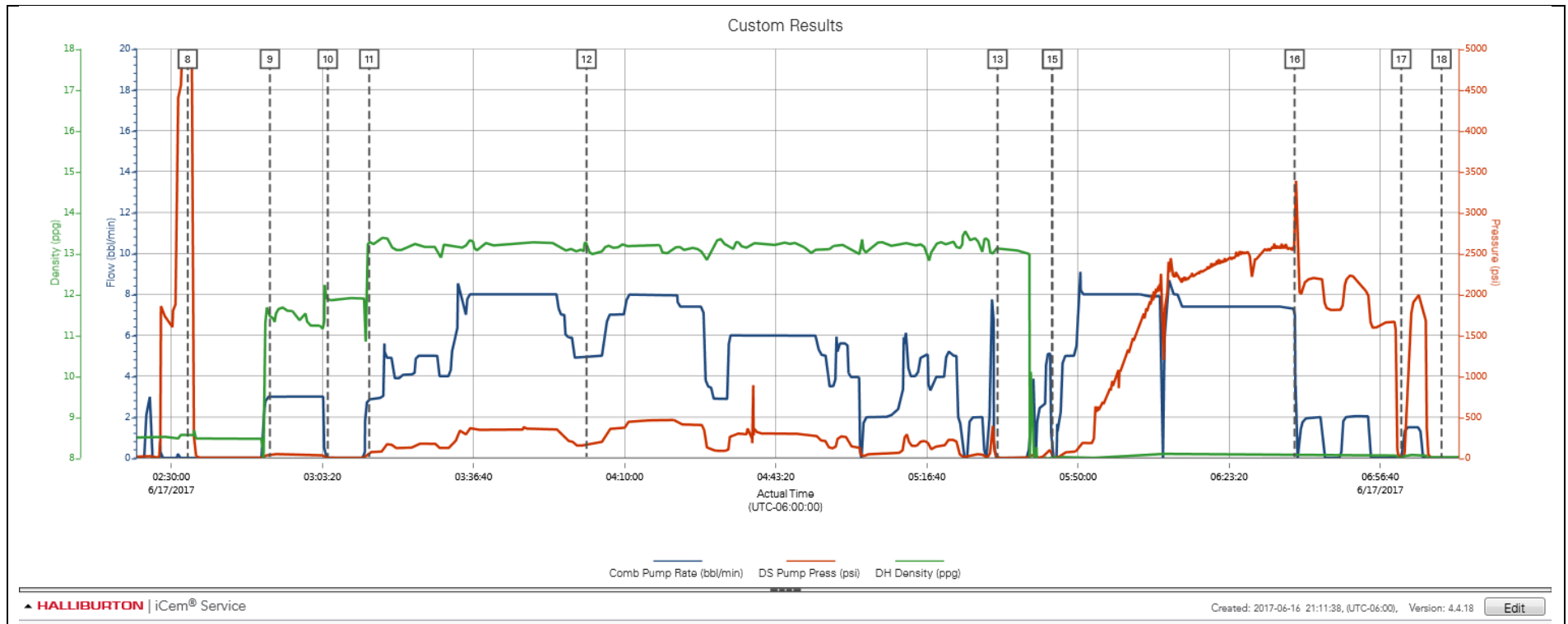
2.1 Job Event Log

Type	Seq. No.	Activity	Graph Label	Date	Time	Source	Comb Pump Rate (bbl/min)	DS Pump Press (psi)	DH Density (ppg)	Comments
Event	1	Call Out	Call Out	6/16/2017	16:00:00	USER				Crew called out at 16:00 for an location time of 20:00.
Event	2	Safety Meeting - Departing Location	Safety Meeting - Departing Location	6/16/2017	18:45:00	USER				Held pre journey safety meeting and JSA.
Event	3	Depart from Service Center or Other Site	Depart from Service Center or Other Site	6/16/2017	19:00:00	USER				Started journey management with dispatch and the crew left the yard.
Event	4	Arrive at Location from Service Center	Arrive at Location from Service Center	6/16/2017	20:00:00	USER				Checked in with the customer. Discussed numbers needed to calculate the job and rig up. Rig was running casing. 9.625" 36# Surface casing was set at 1,756 OH: 8.5" TD: 17,810'. 5.5" 20# production casing was set at 17,794'. FC: 17,748'. Mud # 9.6 ppg. Water test, Temp: 68 Degrees F. PH: 7.2 Chlorids: 0 ppm.
Event	5	Safety Meeting - Pre Rig-Up	Safety Meeting - Pre Rig-Up	6/16/2017	20:10:00	USER				Preformed a hazard hunt and site assessment. Held pre rig up safety meeting and JSA.
Event	6	Rig-Up Equipment	Rig-Up Equipment	6/16/2017	20:20:00	USER				Spotted trucks in and rigged up all iron and hoses for the job.
Event	7	Start Job	Start Job	6/17/2017	02:18:04	COM4	0.00	4.00	8.49	Pumped 3 bbls. of fresh water to fill lines.
Event	8	Test Lines	Test Lines	6/17/2017	02:33:36	COM4	0.00	4846.00	8.56	Pressure tested lines to 4,900 psi. with a 500 psi. electronic kick out test.
Event	9	Pump Spacer 1	Pump Spacer 1	6/17/2017	02:51:44	COM4	3.00	42.00	11.43	Pumped 40 bbls. of Tuned Spacer III with surfactants mixed at 11.5 ppg Density was verified by pressurized scales.
Event	10	Drop Bottom Plug	Drop Bottom Plug	6/17/2017	03:04:30	COM4	0.00	1.00	11.84	Dropped bottom plug. Witnessed by customer.
Event	11	Pump Lead Cement	Pump Lead Cement	6/17/2017	03:13:39	COM4	2.80	73.00	13.31	Pumped 285 bbls. (1021 sks.) of Elasticem mixed at 13.2 ppg. Density was verified by pressurized scales.
Event	12	Pump Tail Cement	Pump Tail Cement	6/17/2017	04:01:35	COM4	4.90	171.00	13.24	Pumped 469 bbls. (1260 sks.) of NeoCem mixed at 13.17 ppg. Density was verified by pressurized scales.

Event	13	Shutdown	Shutdown	6/17/2017	05:32:14	COM4	0.00	4.00	13.11	Washed pumps and lines until clean.
Event	14	Drop Top Plug	Drop Top Plug	6/17/2017	05:44:15	COM4	0.00	31.00	7.44	Dropped top plug. Witnessed by customer.
Event	15	Pump Displacement	Pump Displacement	6/17/2017	05:44:19	COM4	0.00	21.00	7.91	Pumped 3989 bbls. of fresh water for displacement. First 40 bbls. had MMCR in it and Clay Web and Bio Cide were added throughout the rest of displacement.
Event	16	Bump Plug	Bump Plug	6/17/2017	06:37:46	USER	7.30	2549.00	8.10	Ruptured the plug early. Discussed with company man to insure a wet shoe pumped the total volume of calculated displacement according to the measuring tubs. Total calculated displacement with a 6 bbl. wet shoe was 398 bbls.
Event	17	Other	Other	6/17/2017	07:01:18	USER	0.00	-2.00	8.04	Checked floats. Floats held. Pumped 6 bbl. wet shoe.
Event	18	End Job	End Job	6/17/2017	07:10:10	COM4				Checked floats. Floats held. Washed pumps and lines until clean.
Event	19	Pre-Rig Down Safety Meeting	Pre-Rig Down Safety Meeting	6/17/2017	07:50:00	USER	0.00	8.00	-0.04	Held pre rig down safety meeting and JSA.
Event	20	Rig-Down Equipment	Rig-Down Equipment	6/17/2017	08:00:00	USER				Rigged down all lines and hoses.
Event	21	Pre-Convoy Safety Meeting	Pre-Convoy Safety Meeting	6/17/2017	09:50:00	USER				Held pre journey safety meeting and JSA.
Event	22	Depart Location	Depart Location	6/17/2017	10:00:00	USER				Started journey management with dispatch and left location.

3.0 Attachments

3.1 Custom Results – Job Chart with Events



3.2 Custom Results – Job Chart with Events

