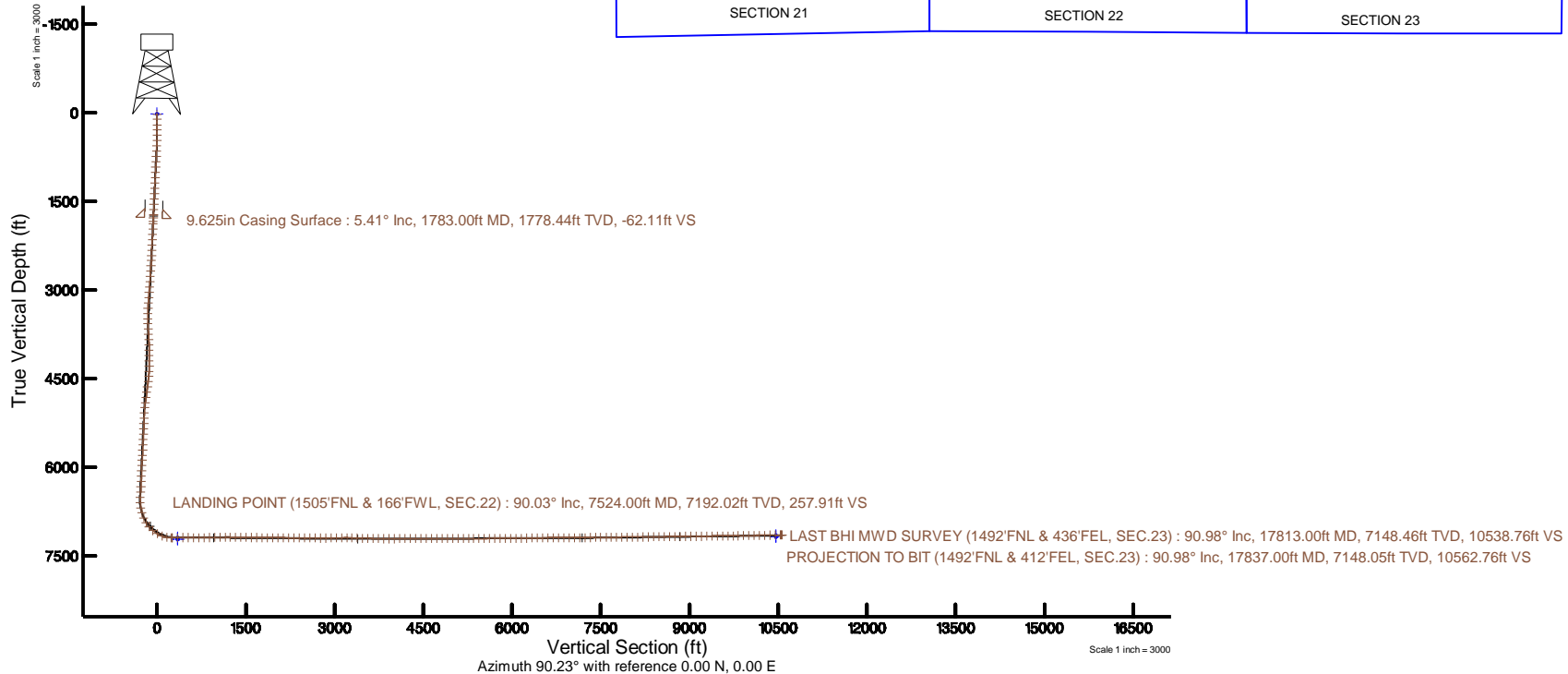
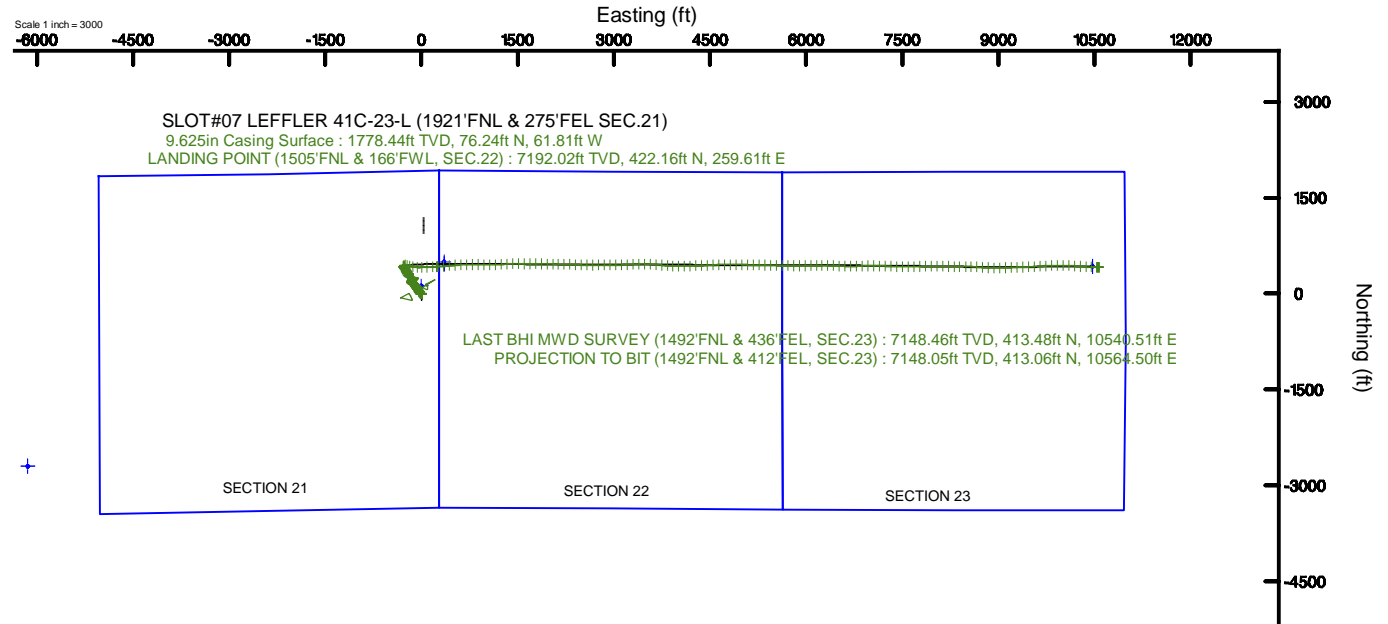


SRC ENERGY

Location: COLORADO Slot: SLOT#07 LEFFLER 41C-23-L (1921'FNL & 275'FEL SEC.21)
 Field: WELD COUNTY (NAD83,TRUE NORTH) Well: LEFFLER 41C-23-L
 Facility: SEC.21-T06N-R66W Wellbore: LEFFLER 41C-23-L PWB

Plot reference wellpath is LEFFLER 41C-23-L PWP REV-B-0	Grid System: NAD83 / Lambert Colorado SP, Northern Zone (501), US feet
True vertical depths are referenced to PRECISION 562 (25) (RKB)	* = Wellpath was transformed from a different geodetic datum
Measured depths are referenced to PRECISION 562 (25) (RKB)	North Reference: True north
PRECISION 562 (25) (RKB) to Mean Sea Level: 4773 feet	Scale: True distance
Mean Sea Level to Mud line (At Slot: SLOT#07 LEFFLER 41C-23-L (1921'FNL & 275'FEL SEC.21)): 0 feet	Depths are in feet
Coordinates are in feet referenced to Slot	Created by: doddanna on 2017-10-06
	Database: Denver DB



Actual Wellpath Report

LEFFLER 41C-23-L AWP

Page 1 of 8



REFERENCE WELLPATH IDENTIFICATION

Operator	SRC ENERGY	Slot	SLOT#07 LEFFLER 41C-23-L (1921'FNL & 275'FEL SEC.21)
Area	COLORADO	Well	LEFFLER 41C-23-L
Field	WELD COUNTY (NAD83,TRUE NORTH)	Wellbore	LEFFLER 41C-23-L AWB
Facility	SEC.21-T06N-R66W		

REPORT SETUP INFORMATION

Projection System	NAD83 / Lambert Colorado SP, Northern Zone (501), US feet	Software System	WellArchitect® 5.0
North Reference	True	User	Doddanna
Scale	0.999965	Report Generated	10/6/2017 at 12:51:49 PM
Convergence at slot	0.47° East	Database/Source file	Denver DB/LEFFLER_41C-23-L_AWP.xml

WELLPATH LOCATION

	Local coordinates		Grid coordinates		Geographic coordinates	
	North[ft]	East[ft]	Easting[US ft]	Northing[US ft]	Latitude	Longitude
Slot Location	-119.92	0.00	3201872.59	1417028.36	40°28'33.157"N	104°46'27.660"W
Facility Reference Pt			3201871.60	1417148.27	40°28'34.342"N	104°46'27.660"W
Field Reference Pt			3171284.48	1426358.81	40°30'07.643"N	104°53'02.634"W

WELLPATH DATUM

Calculation method	Minimum curvature	PRECISION 562 (25') (RKB) to Facility Vertical Datum	4773.00ft
Horizontal Reference Pt	Slot	PRECISION 562 (25') (RKB) to Mean Sea Level	4773.00ft
Vertical Reference Pt	PRECISION 562 (25') (RKB)	PRECISION 562 (25') (RKB) to Mud Line at Slot (SLOT#07 LEFFLER 41C-23-L (1921'FNL & 275'FEL SEC.21))	4773.00ft
MD Reference Pt	PRECISION 562 (25') (RKB)	Section Origin	N 0.00, E 0.00 ft
Field Vertical Reference	Mean Sea Level	Section Azimuth	90.23°

Actual Wellpath Report

LEFFLER 41C-23-L AWP

Page 2 of 8



REFERENCE WELLPATH IDENTIFICATION

Operator	SRC ENERGY	Slot	SLOT#07 LEFFLER 41C-23-L (1921'FNL & 275'FEL SEC.21)
Area	COLORADO	Well	LEFFLER 41C-23-L
Field	WELD COUNTY (NAD83,TRUE NORTH)	Wellbore	LEFFLER 41C-23-L AWB
Facility	SEC.21-T06N-R66W		

WELLPATH DATA (204 stations) † = interpolated/extrapolated station

MD [ft]	Inclination [°]	Azimuth [°]	TVD [ft]	Vert Sect [ft]	North [ft]	East [ft]	DLS [°/100ft]	Comments
0.00†	0.000	129.400	0.00	0.00	0.00	0.00	0.00	
25.00	0.000	129.400	25.00	0.00	0.00	0.00	0.00	
112.00	1.020	129.400	112.00	0.60	-0.49	0.60	1.17	
204.00	0.840	118.820	203.98	1.83	-1.34	1.82	0.27	
292.00	0.500	256.260	291.98	2.02	-1.74	2.01	1.43	
382.00	0.710	276.390	381.98	1.09	-1.77	1.08	0.33	
472.00	1.740	265.120	471.95	-0.83	-1.82	-0.84	1.17	
562.00	2.500	261.190	561.89	-4.13	-2.24	-4.14	0.86	
652.00	2.780	273.680	651.80	-8.25	-2.40	-8.26	0.71	
742.00	2.850	288.890	741.69	-12.54	-1.54	-12.55	0.83	
832.00	4.330	305.330	831.51	-17.44	1.15	-17.44	1.99	
922.00	5.020	319.920	921.22	-22.77	6.13	-22.75	1.52	
1012.00	5.260	327.620	1010.85	-27.54	12.63	-27.49	0.81	
1102.00	5.770	338.080	1100.44	-31.47	20.31	-31.39	1.25	
1192.00	5.590	336.910	1190.00	-34.91	28.54	-34.80	0.24	
1282.00	5.490	330.760	1279.58	-38.77	36.33	-38.62	0.67	
1372.00	5.420	327.380	1369.17	-43.19	43.66	-43.01	0.37	
1462.00	5.270	325.880	1458.78	-47.83	50.67	-47.62	0.23	
1552.00	5.030	332.290	1548.42	-52.01	57.58	-51.78	0.69	
1642.00	5.300	330.820	1638.05	-55.90	64.70	-55.64	0.33	
1732.00	5.260	332.300	1727.67	-59.87	71.98	-59.58	0.16	
1736.00	5.410	332.950	1731.65	-60.04	72.31	-59.75	4.04	
1840.00	5.420	330.500	1835.19	-64.73	80.96	-64.40	0.22	
1885.00	5.120	331.400	1880.00	-66.75	84.57	-66.41	0.69	
1974.00	4.950	331.140	1968.66	-70.53	91.42	-70.16	0.19	
2064.00	4.670	321.350	2058.34	-74.72	97.68	-74.33	0.96	
2153.00	5.000	314.640	2147.02	-79.76	103.23	-79.35	0.74	
2242.00	5.090	319.590	2235.68	-85.11	108.97	-84.67	0.50	
2332.00	5.220	331.330	2325.32	-89.68	115.60	-89.22	1.18	
2421.00	4.440	337.430	2414.00	-92.98	122.33	-92.49	1.05	
2511.00	4.370	318.290	2503.74	-96.62	128.11	-96.10	1.63	
2600.00	4.750	304.630	2592.46	-101.92	132.73	-101.39	1.29	
2690.00	4.920	311.210	2682.14	-107.91	137.39	-107.36	0.64	
2779.00	4.770	317.960	2770.82	-113.28	142.66	-112.71	0.66	
2869.00	4.520	307.050	2860.53	-118.64	147.57	-118.05	1.02	
2958.00	4.620	290.750	2949.25	-124.80	150.96	-124.20	1.46	
3048.00	5.050	285.350	3038.93	-132.02	153.29	-131.41	0.70	
3137.00	5.370	296.400	3127.57	-139.54	156.18	-138.92	1.18	
3227.00	6.050	313.880	3217.13	-146.75	161.34	-146.11	2.06	
3316.00	5.580	329.260	3305.67	-152.37	168.31	-151.70	1.82	
3406.00	6.330	347.180	3395.19	-155.75	176.91	-155.04	2.22	
3496.00	6.260	2.610	3484.66	-156.66	186.65	-155.92	1.88	
3585.00	7.340	19.980	3573.04	-154.54	196.84	-153.75	2.60	
3675.00	7.480	31.040	3662.29	-149.60	207.26	-148.77	1.59	
3764.00	6.100	38.170	3750.67	-143.72	215.94	-142.86	1.81	

Actual Wellpath Report

LEFFLER 41C-23-L AWP

Page 3 of 8



REFERENCE WELLPATH IDENTIFICATION

Operator	SRC ENERGY	Slot	SLOT#07 LEFFLER 41C-23-L (1921'FNL & 275'FEL SEC.21)
Area	COLORADO	Well	LEFFLER 41C-23-L
Field	WELD COUNTY (NAD83,TRUE NORTH)	Wellbore	LEFFLER 41C-23-L AWB
Facility	SEC.21-T06N-R66W		

WELLPATH DATA (204 stations)

MD [ft]	Inclination [°]	Azimuth [°]	TVD [ft]	Vert Sect [ft]	North [ft]	East [ft]	DLS [°/100ft]	Comments
3854.00	4.210	36.590	3840.30	-138.82	222.36	-137.93	2.11	
3944.00	4.500	21.380	3930.04	-135.59	228.30	-134.68	1.32	
4033.00	3.990	5.480	4018.80	-134.05	234.63	-133.11	1.44	
4123.00	2.380	3.060	4108.66	-133.67	239.61	-132.71	1.79	
4212.00	0.780	43.360	4197.62	-133.16	241.90	-132.19	2.08	
4300.00	0.730	210.540	4285.62	-133.04	241.85	-132.07	1.71	
4390.00	2.090	241.690	4375.59	-134.77	240.58	-133.80	1.68	
4479.00	6.990	293.680	4464.31	-141.17	241.99	-140.20	6.67	
4569.00	7.490	296.280	4553.60	-151.46	246.78	-150.47	0.66	
4658.00	8.220	299.960	4641.76	-162.20	252.53	-161.19	1.00	
4748.00	9.420	301.460	4730.69	-174.08	259.59	-173.04	1.36	
4837.00	10.320	305.260	4818.38	-186.84	267.99	-185.77	1.25	
4926.00	10.210	312.530	4905.96	-199.20	277.93	-198.09	1.46	
5016.00	8.940	327.550	4994.71	-208.88	289.22	-207.72	3.10	
5105.00	8.080	338.260	5082.74	-214.95	300.87	-213.75	2.02	
5195.00	7.130	346.180	5171.95	-218.68	312.17	-217.43	1.57	
5286.00	4.880	328.710	5262.45	-222.07	320.96	-220.79	3.16	
5375.00	5.150	325.120	5351.11	-226.35	327.47	-225.04	0.47	
5465.00	6.390	330.220	5440.65	-231.18	335.13	-229.83	1.49	
5554.00	6.050	334.030	5529.13	-235.72	343.65	-234.35	0.60	
5644.00	6.490	344.300	5618.59	-239.21	352.81	-237.80	1.34	
5733.00	6.550	337.690	5707.02	-242.54	362.35	-241.09	0.85	
5823.00	6.520	327.800	5796.44	-247.25	371.42	-245.76	1.25	
5912.00	5.120	317.090	5884.98	-252.67	378.61	-251.16	1.98	
6001.00	4.690	322.850	5973.65	-257.60	384.41	-256.06	0.73	
6091.00	4.940	332.220	6063.34	-261.65	390.78	-260.09	0.92	
6182.00	5.010	336.090	6154.00	-265.12	397.87	-263.52	0.38	
6271.00	4.740	331.010	6242.67	-268.50	404.64	-266.88	0.57	
6361.00	4.340	321.380	6332.39	-272.45	410.56	-270.81	0.95	
6450.00	4.560	309.880	6421.13	-277.29	415.46	-275.63	1.03	
6539.00	4.600	300.130	6509.84	-283.11	419.52	-281.43	0.87	
6629.00	8.290	20.060	6599.40	-284.04	427.44	-282.32	9.71	
6718.00	12.520	48.010	6686.97	-274.71	439.93	-272.94	7.27	
6808.00	15.630	89.930	6774.48	-255.31	446.49	-253.52	11.55	
6897.00	22.820	104.370	6858.51	-226.53	442.21	-224.75	9.63	
6986.00	32.210	105.730	6937.35	-186.85	431.48	-185.11	10.57	
7076.00	42.600	102.950	7008.75	-133.87	418.11	-132.19	11.69	
7166.00	50.760	92.000	7070.54	-69.11	410.04	-67.46	12.65	
7255.00	57.370	86.560	7122.77	2.85	411.09	4.50	8.92	
7345.00	68.180	88.080	7163.89	82.66	414.77	84.33	12.10	
7435.00	81.510	87.990	7187.36	169.27	417.75	170.95	14.81	
7500.00	90.180	86.720	7192.07	233.96	420.74	235.65	13.48	
7524.00	90.030	86.520	7192.02	257.91	422.16	259.61	1.04	LANDING POINT (1505'FNL & 166'FWL, SEC.22)
7613.00	90.250	85.550	7191.81	346.67	428.31	348.39	1.12	
7703.00	90.250	84.650	7191.41	436.31	436.00	438.06	1.00	

Actual Wellpath Report

LEFFLER 41C-23-L AWP

Page 4 of 8



REFERENCE WELLPATH IDENTIFICATION

Operator	SRC ENERGY	Slot	SLOT#07 LEFFLER 41C-23-L (1921'FNL & 275'FEL SEC.21)
Area	COLORADO	Well	LEFFLER 41C-23-L
Field	WELD COUNTY (NAD83,TRUE NORTH)	Wellbore	LEFFLER 41C-23-L AWB
Facility	SEC.21-T06N-R66W		

WELLPATH DATA (204 stations)

MD [ft]	Inclination [°]	Azimuth [°]	TVD [ft]	Vert Sect [ft]	North [ft]	East [ft]	DLS [°/100ft]	Comments
7793.00	89.510	84.340	7191.60	525.86	444.63	527.64	0.89	
7882.00	89.570	87.020	7192.32	614.56	451.33	616.38	3.01	
7972.00	90.060	89.620	7192.61	704.51	453.97	706.33	2.94	
8061.00	90.310	89.600	7192.32	793.50	454.58	795.33	0.28	
8151.00	91.290	90.460	7191.06	883.49	454.53	885.32	1.45	
8240.00	91.260	90.610	7189.08	972.46	453.70	974.29	0.17	
8329.00	91.260	90.200	7187.13	1061.44	453.07	1063.27	0.46	
8419.00	90.220	88.680	7185.96	1151.42	453.95	1153.25	2.05	
8508.00	89.720	86.880	7186.01	1240.34	457.40	1242.18	2.10	
8598.00	89.170	85.300	7186.88	1330.10	463.53	1331.97	1.86	
8687.00	89.050	88.570	7188.27	1418.93	468.29	1420.82	3.68	
8777.00	89.320	92.390	7189.55	1508.90	467.54	1510.79	4.25	
8866.00	89.380	90.410	7190.56	1597.87	465.36	1599.75	2.23	
8955.00	89.350	89.460	7191.54	1686.86	465.47	1688.74	1.07	
9045.00	89.380	89.770	7192.54	1776.85	466.07	1778.74	0.35	
9135.00	89.450	90.680	7193.46	1866.85	465.72	1868.73	1.01	
9224.00	89.540	91.720	7194.24	1955.83	463.85	1957.71	1.17	
9314.00	89.570	91.740	7194.94	2045.79	461.14	2047.66	0.04	
9403.00	89.540	89.890	7195.63	2134.78	459.87	2136.65	2.08	
9493.00	89.630	89.970	7196.29	2224.78	459.98	2226.64	0.13	
9582.00	89.320	92.390	7197.10	2313.76	458.15	2315.62	2.74	
9671.00	89.510	93.480	7198.01	2402.65	453.59	2404.49	1.24	
9761.00	89.690	92.400	7198.64	2492.55	448.97	2494.37	1.22	
9850.00	89.630	91.040	7199.17	2581.51	446.30	2583.33	1.53	
9939.00	89.970	90.110	7199.48	2670.51	445.41	2672.32	1.11	
10029.00	88.830	88.100	7200.42	2760.48	446.82	2762.30	2.57	
10119.00	90.460	89.670	7200.98	2850.45	448.57	2852.27	2.51	
10208.00	90.950	90.430	7199.88	2939.44	448.49	2941.27	1.02	
10298.00	91.080	90.010	7198.29	3029.43	448.14	3031.25	0.49	
10387.00	91.140	88.080	7196.56	3118.39	449.63	3120.22	2.17	
10477.00	89.850	86.020	7195.79	3208.24	454.26	3210.09	2.70	
10566.00	88.520	87.100	7197.05	3297.04	459.60	3298.92	1.92	
10655.00	88.310	88.660	7199.51	3385.93	462.89	3387.82	1.77	
10745.00	88.120	91.410	7202.32	3475.88	462.83	3477.77	3.06	
10834.00	89.080	93.530	7204.49	3564.78	459.00	3566.65	2.61	
10924.00	87.970	94.870	7206.81	3654.53	452.41	3656.38	1.93	
11013.00	87.970	95.450	7209.96	3743.14	444.41	3744.96	0.65	
11103.00	90.310	94.080	7211.31	3832.84	436.94	3834.63	3.01	
11192.00	90.340	91.370	7210.81	3921.75	432.71	3923.52	3.05	
11282.00	90.220	89.740	7210.37	4011.74	431.83	4013.51	1.82	
11371.00	90.090	89.210	7210.13	4100.74	432.65	4102.51	0.61	
11461.00	90.120	88.750	7209.96	4190.71	434.25	4192.49	0.51	
11550.00	90.060	88.650	7209.82	4279.68	436.27	4281.47	0.13	
11640.00	90.090	87.960	7209.70	4369.63	438.93	4371.43	0.77	
11730.00	90.120	87.150	7209.54	4459.53	442.77	4461.35	0.90	

Actual Wellpath Report

LEFFLER 41C-23-L AWP

Page 5 of 8



REFERENCE WELLPATH IDENTIFICATION

Operator	SRC ENERGY	Slot	SLOT#07 LEFFLER 41C-23-L (1921'FNL & 275'FEL SEC.21)
Area	COLORADO	Well	LEFFLER 41C-23-L
Field	WELD COUNTY (NAD83,TRUE NORTH)	Wellbore	LEFFLER 41C-23-L AWB
Facility	SEC.21-T06N-R66W		

WELLPATH DATA (204 stations)

MD [ft]	Inclination [°]	Azimuth [°]	TVD [ft]	Vert Sect [ft]	North [ft]	East [ft]	DLS [°/100ft]	Comments
11819.00	90.090	86.890	7209.38	4548.39	447.40	4550.23	0.29	
11909.00	90.150	87.710	7209.19	4638.27	451.64	4640.12	0.91	
11998.00	90.090	89.130	7209.00	4727.23	454.09	4729.09	1.60	
12087.00	90.090	90.670	7208.86	4816.22	454.25	4818.08	1.73	
12177.00	90.120	90.920	7208.70	4906.22	453.00	4908.08	0.28	
12266.00	90.180	91.090	7208.46	4995.21	451.44	4997.06	0.20	
12356.00	90.030	90.890	7208.30	5085.20	449.88	5087.05	0.28	
12445.00	90.120	91.010	7208.18	5174.19	448.41	5176.04	0.17	
12535.00	90.150	91.090	7207.97	5264.18	446.76	5266.02	0.09	
12624.00	90.460	91.320	7207.50	5353.17	444.89	5355.00	0.43	
12714.00	90.280	91.500	7206.91	5443.15	442.67	5444.97	0.28	
12803.00	90.430	91.630	7206.36	5532.12	440.24	5533.94	0.22	
12893.00	90.430	91.560	7205.69	5622.10	437.74	5623.90	0.08	
12982.00	90.400	90.930	7205.04	5711.08	435.80	5712.87	0.71	
13072.00	90.400	90.600	7204.42	5801.07	434.60	5802.86	0.37	
13161.00	90.340	89.770	7203.84	5890.07	434.31	5891.86	0.93	
13251.00	90.340	89.210	7203.31	5980.06	435.12	5981.86	0.62	
13340.00	90.400	88.750	7202.73	6069.04	436.70	6070.84	0.52	
13430.00	90.740	88.740	7201.84	6159.00	438.67	6160.81	0.38	
13519.00	90.740	89.540	7200.69	6247.98	440.01	6249.79	0.90	
13609.00	90.830	90.620	7199.45	6337.97	439.88	6339.78	1.20	
13698.00	90.830	91.900	7198.16	6426.94	437.92	6428.75	1.44	
13788.00	90.650	93.040	7197.00	6516.86	434.05	6518.66	1.28	
13877.00	90.770	92.440	7195.90	6605.77	429.79	6607.55	0.69	
13967.00	90.310	89.930	7195.05	6695.75	427.93	6697.52	2.84	
14056.00	90.220	88.390	7194.64	6784.73	429.24	6786.51	1.73	
14146.00	90.280	88.080	7194.25	6874.67	432.01	6876.46	0.35	
14235.00	90.370	88.980	7193.74	6963.63	434.29	6965.43	1.02	
14325.00	90.340	89.790	7193.18	7053.62	435.26	7055.42	0.90	
14414.00	90.400	91.950	7192.61	7142.61	433.90	7144.41	2.43	
14504.00	90.800	92.990	7191.67	7232.53	430.03	7234.32	1.24	
14593.00	90.710	92.170	7190.49	7321.45	426.02	7323.22	0.93	
14683.00	90.680	91.370	7189.40	7411.41	423.24	7413.17	0.89	
14772.00	90.740	90.570	7188.30	7500.39	421.73	7502.15	0.90	
14862.00	90.550	89.900	7187.29	7590.39	421.37	7592.14	0.77	
14951.00	89.880	87.900	7186.95	7679.36	423.07	7681.12	2.37	
15041.00	90.430	89.040	7186.71	7769.31	425.48	7771.08	1.41	
15130.00	90.580	89.250	7185.92	7858.29	426.80	7860.07	0.29	
15220.00	90.710	89.610	7184.91	7948.28	427.70	7950.06	0.43	
15309.00	90.520	90.050	7183.96	8037.27	427.96	8039.05	0.54	
15399.00	90.830	91.090	7182.90	8127.26	427.07	8129.04	1.21	
15488.00	90.800	91.330	7181.63	8216.24	425.19	8218.01	0.27	
15578.00	90.740	90.280	7180.42	8306.23	423.93	8307.99	1.17	
15667.00	90.830	90.130	7179.20	8395.22	423.61	8396.99	0.20	
15757.00	90.800	90.110	7177.92	8485.21	423.42	8486.98	0.04	

Actual Wellpath Report

LEFFLER 41C-23-L AWP

Page 6 of 8



REFERENCE WELLPATH IDENTIFICATION

Operator	SRC ENERGY	Slot	SLOT#07 LEFFLER 41C-23-L (1921'FNL & 275'FEL SEC.21)
Area	COLORADO	Well	LEFFLER 41C-23-L
Field	WELD COUNTY (NAD83,TRUE NORTH)	Wellbore	LEFFLER 41C-23-L AWB
Facility	SEC.21-T06N-R66W		

WELLPATH DATA (204 stations)

MD [ft]	Inclination [°]	Azimuth [°]	TVD [ft]	Vert Sect [ft]	North [ft]	East [ft]	DLS [°/100ft]	Comments
15846.00	90.980	92.230	7176.54	8574.18	421.60	8575.94	2.39	
15936.00	90.950	94.620	7175.02	8664.02	416.23	8665.76	2.66	
16026.00	91.080	93.440	7173.43	8753.81	409.90	8755.52	1.32	
16115.00	90.990	92.710	7171.82	8842.68	405.13	8844.38	0.83	
16205.00	89.880	90.690	7171.14	8932.64	402.46	8934.33	2.56	
16294.00	89.940	89.100	7171.28	9021.64	402.62	9023.33	1.79	
16384.00	89.880	87.310	7171.42	9111.58	405.44	9113.28	1.99	
16473.00	91.510	87.110	7170.34	9200.45	409.77	9202.17	1.85	
16563.00	91.290	88.430	7168.14	9290.34	413.27	9292.07	1.49	
16652.00	91.420	89.200	7166.03	9379.28	415.11	9381.02	0.88	
16742.00	90.490	88.190	7164.53	9469.24	417.16	9470.99	1.53	
16832.00	90.620	86.760	7163.66	9559.13	421.13	9560.89	1.60	
16921.00	90.550	86.150	7162.75	9647.93	426.63	9649.72	0.69	
17011.00	90.580	86.100	7161.87	9737.69	432.71	9739.51	0.06	
17100.00	90.520	87.800	7161.01	9826.54	437.45	9828.37	1.91	
17190.00	90.680	89.440	7160.07	9916.49	439.61	9918.34	1.83	
17279.00	91.230	90.920	7158.59	10005.48	439.34	10007.32	1.77	
17368.00	91.350	92.390	7156.58	10094.43	436.77	10096.26	1.66	
17458.00	91.230	94.200	7154.56	10184.27	431.59	10186.09	2.02	
17548.00	91.050	94.230	7152.77	10274.04	424.98	10275.83	0.20	
17637.00	90.890	92.840	7151.26	10362.87	419.49	10364.64	1.57	
17726.00	90.890	91.980	7149.88	10451.80	415.75	10453.55	0.97	
17813.00	90.980	91.010	7148.46	10538.76	413.48	10540.51	1.12	LAST BHI MWD SURVEY (1492'FNL & 436'FEL, SEC.23)
17837.00	90.980	91.010	7148.05	10562.76	413.06	10564.50	0.00	PROJECTION TO BIT (1492'FNL & 412'FEL, SEC.23)

HOLE & CASING SECTIONS - Ref Wellbore: LEFFLER 41C-23-L AWB Ref Wellpath: LEFFLER 41C-23-L AWP

String/Diameter	Start MD [ft]	End MD [ft]	Interval [ft]	Start TVD [ft]	End TVD [ft]	Start N/S [ft]	Start E/W [ft]	End N/S [ft]	End E/W [ft]
13.5in Open Hole	25.00	1783.00	1758.00	25.00	1778.44	0.00	0.00	76.24	-61.81
9.625in Casing Surface	25.00	1783.00	1758.00	25.00	1778.44	0.00	0.00	76.24	-61.81
8.5in Open Hole	1783.00	17837.00	16054.00	1778.44	7148.05	76.24	-61.81	413.06	10564.50

Actual Wellpath Report

LEFFLER 41C-23-L AWP

Page 7 of 8



REFERENCE WELLPATH IDENTIFICATION

Operator	SRC ENERGY	Slot	SLOT#07 LEFFLER 41C-23-L (1921'FNL & 275'FEL SEC.21)
Area	COLORADO	Well	LEFFLER 41C-23-L
Field	WELD COUNTY (NAD83,TRUE NORTH)	Wellbore	LEFFLER 41C-23-L AWB
Facility	SEC.21-T06N-R66W		

TARGETS

Name	TVD [ft]	North [ft]	East [ft]	Grid East [US ft]	Grid North [US ft]	Latitude	Longitude	Shape
SEC.23-T06N-R66W	21.00	119.92	0.00	3201871.60	1417148.27	40°28'34.342"N	104°46'27.660"W	polygon
SEC.21-T06N-R66W	35.00	-2699.13	-6141.60	3195753.51	1414279.17	40°28'06.478"N	104°47'47.123"W	polygon
SEC.22-T06N-R66W	35.00	-2699.13	-6141.60	3195753.51	1414279.17	40°28'06.478"N	104°47'47.123"W	polygon
LEFFLER 41C-23-L BHL REV-2 (1479'FNL & 510'FEL SEC.23)	7158.19	426.31	10466.88	3212335.23	1417540.28	40°28'37.348"N	104°44'12.217"W	point
LEFFLER 41C-23-L BHL REV-1 (1479'FNL & 510'FEL SEC.23)	7176.00	426.31	10466.88	3212335.23	1417540.28	40°28'37.348"N	104°44'12.217"W	point
LEFFLER 41C-23-L TOP OF PROD ON PLAT REV-2 (1462'FNL & 75'FWL SEC.22)	7196.00	464.89	350.26	3202219.01	1417496.08	40°28'37.751"N	104°46'23.128"W	point
LEFFLER 41C-23-L TOP OF PROD ON PLAT (1462'FNL & 75'FWL SEC.22)	7217.00	464.89	350.26	3202219.01	1417496.08	40°28'37.751"N	104°46'23.128"W	point
LEFFLER 41C-23-L TOP OF PROD REV-1 (1429'FNL & 75'FWL SEC.22)	7217.00	497.89	350.26	3202218.74	1417529.08	40°28'38.077"N	104°46'23.128"W	point

WELLPATH COMPOSITION - Ref Wellbore: LEFFLER 41C-23-L AWB Ref Wellpath: LEFFLER 41C-23-L AWP

Start MD [ft]	End MD [ft]	Positional Uncertainty Model	Log Name/Comment	Wellbore
25.00	1736.00	Custom BHI NaviTrak (Standard Rotating+Axial Corr) (Rockies 0.03Gt model)	BHI NAVITRAK W/EM 13.5" (STD ROTATING, AXIAL, ROCKIES GT)<112-1736>	LEFFLER 41C-23-L AWB
1736.00	17813.00	Custom BHI AutoTrak Curve (IFR1, Short) (Rockies 0.03Gt model)	BHI ATC 8.5" (IFR, SHORT, ROCKIES GT)<1840-17813>	LEFFLER 41C-23-L AWB
17813.00	17837.00	Blind Drilling (std)	Projection to bit	LEFFLER 41C-23-L AWB

Actual Wellpath Report

LEFFLER 41C-23-L AWP

Page 8 of 8



REFERENCE WELLPATH IDENTIFICATION			
Operator	SRC ENERGY	Slot	SLOT#07 LEFFLER 41C-23-L (1921'FNL & 275'FEL SEC.21)
Area	COLORADO	Well	LEFFLER 41C-23-L
Field	WELD COUNTY (NAD83,TRUE NORTH)	Wellbore	LEFFLER 41C-23-L AWB
Facility	SEC.21-T06N-R66W		

WELLPATH COMMENTS				
MD [ft]	Inclination [°]	Azimuth [°]	TVD [ft]	Comment
7524.00	90.030	86.520	7192.02	LANDING POINT (1505'FNL & 166'FWL, SEC.22)
17813.00	90.980	91.010	7148.46	LAST BHI MWD SURVEY (1492'FNL & 436'FEL, SEC.23)
17837.00	90.980	91.010	7148.05	PROJECTION TO BIT (1492'FNL & 412'FEL, SEC.23)