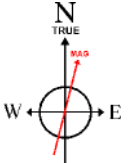


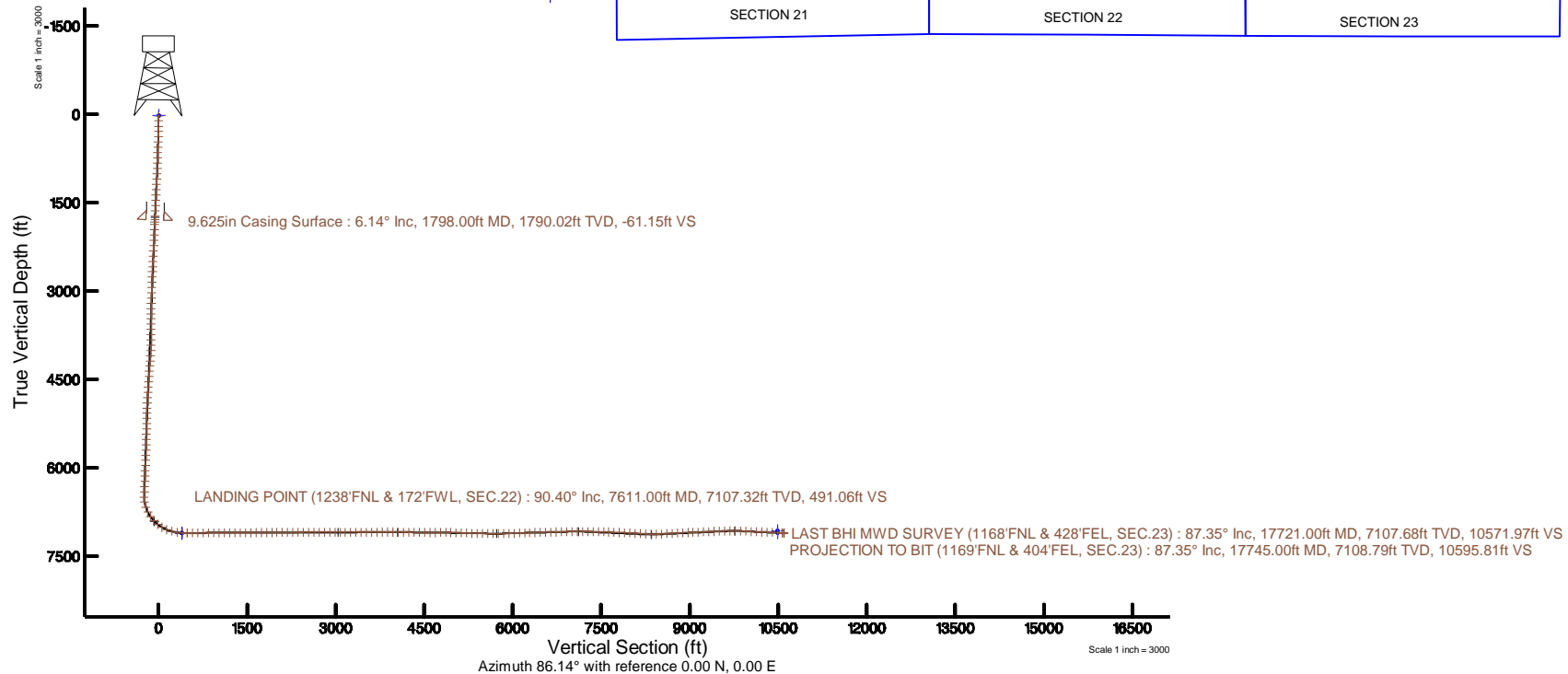
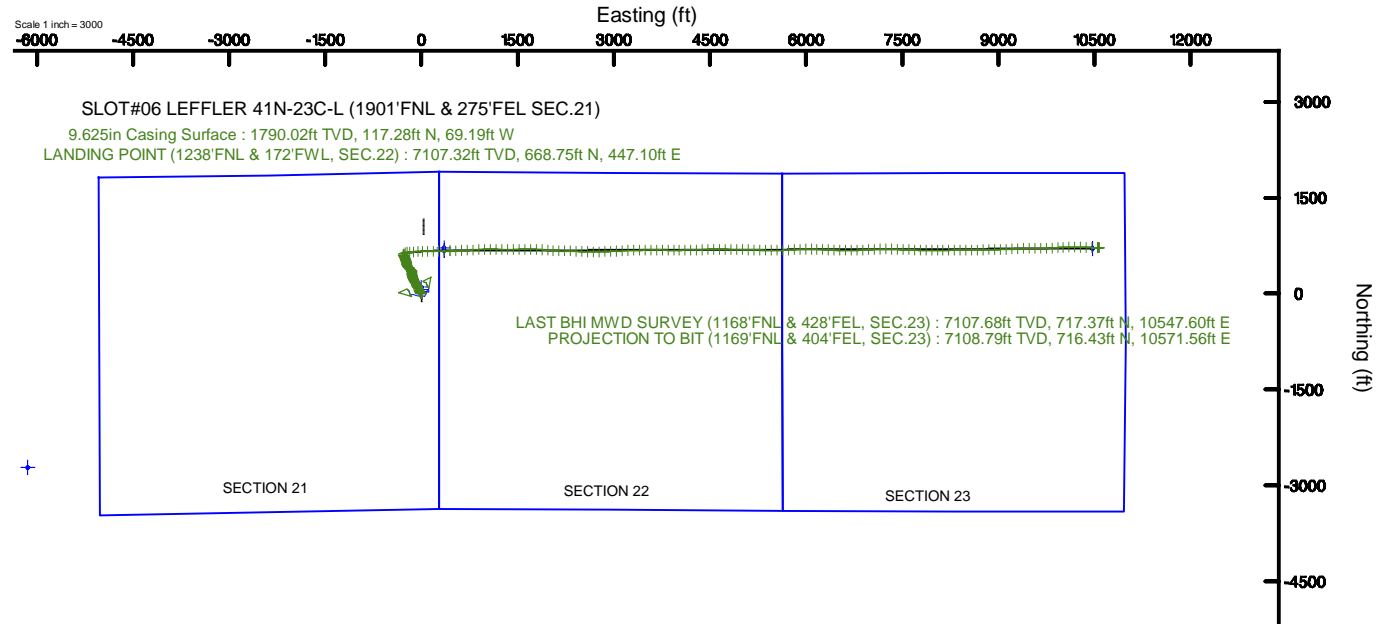
SRC ENERGY

Location: COLORADO Slot: SLOT#06 LEFFLER 41N-23C-L (1901'FNL & 275'FEL SEC.21)
Field: WELD COUNTY (NAD83,TRUE NORTH) Well: LEFFLER 41N-23C-L
Facility: SEC.21-T06N-R66W Wellbore: LEFFLER 41N-23C-L PWB

Plot reference wellpath is LEFFLER 41N-23C-L PWP REV-6.0	Grid System: NAD83 / Lambert Colorado SP, Northern Zone (501), US feet
True vertical depths are referenced to PRECISION 562 (25) (RKB)	" = Wellpath was transformed from a different geodetic datum
Measured depths are referenced to PRECISION 562 (25) (RKB)	North Reference: True north
PRECISION 562 (25) (RKB) to Mean Sea Level: 4773 feet	Scale: True distance
Mean Sea Level to Mud line (At Slot: SLOT#06 LEFFLER 41N-23C-L (1901'FNL & 275'FEL SEC.21)): 0 feet	Depths are in feet
Coordinates are in feet referenced to Slot	Created by: doddanna on 2017-10-06
	Database: Denver DB




BGGM (1900.0 to 2019.0) Dip: 66.90° Field: 52436.6 nT
Magnetic North is 8.38 degrees East of True North (at 8/15/2017)
To correct azimuth from Magnetic to True add 8.38 degrees



Actual Wellpath Report

LEFFLER 41N-23C-L AWP

Page 1 of 8



REFERENCE WELLPATH IDENTIFICATION

Operator	SRC ENERGY	Slot	SLOT#06 LEFFLER 41N-23C-L (1901'FNL & 275'FEL SEC.21)
Area	COLORADO	Well	LEFFLER 41N-23C-L
Field	WELD COUNTY (NAD83, TRUE NORTH)	Wellbore	LEFFLER 41N-23C-L AWB
Facility	SEC.21-T06N-R66W		

REPORT SETUP INFORMATION

Projection System	NAD83 / Lambert Colorado SP, Northern Zone (501), US feet	Software System	WellArchitect® 5.0
North Reference	True	User	Doddanna
Scale	0.999965	Report Generated	10/6/2017 at 1:28:28 PM
Convergence at slot	0.47° East	Database/Source file	Denver DB/LEFFLER_41N-23C-L_AWP.xml

WELLPATH LOCATION

	Local coordinates		Grid coordinates		Geographic coordinates	
	North[ft]	East[ft]	Easting[US ft]	Northing[US ft]	Latitude	Longitude
Slot Location	-99.88	0.00	3201872.42	1417048.39	40°28'33.355"N	104°46'27.660"W
Facility Reference Pt			3201871.60	1417148.27	40°28'34.342"N	104°46'27.660"W
Field Reference Pt			3171284.48	1426358.81	40°30'07.643"N	104°53'02.634"W

WELLPATH DATUM

Calculation method	Minimum curvature	PRECISION 562 (25') (RKB) to Facility Vertical Datum	4773.00ft
Horizontal Reference Pt	Slot	PRECISION 562 (25') (RKB) to Mean Sea Level	4773.00ft
Vertical Reference Pt	PRECISION 562 (25') (RKB)	PRECISION 562 (25') (RKB) to Mud Line at Slot (SLOT#06 LEFFLER 41N-23C-L (1901'FNL & 275'FEL SEC.21))	4773.00ft
MD Reference Pt	PRECISION 562 (25') (RKB)	Section Origin	N 0.00, E 0.00 ft
Field Vertical Reference	Mean Sea Level	Section Azimuth	86.14°

Actual Wellpath Report

LEFFLER 41N-23C-L AWP

Page 2 of 8



REFERENCE WELLPATH IDENTIFICATION

Operator	SRC ENERGY	Slot	SLOT#06 LEFFLER 41N-23C-L (1901'FNL & 275'FEL SEC.21)
Area	COLORADO	Well	LEFFLER 41N-23C-L
Field	WELD COUNTY (NAD83,TRUE NORTH)	Wellbore	LEFFLER 41N-23C-L AWB
Facility	SEC.21-T06N-R66W		

WELLPATH DATA (201 stations) † = interpolated/extrapolated station

MD [ft]	Inclination [°]	Azimuth [°]	TVD [ft]	Vert Sect [ft]	North [ft]	East [ft]	DLS [°/100ft]	Comments
0.00†	0.000	91.130	0.00	0.00	0.00	0.00	0.00	
25.00	0.000	91.130	25.00	0.00	0.00	0.00	0.00	
112.00	0.890	91.130	112.00	0.67	-0.01	0.68	1.02	
204.00	0.440	112.110	203.99	1.70	-0.16	1.72	0.55	
292.00	1.090	277.720	291.99	1.19	-0.18	1.20	1.73	
382.00	2.620	276.660	381.94	-1.67	0.18	-1.69	1.70	
472.00	2.970	269.400	471.83	-6.03	0.39	-6.07	0.55	
562.00	2.760	274.380	561.72	-10.50	0.53	-10.56	0.36	
652.00	2.180	307.020	651.64	-13.94	1.73	-14.08	1.66	
742.00	3.420	342.580	741.53	-15.86	5.32	-16.26	2.31	
832.00	4.390	334.240	831.33	-17.78	10.99	-18.56	1.25	
922.00	6.170	333.890	920.94	-20.89	18.43	-22.18	1.98	
1012.00	7.030	333.000	1010.34	-24.89	27.68	-26.81	0.96	
1102.00	7.180	331.410	1099.65	-29.41	37.53	-32.00	0.27	
1192.00	7.550	332.340	1188.91	-34.15	47.70	-37.44	0.43	
1282.00	7.940	335.950	1278.09	-38.68	58.62	-42.72	0.69	
1372.00	7.950	337.150	1367.22	-42.85	70.03	-47.67	0.18	
1462.00	8.000	334.460	1456.35	-47.19	81.42	-52.78	0.42	
1552.00	7.030	337.690	1545.58	-51.25	92.16	-57.58	1.18	
1642.00	6.510	332.950	1634.95	-55.00	101.80	-61.99	0.85	
1741.00	6.200	334.870	1733.34	-59.15	111.64	-66.81	0.38	
1838.00	6.120	342.600	1829.79	-62.26	121.32	-70.58	0.86	
1882.00	6.330	341.100	1873.53	-63.44	125.85	-72.07	0.60	
1972.00	6.760	335.010	1962.94	-66.64	135.34	-75.91	0.91	
2061.00	6.480	329.910	2051.35	-70.75	144.44	-80.64	0.73	
2151.00	6.410	328.400	2140.78	-75.33	153.11	-85.82	0.20	
2240.00	6.600	327.030	2229.21	-80.13	161.63	-91.21	0.28	
2329.00	6.490	329.180	2317.63	-84.90	170.24	-96.57	0.30	
2419.00	6.770	331.050	2407.03	-89.46	179.25	-101.74	0.39	
2508.00	6.680	331.630	2495.41	-93.83	188.40	-106.74	0.13	
2598.00	6.520	331.680	2584.82	-98.12	197.50	-111.65	0.18	
2687.00	6.630	330.280	2673.23	-102.45	206.41	-116.60	0.22	
2777.00	6.570	333.460	2762.63	-106.70	215.53	-121.47	0.41	
2866.00	6.720	335.180	2851.04	-110.53	224.81	-125.93	0.28	
2956.00	6.620	337.610	2940.43	-114.06	234.39	-130.12	0.33	
3045.00	6.520	339.260	3028.84	-117.16	243.86	-133.86	0.24	
3135.00	6.560	342.590	3118.26	-119.85	253.54	-137.21	0.42	
3224.00	6.600	347.010	3206.67	-121.85	263.38	-139.88	0.57	
3314.00	6.520	347.330	3296.08	-123.46	273.40	-142.17	0.10	
3404.00	6.690	348.950	3385.49	-124.90	283.53	-144.29	0.28	
3493.00	6.550	348.300	3473.89	-126.24	293.59	-146.31	0.18	
3583.00	6.680	355.550	3563.30	-126.99	303.84	-147.76	0.94	
3672.00	6.640	3.040	3651.70	-126.43	314.14	-147.89	0.98	
3762.00	6.690	0.040	3741.09	-125.45	324.57	-147.61	0.39	
3852.00	6.640	351.050	3830.48	-125.56	334.96	-148.42	1.16	

Actual Wellpath Report

LEFFLER 41N-23C-L AWP

Page 3 of 8



REFERENCE WELLPATH IDENTIFICATION

Operator	SRC ENERGY	Slot	SLOT#06 LEFFLER 41N-23C-L (1901'FNL & 275'FEL SEC.21)
Area	COLORADO	Well	LEFFLER 41N-23C-L
Field	WELD COUNTY (NAD83,TRUE NORTH)	Wellbore	LEFFLER 41N-23C-L AWB
Facility	SEC.21-T06N-R66W		

WELLPATH DATA (201 stations)

MD [ft]	Inclination [°]	Azimuth [°]	TVD [ft]	Vert Sect [ft]	North [ft]	East [ft]	DLS [°/100ft]	Comments
3941.00	6.700	341.970	3918.88	-127.28	344.98	-150.82	1.19	
4031.00	6.520	331.900	4008.29	-130.67	354.48	-154.86	1.30	
4120.00	6.590	327.090	4096.71	-135.22	363.22	-160.01	0.62	
4210.00	6.540	314.110	4186.12	-141.16	371.13	-166.50	1.65	
4299.00	6.770	312.070	4274.52	-148.21	378.17	-174.03	0.37	
4389.00	6.650	316.160	4363.91	-155.24	385.48	-181.58	0.55	
4478.00	6.650	322.380	4452.31	-161.42	393.28	-188.29	0.81	
4568.00	6.580	324.260	4541.71	-167.04	401.59	-194.49	0.25	
4657.00	6.850	314.870	4630.10	-173.23	409.48	-201.23	1.27	
4747.00	6.540	308.420	4719.49	-180.57	416.45	-209.05	0.90	
4836.00	6.700	318.150	4807.90	-187.51	423.47	-216.48	1.27	
4926.00	6.640	332.530	4897.29	-192.83	431.99	-222.38	1.85	
5015.00	6.420	343.320	4985.72	-196.00	441.33	-226.19	1.40	
5104.00	6.940	351.450	5074.12	-197.54	451.41	-228.41	1.21	
5194.00	6.870	351.850	5163.47	-198.39	462.12	-229.99	0.09	
5284.00	6.720	350.630	5252.83	-199.30	472.64	-231.61	0.23	
5373.00	6.920	344.680	5341.20	-200.86	482.95	-233.87	0.82	
5463.00	6.890	337.870	5430.55	-203.63	493.18	-237.34	0.91	
5552.00	6.690	338.470	5518.93	-206.88	502.95	-241.25	0.24	
5642.00	6.860	346.530	5608.30	-209.37	513.05	-244.43	1.07	
5731.00	6.850	344.780	5696.67	-211.30	523.34	-247.06	0.23	
5821.00	6.880	341.960	5786.02	-213.68	533.64	-250.14	0.38	
5910.00	6.950	337.330	5874.37	-216.73	543.68	-253.86	0.63	
5999.00	7.050	338.310	5962.71	-220.13	553.73	-257.96	0.18	
6089.00	6.350	335.370	6052.10	-223.59	563.38	-262.07	0.87	
6180.00	6.350	334.890	6142.54	-227.20	572.51	-266.30	0.06	
6269.00	6.530	330.980	6230.98	-231.14	581.40	-270.85	0.53	
6359.00	6.540	324.290	6320.39	-236.02	590.03	-276.32	0.85	
6448.00	6.660	322.710	6408.80	-241.54	598.25	-282.41	0.24	
6537.00	7.490	8.030	6497.19	-243.19	608.11	-284.73	6.17	
6627.00	14.200	39.600	6585.60	-234.37	622.45	-276.85	9.70	
6716.00	18.370	63.830	6671.11	-213.85	637.07	-257.28	8.86	
6806.00	26.080	85.760	6754.50	-180.85	644.81	-224.72	12.45	
6895.00	34.620	87.960	6831.24	-135.93	647.16	-179.86	9.67	
6984.00	43.530	83.340	6900.27	-79.92	651.63	-124.03	10.53	
7074.00	52.280	85.720	6960.55	-13.24	657.89	-57.61	9.92	
7163.00	59.670	89.820	7010.33	60.41	660.65	16.02	9.14	
7253.00	67.070	89.640	7050.65	140.65	661.03	96.42	8.22	
7343.00	75.500	88.840	7079.50	225.69	662.17	181.58	9.40	
7432.00	80.950	87.800	7097.65	312.72	664.73	268.63	6.23	
7522.00	88.150	89.190	7106.20	402.18	667.08	358.13	8.15	
7611.00	90.400	88.660	7107.32	491.06	668.75	447.10	2.60	LANDING POINT (1238'FNL & 172'FWL, SEC.22)
7701.00	90.340	87.820	7106.74	581.00	671.51	537.06	0.94	
7791.00	90.180	87.470	7106.33	670.97	675.21	626.98	0.43	
7880.00	90.280	87.910	7105.98	759.94	678.80	715.91	0.51	

Actual Wellpath Report

LEFFLER 41N-23C-L AWP

Page 4 of 8



REFERENCE WELLPATH IDENTIFICATION

Operator	SRC ENERGY	Slot	SLOT#06 LEFFLER 41N-23C-L (1901'FNL & 275'FEL SEC.21)
Area	COLORADO	Well	LEFFLER 41N-23C-L
Field	WELD COUNTY (NAD83,TRUE NORTH)	Wellbore	LEFFLER 41N-23C-L AWP
Facility	SEC.21-T06N-R66W		

WELLPATH DATA (201 stations)

MD [ft]	Inclination [°]	Azimuth [°]	TVD [ft]	Vert Sect [ft]	North [ft]	East [ft]	DLS [°/100ft]	Comments
7969.00	90.150	87.290	7105.64	848.91	682.52	804.83	0.71	
8059.00	90.060	86.730	7105.48	938.89	687.22	894.71	0.63	
8148.00	90.310	88.160	7105.19	1027.87	691.19	983.61	1.63	
8238.00	90.400	90.330	7104.63	1117.73	692.37	1073.60	2.41	
8327.00	90.430	91.440	7103.99	1206.42	691.00	1162.59	1.25	
8417.00	90.400	91.920	7103.33	1296.00	688.36	1252.54	0.53	
8506.00	90.280	91.260	7102.81	1384.60	685.89	1341.51	0.75	
8596.00	90.280	88.090	7102.37	1474.41	686.40	1431.49	3.52	
8685.00	90.280	87.070	7101.93	1563.38	690.16	1520.41	1.15	
8775.00	90.180	89.160	7101.57	1653.32	693.12	1610.36	2.32	
8864.00	90.120	90.820	7101.34	1742.12	693.13	1699.35	1.87	
8953.00	90.280	92.770	7101.03	1830.68	690.35	1788.31	2.20	
9043.00	90.650	94.050	7100.30	1919.95	684.99	1878.14	1.48	
9133.00	90.400	93.840	7099.47	2009.12	678.80	1967.92	0.36	
9222.00	90.620	93.720	7098.68	2097.32	672.93	2056.73	0.28	
9311.00	90.680	90.350	7097.67	2185.84	669.77	2145.65	3.79	
9401.00	90.580	90.520	7096.68	2275.58	669.09	2235.64	0.22	
9491.00	90.400	92.640	7095.91	2365.17	666.61	2325.60	2.36	
9580.00	90.680	93.110	7095.07	2453.55	662.15	2414.49	0.61	
9669.00	90.620	91.990	7094.06	2541.98	658.19	2503.39	1.26	
9759.00	90.370	91.920	7093.28	2631.52	655.12	2593.33	0.29	
9848.00	90.430	90.410	7092.66	2720.17	653.31	2682.31	1.70	
9937.00	90.310	88.530	7092.09	2809.02	654.13	2771.30	2.12	
10027.00	89.850	87.460	7091.96	2898.97	657.28	2861.24	1.29	
10116.00	90.180	87.650	7091.94	2987.94	661.08	2950.16	0.43	
10206.00	89.850	87.080	7091.92	3077.92	665.21	3040.07	0.73	
10295.00	90.180	86.670	7091.89	3166.91	670.07	3128.93	0.59	
10385.00	89.940	87.170	7091.80	3256.90	674.90	3218.80	0.62	
10475.00	90.060	88.690	7091.80	3346.86	678.15	3308.74	1.69	
10564.00	90.000	89.380	7091.75	3435.74	679.65	3397.73	0.78	
10653.00	89.970	89.660	7091.77	3524.59	680.40	3486.73	0.32	
10743.00	90.030	89.700	7091.77	3614.42	680.90	3576.73	0.08	
10832.00	90.150	89.800	7091.63	3703.24	681.29	3665.72	0.18	
10922.00	90.180	90.770	7091.38	3793.00	680.84	3755.72	1.08	
11011.00	89.910	90.370	7091.31	3881.74	679.95	3844.72	0.54	
11101.00	90.150	89.980	7091.26	3971.52	679.68	3934.72	0.51	
11190.00	89.170	89.940	7091.79	4060.32	679.74	4023.71	1.10	
11280.00	89.170	88.250	7093.09	4150.18	681.16	4113.69	1.88	
11369.00	89.010	90.790	7094.50	4239.01	681.91	4202.67	2.86	
11459.00	88.740	88.700	7096.27	4328.81	682.31	4292.64	2.34	
11548.00	89.140	86.930	7097.92	4417.75	685.70	4381.56	2.04	
11638.00	88.980	87.050	7099.39	4507.73	690.43	4471.42	0.22	
11727.00	89.110	89.220	7100.88	4596.66	693.32	4560.36	2.44	
11817.00	90.340	90.890	7101.31	4686.45	693.24	4650.35	2.30	
11906.00	91.480	91.570	7099.90	4775.08	691.33	4739.32	1.49	

Actual Wellpath Report

LEFFLER 41N-23C-L AWP

Page 5 of 8



REFERENCE WELLPATH IDENTIFICATION

Operator	SRC ENERGY	Slot	SLOT#06 LEFFLER 41N-23C-L (1901'FNL & 275'FEL SEC.21)
Area	COLORADO	Well	LEFFLER 41N-23C-L
Field	WELD COUNTY (NAD83,TRUE NORTH)	Wellbore	LEFFLER 41N-23C-L AWB
Facility	SEC.21-T06N-R66W		

WELLPATH DATA (201 stations)

MD [ft]	Inclination [°]	Azimuth [°]	TVD [ft]	Vert Sect [ft]	North [ft]	East [ft]	DLS [°/100ft]	Comments
11996.00	89.690	90.610	7098.98	4864.74	689.61	4829.29	2.26	
12085.00	87.970	90.740	7100.80	4953.44	688.57	4918.27	1.94	
12175.00	88.310	91.310	7103.72	5043.06	686.96	5008.20	0.74	
12264.00	88.090	91.340	7106.51	5131.66	684.90	5097.14	0.25	
12354.00	88.460	91.580	7109.22	5221.23	682.61	5187.07	0.49	
12443.00	88.430	91.270	7111.64	5309.82	680.40	5276.01	0.35	
12533.00	89.050	91.250	7113.62	5399.44	678.42	5365.96	0.69	
12622.00	89.050	90.060	7115.09	5488.15	677.40	5454.94	1.34	
12712.00	89.170	89.520	7116.49	5577.95	677.73	5544.93	0.61	
12801.00	88.860	88.320	7118.02	5666.83	679.41	5633.90	1.39	
12891.00	90.460	87.080	7118.55	5756.80	683.02	5723.82	2.25	
12980.00	91.720	86.090	7116.86	5845.77	688.32	5812.64	1.80	
13069.00	91.480	87.800	7114.37	5934.73	693.06	5901.48	1.94	
13159.00	91.420	89.170	7112.10	6024.62	695.44	5991.42	1.52	
13249.00	91.690	90.810	7109.65	6114.38	695.45	6081.38	1.85	
13338.00	91.720	91.950	7107.01	6202.97	693.31	6170.31	1.28	
13427.00	91.790	92.920	7104.28	6291.39	689.53	6259.19	1.09	
13517.00	91.660	92.730	7101.57	6380.74	685.10	6349.04	0.26	
13606.00	91.970	92.240	7098.75	6469.15	681.24	6437.91	0.65	
13696.00	91.850	91.100	7095.75	6558.68	678.62	6527.82	1.27	
13785.00	91.820	90.360	7092.90	6647.35	677.49	6616.77	0.83	
13875.00	91.540	89.400	7090.26	6737.12	677.68	6706.73	1.11	
13965.00	91.420	88.680	7087.94	6826.97	679.18	6796.69	0.81	
14054.00	91.420	87.940	7085.73	6915.88	681.81	6885.62	0.83	
14144.00	91.750	86.800	7083.24	7005.83	685.93	6975.49	1.32	
14233.00	89.050	86.990	7082.62	7094.81	690.75	7064.35	3.04	
14323.00	89.110	87.950	7084.07	7184.77	694.73	7154.25	1.07	
14412.00	89.540	90.550	7085.12	7273.63	695.89	7243.22	2.96	
14502.00	89.260	91.330	7086.06	7363.30	694.42	7333.21	0.92	
14591.00	89.260	92.070	7087.21	7451.88	691.78	7422.16	0.83	
14681.00	89.290	91.140	7088.35	7541.46	689.25	7512.12	1.03	
14770.00	87.010	92.580	7091.22	7629.97	686.37	7601.01	3.03	
14860.00	86.950	92.330	7095.96	7719.30	682.52	7690.81	0.29	
14949.00	87.290	92.010	7100.43	7807.69	679.15	7779.63	0.52	
15039.00	87.260	90.570	7104.71	7897.23	677.13	7869.50	1.60	
15128.00	86.770	89.940	7109.35	7985.88	676.73	7958.38	0.90	
15218.00	87.010	89.850	7114.23	8075.55	676.90	8048.25	0.28	
15307.00	87.040	89.310	7118.85	8164.27	677.55	8137.13	0.61	
15397.00	86.950	87.990	7123.57	8254.06	679.67	8226.98	1.47	
15486.00	88.950	89.180	7126.75	8342.91	681.86	8315.89	2.61	
15576.00	91.690	89.590	7126.25	8432.76	682.83	8405.87	3.08	
15665.00	92.800	90.010	7122.76	8521.51	683.14	8494.80	1.33	
15755.00	92.890	89.740	7118.30	8611.21	683.34	8584.69	0.32	
15844.00	92.710	88.960	7113.95	8699.96	684.34	8673.58	0.90	
15934.00	92.890	89.550	7109.55	8789.72	685.51	8763.46	0.68	

Actual Wellpath Report

LEFFLER 41N-23C-L AWP

Page 6 of 8



REFERENCE WELLPATH IDENTIFICATION

Operator	SRC ENERGY	Slot	SLOT#06 LEFFLER 41N-23C-L (1901'FNL & 275'FEL SEC.21)
Area	COLORADO	Well	LEFFLER 41N-23C-L
Field	WELD COUNTY (NAD83,TRUE NORTH)	Wellbore	LEFFLER 41N-23C-L AWB
Facility	SEC.21-T06N-R66W		

WELLPATH DATA (201 stations)

MD [ft]	Inclination [°]	Azimuth [°]	TVD [ft]	Vert Sect [ft]	North [ft]	East [ft]	DLS [°/100ft]	Comments
16023.00	92.770	89.690	7105.16	8878.45	686.10	8852.35	0.21	
16113.00	92.650	88.240	7100.90	8968.24	687.73	8942.23	1.61	
16202.00	92.530	88.440	7096.88	9057.08	690.30	9031.10	0.26	
16292.00	92.740	87.140	7092.74	9146.95	693.77	9120.94	1.46	
16382.00	92.460	86.500	7088.66	9236.85	698.76	9210.71	0.78	
16471.00	92.460	87.460	7084.84	9325.76	703.44	9299.50	1.08	
16561.00	92.650	88.730	7080.83	9415.61	706.43	9389.36	1.43	
16650.00	92.560	89.260	7076.78	9504.41	707.99	9478.25	0.60	
16740.00	92.560	90.220	7072.76	9594.14	708.40	9568.16	1.07	
16830.00	90.550	90.710	7070.32	9683.85	707.67	9658.12	2.30	
16919.00	88.430	87.650	7071.11	9772.70	708.94	9747.09	4.18	
17009.00	87.200	86.300	7074.54	9862.62	713.68	9836.90	2.03	
17098.00	87.200	86.250	7078.89	9951.52	719.46	9925.60	0.06	
17187.00	87.380	87.450	7083.10	10040.41	724.35	10014.37	1.36	
17277.00	87.290	88.810	7087.28	10130.26	727.28	10104.22	1.51	
17366.00	87.440	91.100	7091.38	10218.96	727.35	10193.12	2.58	
17456.00	87.260	91.910	7095.54	10308.47	724.99	10282.99	0.92	
17546.00	87.410	91.560	7099.72	10397.94	722.27	10372.85	0.42	
17635.00	87.410	91.310	7103.74	10486.47	720.04	10461.74	0.28	
17721.00	87.350	92.250	7107.68	10571.97	717.37	10547.60	1.09	LAST BHI MWD SURVEY (1168'FNL & 428'FEL, SEC.23)
17745.00	87.350	92.250	7108.79	10595.81	716.43	10571.56	0.00	PROJECTION TO BIT (1169'FNL & 404'FEL, SEC.23)

HOLE & CASING SECTIONS - Ref Wellbore: LEFFLER 41N-23C-L AWB Ref Wellpath: LEFFLER 41N-23C-L AWP

String/Diameter	Start MD [ft]	End MD [ft]	Interval [ft]	Start TVD [ft]	End TVD [ft]	Start N/S [ft]	Start E/W [ft]	End N/S [ft]	End E/W [ft]
13.5in Open Hole	25.00	1798.00	1773.00	25.00	1790.02	0.00	0.00	117.28	-69.19
9.625in Casing Surface	25.00	1798.00	1773.00	25.00	1790.02	0.00	0.00	117.28	-69.19
8.5in Open Hole	1798.00	17745.00	15947.00	1790.02	7108.79	117.28	-69.19	716.43	10571.56

Actual Wellpath Report

LEFFLER 41N-23C-L AWP

Page 7 of 8



REFERENCE WELLPATH IDENTIFICATION

Operator	SRC ENERGY	Slot	SLOT#06 LEFFLER 41N-23C-L (1901'FNL & 275'FEL SEC.21)
Area	COLORADO	Well	LEFFLER 41N-23C-L
Field	WELD COUNTY (NAD83,TRUE NORTH)	Wellbore	LEFFLER 41N-23C-L AWB
Facility	SEC.21-T06N-R66W		

TARGETS

Name	TVD [ft]	North [ft]	East [ft]	Grid East [US ft]	Grid North [US ft]	Latitude	Longitude	Shape
SEC.23-T06N-R66W	21.00	99.88	0.00	3201871.60	1417148.27	40°28'34.342"N	104°46'27.660"W	polygon
SEC.21-T06N-R66W	35.00	-2719.16	-6141.60	3195753.51	1414279.17	40°28'06.478"N	104°47'47.123"W	polygon
SEC.22-T06N-R66W	35.00	-2719.16	-6141.60	3195753.51	1414279.17	40°28'06.478"N	104°47'47.123"W	polygon
LEFFLER 41N-23C-L BHL REV-1 (1180'FNL & 510'FEL SEC.23)	7067.00	705.37	10465.36	3212331.27	1417839.35	40°28'40.303"N	104°44'12.235"W	point
LEFFLER 41N-23C-L BHL REV-2 (1180'FNL & 510'FEL SEC.23)	7104.82	705.37	10465.36	3212331.27	1417839.35	40°28'40.303"N	104°44'12.235"W	point
LEFFLER 41N-23C-L TOP OF PROD REV-2 (1234'FNL & 75'FWL SEC.22)	7107.45	672.92	350.26	3202217.14	1417724.13	40°28'40.004"N	104°46'23.128"W	point
LEFFLER 41N-23C-L TOP OF PROD ON PLAT (1234'FNL & 75'FWL SEC.22)	7109.00	672.92	350.26	3202217.15	1417724.13	40°28'40.004"N	104°46'23.128"W	point
LEFFLER 41N-23C-L TOP OF PROD REV-1 (1189'FNL & 75'FWL SEC.22)	7109.00	717.92	350.26	3202216.78	1417769.12	40°28'40.449"N	104°46'23.128"W	point

WELLPATH COMPOSITION - Ref Wellbore: LEFFLER 41N-23C-L AWB Ref Wellpath: LEFFLER 41N-23C-L AWP

Start MD [ft]	End MD [ft]	Positional Uncertainty Model	Log Name/Comment	Wellbore
25.00	1741.00	Custom BHI NaviTrak (Standard Rotating+Axial Corr) (Rockies 0.03Gt model)	BHI NAVITRAK W/EM 13.5" (STD ROTATING, AXIAL, ROCKIES GT)<112-1741>	LEFFLER 41N-23C-L AWB
1741.00	17721.00	Custom BHI AutoTrak Curve (IFR1, Short) (Rockies 0.03Gt model)	Custom BHI AutoTrak Curve (IFR1, Short) (Rockies 0.03Gt model) <1838'-17721'>	LEFFLER 41N-23C-L AWB
17721.00	17745.00	Blind Drilling (std)	Projection to bit	LEFFLER 41N-23C-L AWB

Actual Wellpath Report

LEFFLER 41N-23C-L AWP

Page 8 of 8



REFERENCE WELLPATH IDENTIFICATION			
Operator	SRC ENERGY	Slot	SLOT#06 LEFFLER 41N-23C-L (1901'FNL & 275'FEL SEC.21)
Area	COLORADO	Well	LEFFLER 41N-23C-L
Field	WELD COUNTY (NAD83,TRUE NORTH)	Wellbore	LEFFLER 41N-23C-L AWB
Facility	SEC.21-T06N-R66W		

WELLPATH COMMENTS				
MD [ft]	Inclination [°]	Azimuth [°]	TVD [ft]	Comment
7611.00	90.400	88.660	7107.32	LANDING POINT (1238'FNL & 172'FWL, SEC.22)
17721.00	87.350	92.250	7107.68	LAST BHI MWD SURVEY (1168'FNL & 428'FEL, SEC.23)
17745.00	87.350	92.250	7108.79	PROJECTION TO BIT (1169'FNL & 404'FEL, SEC.23)