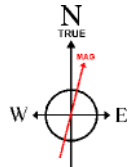


SRC ENERGY

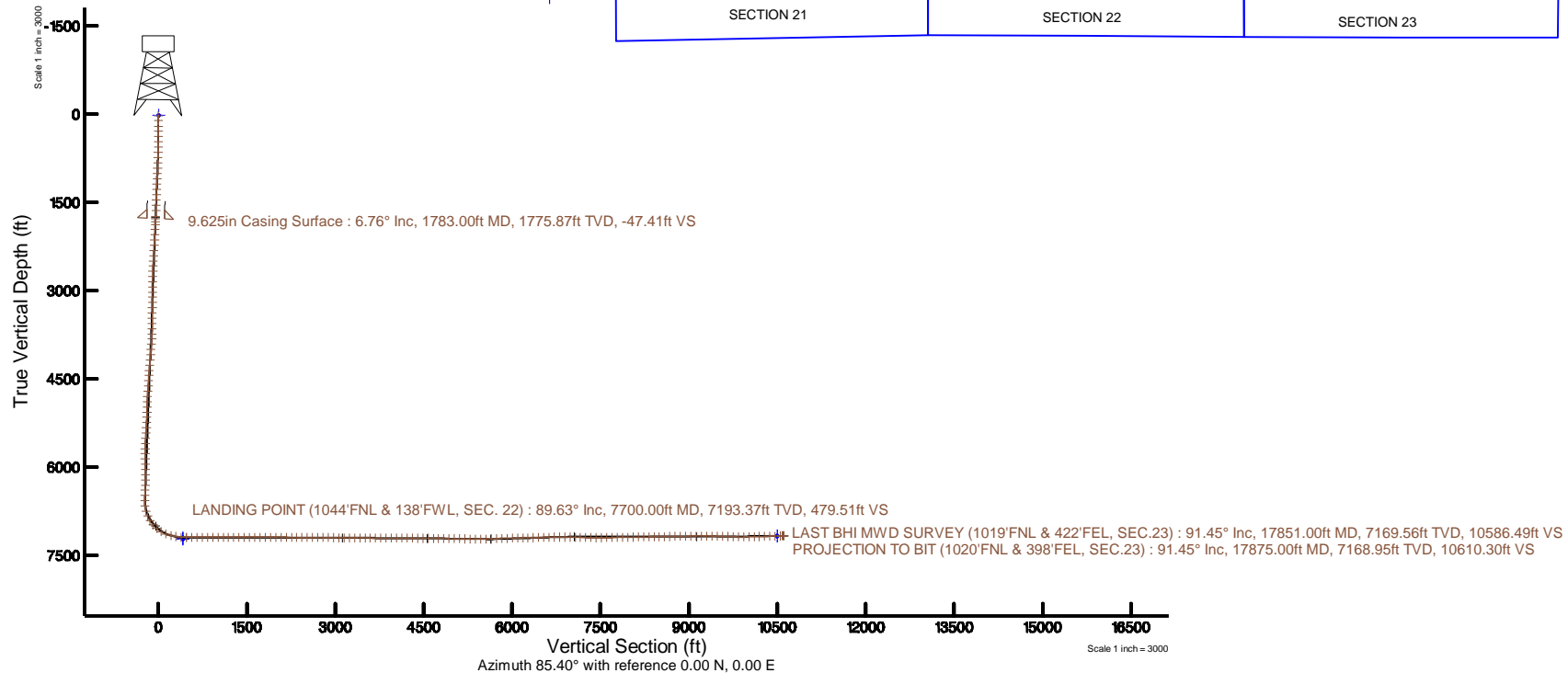
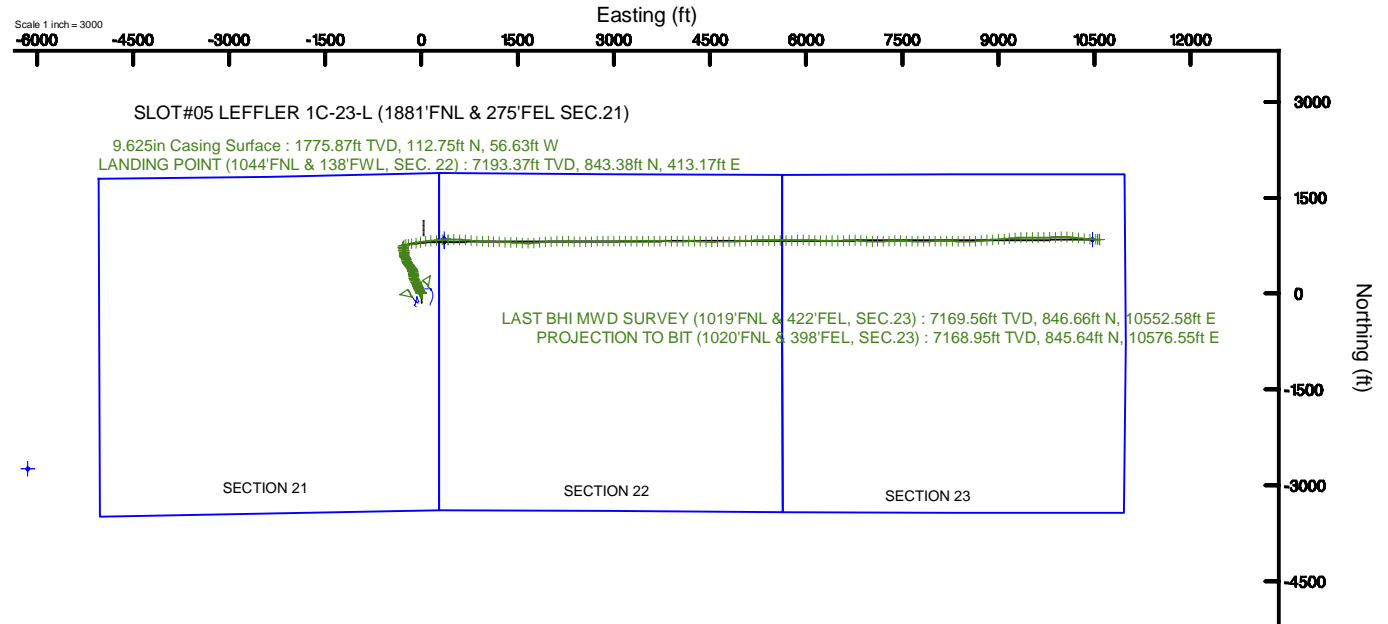
Location: COLORADO Slot: SLOT#05 LEFFLER 1C-23-L (1881'FNL & 275'FEL SEC.21)
Field: WELD COUNTY (NAD83,TRUE NORTH) Well: LEFFLER 1C-23-L
Facility: SEC.21-T06N-R66W Wellbore: LEFFLER 1C-23-L PWB

Plot reference wellpath is LEFFLER 1C-23-L PWP REV-8.0	Grid System: NAD83 / Lambert Colorado SP, Northern Zone (501), US feet
True vertical depths are referenced to PRECISION 562 (25) (RKB)	* = Wellpath was transformed from a different geodetic datum
Measured depths are referenced to PRECISION 562 (25) (RKB)	North Reference: True north
PRECISION 562 (25) (RKB) to Mean Sea Level: 4773 feet	Scale: True distance
Mean Sea Level to Mud line (At Slot: SLOT#05 LEFFLER 1C-23-L (1881'FNL & 275'FEL SEC.21)): 0 feet	Depths are in feet
Coordinates are in feet referenced to Slot	Created by: doddanna on 2017-10-06
	Database: Denver DB



BGGM (1900.0 to 2019.0) Dip: 66.90° Field: 52436.6 nT
Magnetic North is 8.38 degrees East of True North (at 8/15/2017)

To correct azimuth from Magnetic to True add 8.38 degrees



Actual Wellpath Report

LEFFLER 1C-23-L AWP

Page 1 of 8



REFERENCE WELLPATH IDENTIFICATION

Operator	SRC ENERGY	Slot	SLOT#05 LEFFLER 1C-23-L (1881'FNL & 275'FEL SEC.21)
Area	COLORADO	Well	LEFFLER 1C-23-L
Field	WELD COUNTY (NAD83,TRUE NORTH)	Wellbore	LEFFLER 1C-23-L AWB
Facility	SEC.21-T06N-R66W		

REPORT SETUP INFORMATION

Projection System	NAD83 / Lambert Colorado SP, Northern Zone (501), US feet	Software System	WellArchitect® 5.0
North Reference	True	User	Doddanna
Scale	0.999965	Report Generated	10/6/2017 at 2:57:02 PM
Convergence at slot	0.47° East	Database/Source file	Denver DB/LEFFLER_1C-23-L_AWP.xml

WELLPATH LOCATION

	Local coordinates		Grid coordinates		Geographic coordinates	
	North[ft]	East[ft]	Easting[US ft]	Northing[US ft]	Latitude	Longitude
Slot Location	-79.85	0.00	3201872.26	1417068.43	40°28'33.553"N	104°46'27.660"W
Facility Reference Pt			3201871.60	1417148.27	40°28'34.342"N	104°46'27.660"W
Field Reference Pt			3171284.48	1426358.81	40°30'07.643"N	104°53'02.634"W

WELLPATH DATUM

Calculation method	Minimum curvature	PRECISION 562 (25') (RKB) to Facility Vertical Datum	4773.00ft
Horizontal Reference Pt	Slot	PRECISION 562 (25') (RKB) to Mean Sea Level	4773.00ft
Vertical Reference Pt	PRECISION 562 (25') (RKB)	PRECISION 562 (25') (RKB) to Mud Line at Slot (SLOT#05 LEFFLER 1C-23-L (1881'FNL & 275'FEL SEC.21))	4773.00ft
MD Reference Pt	PRECISION 562 (25') (RKB)	Section Origin	N 0.00, E 0.00 ft
Field Vertical Reference	Mean Sea Level	Section Azimuth	85.40°

Actual Wellpath Report

LEFFLER 1C-23-L AWP

Page 2 of 8



REFERENCE WELLPATH IDENTIFICATION

Operator	SRC ENERGY	Slot	SLOT#05 LEFFLER 1C-23-L (1881'FNL & 275'FEL SEC.21)
Area	COLORADO	Well	LEFFLER 1C-23-L
Field	WELD COUNTY (NAD83,TRUE NORTH)	Wellbore	LEFFLER 1C-23-L AWB
Facility	SEC.21-T06N-R66W		

WELLPATH DATA (203 stations) † = interpolated/extrapolated station

MD [ft]	Inclination [°]	Azimuth [°]	TVD [ft]	Vert Sect [ft]	North [ft]	East [ft]	DLS [°/100ft]	Comments
0.00†	0.000	22.060	0.00	0.00	0.00	0.00	0.00	
25.00	0.000	22.060	25.00	0.00	0.00	0.00	0.00	
112.00	1.440	22.060	111.99	0.49	1.01	0.41	1.66	
204.00	0.620	37.320	203.98	1.34	2.48	1.15	0.93	
292.00	0.770	8.590	291.97	1.79	3.44	1.52	0.43	
382.00	0.060	277.240	381.97	1.89	4.05	1.57	0.86	
472.00	0.730	296.610	471.96	1.35	4.31	1.01	0.75	
562.00	1.440	300.310	561.95	-0.07	5.14	-0.48	0.79	
652.00	2.670	306.680	651.89	-2.57	6.96	-3.14	1.39	
742.00	2.940	301.980	741.78	-6.00	9.44	-6.78	0.39	
832.00	3.470	312.040	831.64	-9.72	12.48	-10.76	0.86	
922.00	3.640	317.990	921.47	-13.33	16.43	-14.69	0.45	
1012.00	5.350	329.070	1011.19	-16.92	22.15	-18.76	2.12	
1102.00	7.130	334.140	1100.65	-20.81	30.78	-23.36	2.07	
1192.00	7.510	337.790	1189.92	-24.61	41.25	-28.01	0.67	
1282.00	7.820	339.690	1279.11	-28.05	52.44	-32.36	0.44	
1372.00	7.620	337.990	1368.30	-31.49	63.71	-36.72	0.34	
1462.00	7.630	337.970	1457.50	-35.07	74.78	-41.20	0.01	
1552.00	7.440	339.180	1546.73	-38.49	85.77	-45.51	0.28	
1642.00	7.320	338.990	1635.98	-41.73	96.56	-49.64	0.14	
1744.00	7.210	335.330	1737.16	-45.76	108.45	-54.64	0.47	
1837.00	6.130	334.400	1829.53	-49.55	118.23	-59.22	1.17	
1882.00	5.720	333.590	1874.29	-51.24	122.40	-61.26	0.93	
1971.00	8.360	339.420	1962.61	-54.67	132.44	-65.51	3.07	
2060.00	8.270	336.630	2050.68	-58.51	144.37	-70.32	0.46	
2150.00	8.180	332.950	2139.75	-63.04	156.01	-75.80	0.59	
2239.00	8.160	330.220	2227.85	-68.14	167.13	-81.82	0.44	
2329.00	8.180	331.010	2316.94	-73.50	178.28	-88.09	0.13	
2418.00	8.350	329.910	2405.01	-78.90	189.41	-94.40	0.26	
2508.00	8.040	331.000	2494.09	-84.31	200.57	-100.73	0.39	
2597.00	8.230	335.460	2582.20	-89.05	211.80	-106.39	0.74	
2687.00	8.420	340.470	2671.25	-92.95	223.88	-111.27	0.83	
2776.00	8.400	344.160	2759.29	-95.89	236.27	-115.22	0.61	
2866.00	7.840	349.990	2848.39	-97.75	248.64	-118.08	1.11	
2955.00	7.700	353.180	2936.58	-98.56	260.54	-119.85	0.51	
3044.00	7.880	355.530	3024.76	-98.77	272.54	-121.03	0.41	
3134.00	8.000	354.150	3113.89	-98.89	284.92	-122.15	0.25	
3224.00	7.720	341.850	3203.05	-100.45	296.90	-124.67	1.89	
3313.00	7.590	344.240	3291.26	-102.98	308.23	-128.13	0.39	
3403.00	7.630	347.870	3380.47	-104.92	319.80	-131.00	0.54	
3492.00	7.840	351.770	3468.66	-106.08	331.58	-133.11	0.64	
3582.00	7.720	354.120	3557.83	-106.60	343.67	-134.61	0.38	
3672.00	7.610	355.220	3647.03	-106.75	355.62	-135.72	0.20	
3761.00	7.650	344.580	3735.24	-107.88	367.20	-137.79	1.59	
3851.00	7.620	331.870	3824.45	-111.39	378.24	-142.20	1.87	

Actual Wellpath Report

LEFFLER 1C-23-L AWP

Page 3 of 8



REFERENCE WELLPATH IDENTIFICATION

Operator	SRC ENERGY	Slot	SLOT#05 LEFFLER 1C-23-L (1881'FNL & 275'FEL SEC.21)
Area	COLORADO	Well	LEFFLER 1C-23-L
Field	WELD COUNTY (NAD83,TRUE NORTH)	Wellbore	LEFFLER 1C-23-L AWP
Facility	SEC.21-T06N-R66W		

WELLPATH DATA (203 stations)

MD [ft]	Inclination [°]	Azimuth [°]	TVD [ft]	Vert Sect [ft]	North [ft]	East [ft]	DLS [°/100ft]	Comments
3940.00	7.860	322.530	3912.64	-117.05	388.28	-148.68	1.44	
4030.00	7.680	317.320	4001.82	-124.10	397.58	-156.50	0.81	
4119.00	7.530	315.790	4090.04	-131.48	406.13	-164.60	0.28	
4209.00	8.150	315.550	4179.19	-139.33	414.91	-173.18	0.69	
4298.00	7.840	320.480	4267.33	-146.85	424.10	-181.46	0.85	
4388.00	7.980	326.490	4356.48	-153.38	434.04	-188.81	0.93	
4477.00	7.910	333.570	4444.62	-158.64	444.68	-194.95	1.10	
4567.00	8.000	330.000	4533.76	-163.63	455.65	-200.84	0.56	
4656.00	8.070	321.770	4621.89	-169.75	465.92	-207.80	1.29	
4746.00	8.090	321.120	4710.99	-176.81	475.81	-215.69	0.10	
4835.00	8.050	326.910	4799.11	-183.31	485.91	-223.02	0.91	
4925.00	8.080	341.880	4888.23	-187.80	497.20	-228.43	2.33	
5014.00	8.050	345.870	4976.35	-190.29	509.19	-231.89	0.63	
5104.00	8.230	344.560	5065.45	-192.55	521.51	-235.15	0.29	
5193.00	8.200	343.760	5153.53	-195.02	533.74	-238.62	0.13	
5283.00	8.160	339.270	5242.62	-198.09	545.88	-242.67	0.71	
5373.00	7.880	332.900	5331.74	-202.23	557.34	-247.75	1.03	
5462.00	7.910	324.070	5419.90	-207.75	567.73	-254.12	1.36	
5551.00	7.750	324.030	5508.07	-214.05	577.55	-261.24	0.18	
5641.00	7.550	336.580	5597.28	-219.12	587.89	-267.15	1.87	
5731.00	8.090	349.410	5686.45	-221.69	599.54	-270.67	2.03	
5820.00	7.600	355.560	5774.61	-222.32	611.56	-272.27	1.09	
5909.00	7.610	356.320	5862.83	-222.21	623.31	-273.11	0.11	
5999.00	7.930	0.870	5952.01	-221.53	635.47	-273.39	0.77	
6088.00	8.670	0.890	6040.07	-220.30	648.31	-273.20	0.83	
6179.00	8.750	356.430	6130.02	-219.52	662.08	-273.52	0.75	
6268.00	8.610	352.690	6218.01	-219.71	675.44	-274.79	0.65	
6358.00	8.650	348.620	6306.99	-220.83	688.76	-276.98	0.68	
6447.00	8.610	342.130	6394.98	-223.15	701.66	-280.35	1.09	
6537.00	8.590	334.510	6483.97	-227.09	714.14	-285.31	1.27	
6626.00	8.090	346.790	6572.04	-230.40	726.24	-289.60	2.07	
6715.00	13.110	25.680	6659.60	-226.24	741.46	-286.65	9.52	
6805.00	18.290	53.830	6746.33	-209.02	759.03	-270.80	10.08	
6894.00	22.250	88.000	6830.09	-180.18	767.89	-242.57	13.80	
6984.00	30.990	87.670	6910.47	-139.93	769.43	-202.32	9.71	
7073.00	41.410	78.670	6982.24	-87.62	776.17	-150.38	13.12	
7163.00	50.700	75.880	7044.64	-23.57	790.55	-87.28	10.56	
7252.00	58.200	80.580	7096.37	48.21	805.16	-16.45	9.46	
7342.00	68.270	83.590	7136.85	128.32	816.12	63.04	11.58	
7432.00	78.000	83.880	7162.93	214.31	825.50	148.55	10.82	
7521.00	77.940	85.370	7181.48	301.35	833.66	235.21	1.64	
7611.00	88.610	87.010	7192.01	390.59	839.57	324.27	11.99	
7700.00	89.630	88.090	7193.37	479.51	843.38	413.17	1.67	LANDING POINT (1044'FNL & 138'FWL, SEC. 22)
7790.00	89.780	89.550	7193.84	569.35	845.23	503.15	1.63	
7879.00	89.750	93.140	7194.20	657.85	843.14	592.11	4.03	

Actual Wellpath Report

LEFFLER 1C-23-L AWP

Page 4 of 8



REFERENCE WELLPATH IDENTIFICATION

Operator	SRC ENERGY	Slot	SLOT#05 LEFFLER 1C-23-L (1881'FNL & 275'FEL SEC.21)
Area	COLORADO	Well	LEFFLER 1C-23-L
Field	WELD COUNTY (NAD83,TRUE NORTH)	Wellbore	LEFFLER 1C-23-L AWB
Facility	SEC.21-T06N-R66W		

WELLPATH DATA (203 stations)

MD [ft]	Inclination [°]	Azimuth [°]	TVD [ft]	Vert Sect [ft]	North [ft]	East [ft]	DLS [°/100ft]	Comments
7969.00	89.660	94.550	7194.67	746.87	837.11	681.90	1.57	
8058.00	89.750	94.960	7195.12	834.69	829.73	770.60	0.47	
8148.00	90.150	94.420	7195.20	923.50	822.37	860.29	0.75	
8237.00	90.060	92.020	7195.04	1011.67	817.37	949.15	2.70	
8327.00	90.710	91.510	7194.43	1101.11	814.60	1039.10	0.92	
8416.00	90.370	91.920	7193.60	1189.57	811.94	1128.06	0.60	
8505.00	90.740	92.970	7192.73	1277.89	808.14	1216.97	1.25	
8595.00	89.820	92.680	7192.29	1367.13	803.70	1306.86	1.07	
8684.00	89.940	91.450	7192.48	1455.53	800.50	1395.80	1.39	
8774.00	89.910	93.730	7192.60	1544.81	796.43	1485.70	2.53	
8863.00	89.970	92.940	7192.69	1632.96	791.25	1574.55	0.89	
8953.00	89.880	89.660	7192.81	1722.47	789.21	1664.51	3.65	
9042.00	89.690	85.570	7193.14	1811.38	792.91	1753.42	4.60	
9132.00	89.820	84.890	7193.53	1901.38	800.40	1843.10	0.77	
9221.00	89.570	85.440	7194.00	1990.38	807.90	1931.79	0.68	
9311.00	90.120	86.330	7194.24	2080.38	814.36	2021.55	1.16	
9400.00	88.250	87.830	7195.51	2169.32	818.89	2110.42	2.69	
9490.00	89.880	90.920	7196.98	2259.08	819.87	2200.39	3.88	
9579.00	90.000	92.790	7197.07	2347.51	816.99	2289.34	2.11	
9669.00	89.820	92.200	7197.21	2436.82	813.07	2379.25	0.69	
9758.00	89.820	90.380	7197.49	2525.35	811.07	2468.23	2.04	
9847.00	89.880	88.960	7197.73	2614.10	811.58	2557.22	1.60	
9937.00	89.820	88.520	7197.96	2703.94	813.56	2647.20	0.49	
10026.00	89.720	88.490	7198.32	2792.81	815.88	2736.17	0.12	
10116.00	89.110	88.930	7199.24	2882.66	817.91	2826.14	0.84	
10205.00	88.950	90.150	7200.75	2971.41	818.62	2915.12	1.38	
10295.00	89.630	89.740	7201.86	3061.12	818.71	3005.12	0.88	
10384.00	90.000	87.780	7202.15	3149.96	820.64	3094.09	2.24	
10474.00	89.540	88.950	7202.51	3239.84	823.20	3184.05	1.40	
10563.00	89.600	90.530	7203.18	3328.58	823.61	3273.04	1.78	
10653.00	89.600	89.840	7203.81	3418.26	823.32	3363.04	0.77	
10742.00	89.290	89.920	7204.67	3506.98	823.50	3452.04	0.36	
10832.00	89.350	90.960	7205.74	3596.63	822.81	3542.03	1.16	
10921.00	89.480	90.280	7206.64	3685.25	821.85	3631.02	0.78	
11011.00	89.350	90.410	7207.56	3774.91	821.31	3721.01	0.20	
11100.00	89.910	90.560	7208.14	3863.56	820.55	3810.00	0.65	
11190.00	89.910	90.730	7208.28	3953.18	819.54	3900.00	0.19	
11279.00	89.940	91.220	7208.40	4041.76	818.03	3988.99	0.55	
11368.00	89.660	88.420	7208.71	4130.49	818.31	4077.98	3.16	
11458.00	89.600	88.490	7209.29	4220.36	820.73	4167.94	0.10	
11548.00	89.660	91.470	7209.87	4310.06	820.76	4257.93	3.31	
11637.00	89.720	93.880	7210.35	4398.33	816.61	4346.82	2.71	
11727.00	89.720	92.270	7210.79	4487.52	811.78	4436.69	1.79	
11816.00	89.850	90.180	7211.12	4576.06	809.88	4525.66	2.35	
11906.00	89.200	88.570	7211.87	4665.83	810.86	4615.65	1.93	

Actual Wellpath Report

LEFFLER 1C-23-L AWP

Page 5 of 8



REFERENCE WELLPATH IDENTIFICATION

Operator	SRC ENERGY	Slot	SLOT#05 LEFFLER 1C-23-L (1881'FNL & 275'FEL SEC.21)
Area	COLORADO	Well	LEFFLER 1C-23-L
Field	WELD COUNTY (NAD83,TRUE NORTH)	Wellbore	LEFFLER 1C-23-L AWB
Facility	SEC.21-T06N-R66W		

WELLPATH DATA (203 stations)

MD [ft]	Inclination [°]	Azimuth [°]	TVD [ft]	Vert Sect [ft]	North [ft]	East [ft]	DLS [°/100ft]	Comments
11995.00	88.980	89.890	7213.28	4754.62	812.06	4704.63	1.50	
12085.00	89.260	88.570	7214.67	4844.41	813.27	4794.61	1.50	
12174.00	88.980	87.250	7216.03	4933.31	816.51	4883.54	1.52	
12263.00	88.980	86.810	7217.62	5022.26	821.12	4972.40	0.49	
12353.00	88.950	87.290	7219.24	5112.21	825.75	5062.27	0.53	
12442.00	88.920	88.300	7220.90	5201.11	829.18	5151.19	1.14	
12532.00	89.050	88.040	7222.49	5290.99	832.05	5241.13	0.32	
12622.00	89.110	89.430	7223.94	5380.82	834.04	5331.09	1.55	
12711.00	90.030	90.830	7224.61	5469.52	833.84	5420.09	1.88	
12800.00	91.820	90.040	7223.17	5558.16	833.16	5509.07	2.20	
12890.00	91.750	90.340	7220.37	5647.80	832.86	5599.02	0.34	
12979.00	91.690	89.610	7217.69	5736.47	832.90	5687.98	0.82	
13069.00	92.090	89.300	7214.73	5826.20	833.76	5777.93	0.56	
13158.00	91.450	88.770	7211.98	5914.98	835.25	5866.87	0.93	
13248.00	91.290	89.790	7209.82	6004.74	836.38	5956.84	1.15	
13337.00	91.540	92.130	7207.63	6093.29	834.89	6045.79	2.64	
13427.00	91.390	92.350	7205.33	6182.62	831.38	6135.70	0.30	
13516.00	91.350	91.540	7203.20	6271.01	828.36	6224.62	0.91	
13606.00	91.200	90.930	7201.20	6360.52	826.42	6314.57	0.70	
13695.00	91.940	91.120	7198.76	6449.06	824.83	6403.53	0.86	
13785.00	91.660	88.230	7195.93	6538.76	825.34	6493.47	3.22	
13874.00	91.660	85.810	7193.35	6627.68	829.96	6582.31	2.72	
13964.00	90.490	87.740	7191.66	6717.63	835.02	6672.14	2.51	
14053.00	90.550	92.390	7190.85	6806.31	834.92	6761.11	5.22	
14143.00	89.850	96.510	7190.54	6895.17	827.94	6850.82	4.64	
14233.00	89.720	94.500	7190.88	6983.76	819.31	6940.40	2.24	
14322.00	88.770	90.430	7192.05	7072.06	815.48	7029.29	4.70	
14411.00	88.740	88.900	7193.98	7160.79	816.00	7118.27	1.72	
14501.00	88.650	87.470	7196.03	7250.66	818.85	7208.20	1.59	
14590.00	88.460	87.080	7198.28	7339.58	823.08	7297.07	0.49	
14680.00	88.680	89.210	7200.52	7429.44	825.99	7386.99	2.38	
14769.00	90.460	91.250	7201.19	7518.12	825.64	7475.98	3.04	
14859.00	91.970	92.000	7199.28	7607.56	823.08	7565.92	1.87	
14948.00	91.910	92.450	7196.27	7695.88	819.63	7654.80	0.51	
15038.00	90.890	90.790	7194.07	7785.32	817.09	7744.73	2.16	
15127.00	90.620	88.880	7192.90	7874.04	817.34	7833.72	2.17	
15217.00	90.770	88.180	7191.81	7963.90	819.65	7923.68	0.80	
15307.00	91.020	89.290	7190.40	8053.73	821.64	8013.65	1.26	
15396.00	90.800	89.180	7188.99	8142.52	822.83	8102.63	0.28	
15486.00	90.950	91.020	7187.61	8232.21	822.67	8192.61	2.05	
15575.00	90.770	91.050	7186.28	8320.77	821.06	8281.59	0.21	
15665.00	91.050	91.370	7184.85	8410.29	819.16	8371.56	0.47	
15754.00	90.890	91.170	7183.34	8498.81	817.19	8460.52	0.29	
15843.00	90.800	88.770	7182.03	8587.51	817.24	8549.51	2.70	
15933.00	90.650	87.750	7180.89	8677.39	819.97	8639.46	1.15	

Actual Wellpath Report

LEFFLER 1C-23-L AWP

Page 6 of 8



REFERENCE WELLPATH IDENTIFICATION

Operator	SRC ENERGY	Slot	SLOT#05 LEFFLER 1C-23-L (1881'FNL & 275'FEL SEC.21)
Area	COLORADO	Well	LEFFLER 1C-23-L
Field	WELD COUNTY (NAD83,TRUE NORTH)	Wellbore	LEFFLER 1C-23-L AWB
Facility	SEC.21-T06N-R66W		

WELLPATH DATA (203 stations)

MD [ft]	Inclination [°]	Azimuth [°]	TVD [ft]	Vert Sect [ft]	North [ft]	East [ft]	DLS [°/100ft]	Comments
16023.00	90.650	84.280	7179.87	8767.37	826.22	8729.22	3.86	
16112.00	90.990	83.890	7178.60	8856.33	835.39	8817.74	0.58	
16202.00	90.990	86.380	7177.04	8946.31	843.02	8907.39	2.77	
16291.00	90.860	87.000	7175.60	9035.28	848.16	8996.23	0.71	
16381.00	90.550	85.980	7174.50	9125.25	853.67	9086.05	1.18	
16470.00	90.250	84.210	7173.88	9214.25	861.28	9174.72	2.02	
16560.00	89.230	84.620	7174.28	9304.23	870.04	9264.29	1.22	
16650.00	89.600	88.150	7175.20	9394.20	875.71	9354.09	3.94	
16739.00	88.770	91.450	7176.47	9482.91	876.02	9443.07	3.82	
16829.00	88.890	90.100	7178.31	9572.50	874.81	9533.04	1.51	
16918.00	88.310	88.670	7180.48	9661.25	875.76	9622.01	1.73	
17008.00	87.380	88.990	7183.87	9751.03	877.60	9711.92	1.09	
17097.00	88.580	88.130	7187.00	9839.83	879.83	9800.84	1.66	
17187.00	91.140	86.930	7187.22	9929.76	883.71	9890.75	3.14	
17276.00	91.510	87.490	7185.16	10018.69	888.04	9979.62	0.75	
17365.00	91.450	95.440	7182.86	10107.09	885.77	10068.49	8.93	
17455.00	91.540	96.420	7180.51	10195.55	876.48	10157.97	1.09	
17545.00	91.660	96.050	7178.00	10283.91	866.70	10247.40	0.43	
17634.00	91.600	94.280	7175.47	10371.58	858.70	10336.00	1.99	
17723.00	91.600	93.170	7172.98	10459.60	852.92	10424.78	1.25	
17813.00	91.510	92.660	7170.54	10548.80	848.34	10514.63	0.58	
17851.00	91.450	92.420	7169.56	10586.49	846.66	10552.58	0.65	LAST BHI MWD SURVEY (1019'FNL & 422'FEL, SEC.23)
17875.00	91.450	92.420	7168.95	10610.30	845.64	10576.55	0.00	PROJECTION TO BIT (1020'FNL & 398'FEL, SEC.23)

HOLE & CASING SECTIONS - Ref Wellbore: LEFFLER 1C-23-L AWB Ref Wellpath: LEFFLER 1C-23-L AWP

String/Diameter	Start MD [ft]	End MD [ft]	Interval [ft]	Start TVD [ft]	End TVD [ft]	Start N/S [ft]	Start E/W [ft]	End N/S [ft]	End E/W [ft]
13.5in Open Hole	25.00	1783.00	1758.00	25.00	1775.87	0.00	0.00	112.75	-56.63
9.625in Casing Surface	25.00	1783.00	1758.00	25.00	1775.87	0.00	0.00	112.75	-56.63
8.5in Open Hole	1783.00	17875.00	16092.00	1775.87	7168.95	112.75	-56.63	845.64	10576.55

Actual Wellpath Report

LEFFLER 1C-23-L AWP

Page 7 of 8



REFERENCE WELLPATH IDENTIFICATION

Operator	SRC ENERGY	Slot	SLOT#05 LEFFLER 1C-23-L (1881'FNL & 275'FEL SEC.21)
Area	COLORADO	Well	LEFFLER 1C-23-L
Field	WELD COUNTY (NAD83,TRUE NORTH)	Wellbore	LEFFLER 1C-23-L AWB
Facility	SEC.21-T06N-R66W		

TARGETS

Name	TVD [ft]	North [ft]	East [ft]	Grid East [US ft]	Grid North [US ft]	Latitude	Longitude	Shape
SEC.23-T06N-R66W	21.00	79.85	0.00	3201871.60	1417148.27	40°28'34.342"N	104°46'27.660"W	polygon
SEC.21-T06N-R66W	35.00	-2739.20	-6141.60	3195753.51	1414279.17	40°28'06.478"N	104°47'47.123"W	polygon
SEC.22-T06N-R66W	35.00	-2739.20	-6141.60	3195753.51	1414279.17	40°28'06.478"N	104°47'47.123"W	polygon
LEFFLER 1C-23-L BHL REV-2 (1023'FNL & 510'FEL SEC.23)	7170.82	842.36	10464.46	3212329.08	1417996.35	40°28'41.855"N	104°44'12.246"W	point
LEFFLER 1C-23-L BHL REV-1 (1023'FNL & 510'FEL SEC.23)	7173.00	842.35	10464.46	3212329.08	1417996.35	40°28'41.855"N	104°44'12.246"W	point
LEFFLER 1C-23-L TOP OF PROD REV-2 (1078'FNL & 75'FWL SEC.22)	7199.01	808.99	350.25	3202215.86	1417880.23	40°28'41.547"N	104°46'23.128"W	point
LEFFLER 1C-23-L TOP OF PROD ON PLAT (1029'FNL & 75'FWL SEC.22)	7220.00	857.99	350.25	3202215.46	1417929.22	40°28'42.031"N	104°46'23.128"W	point
LEFFLER 1C-23-L TOP OF PROD REV-1 (1078'FNL & 75'FWL SEC.22)	7220.00	808.99	350.25	3202215.86	1417880.23	40°28'41.547"N	104°46'23.128"W	point

WELLPATH COMPOSITION - Ref Wellbore: LEFFLER 1C-23-L AWB Ref Wellpath: LEFFLER 1C-23-L AWP

Start MD [ft]	End MD [ft]	Positional Uncertainty Model	Log Name/Comment	Wellbore
25.00	1744.00	Custom BHI NaviTrak (Standard Rotating+Axial Corr) (Rockies 0.03Gt model)	BHI NAVITRAK W/EM 13.5"(STD ROTATING, AXIAL, ROCKIES GT)<112-1744>	LEFFLER 1C-23-L AWB
1744.00	17851.00	Custom BHI AutoTrak Curve (IFR1, Short) (Rockies 0.03Gt model)	Custom BHI AutoTrak Curve (IFR1, Short) (Rockies 0.03Gt model) <1837'-17851'>	LEFFLER 1C-23-L AWB
17851.00	17875.00	Blind Drilling (std)	Projection to bit	LEFFLER 1C-23-L AWB

Actual Wellpath Report

LEFFLER 1C-23-L AWP

Page 8 of 8



REFERENCE WELLPATH IDENTIFICATION

Operator	SRC ENERGY	Slot	SLOT#05 LEFFLER 1C-23-L (1881'FNL & 275'FEL SEC.21)
Area	COLORADO	Well	LEFFLER 1C-23-L
Field	WELD COUNTY (NAD83,TRUE NORTH)	Wellbore	LEFFLER 1C-23-L AWB
Facility	SEC.21-T06N-R66W		

WELLPATH COMMENTS

MD [ft]	Inclination [°]	Azimuth [°]	TVD [ft]	Comment
7700.00	89.630	88.090	7193.37	LANDING POINT (1044'FNL & 138'FWL, SEC. 22)
17851.00	91.450	92.420	7169.56	LAST BHI MWD SURVEY (1019'FNL & 422'FEL, SEC.23)
17875.00	91.450	92.420	7168.95	PROJECTION TO BIT (1020'FNL & 398'FEL, SEC.23)