

SRC ENERGY

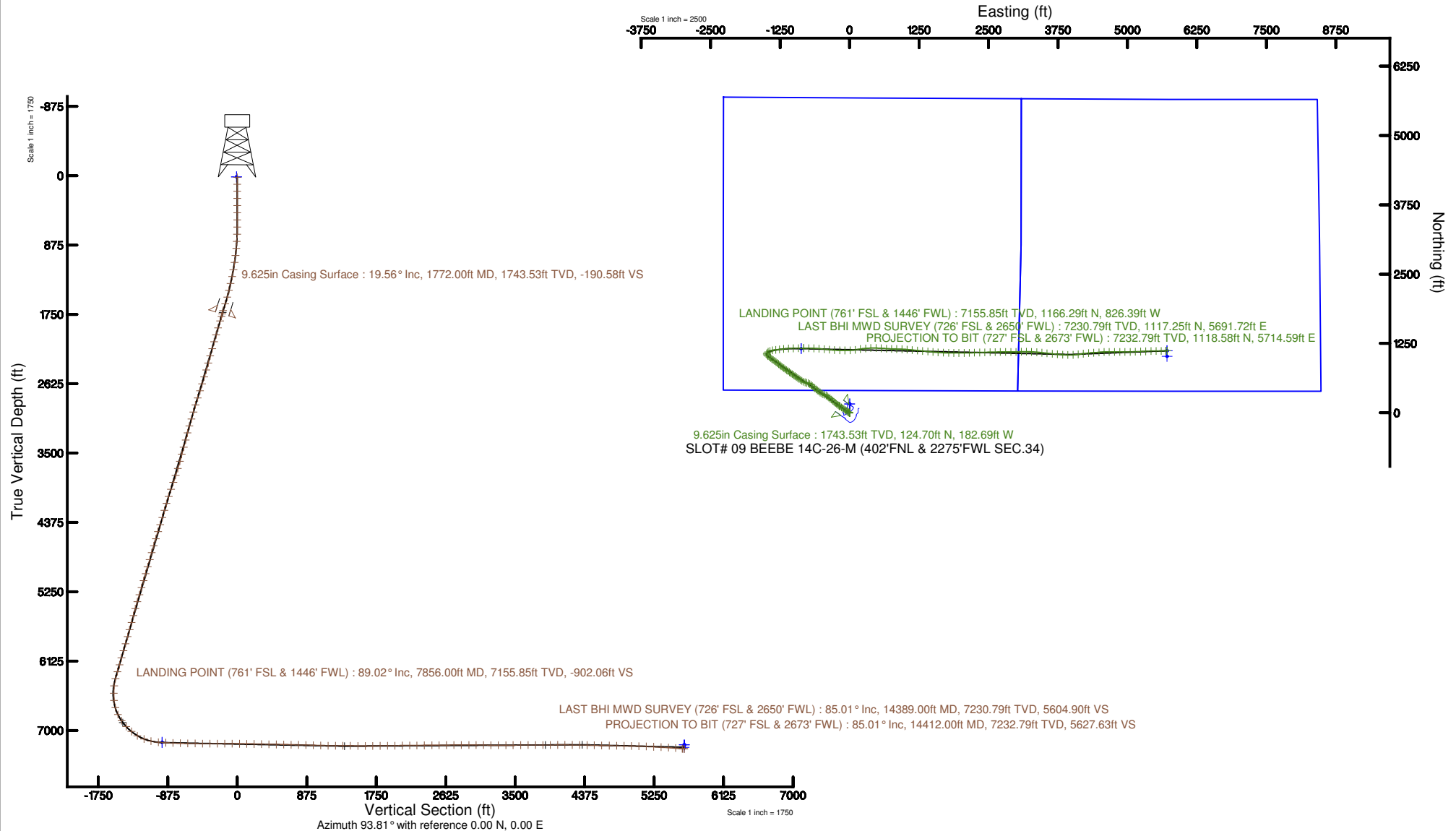
Location: COLORADO Slot: SLOT# 09 BEEBE 14C-26-M (402'FNL & 2275'FWL SEC.34)
 Field: WELD COUNTY (NAD83,TRUE NORTH) Well: BEEBE 14C-26-M
 Facility: SEC.34-T06N-R66W Wellbore: BEEBE 14C-26-M PWB



SRC ENERGY



Plot reference wellpath is BEEBE 14C-26-M REV-B.0 PWP	Grid System: NAD83 / Lambert Colorado SP, Northern Zone (501), US feet
True vertical depths are referenced to PRECISION 462 (20') (RKB)	* = Wellpath was transformed from a different geodetic datum
Measured depths are referenced to PRECISION 462 (20') (RKB)	North Reference: True north
PRECISION 462 (20') (RKB) to Mean Sea Level: 4721 feet	Scale: True distance
Mean Sea Level to Mud line (At Slot: SLOT# 09 BEEBE 14C-26-M (402'FNL & 2275'FWL SEC.34)): 0 feet	Depths are in feet
Coordinates are in feet referenced to Slot	Created by: cantryat on 2017-07-12
	Database: Denver





Actual Wellpath Report

BEEBE 14C-26-M AWP

Page n of nn



REFERENCE WELLPATH IDENTIFICATION

Operator	SRC ENERGY	Slot	SLOT# 09 BEEBE 14C-26-M (402'FNL & 2275'FWL SEC.34)
Area	COLORADO	Well	BEEBE 14C-26-M
Field	WELD COUNTY (NAD83,TRUE NORTH)	Wellbore	BEEBE 14C-26-M AWB
Facility	SEC.34-T06N-R66W		

REPORT SETUP INFORMATION

Projection System	NAD83 / Lambert Colorado SP, Northern Zone (501), US feet	Software System	WellArchitect® 5.0
North Reference	True	User	Cantryat
Scale	0.999963	Report Generated	7/12/2017 at 12:42:34 PM
Convergence at slot	0.48° East	Database/Source file	Denver/BEEBE_14C-26-M_AWP.xml

WELLPATH LOCATION

	Local coordinates		Grid coordinates		Geographic coordinates	
	North[ft]	East[ft]	Easting[US ft]	Northing[US ft]	Latitude	Longitude
Slot Location	-160.00	-1.16	3204488.39	1408015.61	40°27'03.884"N	104°45'54.778"W
Facility Reference Pt			3204488.23	1408175.60	40°27'05.465"N	104°45'54.763"W
Field Reference Pt			3171284.48	1426358.81	40°30'07.643"N	104°53'02.634"W

WELLPATH DATUM

Calculation method	Minimum curvature	PRECISION 462 (20') (RKB) to Facility Vertical Datum	4721.00ft
Horizontal Reference Pt	Slot	PRECISION 462 (20') (RKB) to Mean Sea Level	4721.00ft
Vertical Reference Pt	PRECISION 462 (20') (RKB)	PRECISION 462 (20') (RKB) to Mud Line at Slot (SLOT# 09 BEEBE 14C-26-M (402'FNL & 2275'FWL SEC.34))	4721.00ft
MD Reference Pt	PRECISION 462 (20') (RKB)	Section Origin	N 0.00, E 0.00 ft
Field Vertical Reference	Mean Sea Level	Section Azimuth	93.81°



Actual Wellpath Report

BEEBE 14C-26-M AWP

Page n of nn



REFERENCE WELLPATH IDENTIFICATION

Operator	SRC ENERGY	Slot	SLOT# 09 BEEBE 14C-26-M (402'FNL & 2275'FWL SEC.34)
Area	COLORADO	Well	BEEBE 14C-26-M
Field	WELD COUNTY (NAD83,TRUE NORTH)	Wellbore	BEEBE 14C-26-M AWB
Facility	SEC.34-T06N-R66W		

WELLPATH DATA (158 stations) † = interpolated/extrapolated station

MD (ft)	Inclination (°)	Azimuth (°)	TVD (ft)	Vert Sect (ft)	North (ft)	East (ft)	DLS (°/100ft)	Comments
0.00†	0.000	197.320	0.00	0.00	0.00	0.00	0.00	
20.00	0.000	197.320	20.00	0.00	0.00	0.00	0.00	
108.00	0.240	197.320	108.00	-0.04	-0.18	-0.05	0.27	
195.00	0.240	182.820	195.00	-0.08	-0.53	-0.12	0.07	
287.00	0.420	172.020	287.00	-0.01	-1.06	-0.08	0.21	
378.00	0.470	191.240	377.99	0.01	-1.75	-0.11	0.17	
468.00	0.350	194.050	467.99	-0.09	-2.38	-0.25	0.14	
558.00	0.430	178.110	557.99	-0.10	-2.99	-0.30	0.15	
648.00	0.480	286.730	647.99	-0.44	-3.22	-0.65	0.82	
738.00	2.410	311.030	737.96	-2.31	-1.87	-2.44	2.20	
828.00	4.610	312.320	827.78	-6.65	1.81	-6.54	2.45	
918.00	5.970	304.230	917.40	-13.51	6.88	-13.09	1.72	
1008.00	7.770	300.930	1006.75	-22.97	12.64	-22.18	2.05	
1098.00	9.490	303.000	1095.73	-34.86	19.81	-33.62	1.94	
1188.00	11.650	303.560	1184.19	-49.23	28.87	-47.41	2.40	
1278.00	13.470	304.640	1272.04	-66.12	39.86	-63.61	2.04	
1368.00	15.100	306.310	1359.25	-85.01	52.76	-81.68	1.87	
1458.00	15.630	306.580	1446.03	-105.09	66.92	-100.87	0.59	
1548.00	17.630	305.390	1532.27	-126.90	82.04	-121.71	2.25	
1638.00	19.970	304.450	1617.46	-151.74	98.63	-145.50	2.62	
1728.00	19.790	305.420	1702.09	-177.93	116.16	-170.59	0.42	
1804.00	19.390	304.730	1773.70	-199.71	130.80	-191.45	0.61	
1866.00	18.880	304.360	1832.27	-217.18	142.33	-208.18	0.85	
1958.00	18.760	307.380	1919.35	-242.33	159.71	-232.23	1.07	
2051.00	19.140	309.420	2007.31	-267.18	178.47	-255.89	0.82	
2144.00	19.160	311.580	2095.17	-291.64	198.28	-279.08	0.76	
2238.00	19.050	310.310	2183.99	-316.17	218.44	-302.32	0.46	
2332.00	19.040	308.940	2272.85	-341.04	238.00	-325.95	0.48	
2427.00	19.050	310.420	2362.65	-366.16	257.80	-349.80	0.51	
2520.00	19.020	307.710	2450.56	-390.92	276.91	-373.35	0.95	



Actual Wellpath Report

BEEBE 14C-26-M AWP

Page n of nn



REFERENCE WELLPATH IDENTIFICATION

Operator	SRC ENERGY	Slot	SLOT# 09 BEEBE 14C-26-M (402'FNL & 2275'FWL SEC.34)
Area	COLORADO	Well	BEEBE 14C-26-M
Field	WELD COUNTY (NAD83,TRUE NORTH)	Wellbore	BEEBE 14C-26-M AWP
Facility	SEC.34-T06N-R66W		

WELLPATH DATA (158 stations)

MD (ft)	Inclination (°)	Azimuth (°)	TVD (ft)	Vert Sect (ft)	North (ft)	East (ft)	DLS (°/100ft)	Comments
2613.00	19.030	305.030	2538.49	-416.46	294.88	-397.75	0.94	
2706.00	19.300	301.900	2626.33	-442.99	311.70	-423.21	1.14	
2799.00	18.540	292.210	2714.33	-470.59	325.42	-449.96	3.47	
2893.00	18.720	291.850	2803.40	-499.11	336.68	-477.79	0.23	
2987.00	18.640	301.250	2892.47	-526.79	350.09	-504.64	3.20	
3081.00	18.890	304.840	2981.48	-553.16	366.58	-529.98	1.26	
3174.00	18.720	307.140	3069.52	-578.53	384.19	-554.23	0.82	
3268.00	18.740	310.080	3158.54	-603.31	403.02	-577.81	1.00	
3361.00	18.520	310.550	3246.67	-627.19	422.24	-600.46	0.29	
3455.00	18.690	311.010	3335.76	-651.15	441.83	-623.17	0.24	
3549.00	18.550	310.150	3424.84	-675.19	461.35	-645.96	0.33	
3644.00	18.520	310.020	3514.91	-699.54	480.80	-669.07	0.05	
3738.00	18.800	311.030	3603.97	-723.64	500.34	-691.93	0.45	
3833.00	19.000	303.680	3693.86	-749.25	518.97	-716.35	2.51	
3927.00	18.910	288.460	3782.82	-777.27	532.29	-743.55	5.25	
4019.00	18.960	284.920	3869.84	-806.36	540.85	-772.13	1.25	
4111.00	19.000	288.370	3956.84	-835.52	549.42	-800.78	1.22	
4206.00	19.000	296.200	4046.68	-864.79	561.13	-829.34	2.68	
4301.00	19.060	302.850	4136.50	-892.66	576.37	-856.25	2.28	
4393.00	18.970	304.050	4223.48	-918.71	592.89	-881.26	0.44	
4488.00	18.880	304.790	4313.34	-945.23	610.31	-906.68	0.27	
4583.00	19.130	304.180	4403.16	-971.83	627.82	-932.18	0.34	
4677.00	19.190	303.020	4491.96	-998.61	644.89	-957.87	0.41	
4772.00	19.100	303.100	4581.70	-1025.79	661.89	-983.99	0.10	
4865.00	19.130	306.530	4669.58	-1051.88	679.27	-1008.98	1.21	
4958.00	19.110	305.680	4757.45	-1077.63	697.22	-1033.59	0.30	
5051.00	19.090	306.480	4845.33	-1103.36	715.14	-1058.18	0.28	
5146.00	18.970	305.460	4935.14	-1129.59	733.33	-1083.25	0.37	
5238.00	18.910	304.650	5022.16	-1155.11	750.48	-1107.69	0.29	
5332.00	19.090	305.840	5111.04	-1181.22	768.15	-1132.69	0.45	



Actual Wellpath Report

BEEBE 14C-26-M AWP

Page n of nn



REFERENCE WELLPATH IDENTIFICATION

Operator	SRC ENERGY	Slot	SLOT# 09 BEEBE 14C-26-M (402'FNL & 2275'FWL SEC.34)
Area	COLORADO	Well	BEEBE 14C-26-M
Field	WELD COUNTY (NAD83,TRUE NORTH)	Wellbore	BEEBE 14C-26-M AWB
Facility	SEC.34-T06N-R66W		

WELLPATH DATA (158 stations)

MD [ft]	Inclination [°]	Azimuth [°]	TVD [ft]	Vert Sect [ft]	North [ft]	East [ft]	DLS [°/100ft]	Comments
5425.00	18.870	305.760	5198.98	-1206.88	785.84	-1157.22	0.24	
5519.00	19.070	305.780	5287.87	-1232.80	803.70	-1182.01	0.21	
5611.00	19.030	305.500	5374.84	-1258.32	821.20	-1206.41	0.11	
5705.00	18.790	307.080	5463.76	-1284.01	839.22	-1230.97	0.60	
5797.00	18.930	311.360	5550.83	-1308.23	858.02	-1253.99	1.51	
5891.00	19.180	311.700	5639.68	-1332.51	878.37	-1276.96	0.29	
5985.00	18.660	308.430	5728.60	-1357.07	897.99	-1300.27	1.26	
6078.00	19.020	306.820	5816.62	-1382.02	916.32	-1324.06	0.68	
6173.00	18.870	305.250	5906.47	-1408.11	934.46	-1349.00	0.56	
6266.00	18.840	306.440	5994.48	-1433.59	952.06	-1373.36	0.41	
6360.00	18.830	307.950	6083.45	-1458.93	970.40	-1397.53	0.52	
6453.00	18.850	306.700	6171.47	-1483.96	988.61	-1421.41	0.43	
6545.00	18.780	305.900	6258.55	-1508.99	1006.18	-1445.33	0.29	
6639.00	18.680	306.060	6347.57	-1534.54	1023.91	-1469.75	0.12	
6732.00	12.760	335.490	6437.19	-1552.05	1042.07	-1486.09	10.49	
6827.00	10.290	5.350	6530.35	-1556.80	1060.08	-1489.66	6.70	
6921.00	13.940	25.590	6622.28	-1552.37	1078.66	-1483.98	5.90	
7016.00	20.280	51.220	6713.16	-1535.97	1099.35	-1466.16	10.22	
7110.00	26.550	73.370	6799.54	-1504.20	1115.61	-1433.23	11.39	
7203.00	36.320	80.940	6878.82	-1457.74	1125.92	-1385.99	11.31	
7297.00	43.130	83.270	6951.08	-1398.94	1134.08	-1326.51	7.41	
7389.00	50.380	82.180	7014.07	-1333.23	1142.60	-1260.09	7.93	
7481.00	58.730	83.160	7067.38	-1259.75	1152.12	-1185.81	9.12	
7577.00	69.330	87.280	7109.37	-1174.54	1159.16	-1099.94	11.69	
7669.00	77.430	88.110	7135.67	-1086.96	1162.69	-1011.93	8.85	
7762.00	84.330	88.660	7150.40	-995.60	1165.27	-920.20	7.44	
7856.00	89.020	90.090	7155.85	-902.06	1166.29	-826.39	5.22	LANDING POINT (761' FSL & 1446' FWL)
7948.00	87.940	91.550	7158.29	-810.23	1164.98	-734.44	1.97	
8041.00	88.090	92.380	7161.51	-717.33	1161.79	-641.55	0.91	
8134.00	88.860	94.080	7163.98	-624.37	1156.55	-548.74	2.01	



Actual Wellpath Report

BEEBE 14C-26-M AWP

Page n of nn



REFERENCE WELLPATH IDENTIFICATION

Operator	SRC ENERGY	Slot	SLOT# 09 BEEBE 14C-26-M (402'FNL & 2275'FWL SEC.34)
Area	COLORADO	Well	BEEBE 14C-26-M
Field	WELD COUNTY (NAD83,TRUE NORTH)	Wellbore	BEEBE 14C-26-M AWB
Facility	SEC.34-T06N-R66W		

WELLPATH DATA (158 stations)

MD (ft)	Inclination (°)	Azimuth (°)	TVD (ft)	Vert Sect (ft)	North (ft)	East (ft)	DLS (°/100ft)	Comments
8227.00	89.350	96.000	7165.44	-531.41	1148.38	-456.11	2.13	
8321.00	89.570	96.050	7166.32	-437.48	1138.52	-362.63	0.24	
8414.00	89.510	93.680	7167.07	-344.51	1130.63	-269.98	2.55	
8508.00	89.940	91.730	7167.52	-250.53	1126.19	-176.09	2.12	
8601.00	90.400	89.930	7167.25	-157.66	1124.85	-83.10	2.00	
8694.00	89.140	86.770	7167.62	-65.10	1127.52	9.84	3.66	
8789.00	89.380	82.610	7168.85	28.67	1136.31	104.41	4.39	
8881.00	89.010	81.100	7170.14	118.66	1149.35	195.47	1.69	
8976.00	88.890	84.240	7171.88	211.85	1161.46	289.66	3.31	
9070.00	88.830	88.480	7173.75	305.01	1167.43	383.43	4.51	
9164.00	88.950	91.950	7175.57	398.80	1167.08	477.40	3.69	
9257.00	89.010	93.700	7177.23	491.76	1162.49	570.27	1.88	
9350.00	88.550	93.430	7179.21	584.74	1156.71	663.07	0.57	
9443.00	88.680	91.960	7181.46	677.69	1152.34	755.94	1.59	
9536.00	88.770	91.660	7183.53	770.61	1149.40	848.87	0.34	
9629.00	88.400	92.600	7185.82	863.54	1145.95	941.77	1.09	
9723.00	88.550	94.460	7188.32	957.51	1140.16	1035.56	1.98	
9816.00	88.370	95.690	7190.82	1050.45	1131.94	1128.16	1.34	
9910.00	88.520	95.330	7193.37	1144.37	1122.92	1221.69	0.41	
10002.00	90.120	95.710	7194.47	1236.32	1114.07	1313.25	1.79	
10097.00	90.370	94.990	7194.06	1331.29	1105.21	1407.84	0.80	
10190.00	89.050	94.440	7194.53	1424.27	1097.57	1500.52	1.54	
10284.00	88.980	94.020	7196.15	1518.25	1090.63	1594.25	0.45	
10377.00	90.650	93.720	7196.45	1611.25	1084.36	1687.03	1.82	
10472.00	90.490	91.450	7195.50	1706.22	1080.07	1781.92	2.40	
10565.00	90.520	89.790	7194.68	1799.07	1079.07	1874.91	1.79	
10658.00	90.580	90.110	7193.79	1891.85	1079.15	1967.91	0.35	
10752.00	90.620	89.490	7192.81	1985.62	1079.48	2061.90	0.66	
10844.00	90.680	88.200	7191.76	2077.26	1081.33	2153.87	1.40	
10938.00	90.490	88.480	7190.80	2170.83	1084.05	2247.83	0.36	



Actual Wellpath Report

BEEBE 14C-26-M AWP

Page n of nn



REFERENCE WELLPATH IDENTIFICATION

Operator	SRC ENERGY	Slot	SLOT# 09 BEEBE 14C-26-M (402'FNL & 2275'FWL SEC.34)
Area	COLORADO	Well	BEEBE 14C-26-M
Field	WELD COUNTY (NAD83,TRUE NORTH)	Wellbore	BEEBE 14C-26-M AWB
Facility	SEC.34-T06N-R66W		

WELLPATH DATA (158 stations)

MD (ft)	Inclination (°)	Azimuth (°)	TVD (ft)	Vert Sect (ft)	North (ft)	East (ft)	DLS (°/100ft)	Comments
11030.00	90.400	87.910	7190.09	2262.38	1086.95	2339.78	0.63	
11124.00	90.710	88.380	7189.18	2355.92	1089.99	2433.73	0.60	
11219.00	90.340	88.860	7188.31	2450.53	1092.28	2528.70	0.64	
11311.00	90.520	88.170	7187.62	2542.13	1094.67	2620.66	0.78	
11404.00	90.620	89.800	7186.69	2634.79	1096.31	2713.64	1.76	
11497.00	90.460	90.180	7185.81	2727.58	1096.33	2806.63	0.44	
11592.00	90.430	89.950	7185.08	2822.38	1096.22	2901.63	0.24	
11686.00	90.000	88.090	7184.72	2916.04	1097.83	2995.61	2.03	
11779.00	90.250	87.160	7184.52	3008.50	1101.68	3088.53	1.04	
11872.00	88.770	91.680	7185.32	3101.20	1102.62	3181.50	5.11	
11966.00	89.140	93.340	7187.03	3195.15	1098.51	3275.39	1.81	
12059.00	90.220	95.030	7187.55	3288.15	1091.72	3368.13	2.16	
12153.00	90.340	96.160	7187.09	3382.10	1082.56	3461.68	1.21	
12246.00	90.370	96.010	7186.51	3475.02	1072.70	3554.16	0.16	
12341.00	90.310	95.680	7185.95	3569.96	1063.03	3648.66	0.35	
12434.00	90.280	94.800	7185.47	3662.93	1054.53	3741.27	0.95	
12527.00	90.370	93.410	7184.94	3755.93	1047.87	3834.03	1.50	
12620.00	90.280	91.180	7184.42	3848.89	1044.15	3926.95	2.40	
12715.00	90.430	87.320	7183.83	3943.57	1045.39	4021.92	4.07	
12808.00	90.180	82.690	7183.33	4035.44	1053.49	4114.54	4.99	
12902.00	90.280	81.060	7182.96	4127.41	1066.77	4207.59	1.74	
12996.00	89.010	86.170	7183.54	4219.89	1077.22	4300.97	5.60	
13090.00	89.170	86.400	7185.03	4313.07	1083.31	4394.76	0.30	
13183.00	89.260	84.650	7186.31	4405.08	1090.57	4487.47	1.88	
13276.00	88.680	87.760	7187.98	4497.24	1096.72	4580.24	3.40	
13369.00	88.680	90.870	7190.12	4589.92	1097.83	4673.19	3.34	
13464.00	89.020	90.000	7192.03	4684.73	1097.11	4768.17	0.98	
13558.00	89.010	90.080	7193.64	4778.52	1097.05	4862.16	0.09	
13652.00	88.890	89.260	7195.37	4872.25	1097.59	4956.14	0.88	
13745.00	88.920	89.010	7197.14	4964.93	1098.99	5049.11	0.27	



Actual Wellpath Report

BEEBE 14C-26-M AWP

Page n of nn



REFERENCE WELLPATH IDENTIFICATION

Operator	SRC ENERGY	Slot	SLOT# 09 BEEBE 14C-26-M (402'FNL & 2275'FWL SEC.34)
Area	COLORADO	Well	BEEBE 14C-26-M
Field	WELD COUNTY (NAD83,TRUE NORTH)	Wellbore	BEEBE 14C-26-M AWB
Facility	SEC.34-T06N-R66W		

WELLPATH DATA (158 stations)

MD [ft]	Inclination [°]	Azimuth [°]	TVD [ft]	Vert Sect [ft]	North [ft]	East [ft]	DLS [°/100ft]	Comments
13839.00	88.430	88.490	7199.32	5058.53	1101.04	5143.06	0.76	
13932.00	87.510	87.720	7202.61	5151.01	1104.12	5235.95	1.29	
14026.00	87.480	86.740	7206.72	5244.30	1108.65	5329.75	1.04	
14120.00	86.640	87.260	7211.54	5337.52	1113.57	5423.50	1.05	
14213.00	86.360	90.850	7217.22	5430.01	1115.10	5516.30	3.86	
14305.00	85.440	89.740	7223.80	5521.60	1114.63	5608.06	1.56	
14389.00	85.010	86.670	7230.79	5604.90	1117.25	5691.72	3.68	LAST BHI MWD SURVEY (726' FSL & 2650' FWL)
14412.00	85.010	86.670	7232.79	5627.63	1118.58	5714.59	0.00	PROJECTION TO BIT (727' FSL & 2673' FWL)

HOLE & CASING SECTIONS - Ref Wellbore: BEEBE 14C-26-M AWB Ref Wellpath: BEEBE 14C-26-M AWP

String/Diameter	Start MD [ft]	End MD [ft]	Interval [ft]	Start TVD [ft]	End TVD [ft]	Start N/S [ft]	Start E/W [ft]	End N/S [ft]	End E/W [ft]
13.5in Open Hole	20.00	1728.00	1708.00	20.00	1702.09	0.00	0.00	116.16	-170.59
9.625in Casing Surface	20.00	1772.00	1752.00	20.00	1743.53	0.00	0.00	124.70	-182.69
8.5in Open Hole	1728.00	14412.00	12684.00	1702.09	7232.79	116.16	-170.59	1118.58	5714.59



Actual Wellpath Report

BEEBE 14C-26-M AWP

Page n of nn



REFERENCE WELLPATH IDENTIFICATION

Operator	SRC ENERGY	Slot	SLOT# 09 BEEBE 14C-26-M (402'FNL & 2275'FWL SEC.34)
Area	COLORADO	Well	BEEBE 14C-26-M
Field	WELD COUNTY (NAD83,TRUE NORTH)	Wellbore	BEEBE 14C-26-M AWB
Facility	SEC.34-T06N-R66W		

TARGETS

Name	TVD [ft]	North [ft]	East [ft]	Grid East [US ft]	Grid North [US ft]	Latitude	Longitude	Shape
SEC.26-T06N-R66W	15.00	160.00	1.16	3204488.23	1408175.60	40°27'05.465"N	104°45'54.763"W	polygon
SEC.27-T06N-R66W	15.00	160.00	1.16	3204488.23	1408175.60	40°27'05.465"N	104°45'54.763"W	polygon
BEEBE 14C-26-M TOP OF PROD REV-1 (752'FSL & 1401'FWL SEC.27)	7150.00	1157.12	-871.60	3203607.27	1409165.42	40°27'15.318"N	104°46'06.053"W	point
BEEBE 14C-26-M TOP OF PROD REV-2 (752'FSL&1401'FWL,SEC.27)	7153.60	1157.12	-871.60	3203607.27	1409165.42	40°27'15.318"N	104°46'06.053"W	point
BEEBE 14C-26-M BHL ON PLAT (727'FSL & 2672'FWL SEC.26)	7183.00	1118.10	5713.78	3210192.49	1409180.96	40°27'14.926"N	104°44'40.866"W	point
BEEBE 14C-26-M BHL REV-1 (627'FSL & 2672'FWL SEC.26)	7183.00	1018.06	5713.78	3210193.32	1409080.93	40°27'13.937"N	104°44'40.866"W	point
BEEBE 14C-26-M BHL ON PLAT REV-1 (727'FSL&2672'FWL,SEC26)	7212.79	1118.10	5713.78	3210192.49	1409180.96	40°27'14.926"N	104°44'40.866"W	point

WELLPATH COMPOSITION - Ref Wellbore: BEEBE 14C-26-M AWB Ref Wellpath: BEEBE 14C-26-M AWP

Start MD [ft]	End MD [ft]	Positional Uncertainty Model	Log Name/Comment	Wellbore
20.00	1728.00	Custom BHI NaviTrak (Standard Rotating+Axial Corr) (Rockies 0.03Gt model)	BHI NAVITRAK W/ EM 13.5" (STD ROTATING, AXIAL, ROCKIES GT)<108-1728>	BEEBE 14C-26-M AWB
1728.00	14389.00	Custom BHI AutoTrak Curve (IFR1, Short) (Rockies 0.03Gt model)	BHI ATC 8.5" (IFR, SHORT, ROCKIES GT)<1804-14389>	BEEBE 14C-26-M AWB
14389.00	14412.00	Blind Drilling (std)	Projection to bit	BEEBE 14C-26-M AWB



Actual Wellpath Report

BEEBE 14C-26-M AWP

Page n of nn



REFERENCE WELLPATH IDENTIFICATION

Operator	SRC ENERGY	Slot	SLOT# 09 BEEBE 14C-26-M (402'FNL & 2275'FWL SEC.34)
Area	COLORADO	Well	BEEBE 14C-26-M
Field	WELD COUNTY (NAD83,TRUE NORTH)	Wellbore	BEEBE 14C-26-M AWB
Facility	SEC.34-T06N-R66W		

WELLPATH COMMENTS

MD [ft]	Inclination [°]	Azimuth [°]	TVD [ft]	Comment
7856.00	89.020	90.090	7155.85	LANDING POINT (761' FSL & 1446' FWL)
14389.00	85.010	86.670	7230.79	LAST BHI MWD SURVEY (726' FSL & 2650' FWL)
14412.00	85.010	86.670	7232.79	PROJECTION TO BIT (727' FSL & 2673' FWL)