

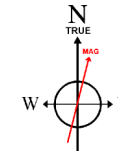
SRC ENERGY

Location: COLORADO Slot: SLOT# 08 BEEBE 14N-26B-M (382°FNL & 2275°FVL SEC.34)
 Field: WELD COUNTY (NAD83, TRUE NORTH) Well: BEEBE 14N-26B-M
 Facility: SEC.34-T06N-R66W Wellbore: BEEBE 14N-26B-M PWB

Plot reference wellpath is BEEBE 14N-26B-M REV-S.O PWP	Grid System: NAD83 / Lambert Colorado SP, Northern Zone (501), US feet
True vertical depths are referenced to PRECISION 462 (20) (RKB)	* - Wellpath was transformed from a different geodetic datum
Measured depths are referenced to PRECISION 462 (20) (RKB)	North Reference: True north
PRECISION 462 (20) (RKB) to Mean Sea Level: 4721 feet	Scale: True distance
Mean Sea Level to Mud line (At Slot: SLOT# 08 BEEBE 14N-26B-M (382°FNL & 2275°FVL SEC.34)): 0 feet	Depths are in feet
Coordinates are in feet referenced to Slot	Created by: cantryat on 2017-07-12
	Database: Denver

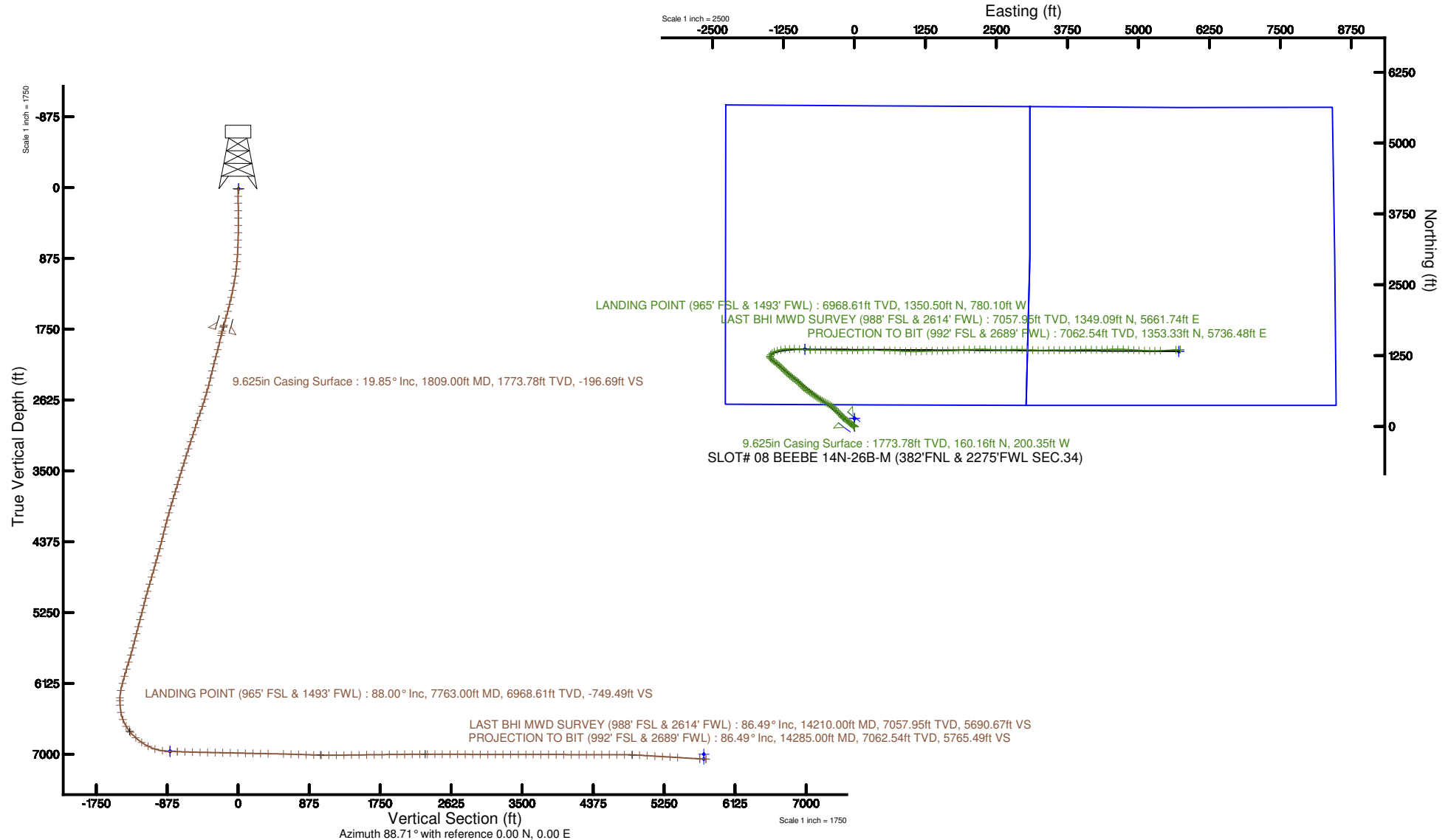


SRC ENERGY



BGGM (1900.0 to 2018.0) Dip: 66.91° Field: 52424.9 nT
 Magnetic North is 8.37 degrees East of True North (at 6/30/2017)

To correct azimuth from Magnetic to True add 8.37 degrees





Actual Wellpath Report

BEEBE 14N-26B-M AWP

Page n of nn



REFERENCE WELLPATH IDENTIFICATION

Operator	SRC ENERGY	Slot	SLOT# 08 BEEBE 14N-26B-M (382°FNL & 2275°FNL SEC.34)
Area	COLORADO	Well	BEEBE 14N-26B-M
Field	WELD COUNTY (NAD83,TRUE NORTH)	Wellbore	BEEBE 14N-26B-M AWB
Facility	SEC.34-T06N-R66W		

REPORT SETUP INFORMATION

Projection System	NAD83 / Lambert Colorado SP, Northern Zone (501), US feet	Software System	WellArchitect® 5.0
North Reference	True	User	Cantryat
Scale	0.999963	Report Generated	7/12/2017 at 12:04:43 PM
Convergence at slot	0.48° East	Database/Source file	Denver/BEEBE_14N-26B-M_AWP.xml

WELLPATH LOCATION

	Local coordinates		Grid coordinates		Geographic coordinates	
	North[ft]	East[ft]	Easting[US ft]	Northing[US ft]	Latitude	Longitude
Slot Location	-139.96	-1.16	3204488.23	1408035.64	40°27'04.082"N	104°45'54.778"W
Facility Reference Pt			3204488.23	1408175.60	40°27'05.465"N	104°45'54.763"W
Field Reference Pt			3171284.48	1426358.81	40°30'07.643"N	104°53'02.634"W

WELLPATH DATUM

Calculation method	Minimum curvature	PRECISION 462 (20') (RKB) to Facility Vertical Datum	4721.00ft
Horizontal Reference Pt	Slot	PRECISION 462 (20') (RKB) to Mean Sea Level	4721.00ft
Vertical Reference Pt	PRECISION 462 (20') (RKB)	PRECISION 462 (20') (RKB) to Mud Line at Slot (SLOT# 08 BEEBE 14N-26B-M (382°FNL & 2275°FNL SEC.34))	4721.00ft
MD Reference Pt	PRECISION 462 (20') (RKB)	Section Origin	N 0.00, E 0.00 ft
Field Vertical Reference	Mean Sea Level	Section Azimuth	88.71°



Actual Wellpath Report

BEEBE 14N-26B-M AWP

Page n of nn



REFERENCE WELLPATH IDENTIFICATION

Operator	SRC ENERGY	Slot	SLOT# 08 BEEBE 14N-26B-M (382'FNL & 2275'FWL SEC.34)
Area	COLORADO	Well	BEEBE 14N-26B-M
Field	WELD COUNTY (NAD83,TRUE NORTH)	Wellbore	BEEBE 14N-26B-M AWB
Facility	SEC.34-T06N-R66W		

WELLPATH DATA (155 stations) † = interpolated/extrapolated station

MD (ft)	Inclination (°)	Azimuth (°)	TVD (ft)	Vert Sect (ft)	North (ft)	East (ft)	DLS (°/100ft)	Comments
0.00†	0.000	56.840	0.00	0.00	0.00	0.00	0.00	
20.00	0.000	56.840	20.00	0.00	0.00	0.00	0.00	
108.00	0.000	8.390	108.00	0.00	0.00	0.00	0.00	
195.00	0.180	56.840	195.00	0.12	0.07	0.11	0.21	
287.00	0.030	67.270	287.00	0.26	0.16	0.26	0.16	
378.00	0.130	134.270	378.00	0.36	0.10	0.35	0.13	
468.00	0.160	116.850	468.00	0.54	-0.03	0.54	0.06	
558.00	0.300	315.420	558.00	0.49	0.08	0.49	0.51	
648.00	2.290	312.800	647.97	-0.97	1.47	-1.00	2.21	
738.00	3.720	317.170	737.85	-4.19	4.84	-4.30	1.61	
828.00	4.680	318.740	827.60	-8.49	9.74	-8.71	1.07	
918.00	6.100	306.040	917.21	-14.65	15.31	-15.00	2.05	
1008.00	8.380	301.320	1006.48	-23.98	21.53	-24.47	2.62	
1098.00	11.040	304.680	1095.19	-36.48	29.85	-37.16	3.02	
1188.00	12.960	307.970	1183.22	-51.27	40.96	-52.20	2.26	
1278.00	14.380	306.670	1270.67	-67.90	53.85	-69.13	1.61	
1368.00	16.410	307.480	1357.43	-86.62	68.26	-88.18	2.27	
1458.00	17.670	310.100	1443.48	-106.78	84.79	-108.72	1.64	
1548.00	19.280	309.600	1528.84	-128.26	103.06	-130.62	1.80	
1638.00	20.210	308.690	1613.55	-151.41	122.25	-154.20	1.09	
1728.00	20.800	309.130	1697.84	-175.49	142.05	-178.73	0.68	
1744.00	20.710	309.320	1712.81	-179.80	145.64	-183.12	0.70	
1836.00	19.500	311.700	1799.20	-203.38	166.16	-207.17	1.59	
1867.00	19.820	318.190	1828.40	-210.58	173.52	-214.54	7.12	
1959.00	20.340	320.520	1914.80	-230.60	197.49	-235.10	1.04	
2052.00	20.300	314.730	2002.03	-251.80	221.32	-256.84	2.16	
2145.00	20.420	310.890	2089.22	-275.02	243.30	-280.57	1.44	
2239.00	20.130	315.110	2177.40	-298.33	265.49	-304.38	1.59	
2333.00	20.170	317.750	2265.65	-320.11	288.95	-326.70	0.97	
2427.00	20.200	317.700	2353.88	-341.38	312.95	-348.52	0.04	



Actual Wellpath Report

BEEBE 14N-26B-M AWP

Page n of nn



REFERENCE WELLPATH IDENTIFICATION

Operator	SRC ENERGY	Slot	SLOT# 08 BEEBE 14N-26B-M (382'FNL & 2275'FWL SEC.34)
Area	COLORADO	Well	BEEBE 14N-26B-M
Field	WELD COUNTY (NAD83,TRUE NORTH)	Wellbore	BEEBE 14N-26B-M AWP
Facility	SEC.34-T06N-R66W		

WELLPATH DATA (155 stations)

MD (ft)	Inclination (°)	Azimuth (°)	TVD (ft)	Vert Sect (ft)	North (ft)	East (ft)	DLS (°/100ft)	Comments
2521.00	20.310	313.240	2442.07	-363.66	336.13	-371.32	1.65	
2614.00	20.270	308.580	2529.30	-387.53	357.23	-395.68	1.74	
2707.00	20.330	303.270	2616.53	-413.20	376.14	-421.78	1.98	
2800.00	20.520	295.850	2703.70	-441.02	392.11	-449.96	2.79	
2894.00	21.170	291.520	2791.55	-471.33	405.53	-480.58	1.78	
2988.00	20.910	300.320	2879.31	-501.27	420.22	-510.86	3.37	
3081.00	21.080	303.150	2966.14	-529.19	437.75	-539.19	1.11	
3175.00	20.940	301.040	3053.89	-557.33	455.65	-567.73	0.82	
3269.00	21.040	302.410	3141.65	-585.56	473.36	-596.37	0.53	
3361.00	21.030	302.540	3227.52	-613.01	491.09	-624.23	0.05	
3456.00	20.950	302.760	3316.22	-641.25	509.45	-652.88	0.12	
3550.00	20.960	304.360	3404.00	-668.83	528.03	-680.89	0.61	
3645.00	20.980	304.990	3492.71	-696.35	547.37	-708.85	0.24	
3739.00	20.050	304.930	3580.75	-722.91	566.25	-735.85	0.99	
3834.00	20.510	308.820	3669.86	-748.78	586.01	-762.17	1.50	
3928.00	20.440	304.530	3757.93	-774.69	605.64	-788.52	1.60	
4020.00	20.480	303.290	3844.13	-800.96	623.58	-815.21	0.47	
4112.00	20.500	305.850	3930.31	-827.06	641.84	-841.72	0.97	
4207.00	20.330	309.140	4019.34	-852.88	662.00	-868.01	1.22	
4302.00	20.180	313.420	4108.47	-877.09	683.69	-892.71	1.57	
4394.00	20.420	314.320	4194.76	-899.60	705.81	-915.72	0.43	
4488.00	20.390	316.120	4282.86	-922.15	729.07	-938.80	0.67	
4584.00	20.250	315.980	4372.89	-944.74	753.07	-961.94	0.15	
4678.00	20.330	312.300	4461.06	-967.61	775.76	-985.32	1.36	
4773.00	20.150	308.870	4550.19	-992.06	797.13	-1010.27	1.26	
4866.00	20.220	308.460	4637.48	-1016.66	817.18	-1035.32	0.17	
4959.00	20.200	308.130	4724.76	-1041.42	837.09	-1060.54	0.12	
5052.00	20.370	307.630	4811.99	-1066.42	856.89	-1085.99	0.26	
5146.00	20.390	307.320	4900.11	-1091.94	876.80	-1111.97	0.12	
5239.00	20.420	308.300	4987.27	-1117.11	896.68	-1137.58	0.37	



Actual Wellpath Report

BEEBE 14N-26B-M AWP

Page n of nn



REFERENCE WELLPATH IDENTIFICATION

Operator	SRC ENERGY	Slot	SLOT# 08 BEEBE 14N-26B-M (382'FNL & 2275'FWL SEC.34)
Area	COLORADO	Well	BEEBE 14N-26B-M
Field	WELD COUNTY (NAD83,TRUE NORTH)	Wellbore	BEEBE 14N-26B-M AWB
Facility	SEC.34-T06N-R66W		

WELLPATH DATA (155 stations)

MD [ft]	Inclination [°]	Azimuth [°]	TVD [ft]	Vert Sect [ft]	North [ft]	East [ft]	DLS [°/100ft]	Comments
5333.00	20.240	311.860	5075.42	-1141.61	917.69	-1162.56	1.33	
5426.00	20.170	316.160	5162.70	-1164.19	940.00	-1185.65	1.60	
5520.00	20.170	315.250	5250.94	-1186.29	963.19	-1208.28	0.33	
5612.00	20.140	312.090	5337.30	-1208.72	985.08	-1231.20	1.18	
5705.00	20.210	312.770	5424.60	-1231.90	1006.72	-1254.88	0.26	
5798.00	20.120	315.130	5511.90	-1254.47	1028.96	-1277.96	0.88	
5892.00	20.190	314.560	5600.14	-1276.91	1051.80	-1300.92	0.22	
5986.00	20.070	312.290	5688.40	-1299.89	1074.04	-1324.41	0.84	
6079.00	20.060	309.750	5775.76	-1323.48	1094.97	-1348.48	0.94	
6174.00	22.040	307.520	5864.42	-1349.67	1116.25	-1375.14	2.25	
6267.00	22.250	308.940	5950.56	-1376.70	1137.94	-1402.68	0.62	
6361.00	19.930	308.490	6038.25	-1402.61	1159.10	-1429.06	2.47	
6453.00	20.040	310.150	6124.72	-1426.47	1179.02	-1453.39	0.63	
6546.00	17.190	319.080	6212.86	-1447.19	1199.69	-1474.58	4.33	
6640.00	12.790	349.580	6303.78	-1457.73	1220.46	-1485.58	9.45	
6676.62	12.740	1.640	6339.50	-1458.16	1228.49	-1486.20	7.27	
6733.00	13.200	15.460	6394.45	-1455.99	1240.91	-1484.30	5.55	
6828.00	19.990	27.820	6485.47	-1444.95	1265.76	-1473.82	8.02	
6922.00	25.640	51.960	6572.27	-1420.76	1292.58	-1450.23	11.52	
7017.00	32.380	67.830	6655.42	-1380.42	1314.91	-1410.38	10.72	
7111.00	40.880	73.080	6730.81	-1327.17	1333.39	-1357.53	9.63	
7204.00	48.990	76.350	6796.60	-1263.47	1350.56	-1294.20	9.06	
7298.00	55.070	83.600	6854.45	-1190.32	1363.25	-1221.32	8.87	
7390.00	63.190	88.570	6901.64	-1111.53	1368.49	-1142.63	9.97	
7482.00	72.660	90.770	6936.18	-1026.39	1368.93	-1057.48	10.53	
7577.00	81.720	94.780	6957.23	-934.11	1364.39	-965.07	10.39	
7670.00	88.120	95.410	6965.46	-842.10	1356.16	-872.85	6.91	
7763.00	88.000	91.580	6968.61	-749.49	1350.50	-780.10	4.12	LANDING POINT (965' FSL & 1493' FWL)
7857.00	88.280	90.210	6971.66	-655.61	1349.03	-686.16	1.49	
7949.00	87.970	90.610	6974.67	-563.70	1348.37	-594.21	0.55	



Actual Wellpath Report

BEEBE 14N-26B-M AWP

Page n of nn



REFERENCE WELLPATH IDENTIFICATION

Operator	SRC ENERGY	Slot	SLOT# 08 BEEBE 14N-26B-M (382'FNL & 2275'FWL SEC.34)
Area	COLORADO	Well	BEEBE 14N-26B-M
Field	WELD COUNTY (NAD83,TRUE NORTH)	Wellbore	BEEBE 14N-26B-M AWP
Facility	SEC.34-T06N-R66W		

WELLPATH DATA (155 stations)

MD (ft)	Inclination (°)	Azimuth (°)	TVD (ft)	Vert Sect (ft)	North (ft)	East (ft)	DLS (°/100ft)	Comments
8042.00	89.140	90.820	6977.01	-470.79	1347.21	-501.25	1.28	
8135.00	88.710	91.440	6978.76	-377.89	1345.38	-408.28	0.81	
8228.00	89.110	91.300	6980.53	-285.01	1343.16	-315.33	0.46	
8322.00	88.920	90.850	6982.14	-191.10	1341.39	-221.36	0.52	
8415.00	88.950	89.830	6983.87	-98.16	1340.84	-128.38	1.10	
8508.00	88.550	88.470	6985.90	-5.19	1342.22	-35.41	1.52	
8602.00	88.490	89.720	6988.33	88.78	1343.70	58.54	1.33	
8695.00	88.800	89.490	6990.53	181.74	1344.35	151.51	0.42	
8790.00	89.010	89.920	6992.34	276.71	1344.83	246.50	0.50	
8882.00	88.830	90.030	6994.08	368.67	1344.87	338.48	0.23	
9071.00	88.710	90.730	6998.14	557.54	1343.62	527.43	0.38	
9165.00	88.370	92.150	7000.53	651.41	1341.26	621.37	1.55	
9259.00	88.180	92.820	7003.36	745.16	1337.19	715.24	0.74	
9351.00	88.250	93.870	7006.23	836.81	1331.82	807.03	1.14	
9444.00	88.180	92.830	7009.12	929.46	1326.39	899.83	1.12	
9538.00	88.280	91.190	7012.03	1023.26	1323.09	993.72	1.75	
9632.38	90.400	88.910	7013.11	1117.59	1323.01	1088.08	3.30	
9724.00	90.280	87.450	7012.57	1209.20	1325.92	1179.65	1.60	
9818.00	90.770	88.120	7011.71	1303.19	1329.55	1273.58	0.88	
9911.00	90.890	89.100	7010.36	1396.18	1331.81	1366.54	1.06	
10004.00	90.490	89.880	7009.24	1489.16	1332.64	1459.53	0.94	
10098.00	90.680	88.950	7008.28	1583.15	1333.60	1553.52	1.01	
10191.00	90.800	88.440	7007.08	1676.14	1335.72	1646.49	0.56	
10286.00	90.710	86.650	7005.83	1771.11	1339.78	1741.39	1.89	
10379.00	90.740	85.790	7004.65	1864.01	1345.91	1834.18	0.93	
10473.00	90.520	87.110	7003.62	1957.93	1351.73	1927.99	1.42	
10566.00	90.580	89.810	7002.73	2050.92	1354.23	2020.94	2.90	
10660.00	90.490	87.880	7001.85	2144.91	1356.13	2114.91	2.06	
10753.00	90.520	88.690	7001.03	2237.90	1358.91	2207.87	0.87	
10846.00	89.820	92.480	7000.75	2330.83	1357.96	2300.84	4.14	



Actual Wellpath Report

BEEBE 14N-26B-M AWP

Page n of nn



REFERENCE WELLPATH IDENTIFICATION

Operator	SRC ENERGY	Slot	SLOT# 08 BEEBE 14N-26B-M (382°FNL & 2275°FNL SEC.34)
Area	COLORADO	Well	BEEBE 14N-26B-M
Field	WELD COUNTY (NAD83,TRUE NORTH)	Wellbore	BEEBE 14N-26B-M AWP
Facility	SEC.34-T06N-R66W		

WELLPATH DATA (155 stations)

MD (ft)	Inclination (°)	Azimuth (°)	TVD (ft)	Vert Sect (ft)	North (ft)	East (ft)	DLS (°/100ft)	Comments
10939.00	89.970	92.600	7000.92	2423.63	1353.84	2393.75	0.21	
11032.00	89.720	90.950	7001.17	2516.49	1350.96	2486.70	1.79	
11126.00	89.850	89.560	7001.53	2610.45	1350.54	2580.70	1.49	
11220.00	89.750	89.390	7001.86	2704.44	1351.40	2674.70	0.21	
11313.00	89.780	88.580	7002.24	2797.44	1353.05	2767.68	0.87	
11406.00	89.750	89.220	7002.62	2890.44	1354.84	2860.66	0.69	
11499.00	89.750	90.570	7003.02	2983.42	1355.01	2953.66	1.45	
11593.00	89.850	93.050	7003.35	3077.27	1352.04	3047.60	2.64	
11687.00	89.720	92.930	7003.71	3171.01	1347.13	3141.48	0.19	
11780.00	89.820	91.460	7004.08	3263.83	1343.57	3234.40	1.58	
11874.00	89.850	89.150	7004.35	3357.79	1343.07	3328.40	2.46	
11968.00	90.030	89.260	7004.45	3451.78	1344.38	3422.39	0.22	
12061.00	89.850	89.480	7004.55	3544.78	1345.40	3515.38	0.31	
12154.00	89.820	90.350	7004.81	3637.76	1345.54	3608.38	0.94	
12247.00	89.910	89.880	7005.03	3730.73	1345.35	3701.38	0.51	
12342.00	89.970	88.140	7005.13	3825.72	1346.99	3796.36	1.83	
12435.00	89.940	87.840	7005.20	3918.72	1350.25	3889.30	0.32	
12529.00	89.880	88.690	7005.35	4012.71	1353.10	3983.26	0.91	
12622.00	89.940	90.460	7005.50	4105.70	1353.79	4076.25	1.90	
12717.00	89.910	91.000	7005.62	4200.64	1352.58	4171.24	0.57	
12809.00	90.060	90.160	7005.65	4292.59	1351.65	4263.24	0.93	
12903.00	89.970	88.530	7005.62	4386.58	1352.72	4357.23	1.74	
12998.00	90.090	88.270	7005.57	4481.58	1355.37	4452.19	0.30	
13092.00	89.850	88.350	7005.62	4575.58	1358.15	4546.15	0.27	
13185.00	89.660	90.070	7006.02	4668.57	1359.43	4639.14	1.86	
13278.00	89.660	92.120	7006.57	4761.48	1357.65	4732.11	2.20	
13371.00	87.880	93.440	7008.57	4854.22	1353.14	4824.98	2.38	
13465.00	86.550	93.220	7013.13	4947.80	1347.69	4918.71	1.43	
13559.00	86.620	93.310	7018.73	5041.34	1342.35	5012.39	0.12	
13653.00	86.580	91.940	7024.31	5134.95	1338.05	5106.12	1.46	



Actual Wellpath Report

BEEBE 14N-26B-M AWP

Page n of nn



REFERENCE WELLPATH IDENTIFICATION

Operator	SRC ENERGY	Slot	SLOT# 08 BEEBE 14N-26B-M (382'FNL & 2275'FWL SEC.34)
Area	COLORADO	Well	BEEBE 14N-26B-M
Field	WELD COUNTY (NAD83,TRUE NORTH)	Wellbore	BEEBE 14N-26B-M AWB
Facility	SEC.34-T06N-R66W		

WELLPATH DATA (155 stations)

MD [ft]	Inclination [°]	Azimuth [°]	TVD [ft]	Vert Sect [ft]	North [ft]	East [ft]	DLS [°/100ft]	Comments
13747.00	86.550	91.460	7029.94	5228.65	1335.26	5199.91	0.51	
13840.00	86.550	89.500	7035.54	5321.44	1334.49	5292.73	2.10	
13934.00	86.550	88.020	7041.20	5415.26	1336.52	5386.54	1.57	
14210.00	86.490	86.750	7057.95	5690.67	1349.09	5661.74	0.46	LAST BHI MWD SURVEY (988' FSL & 2614' FWL)
14285.00	86.490	86.750	7062.54	5765.49	1353.33	5736.48	0.00	PROJECTION TO BIT (992' FSL & 2689' FWL)

HOLE & CASING SECTIONS - Ref Wellbore: BEEBE 14N-26B-M AWB Ref Wellpath: BEEBE 14N-26B-M AWP

String/Diameter	Start MD [ft]	End MD [ft]	Interval [ft]	Start TVD [ft]	End TVD [ft]	Start N/S [ft]	Start E/W [ft]	End N/S [ft]	End E/W [ft]
13.5in Open Hole	20.00	1744.00	1724.00	20.00	1712.81	0.00	0.00	145.64	-183.12
9.625in Casing Surface	20.00	1809.00	1789.00	20.00	1773.78	0.00	0.00	160.16	-200.35
8.5in Open Hole	1744.00	14285.00	12541.00	1712.81	7062.54	145.64	-183.12	1353.33	5736.48



Actual Wellpath Report

BEEBE 14N-26B-M AWP

Page n of nn



REFERENCE WELLPATH IDENTIFICATION

Operator	SRC ENERGY	Slot	SLOT# 08 BEEBE 14N-26B-M (382°FNL & 2275°FNL SEC.34)
Area	COLORADO	Well	BEEBE 14N-26B-M
Field	WELD COUNTY (NAD83,TRUE NORTH)	Wellbore	BEEBE 14N-26B-M AWP
Facility	SEC.34-T06N-R66W		

TARGETS

Name	TVD [ft]	North [ft]	East [ft]	Grid East [US ft]	Grid North [US ft]	Latitude	Longitude	Shape
SEC.26-T06N-R66W	15.00	139.96	1.16	3204488.23	1408175.60	40°27'05.465"N	104°45'54.763"W	polygon
SEC.27-T06N-R66W	15.00	139.96	1.16	3204488.23	1408175.60	40°27'05.465"N	104°45'54.763"W	polygon
BEEBE 14N-26B-M TOP OF PROD (976°FSL & 1402°FNL SEC.27)	6961.00	1361.14	-870.76	3203606.25	1409389.46	40°27'17.532"N	104°46'06.042"W	point
BEEBE 14N-26B-M TOP OF PROD (976°FSL & 1402°FNL SEC.27) REV-2	6968.89	1361.14	-870.76	3203606.25	1409389.47	40°27'17.532"N	104°46'06.042"W	point
BEEBE 14N-26B-M BHL REV-1 (953°FSL & 2664°FNL SEC.26)	7000.00	1323.90	5711.50	3210188.34	1409406.76	40°27'17.158"N	104°44'40.895"W	point
BEEBE 14N-26B-M BHL REV-2 (953°FSL & 2664°FNL SEC.26)	7060.56	1323.89	5711.50	3210188.34	1409406.76	40°27'17.158"N	104°44'40.895"W	point

WELLPATH COMPOSITION - Ref Wellbore: BEEBE 14N-26B-M AWP Ref Wellpath: BEEBE 14N-26B-M AWP

Start MD [ft]	End MD [ft]	Positional Uncertainty Model	Log Name/Comment	We
20.00	1744.00	Custom BHI NaviTrak (Standard Rotating+Axial Corr) (Rockies 0.03Gt model)	BHI NAVITRAK W/ EM 13.5" (STD ROTATING, AXIAL, ROCKIES GT)<108-1744>	BEEBE 14
1744.00	14210.00	Custom BHI AutoTrak Curve (IFR1, Short) (Rockies 0.03Gt model)	CUSTOM BHI AUTOTRAK CURVE (IFR1, SHORT) (ROCKIES 0.03GT MODEL) <1836-14210>	BEEBE 14
14210.00	14285.00	Blind Drilling (std)	Projection to bit	BEEBE 14



Actual Wellpath Report

BEEBE 14N-26B-M AWP

Page n of nn



REFERENCE WELLPATH IDENTIFICATION

Operator	SRC ENERGY	Slot	SLOT# 08 BEEBE 14N-26B-M (382'FNL & 2275'FWL SEC.34)
Area	COLORADO	Well	BEEBE 14N-26B-M
Field	WELD COUNTY (NAD83,TRUE NORTH)	Wellbore	BEEBE 14N-26B-M AWB
Facility	SEC.34-T06N-R66W		

WELLPATH COMMENTS

MD [ft]	Inclination [°]	Azimuth [°]	TVD [ft]	Comment
7763.00	88.000	91.580	6968.61	LANDING POINT (965' FSL & 1493' FWL)
14210.00	86.490	86.750	7057.95	LAST BHI MWD SURVEY (988' FSL & 2614' FWL)
14285.00	86.490	86.750	7062.54	PROJECTION TO BIT (992' FSL & 2689' FWL)