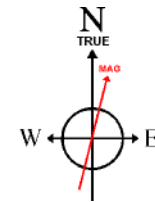
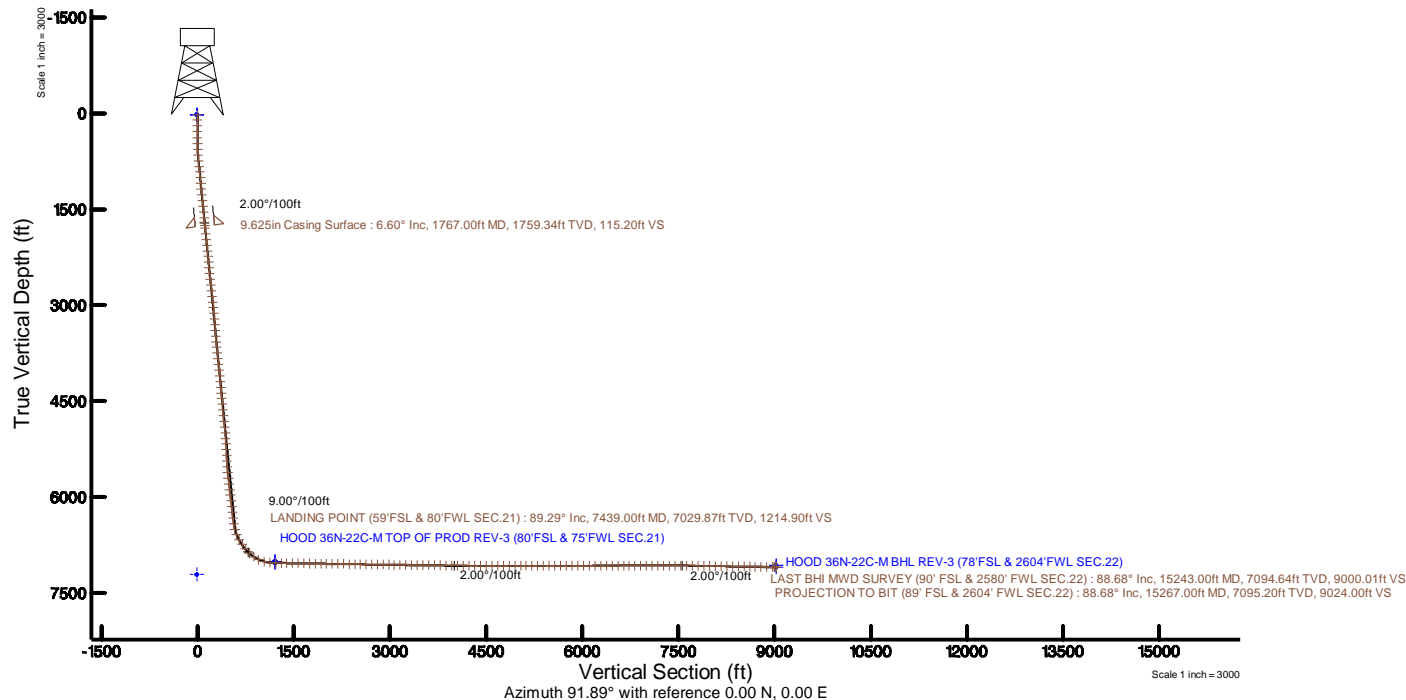
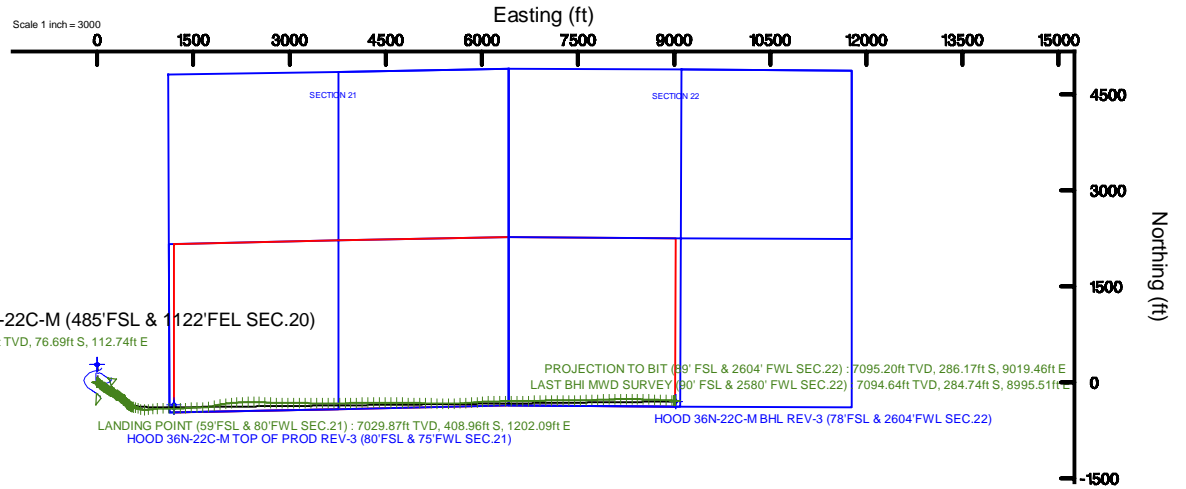


SRC ENERGY

Location: COLORADO Slot: SLOT#12 HOOD 36N-22C-M (485'FSL & 1122'FEL SEC.20)
 Field: WELD COUNTY (NAD83, TRUE NORTH) Well: HOOD 36N-22C-M
 Facility: SEC.20-T06N-R66W Wellbore: HOOD 36N-22C-M PWB

Plot reference wellpath is HOOD 36N-22C-M REV-C.0	Grid System: NAD83 / Lambert Colorado SP, Northern Zone (501), US feet
True vertical depths are referenced to PRECISION 562 (25) (RKB)	* = Wellpath was transformed from a different geodetic datum
Measured depths are referenced to PRECISION 562 (25) (RKB)	North Reference: True north
PRECISION 562 (25) (RKB) to Mean Sea Level: 4759 feet	Scale: True distance
Mean Sea Level to Mud line (At Slot: SLOT#12 HOOD 36N-22C-M (485'FSL & 1122'FEL SEC.20)): 0 feet	Depths are in feet
Coordinates are in feet referenced to Slot	Created by: wagner on 2017-06-30
	Database: WA_DEN_Denver_Defn



BGGM (1900.0 to 2018.0) Dip: 66.93° Field: 52494.8 nT
 Magnetic North is 8.42 degrees East of True North (at 3/27/2017)

To correct azimuth from Magnetic to True add 8.42 degrees



Actual Wellpath Report

HOOD 36N-22C-M AWP

Page 1 of 11



REFERENCE WELLPATH IDENTIFICATION

Operator	SRC ENERGY	Slot	SLOT#12 HOOD 36N-22C-M (485'FSL & 1122'FEL SEC.20)
Area	COLORADO	Well	HOOD 36N-22C-M
Field	WELD COUNTY (NAD83,TRUE NORTH)	Wellbore	HOOD 36N-22C-M AWB
Facility	SEC.20-T06N-R66W		

REPORT SETUP INFORMATION

Projection System	NAD83 / Lambert Colorado SP, Northern Zone (501), US feet	Software System	WellArchitect® 5.0
North Reference	True	User	Wagnjam
Scale	0.999964	Report Generated	6/30/2017 at 6:02:42 PM
Convergence at slot	0.46° East	Database/Source file	WA_DEN_Denver_Defn/HOOD_36N-22C-M_AWP.xml

WELLPATH LOCATION

	Local coordinates		Grid coordinates		Geographic coordinates	
	North[ft]	East[ft]	Easting[US ft]	Northing[US ft]	Latitude	Longitude
Slot Location	-280.22	0.54	3195756.28	1413998.97	40°28'03.709"N	104°47'47.116"W
Facility Reference Pt			3195753.51	1414279.17	40°28'06.478"N	104°47'47.123"W
Field Reference Pt			3171284.48	1426358.81	40°30'07.643"N	104°53'02.634"W

WELLPATH DATUM

Calculation method	Minimum curvature	PRECISION 562 (25') (RKB) to Facility Vertical Datum	4759.00ft
Horizontal Reference Pt	Slot	PRECISION 562 (25') (RKB) to Mean Sea Level	4759.00ft
Vertical Reference Pt	PRECISION 562 (25') (RKB)	PRECISION 562 (25') (RKB) to Mud Line at Slot (SLOT#12 HOOD 36N-22C-M (485'FSL & 1122'FEL SEC.20))	4759.00ft
MD Reference Pt	PRECISION 562 (25') (RKB)	Section Origin	N 0.00, E 0.00 ft
Field Vertical Reference	Mean Sea Level	Section Azimuth	91.89°



Actual Wellpath Report

HOOD 36N-22C-M AWP
Page 2 of 11



REFERENCE WELLPATH IDENTIFICATION

Operator	SRC ENERGY	Slot	SLOT#12 HOOD 36N-22C-M (485'FSL & 1122'FEL SEC.20)
Area	COLORADO	Well	HOOD 36N-22C-M
Field	WELD COUNTY (NAD83,TRUE NORTH)	Wellbore	HOOD 36N-22C-M AWB
Facility	SEC.20-T06N-R66W		

WELLPATH DATA (174 stations) † = interpolated/extrapolated station

MD [ft]	Inclination [°]	Azimuth [°]	TVD [ft]	Vert Sect [ft]	North [ft]	East [ft]	DLS [°/100ft]	Comments
0.00†	0.000	267.170	0.00	0.00	0.00	0.00	0.00	
25.00	0.000	267.170	25.00	0.00	0.00	0.00	0.00	
107.00	0.300	267.170	107.00	-0.21	-0.01	-0.21	0.37	
197.00	0.310	296.140	197.00	-0.67	0.09	-0.67	0.17	
289.00	0.470	134.960	289.00	-0.62	-0.07	-0.62	0.84	
381.00	0.920	136.840	380.99	0.18	-0.88	0.15	0.49	
471.00	1.110	125.650	470.98	1.41	-1.91	1.35	0.30	
561.00	1.810	103.850	560.95	3.53	-2.76	3.44	0.98	
651.00	3.570	112.000	650.84	7.55	-4.15	7.42	2.00	
741.00	6.430	112.410	740.49	14.90	-7.12	14.68	3.18	
831.00	8.150	120.400	829.76	25.23	-12.27	24.84	2.21	
921.00	7.780	133.580	918.90	35.38	-19.70	34.75	2.07	
1011.00	6.120	133.360	1008.24	43.53	-27.19	42.66	1.84	
1101.00	5.900	127.630	1097.75	50.88	-33.31	49.81	0.71	
1191.00	6.660	125.910	1187.20	58.96	-39.20	57.70	0.87	
1281.00	6.720	124.980	1276.59	67.69	-45.28	66.24	0.14	
1371.00	6.510	122.460	1365.99	76.50	-51.03	74.86	0.40	
1461.00	6.830	125.500	1455.38	85.35	-56.88	83.52	0.53	
1551.00	6.580	125.670	1544.77	94.09	-63.00	92.07	0.28	
1641.00	6.730	126.420	1634.16	102.72	-69.13	100.50	0.19	
1714.00	6.460	121.060	1706.68	109.83	-73.79	107.46	0.92	
1804.00	6.720	113.620	1796.09	119.14	-78.51	116.62	0.99	
1893.00	7.090	122.280	1884.44	128.72	-83.53	126.04	1.24	
1983.00	6.960	125.340	1973.77	138.06	-89.65	135.18	0.44	
2072.00	6.970	130.370	2062.11	146.78	-96.27	143.69	0.69	
2162.00	6.900	129.810	2151.45	155.32	-103.27	152.01	0.11	
2251.00	6.940	126.830	2239.81	163.95	-109.91	160.42	0.41	
2341.00	6.850	129.450	2329.15	172.66	-116.58	168.91	0.36	
2430.00	6.890	126.700	2417.52	181.25	-123.15	177.29	0.37	
2520.00	6.980	123.420	2506.86	190.34	-129.39	186.18	0.45	



Actual Wellpath Report

HOOD 36N-22C-M AWP
Page 3 of 11



REFERENCE WELLPATH IDENTIFICATION

Operator	SRC ENERGY	Slot	SLOT#12 HOOD 36N-22C-M (485'FSL & 1122'FEL SEC.20)
Area	COLORADO	Well	HOOD 36N-22C-M
Field	WELD COUNTY (NAD83,TRUE NORTH)	Wellbore	HOOD 36N-22C-M AWB
Facility	SEC.20-T06N-R66W		

WELLPATH DATA (174 stations)

MD [ft]	Inclination [°]	Azimuth [°]	TVD [ft]	Vert Sect [ft]	North [ft]	East [ft]	DLS [°/100ft]	Comments
2609.00	7.290	126.720	2595.17	199.59	-135.74	195.22	0.58	
2699.00	6.470	105.770	2684.53	209.20	-140.53	204.68	2.91	
2788.00	6.240	89.220	2772.99	218.90	-141.83	214.35	2.07	
2877.00	6.240	94.050	2861.47	228.56	-142.11	224.01	0.59	
2967.00	6.250	108.440	2950.94	238.15	-144.00	233.53	1.73	
3056.00	6.460	118.400	3039.40	247.27	-147.92	242.53	1.26	
3146.00	6.470	122.630	3128.82	256.16	-153.06	251.26	0.53	
3236.00	6.450	125.410	3218.25	264.73	-158.72	259.65	0.35	
3324.00	6.430	138.170	3305.70	272.26	-165.26	266.96	1.62	
3413.00	5.940	142.940	3394.18	278.60	-172.65	273.06	0.80	
3503.00	6.760	143.890	3483.63	284.79	-180.64	278.99	0.92	
3592.00	6.970	144.520	3571.99	291.29	-189.27	285.21	0.25	
3681.00	7.330	123.500	3660.32	299.40	-196.80	293.08	2.95	
3771.00	6.610	84.150	3749.70	309.43	-199.44	303.03	5.26	
3860.00	6.420	82.190	3838.12	319.41	-198.25	313.05	0.33	
3950.00	6.730	96.750	3927.54	329.63	-198.18	323.28	1.88	
4039.00	6.760	123.930	4015.95	339.26	-201.72	332.80	3.55	
4129.00	6.830	142.860	4105.32	347.12	-208.94	340.43	2.48	
4218.00	6.830	137.350	4193.69	354.17	-217.05	347.21	0.74	
4307.00	6.720	131.150	4282.07	361.91	-224.37	354.72	0.83	
4397.00	6.680	125.490	4371.46	370.35	-230.88	362.95	0.73	
4487.00	6.680	125.650	4460.85	379.06	-236.97	371.46	0.02	
4576.00	6.880	132.320	4549.23	387.42	-243.57	379.61	0.91	
4665.00	6.780	130.500	4637.60	395.58	-250.57	387.55	0.27	
4755.00	6.510	114.980	4727.00	404.43	-256.18	396.21	2.01	
4844.00	6.730	110.490	4815.41	414.01	-260.14	405.67	0.63	
4934.00	6.720	117.270	4904.79	423.77	-264.40	415.29	0.88	
5023.00	6.710	135.290	4993.19	432.25	-270.48	423.58	2.36	
5113.00	6.550	141.790	5082.59	439.38	-278.25	430.45	0.85	
5202.00	6.610	157.160	5171.01	444.79	-286.96	435.58	1.97	



Actual Wellpath Report

HOOD 36N-22C-M AWP

Page 4 of 11



REFERENCE WELLPATH IDENTIFICATION

Operator	SRC ENERGY	Slot	SLOT#12 HOOD 36N-22C-M (485'FSL & 1122'FEL SEC.20)
Area	COLORADO	Well	HOOD 36N-22C-M
Field	WELD COUNTY (NAD83,TRUE NORTH)	Wellbore	HOOD 36N-22C-M AWB
Facility	SEC.20-T06N-R66W		

WELLPATH DATA (174 stations)

MD [ft]	Inclination [°]	Azimuth [°]	TVD [ft]	Vert Sect [ft]	North [ft]	East [ft]	DLS [°/100ft]	Comments
5292.00	6.640	161.730	5260.41	448.75	-296.67	439.22	0.59	
5381.00	6.850	154.920	5348.79	452.93	-306.37	443.09	0.93	
5471.00	6.640	148.290	5438.17	458.24	-315.65	448.10	0.90	
5560.00	7.050	149.210	5526.54	464.04	-324.72	453.60	0.48	
5650.00	6.940	129.130	5615.88	471.35	-332.90	460.64	2.71	
5739.00	7.550	119.720	5704.17	480.80	-339.19	469.89	1.50	
5829.00	7.690	130.850	5793.38	490.71	-346.06	479.58	1.64	
5918.00	7.720	129.960	5881.58	500.05	-353.80	488.67	0.14	
6008.00	7.810	116.980	5970.76	510.35	-360.45	498.75	1.95	
6097.00	7.620	108.550	6058.96	521.48	-365.07	509.73	1.29	
6187.00	7.400	120.890	6148.19	532.26	-369.95	520.37	1.81	
6276.00	7.340	117.980	6236.46	542.38	-375.56	530.31	0.42	
6366.00	6.720	121.400	6325.78	552.13	-381.00	539.88	0.83	
6456.00	7.710	106.430	6415.07	562.55	-385.45	550.16	2.35	
6545.00	15.860	95.940	6502.13	580.50	-388.40	568.02	9.43	
6634.00	23.240	102.490	6585.95	609.93	-393.47	597.30	8.64	
6723.00	29.570	108.920	6665.65	648.23	-404.40	635.26	7.79	
6813.00	36.750	107.670	6740.94	695.44	-419.79	681.99	8.01	
6902.00	38.860	91.140	6811.44	749.12	-428.45	735.42	11.60	
6992.00	45.320	81.320	6878.26	808.94	-424.18	795.40	10.23	
7081.00	55.530	82.670	6934.89	876.43	-414.69	863.25	11.53	
7171.00	65.500	87.120	6979.15	954.09	-407.88	941.17	11.88	
7260.00	75.020	89.900	7009.18	1037.61	-405.77	1024.81	11.09	
7350.00	84.570	91.880	7025.11	1126.06	-407.17	1113.27	10.83	
7439.00	89.290	90.430	7029.87	1214.90	-408.96	1202.09	5.55	LANDING POINT (59'FSL & 80'FWL SEC.21)
7529.00	89.320	87.250	7030.97	1304.76	-407.13	1292.06	3.53	
7618.00	89.140	85.000	7032.16	1393.29	-401.12	1380.84	2.54	
7708.00	89.380	85.710	7033.33	1482.70	-393.83	1470.53	0.83	
7797.00	89.010	89.900	7034.58	1571.45	-390.42	1559.44	4.73	
7887.00	89.140	89.290	7036.03	1661.36	-389.79	1649.43	0.69	



Actual Wellpath Report

HOOD 36N-22C-M AWP

Page 5 of 11



REFERENCE WELLPATH IDENTIFICATION

Operator	SRC ENERGY	Slot	SLOT#12 HOOD 36N-22C-M (485'FSL & 1122'FEL SEC.20)
Area	COLORADO	Well	HOOD 36N-22C-M
Field	WELD COUNTY (NAD83,TRUE NORTH)	Wellbore	HOOD 36N-22C-M AWB
Facility	SEC.20-T06N-R66W		

WELLPATH DATA (174 stations)

MD [ft]	Inclination [°]	Azimuth [°]	TVD [ft]	Vert Sect [ft]	North [ft]	East [ft]	DLS [°/100ft]	Comments
7976.00	89.080	82.580	7037.41	1749.82	-383.48	1738.14	7.54	
8066.00	89.010	74.370	7038.92	1837.28	-365.52	1826.24	9.12	
8156.00	88.890	79.200	7040.57	1924.13	-344.96	1913.81	5.37	
8245.00	89.140	83.640	7042.10	2011.62	-331.68	2001.78	5.00	
8335.00	89.170	83.890	7043.42	2100.70	-321.91	2091.24	0.28	
8424.00	89.290	86.030	7044.62	2189.04	-314.09	2179.88	2.41	
8513.00	89.140	88.320	7045.84	2277.73	-309.71	2268.76	2.58	
8603.00	87.840	88.820	7048.21	2367.54	-307.46	2358.70	1.55	
8693.00	89.200	89.290	7050.54	2457.40	-305.98	2448.66	1.60	
8771.00	89.140	91.890	7051.67	2535.37	-306.78	2526.64	3.33	
8860.00	89.380	94.190	7052.82	2624.33	-311.50	2615.50	2.60	
8950.00	89.290	93.680	7053.86	2714.27	-317.67	2705.28	0.58	
9039.00	89.320	91.300	7054.94	2803.25	-321.54	2794.18	2.67	
9129.00	89.110	90.400	7056.17	2893.23	-322.88	2884.16	1.03	
9218.00	89.200	89.540	7057.49	2982.17	-322.83	2973.15	0.97	
9307.00	89.260	90.100	7058.68	3071.10	-322.55	3062.14	0.63	
9397.00	89.260	89.940	7059.84	3161.05	-322.58	3152.14	0.18	
9486.00	89.110	90.230	7061.11	3249.99	-322.71	3241.13	0.37	
9576.00	89.350	90.770	7062.32	3339.96	-323.50	3331.11	0.66	
9666.00	89.230	90.100	7063.43	3429.92	-324.18	3421.10	0.76	
9755.00	89.170	90.800	7064.68	3518.88	-324.88	3510.09	0.79	
9844.00	89.970	90.030	7065.34	3607.85	-325.53	3599.09	1.25	
9934.00	89.140	90.310	7066.04	3697.81	-325.79	3689.08	0.97	
10023.00	89.260	89.620	7067.29	3786.75	-325.74	3778.07	0.79	
10113.00	89.200	88.980	7068.50	3876.65	-324.64	3868.06	0.71	
10202.00	89.290	88.050	7069.67	3965.49	-322.33	3957.02	1.05	
10292.00	89.480	87.830	7070.63	4055.27	-319.10	4046.96	0.32	
10381.00	89.450	89.090	7071.47	4144.10	-316.71	4135.92	1.42	
10471.00	89.540	89.540	7072.26	4234.01	-315.63	4225.91	0.51	
10560.00	89.380	90.210	7073.10	4322.95	-315.44	4314.90	0.77	



Actual Wellpath Report

HOOD 36N-22C-M AWP

Page 6 of 11



REFERENCE WELLPATH IDENTIFICATION

Operator	SRC ENERGY	Slot	SLOT#12 HOOD 36N-22C-M (485'FSL & 1122'FEL SEC.20)
Area	COLORADO	Well	HOOD 36N-22C-M
Field	WELD COUNTY (NAD83,TRUE NORTH)	Wellbore	HOOD 36N-22C-M AWB
Facility	SEC.20-T06N-R66W		

WELLPATH DATA (174 stations)

MD [ft]	Inclination [°]	Azimuth [°]	TVD [ft]	Vert Sect [ft]	North [ft]	East [ft]	DLS [°/100ft]	Comments
10650.00	89.420	90.850	7074.04	4412.92	-316.27	4404.89	0.71	
10739.00	90.180	90.450	7074.35	4501.90	-317.28	4493.89	0.96	
10829.00	90.120	89.930	7074.12	4591.86	-317.58	4583.89	0.58	
10918.00	90.120	89.830	7073.93	4680.80	-317.39	4672.89	0.11	
11007.00	90.180	90.580	7073.70	4769.76	-317.71	4761.88	0.85	
11097.00	90.220	90.900	7073.38	4859.74	-318.87	4851.88	0.36	
11186.00	89.850	91.050	7073.33	4948.73	-320.38	4940.86	0.45	
11276.00	90.060	91.500	7073.40	5038.73	-322.39	5030.84	0.55	
11365.00	90.030	91.480	7073.33	5127.72	-324.70	5119.81	0.04	
11455.00	89.880	91.780	7073.40	5217.72	-327.26	5209.77	0.37	
11544.00	90.060	91.030	7073.45	5306.72	-329.44	5298.75	0.87	
11634.00	89.820	89.780	7073.54	5396.69	-330.08	5388.74	1.41	
11723.00	89.970	89.890	7073.70	5485.63	-329.82	5477.74	0.21	
11813.00	89.910	89.080	7073.80	5575.55	-329.01	5567.74	0.90	
11902.00	90.250	87.620	7073.67	5664.38	-326.45	5656.70	1.68	
11992.00	90.180	86.250	7073.34	5754.04	-321.64	5746.57	1.52	
12081.00	90.060	86.150	7073.15	5842.60	-315.74	5835.37	0.18	
12171.00	90.090	85.490	7073.03	5932.10	-309.18	5925.13	0.73	
12260.00	90.060	85.980	7072.91	6020.58	-302.56	6013.88	0.55	
12350.00	90.150	87.130	7072.75	6110.19	-297.15	6103.72	1.28	
12439.00	90.120	89.040	7072.54	6198.99	-294.18	6192.66	2.15	
12529.00	90.090	89.590	7072.37	6288.90	-293.10	6282.66	0.61	
12618.00	90.090	89.270	7072.24	6377.82	-292.22	6371.65	0.36	
12708.00	90.060	89.590	7072.12	6467.74	-291.32	6461.65	0.36	
12797.00	90.000	89.580	7072.07	6556.66	-290.68	6550.65	0.07	
12887.00	90.180	89.460	7071.93	6646.59	-289.93	6640.64	0.24	
12976.00	89.910	89.320	7071.86	6735.50	-288.98	6729.64	0.34	
13066.00	90.090	88.640	7071.86	6825.39	-287.38	6819.62	0.78	
13155.00	89.910	88.370	7071.86	6914.23	-285.05	6908.59	0.36	
13245.00	90.180	88.980	7071.79	7004.09	-282.97	6998.57	0.74	



Actual Wellpath Report

HOOD 36N-22C-M AWP

Page 7 of 11



REFERENCE WELLPATH IDENTIFICATION

Operator	SRC ENERGY	Slot	SLOT#12 HOOD 36N-22C-M (485'FSL & 1122'FEL SEC.20)
Area	COLORADO	Well	HOOD 36N-22C-M
Field	WELD COUNTY (NAD83,TRUE NORTH)	Wellbore	HOOD 36N-22C-M AWB
Facility	SEC.20-T06N-R66W		

WELLPATH DATA (174 stations)

MD [ft]	Inclination [°]	Azimuth [°]	TVD [ft]	Vert Sect [ft]	North [ft]	East [ft]	DLS [°/100ft]	Comments
13334.00	90.180	89.470	7071.51	7092.99	-281.77	7087.56	0.55	
13424.00	90.120	89.460	7071.27	7182.91	-280.93	7177.55	0.07	
13513.00	89.910	89.320	7071.25	7271.83	-279.98	7266.55	0.28	
13602.00	90.060	90.230	7071.27	7360.77	-279.63	7355.55	1.04	
13692.00	90.460	89.760	7070.87	7450.72	-279.62	7445.55	0.69	
13781.00	90.030	89.340	7070.48	7539.64	-278.92	7534.54	0.68	
13871.00	90.120	89.280	7070.37	7629.55	-277.84	7624.54	0.12	
13961.00	88.860	88.120	7071.17	7719.40	-275.80	7714.51	1.90	
14050.00	88.860	86.810	7072.94	7808.12	-271.86	7803.40	1.47	
14140.00	88.860	87.850	7074.73	7897.82	-267.67	7893.28	1.16	
14230.00	88.980	88.540	7076.43	7987.61	-264.84	7983.22	0.78	
14319.00	88.980	88.750	7078.01	8076.46	-262.73	8072.18	0.24	
14409.00	89.170	89.540	7079.46	8166.34	-261.39	8162.16	0.90	
14498.00	88.950	90.530	7080.92	8255.28	-261.45	8251.15	1.14	
14588.00	89.010	90.000	7082.53	8345.23	-261.86	8341.13	0.59	
14677.00	88.950	90.600	7084.11	8434.18	-262.33	8430.12	0.68	
14767.00	88.980	90.940	7085.74	8524.15	-263.54	8520.09	0.38	
14856.00	89.140	92.490	7087.20	8613.13	-266.20	8609.04	1.75	
14945.00	88.920	92.350	7088.70	8702.12	-269.96	8697.95	0.29	
15035.00	88.710	92.620	7090.56	8792.09	-273.86	8787.84	0.38	
15124.00	89.080	92.800	7092.28	8881.07	-278.07	8876.73	0.46	
15214.00	88.740	93.490	7093.99	8971.03	-283.00	8966.57	0.85	
15243.00	88.680	93.400	7094.64	9000.01	-284.74	8995.51	0.37	LAST BHI MWD SURVEY (90' FSL & 2580' FWL SEC.22)
15267.00	88.680	93.400	7095.20	9024.00	-286.17	9019.46	0.00	PROJECTION TO BIT (89' FSL & 2604' FWL SEC.22)



Actual Wellpath Report

HOOD 36N-22C-M AWP
Page 8 of 11



REFERENCE WELLPATH IDENTIFICATION

Operator	SRC ENERGY	Slot	SLOT#12 HOOD 36N-22C-M (485'FSL & 1122'FEL SEC.20)
Area	COLORADO	Well	HOOD 36N-22C-M
Field	WELD COUNTY (NAD83,TRUE NORTH)	Wellbore	HOOD 36N-22C-M AWB
Facility	SEC.20-T06N-R66W		

HOLE & CASING SECTIONS - Ref Wellbore: HOOD 36N-22C-M AWB Ref Wellpath: HOOD 36N-22C-M AWP

String/Diameter	Start MD [ft]	End MD [ft]	Interval [ft]	Start TVD [ft]	End TVD [ft]	Start N/S [ft]	Start E/W [ft]	End N/S [ft]	End E/W [ft]
13.5in Open Hole	25.00	1755.00	1730.00	25.00	1747.42	0.00	0.00	-76.07	111.51
9.625in Casing Surface	25.00	1767.00	1742.00	25.00	1759.34	0.00	0.00	-76.69	112.74
8.5in Open Hole	1755.00	15267.00	13512.00	1747.42	7095.20	-76.07	111.51	-286.17	9019.46



Actual Wellpath Report

HOOD 36N-22C-M AWP

Page 9 of 11



REFERENCE WELLPATH IDENTIFICATION

Operator	SRC ENERGY	Slot	SLOT#12 HOOD 36N-22C-M (485'FSL & 1122'FEL SEC.20)
Area	COLORADO	Well	HOOD 36N-22C-M
Field	WELD COUNTY (NAD83,TRUE NORTH)	Wellbore	HOOD 36N-22C-M AWB
Facility	SEC.20-T06N-R66W		

TARGETS

Name	TVD [ft]	North [ft]	East [ft]	Grid East [US ft]	Grid North [US ft]	Latitude	Longitude	Shape
SEC.21-T06N-R66W	21.00	280.22	-0.54	3195753.51	1414279.17	40°28'06.478"N	104°47'47.123"W	polygon
SEC.21-T06N-R66W 1/4 LINES	21.00	280.22	-0.54	3195753.51	1414279.17	40°28'06.478"N	104°47'47.123"W	polygon
SEC.22-T06N-R66W	21.00	280.22	-0.54	3195753.51	1414279.17	40°28'06.478"N	104°47'47.123"W	polygon
SEC.22-T06N-R66W 1/4 LINES	21.00	280.22	-0.54	3195753.51	1414279.17	40°28'06.478"N	104°47'47.123"W	polygon
HOOD 36N-22C-M TOP OF PROD ON PLAT (120'FSL & 75'FWL SEC.21)	7004.00	-348.20	1197.08	3196956.03	1413660.30	40°28'00.268"N	104°47'31.628"W	point
HOOD 36N-22C-M TOP OF PROD REV-1 (80'FSL & 75'FWL SEC.21)	7004.00	-388.24	1197.05	3196956.32	1413620.25	40°27'59.872"N	104°47'31.628"W	point
HOOD 36N-22C-M TOP OF PROD REV-2 (80'FSL & 75'FWL SEC.21)	7004.23	-388.24	1197.05	3196956.32	1413620.25	40°27'59.872"N	104°47'31.628"W	point
HOOD 36N-22C-M TOP OF PROD REV-3 (80'FSL & 75'FWL SEC.21)	7029.23	-388.24	1197.05	3196956.32	1413620.25	40°27'59.872"N	104°47'31.628"W	point
HOOD 36N-22C-M BHL REV-1 (78'FSL & 2604'FWL SEC.22)	7066.00	-297.07	9019.94	3204777.94	1413773.48	40°28'00.757"N	104°45'50.414"W	point
HOOD 36N-22C-M BHL REV-2 (78'FSL & 2604'FWL SEC.22)	7070.74	-297.07	9019.94	3204777.94	1413773.48	40°28'00.757"N	104°45'50.414"W	point
HOOD 36N-22C-M BHL REV-3 (78'FSL & 2604'FWL SEC.22)	7095.74	-297.07	9019.94	3204777.94	1413773.48	40°28'00.757"N	104°45'50.414"W	point
SEC.21&22-T06N-R66W 75' SOUTHERN SETBACKS	7209.00	280.22	-0.54	3195753.51	1414279.17	40°28'06.478"N	104°47'47.123"W	polygon



Actual Wellpath Report

HOOD 36N-22C-M AWP

Page 10 of 11



REFERENCE WELLPATH IDENTIFICATION

Operator	SRC ENERGY	Slot	SLOT#12 HOOD 36N-22C-M (485'FSL & 1122'FEL SEC.20)
Area	COLORADO	Well	HOOD 36N-22C-M
Field	WELD COUNTY (NAD83,TRUE NORTH)	Wellbore	HOOD 36N-22C-M AWB
Facility	SEC.20-T06N-R66W		

WELLPATH COMPOSITION - Ref Wellbore: HOOD 36N-22C-M AWB Ref Wellpath: HOOD 36N-22C-M AWP

Start MD [ft]	End MD [ft]	Positional Uncertainty Model	Log Name/Comment	Wellbore
25.00	1714.00	Custom BHI NaviTrak (Standard Rotating+Axial Corr) (Rockies 0.03Gt model)	BHI NAVITRAK 13.5" (STD ROTATING, AXIAL, ROCKIES GT)<107-1714>	HOOD 36N-22C-M AWB
1714.00	15243.00	Custom BHI AutoTrak Curve (IFR1, Short) (Rockies 0.03Gt model)	BHI ATC 8.5" (IFR, SHORT, ROCKIES GT)<1804-15243>	HOOD 36N-22C-M AWB
15243.00	15267.00	Blind Drilling (std)	Projection to bit	HOOD 36N-22C-M AWB



Actual Wellpath Report

HOOD 36N-22C-M AWP

Page 11 of 11



REFERENCE WELLPATH IDENTIFICATION			
Operator	SRC ENERGY	Slot	SLOT#12 HOOD 36N-22C-M (485'FSL & 1122'FEL SEC.20)
Area	COLORADO	Well	HOOD 36N-22C-M
Field	WELD COUNTY (NAD83,TRUE NORTH)	Wellbore	HOOD 36N-22C-M AWB
Facility	SEC.20-T06N-R66W		

WELLPATH COMMENTS				
MD [ft]	Inclination [°]	Azimuth [°]	TVD [ft]	Comment
7439.00	89.290	90.430	7029.87	LANDING POINT (59'FSL & 80'FWL SEC.21)
15243.00	88.680	93.400	7094.64	LAST BHI MWD SURVEY (90' FSL & 2580' FWL SEC.22)
15267.00	88.680	93.400	7095.20	PROJECTION TO BIT (89' FSL & 2604' FWL SEC.22)