

HALLIBURTON

iCem[®] Service

SYNERGY RESOURCES CORP-EBUS

Date: Sunday, June 18, 2017

Hood 25C-22-M Production

Job Date: Sunday, May 28, 2017

Sincerely,

Bryce Hinsch

Legal Notice

Disclaimer:

All information in this report is provided subject to the terms and conditions which govern the services provided by Halliburton. Halliburton personnel use their best efforts in gathering information and their best judgment in interpreting it, but any interpretation, research, analysis or recommendation furnished by Halliburton are opinions based upon inferences from measurements and empirical relationships and assumptions, which inferences and empirical relationships and assumptions are not infallible, and with respect to which professionals in the industry may differ. Accordingly, HALLIBURTON IS UNABLE TO GUARANTEE THE ACCURACY OF ANY CHART INTERPRETATION, RESEARCH ANALYSIS, OR JOB RECOMMENDATION and any interpretation or recommendation is not for use of or reliance upon by any third party. The customer has full responsibility for any of its decisions which are based on the information provided in this report.

Table of Contents

1.0	Cementing Job Summary	4
1.1	Executive Summary	4
2.0	Real-Time Job Summary	7
2.1	Job Event Log	7
3.0	Attachments.....	10
3.1	Synergy Hood 25C-22-M Production Job Chart.....	10

1.0 Cementing Job Summary

1.1 Executive Summary

Halliburton appreciates the opportunity to perform the cementing services on the **Hood 25C-22-M** cement **production** casing job. A pre-job safety meeting was held before the job where details of the job were discussed, potential safety hazards were reviewed, and environmental compliance procedures were outlined.

Approximately 21 bbls of cement were returned to surface.

Halliburton maintains a continuous quality improvement process and appreciates any comments or suggestions that you may have. Halliburton again thanks you for the opportunity to perform service work on this well. We hope to be your solutions provider for future projects.

Respectfully,

Halliburton [Ft. Lupton]

Sold To #: 359915	Ship To #: 3786158	Quote #:	Sales Order #: 0904057805
Customer: SYNERGY RESOURCES CORPORATION		Customer Rep: Kevin Brackovich	
Well Name: HOOD	Well #: 25C-22-M	API/UWI #: 05-123-44372-00	
Field: WATTENBERG	City (SAP): GREELEY	County/Parish: WELD	State: COLORADO
Legal Description: SE SE-20-6N-66W-745FSL-1122FEL			
Contractor: Precision		Rig/Platform Name/Num: Precision 562	
Job BOM: 7523 7523			
Well Type: HORIZONTAL OIL			
Sales Person: HALAMERICA\HB41307		Srcv Supervisor: Brad Hinkle	
Job			

Formation Name			
Formation Depth (MD)	Top		Bottom
Form Type	BHST		
Job depth MD	15597ft	Job Depth TVD	7180ft
Water Depth		Wk Ht Above Floor	
Perforation Depth (MD)	From		To

Well Data										
Description	New / Used	Size in	ID in	Weight lbm/ft	Thread	Grade	Top MD ft	Bottom MD ft	Top TVD ft	Bottom TVD ft
Casing		9.625	8.921	36	LTC	J-55	0	1763	0	1763
Casing		5.5	4.778	20		P-110	0	15584	0	7192
Open Hole Section			8.5				1763	15584	1763	7192

Tools and Accessories									
Type	Size in	Qty	Make	Depth ft		Type	Size in	Qty	Make
Guide Shoe	5.5					Top Plug	5.5	1	
Float Shoe	5.5	1		15597		Bottom Plug	5.5	1	
Float Collar	5.5	1		15552		SSR plug set	5.5		HES
Insert Float	5.5					Plug Container	5.5	1	HES
Wet Shoe Sub	5.5	1		15499		Centralizers	5.5		HES

Fluid Data										
Stage/Plug #: 1										
Fluid #	Stage Type	Fluid Name	Qty	Qty UoM	Mixing Density lbm/gal	Yield ft3/sack	Mix Fluid Gal	Rate bbl/min	Total Mix Fluid Gal	
1	Spacer	Tuned Spacer III	40	bbl	11.5	3.75		4		
Fluid #	Stage Type	Fluid Name	Qty	Qty UoM	Mixing Density lbm/gal	Yield ft3/sack	Mix Fluid Gal	Rate bbl/min	Total Mix Fluid Gal	

2	Lead Cement	ELASTICEM	1055	sack	13.2	1.57		8	7.52
Fluid #	Stage Type	Fluid Name	Qty	Qty UoM	Mixing Density lbm/gal	Yield ft3/sack	Mix Fluid Gal	Rate bbl/min	Total Mix Fluid Gal
3	Tail Cement	NeoCem	990	sack	13.2	2.09		8	10.08
Fluid #	Stage Type	Fluid Name	Qty	Qty UoM	Mixing Density lbm/gal	Yield ft3/sack	Mix Fluid Gal	Rate bbl/min	Total Mix Fluid Gal
4	MMCR Displacement	MMCR Displacement	20	bbl	8.34			10	
Fluid #	Stage Type	Fluid Name	Qty	Qty UoM	Mixing Density lbm/gal	Yield ft3/sack	Mix Fluid Gal	Rate bbl/min	Total Mix Fluid Gal
5	Displacement	Cla Web and Biocide Displcaement	323	bbl	8.33			8.5	
Cement Left In Pipe									
Amount	0 ft		Reason				Wet Shoe by Design		
Mix Water:	pH 6	Mix Water Chloride:	0 ppm			Mix Water Temperature:	62 °F		
Cement Temperature:	72 °F	Plug Displaced by:	## lb/gal kg/m3 XXXX			Disp. Temperature:	## °F °C		
Plug Bumped?	Yes	Bump Pressure:	2200 psi			Floats Held?	Yes		
Cement Returns:	21 bbl	Returns Density:	## lb/gal kg/m3			Returns Temperature:	## °F °C		
Comment 40 bbls Tuned Spacer and 21 bbls cement to surface with 6 bbl wet shoe accounted for. Estimated top of tail cement at 6419 feet.									

2.0 Real-Time Job Summary

2.1 Job Event Log

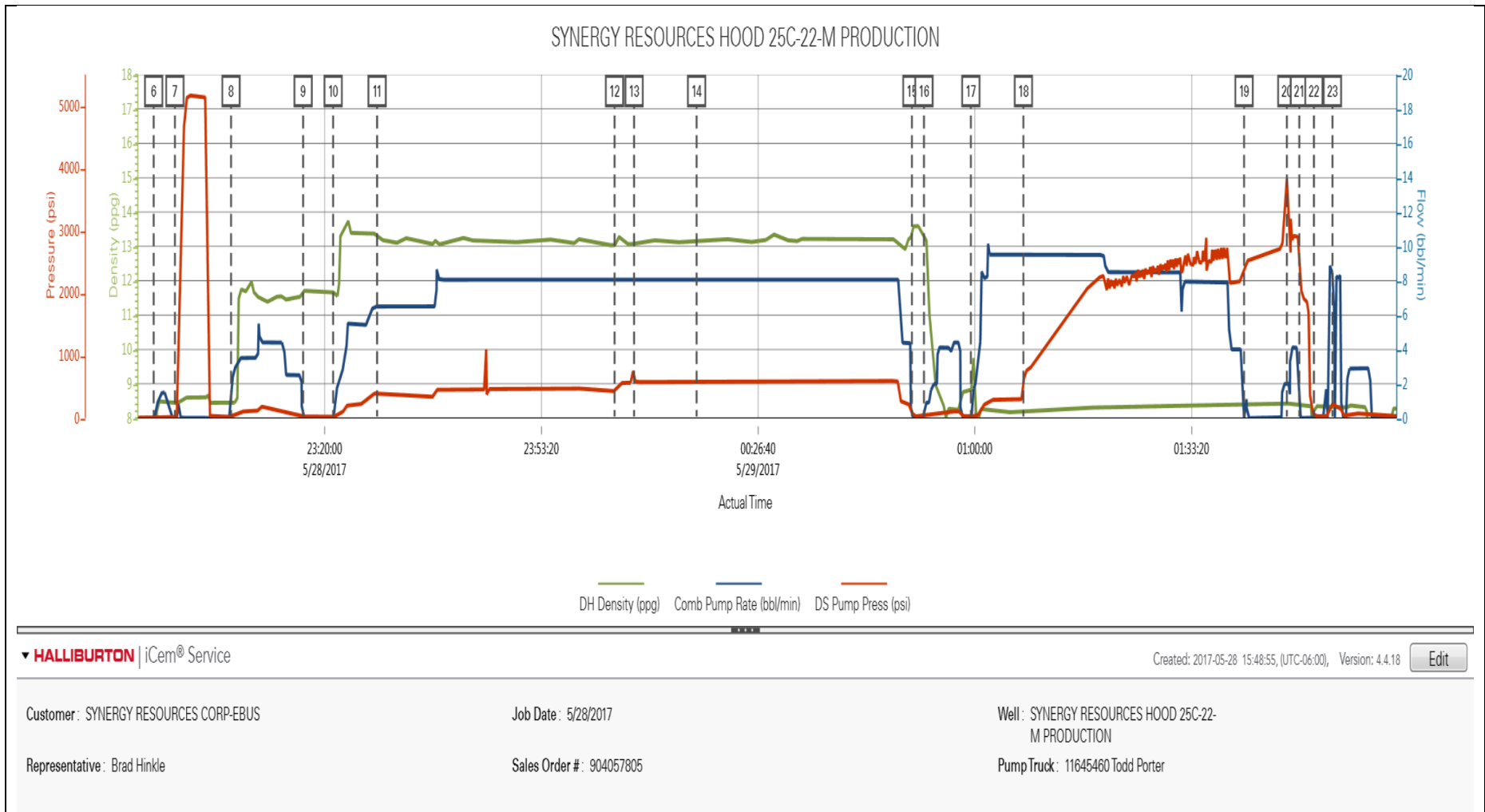
Type	Seq. No.	Activity	Graph Label	Date	Time	Source	DH Density (ppg)	Comb Pump Rate (bbl/min)	DS Pump Press (psi)	Comments
Event	1	Call Out	Call Out	5/28/2017	11:00:00	USER				Crew called for an on location of 1800. Crew was Bradley Hinkle, Todd Porter, Saiaiga Tauilili, Thomas Haas and Luis Ramirez.
Event	2	Depart Yard Safety Meeting	Depart Yard Safety Meeting	5/28/2017	15:00:00	USER				Pre-journey safety meeting.
Event	3	Arrive at Location from Service Center	Arrive at Location from Service Center	5/28/2017	15:50:41	USER				Sign in, perform a site assessment and pre rig-up safety meeting.
Event	4	Safety Meeting - Pre Job	Safety Meeting - Pre Job	5/28/2017	20:00:00	USER	0.00	0.00	3.00	Pre-job safety meeting with all personnel on location.
Event	5	Clean Hole	Clean Hole	5/28/2017	20:30:00	USER	0.01	0.00	1.00	Unexpected gas began to circulate to surface. Rig decided to continue circulating another full bottoms up to get mud weight going in and coming out at a 9.6 ppg.
Event	6	Start Job	Start Job	5/28/2017	22:53:42	COM4	0.02	0.00	0.00	
Event	7	Test Lines	Test Lines	5/28/2017	22:56:58	COM4	8.44	0.00	18.00	Pressure test lines with a 500 PSI electronic kick-out test.
Event	8	Pump Spacer 1	Pump Spacer 1	5/28/2017	23:05:36	COM4	8.44	0.00	20.00	Pump 40 bbls Tuned Spacer mixed at 11.5 ppg with surfactants added. Density verified by pressurized scales.
Event	9	Drop Bottom Plug	Drop Bottom Plug	5/28/2017	23:16:41	COM4	11.71	0.00	31.00	Bottom plug preloaded and

										witnessed by customer.
Event	10	Pump Lead Cement	Pump Lead Cement	5/28/2017	23:21:18	COM4	11.66	0.00	21.00	Pump 295 bbls (1055 sacks) ElastiCem mixed at 13.2 ppg. Density verified by pressurized scales.
Event	11	Check Weight	Check Weight	5/28/2017	23:28:04	COM4	13.32	6.50	384.00	Cement weighed at 13.2 ppg.
Event	12	Pump Tail Cement	Pump Tail Cement	5/29/2017	00:04:35	COM4	13.00	8.10	454.00	Pump 368 bbls (990 sacks) NeoCem mixed at 13.2 ppg. Density verified by pressurized scales.
Event	13	Check Weight	Check Weight	5/29/2017	00:07:35	COM4	13.18	8.10	588.00	Cement weighed at 13.15 ppg.
Event	14	Check Weight	Check Weight	5/29/2017	00:17:12	COM4	13.19	8.10	608.00	Cement weighed at 13.3 ppg.
Event	15	Shutdown	Shutdown	5/29/2017	00:50:19	COM4	13.61	0.00	83.00	
Event	16	Clean Lines	Clean Lines	5/29/2017	00:52:10	COM4	13.34	0.00	29.00	Wash pumps and lines until clean.
Event	17	Pump Displacement	Pump Displacement	5/29/2017	00:59:23	COM4	8.81	0.00	24.00	Pump 343 bbls water (first 20 with cement retarder - MMCR) with Biocide and Cla-web added. Good returns throughout. 21 bbls cement to surface with 6 bbl wet shoe accounted for.
Event	18	Displ Reached Cement	Displ Reached Cement	5/29/2017	01:07:28	COM4				
Event	19	Bump Plug	Bump Plug	5/29/2017	01:41:24	COM4	8.38	0.00	2400.00	Bump plug at 2200 PSI and brought pressure 500 PSI over. Held 5 minutes.
Event	20	Other	Other	5/29/2017	01:47:59	COM4	8.45	2.00	3833.00	Burst plug at 3924 PSI and pumped 6 bbls for wet shoe at 4 bbls per minute.
Event	21	Check Floats	Check Floats	5/29/2017	01:49:54	USER	8.40	0.00	2467.00	Floats held. 2 bbls back.

Event	22	End Job	End Job	5/29/2017	01:52:09	COM4				
Event	23	Pre-Rig Down Safety Meeting	Pre-Rig Down Safety Meeting	5/29/2017	01:55:00	USER	8.34	8.50	241.00	Pre-rig down safety meeting.
Event	24	Depart Location for Service Center or Other Site	Depart Location for Service Center or Other Site	5/29/2017	03:30:00	USER				Pre-journey safety meeting.

3.0 Attachments

3.1 Synergy Hood 25C-22-M Production Job Chart



▼ HALLIBURTON | iCem® Service

Created: 2017-05-28 15:48:55, (UTC-06:00), Version: 4.4.18

Edit

Customer: SYNERGY RESOURCES CORP-EBUS

Job Date: 5/28/2017

Well: SYNERGY RESOURCES HOOD 25C-22-M PRODUCTION

Representative: Brad Hinkle

Sales Order #: 904057805

Pump Truck: 11645460 Todd Porter