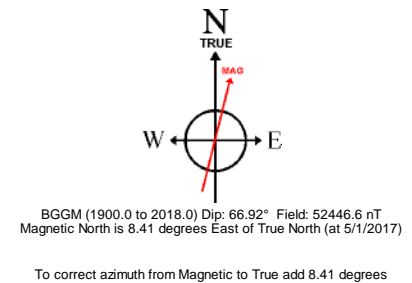
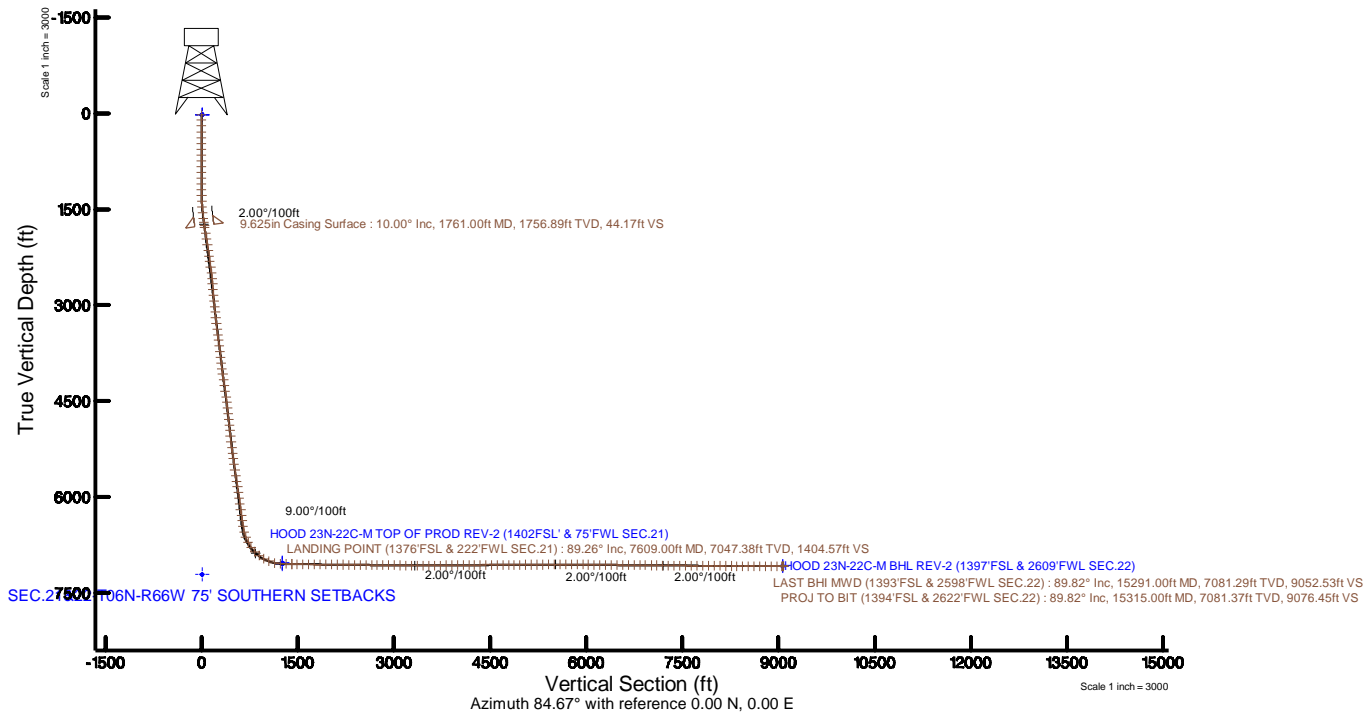
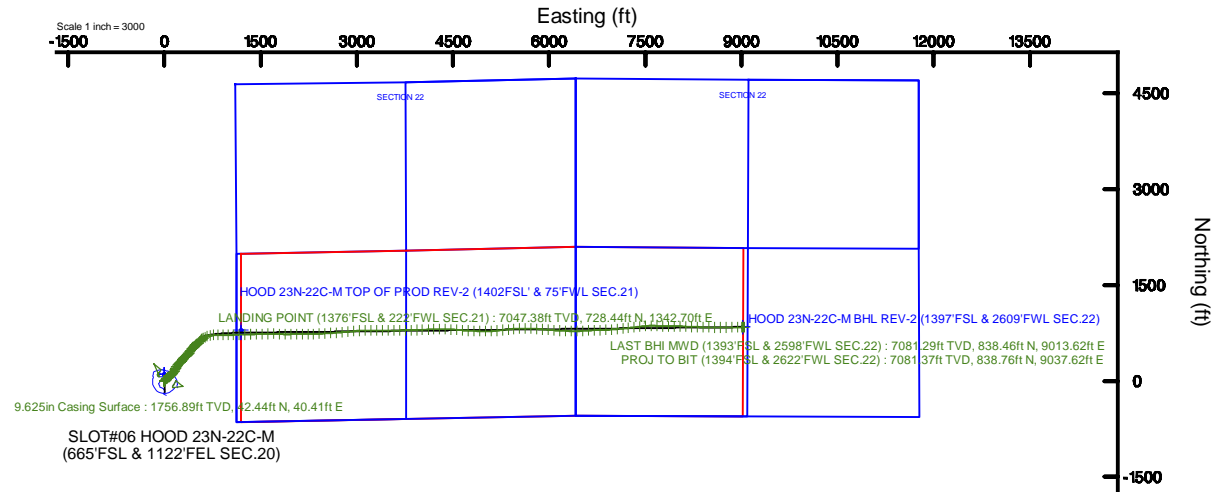


# SRC ENERGY

Location: COLORADO Slot: SLOT#06 HOOD 23N-22C-M (665'FSL & 1122'FEL SEC.20)  
 Field: WELD COUNTY (NAD83, TRUE NORTH) Well: HOOD 23N-22C-M  
 Facility: SEC.20-T06N-R66W Wellbore: HOOD 23N-22C-M PWB

Plot reference wellpath is HOOD 23N-22C-M REV-6.0 PWP	Grid System: NAD83 / Lambert Colorado SP, Northern Zone (501), US feet
True vertical depths are referenced to PRECISION 562 (25) (RKB)	* = Wellpath was transformed from a different geodetic datum
Measured depths are referenced to PRECISION 562 (25) (RKB)	North Reference: True north
PRECISION 562 (25) (RKB) to Mean Sea Level: 4759 feet	Scale: True distance
Mean Sea Level to Mud line (At Slot: SLOT#06 HOOD 23N-22C-M (665'FSL & 1122'FEL SEC.20)): 0 feet	Depths are in feet
Coordinates are in feet referenced to Slot	Created by: wagner on 2017-06-30
	Database: WA_DEN_Denver_Deft





# Actual Wellpath Report

HOOD 23N-22C-M AWP

Page 1 of 11



## REFERENCE WELLPATH IDENTIFICATION

Operator	SRC ENERGY	Slot	SLOT#06 HOOD 23N-22C-M (665'FSL & 1122'FEL SEC.20)
Area	COLORADO	Well	HOOD 23N-22C-M
Field	WELD COUNTY (NAD83,TRUE NORTH)	Wellbore	HOOD 23N-22C-M AWB
Facility	SEC.20-T06N-R66W		

## REPORT SETUP INFORMATION

Projection System	NAD83 / Lambert Colorado SP, Northern Zone (501), US feet	Software System	WellArchitect® 5.0
North Reference	True	User	Wagnjam
Scale	0.999964	Report Generated	6/30/2017 at 5:01:06 PM
Convergence at slot	0.46° East	Database/Source file	WA_DEN_Denver_Defn/HOOD_23N-22C-M_AWP.xml

## WELLPATH LOCATION

	Local coordinates		Grid coordinates		Geographic coordinates	
	North[ft]	East[ft]	Easting[US ft]	Northing[US ft]	Latitude	Longitude
Slot Location	-100.19	0.31	3195754.62	1414178.99	40°28'05.488"N	104°47'47.119"W
Facility Reference Pt			3195753.51	1414279.17	40°28'06.478"N	104°47'47.123"W
Field Reference Pt			3171284.48	1426358.81	40°30'07.643"N	104°53'02.634"W

## WELLPATH DATUM

Calculation method	Minimum curvature	PRECISION 562 (25') (RKB) to Facility Vertical Datum	4759.00ft
Horizontal Reference Pt	Slot	PRECISION 562 (25') (RKB) to Mean Sea Level	4759.00ft
Vertical Reference Pt	PRECISION 562 (25') (RKB)	PRECISION 562 (25') (RKB) to Mud Line at Slot (SLOT#06 HOOD 23N-22C-M (665'FSL & 1122'FEL SEC.20))	4759.00ft
MD Reference Pt	PRECISION 562 (25') (RKB)	Section Origin	N 0.00, E 0.00 ft
Field Vertical Reference	Mean Sea Level	Section Azimuth	84.67°



# Actual Wellpath Report

HOOD 23N-22C-M AWP

Page 2 of 11



## REFERENCE WELLPATH IDENTIFICATION

Operator	SRC ENERGY	Slot	SLOT#06 HOOD 23N-22C-M (665'FSL & 1122'FEL SEC.20)
Area	COLORADO	Well	HOOD 23N-22C-M
Field	WELD COUNTY (NAD83,TRUE NORTH)	Wellbore	HOOD 23N-22C-M AWB
Facility	SEC.20-T06N-R66W		

## WELLPATH DATA (174 stations) † = interpolated/extrapolated station

MD [ft]	Inclination [°]	Azimuth [°]	TVD [ft]	Vert Sect [ft]	North [ft]	East [ft]	DLS [°/100ft]	Comments
0.00†	0.000	0.070	0.00	0.00	0.00	0.00	0.00	
25.00	0.000	0.070	25.00	0.00	0.00	0.00	0.00	
109.00	0.330	0.070	109.00	0.02	0.24	0.00	0.39	
199.00	0.190	25.650	199.00	0.12	0.64	0.07	0.20	
291.00	0.480	274.140	291.00	-0.18	0.80	-0.25	0.63	
384.00	0.210	0.430	384.00	-0.54	1.00	-0.64	0.55	
474.00	0.160	175.190	474.00	-0.53	1.04	-0.63	0.41	
564.00	0.210	305.290	564.00	-0.66	1.01	-0.75	0.37	
654.00	0.200	149.460	654.00	-0.71	0.97	-0.81	0.45	
744.00	0.570	178.260	743.99	-0.68	0.39	-0.71	0.45	
834.00	0.670	179.990	833.99	-0.75	-0.59	-0.70	0.11	
924.00	0.330	221.740	923.98	-0.99	-1.31	-0.87	0.53	
1014.00	0.660	131.350	1013.98	-0.82	-1.84	-0.66	0.82	
1104.00	0.510	52.720	1103.98	-0.13	-1.94	0.05	0.83	
1194.00	0.420	6.180	1193.98	0.28	-1.37	0.41	0.42	
1284.00	1.710	30.650	1283.96	1.13	0.11	1.13	1.49	
1374.00	4.060	40.910	1373.84	4.22	3.67	3.90	2.66	
1464.00	5.750	40.060	1463.51	9.73	9.53	8.89	1.88	
1554.00	8.120	44.100	1552.84	17.77	17.55	16.21	2.69	
1644.00	9.710	44.290	1641.75	28.38	27.55	25.94	1.77	
1712.00	10.620	42.960	1708.68	37.43	36.24	34.21	1.38	
1794.00	9.620	50.220	1789.41	48.72	46.15	44.63	1.97	
1884.00	10.470	61.990	1878.04	62.47	54.81	57.63	2.46	
1973.00	10.390	58.920	1965.57	77.16	62.75	71.64	0.63	
2062.00	10.540	55.450	2053.09	91.49	71.51	85.22	0.73	
2152.00	10.550	45.170	2141.58	105.03	81.98	97.84	2.09	
2242.00	10.450	39.700	2230.07	117.17	94.07	108.90	1.11	
2331.00	10.370	42.150	2317.61	128.78	106.22	119.43	0.51	
2421.00	10.410	41.580	2406.13	140.69	118.31	130.26	0.12	
2510.00	10.390	38.330	2493.67	152.10	130.62	140.58	0.66	



# Actual Wellpath Report

HOOD 23N-22C-M AWP

Page 3 of 11



## REFERENCE WELLPATH IDENTIFICATION

Operator	SRC ENERGY	Slot	SLOT#06 HOOD 23N-22C-M (665'FSL & 1122'FEL SEC.20)
Area	COLORADO	Well	HOOD 23N-22C-M
Field	WELD COUNTY (NAD83,TRUE NORTH)	Wellbore	HOOD 23N-22C-M AWB
Facility	SEC.20-T06N-R66W		

## WELLPATH DATA (174 stations)

MD [ft]	Inclination [°]	Azimuth [°]	TVD [ft]	Vert Sect [ft]	North [ft]	East [ft]	DLS [°/100ft]	Comments
2600.00	10.430	33.620	2582.19	162.83	143.77	150.12	0.95	
2689.00	10.030	20.240	2669.79	171.24	157.75	157.26	2.70	
2778.00	9.880	18.010	2757.45	177.61	172.29	162.30	0.46	
2868.00	9.880	26.050	2846.12	184.69	186.57	168.08	1.53	
2958.00	9.920	32.760	2934.78	193.49	200.02	175.67	1.28	
3047.00	9.830	30.470	3022.46	202.67	213.02	183.67	0.45	
3136.00	9.850	33.790	3110.16	211.91	225.89	191.76	0.64	
3226.00	9.910	34.880	3198.82	221.77	238.64	200.47	0.22	
3314.00	9.870	35.250	3285.51	231.57	251.02	209.15	0.09	
3404.00	9.900	40.750	3374.18	242.16	263.18	218.65	1.05	
3493.00	9.960	44.520	3461.85	253.55	274.46	229.04	0.73	
3583.00	9.910	49.840	3550.50	265.86	285.00	240.42	1.02	
3672.00	9.950	47.980	3638.17	278.31	295.09	251.98	0.36	
3761.00	9.870	38.330	3725.84	289.74	306.22	262.43	1.87	
3851.00	9.740	32.440	3814.53	299.73	318.70	271.30	1.12	
3940.00	9.860	33.520	3902.23	309.12	331.40	279.54	0.25	
4030.00	9.870	39.260	3990.90	319.37	343.80	288.68	1.09	
4119.00	9.810	48.570	4078.60	330.85	354.73	299.19	1.79	
4208.00	9.840	52.280	4166.30	343.40	364.40	310.89	0.71	
4298.00	9.740	52.000	4254.99	356.31	373.79	322.97	0.12	
4387.00	9.840	52.610	4342.69	369.09	383.04	334.95	0.16	
4477.00	9.750	49.750	4431.38	381.85	392.63	346.88	0.55	
4566.00	9.840	40.980	4519.09	393.53	403.25	357.62	1.68	
4656.00	9.740	32.840	4607.78	403.80	415.45	366.79	1.54	
4745.00	9.830	36.780	4695.49	413.55	427.86	375.42	0.76	
4835.00	9.730	36.210	4784.18	423.74	440.15	384.51	0.15	
4924.00	9.750	32.450	4871.90	433.35	452.58	393.00	0.71	
5014.00	9.980	29.550	4960.57	442.48	465.79	400.93	0.61	
5103.00	9.860	31.110	5048.23	451.41	479.02	408.67	0.33	
5193.00	10.390	34.390	5136.83	461.18	492.32	417.24	0.87	



# Actual Wellpath Report

HOOD 23N-22C-M AWP

Page 4 of 11



## REFERENCE WELLPATH IDENTIFICATION

Operator	SRC ENERGY	Slot	SLOT#06 HOOD 23N-22C-M (665'FSL & 1122'FEL SEC.20)
Area	COLORADO	Well	HOOD 23N-22C-M
Field	WELD COUNTY (NAD83,TRUE NORTH)	Wellbore	HOOD 23N-22C-M AWB
Facility	SEC.20-T06N-R66W		

## WELLPATH DATA (174 stations)

MD [ft]	Inclination [°]	Azimuth [°]	TVD [ft]	Vert Sect [ft]	North [ft]	East [ft]	DLS [°/100ft]	Comments
5282.00	10.480	37.370	5224.36	471.79	505.38	426.69	0.61	
5372.00	10.460	43.280	5312.87	483.47	517.83	437.26	1.19	
5461.00	10.180	47.350	5400.43	495.79	529.04	448.58	0.88	
5551.00	10.230	45.540	5489.00	508.32	540.02	460.13	0.36	
5640.00	10.240	50.670	5576.59	521.00	550.57	471.89	1.02	
5730.00	10.130	50.530	5665.17	534.19	560.68	484.19	0.13	
5819.00	10.020	53.230	5752.80	547.27	570.29	496.43	0.54	
5909.00	10.140	52.350	5841.41	560.65	579.81	508.98	0.22	
5998.00	10.020	50.950	5929.04	573.71	589.48	521.20	0.31	
6088.00	10.190	49.140	6017.64	586.70	599.62	533.30	0.40	
6177.00	10.290	45.480	6105.22	599.27	610.34	544.92	0.74	
6267.00	10.130	39.290	6193.80	611.06	622.10	555.66	1.23	
6357.00	10.040	39.620	6282.41	622.16	634.27	565.68	0.12	
6446.00	10.080	48.710	6370.05	633.95	645.39	576.48	1.78	
6535.00	10.140	55.850	6457.67	647.11	654.92	588.81	1.41	
6624.00	15.360	57.920	6544.45	664.52	665.59	605.30	5.89	
6714.00	22.260	60.660	6629.59	690.76	680.29	630.29	7.73	
6803.00	29.630	66.410	6709.58	727.11	697.38	665.20	8.74	
6893.00	35.940	79.850	6785.30	774.67	710.97	711.69	10.67	
6982.00	43.620	87.580	6853.69	831.48	716.88	768.19	10.25	
7072.00	52.430	89.700	6913.83	898.15	718.38	835.01	9.94	
7161.00	59.960	90.120	6963.31	971.74	718.49	908.91	8.47	
7251.00	69.070	89.430	7001.99	1052.57	718.83	990.07	10.15	
7340.00	76.960	88.710	7027.97	1137.37	720.22	1075.11	8.90	
7430.00	85.350	87.830	7041.80	1226.05	722.91	1163.92	9.37	
7519.00	89.110	88.260	7046.10	1314.77	725.94	1252.74	4.25	
7609.00	89.260	88.560	7047.38	1404.57	728.44	1342.70	0.37	LANDING POINT (1376'FSL & 222'FWL SEC.21)
7698.00	89.230	88.530	7048.55	1493.36	730.70	1431.66	0.05	
7788.00	89.140	89.210	7049.83	1583.11	732.47	1521.64	0.76	
7877.00	89.260	87.080	7051.08	1671.93	735.35	1610.58	2.40	



# Actual Wellpath Report

HOOD 23N-22C-M AWP

Page 5 of 11



## REFERENCE WELLPATH IDENTIFICATION

Operator	SRC ENERGY	Slot	SLOT#06 HOOD 23N-22C-M (665'FSL & 1122'FEL SEC.20)
Area	COLORADO	Well	HOOD 23N-22C-M
Field	WELD COUNTY (NAD83,TRUE NORTH)	Wellbore	HOOD 23N-22C-M AWB
Facility	SEC.20-T06N-R66W		

## WELLPATH DATA (174 stations)

MD [ft]	Inclination [°]	Azimuth [°]	TVD [ft]	Vert Sect [ft]	North [ft]	East [ft]	DLS [°/100ft]	Comments
7967.00	89.140	91.220	7052.33	1761.63	736.69	1700.54	4.60	
8056.00	89.200	93.530	7053.62	1849.81	733.00	1789.45	2.60	
8146.00	89.260	90.270	7054.83	1939.07	730.01	1879.38	3.62	
8235.00	89.480	89.310	7055.81	2027.71	730.34	1968.37	1.11	
8325.00	89.510	87.630	7056.60	2117.51	732.74	2058.33	1.87	
8414.00	89.380	91.580	7057.47	2206.15	733.36	2147.31	4.44	
8504.00	89.450	90.250	7058.38	2295.61	731.92	2237.29	1.48	
8593.00	89.350	89.500	7059.32	2384.24	732.11	2326.28	0.85	
8683.00	89.320	85.440	7060.36	2474.11	736.09	2416.17	4.51	
8772.00	89.320	85.420	7061.42	2563.09	743.18	2504.88	0.02	
8862.00	89.510	87.410	7062.34	2653.04	748.80	2594.70	2.22	
8951.00	89.230	86.370	7063.32	2741.97	753.63	2683.56	1.21	
9041.00	89.380	84.960	7064.41	2831.95	760.43	2773.29	1.58	
9130.00	89.420	84.780	7065.34	2920.94	768.39	2861.93	0.21	
9220.00	89.320	84.050	7066.33	3010.93	777.15	2951.50	0.82	
9309.00	89.260	85.790	7067.43	3099.92	785.03	3040.14	1.96	
9399.00	89.200	89.570	7068.64	3189.78	788.67	3130.04	4.20	
9488.00	89.290	89.740	7069.81	3278.43	789.21	3219.03	0.22	
9577.00	89.380	90.400	7070.85	3367.03	789.10	3308.02	0.75	
9667.00	90.430	90.780	7071.00	3456.55	788.17	3398.02	1.24	
9756.00	90.520	90.410	7070.26	3545.07	787.25	3487.01	0.43	
9846.00	90.490	88.810	7069.47	3634.73	787.86	3577.00	1.78	
9935.00	90.550	88.420	7068.66	3723.51	790.01	3665.97	0.44	
10025.00	90.770	89.290	7067.62	3813.27	791.81	3755.95	1.00	
10114.00	90.400	89.260	7066.71	3901.97	792.94	3844.93	0.42	
10204.00	90.550	88.030	7065.97	3991.75	795.06	3934.90	1.38	
10293.00	90.550	88.510	7065.11	4080.57	797.75	4023.86	0.54	
10383.00	90.620	86.210	7064.19	4170.46	801.90	4113.75	2.56	
10472.00	90.680	87.600	7063.18	4259.39	806.70	4202.61	1.56	
10562.00	90.620	89.650	7062.16	4349.16	808.86	4292.58	2.28	



# Actual Wellpath Report

HOOD 23N-22C-M AWP

Page 6 of 11



## REFERENCE WELLPATH IDENTIFICATION

Operator	SRC ENERGY	Slot	SLOT#06 HOOD 23N-22C-M (665'FSL & 1122'FEL SEC.20)
Area	COLORADO	Well	HOOD 23N-22C-M
Field	WELD COUNTY (NAD83,TRUE NORTH)	Wellbore	HOOD 23N-22C-M AWB
Facility	SEC.20-T06N-R66W		

## WELLPATH DATA (174 stations)

MD [ft]	Inclination [°]	Azimuth [°]	TVD [ft]	Vert Sect [ft]	North [ft]	East [ft]	DLS [°/100ft]	Comments
10651.00	90.620	91.630	7061.20	4437.67	807.87	4381.56	2.22	
10741.00	90.460	93.570	7060.35	4526.80	803.78	4471.46	2.16	
10829.00	90.370	94.640	7059.71	4613.61	797.48	4559.23	1.22	
10918.00	90.310	94.090	7059.19	4701.33	790.71	4647.97	0.62	
11008.00	90.430	91.870	7058.60	4790.38	786.03	4737.84	2.47	
11097.00	90.180	93.180	7058.13	4878.54	782.11	4826.75	1.50	
11187.00	90.150	91.330	7057.87	4967.75	778.57	4916.68	2.06	
11276.00	90.220	89.570	7057.58	5056.29	777.87	5005.67	1.98	
11366.00	90.250	88.520	7057.21	5146.03	779.37	5095.66	1.17	
11455.00	90.120	84.010	7056.93	5234.97	785.17	5184.45	5.07	
11545.00	90.580	83.720	7056.38	5324.96	794.79	5273.93	0.60	
11634.00	90.280	83.700	7055.71	5413.94	804.54	5362.39	0.34	
11723.00	90.520	86.620	7055.09	5502.93	812.04	5451.06	3.29	
11813.00	89.820	88.090	7054.82	5592.83	816.20	5540.96	1.81	
11902.00	89.810	89.450	7055.11	5681.60	818.11	5629.94	1.53	
11992.00	89.850	92.260	7055.38	5771.06	816.77	5719.92	3.12	
12082.00	89.720	94.100	7055.71	5860.07	811.77	5809.78	2.05	
12171.00	89.570	93.880	7056.26	5947.89	805.58	5898.56	0.30	
12261.00	89.510	95.470	7056.99	6036.52	798.25	5988.25	1.77	
12350.00	89.440	94.340	7057.80	6124.09	790.64	6076.92	1.27	
12440.00	89.260	92.740	7058.82	6213.01	785.08	6166.74	1.79	
12529.00	89.540	91.560	7059.76	6301.25	781.74	6255.67	1.36	
12618.00	89.320	91.580	7060.64	6389.60	779.30	6344.64	0.25	
12708.00	89.230	89.180	7061.78	6479.14	778.71	6434.62	2.67	
12798.00	89.440	86.080	7062.82	6569.00	782.43	6524.53	3.45	
12887.00	89.450	86.850	7063.69	6657.95	787.91	6613.35	0.87	
12977.00	89.630	88.440	7064.41	6747.82	791.61	6703.27	1.78	
13066.00	89.570	88.560	7065.03	6836.62	793.94	6792.24	0.15	
13155.00	89.410	87.080	7065.82	6925.48	797.33	6881.17	1.67	
13245.00	89.690	85.330	7066.53	7015.44	803.28	6970.96	1.97	



# Actual Wellpath Report

HOOD 23N-22C-M AWP

Page 7 of 11



## REFERENCE WELLPATH IDENTIFICATION

Operator	SRC ENERGY	Slot	SLOT#06 HOOD 23N-22C-M (665'FSL & 1122'FEL SEC.20)
Area	COLORADO	Well	HOOD 23N-22C-M
Field	WELD COUNTY (NAD83,TRUE NORTH)	Wellbore	HOOD 23N-22C-M AWB
Facility	SEC.20-T06N-R66W		

## WELLPATH DATA (174 stations)

MD [ft]	Inclination [°]	Azimuth [°]	TVD [ft]	Vert Sect [ft]	North [ft]	East [ft]	DLS [°/100ft]	Comments
13334.00	89.450	84.890	7067.20	7104.44	810.87	7059.64	0.56	
13424.00	89.290	84.010	7068.19	7194.43	819.57	7149.21	0.99	
13513.00	89.290	84.210	7069.29	7283.42	828.71	7237.73	0.22	
13603.00	89.320	84.160	7070.38	7373.41	837.82	7327.26	0.06	
13692.00	89.570	83.800	7071.24	7462.40	847.16	7415.77	0.49	
13782.00	89.420	84.580	7072.04	7552.39	856.27	7505.30	0.88	
13871.00	89.480	89.220	7072.89	7641.29	861.08	7594.14	5.21	
13961.00	89.630	92.720	7073.59	7730.73	859.56	7684.11	3.89	
14051.00	89.420	92.350	7074.34	7819.88	855.58	7774.02	0.47	
14140.00	89.630	90.870	7075.08	7908.23	853.07	7862.98	1.68	
14230.00	89.690	89.560	7075.61	7997.80	852.74	7952.97	1.46	
14319.00	89.630	91.580	7076.14	8086.32	851.85	8041.96	2.27	
14409.00	89.480	93.770	7076.84	8175.44	847.65	8131.86	2.44	
14498.00	89.540	91.630	7077.60	8263.56	843.46	8220.75	2.41	
14588.00	89.570	91.350	7078.30	8352.92	841.12	8310.72	0.31	
14677.00	89.480	92.020	7079.03	8441.25	838.50	8399.68	0.76	
14767.00	89.420	90.760	7079.90	8530.62	836.32	8489.64	1.40	
14856.00	89.690	89.980	7080.59	8619.18	835.74	8578.64	0.93	
14946.00	89.820	90.370	7080.97	8708.76	835.47	8668.64	0.46	
15035.00	90.000	89.280	7081.11	8797.40	835.74	8757.63	1.24	
15125.00	89.880	89.040	7081.21	8887.13	837.06	8847.62	0.30	
15214.00	90.090	89.890	7081.23	8975.81	837.89	8936.62	0.98	
15291.00	89.820	89.270	7081.29	9052.53	838.46	9013.62	0.88	LAST BHI MWD (1393'FSL & 2598'FWL SEC.22)
15315.00	89.820	89.270	7081.37	9076.45	838.76	9037.62	0.00	PROJ TO BIT (1394'FSL & 2622'FWL SEC.22)





# Actual Wellpath Report

HOOD 23N-22C-M AWP

Page 8 of 11



## REFERENCE WELLPATH IDENTIFICATION

Operator	SRC ENERGY	Slot	SLOT#06 HOOD 23N-22C-M (665'FSL & 1122'FEL SEC.20)
Area	COLORADO	Well	HOOD 23N-22C-M
Field	WELD COUNTY (NAD83,TRUE NORTH)	Wellbore	HOOD 23N-22C-M AWB
Facility	SEC.20-T06N-R66W		

## HOLE & CASING SECTIONS - Ref Wellbore: HOOD 23N-22C-M AWB Ref Wellpath: HOOD 23N-22C-M AWP

String/Diameter	Start MD [ft]	End MD [ft]	Interval [ft]	Start TVD [ft]	End TVD [ft]	Start N/S [ft]	Start E/W [ft]	End N/S [ft]	End E/W [ft]
13.5in Open Hole	25.00	1771.00	1746.00	25.00	1766.74	0.00	0.00	43.60	41.68
9.625in Casing Surface	25.00	1761.00	1736.00	25.00	1756.89	0.00	0.00	42.44	40.41
8.5in Open Hole	1771.00	15315.00	13544.00	1766.74	7081.37	43.60	41.68	838.76	9037.62



# Actual Wellpath Report

HOOD 23N-22C-M AWP

Page 9 of 11



## REFERENCE WELLPATH IDENTIFICATION

Operator	SRC ENERGY	Slot	SLOT#06 HOOD 23N-22C-M (665'FSL & 1122'FEL SEC.20)
Area	COLORADO	Well	HOOD 23N-22C-M
Field	WELD COUNTY (NAD83,TRUE NORTH)	Wellbore	HOOD 23N-22C-M AWB
Facility	SEC.20-T06N-R66W		

## TARGETS

Name	TVD [ft]	North [ft]	East [ft]	Grid East [US ft]	Grid North [US ft]	Latitude	Longitude	Shape
SEC.21-T06N-R66W	21.00	100.19	-0.31	3195753.51	1414279.17	40°28'06.478"N	104°47'47.123"W	polygon
SEC.21-T06N-R66W 1/4 LINES	21.00	100.19	-0.31	3195753.51	1414279.17	40°28'06.478"N	104°47'47.123"W	polygon
SEC.22-T06N-R66W	21.00	100.19	-0.31	3195753.51	1414279.17	40°28'06.478"N	104°47'47.123"W	polygon
SEC.22-T06N-R66W 1/4 LINES	21.00	100.19	-0.31	3195753.51	1414279.17	40°28'06.478"N	104°47'47.123"W	polygon
HOOD 23N-22C-M TOP OF PROD ON PLAT (1442FSL' & 75'FWL SEC.21)	7030.00	793.83	1195.24	3196943.47	1414982.25	40°28'13.332"N	104°47'31.654"W	point
HOOD 23N-22C-M TOP OF PROD REV-1 (1402FSL' & 75'FWL SEC.21)	7030.00	754.00	1195.27	3196943.82	1414942.42	40°28'12.938"N	104°47'31.654"W	point
HOOD 23N-22C-M TOP OF PROD REV-2 (1402FSL' & 75'FWL SEC.21)	7044.10	754.00	1195.27	3196943.82	1414942.42	40°28'12.938"N	104°47'31.654"W	point
HOOD 23N-22C-M BHL REV-1 (1397'FSL & 2609'FWL SEC.22)	7073.00	842.09	9024.42	3204771.72	1415092.62	40°28'13.793"N	104°45'50.353"W	point
HOOD 23N-22C-M BHL REV-2 (1397'FSL & 2609'FWL SEC.22)	7081.88	842.09	9024.42	3204771.72	1415092.62	40°28'13.793"N	104°45'50.353"W	point
SEC.21&22-T06N-R66W 75' SOUTHERN SETBACKS	7209.00	100.19	-0.31	3195753.51	1414279.17	40°28'06.478"N	104°47'47.123"W	polygon



# Actual Wellpath Report

HOOD 23N-22C-M AWP

Page 10 of 11



## REFERENCE WELLPATH IDENTIFICATION

Operator	SRC ENERGY	Slot	SLOT#06 HOOD 23N-22C-M (665'FSL & 1122'FEL SEC.20)
Area	COLORADO	Well	HOOD 23N-22C-M
Field	WELD COUNTY (NAD83,TRUE NORTH)	Wellbore	HOOD 23N-22C-M AWB
Facility	SEC.20-T06N-R66W		

## WELLPATH COMPOSITION - Ref Wellbore: HOOD 23N-22C-M AWB Ref Wellpath: HOOD 23N-22C-M AWP

Start MD (ft)	End MD (ft)	Positional Uncertainty Model	Log Name/Comment	Wellbore
25.00	1712.00	Custom BHI NaviTrak (Standard Rotating+Axial Corr) (Rockies 0.03Gt model)	BHI NAVITRAK 13.5" (STD ROTATING, AXIAL, ROCKIES GT)<109-1712>	HOOD 23N-22C-M AWB
1712.00	15291.00	Custom BHI AutoTrak Curve (IFR1, Short) (Rockies 0.03Gt model)	BHI ATC 8.5" (IFR, SHORT, ROCKIES GT)<1794-15291>	HOOD 23N-22C-M AWB
15291.00	15315.00	Blind Drilling (std)	Projection to bit	HOOD 23N-22C-M AWB



# Actual Wellpath Report

HOOD 23N-22C-M AWP

Page 11 of 11



## REFERENCE WELLPATH IDENTIFICATION

Operator	SRC ENERGY	Slot	SLOT#06 HOOD 23N-22C-M (665'FSL & 1122'FEL SEC.20)
Area	COLORADO	Well	HOOD 23N-22C-M
Field	WELD COUNTY (NAD83,TRUE NORTH)	Wellbore	HOOD 23N-22C-M AWB
Facility	SEC.20-T06N-R66W		

## WELLPATH COMMENTS

MD [ft]	Inclination [°]	Azimuth [°]	TVD [ft]	Comment
7609.00	89.260	88.560	7047.38	LANDING POINT (1376'FSL & 222'FWL SEC.21)
15291.00	89.820	89.270	7081.29	LAST BHI MWD (1393'FSL & 2598'FWL SEC.22)
15315.00	89.820	89.270	7081.37	PROJ TO BIT (1394'FSL & 2622'FWL SEC.22)