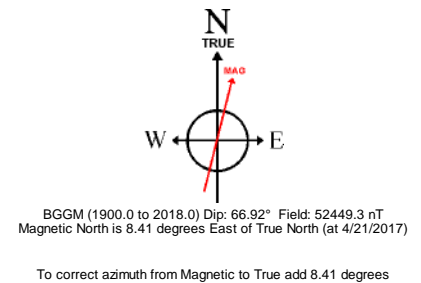
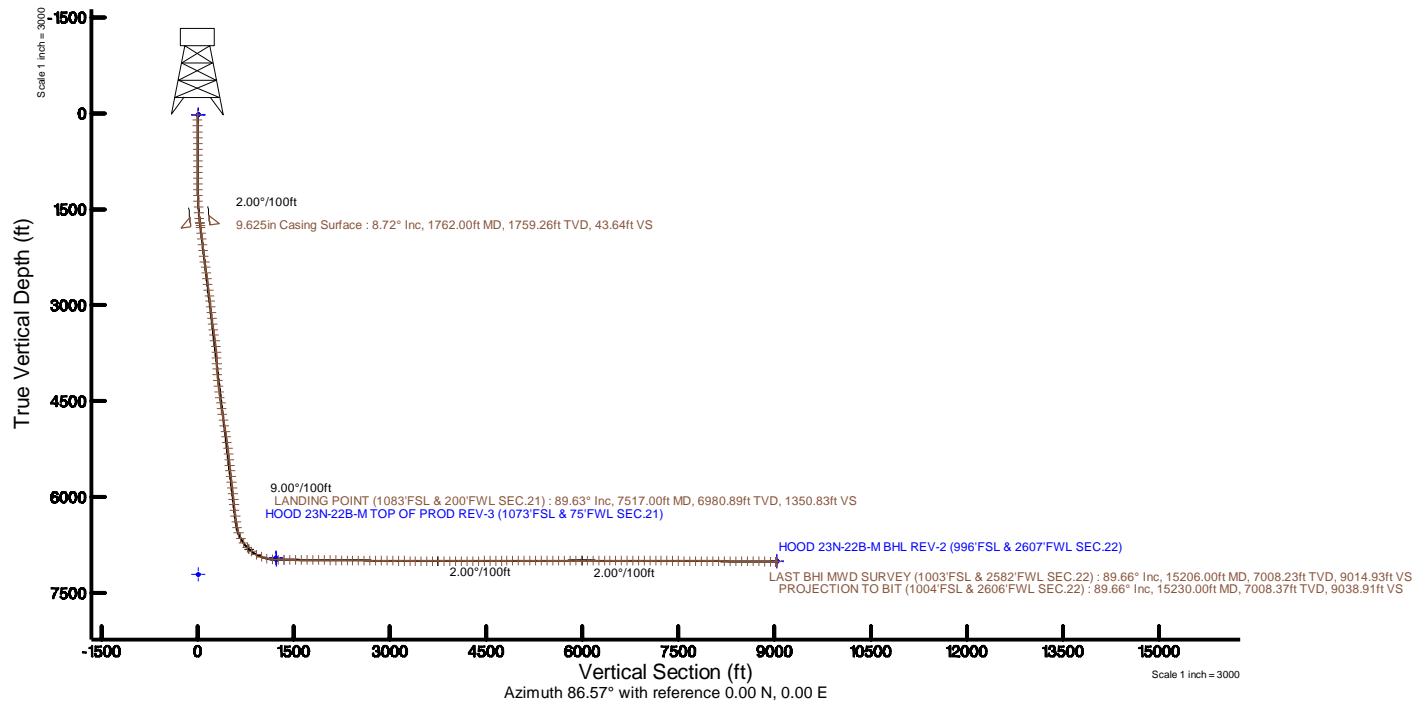
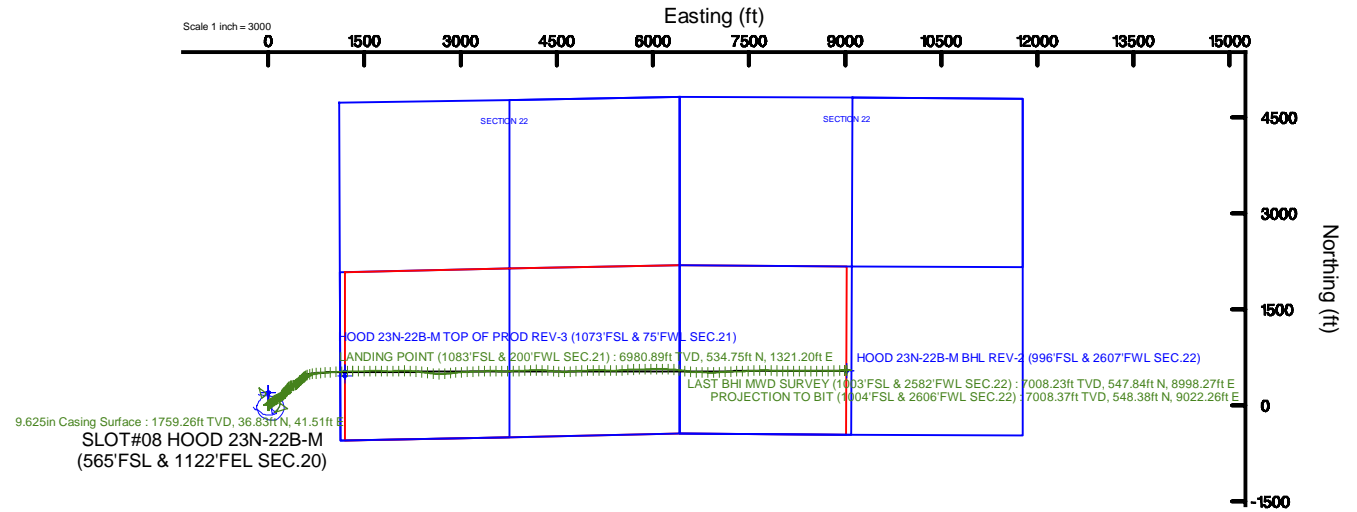


SRC ENERGY

Location: COLORADO Slot: SLOT#08 HOOD 23N-22B-M (565'FSL & 1122'FEL SEC.20)
 Field: WELD COUNTY (NAD83, TRUE NORTH) Well: HOOD 23N-22B-M
 Facility: SEC.20-T06N-R66W Wellbore: HOOD 23N-22B-M PWB

Plot reference wellpath is HOOD 23N-22B-M REV-C.0 PWP	Grid System: NAD83 / Lambert Colorado SP, Northern Zone (501), US feet
True vertical depths are referenced to PRECISION 562 (25) (RKB)	* = Wellpath was transformed from a different geodetic datum
Measured depths are referenced to PRECISION 562 (25) (RKB)	North Reference: True north
PRECISION 562 (25) (RKB) to Mean Sea Level: 4759 feet	Scale: True distance
Mean Sea Level to Mud line (At Slot: SLOT#08 HOOD 23N-22B-M (565'FSL & 1122'FEL SEC.20)): 0 feet	Depths are in feet
Coordinates are in feet referenced to Slot	Created by: wajriam on 2017-06-30
	Database: WA_DEN_Denver_Deln





Actual Wellpath Report

HOOD 23N-22B-M AWP

Page 1 of 11



REFERENCE WELLPATH IDENTIFICATION

Operator	SRC ENERGY	Slot	SLOT#08 HOOD 23N-22B-M (565'FSL & 1122'FEL SEC.20)
Area	COLORADO	Well	HOOD 23N-22B-M
Field	WELD COUNTY (NAD83,TRUE NORTH)	Wellbore	HOOD 23N-22B-M AWB
Facility	SEC.20-T06N-R66W		

REPORT SETUP INFORMATION

Projection System	NAD83 / Lambert Colorado SP, Northern Zone (501), US feet	Software System	WellArchitect® 5.0
North Reference	True	User	Wagnjam
Scale	0.999964	Report Generated	6/30/2017 at 5:33:44 PM
Convergence at slot	0.46° East	Database/Source file	WA_DEN_Denver_Defn/HOOD_23N-22B-M_AWP.xml

WELLPATH LOCATION

	Local coordinates		Grid coordinates		Geographic coordinates	
	North[ft]	East[ft]	Easting[US ft]	Northing[US ft]	Latitude	Longitude
Slot Location	-200.07	0.31	3195755.41	1414079.11	40°28'04.501"N	104°47'47.119"W
Facility Reference Pt			3195753.51	1414279.17	40°28'06.478"N	104°47'47.123"W
Field Reference Pt			3171284.48	1426358.81	40°30'07.643"N	104°53'02.634"W

WELLPATH DATUM

Calculation method	Minimum curvature	PRECISION 562 (25') (RKB) to Facility Vertical Datum	4759.00ft
Horizontal Reference Pt	Slot	PRECISION 562 (25') (RKB) to Mean Sea Level	4759.00ft
Vertical Reference Pt	PRECISION 562 (25') (RKB)	PRECISION 562 (25') (RKB) to Mud Line at Slot (SLOT#08 HOOD 23N-22B-M (565'FSL & 1122'FEL SEC.20))	4759.00ft
MD Reference Pt	PRECISION 562 (25') (RKB)	Section Origin	N 0.00, E 0.00 ft
Field Vertical Reference	Mean Sea Level	Section Azimuth	86.57°



Actual Wellpath Report

HOOD 23N-22B-M AWP

Page 2 of 11



REFERENCE WELLPATH IDENTIFICATION

Operator	SRC ENERGY	Slot	SLOT#08 HOOD 23N-22B-M (565'FSL & 1122'FEL SEC.20)
Area	COLORADO	Well	HOOD 23N-22B-M
Field	WELD COUNTY (NAD83,TRUE NORTH)	Wellbore	HOOD 23N-22B-M AWB
Facility	SEC.20-T06N-R66W		

WELLPATH DATA (173 stations) † = interpolated/extrapolated station

MD [ft]	Inclination [°]	Azimuth [°]	TVD [ft]	Vert Sect [ft]	North [ft]	East [ft]	DLS [°/100ft]	Comments
0.00†	0.000	67.900	0.00	0.00	0.00	0.00	0.00	
25.00	0.000	67.900	25.00	0.00	0.00	0.00	0.00	
108.00	0.570	67.900	108.00	0.39	0.16	0.38	0.69	
198.00	0.610	75.960	197.99	1.29	0.44	1.26	0.10	
290.00	0.390	125.620	289.99	2.01	0.38	1.99	0.51	
382.00	0.330	91.990	381.99	2.52	0.18	2.51	0.23	
472.00	0.400	95.810	471.99	3.09	0.14	3.08	0.08	
562.00	1.040	103.640	561.98	4.18	-0.08	4.19	0.72	
652.00	0.700	137.750	651.97	5.30	-0.68	5.35	0.67	
742.00	0.400	124.580	741.97	5.89	-1.27	5.98	0.36	
832.00	0.570	295.970	831.96	5.75	-1.25	5.84	1.07	
922.00	0.720	317.220	921.96	5.00	-0.64	5.05	0.31	
1012.00	1.000	353.720	1011.95	4.61	0.56	4.58	0.67	
1102.00	0.930	342.720	1101.94	4.39	2.04	4.28	0.22	
1192.00	1.720	10.800	1191.91	4.55	4.06	4.31	1.11	
1282.00	2.820	31.580	1281.84	6.15	7.27	5.73	1.51	
1372.00	2.860	56.160	1371.73	9.36	10.41	8.75	1.34	
1462.00	4.550	54.010	1461.54	14.30	13.76	13.50	1.88	
1552.00	6.090	50.240	1551.15	21.16	18.91	20.06	1.75	
1642.00	7.520	48.750	1640.52	29.66	25.85	28.16	1.60	
1712.00	8.550	50.770	1709.83	37.50	32.16	35.64	1.53	
1792.00	8.820	53.080	1788.91	47.43	39.60	45.15	0.55	
1882.00	8.180	50.240	1877.92	58.35	47.84	55.58	0.85	
1971.00	8.110	48.310	1966.03	68.38	56.07	65.14	0.32	
2060.00	8.510	48.660	2054.09	78.50	64.59	74.77	0.45	
2150.00	8.060	53.590	2143.15	89.05	72.74	84.85	0.93	
2240.00	8.210	59.920	2232.25	100.09	79.70	95.49	1.01	
2329.00	7.960	65.110	2320.37	111.50	85.48	106.58	0.87	
2419.00	8.180	69.790	2409.47	123.43	90.32	118.24	0.77	
2508.00	8.370	69.280	2497.55	135.68	94.80	130.24	0.23	



Actual Wellpath Report

HOOD 23N-22B-M AWP

Page 3 of 11



REFERENCE WELLPATH IDENTIFICATION

Operator	SRC ENERGY	Slot	SLOT#08 HOOD 23N-22B-M (565'FSL & 1122'FEL SEC.20)
Area	COLORADO	Well	HOOD 23N-22B-M
Field	WELD COUNTY (NAD83,TRUE NORTH)	Wellbore	HOOD 23N-22B-M AWB
Facility	SEC.20-T06N-R66W		

WELLPATH DATA (173 stations)

MD [ft]	Inclination [°]	Azimuth [°]	TVD [ft]	Vert Sect [ft]	North [ft]	East [ft]	DLS [°/100ft]	Comments
2597.00	8.220	66.620	2585.62	147.84	99.61	142.14	0.46	
2687.00	8.320	62.200	2674.68	159.82	105.20	153.80	0.71	
2776.00	8.330	54.620	2762.75	171.16	111.94	164.76	1.23	
2866.00	8.070	55.030	2851.83	182.07	119.33	175.25	0.30	
2955.00	8.690	52.190	2939.88	192.95	127.04	185.68	0.84	
3045.00	8.590	44.230	3028.86	203.53	136.02	195.74	1.33	
3134.00	8.090	45.810	3116.92	213.18	145.15	204.87	0.62	
3223.00	8.420	54.880	3205.00	223.47	153.26	214.69	1.51	
3312.00	9.170	55.160	3292.95	235.07	161.06	225.84	0.84	
3402.00	9.240	53.570	3381.79	247.25	169.45	237.54	0.29	
3491.00	8.890	58.350	3469.68	259.30	177.30	249.14	0.93	
3580.00	8.900	58.020	3557.61	271.41	184.56	260.83	0.06	
3670.00	8.880	48.970	3646.54	283.03	192.81	271.98	1.55	
3759.00	8.880	29.890	3734.49	292.25	203.27	280.59	3.29	
3849.00	8.790	9.740	3823.44	297.63	216.08	285.21	3.42	
3938.00	9.120	6.750	3911.36	300.43	229.78	287.19	0.64	
4027.00	8.510	15.230	3999.31	303.78	243.14	289.75	1.61	
4117.00	9.060	29.720	4088.26	309.79	255.72	295.02	2.53	
4206.00	8.770	40.120	4176.19	318.29	267.00	302.86	1.84	
4296.00	9.220	48.010	4265.09	328.66	277.07	312.64	1.46	
4385.00	8.910	43.270	4352.98	339.25	286.86	322.67	0.91	
4475.00	8.930	49.830	4441.89	349.92	296.44	332.78	1.13	
4564.00	8.860	63.570	4529.83	361.77	303.95	344.20	2.38	
4654.00	9.370	75.660	4618.71	375.34	308.85	357.51	2.20	
4743.00	9.240	83.650	4706.54	389.59	311.43	371.63	1.46	
4833.00	9.720	85.320	4795.31	404.41	312.85	386.38	0.61	
4922.00	9.620	75.160	4883.05	419.21	315.37	401.06	1.92	
5012.00	9.020	70.020	4971.86	433.34	319.70	414.96	1.14	
5101.00	9.090	67.540	5059.75	446.68	324.77	428.01	0.45	
5191.00	9.170	60.270	5148.62	459.83	331.05	440.81	1.28	



Actual Wellpath Report

HOOD 23N-22B-M AWP

Page 4 of 11



REFERENCE WELLPATH IDENTIFICATION

Operator	SRC ENERGY	Slot	SLOT#08 HOOD 23N-22B-M (565'FSL & 1122'FEL SEC.20)
Area	COLORADO	Well	HOOD 23N-22B-M
Field	WELD COUNTY (NAD83,TRUE NORTH)	Wellbore	HOOD 23N-22B-M AWB
Facility	SEC.20-T06N-R66W		

WELLPATH DATA (173 stations)

MD [ft]	Inclination [°]	Azimuth [°]	TVD [ft]	Vert Sect [ft]	North [ft]	East [ft]	DLS [°/100ft]	Comments
5280.00	9.350	48.840	5236.47	471.90	339.32	452.41	2.07	
5370.00	8.900	39.620	5325.33	482.44	349.50	462.36	1.70	
5459.00	9.000	38.540	5413.25	491.79	360.25	471.08	0.22	
5549.00	8.910	39.220	5502.15	501.22	371.15	479.88	0.15	
5638.00	9.120	43.610	5590.05	511.06	381.60	489.10	0.81	
5728.00	7.890	45.950	5679.06	520.97	391.06	498.46	1.42	
5817.00	8.220	50.640	5767.18	530.75	399.34	507.77	0.83	
5907.00	8.240	47.760	5856.26	540.99	407.76	517.52	0.46	
5996.00	7.990	47.990	5944.37	550.79	416.18	526.84	0.28	
6086.00	8.420	44.400	6033.44	560.57	425.08	536.09	0.74	
6175.00	8.180	43.080	6121.51	569.99	434.36	544.98	0.34	
6265.00	7.840	52.400	6210.64	579.72	442.78	554.22	1.49	
6354.00	8.440	52.910	6298.74	590.17	450.42	564.23	0.68	
6444.00	8.630	53.400	6387.74	601.32	458.43	574.92	0.23	
6533.00	13.150	65.560	6475.13	616.37	466.61	589.51	5.67	
6622.00	19.070	74.860	6560.61	640.09	474.60	612.79	7.24	
6711.00	26.950	74.880	6642.47	674.13	483.67	646.34	8.85	
6801.00	34.510	79.100	6719.78	719.45	493.83	691.14	8.73	
6891.00	43.740	83.970	6789.54	775.94	501.94	747.25	10.80	
6980.00	52.290	85.840	6849.02	842.00	507.74	813.08	9.73	
7070.00	61.320	86.090	6898.25	917.24	513.02	888.13	10.04	
7159.00	69.620	86.360	6935.17	998.13	518.34	968.85	9.33	
7249.00	76.910	86.970	6961.06	1084.26	523.34	1054.84	8.13	
7338.00	84.570	87.090	6975.37	1172.03	527.89	1142.49	8.61	
7428.00	89.380	88.180	6980.12	1261.86	531.59	1232.26	5.48	
7517.00	89.630	87.760	6980.89	1350.83	534.75	1321.20	0.55	LANDING POINT (1083'FSL & 200'FWL SEC.21)
7607.00	89.570	90.240	6981.52	1440.74	536.32	1411.18	2.76	
7696.00	89.570	89.580	6982.19	1529.59	536.46	1500.18	0.74	
7785.00	89.510	88.940	6982.90	1618.49	537.61	1589.17	0.72	
7875.00	89.660	89.680	6983.55	1708.38	538.69	1679.16	0.84	



Actual Wellpath Report

HOOD 23N-22B-M AWP

Page 5 of 11



REFERENCE WELLPATH IDENTIFICATION

Operator	SRC ENERGY	Slot	SLOT#08 HOOD 23N-22B-M (565'FSL & 1122'FEL SEC.20)
Area	COLORADO	Well	HOOD 23N-22B-M
Field	WELD COUNTY (NAD83,TRUE NORTH)	Wellbore	HOOD 23N-22B-M AWB
Facility	SEC.20-T06N-R66W		

WELLPATH DATA (173 stations)

MD [ft]	Inclination [°]	Azimuth [°]	TVD [ft]	Vert Sect [ft]	North [ft]	East [ft]	DLS [°/100ft]	Comments
7965.00	89.660	91.700	6984.09	1798.14	537.61	1769.14	2.24	
8054.00	89.380	90.750	6984.83	1886.84	535.70	1858.12	1.11	
8144.00	89.420	88.030	6985.78	1976.72	536.66	1948.10	3.02	
8233.00	89.510	86.430	6986.61	2065.71	540.96	2036.99	1.80	
8323.00	89.350	92.100	6987.50	2155.57	542.12	2126.94	6.30	
8412.00	89.480	92.620	6988.41	2244.11	538.45	2215.86	0.60	
8502.00	89.510	95.320	6989.21	2333.35	532.22	2305.63	3.00	
8591.00	89.540	96.680	6989.94	2421.14	522.92	2394.14	1.53	
8681.00	89.260	97.730	6990.89	2509.59	511.63	2483.42	1.21	
8770.00	89.410	97.210	6991.92	2596.98	500.06	2571.66	0.61	
8859.00	89.480	92.300	6992.78	2685.04	492.69	2660.33	5.52	
8949.00	89.480	85.300	6993.60	2774.91	494.57	2750.25	7.78	
9039.00	89.570	83.170	6994.35	2864.83	503.61	2839.78	2.37	
9128.00	89.480	83.730	6995.08	2953.69	513.76	2928.20	0.64	
9218.00	89.450	86.600	6995.92	3043.65	521.35	3017.86	3.19	
9307.00	89.480	87.730	6996.76	3132.64	525.75	3106.75	1.27	
9396.00	89.450	87.240	6997.59	3221.63	529.65	3195.66	0.55	
9486.00	89.880	87.300	6998.11	3311.62	533.94	3285.56	0.48	
9575.00	89.600	88.860	6998.52	3400.58	536.92	3374.50	1.78	
9665.00	89.570	89.920	6999.17	3490.47	537.88	3464.49	1.18	
9754.00	89.540	90.540	6999.86	3579.29	537.52	3553.49	0.70	
9844.00	89.940	90.710	7000.27	3669.06	536.54	3643.48	0.48	
9933.00	89.940	89.930	7000.36	3757.87	536.05	3732.48	0.88	
10023.00	90.120	87.460	7000.31	3847.80	538.09	3822.45	2.75	
10112.00	90.000	88.270	7000.22	3936.78	541.41	3911.39	0.92	
10202.00	89.970	88.560	7000.24	4026.73	543.90	4001.35	0.32	
10291.00	90.150	86.430	7000.15	4115.71	547.79	4090.26	2.40	
10381.00	90.490	88.000	6999.65	4205.70	552.16	4180.15	1.78	
10470.00	90.340	93.190	6999.00	4294.45	551.24	4269.12	5.83	
10560.00	90.550	94.770	6998.30	4383.69	544.99	4358.89	1.77	



Actual Wellpath Report

HOOD 23N-22B-M AWP

Page 6 of 11



REFERENCE WELLPATH IDENTIFICATION

Operator	SRC ENERGY	Slot	SLOT#08 HOOD 23N-22B-M (565'FSL & 1122'FEL SEC.20)
Area	COLORADO	Well	HOOD 23N-22B-M
Field	WELD COUNTY (NAD83,TRUE NORTH)	Wellbore	HOOD 23N-22B-M AWB
Facility	SEC.20-T06N-R66W		

WELLPATH DATA (173 stations)

MD [ft]	Inclination [°]	Azimuth [°]	TVD [ft]	Vert Sect [ft]	North [ft]	East [ft]	DLS [°/100ft]	Comments
10649.00	90.460	95.470	6997.52	4471.70	537.05	4447.53	0.79	
10738.00	90.120	94.600	6997.07	4559.73	529.24	4536.19	1.05	
10828.00	89.910	89.460	6997.05	4649.29	526.05	4626.10	5.72	
10918.00	90.340	85.890	6996.85	4739.26	529.70	4716.01	4.00	
11007.00	90.520	85.860	6996.18	4828.25	536.10	4804.78	0.21	
11096.00	90.370	86.820	6995.49	4917.24	541.79	4893.59	1.09	
11186.00	90.490	86.730	6994.81	5007.24	546.85	4983.45	0.17	
11275.00	90.220	88.390	6994.26	5096.22	550.64	5072.36	1.89	
11365.00	90.280	91.040	6993.87	5186.08	551.08	5162.35	2.95	
11454.00	90.310	93.530	6993.41	5274.63	547.54	5251.27	2.80	
11544.00	89.820	91.900	6993.31	5364.11	543.27	5341.17	1.89	
11633.00	89.630	86.880	6993.74	5452.97	544.22	5430.14	5.64	
11723.00	89.970	85.090	6994.05	5542.96	550.52	5519.91	2.02	
11812.00	90.000	86.000	6994.07	5631.95	557.44	5608.64	1.02	
11902.00	90.090	87.450	6994.00	5721.94	562.58	5698.49	1.61	
11991.00	90.150	88.830	6993.82	5810.91	565.47	5787.44	1.55	
12081.00	90.090	89.940	6993.63	5900.80	566.43	5877.44	1.24	
12170.00	90.180	88.930	6993.42	5989.68	567.31	5966.43	1.14	
12260.00	89.630	88.890	6993.57	6079.61	569.02	6056.41	0.61	
12349.00	90.000	90.580	6993.86	6168.47	569.43	6145.41	1.94	
12439.00	90.220	92.550	6993.68	6258.12	566.97	6235.37	2.20	
12528.00	90.710	94.340	6992.96	6346.48	561.63	6324.20	2.09	
12618.00	89.750	96.660	6992.60	6435.38	553.00	6413.78	2.79	
12707.00	89.690	99.420	6993.03	6522.59	540.56	6501.90	3.10	
12797.00	89.660	98.620	6993.55	6610.47	526.45	6590.78	0.89	
12886.00	90.520	89.660	6993.41	6698.60	520.03	6679.46	10.11	
12976.00	89.750	90.860	6993.19	6788.42	519.62	6769.45	1.58	
13065.00	89.850	92.230	6993.50	6877.08	517.22	6858.42	1.54	
13155.00	89.880	89.280	6993.72	6966.83	516.03	6948.40	3.28	
13244.00	89.420	86.260	6994.26	7055.80	519.50	7037.32	3.43	



Actual Wellpath Report

HOOD 23N-22B-M AWP

Page 7 of 11



REFERENCE WELLPATH IDENTIFICATION

Operator	SRC ENERGY	Slot	SLOT#08 HOOD 23N-22B-M (565'FSL & 1122'FEL SEC.20)
Area	COLORADO	Well	HOOD 23N-22B-M
Field	WELD COUNTY (NAD83,TRUE NORTH)	Wellbore	HOOD 23N-22B-M AWB
Facility	SEC.20-T06N-R66W		

WELLPATH DATA (173 stations)

MD [ft]	Inclination [°]	Azimuth [°]	TVD [ft]	Vert Sect [ft]	North [ft]	East [ft]	DLS [°/100ft]	Comments
13334.00	89.720	85.920	6994.94	7145.79	525.63	7127.11	0.50	
13423.00	89.540	87.750	6995.51	7234.78	530.55	7215.97	2.07	
13513.00	89.540	88.540	6996.23	7324.75	533.46	7305.92	0.88	
13602.00	89.450	88.430	6997.02	7413.69	535.81	7394.88	0.16	
13691.00	89.600	86.850	6997.75	7502.67	539.48	7483.80	1.78	
13781.00	89.690	87.490	6998.31	7592.66	543.92	7573.69	0.72	
13870.00	89.600	88.400	6998.86	7681.64	547.11	7662.63	1.03	
13960.00	89.750	90.280	6999.37	7771.52	548.15	7752.62	2.10	
14050.00	89.820	92.200	6999.71	7861.22	546.20	7842.59	2.13	
14139.00	89.690	92.270	7000.09	7949.79	542.73	7931.52	0.17	
14229.00	89.780	91.950	7000.51	8039.36	539.42	8021.46	0.37	
14318.00	89.750	89.720	7000.87	8128.11	538.12	8110.44	2.51	
14408.00	89.380	89.570	7001.56	8217.98	538.68	8200.44	0.44	
14498.00	89.630	89.040	7002.33	8307.87	539.77	8290.43	0.65	
14587.00	89.320	89.790	7003.15	8396.76	540.68	8379.42	0.91	
14676.00	89.910	89.510	7003.75	8485.63	541.22	8468.42	0.73	
14766.00	89.630	90.340	7004.11	8575.47	541.34	8558.41	0.97	
14856.00	89.570	90.640	7004.74	8665.26	540.57	8648.41	0.34	
14945.00	89.320	89.530	7005.60	8754.09	540.44	8737.40	1.28	
15034.00	89.080	88.600	7006.84	8842.99	541.89	8826.38	1.08	
15124.00	89.720	87.370	7007.79	8932.96	545.05	8916.32	1.54	
15206.00	89.660	88.730	7008.23	9014.93	547.84	8998.27	1.66	LAST BHI MWD SURVEY (1003'FSL & 2582'FWL SEC.22)
15230.00	89.660	88.730	7008.37	9038.91	548.38	9022.26	0.00	PROJECTION TO BIT (1004'FSL & 2606'FWL SEC.22)



Actual Wellpath Report

HOOD 23N-22B-M AWP
Page 8 of 11



REFERENCE WELLPATH IDENTIFICATION

Operator	SRC ENERGY	Slot	SLOT#08 HOOD 23N-22B-M (565'FSL & 1122'FEL SEC.20)
Area	COLORADO	Well	HOOD 23N-22B-M
Field	WELD COUNTY (NAD83,TRUE NORTH)	Wellbore	HOOD 23N-22B-M AWB
Facility	SEC.20-T06N-R66W		

HOLE & CASING SECTIONS - Ref Wellbore: HOOD 23N-22B-M AWB Ref Wellpath: HOOD 23N-22B-M AWP

String/Diameter	Start MD [ft]	End MD [ft]	Interval [ft]	Start TVD [ft]	End TVD [ft]	Start N/S [ft]	Start E/W [ft]	End N/S [ft]	End E/W [ft]
13.5in Open Hole	25.00	1750.00	1725.00	25.00	1747.40	0.00	0.00	35.71	40.08
9.625in Casing Surface	25.00	1762.00	1737.00	25.00	1759.26	0.00	0.00	36.83	41.51
8.5in Open Hole	1750.00	15230.00	13480.00	1747.40	7008.37	35.71	40.08	548.38	9022.26



Actual Wellpath Report

HOOD 23N-22B-M AWP

Page 9 of 11



REFERENCE WELLPATH IDENTIFICATION

Operator	SRC ENERGY	Slot	SLOT#08 HOOD 23N-22B-M (565'FSL & 1122'FEL SEC.20)
Area	COLORADO	Well	HOOD 23N-22B-M
Field	WELD COUNTY (NAD83,TRUE NORTH)	Wellbore	HOOD 23N-22B-M AWB
Facility	SEC.20-T06N-R66W		

TARGETS

Name	TVD [ft]	North [ft]	East [ft]	Grid East [US ft]	Grid North [US ft]	Latitude	Longitude	Shape
SEC.21-T06N-R66W	21.00	200.07	-0.31	3195753.51	1414279.17	40°28'06.478"N	104°47'47.123"W	polygon
SEC.21-T06N-R66W 1/4 LINES	21.00	200.07	-0.31	3195753.51	1414279.17	40°28'06.478"N	104°47'47.123"W	polygon
SEC.22-T06N-R66W	21.00	200.07	-0.31	3195753.51	1414279.17	40°28'06.478"N	104°47'47.123"W	polygon
SEC.22-T06N-R66W 1/4 LINES	21.00	200.07	-0.31	3195753.51	1414279.17	40°28'06.478"N	104°47'47.123"W	polygon
HOOD 23N-22B-M TOP OF PROD ON PLAT (1006'FSL & 75'FWL SEC.21)	6949.00	457.65	1196.11	3196947.80	1414546.22	40°28'09.023"N	104°47'31.643"W	point
HOOD 23N-22B-M TOP OF PROD REV-1 (1073'FSL & 75'FWL SEC.21)	6949.00	525.00	1196.12	3196947.28	1414613.57	40°28'09.689"N	104°47'31.643"W	point
HOOD 23N-22B-M TOP OF PROD REV-2 (1073'FSL & 75'FWL SEC.21)	6968.84	525.00	1196.12	3196947.28	1414613.57	40°28'09.689"N	104°47'31.643"W	point
HOOD 23N-22B-M TOP OF PROD REV-3 (1073'FSL & 75'FWL SEC.21)	6978.80	525.00	1196.12	3196947.28	1414613.57	40°28'09.689"N	104°47'31.643"W	point
HOOD 23N-22B-M BHL REV-1 (996'FSL & 2607'FWL SEC.22)	6997.00	540.86	9023.17	3204773.66	1414691.52	40°28'09.829"N	104°45'50.371"W	point
HOOD 23N-22B-M BHL REV-2 (996'FSL & 2607'FWL SEC.22)	7006.52	540.86	9023.17	3204773.66	1414691.52	40°28'09.829"N	104°45'50.371"W	point
SEC.21&22-T06N-R66W 75' SOUTHERN SETBACKS	7209.00	200.07	-0.31	3195753.51	1414279.17	40°28'06.478"N	104°47'47.123"W	polygon



Actual Wellpath Report

HOOD 23N-22B-M AWP

Page 10 of 11



REFERENCE WELLPATH IDENTIFICATION

Operator	SRC ENERGY	Slot	SLOT#08 HOOD 23N-22B-M (565'FSL & 1122'FEL SEC.20)
Area	COLORADO	Well	HOOD 23N-22B-M
Field	WELD COUNTY (NAD83,TRUE NORTH)	Wellbore	HOOD 23N-22B-M AWB
Facility	SEC.20-T06N-R66W		

WELLPATH COMPOSITION - Ref Wellbore: HOOD 23N-22B-M AWB Ref Wellpath: HOOD 23N-22B-M AWP

Start MD [ft]	End MD [ft]	Positional Uncertainty Model	Log Name/Comment	Wellbore
25.00	1712.00	Custom BHI NaviTrak (Standard Rotating+Axial Corr) (Rockies 0.03Gt model)	BHI NAVITRAK 13.5" (STD ROTATING, AXIAL, ROCKIES GT)<108-1712>	HOOD 23N-22B-M AWB
1712.00	15206.00	Custom BHI AutoTrak Curve (IFR1, Short) (Rockies 0.03Gt model)	BHI ATC 8.5" (IFR, SHORT, ROCKIES GT)<1792-15206>	HOOD 23N-22B-M AWB
15206.00	15230.00	Blind Drilling (std)	Projection to bit	HOOD 23N-22B-M AWB



Actual Wellpath Report

HOOD 23N-22B-M AWP

Page 11 of 11



REFERENCE WELLPATH IDENTIFICATION			
Operator	SRC ENERGY	Slot	SLOT#08 HOOD 23N-22B-M (565'FSL & 1122'FEL SEC.20)
Area	COLORADO	Well	HOOD 23N-22B-M
Field	WELD COUNTY (NAD83,TRUE NORTH)	Wellbore	HOOD 23N-22B-M AWB
Facility	SEC.20-T06N-R66W		

WELLPATH COMMENTS				
MD [ft]	Inclination [°]	Azimuth [°]	TVD [ft]	Comment
7517.00	89.630	87.760	6980.89	LANDING POINT (1083'FSL & 200'FWL SEC.21)
15206.00	89.660	88.730	7008.23	LAST BHI MWD SURVEY (1003'FSL & 2582'FWL SEC.22)
15230.00	89.660	88.730	7008.37	PROJECTION TO BIT (1004'FSL & 2606'FWL SEC.22)