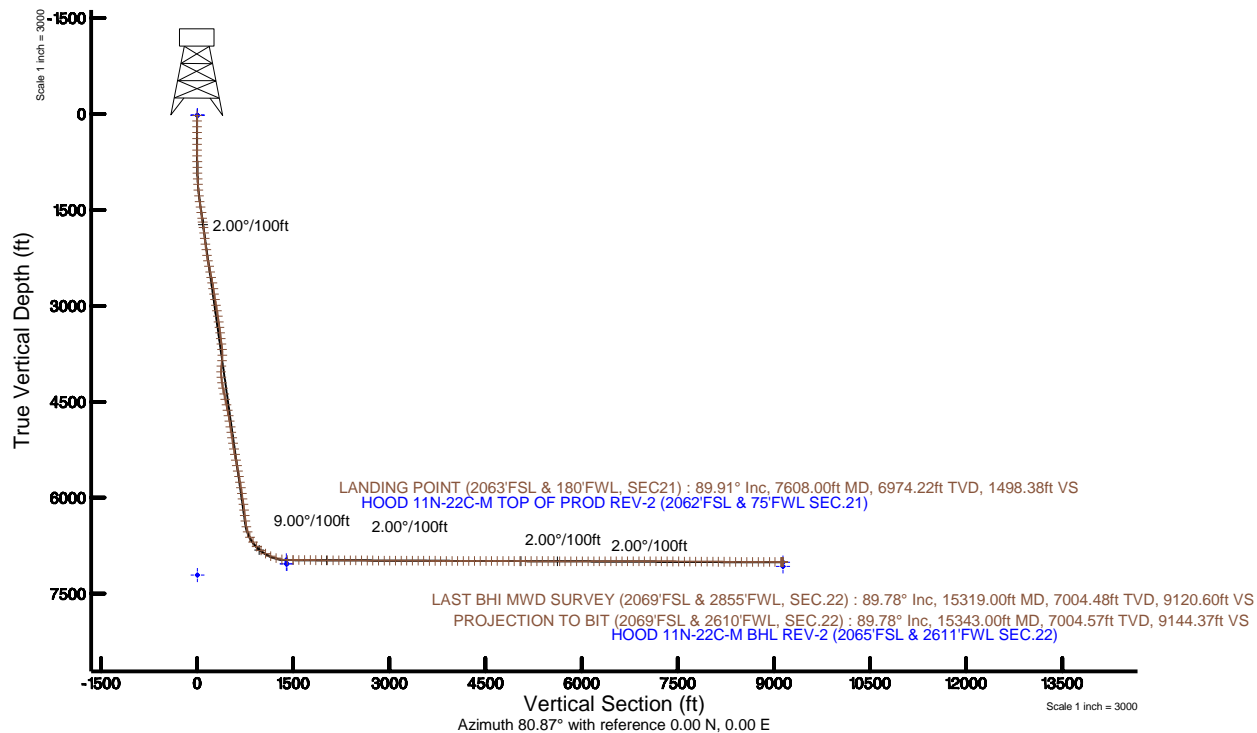
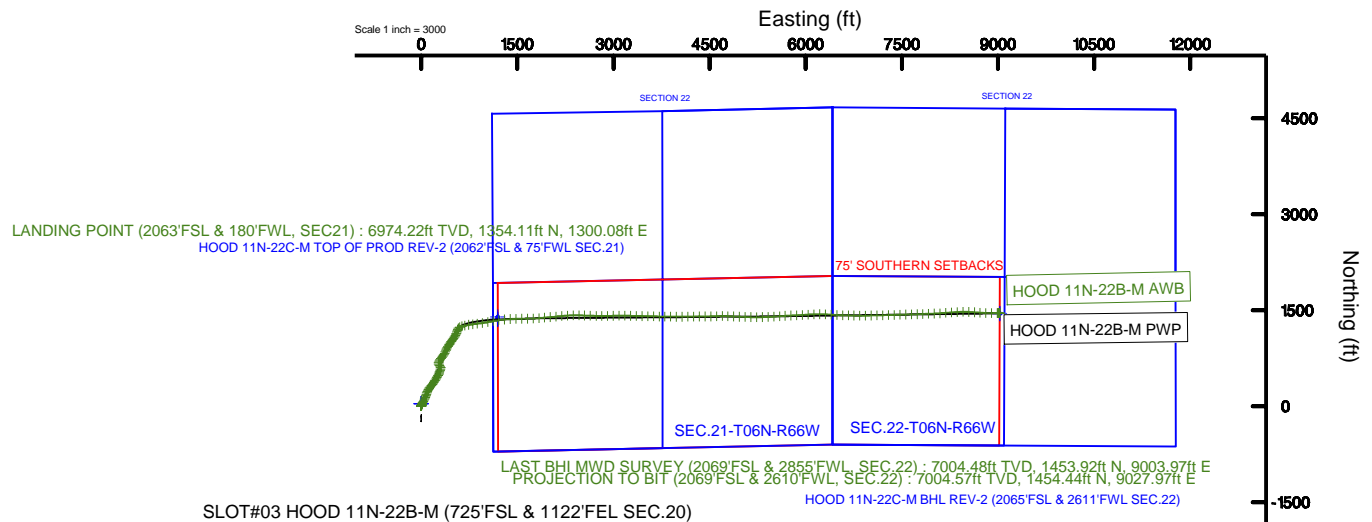


SRC ENERGY

Location: COLORADO Slot: SLOT#03 HOOD 11N-22B-M (725'FSL & 1122'FEL SEC.20)
Field: WELD COUNTY (NAD83, TRUE NORTH) Well: HOOD 11N-22B-M
Facility: SEC.20-T06N-R66W Wellbore: HOOD 11N-22B-M PWP

| | |
|--|--|
| Plot reference wellpath is HOOD 11N-22B-M REV-8.0 PWP | Grid System: NAD83 / Lambert Colorado SP, Northern Zone (501), US feet |
| True vertical depths are referenced to PRECISION 562 (25') (RKB) | * = Wellpath was transformed from a different geodetic datum |
| Measured depths are referenced to PRECISION 562 (25') (RKB) | North Reference: True north |
| PRECISION 562 (25') (RKB) to Mean Sea Level: 4759 feet | Scale: True distance |
| Mean Sea Level to Mud line (At Slot: SLOT#03 HOOD 11N-22B-M (725'FSL & 1122'FEL SEC.20)): 0 feet | Depths are in feet |
| Coordinates are in feet referenced to Slot | Created by: doddanna on 2017-06-30 |
| | Database: WA_Denver |



BGGM (1900.0 to 2018.0) Dip: 66.92° Field: 52443.8 nT
Magnetic North is 8.40 degrees East of True North (at 5/11/2017)

To correct azimuth from Magnetic to True add 8.40 degrees

Actual Wellpath Report

HOOD 11N-22B-M AWP

Page 1 of 11



REFERENCE WELLPATH IDENTIFICATION

| | | | |
|----------|--------------------------------|----------|--|
| Operator | SRC ENERGY | Slot | SLOT#03 HOOD 11N-22B-M (725'FSL & 1122'FEL SEC.20) |
| Area | COLORADO | Well | HOOD 11N-22B-M |
| Field | WELD COUNTY (NAD83,TRUE NORTH) | Wellbore | HOOD 11N-22B-M AWB |
| Facility | SEC.20-T06N-R66W | | |

REPORT SETUP INFORMATION

| | | | |
|---------------------|---|----------------------|----------------------------------|
| Projection System | NAD83 / Lambert Colorado SP, Northern Zone (501), US feet | Software System | WellArchitect® 5.0 |
| North Reference | True | User | Doddanna |
| Scale | 0.999964 | Report Generated | 6/30/2017 at 12:41:24 PM |
| Convergence at slot | 0.46° East | Database/Source file | WA_Denver/HOOD_11N-22B-M_AWP.xml |

WELLPATH LOCATION

| | Local coordinates | | Grid coordinates | | Geographic coordinates | |
|-----------------------|-------------------|----------|------------------|-----------------|------------------------|-----------------|
| | North[ft] | East[ft] | Easting[US ft] | Northing[US ft] | Latitude | Longitude |
| Slot Location | -40.07 | -0.00 | 3195753.83 | 1414239.09 | 40°28'06.082"N | 104°47'47.123"W |
| Facility Reference Pt | | | 3195753.51 | 1414279.17 | 40°28'06.478"N | 104°47'47.123"W |
| Field Reference Pt | | | 3171284.48 | 1426358.81 | 40°30'07.643"N | 104°53'02.634"W |

WELLPATH DATUM

| | | | |
|--------------------------|---------------------------|--|-------------------|
| Calculation method | Minimum curvature | PRECISION 562 (25') (RKB) to Facility Vertical Datum | 4759.00ft |
| Horizontal Reference Pt | Slot | PRECISION 562 (25') (RKB) to Mean Sea Level | 4759.00ft |
| Vertical Reference Pt | PRECISION 562 (25') (RKB) | PRECISION 562 (25') (RKB) to Mud Line at Slot (SLOT#03 HOOD 11N-22B-M (725'FSL & 1122'FEL SEC.20)) | 4759.00ft |
| MD Reference Pt | PRECISION 562 (25') (RKB) | Section Origin | N 0.00, E 0.00 ft |
| Field Vertical Reference | Mean Sea Level | Section Azimuth | 80.87° |

Actual Wellpath Report

HOOD 11N-22B-M AWP

Page 2 of 11



REFERENCE WELLPATH IDENTIFICATION

| | | | |
|----------|--------------------------------|----------|--|
| Operator | SRC ENERGY | Slot | SLOT#03 HOOD 11N-22B-M (725'FSL & 1122'FEL SEC.20) |
| Area | COLORADO | Well | HOOD 11N-22B-M |
| Field | WELD COUNTY (NAD83,TRUE NORTH) | Wellbore | HOOD 11N-22B-M AWB |
| Facility | SEC.20-T06N-R66W | | |

WELLPATH DATA (175 stations) † = interpolated/extrapolated station

| MD [ft] | Inclination [°] | Azimuth [°] | TVD [ft] | Vert Sect [ft] | North [ft] | East [ft] | DLS [°/100ft] | Comments |
|------------|--------------------|----------------|-------------|-------------------|---------------|--------------|------------------|----------|
| 0.00† | 0.000 | 32.120 | 0.00 | 0.00 | 0.00 | 0.00 | 0.00 | |
| 25.00 | 0.000 | 32.120 | 25.00 | 0.00 | 0.00 | 0.00 | 0.00 | |
| 109.00 | 0.040 | 32.120 | 109.00 | 0.02 | 0.02 | 0.02 | 0.05 | |
| 199.00 | 0.100 | 66.000 | 199.00 | 0.12 | 0.08 | 0.10 | 0.08 | |
| 291.00 | 0.130 | 73.330 | 291.00 | 0.30 | 0.15 | 0.28 | 0.04 | |
| 384.00 | 0.370 | 25.970 | 384.00 | 0.57 | 0.45 | 0.51 | 0.32 | |
| 474.00 | 0.470 | 41.420 | 474.00 | 1.03 | 0.98 | 0.88 | 0.17 | |
| 564.00 | 0.130 | 56.540 | 564.00 | 1.40 | 1.32 | 1.21 | 0.38 | |
| 654.00 | 0.420 | 49.600 | 653.99 | 1.78 | 1.59 | 1.55 | 0.32 | |
| 744.00 | 1.520 | 28.540 | 743.98 | 2.79 | 2.85 | 2.37 | 1.26 | |
| 834.00 | 2.490 | 15.360 | 833.92 | 4.33 | 5.78 | 3.46 | 1.19 | |
| 924.00 | 3.280 | 11.770 | 923.81 | 6.06 | 10.19 | 4.50 | 0.90 | |
| 1014.00 | 5.490 | 17.250 | 1013.54 | 8.89 | 16.82 | 6.30 | 2.50 | |
| 1104.00 | 7.720 | 21.320 | 1102.94 | 13.87 | 26.57 | 9.78 | 2.53 | |
| 1194.00 | 9.170 | 25.160 | 1191.96 | 20.97 | 38.69 | 15.02 | 1.73 | |
| 1284.00 | 10.170 | 31.280 | 1280.68 | 30.16 | 51.97 | 22.20 | 1.59 | |
| 1374.00 | 12.710 | 30.020 | 1368.89 | 41.56 | 67.34 | 31.28 | 2.84 | |
| 1464.00 | 14.320 | 26.680 | 1456.39 | 54.33 | 85.86 | 41.23 | 1.99 | |
| 1554.00 | 15.240 | 24.520 | 1543.42 | 67.39 | 106.56 | 51.14 | 1.19 | |
| 1644.00 | 14.480 | 22.440 | 1630.41 | 79.84 | 127.73 | 60.34 | 1.03 | |
| 1707.00 | 15.070 | 20.740 | 1691.32 | 88.04 | 142.67 | 66.25 | 1.16 | |
| 1794.00 | 15.350 | 21.930 | 1775.28 | 99.61 | 163.93 | 74.55 | 0.48 | |
| 1883.00 | 14.150 | 17.620 | 1861.34 | 110.58 | 185.22 | 82.25 | 1.83 | |
| 1973.00 | 14.040 | 19.160 | 1948.63 | 120.71 | 206.02 | 89.16 | 0.43 | |
| 2062.00 | 14.030 | 22.480 | 2034.98 | 131.48 | 226.19 | 96.83 | 0.90 | |
| 2152.00 | 14.060 | 24.240 | 2122.29 | 143.21 | 246.23 | 105.49 | 0.48 | |
| 2242.00 | 13.970 | 30.740 | 2209.62 | 156.18 | 265.54 | 115.53 | 1.75 | |
| 2331.00 | 14.190 | 35.790 | 2295.94 | 170.77 | 283.62 | 127.40 | 1.40 | |
| 2420.00 | 14.100 | 40.660 | 2382.25 | 186.75 | 300.70 | 140.85 | 1.34 | |
| 2510.00 | 14.040 | 41.560 | 2469.55 | 203.57 | 317.18 | 155.23 | 0.25 | |

Actual Wellpath Report

HOOD 11N-22B-M AWP

Page 3 of 11



REFERENCE WELLPATH IDENTIFICATION

| | | | |
|----------|--------------------------------|----------|--|
| Operator | SRC ENERGY | Slot | SLOT#03 HOOD 11N-22B-M (725'FSL & 1122'FEL SEC.20) |
| Area | COLORADO | Well | HOOD 11N-22B-M |
| Field | WELD COUNTY (NAD83,TRUE NORTH) | Wellbore | HOOD 11N-22B-M AWB |
| Facility | SEC.20-T06N-R66W | | |

WELLPATH DATA (175 stations)

| MD [ft] | Inclination [°] | Azimuth [°] | TVD [ft] | Vert Sect [ft] | North [ft] | East [ft] | DLS [°/100ft] | Comments |
|------------|--------------------|----------------|-------------|-------------------|---------------|--------------|------------------|----------|
| 2599.00 | 14.210 | 43.780 | 2555.86 | 220.64 | 333.15 | 169.95 | 0.64 | |
| 2689.00 | 14.080 | 40.400 | 2643.13 | 237.77 | 349.46 | 184.69 | 0.93 | |
| 2778.00 | 14.260 | 29.470 | 2729.44 | 252.85 | 367.25 | 197.10 | 3.01 | |
| 2868.00 | 13.670 | 29.510 | 2816.78 | 266.41 | 386.16 | 207.79 | 0.66 | |
| 2957.00 | 14.180 | 33.810 | 2903.17 | 280.40 | 404.37 | 219.04 | 1.30 | |
| 3047.00 | 14.180 | 28.890 | 2990.43 | 294.70 | 423.18 | 230.50 | 1.34 | |
| 3136.00 | 13.840 | 32.370 | 3076.78 | 308.46 | 441.71 | 241.46 | 1.02 | |
| 3225.00 | 14.200 | 33.150 | 3163.13 | 322.86 | 459.84 | 253.13 | 0.46 | |
| 3314.00 | 14.140 | 27.760 | 3249.43 | 336.73 | 478.61 | 264.17 | 1.48 | |
| 3403.00 | 14.190 | 23.040 | 3335.72 | 349.06 | 498.26 | 273.50 | 1.30 | |
| 3493.00 | 14.030 | 17.920 | 3423.01 | 359.89 | 518.80 | 281.17 | 1.40 | |
| 3582.00 | 13.660 | 18.070 | 3509.42 | 369.60 | 539.05 | 287.75 | 0.42 | |
| 3672.00 | 14.350 | 24.030 | 3596.75 | 380.56 | 559.34 | 295.59 | 1.78 | |
| 3761.00 | 14.490 | 15.540 | 3682.96 | 391.24 | 580.15 | 303.07 | 2.38 | |
| 3851.00 | 14.790 | 349.840 | 3770.13 | 395.74 | 602.32 | 304.06 | 7.17 | |
| 3940.00 | 14.510 | 325.220 | 3856.32 | 390.70 | 622.68 | 295.69 | 6.95 | |
| 4029.00 | 14.210 | 324.540 | 3942.54 | 381.03 | 640.74 | 282.99 | 0.39 | |
| 4119.00 | 14.110 | 348.730 | 4029.88 | 375.71 | 660.51 | 274.43 | 6.53 | |
| 4208.00 | 14.310 | 9.800 | 4116.21 | 378.87 | 682.00 | 274.18 | 5.78 | |
| 4298.00 | 15.160 | 29.220 | 4203.31 | 389.79 | 703.25 | 281.82 | 5.54 | |
| 4387.00 | 16.110 | 34.240 | 4289.02 | 405.49 | 723.61 | 294.45 | 1.86 | |
| 4477.00 | 16.050 | 37.110 | 4375.50 | 423.05 | 743.86 | 308.99 | 0.89 | |
| 4566.00 | 16.180 | 39.050 | 4461.00 | 441.17 | 763.30 | 324.22 | 0.62 | |
| 4656.00 | 16.070 | 36.010 | 4547.46 | 459.35 | 783.12 | 339.44 | 0.95 | |
| 4745.00 | 16.500 | 31.080 | 4632.90 | 476.24 | 803.91 | 353.21 | 1.63 | |
| 4834.00 | 16.520 | 27.310 | 4718.23 | 491.91 | 825.97 | 365.54 | 1.20 | |
| 4924.00 | 16.620 | 26.540 | 4804.49 | 507.02 | 848.86 | 377.16 | 0.27 | |
| 5014.00 | 16.670 | 24.070 | 4890.72 | 521.59 | 872.16 | 388.18 | 0.79 | |
| 5103.00 | 13.710 | 23.680 | 4976.60 | 534.29 | 893.48 | 397.62 | 3.33 | |
| 5193.00 | 14.760 | 28.410 | 5063.84 | 547.06 | 913.33 | 407.36 | 1.74 | |

Actual Wellpath Report

HOOD 11N-22B-M AWP

Page 4 of 11



REFERENCE WELLPATH IDENTIFICATION

| | | | |
|----------|--------------------------------|----------|--|
| Operator | SRC ENERGY | Slot | SLOT#03 HOOD 11N-22B-M (725'FSL & 1122'FEL SEC.20) |
| Area | COLORADO | Well | HOOD 11N-22B-M |
| Field | WELD COUNTY (NAD83,TRUE NORTH) | Wellbore | HOOD 11N-22B-M AWB |
| Facility | SEC.20-T06N-R66W | | |

WELLPATH DATA (175 stations)

| MD [ft] | Inclination [°] | Azimuth [°] | TVD [ft] | Vert Sect [ft] | North [ft] | East [ft] | DLS [°/100ft] | Comments |
|------------|--------------------|----------------|-------------|-------------------|---------------|--------------|------------------|---|
| 5282.00 | 14.480 | 31.290 | 5149.96 | 561.18 | 932.81 | 418.54 | 0.88 | |
| 5372.00 | 14.660 | 32.960 | 5237.07 | 576.11 | 951.98 | 430.58 | 0.51 | |
| 5461.00 | 14.290 | 35.570 | 5323.24 | 591.38 | 970.37 | 443.09 | 0.84 | |
| 5551.00 | 14.420 | 36.290 | 5410.43 | 607.18 | 988.43 | 456.19 | 0.25 | |
| 5640.00 | 14.110 | 29.610 | 5496.69 | 621.86 | 1006.80 | 468.11 | 1.88 | |
| 5730.00 | 14.370 | 36.160 | 5583.93 | 636.66 | 1025.35 | 480.12 | 1.81 | |
| 5819.00 | 14.360 | 39.350 | 5670.15 | 652.77 | 1042.81 | 493.63 | 0.89 | |
| 5909.00 | 14.030 | 36.240 | 5757.41 | 668.89 | 1060.24 | 507.16 | 0.92 | |
| 5998.00 | 14.050 | 31.430 | 5843.75 | 683.59 | 1078.16 | 519.17 | 1.31 | |
| 6088.00 | 13.990 | 28.060 | 5931.07 | 697.27 | 1097.08 | 529.98 | 0.91 | |
| 6177.00 | 14.130 | 26.250 | 6017.40 | 710.06 | 1116.31 | 539.85 | 0.52 | |
| 6267.00 | 14.280 | 23.590 | 6104.65 | 722.42 | 1136.34 | 549.15 | 0.74 | |
| 6356.00 | 14.110 | 22.660 | 6190.94 | 734.07 | 1156.41 | 557.72 | 0.32 | |
| 6446.00 | 14.380 | 20.470 | 6278.17 | 745.36 | 1177.00 | 565.86 | 0.67 | |
| 6535.00 | 14.020 | 15.910 | 6364.45 | 755.38 | 1197.73 | 572.68 | 1.32 | |
| 6624.00 | 15.320 | 33.640 | 6450.59 | 767.94 | 1217.89 | 582.15 | 5.23 | |
| 6713.00 | 20.680 | 59.590 | 6535.34 | 790.62 | 1235.68 | 602.26 | 10.70 | |
| 6803.00 | 27.650 | 75.070 | 6617.48 | 826.28 | 1249.13 | 636.22 | 10.41 | |
| 6892.00 | 36.090 | 78.300 | 6693.00 | 873.10 | 1259.79 | 681.93 | 9.67 | |
| 6982.00 | 43.750 | 79.690 | 6761.98 | 930.78 | 1270.75 | 738.59 | 8.57 | |
| 7072.00 | 51.110 | 83.200 | 6822.83 | 996.99 | 1280.48 | 804.09 | 8.67 | |
| 7161.00 | 58.720 | 83.280 | 6873.95 | 1069.70 | 1289.04 | 876.36 | 8.55 | |
| 7251.00 | 68.350 | 82.300 | 6914.01 | 1150.13 | 1299.17 | 956.19 | 10.74 | |
| 7340.00 | 71.680 | 79.430 | 6944.43 | 1233.75 | 1312.47 | 1038.74 | 4.81 | |
| 7430.00 | 80.170 | 78.740 | 6966.30 | 1320.92 | 1328.99 | 1124.38 | 9.46 | |
| 7519.00 | 89.850 | 82.100 | 6974.03 | 1409.46 | 1343.71 | 1211.69 | 11.51 | |
| 7608.00 | 89.910 | 84.480 | 6974.22 | 1498.38 | 1354.11 | 1300.08 | 2.68 | LANDING POINT (2063'FSL & 180'FWL, SEC21) |
| 7698.00 | 90.030 | 86.670 | 6974.27 | 1588.07 | 1361.05 | 1389.80 | 2.44 | |
| 7787.00 | 89.750 | 88.860 | 6974.44 | 1676.42 | 1364.52 | 1478.73 | 2.48 | |
| 7877.00 | 89.510 | 89.370 | 6975.02 | 1765.49 | 1365.91 | 1568.72 | 0.63 | |

Actual Wellpath Report

HOOD 11N-22B-M AWP

Page 5 of 11



REFERENCE WELLPATH IDENTIFICATION

| | | | |
|----------|--------------------------------|----------|--|
| Operator | SRC ENERGY | Slot | SLOT#03 HOOD 11N-22B-M (725'FSL & 1122'FEL SEC.20) |
| Area | COLORADO | Well | HOOD 11N-22B-M |
| Field | WELD COUNTY (NAD83,TRUE NORTH) | Wellbore | HOOD 11N-22B-M AWB |
| Facility | SEC.20-T06N-R66W | | |

WELLPATH DATA (175 stations)

| MD [ft] | Inclination [°] | Azimuth [°] | TVD [ft] | Vert Sect [ft] | North [ft] | East [ft] | DLS [°/100ft] | Comments |
|------------|--------------------|----------------|-------------|-------------------|---------------|--------------|------------------|----------|
| 7967.00 | 89.630 | 89.560 | 6975.69 | 1854.48 | 1366.75 | 1658.71 | 0.25 | |
| 8056.00 | 89.480 | 87.050 | 6976.39 | 1942.72 | 1369.39 | 1747.66 | 2.83 | |
| 8146.00 | 89.380 | 85.000 | 6977.28 | 2032.35 | 1375.62 | 1837.44 | 2.28 | |
| 8235.00 | 89.630 | 84.730 | 6978.05 | 2121.13 | 1383.59 | 1926.07 | 0.41 | |
| 8325.00 | 89.690 | 85.480 | 6978.58 | 2210.88 | 1391.27 | 2015.74 | 0.84 | |
| 8414.00 | 89.850 | 84.940 | 6978.94 | 2299.63 | 1398.70 | 2104.43 | 0.63 | |
| 8504.00 | 89.780 | 83.710 | 6979.23 | 2389.46 | 1407.60 | 2193.99 | 1.37 | |
| 8593.00 | 89.630 | 85.870 | 6979.69 | 2478.25 | 1415.68 | 2282.61 | 2.43 | |
| 8683.00 | 89.690 | 89.500 | 6980.22 | 2567.60 | 1419.32 | 2372.52 | 4.03 | |
| 8772.00 | 89.570 | 91.700 | 6980.80 | 2655.31 | 1418.39 | 2461.51 | 2.48 | |
| 8861.00 | 89.630 | 91.560 | 6981.42 | 2742.74 | 1415.85 | 2550.47 | 0.17 | |
| 8951.00 | 89.820 | 91.910 | 6981.85 | 2831.13 | 1413.13 | 2640.43 | 0.44 | |
| 9041.00 | 89.940 | 91.150 | 6982.04 | 2919.58 | 1410.73 | 2730.40 | 0.85 | |
| 9130.00 | 89.880 | 90.100 | 6982.18 | 3007.29 | 1409.75 | 2819.39 | 1.18 | |
| 9219.00 | 90.060 | 89.170 | 6982.23 | 3095.25 | 1410.32 | 2908.39 | 1.06 | |
| 9309.00 | 89.630 | 88.760 | 6982.47 | 3184.35 | 1411.95 | 2998.37 | 0.66 | |
| 9398.00 | 89.720 | 89.270 | 6982.98 | 3272.46 | 1413.48 | 3087.36 | 0.58 | |
| 9488.00 | 89.570 | 90.660 | 6983.53 | 3361.32 | 1413.53 | 3177.36 | 1.55 | |
| 9577.00 | 89.480 | 91.750 | 6984.27 | 3448.87 | 1411.66 | 3266.33 | 1.23 | |
| 9667.00 | 89.290 | 91.560 | 6985.24 | 3537.28 | 1409.06 | 3356.29 | 0.30 | |
| 9756.00 | 89.780 | 91.430 | 6985.96 | 3624.75 | 1406.74 | 3445.25 | 0.57 | |
| 9846.00 | 89.660 | 91.080 | 6986.40 | 3713.28 | 1404.77 | 3535.23 | 0.41 | |
| 9935.00 | 89.880 | 91.380 | 6986.76 | 3800.83 | 1402.86 | 3624.21 | 0.42 | |
| 10025.00 | 89.750 | 91.420 | 6987.05 | 3889.31 | 1400.66 | 3714.18 | 0.15 | |
| 10114.00 | 89.780 | 90.930 | 6987.41 | 3976.88 | 1398.83 | 3803.16 | 0.55 | |
| 10203.00 | 89.720 | 90.930 | 6987.80 | 4064.51 | 1397.39 | 3892.15 | 0.07 | |
| 10293.00 | 89.720 | 89.810 | 6988.24 | 4153.28 | 1396.81 | 3982.15 | 1.24 | |
| 10382.00 | 89.820 | 90.160 | 6988.60 | 4241.15 | 1396.83 | 4071.15 | 0.41 | |
| 10472.00 | 89.780 | 87.980 | 6988.91 | 4330.23 | 1398.29 | 4161.13 | 2.42 | |
| 10562.00 | 90.180 | 88.880 | 6988.94 | 4419.44 | 1400.76 | 4251.09 | 1.09 | |

Actual Wellpath Report

HOOD 11N-22B-M AWP

Page 6 of 11



REFERENCE WELLPATH IDENTIFICATION

| | | | |
|----------|--------------------------------|----------|--|
| Operator | SRC ENERGY | Slot | SLOT#03 HOOD 11N-22B-M (725'FSL & 1122'FEL SEC.20) |
| Area | COLORADO | Well | HOOD 11N-22B-M |
| Field | WELD COUNTY (NAD83,TRUE NORTH) | Wellbore | HOOD 11N-22B-M AWB |
| Facility | SEC.20-T06N-R66W | | |

WELLPATH DATA (175 stations)

| MD [ft] | Inclination [°] | Azimuth [°] | TVD [ft] | Vert Sect [ft] | North [ft] | East [ft] | DLS [°/100ft] | Comments |
|------------|--------------------|----------------|-------------|-------------------|---------------|--------------|------------------|----------|
| 10651.00 | 89.850 | 90.170 | 6988.92 | 4507.43 | 1401.50 | 4340.09 | 1.50 | |
| 10740.00 | 89.910 | 90.660 | 6989.11 | 4595.20 | 1400.85 | 4429.08 | 0.55 | |
| 10830.00 | 89.820 | 88.010 | 6989.32 | 4684.21 | 1401.90 | 4519.07 | 2.95 | |
| 10919.00 | 89.750 | 87.670 | 6989.65 | 4772.55 | 1405.25 | 4608.01 | 0.39 | |
| 11009.00 | 89.910 | 89.470 | 6989.92 | 4861.74 | 1407.50 | 4697.97 | 2.01 | |
| 11098.00 | 89.820 | 92.940 | 6990.13 | 4949.28 | 1405.62 | 4786.94 | 3.90 | |
| 11188.00 | 89.850 | 92.790 | 6990.39 | 5037.32 | 1401.13 | 4876.83 | 0.17 | |
| 11277.00 | 89.780 | 92.450 | 6990.68 | 5124.45 | 1397.06 | 4965.73 | 0.39 | |
| 11367.00 | 89.850 | 92.150 | 6990.97 | 5212.67 | 1393.45 | 5055.66 | 0.34 | |
| 11456.00 | 89.970 | 90.650 | 6991.11 | 5300.17 | 1391.27 | 5144.63 | 1.69 | |
| 11546.00 | 89.850 | 90.080 | 6991.25 | 5388.94 | 1390.70 | 5234.63 | 0.65 | |
| 11635.00 | 90.090 | 88.770 | 6991.29 | 5476.95 | 1391.59 | 5323.62 | 1.50 | |
| 11724.00 | 90.030 | 87.330 | 6991.20 | 5565.25 | 1394.62 | 5412.57 | 1.62 | |
| 11814.00 | 89.630 | 86.590 | 6991.47 | 5654.74 | 1399.39 | 5502.44 | 0.93 | |
| 11903.00 | 89.660 | 85.940 | 6992.02 | 5743.34 | 1405.19 | 5591.25 | 0.73 | |
| 11993.00 | 89.850 | 86.080 | 6992.40 | 5832.98 | 1411.45 | 5681.03 | 0.26 | |
| 12083.00 | 89.480 | 87.600 | 6992.93 | 5922.49 | 1416.41 | 5770.89 | 1.74 | |
| 12172.00 | 89.600 | 88.740 | 6993.65 | 6010.76 | 1419.26 | 5859.84 | 1.29 | |
| 12262.00 | 89.600 | 85.050 | 6994.27 | 6100.25 | 1424.13 | 5949.69 | 4.10 | |
| 12351.00 | 90.120 | 86.440 | 6994.49 | 6188.93 | 1430.73 | 6038.44 | 1.67 | |
| 12441.00 | 90.250 | 88.170 | 6994.20 | 6278.36 | 1434.96 | 6128.34 | 1.93 | |
| 12530.00 | 90.000 | 90.520 | 6994.01 | 6366.38 | 1435.98 | 6217.33 | 2.66 | |
| 12620.00 | 89.940 | 92.800 | 6994.05 | 6454.78 | 1433.37 | 6307.28 | 2.53 | |
| 12709.00 | 90.180 | 93.330 | 6993.96 | 6541.78 | 1428.62 | 6396.16 | 0.65 | |
| 12799.00 | 90.280 | 93.210 | 6993.60 | 6629.68 | 1423.48 | 6486.01 | 0.17 | |
| 12888.00 | 90.120 | 91.890 | 6993.29 | 6716.83 | 1419.52 | 6574.92 | 1.49 | |
| 12978.00 | 90.220 | 90.870 | 6993.02 | 6805.32 | 1417.36 | 6664.89 | 1.14 | |
| 13067.00 | 89.910 | 90.400 | 6992.92 | 6893.03 | 1416.37 | 6753.88 | 0.63 | |
| 13157.00 | 89.600 | 90.670 | 6993.31 | 6981.76 | 1415.53 | 6843.88 | 0.46 | |
| 13246.00 | 89.630 | 89.300 | 6993.90 | 7069.63 | 1415.55 | 6932.87 | 1.54 | |

Actual Wellpath Report

HOOD 11N-22B-M AWP

Page 7 of 11



REFERENCE WELLPATH IDENTIFICATION

| | | | |
|----------|--------------------------------|----------|--|
| Operator | SRC ENERGY | Slot | SLOT#03 HOOD 11N-22B-M (725'FSL & 1122'FEL SEC.20) |
| Area | COLORADO | Well | HOOD 11N-22B-M |
| Field | WELD COUNTY (NAD83,TRUE NORTH) | Wellbore | HOOD 11N-22B-M AWP |
| Facility | SEC.20-T06N-R66W | | |

WELLPATH DATA (175 stations)

| MD [ft] | Inclination [°] | Azimuth [°] | TVD [ft] | Vert Sect [ft] | North [ft] | East [ft] | DLS [°/100ft] | Comments |
|------------|--------------------|----------------|-------------|-------------------|---------------|--------------|------------------|---|
| 13335.00 | 89.630 | 88.970 | 6994.48 | 7157.70 | 1416.90 | 7021.86 | 0.37 | |
| 13425.00 | 89.880 | 88.880 | 6994.86 | 7246.82 | 1418.58 | 7111.85 | 0.30 | |
| 13514.00 | 89.820 | 88.380 | 6995.10 | 7335.00 | 1420.71 | 7200.82 | 0.57 | |
| 13604.00 | 89.720 | 88.350 | 6995.46 | 7424.23 | 1423.28 | 7290.78 | 0.12 | |
| 13693.00 | 89.600 | 88.470 | 6995.99 | 7512.46 | 1425.75 | 7379.75 | 0.19 | |
| 13783.00 | 89.570 | 88.310 | 6996.64 | 7601.69 | 1428.28 | 7469.71 | 0.18 | |
| 13872.00 | 89.510 | 88.150 | 6997.35 | 7689.95 | 1431.03 | 7558.66 | 0.19 | |
| 13962.00 | 89.450 | 88.760 | 6998.17 | 7779.16 | 1433.45 | 7648.63 | 0.68 | |
| 14052.00 | 89.630 | 87.930 | 6998.89 | 7868.39 | 1436.05 | 7738.58 | 0.94 | |
| 14141.00 | 89.940 | 86.700 | 6999.23 | 7956.83 | 1440.22 | 7827.48 | 1.43 | |
| 14231.00 | 89.630 | 88.490 | 6999.56 | 8046.21 | 1444.00 | 7917.40 | 2.02 | |
| 14320.00 | 89.510 | 88.390 | 7000.23 | 8134.43 | 1446.42 | 8006.37 | 0.18 | |
| 14410.00 | 89.690 | 86.030 | 7000.86 | 8223.87 | 1450.80 | 8096.25 | 2.63 | |
| 14499.00 | 89.660 | 85.590 | 7001.36 | 8312.54 | 1457.30 | 8185.01 | 0.50 | |
| 14589.00 | 90.120 | 86.270 | 7001.54 | 8402.19 | 1463.69 | 8274.78 | 0.91 | |
| 14678.00 | 89.940 | 86.570 | 7001.49 | 8490.77 | 1469.25 | 8363.61 | 0.39 | |
| 14768.00 | 89.820 | 89.090 | 7001.68 | 8580.10 | 1472.66 | 8453.54 | 2.80 | |
| 14857.00 | 89.880 | 92.460 | 7001.91 | 8667.76 | 1471.45 | 8542.52 | 3.79 | |
| 14947.00 | 89.850 | 94.450 | 7002.12 | 8755.60 | 1466.03 | 8632.35 | 2.21 | |
| 15036.00 | 89.690 | 93.770 | 7002.48 | 8842.23 | 1459.65 | 8721.12 | 0.78 | |
| 15126.00 | 89.540 | 91.830 | 7003.09 | 8930.29 | 1455.25 | 8811.00 | 2.16 | |
| 15215.00 | 89.570 | 90.560 | 7003.78 | 9017.84 | 1453.40 | 8899.98 | 1.43 | |
| 15304.00 | 89.630 | 89.120 | 7004.40 | 9105.75 | 1453.65 | 8988.97 | 1.62 | |
| 15319.00 | 89.780 | 88.760 | 7004.48 | 9120.60 | 1453.92 | 9003.97 | 2.60 | LAST BHI MWD SURVEY (2069'FSL & 2855'FWL, SEC.22) |
| 15343.00 | 89.780 | 88.760 | 7004.57 | 9144.37 | 1454.44 | 9027.97 | 0.00 | PROJECTION TO BIT (2069'FSL & 2610'FWL, SEC.22) |

Actual Wellpath Report

HOOD 11N-22B-M AWP

Page 8 of 11



REFERENCE WELLPATH IDENTIFICATION

| | | | |
|----------|--------------------------------|----------|--|
| Operator | SRC ENERGY | Slot | SLOT#03 HOOD 11N-22B-M (725'FSL & 1122'FEL SEC.20) |
| Area | COLORADO | Well | HOOD 11N-22B-M |
| Field | WELD COUNTY (NAD83,TRUE NORTH) | Wellbore | HOOD 11N-22B-M AWB |
| Facility | SEC.20-T06N-R66W | | |

HOLE & CASING SECTIONS - Ref Wellbore: HOOD 11N-22B-M AWB Ref Wellpath: HOOD 11N-22B-M AWP

| String/Diameter | Start MD [ft] | End MD [ft] | Interval [ft] | Start TVD [ft] | End TVD [ft] | Start N/S [ft] | Start E/W [ft] | End N/S [ft] | End E/W [ft] |
|-------------------|------------------|----------------|------------------|-------------------|-----------------|-------------------|-------------------|-----------------|-----------------|
| 13.5in Open Hole | 25.00 | 1757.00 | 1732.00 | 25.00 | 1739.59 | 0.00 | 0.00 | 154.86 | 70.95 |
| 9.625in Open Hole | 25.00 | 1757.00 | 1732.00 | 25.00 | 1739.59 | 0.00 | 0.00 | 154.86 | 70.95 |
| 8.5in Open Hole | 1757.00 | 15343.00 | 13586.00 | 1739.59 | 7004.57 | 154.86 | 70.95 | 1454.44 | 9027.97 |

Actual Wellpath Report

HOOD 11N-22B-M AWP

Page 9 of 11



REFERENCE WELLPATH IDENTIFICATION

| | | | |
|----------|--------------------------------|----------|--|
| Operator | SRC ENERGY | Slot | SLOT#03 HOOD 11N-22B-M (725'FSL & 1122'FEL SEC.20) |
| Area | COLORADO | Well | HOOD 11N-22B-M |
| Field | WELD COUNTY (NAD83,TRUE NORTH) | Wellbore | HOOD 11N-22B-M AWB |
| Facility | SEC.20-T06N-R66W | | |

TARGETS

| Name | TVD [ft] | North [ft] | East [ft] | Grid East [US ft] | Grid North [US ft] | Latitude | Longitude | Shape |
|--|-------------|---------------|--------------|----------------------|-----------------------|-----------------------|------------------------|---------|
| SEC.21-T06N-R66W | 21.00 | 40.07 | 0.00 | 3195753.51 | 1414279.17 | 40°28'06.478"N | 104°47'47.123"W | polygon |
| SEC.21-T06N-R66W 1/4 LINES | 21.00 | 40.07 | 0.00 | 3195753.51 | 1414279.17 | 40°28'06.478"N | 104°47'47.123"W | polygon |
| SEC.22-T06N-R66W | 21.00 | 40.07 | 0.00 | 3195753.51 | 1414279.17 | 40°28'06.478"N | 104°47'47.123"W | polygon |
| SEC.22-T06N-R66W 1/4 LINES | 21.00 | 40.07 | 0.00 | 3195753.51 | 1414279.17 | 40°28'06.478"N | 104°47'47.123"W | polygon |
| HOOD 11N-22C-M TOP OF PROD REV-2 (2062'FSL & 75'FWL SEC.21) | 6975.25 | 1353.50 | 1194.71 | 3196937.72 | 1415601.98 | 40°28'19.456"N | 104°47'31.664"W | point |
| HOOD 11N-22C-M BHL REV-2 (2065'FSL & 2611'FWL SEC.22) | 7010.67 | 1450.00 | 9026.99 | 3204768.69 | 1415760.61 | 40°28'20.394"N | 104°45'50.321"W | point |
| HOOD 11N-22C-M TOP OF PROD ON PLAT (2102'FSL & 75'FWL SEC.21) | 7033.00 | 1393.84 | 1194.74 | 3196937.43 | 1415642.32 | 40°28'19.855"N | 104°47'31.664"W | point |
| HOOD 11N-22C-M TOP OF PROD REV-1 (2068'FSL & 75'FWL SEC.21) | 7033.00 | 1360.00 | 1194.71 | 3196937.67 | 1415608.48 | 40°28'19.521"N | 104°47'31.664"W | point |
| HOOD 11N-22C-M BHL REV-1 (2058'FSL & 2611'FWL SEC.22) | 7074.00 | 1442.85 | 9026.99 | 3204768.74 | 1415753.46 | 40°28'20.323"N | 104°45'50.321"W | point |
| SEC.21&22-T06N-R66W 75' SOUTHERN SETBACKS | 7209.00 | 40.07 | 0.00 | 3195753.51 | 1414279.17 | 40°28'06.478"N | 104°47'47.123"W | polygon |

Actual Wellpath Report

HOOD 11N-22B-M AWP

Page 10 of 11



REFERENCE WELLPATH IDENTIFICATION

| | | | |
|----------|--------------------------------|----------|--|
| Operator | SRC ENERGY | Slot | SLOT#03 HOOD 11N-22B-M (725'FSL & 1122'FEL SEC.20) |
| Area | COLORADO | Well | HOOD 11N-22B-M |
| Field | WELD COUNTY (NAD83,TRUE NORTH) | Wellbore | HOOD 11N-22B-M AWB |
| Facility | SEC.20-T06N-R66W | | |

WELLPATH COMPOSITION - Ref Wellbore: HOOD 11N-22B-M AWB Ref Wellpath: HOOD 11N-22B-M AWP

| Start MD [ft] | End MD [ft] | Positional Uncertainty Model | Log Name/Comment | Wellbore |
|------------------|----------------|---|--|--------------------|
| 25.00 | 1707.00 | Custom BHI NaviTrak (Standard Rotating+Axial Corr) (Rockies 0.03Gt model) | BHI NAVITRAK 13.5" (STD ROTATING, AXIAL, ROCKIES GT)<109-1707> | HOOD 11N-22B-M AWB |
| 1707.00 | 15319.00 | Custom BHI AutoTrak Curve (IFR1, Short) (Rockies 0.03Gt model) | BHI ATC 8.5" (IFR, SHORT, ROCKIES GT)<1794-15319> | HOOD 11N-22B-M AWB |
| 15319.00 | 15343.00 | Blind Drilling (std) | Projection to bit | HOOD 11N-22B-M AWB |

Actual Wellpath Report

HOOD 11N-22B-M AWP

Page 11 of 11



REFERENCE WELLPATH IDENTIFICATION

| | | | |
|----------|--------------------------------|----------|--|
| Operator | SRC ENERGY | Slot | SLOT#03 HOOD 11N-22B-M (725'FSL & 1122'FEL SEC.20) |
| Area | COLORADO | Well | HOOD 11N-22B-M |
| Field | WELD COUNTY (NAD83,TRUE NORTH) | Wellbore | HOOD 11N-22B-M AWB |
| Facility | SEC.20-T06N-R66W | | |

WELLPATH COMMENTS

| MD [ft] | Inclination [°] | Azimuth [°] | TVD [ft] | Comment |
|------------|--------------------|----------------|-------------|---|
| 7608.00 | 89.910 | 84.480 | 6974.22 | LANDING POINT (2063'FSL & 180'FWL, SEC21) |
| 15319.00 | 89.780 | 88.760 | 7004.48 | LAST BHI MWD SURVEY (2069'FSL & 2855'FWL, SEC.22) |
| 15343.00 | 89.780 | 88.760 | 7004.57 | PROJECTION TO BIT (2069'FSL & 2610'FWL, SEC.22) |