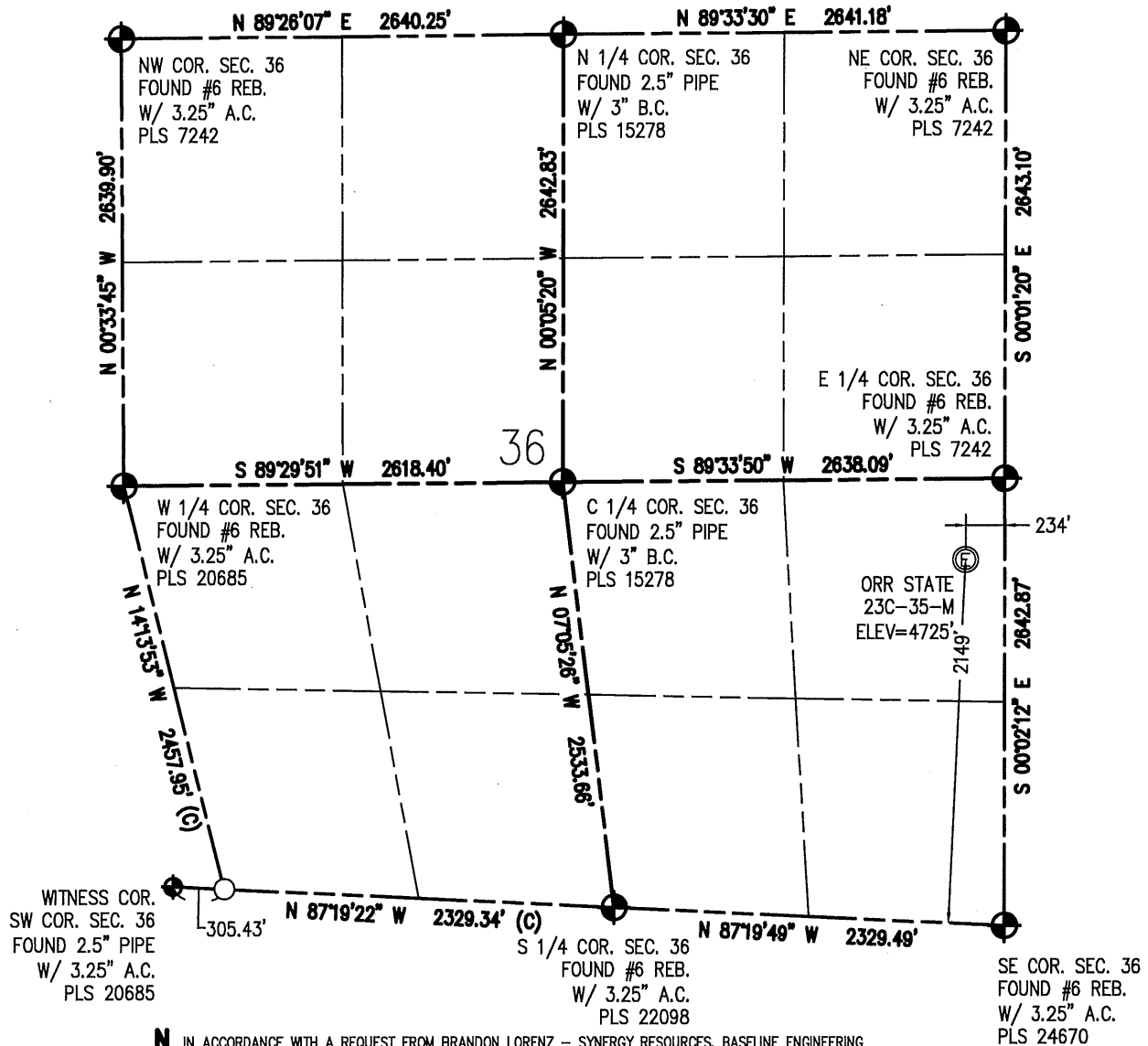


# WELL LOCATION CERTIFICATE - AS - DRILLED

THIS MAP DOES NOT REPRESENT A BOUNDARY SURVEY



Scale 1" = 1000 ft

IN ACCORDANCE WITH A REQUEST FROM BRANDON LORENZ -- SYNERGY RESOURCES, BASELINE ENGINEERING CORP. HAS DETERMINED THE LOCATION OF THE ORR STATE 23C-35-M TO BE 2149' FSL AND 234' FEL, AS MEASURED AT NINETY (90) DEGREES FROM THE SECTION LINE OF SECTION 36, TOWNSHIP 6 NORTH, RANGE 67 WEST, 6TH PRINCIPAL MERIDIAN, WELD COUNTY, COLORADO.

I HEREBY CERTIFY THAT THIS WELL LOCATION CERTIFICATE WAS PREPARED BY ME, OR UNDER MY DIRECT SUPERVISION, THAT THE FIELD WORK WAS COMPLETED ON 11/9/2017, THAT IT IS NOT A LAND SURVEY PLAT OR AN IMPROVEMENT SURVEY PLAT, AND THAT IT IS NOT TO BE RELIED UPON FOR ESTABLISHMENT OF FENCE, BUILDING, OR OTHER FUTURE IMPROVEMENT LINES.

**SURFACE HOLE:**  
LATITUDE: 40.442138° N  
LONGITUDE: 104.833384° W  
PDOP: 1.5  
1/4, 1/4: NE1/4 SE1/4

## LEGEND

- - FOUND/SET SURVEY MONUMENT PER MONUMENT RECORD EXCEPTIONS NOTED.
- - CALCULATED SURVEY MONUMENT POSITION
- (C) - CALCULATED DIMENSION

AARON A. DEMO  
Professional Land Surveyor Registration No. 38285  
Completed 12/6/2017

State of Colorado  
FOR AND ON BEHALF OF BASELINE ENGINEERING CORP.

