

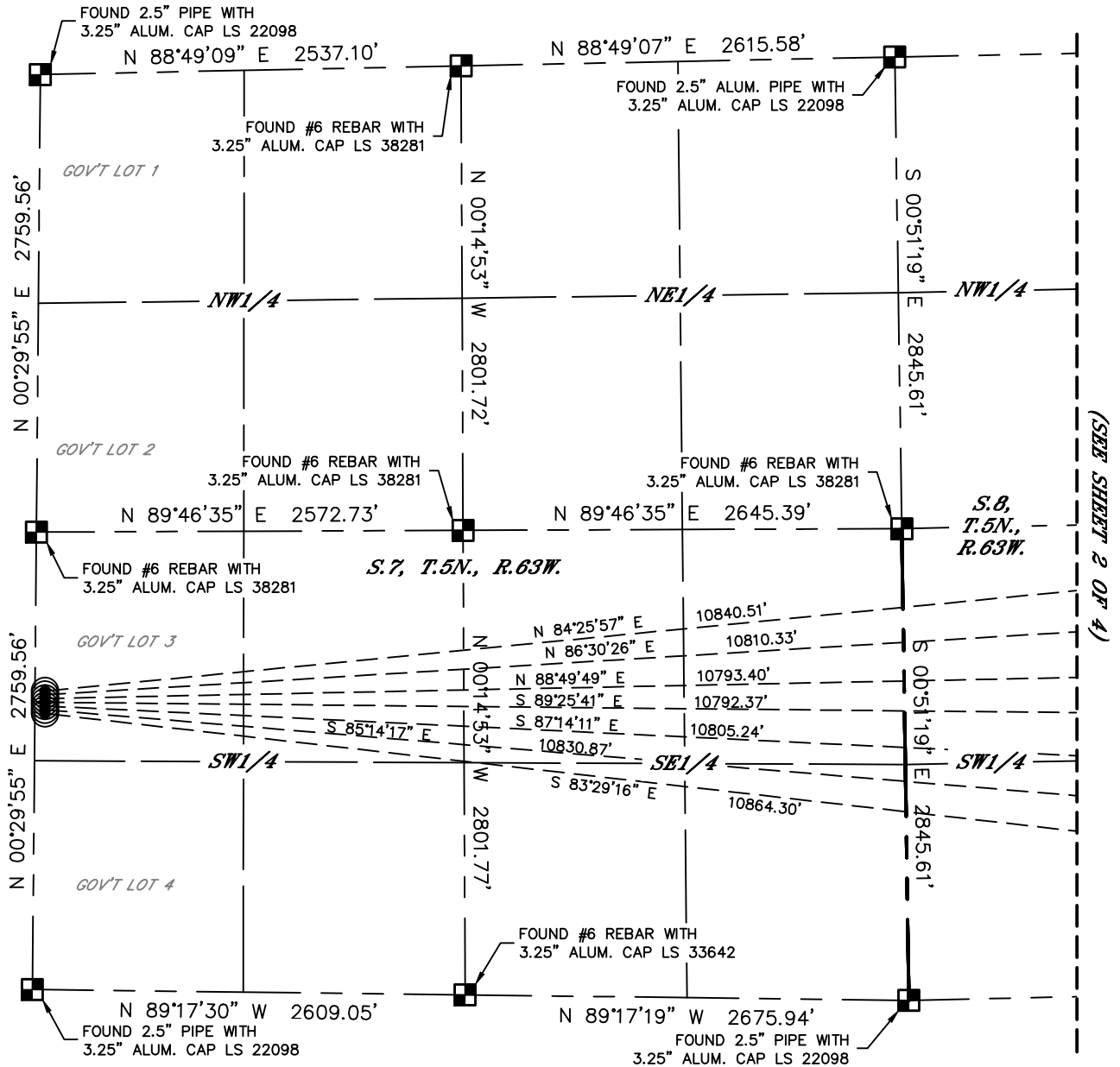


MULTI-WELL PLAN

BB07-33 PAD

SECTION: 7
TOWNSHIP: 5N
RANGE: 63W
6TH. P.M.
WELD COUNTY, CO

THIS MAP DOES NOT REPRESENT A BOUNDARY SURVEY

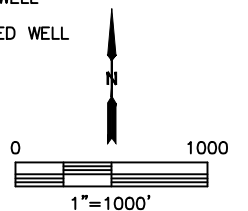


(SEE SHEET 2 OF 4)

LEGEND

- = ALIQUOT MONUMENT AS DESCRIBED
- = CALCULATED POSITION
- = SURFACE HOLE LOCATION (SHL)
- ▲ = ENTRY POINT LOCATION (EP)
- _{BH} = BOTTOM HOLE LOCATION (BHL)
- ⊙ = EXISTING WELL
- ⊙ = ABANDONED WELL

#	WELL NAME	BHL FOOTAGE			BHL LAT °	BHL LONG °	BHL S-T-R	
1	SLW RANCH STATE BB07-650	2775	FSL	385	FWL	40.41363	-104.45001	9-5-63
2	SLW RANCH STATE BB07-646	2360	FSL	385	FWL	40.41249	-104.45003	9-5-63
3	SLW RANCH STATE BB07-639	1900	FSL	385	FWL	40.41123	-104.45005	9-5-63
4	SLW RANCH STATE BB07-633	1550	FSL	385	FWL	40.41027	-104.45006	9-5-63
5	SLW RANCH STATE BB07-627	1115	FSL	385	FWL	40.40907	-104.45007	9-5-63
6	SLW RANCH STATE BB07-621	715	FSL	385	FWL	40.40797	-104.45009	9-5-63
7	SLW RANCH STATE BB07-615	360	FSL	385	FWL	40.40700	-104.45010	9-5-63





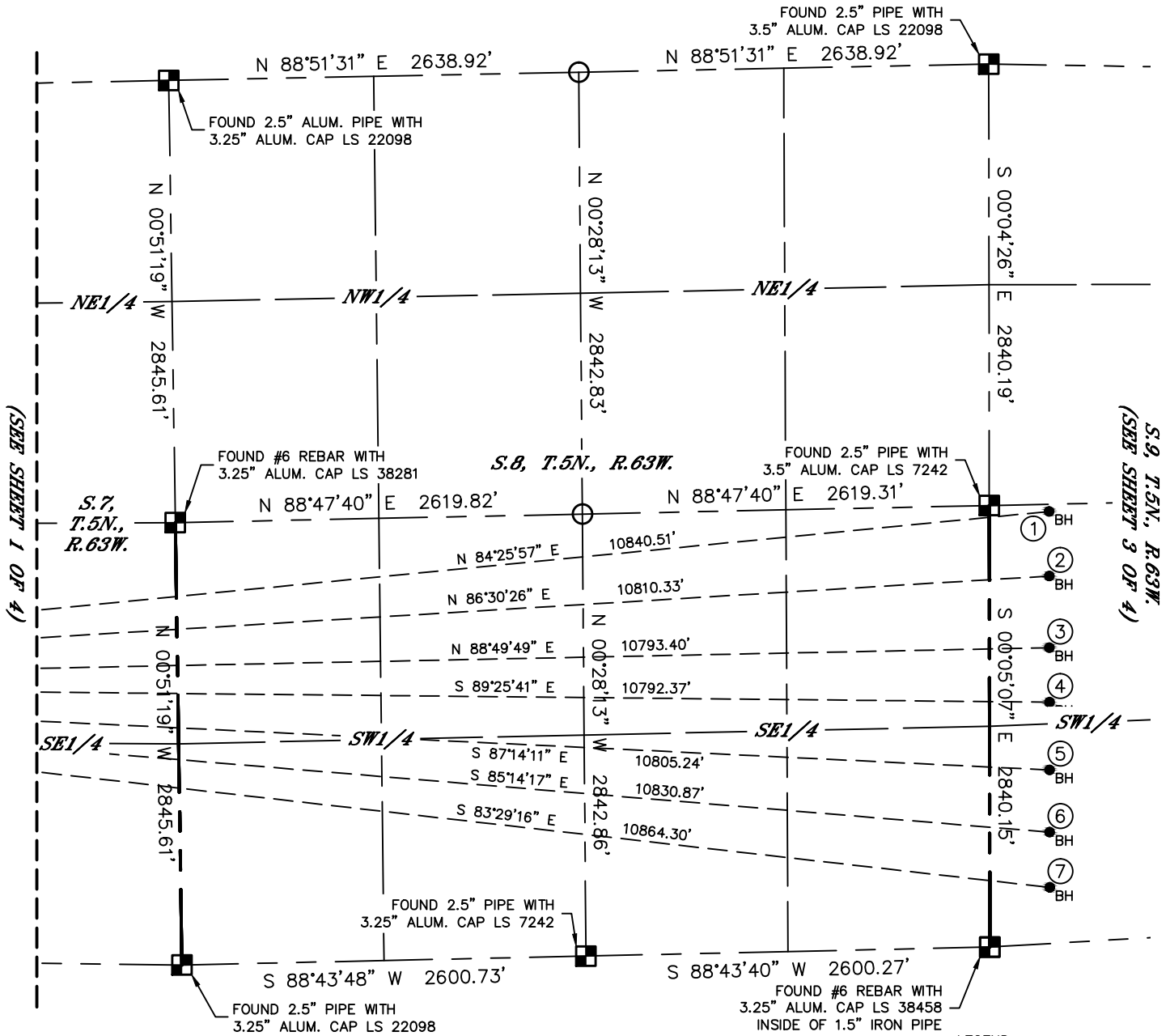
Lat40°, Inc. 6250 W. 10th Street, Unit 2, Greeley, CO 970-515-5294

MULTI-WELL PLAN

BB07-33 PAD

SECTION: 7
TOWNSHIP: 5N
RANGE: 63W
6TH. P.M.
WELD COUNTY, CO

THIS MAP DOES NOT REPRESENT A BOUNDARY SURVEY

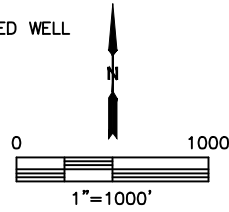


(SEE SHEET 1 OF 4)

(SEE SHEET 3 OF 4)

- LEGEND**
- = ALIQUOT MONUMENT AS DESCRIBED
 - = CALCULATED POSITION
 - = SURFACE HOLE LOCATION (SHL)
 - ▲ = ENTRY POINT LOCATION (EP)
 - = BOTTOM HOLE LOCATION (BHL)
 - ⊙ = EXISTING WELL
 - ⊙ = ABANDONED WELL

#	WELL NAME	BHL FOOTAGE				BHL LAT °	BHL LONG °	BHL S-T-R
1	SLW RANCH STATE BB07-650	2775	FSL	385	FWL	40.41363	-104.45001	9-5-63
2	SLW RANCH STATE BB07-646	2360	FSL	385	FWL	40.41249	-104.45003	9-5-63
3	SLW RANCH STATE BB07-639	1900	FSL	385	FWL	40.41123	-104.45005	9-5-63
4	SLW RANCH STATE BB07-633	1550	FSL	385	FWL	40.41027	-104.45006	9-5-63
5	SLW RANCH STATE BB07-627	1115	FSL	385	FWL	40.40907	-104.45007	9-5-63
6	SLW RANCH STATE BB07-621	715	FSL	385	FWL	40.40797	-104.45009	9-5-63
7	SLW RANCH STATE BB07-615	360	FSL	385	FWL	40.40700	-104.45010	9-5-63





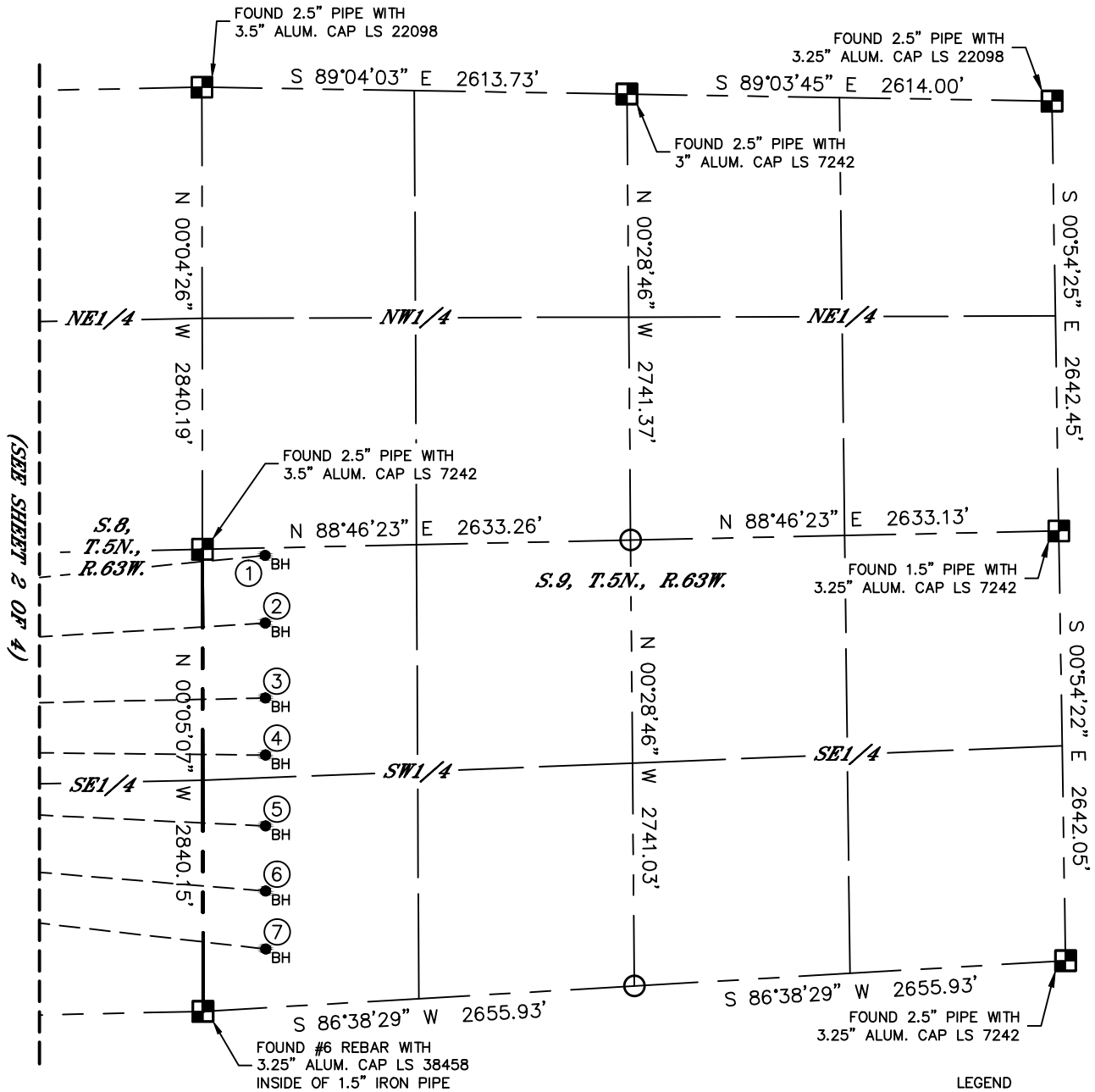
Lat40°, Inc. 6250 W. 10th Street, Unit 2, Greeley, CO 970-515-5294

MULTI-WELL PLAN

BB07-33 PAD

SECTION: 7
TOWNSHIP: 5N
RANGE: 63W
6TH. P.M.
WELD COUNTY, CO

THIS MAP DOES NOT REPRESENT A BOUNDARY SURVEY

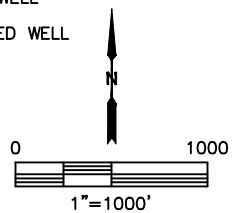


(SEE SHEET 2 OF 4)

LEGEND

- = ALIQUOT MONUMENT AS DESCRIBED
- = CALCULATED POSITION
- = SURFACE HOLE LOCATION (SHL)
- ▲ = ENTRY POINT LOCATION (EP)
- = BOTTOM HOLE LOCATION (BHL)
- ⊙ = EXISTING WELL
- ⊙ = ABANDONED WELL

#	WELL NAME	BHL FOOTAGE			BHL LAT °	BHL LONG °	BHL S-T-R	
1	SLW RANCH STATE BB07-650	2775	FSL	385	FWL	40.41363	-104.45001	9-5-63
2	SLW RANCH STATE BB07-646	2360	FSL	385	FWL	40.41249	-104.45003	9-5-63
3	SLW RANCH STATE BB07-639	1900	FSL	385	FWL	40.41123	-104.45005	9-5-63
4	SLW RANCH STATE BB07-633	1550	FSL	385	FWL	40.41027	-104.45006	9-5-63
5	SLW RANCH STATE BB07-627	1115	FSL	385	FWL	40.40907	-104.45007	9-5-63
6	SLW RANCH STATE BB07-621	715	FSL	385	FWL	40.40797	-104.45009	9-5-63
7	SLW RANCH STATE BB07-615	360	FSL	385	FWL	40.40700	-104.45010	9-5-63





Lat40°, Inc. 6250 W. 10th Street, Unit 2, Greeley, CO 970-515-5294

MULTI-WELL PLAN

BB07-33 PAD

SECTION: 7
TOWNSHIP: 5N
RANGE: 63W
6TH. P.M.
WELD COUNTY, CO

