

# **Northern Region - DJ Basin**

**Wells Ranch**

**BB Section 06**

**SLW Ranch State BB06-652**

**Original Drilling**

**Plan 1**

## **Anticollision Summary Report**

**26 September, 2017**

**Noble Energy, Inc.**  
Anticollision Summary Report

<b>Company:</b>	Northern Region - DJ Basin	<b>Local Co-ordinate Reference:</b>	Well SLW Ranch State BB06-652
<b>Project:</b>	Wells Ranch	<b>TVD Reference:</b>	WELL @ 4639.0ft (Original Well Elev.)
<b>Reference Site:</b>	BB Section 06	<b>MD Reference:</b>	WELL @ 4639.0ft (Original Well Elev.)
<b>Site Error:</b>	0.0 ft	<b>North Reference:</b>	Grid
<b>Reference Well:</b>	SLW Ranch State BB06-652	<b>Survey Calculation Method:</b>	Minimum Curvature
<b>Well Error:</b>	0.0 ft	<b>Output errors are at</b>	2.00 sigma
<b>Reference Wellbore</b>	Original Drilling	<b>Database:</b>	EDMP
<b>Reference Design:</b>	Plan 1	<b>Offset TVD Reference:</b>	Offset Datum

<b>Reference</b>	Plan 1		
<b>Filter type:</b>	NO GLOBAL FILTER: Using user defined selection & filtering criteria		
<b>Interpolation Method:</b>	Stations	<b>Error Model:</b>	ISCWSA
<b>Depth Range:</b>	Unlimited	<b>Scan Method:</b>	Closest Approach 3D
<b>Results Limited by:</b>	Maximum center-center distance of 10,000.0 ft	<b>Error Surface:</b>	Pedal Curve
<b>Warning Levels Evaluated at:</b>	2.00 Sigma	<b>Casing Method:</b>	Not applied

<b>Survey Tool Program</b>	<b>Date</b>	9/26/2017		
<b>From (ft)</b>	<b>To (ft)</b>	<b>Survey (Wellbore)</b>	<b>Tool Name</b>	<b>Description</b>
0.0	12,150.9	Plan 1 (Original Drilling)	2_MWD+IFR1+MS	A008Mb: IFR dec & multi-station analysis

Summary						
Site Name	Reference Measured Depth (ft)	Offset Measured Depth (ft)	Distance Between Centres (ft)	Distance Between Ellipses (ft)	Separation Factor	Warning
Offset Well - Wellbore - Design						
B Section 01						
Lucci B01-69HNL - Original Drilling - Original Drilling - As	7,783.4	12,193.3	2,570.2	2,417.6	16.845	CC
Lucci B01-69HNL - Original Drilling - Original Drilling - As	11,237.8	15,648.0	2,600.3	2,333.8	9.756	ES
Lucci B01-69HNL - Original Drilling - Original Drilling - As	11,400.0	15,648.0	2,605.4	2,337.4	9.722	SF
Lucci B01-99HZ - Original Drilling - Original Drilling - As	6,273.7	10,974.3	1,375.4	1,303.9	19.236	CC, ES
Lucci B01-99HZ - Original Drilling - Original Drilling - As	6,400.0	11,010.0	1,390.4	1,316.9	18.935	SF
Lucci B03-69HNL - Original Drilling - Original Drilling - As	5,989.3	5,625.3	5,032.6	4,994.0	130.532	CC
Lucci B03-69HNL - Original Drilling - Original Drilling - As	6,000.0	5,646.0	5,032.7	4,994.0	130.139	ES
Lucci B03-69HNL - Original Drilling - Original Drilling - As	6,300.0	5,788.3	5,107.2	5,067.1	127.453	SF
Lucci BC B1-16 - Wellbore #1 - Wellbore #1	6,056.7	6,003.8	2,142.4	2,100.1	50.717	CC, ES
Lucci BC B1-16 - Wellbore #1 - Wellbore #1	6,550.0	6,435.0	2,191.1	2,145.9	48.549	SF
SLW Ranch B01-62-1HN - Original Drilling - As Drilled	3,679.0	3,629.4	2,188.0	2,159.8	77.557	CC
SLW Ranch B01-62-1HN - Original Drilling - As Drilled	3,700.0	3,642.9	2,188.1	2,159.7	77.124	ES
SLW Ranch B01-62-1HN - Original Drilling - As Drilled	6,800.0	6,493.0	2,327.6	2,276.5	45.505	SF
SLW Ranch B01-63-1HN - Original Drilling - As Drilled	5,521.6	5,600.0	1,785.1	1,740.6	40.125	CC
SLW Ranch B01-63-1HN - Original Drilling - As Drilled	5,600.0	5,668.8	1,785.5	1,740.4	39.656	ES
SLW Ranch B01-63-1HN - Original Drilling - As Drilled	6,500.0	6,491.0	1,801.3	1,752.0	36.513	SF
SLW Ranch B01-64-1HN - Original Drilling - As Drilled	6,350.0	6,506.2	1,095.7	1,046.9	22.450	SF
SLW Ranch B01-64-1HN - Original Drilling - As Drilled	6,385.1	6,525.5	1,095.3	1,046.5	22.465	CC, ES
SLW Ranch B01-66-1HN - Original Drilling - Original Drill	6,394.8	6,543.3	326.1	282.2	7.436	CC
SLW Ranch B01-66-1HN - Original Drilling - Original Drill	6,400.0	6,544.4	326.1	282.2	7.418	ES
SLW Ranch B01-66-1HN - Original Drilling - Original Drill	6,450.0	6,552.6	331.5	286.6	7.381	SF
SLW Ranch B01-67-1HN - Original Drilling - As Drilled - S	4,507.8	4,518.9	841.6	811.0	27.501	CC
SLW Ranch B01-67-1HN - Original Drilling - As Drilled - S	4,600.0	4,605.2	842.0	810.8	26.945	ES
SLW Ranch B01-67-1HN - Original Drilling - As Drilled - S	6,450.0	6,383.4	870.3	826.6	19.924	SF
SLW Ranch B01-68-1HN - Original Drilling - Original Drill	1,776.3	1,775.2	1,163.1	1,151.8	103.051	CC
SLW Ranch B01-68-1HN - Original Drilling - Original Drill	1,800.0	1,790.6	1,163.2	1,151.7	101.796	ES
SLW Ranch B01-68-1HN - Original Drilling - Original Drill	6,600.0	6,508.4	1,531.3	1,486.6	34.287	SF
SLW Ranch B01-69-1HN - Original Drilling - As Drilled	818.9	819.1	1,188.4	1,184.0	267.853	CC
SLW Ranch B01-69-1HN - Original Drilling - As Drilled	2,900.0	2,866.2	1,201.8	1,182.8	63.152	ES
SLW Ranch B01-69-1HN - Original Drilling - As Drilled	6,350.0	6,350.0	1,834.1	1,790.9	42.492	SF
SLW Ranch B12-69-1HN - Wellbore #1 - Wellbore #1- As	847.3	1,478.4	2,264.0	2,258.3	401.362	CC
SLW Ranch B12-69-1HN - Wellbore #1 - Wellbore #1- As	1,200.0	1,818.1	2,264.2	2,256.1	279.197	ES
SLW Ranch B12-69-1HN - Wellbore #1 - Wellbore #1- As	6,050.0	6,115.0	2,761.2	2,718.2	64.169	SF

CC - Min centre to center distance or convergent point, SF - min separation factor, ES - min ellipse separation

**Noble Energy, Inc.**  
Anticollision Summary Report

<b>Company:</b>	Northern Region - DJ Basin	<b>Local Co-ordinate Reference:</b>	Well SLW Ranch State BB06-652
<b>Project:</b>	Wells Ranch	<b>TVD Reference:</b>	WELL @ 4639.0ft (Original Well Elev.)
<b>Reference Site:</b>	BB Section 06	<b>MD Reference:</b>	WELL @ 4639.0ft (Original Well Elev.)
<b>Site Error:</b>	0.0 ft	<b>North Reference:</b>	Grid
<b>Reference Well:</b>	SLW Ranch State BB06-652	<b>Survey Calculation Method:</b>	Minimum Curvature
<b>Well Error:</b>	0.0 ft	<b>Output errors are at</b>	2.00 sigma
<b>Reference Wellbore</b>	Original Drilling	<b>Database:</b>	EDMP
<b>Reference Design:</b>	Plan 1	<b>Offset TVD Reference:</b>	Offset Datum

Summary						
Site Name	Reference Measured Depth (ft)	Offset Measured Depth (ft)	Distance Between Centres (ft)	Distance Between Ellipses (ft)	Separation Factor	Warning
Offset Well - Wellbore - Design						
BB Section 05						
UPV 05-03H3 - Original Drilling - Original Drilling - As Dri	12,150.9	6,604.0	2,470.3	2,388.5	30.226	CC, ES, SF
UPV 05-04H3 - Original Drilling - Original Drilling - As Dri	12,150.9	6,661.1	1,665.0	1,569.9	17.508	CC, ES, SF
UPV 05-05H3 - Original Drilling - Original Drilling - As Dri	12,150.9	6,626.0	449.5	377.5	6.241	CC, ES, SF
UPV 05-06H3 - Original Drilling - Original Drilling - As Dri	12,150.9	6,610.0	1,730.2	1,675.7	31.755	CC, ES, SF
Well Ranch AA32-757 - Wellbore #1 - Plan 1	12,150.9	6,200.0	2,475.0	2,402.2	34.027	CC, ES, SF
Wells Ranch 31-05 - Original Drilling - Original Drilling - A	12,150.9	6,642.1	3,636.6	3,569.8	54.428	CC, ES, SF
Wells Ranch 32-05 - Original Drilling - Original Drilling - A	12,150.9	6,612.8	3,038.6	2,988.1	60.186	CC, ES, SF
Wells Ranch 41-05 - Original Drilling - Original Drilling - A	12,150.9	6,565.6	4,657.0	4,598.0	78.865	CC, ES, SF
Wells Ranch 42-05 - Original Drilling - Original Drilling - A	12,150.9	6,601.3	4,276.1	4,227.6	88.111	CC, ES, SF
Wells Ranch AA32-718 - Wellbore #1 - Plan 1	12,150.9	6,150.0	4,602.7	4,546.7	82.139	CC, ES, SF
Wells Ranch AA32-725 - Wellbore #1 - Plan 1	12,150.9	6,272.8	4,292.0	4,234.4	74.508	CC, ES, SF
Wells Ranch AA32-731 - Wellbore #1 - Plan 1	12,150.9	6,350.0	3,864.0	3,804.4	64.877	CC, ES, SF
Wells Ranch AA32-738 - Wellbore #1 - Plan 1	12,150.9	6,550.0	3,497.2	3,434.4	55.679	CC, ES, SF
Wells Ranch AA32-744 - Wellbore #1 - Plan 1	12,150.9	6,130.0	2,999.2	2,932.5	45.017	CC, ES, SF
Wells Ranch AA32-750 - Wellbore #1 - Plan 1	12,150.9	6,228.5	2,763.8	2,695.0	40.180	CC, ES, SF
Wells Ranch AA32-763 - Wellbore #1 - Plan 1	12,150.9	6,418.3	2,065.4	1,988.2	26.756	CC, ES, SF
Wells Ranch AA32-770 - Wellbore #1 - Plan 1	12,150.9	6,250.0	1,898.6	1,811.8	21.871	CC, ES, SF
Wells Ranch AA32-776 - Wellbore #1 - Plan 1	12,150.9	6,300.0	1,782.7	1,691.5	19.550	CC, ES, SF
Wells Ranch AA32-783 - Wellbore #1 - Plan 1	12,150.9	6,250.0	1,699.8	1,607.2	18.362	CC, ES, SF
Wells Ranch AA32-790 - Wellbore #1 - Plan 1	11,855.4	6,322.5	1,639.5	1,549.1	18.123	CC, ES
Wells Ranch AA32-790 - Wellbore #1 - Plan 1	12,100.0	6,300.0	1,657.6	1,564.9	17.888	SF
Wells Ranch BB01-611 - Original Drilling - APD - Rev 2						Out of range
Wells Ranch BB01-611 - Original Drilling - Original Drillin						Out of range
Wells Ranch BB01-615 - Original Drilling - APD - Rev 2						Out of range
Wells Ranch BB01-615 - Original Drilling - Option 2						Out of range
Wells Ranch BB01-615 - Original Drilling - Original Drillin						Out of range
Wells Ranch BB01-624 - Original Drilling - APD - Rev 2						Out of range
Wells Ranch BB01-624 - Original Drilling - As Drilled - 1						Out of range
Wells Ranch BB01-624 - Original Drilling - New Plan						Out of range
Wells Ranch BB01-624 - Original Drilling - Original Drillin						Out of range
Wells Ranch BB01-624 - Original Drilling - Original Plan						Out of range
Wells Ranch BB01-624 - Original Drilling - ST01 - ST01 -						Out of range
Wells Ranch BB01-638 - Original Drilling - APD - Rev 2						Out of range
Wells Ranch BB01-638 - Original Drilling - Original Drillin						Out of range
Wells Ranch BB01-649 - Original Drilling - APD - Rev 2						Out of range
Wells Ranch BB01-649 - Original Drilling - Original Drillin						Out of range
Wells Ranch BB01-655 - Original Drilling - APD - Rev 2						Out of range
Wells Ranch BB01-655 - Original Drilling - Original Drillin						Out of range
Wells Ranch BB01-669 - Original Drilling - APD - Rev 2						Out of range
Wells Ranch BB01-669 - Original Drilling - Original Drillin						Out of range
Wells Ranch BB01-675 - Original Drilling - APD - Rev 2						Out of range
Wells Ranch BB01-675 - Original Drilling - Original Drillin						Out of range
Wells Ranch State BB01-690 - Original Drilling - APD - R						Out of range
Wells Ranch State BB01-690 - Original Drilling - Original						Out of range
Wells Ranch USX BB05-09 - Original Drilling - Original D	12,150.9	6,613.0	4,470.1	4,421.3	91.659	CC, ES, SF
Wells Ranch USX BB05-10 - Original Drilling - Original D	12,150.9	6,603.0	3,185.6	3,132.5	60.001	CC, ES, SF
Wells Ranch USX BB05-11 - Original Drilling - Original D	12,150.9	6,713.8	1,798.7	1,741.8	31.623	CC, ES, SF
Wells Ranch USX BB05-12 - Original Drilling - Original D	12,150.9	6,673.9	972.1	880.2	10.570	CC, ES, SF
Wells Ranch USX BB05-13 - Original Drilling - Original D	12,150.9	6,690.3	2,135.5	2,038.9	22.111	CC, ES, SF
Wells Ranch USX BB05-14 - Original Drilling - Original D	12,150.9	6,744.0	2,572.1	2,490.0	31.297	CC, ES, SF
Wells Ranch USX BB05-15 - Original Drilling - Original D	12,150.9	6,506.6	3,589.6	3,520.9	52.243	CC, ES, SF
Wells Ranch USX BB05-16 - Original Drilling - Original D	12,150.9	6,586.4	4,673.9	4,613.3	77.140	CC, ES, SF
Wells Ranch USX BB05-23 - Original Drilling - Original D	12,150.9	6,654.6	4,054.9	3,998.4	71.746	CC, ES, SF

CC - Min centre to center distance or convergent point, SF - min separation factor, ES - min ellipse separation

**Noble Energy, Inc.**  
Anticollision Summary Report

<b>Company:</b>	Northern Region - DJ Basin	<b>Local Co-ordinate Reference:</b>	Well SLW Ranch State BB06-652
<b>Project:</b>	Wells Ranch	<b>TVD Reference:</b>	WELL @ 4639.0ft (Original Well Elev.)
<b>Reference Site:</b>	BB Section 06	<b>MD Reference:</b>	WELL @ 4639.0ft (Original Well Elev.)
<b>Site Error:</b>	0.0 ft	<b>North Reference:</b>	Grid
<b>Reference Well:</b>	SLW Ranch State BB06-652	<b>Survey Calculation Method:</b>	Minimum Curvature
<b>Well Error:</b>	0.0 ft	<b>Output errors are at</b>	2.00 sigma
<b>Reference Wellbore</b>	Original Drilling	<b>Database:</b>	EDMP
<b>Reference Design:</b>	Plan 1	<b>Offset TVD Reference:</b>	Offset Datum

Summary						
Site Name	Reference Measured Depth (ft)	Offset Measured Depth (ft)	Distance Between Centres (ft)	Distance Between Ellipses (ft)	Separation Factor	Warning
Offset Well - Wellbore - Design						
BB Section 05						
Wells Ranch USX BB05-25 - Original Drilling - Original D	12,150.9	6,679.9	1,636.2	1,548.0	18.560	CC, ES, SF
BB Section 06						
Skurich-Roth 21-06 - Original Drilling - Original Drilling - A	8,548.6	6,581.2	1,798.3	1,741.2	31.512	CC, ES
Skurich-Roth 21-06 - Original Drilling - Original Drilling - A	8,900.0	6,580.9	1,832.3	1,772.4	30.578	SF
Skurich-Roth 23-06 - Original Drilling - Original Drilling - A	8,593.9	6,565.5	770.7	713.2	13.420	CC
Skurich-Roth 23-06 - Original Drilling - Original Drilling - A	8,600.0	6,565.8	770.7	713.2	13.407	ES
Skurich-Roth 23-06 - Original Drilling - Original Drilling - A	8,700.0	6,570.5	777.9	719.7	13.357	SF
Skurich-Roth 24-06 - Original Drilling - Original Drilling - A	8,562.1	6,618.1	2,076.2	2,018.9	36.212	CC, ES
Skurich-Roth 24-06 - Original Drilling - Original Drilling - A	9,100.0	6,619.8	2,144.8	2,083.1	34.788	SF
Skurich-Roth 33-06 - Original Drilling - Original Drilling - A	9,836.6	6,584.1	817.2	747.2	11.671	CC, ES
Skurich-Roth 33-06 - Original Drilling - Original Drilling - A	9,900.0	6,582.5	819.7	749.1	11.611	SF
Skurich-Roth 42-06 - Original Drilling - Original Drilling - A	11,101.4	6,625.8	494.4	410.1	5.864	CC, ES, SF
Skurich-Roth 6D - Original Drilling - Original Drilling - As	8,095.8	6,547.7	1,172.8	1,119.7	22.097	CC
Skurich-Roth 6D - Original Drilling - Original Drilling - As	8,100.0	6,547.6	1,172.8	1,119.7	22.084	ES
Skurich-Roth 6D - Original Drilling - Original Drilling - As	8,300.0	6,544.4	1,190.4	1,135.9	21.838	SF
Skurich-Roth 11-06 - Original Drilling - Original Drilling -	7,271.9	6,576.5	1,837.6	1,777.9	30.819	CC, ES
Skurich-Roth 11-06 - Original Drilling - Original Drilling -	7,600.0	6,576.5	1,866.6	1,805.4	30.471	SF
Skurich-Roth 12-06 - Original Drilling - Original Drilling -	7,354.1	6,566.5	569.7	521.4	11.798	CC, ES
Skurich-Roth 12-06 - Original Drilling - Original Drilling -	7,400.0	6,566.7	571.6	523.1	11.783	SF
Skurich-Roth 13-06 - Original Drilling - Original Drilling -	7,239.2	6,575.2	758.0	708.2	15.202	CC, ES
Skurich-Roth 13-06 - Original Drilling - Original Drilling -	7,300.0	6,574.6	760.5	710.4	15.178	SF
Skurich-Roth 14-06 - Original Drilling - Original Drilling -	7,322.2	6,562.6	2,091.9	2,043.7	43.457	CC, ES
Skurich-Roth 14-06 - Original Drilling - Original Drilling -	7,900.0	6,592.0	2,170.0	2,118.7	42.260	SF
Skurich-Roth 22-06 - Original Drilling - Original Drilling -	8,538.1	6,591.1	297.7	240.6	5.218	CC, ES, SF
Skurich-Roth 31-06 - Original Drilling - Original Drilling -	9,768.0	6,685.9	1,819.6	1,750.0	26.146	CC
Skurich-Roth 31-06 - Original Drilling - Original Drilling -	9,800.0	6,685.8	1,819.9	1,750.0	26.026	ES
Skurich-Roth 31-06 - Original Drilling - Original Drilling -	10,100.0	6,684.5	1,849.6	1,777.1	25.504	SF
Skurich-Roth 34-06 - Original Drilling - Original Drilling -	9,842.9	6,583.9	2,083.5	2,013.4	29.724	CC, ES
Skurich-Roth 34-06 - Original Drilling - Original Drilling -	10,300.0	6,584.6	2,133.1	2,059.0	28.767	SF
Skurich-Roth 41-06 - Original Drilling - Original Drilling -	11,123.8	6,645.5	1,841.0	1,756.4	21.755	CC, ES
Skurich-Roth 41-06 - Original Drilling - Original Drilling -	11,400.0	6,657.3	1,861.6	1,774.4	21.349	SF
Skurich-Roth 43-06 - Original Drilling - Original Drilling -	11,012.1	6,607.0	678.9	595.7	8.158	CC, ES, SF
Skurich-Roth 44-06 - Original Drilling - Original Drilling -	11,154.3	6,637.4	1,976.2	1,891.3	23.265	CC, ES
Skurich-Roth 44-06 - Original Drilling - Original Drilling -	11,500.0	6,637.9	2,006.2	1,918.2	22.773	SF
Skurich-Roth 6A - Original Drilling - Original Drilling - As	10,558.6	6,607.0	1,380.8	1,302.8	17.688	CC, ES
Skurich-Roth 6A - Original Drilling - Original Drilling - As	10,700.0	6,606.5	1,388.0	1,308.6	17.476	SF
Skurich-Roth 32-06 - Original Drilling - Original Drilling -	9,807.0	6,603.0	563.3	384.4	3.148	CC, ES, SF
SLW Ranch State BB06-619 - Original Drilling - Prelim -	2,000.0	2,000.0	69.2	55.3	4.989	CC, ES
SLW Ranch State BB06-619 - Original Drilling - Prelim -	2,100.0	2,097.7	70.9	56.3	4.868	SF
SLW Ranch State BB06-631 - Original Drilling - Plan 1	2,200.0	2,200.0	43.7	28.4	2.856	CC, ES
SLW Ranch State BB06-631 - Original Drilling - Plan 1	2,300.0	2,298.6	45.3	29.3	2.831	SF
SLW Ranch State BB06-642 - Original Drilling - Plan 1	2,400.0	2,400.0	21.9	5.1	1.306	Level 3, CC, ES, SF
SLW Ranch State BB06-662 - Original Drilling - Plan 1	2,400.0	2,400.0	21.9	5.1	1.306	Level 3, CC, ES, SF
SLW Ranch State BB06-672 - Original Drilling - Plan 1	2,200.0	2,201.0	43.7	28.4	2.855	CC, ES
SLW Ranch State BB06-672 - Original Drilling - Plan 1	2,300.0	2,299.6	45.3	29.3	2.828	SF
SLW Ranch State BB06-682 - SLW Ranch State BB06-6	2,000.0	2,000.0	69.2	55.3	4.989	CC, ES
SLW Ranch State BB06-682 - SLW Ranch State BB06-6	2,100.0	2,097.7	70.8	56.3	4.860	SF

CC - Min centre to center distance or convergent point, SF - min separation factor, ES - min ellipse separation

# Noble Energy, Inc.

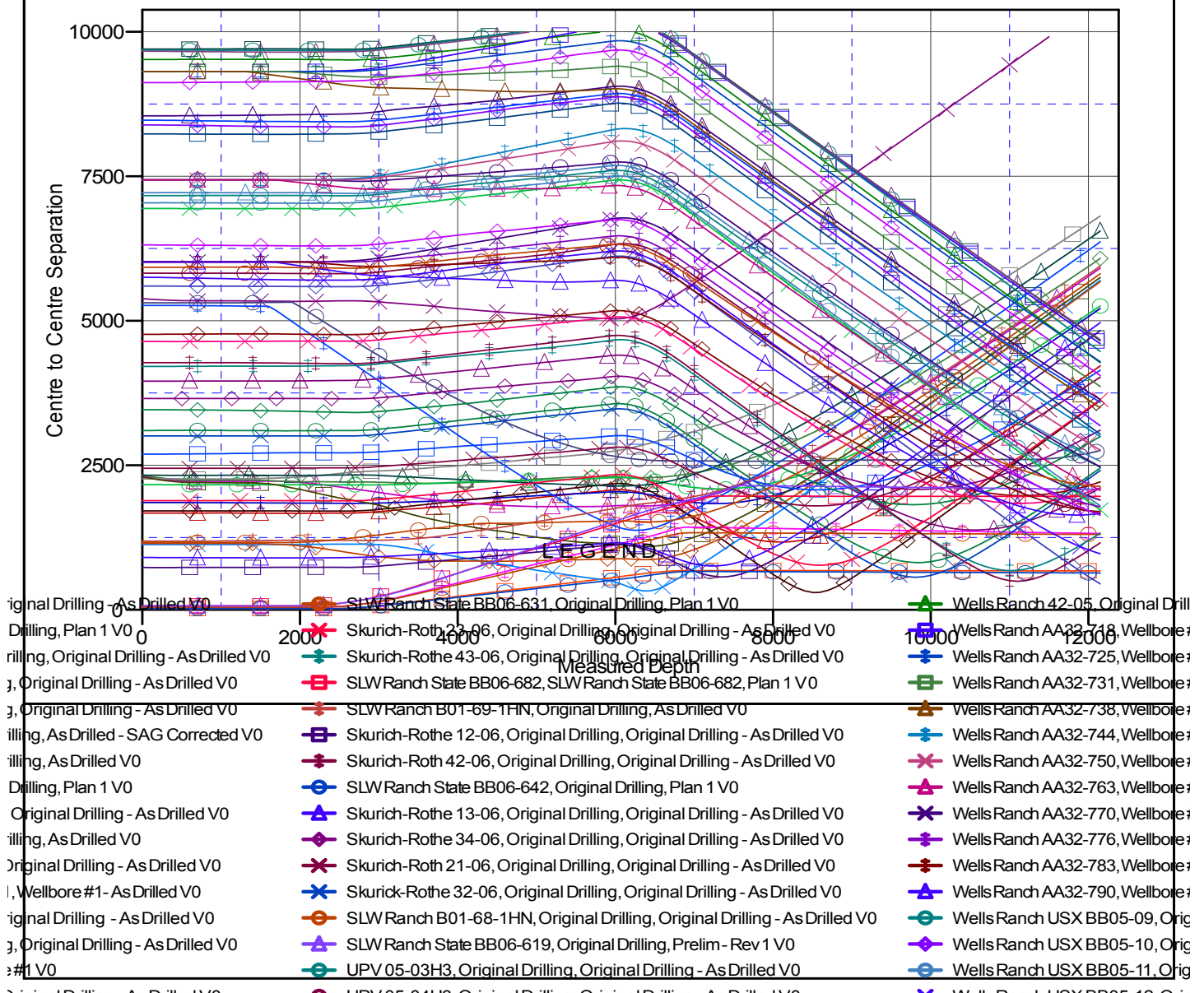
## Anticollision Summary Report

<b>Company:</b>	Northern Region - DJ Basin	<b>Local Co-ordinate Reference:</b>	Well SLW Ranch State BB06-652
<b>Project:</b>	Wells Ranch	<b>TVD Reference:</b>	WELL @ 4639.0ft (Original Well Elev.)
<b>Reference Site:</b>	BB Section 06	<b>MD Reference:</b>	WELL @ 4639.0ft (Original Well Elev.)
<b>Site Error:</b>	0.0 ft	<b>North Reference:</b>	Grid
<b>Reference Well:</b>	SLW Ranch State BB06-652	<b>Survey Calculation Method:</b>	Minimum Curvature
<b>Well Error:</b>	0.0 ft	<b>Output errors are at</b>	2.00 sigma
<b>Reference Wellbore</b>	Original Drilling	<b>Database:</b>	EDMP
<b>Reference Design:</b>	Plan 1	<b>Offset TVD Reference:</b>	Offset Datum

Reference Depths are relative to WELL @ 4639.0ft (Original Well Elev.)  
Offset Depths are relative to Offset Datum  
Central Meridian is -105.5000000

Coordinates are relative to: SLW Ranch State BB06-652  
Coordinate System is US State Plane 1983, Colorado Northern Zone  
Grid Convergence at Surface is: 0.65°

### Ladder Plot



CC - Min centre to center distance or convergent point, SF - min separation factor, ES - min ellipse separation



## Anticollision Summary Report

<b>Company:</b>	Northern Region - DJ Basin	<b>Local Co-ordinate Reference:</b>	Well SLW Ranch State BB06-652
<b>Project:</b>	Wells Ranch	<b>TVD Reference:</b>	WELL @ 4639.0ft (Original Well Elev.)
<b>Reference Site:</b>	BB Section 06	<b>MD Reference:</b>	WELL @ 4639.0ft (Original Well Elev.)
<b>Site Error:</b>	0.0 ft	<b>North Reference:</b>	Grid
<b>Reference Well:</b>	SLW Ranch State BB06-652	<b>Survey Calculation Method:</b>	Minimum Curvature
<b>Well Error:</b>	0.0 ft	<b>Output errors are at</b>	2.00 sigma
<b>Reference Wellbore</b>	Original Drilling	<b>Database:</b>	EDMP
<b>Reference Design:</b>	Plan 1	<b>Offset TVD Reference:</b>	Offset Datum

Reference Depths are relative to WELL @ 4639.0ft (Original Well Elev.  
Offset Depths are relative to Offset Datum  
Central Meridian is -105.5000000

Coordinates are relative to: SLW Ranch State BB06-652  
Coordinate System is US State Plane 1983, Colorado Northern Zone  
Grid Convergence at Surface is: 0.65°

