



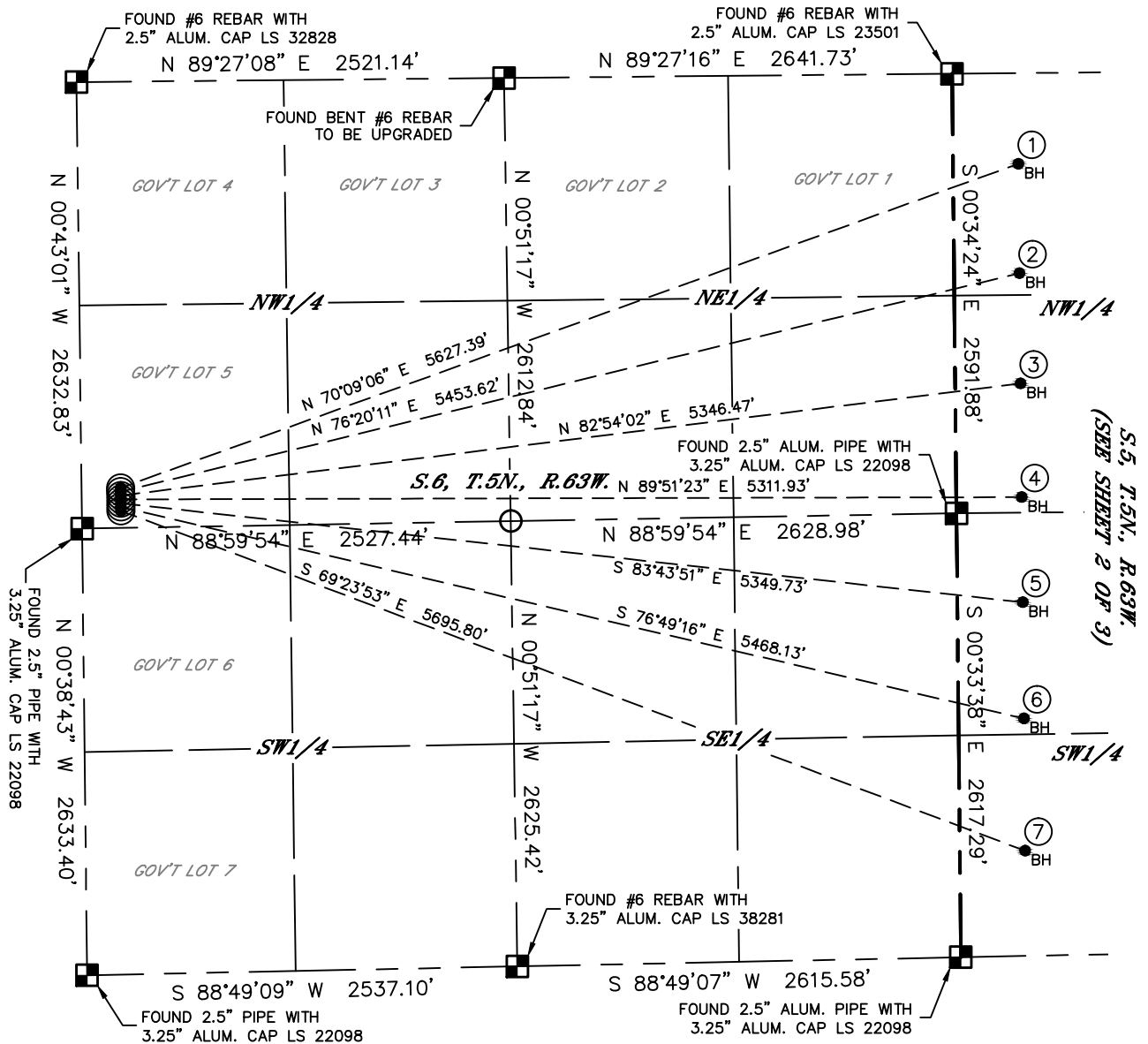
Lat40°, Inc. 6250 W. 10th Street, Unit 2, Greeley, CO 970-515-5294

MULTI-WELL PLAN

BB06-32 PAD

THIS MAP DOES NOT REPRESENT A BOUNDARY SURVEY

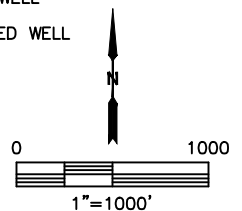
SECTION: 6
TOWNSHIP: 5N
RANGE: 63W
6TH. P.M.
WELD COUNTY, CO



#	WELL NAME	BHL FOOTAGE				BHL LAT °	BHL LONG °	BHL S-T-R
1	SLW RANCH STATE BB06-682	535	FNL	385	FWL	40.43425	-104.46882	5-5-63
2	SLW RANCH STATE BB06-672	1180	FNL	385	FWL	40.43248	-104.46883	5-5-63
3	SLW RANCH STATE BB06-662	1830	FNL	385	FWL	40.43070	-104.46883	5-5-63
4	SLW RANCH STATE BB06-652	2500	FNL	385	FWL	40.42886	-104.46884	5-5-63
5	SLW RANCH STATE BB06-642	2085	FSL	385	FWL	40.42716	-104.46884	5-5-63
6	SLW RANCH STATE BB06-631	1400	FSL	385	FWL	40.42528	-104.46884	5-5-63
7	SLW RANCH STATE BB06-619	620	FSL	385	FWL	40.42314	-104.46885	5-5-63

LEGEND

- = ALIQUOT MONUMENT AS DESCRIBED
- = CALCULATED POSITION
- = SURFACE HOLE LOCATION (SHL)
- ▲ = ENTRY POINT LOCATION (EP)
- = BOTTOM HOLE LOCATION (BHL)
- ⊙ = EXISTING WELL
- ⊙ = ABANDONED WELL





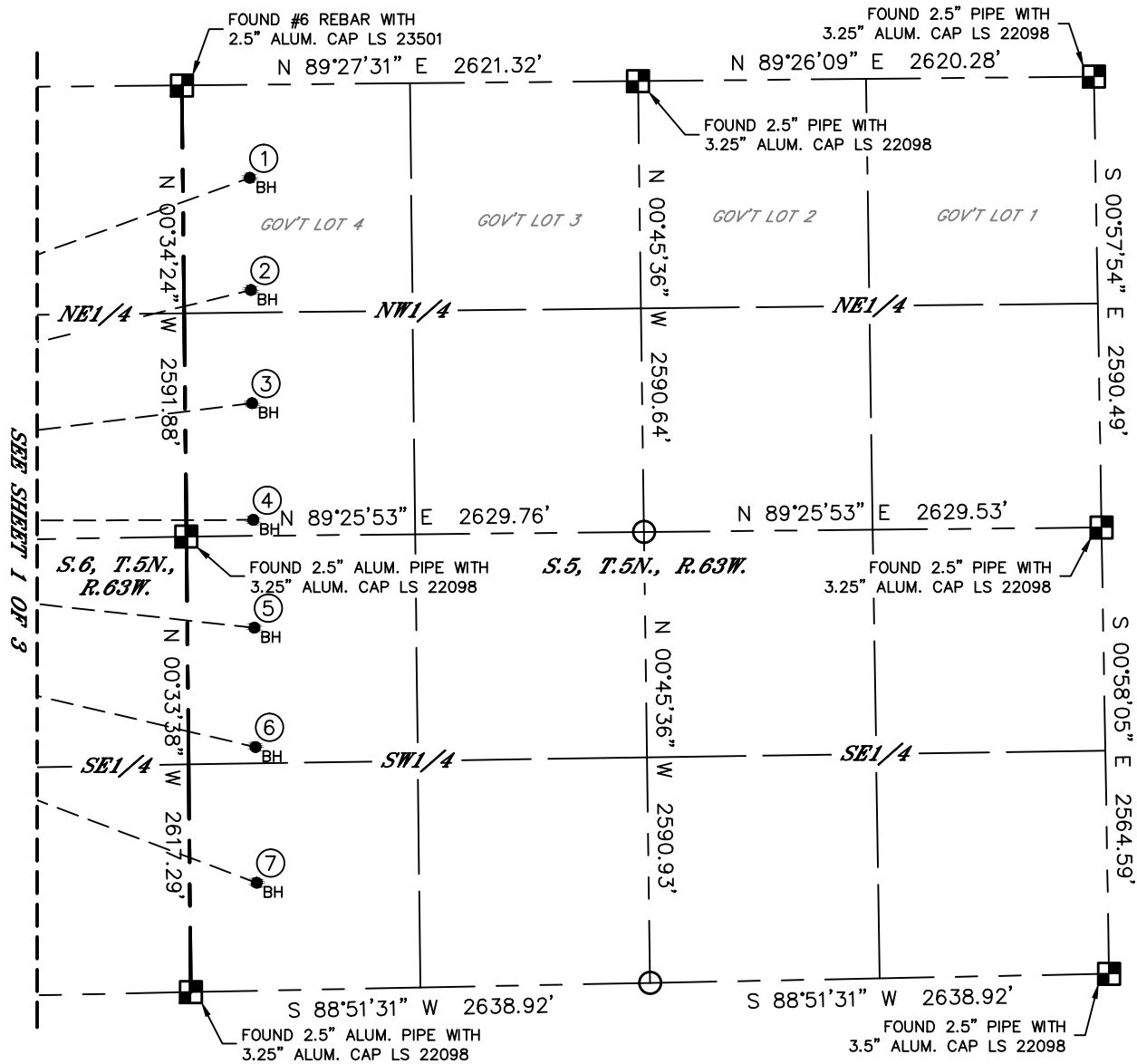
Lat40°, Inc. 6250 W. 10th Street, Unit 2, Greeley, CO 970-515-5294

MULTI-WELL PLAN

BB06-32 PAD

SECTION: 6
TOWNSHIP: 5N
RANGE: 63W
6TH. P.M.
WELD COUNTY, CO

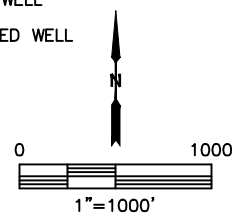
THIS MAP DOES NOT REPRESENT A BOUNDARY SURVEY



LEGEND

- = ALIQUOT MONUMENT AS DESCRIBED
- = CALCULATED POSITION
- = SURFACE HOLE LOCATION (SHL)
- ▲ = ENTRY POINT LOCATION (EP)
- = BOTTOM HOLE LOCATION (BHL)
- ⊙ = EXISTING WELL
- ⊙ = ABANDONED WELL

#	WELL NAME	BHL FOOTAGE				BHL LAT °	BHL LONG °	BHL S-T-R
1	SLW RANCH STATE BB06-682	535	FNL	385	FWL	40.43425	-104.46882	5-5-63
2	SLW RANCH STATE BB06-672	1180	FNL	385	FWL	40.43248	-104.46883	5-5-63
3	SLW RANCH STATE BB06-662	1830	FNL	385	FWL	40.43070	-104.46883	5-5-63
4	SLW RANCH STATE BB06-652	2500	FNL	385	FWL	40.42886	-104.46884	5-5-63
5	SLW RANCH STATE BB06-642	2085	FSL	385	FWL	40.42716	-104.46884	5-5-63
6	SLW RANCH STATE BB06-631	1400	FSL	385	FWL	40.42528	-104.46884	5-5-63
7	SLW RANCH STATE BB06-619	620	FSL	385	FWL	40.42314	-104.46885	5-5-63





Lat40°, Inc. 6250 W. 10th Street, Unit 2, Greeley, CO 970-515-5294

MULTI-WELL PLAN

BB06-32 PAD

SECTION: 6
TOWNSHIP: 5N
RANGE: 63W
6TH. P.M.
WELD COUNTY, CO

