

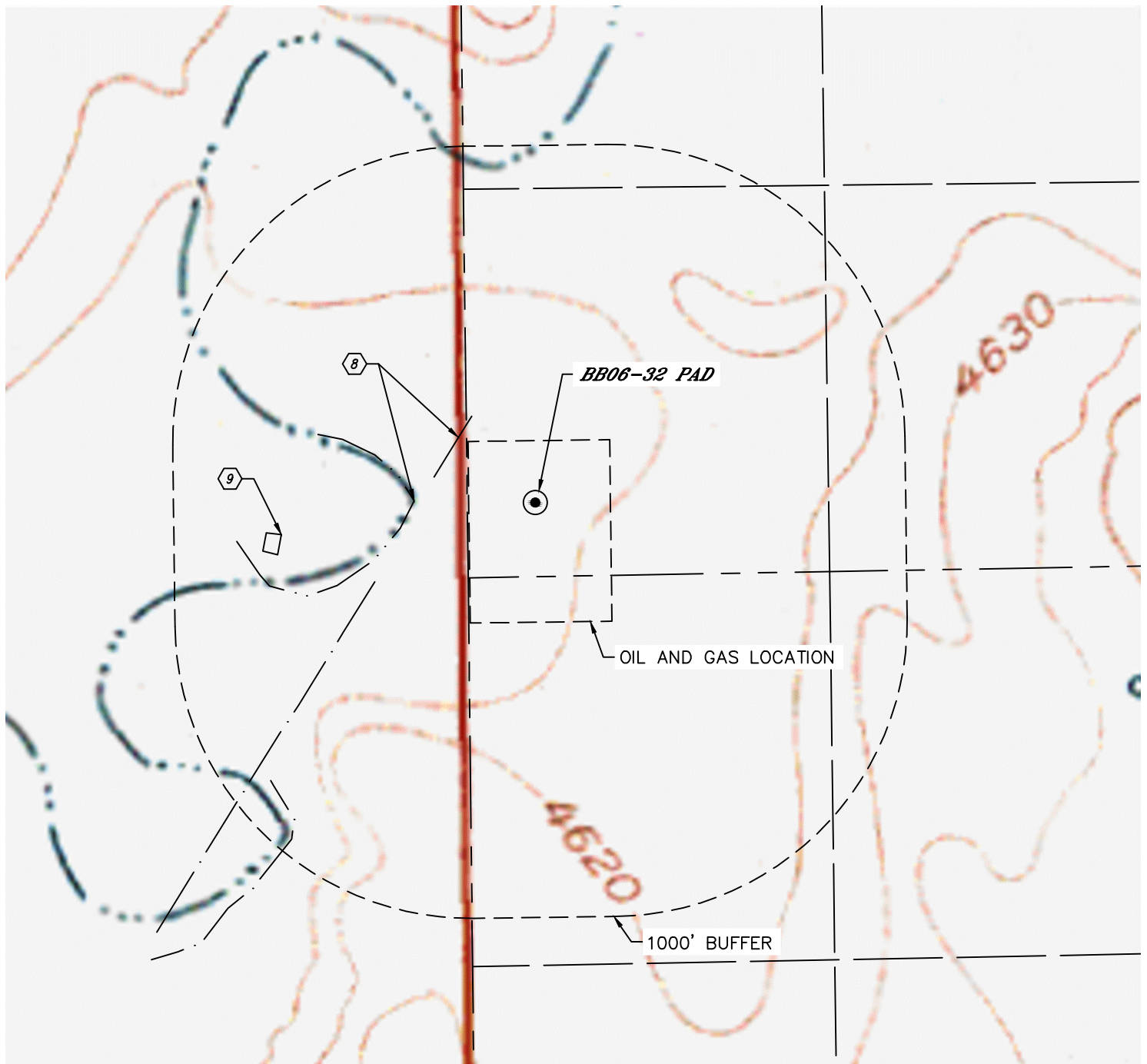


Lat40°, Inc. 6250 W. 10th Street, Unit 2, Greeley, CO 970-515-5294

# HYDROLOGY MAP

BB06-32 PAD

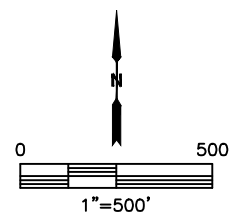
SECTION: 6  
TOWNSHIP: 5N  
RANGE: 63W  
6TH. P.M.  
WELD COUNTY, CO



DISTANCES MEASURED FROM THE EDGE OF THE OIL AND GAS LOCATION.

8 DITCH 34' NW, 184' W

9 POND 636' W



DATE: 8/24/2017  
PROJECT#: 2017024