



## **Hurt 34-11**

API# 05-123-24868  
SWSE Sec. 11-T2N-R68W  
Weld County, Colorado

## **P&A Procedure**

**FINAL**

**March 29, 2018**

Engineer:	Jeanell Ries
Director, Engineering:	Emily Miller
Workover Superintendent:	Matt Rohret
VP, DJ Operations:	John Schmidt
Attachments:	Current Wellbore Diagram Proposed Wellbore Diagram

## Procedure

1. Perform Form 17 Bradenhead Test and sample for gas, water, and oil per COGCC regulation (if not performed within the last 60 days).
2. Submit electronic Form 42 to COGCC 48 hours prior to MIRU. Notify surface land and community relations 1 week prior to MIRU.
3. Submit form for Ground Disturbance Permit. Get One Call.
4. Rig supervisor to notify Automation and Production Department. Confirm that flowlines were removed with Integrity Department. Confirm with engineer that surface land and community relations have been notified.
5. Hold a pre-job safety meeting. Discuss all aspects of the procedure with any involved personnel. Identify and address any safety concerns before the job begins.
6. Contact surveyor to acquire as-built surface location if not already done.
7. MIRU workover unit. ND wellhead, NU BOP.
8. TOOH w/tubing.
9. RIH w/slickline and run gyro. POOH.
10. RIH with wireline and set CIBP @ ~7770' (50-100' of top J Sand perf, between collars).
11. RIH w/dump bailer & dump 2 sx G Neat cmt on top of CIBP. POOH with dump bailer.
12. RIH with wireline and set CIBP @ ~7100' (50-100' of top Niobrara perf, between collars).
13. RIH w/dump bailer & dump 2 sx G Neat cmt on top of CIBP. POOH with dump bailer.
14. TIH with tubing to 5100' and pump 25 sx G Neat balanced plug (at least 100' cement above and below stage tool). TOOH.
15. Cut 4-1/2" casing at 1800' with jet cutter. Pull casing with spear to first joint, remove casing slips. Circulate.
16. Spot 75 sx balanced G Neat stub plug.
17. Do not proceed without COGCC Engineer approval if there is any pressure or evidence of gas migration (additional balanced cement plugs would be added to procedure).
18. Trip out of hole laying down casing to 850'.
19. Spot balanced MigraSeal (or similar) cement plug 850'-550'.
20. TOOH, laying down remainder of 4-1/2" casing.
21. RU wireline. RIH and tag TOC with gauge ring. Verify TOC is at least 100' inside 8-5/8" casing shoe. Set CIBP above top of cement. Dump bail 2 sx cement on top of CIBP.
22. TIH to spot balanced Type III cement plug from 60' to surface. TOOH laying down all tubing. Top off as necessary.
23. Contact EHS to FLIR wellhead to confirm no gas leaks/vapors. Safe FLIR video in wellfile.

24. ND BOP, RDMO pulling unit.
25. Per ground disturbance procedure/policy, excavate around wellhead. Notify Environmental Department for surface review and inspection while digging.
26. Cut off casing 4 ft below ground level.
27. Weld on metal plate and dry hole marker.
28. Restore surface location.
29. Ensure all pressure charts, CBLs, cement and wireline tickets are emailed to the office for subsequent reporting. Emails shall be sent to Production Engineer, Workover Coordinator, and Production Technician.
30. Submit Form 6 Subsequent Report of Abandonment documenting the P&A to COGCC.

# Attachment #1 – Current Wellbore Diagram



## WELLBORE DIAGRAM Crestone Peak Resources

CURRENT

3/26/2018

JR

[Hurt 34-11](#)

[Lat,Long: 40.147325°, -104.968741°](#)

SWSE Sec 11 2N68W

Vertical Well

Weld County, CO

[API 05-123-24868](#)

### Formation Tops

Base of Arapahoe

MD

N/A

K.B.= 4,883'

G.L.= 4,868'

Base of Fox Hills  
(per DWR)

175'

Surface cement: Surface-707'  
w/325 sx cmt

8-5/8" csg set @ 707' in 12-1/4" OH

Sussex

4,180'

2nd Stage Cement: 3730-4996' (11/12/2007 CBL)  
w/320 sx via stage tool @ 4996'

Production Cement: Cement of varying quality 6370'-TD (11/12/2007 CBL)  
w/280 sx cmt

Niobrara

7,118'

Nio/Codell Perfs: 7176-7412'  
Frac'd on initial completion

Codell

7,390'

2-3/8" 4.7# 8rd J55 tbq set @ 7798'

J Sand

7,824'

J Sand Perfs: 7830-7856'  
Frac'd on initial completion

4-1/2" csg set @ 7986' in 7-7/8" OH

PBTD @ 7930'  
TD @ 7993'

### WELL HISTORY / NOTES:

Spud 10/29/2007 - J Sand, Codell & Nio completion

02/2010 - tagged (sand?) @ 7847, cleaned out to 7916', set RBP @ 7050'

05/2010 - release and lay down RBP, land tbq @ 7798', swab

12/2014 - W/H upgraded to 5K

Shannon/Sussex non-productive within 1 mi: 05-123-19893 & 05-123-08592

Sh/sx wells within 1 mi: 05-123-19893 & 05-123-08592 (neither produced >1 yr before P&A)

Field copy gyro on network, get final copy to send to CO

Deepest Water Well w/in 1 mi: 250'

## Attachment #2 – Proposed Plugged Wellbore Diagram



### WELLBORE DIAGRAM Crestone Peak Resources

**PROPOSED**  
**P&A**

3/27/2018

JR

Hurt 34-11

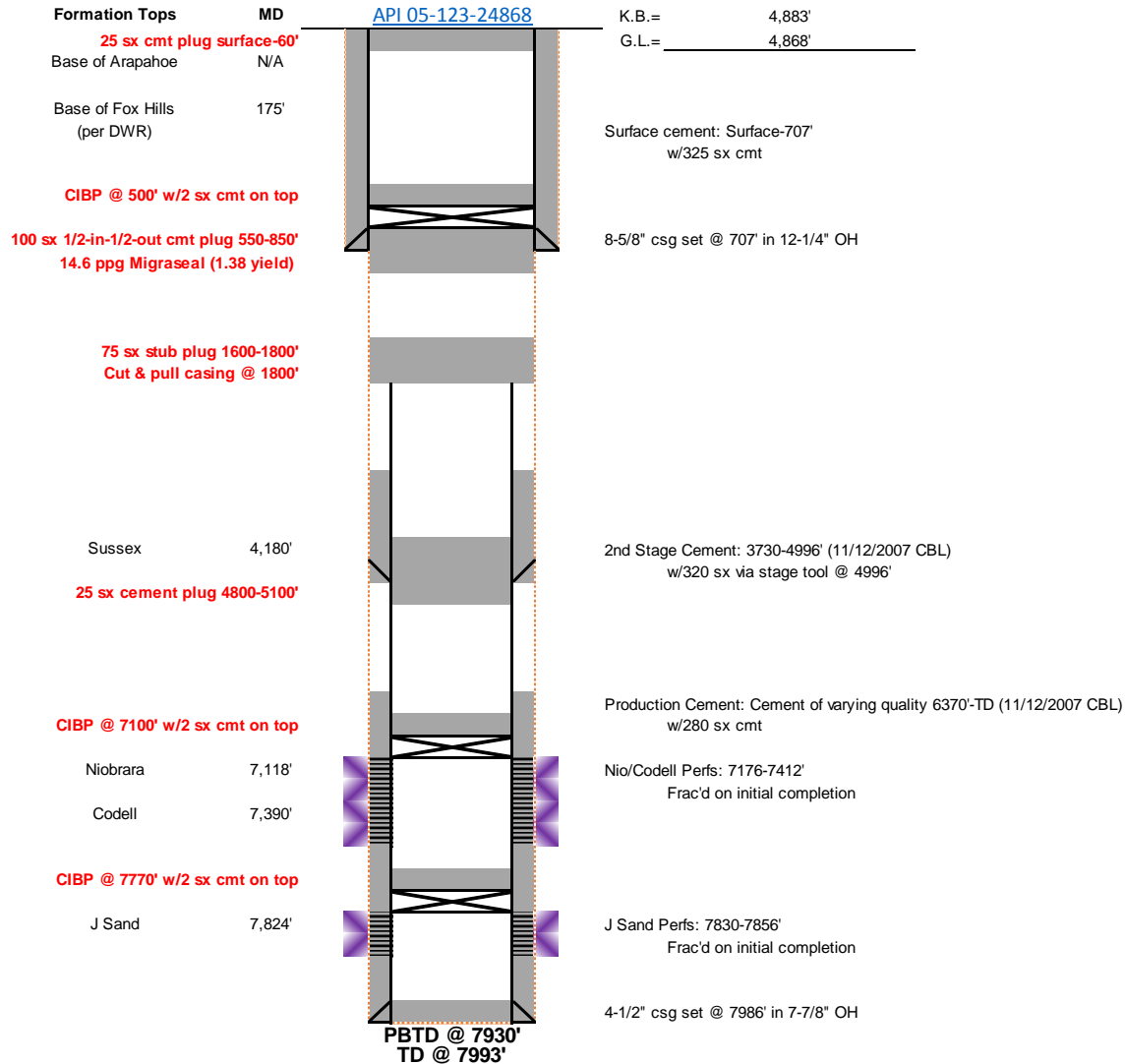
Lat,Long: 40.147325°, -104.968741°

SWSE Sec 11 2N68W

Vertical Well

Weld County, CO

API 05-123-24868



#### WELL HISTORY / NOTES:

Spud 10/29/2007 - J Sand, Codell & Nio completion  
02/2010 - tagged (sand?) @ 7847, cleaned out to 7916', set RBP @ 7050'  
05/2010 - release and lay down RBP, land tbq @ 7798', swab  
12/2014 - W/H upgraded to 5K

Shannon/Sussex non-productive within 1 mi: 05-123-19893 & 05-123-08592  
Sh/sx wells within 1 mi: 05-123-19893 & 05-123-08592 (neither produced >1 yr before P&A)  
Field copy gyro on network, get final copy to send to CO  
Deepest Water Well w/in 1 mi: 250'