

HALLIBURTON

iCem[®] Service

TERRA ENERGY PARTNERS

For: Terra Energy Partners

WARE SR 334-12

API # 05-045-23451-00

TEP WARE SR 334-12

Job Date: Sunday, December 17, 2017

Sincerely,

Grand Junction Cement Engineering

1.0 Real-Time Job Summary

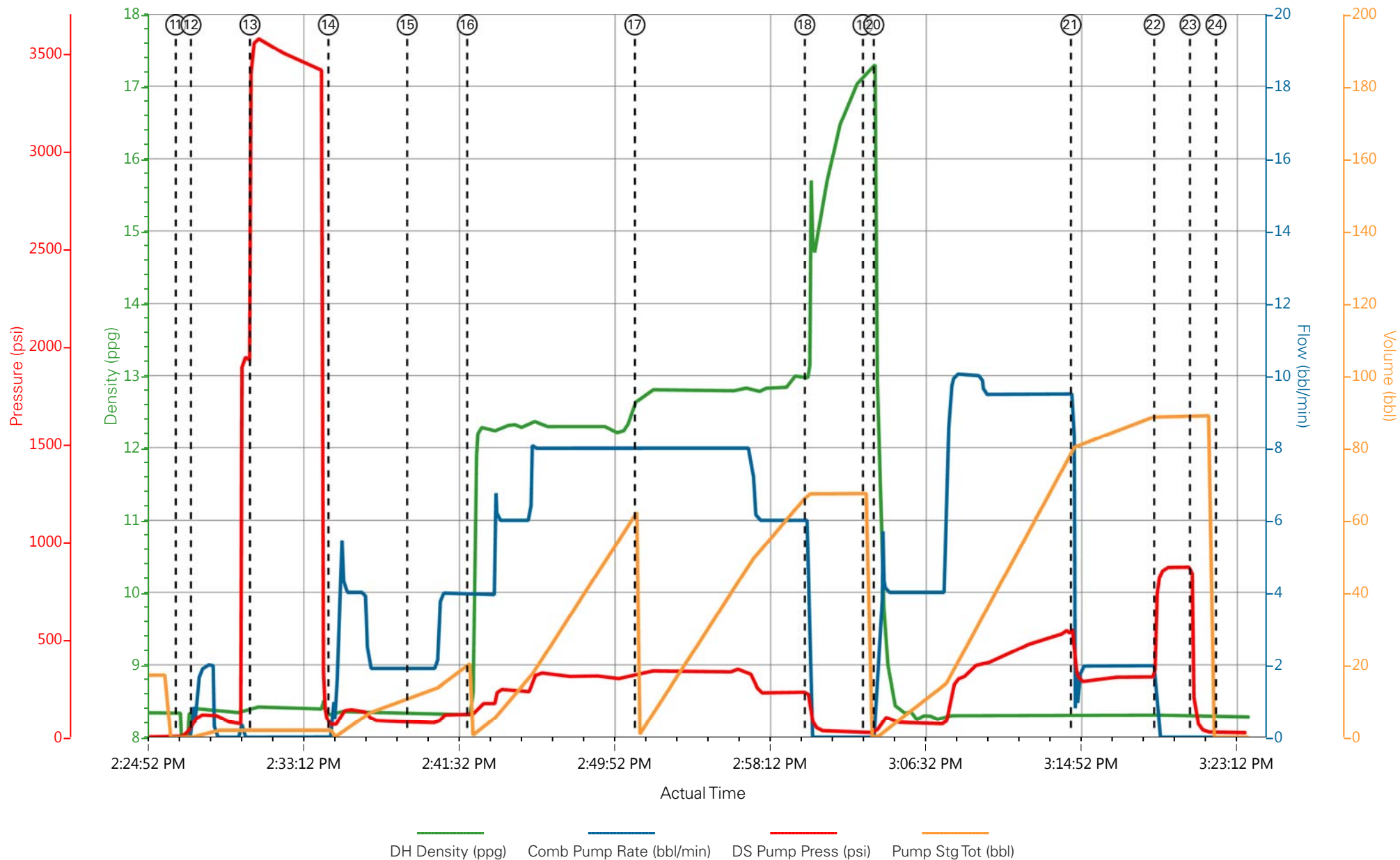
1.1 Job Event Log

Type	Seq No.	Graph Label	Date	Time	Source	Downhole Density (ppg)	Combined Pump Rate (bbl/min)	Driv-Side Pump Pressure (psi)	Pump Stage Total (bbl)	Comments
Event	1	Call Out	12/17/2017	05:00:00	USER					ON LOCATION TIME 10:30
Event	2	Pre-Convoy Safety Meeting	12/17/2017	07:30:00	USER					JOURNEY CREATED - ALL HES INVOLVED IN SAFETY MEETING
Event	3	Crew Leave Yard	12/17/2017	07:45:00	USER					1-F-550 PICKUP, 1-660 BULK TRUCK, ELITE PUMP TRUCK WAS LEFT IN THE FIELD FROM PREVIOUS JOB
Event	4	Arrive At Loc	12/17/2017	09:30:00	USER					HES ARRIVED 1-HOUR EARLY
Event	5	Assessment Of Location Safety Meeting	12/17/2017	09:45:00	USER					RIG WAS GETTING READY TO START RUNNING CASING
Event	6	Pre-Rig Up Safety Meeting	12/17/2017	10:00:00	USER					JSA FILLED OUT - ALL HES IN ATTENDANCE FOR SAFETY MEETING
Event	7	Rig-Up Equipment	12/17/2017	10:05:00	USER					RIG-UP IRON TO THE RIG FLOOR, WATER HOSES TO RIG UPRIGHTS AND BULK TRUCK TO PUMP TRUCK
Event	8	Rig-Up Completed	12/17/2017	11:00:00	USER					COMPLETED SAFELY
Event	9	Pre-Job Safety Meeting	12/17/2017	12:45:00	USER					ALL HES, RIG CREW AND COMPANY REP IN ATTENDANCE
Event	10	Well Info/Water Test	12/17/2017	12:50:00	USER					TD: 1148FT TP: 1138.76FT SJ: 44.09FT OH: 13.5" CSG: 9.625 32.3# H-40 - WATER TEST: TEMP- 65 CHLORIDES- 0 PH-7
Event	11	Start Job	12/17/2017	14:26:31	COM5					START JOB
Event	12	Fill Lines	12/17/2017	14:27:20	USER	8.34	2	116	2	FILL LINES TO PRESSURE TEST
Event	13	Test Lines	12/17/2017	14:30:30	COM5			3575		TEST LINES TO 3575 PSI - PRESSURE TEST OK
Event	14	Fresh Water Spacer	12/17/2017	14:34:42	COM5	8.34	4	120	20	20 BBL FRESH WATER SPACER PUMPED AT 4BPM PRESSURE

WAS 120 PSI

Event	15	Check weight	12/17/2017	14:38:55	COM5					VERIFIED WEIGHT OF FIRST TUB OF CEMENT
Event	16	Pump Lead Cement	12/17/2017	14:42:08	COM5	12.3	8	355	52.9	125 SKS OF VARICEM CEMENT (52.9BBLs) 12.3PPG 2.38YIELD 13.77GAL/SK WEIGHT OF CEMENT VERIFIED VIA PRESSURIZED MUD SCALES THROUGHOUT LEAD CEMENT
Event	17	Pump Tail Cement	12/17/2017	14:51:07	COM5	12.8	8	381	65.7	175 SKS OF VARICEM CEMENT (65.7BBLs) 12.8PPG 2.11YIELD 11.78GAL/SK WEIGHT OF CEMENT VERIFIED VIA PRESSURIZED MUD SCALES THROUGHOUT TAIL CEMENT
Event	18	Shutdown	12/17/2017	15:00:13	USER					SHUTDOWN END OF CEMENT - HES WASHED UP ON TOP OF THE PLUG - READY TANKS FOR DISPLACEMENT
Event	19	Drop Top Plug	12/17/2017	15:03:20	USER					TOP PLUG AWAY NO PROBLEMS
Event	20	Pump Displacement	12/17/2017	15:03:55	COM5	8.34	9.5	550	76.3	FRESH WATER DISPLACEMENT
Event	21	Slow Rate	12/17/2017	15:14:28	USER	8.34	2	280	10	SLOW RATE TO BUMP THE PLUG - PRESSURE PRIOR TO SLOWING WAS 550 PSI AT 9.5BPM
Event	22	Bump Plug	12/17/2017	15:18:56	USER	8.34	2	334	86.3	PLUG BUMPED AT CALCULATED DISPLACEMENT - PLUG BUMPED AT 334 PSI TOOK TO 870 PSI
Event	23	Check Floats	12/17/2017	15:20:51	USER			870		FLOATS HELD .5 BBL BACK TO THE TANKS - 20 BBLs OF CEMENT TO SURFACE - RIG USED 40 POUNDS OF SUGAR
Event	24	End Job	12/17/2017	15:22:15	COM5					THANK YOU FOR CHOOSING HALLIBURTON CEMENT CARL KUKUS AND CREW
Event	25	Pre-Rig Down Safety Meeting	12/17/2017	15:25:00	USER					JSA REVIEWED, ALL HES INVOLVED IN SAFETY MEETING
Event	26	Rig-Down Equipment	12/17/2017	15:30:00	USER					WASH UP AND BLOW DOWN PUMP TRUCK, RIG-DOWN ALL LINES AND EQUIPMENT
Event	27	Rig-Down Completed	12/17/2017	16:30:00	USER					COMPLETED SAFELY
Event	28	Pre-Convoy Safety Meeting	12/17/2017	16:40:00	USER					JOURNEY CREATED - ALL HES INVOLVED IN SAFETY MEETING
Event	29	Crew Leave Location	12/17/2017	16:50:00	USER					1-F-550 PICKUP, 1-ELITE PUMP TRUCK, 1-660 BULK TRUCK

TEP - WARE SR 334-12 - 9045117265 - 9 5/8" SURFACE



- | | | | | | | | |
|-----------------------------|-------------------|---|--------------------|--------------------------|--------------|----------------------|----------------|
| ① Call Out | ③ Crew Leave Yard | ⑤ Assessment Of Location Safety Meeting | ⑦ Rig-Up Equipment | ⑨ Pre-Job Safety Meeting | ⑪ Start Job | ⑬ Test Lines | ⑮ Check weight |
| ② Pre-Convoy Safety Meeting | ④ Arrive At Loc | ⑥ Pre-Rig Up Safety Meeting | ⑧ Rig-Up Completed | ⑩ Well Info/Water Test | ⑫ Fill Lines | ⑭ Fresh Water Spacer | ⑯ Pump Lead |

▼ HALLIBURTON | iCem® Service

Created: 2017-12-17 10:53:54, Version: 4.2.393

Edit

Customer: TERRA ENERGY PARTNERS

Job Date: 12/17/2017 1:26:00 PM

Well: WARE SR 334-12

Representative: Darrell/Clay

Sales Order #: 904511726

Elite 4: Lewis/Kukus

TEP - WARE SR 334-12 - 9045117265 - 9 5/8" SURFACE

