

HALLIBURTON

iCem[®] Service

TERRA ENERGY PARTNERS

For: Terra Energy

SR 534-12 Surface PJR

API# 05-045-23457-00

Ware SR 534-12 Surface

Job Date: Friday, January 12, 2018

Sincerely,

Grand Junction Cement Engineering

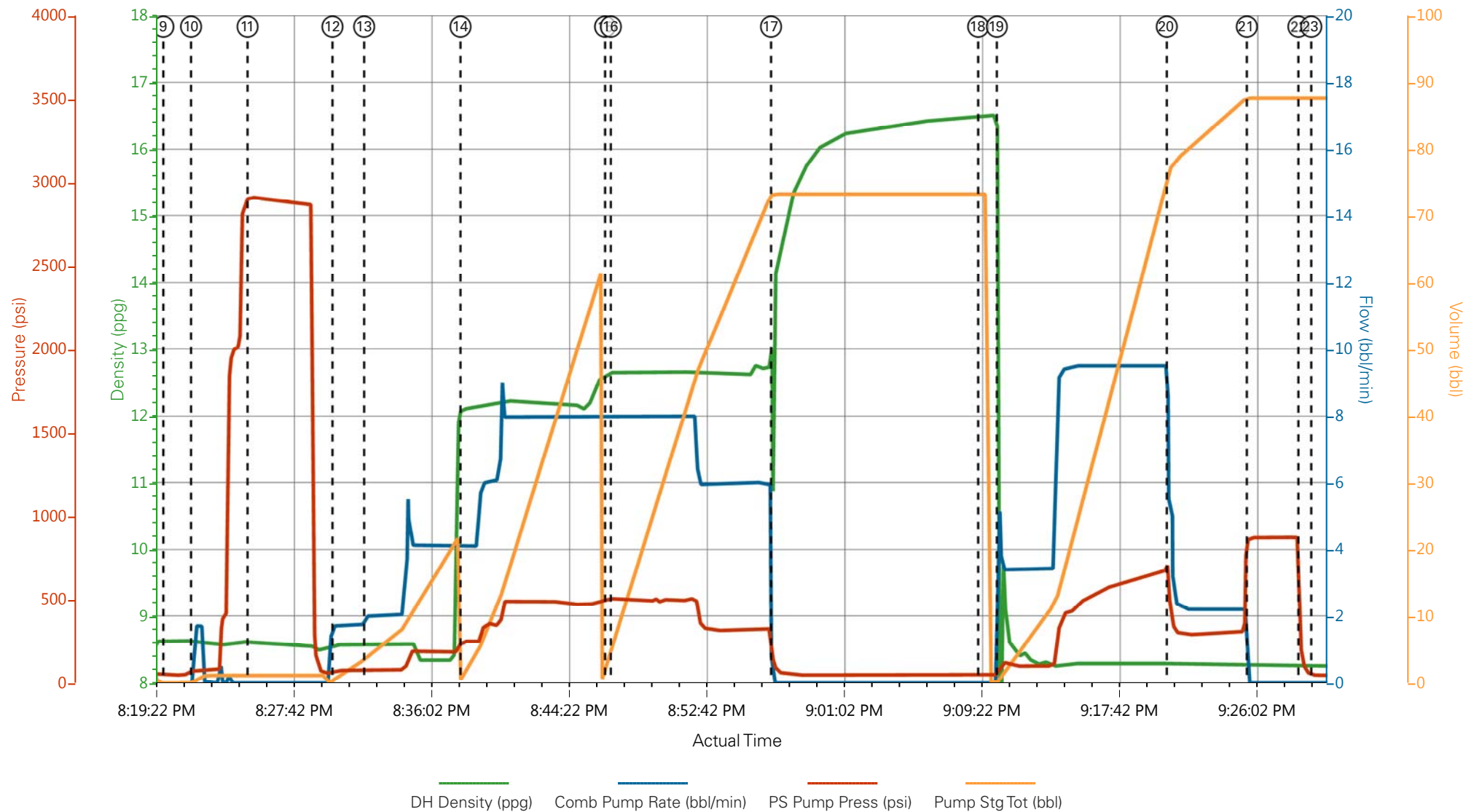
1.0 Real-Time Job Summary

1.1 Job Event Log

Type	Seq. No.	Graph Label	Date	Time	Source	Pass-Side Pump Pressure (psi)	Downhole Density (ppg)	Combined Pump Rate (bbl/min)	Pump Stage Total (bbl)	Comments
Event	1	Call Out	1/12/2018	09:45:00	USER					REQUESTED ON LOCATION @ 1500
Event	2	Pre-Convoy Safety Meeting	1/12/2018	11:30:00	USER					ALL HES PRESENT
Event	3	Crew Leave Yard	1/12/2018	11:35:00	USER					1 F550, 1 PUMP TRUCK & 1 660 BULK TURCK
Event	4	Arrive At Loc	1/12/2018	14:30:00	USER					RIG RUNNING CASING
Event	5	Assessment Of Location Safety Meeting	1/12/2018	15:00:00	USER					MET WITH COMP REP AND WENT OVER NUMBERS AND JOB PROCEDURE. WALKED AROUND LOCATION AND COLLECTED WATER SAMPLE (PH- 7, CHLORIDES- 100, TEMP- 61F). COMP REP WAS OFFERED SDS FOR ALL CHEMICLES USED BY HES.
Event	6	Pre-Rig Up Safety Meeting	1/12/2018	17:30:00	USER					ALL HES PRESENT
Event	7	Rig-Up Equipment	1/12/2018	17:45:00	USER					HES RIGGED UP EQUIPMENT WITHOUT ENTERING RED ZONE.
Event	8	Pre-Job Safety Meeting	1/12/2018	20:00:00	USER					ALL HES AND RIG CREW PRESENT
Event	9	Start Job	1/12/2018	20:20:00	COM3					TD 1117', TP 1111', SJ 44.5', OH 13.5", CSG 9.625" 32.3#, MUD 9.4 PPG. RIG CIRCULATED WELL AT 400 GPM, 250 PSI.
Event	10	Prime Pumps	1/12/2018	20:21:40	COM3	76.00	8.30	1.00	2.00	8.33 PPG FRESH WATER
Event	11	Test Lines	1/12/2018	20:25:05	COM3	2909.00	8.30	0.50	0.5	ALL LINES HELD PRESSURE AT 2909 PSI
Event	12	Pump Spacer 1	1/12/2018	20:30:14	COM3	174.00	8.37	4.00	19.6	8.33 PPG FRESH WATER (20 BBL)

Event	13	Check weight	1/12/2018	20:32:09	COM3					WEIGHT VERIFIED VIA PRESSUREIZED MUD SCALES
Event	14	Pump Lead Cement	1/12/2018	20:37:59	COM3	247.00	12.30	8.00	53.0	VARICEM CEMENT 125 SKS (53 BBLS), 12.3 PPG, 2.38 FT3/SK, 13.77 GAL/SK
Event	15	Pump Tail Cement	1/12/2018	20:46:44	COM3	504.00	12.84	8.00	66.0	VARICEM CEMENT 175 SKS (66 BBLS), 12.8 PPG, 2.11 FT3/SK, 11.78 GAL/SK.
Event	16	Check weight	1/12/2018	20:47:05	COM3					WEIGHT VERIFIED VIA PRESSUREIZED MUD SCALES
Event	17	Shutdown	1/12/2018	20:56:47	USER					END OF CEMENT, HES WAITED ON RIG TO CHANGE OUT CELLAR PUMPS BEFORE DISPLACEMENT.
Event	18	Drop Plug	1/12/2018	21:09:20	USER					PLUG WENT, VERIFIED BY CO REP
Event	19	Pump Displacement	1/12/2018	21:10:27	COM3	700.00	8.30	10.00	74.0	8.34 PPG FRESH WATER (84 BBLS)
Event	20	Slow Rate	1/12/2018	21:20:45	USER	309.00	8.38	2.00	10.0	SLOW RATE TO 2 BPM PER CO REP TO LAND PLUG
Event	21	Bump Plug	1/12/2018	21:25:35	USER	866.00	8.38	2.00	84.0	LAND PLUG AT 225 PSI, BROUGHT UP TO 878 PSI
Event	22	Check Floats	1/12/2018	21:28:43	USER					FLOATS HELD, .5 BBL BACK TO TRUCK
Event	23	End Job	1/12/2018	21:29:30	COM3					RETURNS THROUGHOUT JOB, 20 BBL OF CEMENT BACK TO SURFACE
Event	24	Rig-Down Equipment	1/12/2018	21:55:00	USER					ALL HES PRESENT
Event	25	Post-Job Safety Meeting (Pre Rig-Down)	1/12/2018	22:00:00	USER					ALL HES PRESENT
Event	26	Pre-Convoy Safety Meeting	1/12/2018	22:30:00	USER					ALL HES PRESENT
Event	27	Crew Leave Location	1/12/2018	22:45:00	USER					THANK YOU FOR CHOOSING HALLIBURTON CEMENT, CHRIS SMITH AND CREW

TEP - SR 534-12 - 9.625" SURFACE



- | | | | |
|---|--------------------------|---------------------|---|
| ① Call Out | ⑧ Pre-Job Safety Meeting | ⑮ Pump Tail Cement | 22 Check Floats |
| ② Pre-Convoy Safety Meeting | ⑨ Start Job | ⑯ Check weight | 23 End Job |
| ③ Crew Leave Yard | ⑩ Prime Pumps | ⑰ Shutdown | 24 Rig-Down Equipment |
| ④ Arrive At Loc | ⑪ Test Lines | ⑱ Drop Plug | 25 Post-Job Safety Meeting (Pre Rig-Down) |
| ⑤ Assessment Of Location Safety Meeting | ⑫ Pump Spacer 1 | ⑲ Pump Displacement | 26 Pre-Convoy Safety Meeting |
| ⑥ Pre-Rig Up Safety Meeting | ⑬ Check weight | 20 Slow Rate | 27 Crew Leave Location |
| ⑦ Rig-Up Equipment | ⑭ Pump Lead Cement | 21 Bump Plug | |

▼ **HALLIBURTON** | iCem® Service

Created: 2018-01-12 15:36:32, Version: 4.2.393

Edit

Customer : TERRA ENERGY LTD.

Job Date : 1/12/2018

Well : SR 534-12

Representative : DARRELL

Sales Order # : 904567506

ELITE 8 : C.SMITH/K.BENNETT

TEP - SR 534-12 - 9.625" SURFACE

