



410 17th Street, Suite 1400  
Denver, CO 80202  
(720) 440-6100 phone  
(720) 305-0804 fax

[Bonanzacrk.com](http://Bonanzacrk.com)

March 14, 2018

State of Colorado  
Oil and Gas Conservation Commission  
1120 Lincoln Street, Suite 801  
Denver, CO 80203

**RE: Proposed Wellbore Spacing Unit**  
North Platte 21-24-28HNC  
Niobrara New Drill  
NESW Section 21, Township 5N, Range 63W, 6<sup>th</sup> PM  
Weld County, Colorado

Dear Director Murphy,

Bonanza Creek Energy Operating Company, LLC. ("Bonanza Creek") is planning to drill the above captioned well in accordance with the provisions of Colorado Oil and Gas Conservation Commission (COGCC) Rule 318A.e.

Bonanza Creek's proposed wellbore spacing unit consists of:

Township 5N, Range 63W (Weld County):  
Section 21: SESW  
Section 28: E2W2

Total acres: 200ac

The 30 day notification time period has passed and we have not yet received any objections to such well locations or proposed spacing unit, therefore Bonanza Creek hereby requests the Director to approve the above mentioned well. Bonanza Creek respectfully requests the COGCC review the enclosed map illustrating the proposed wellbore spacing unit.

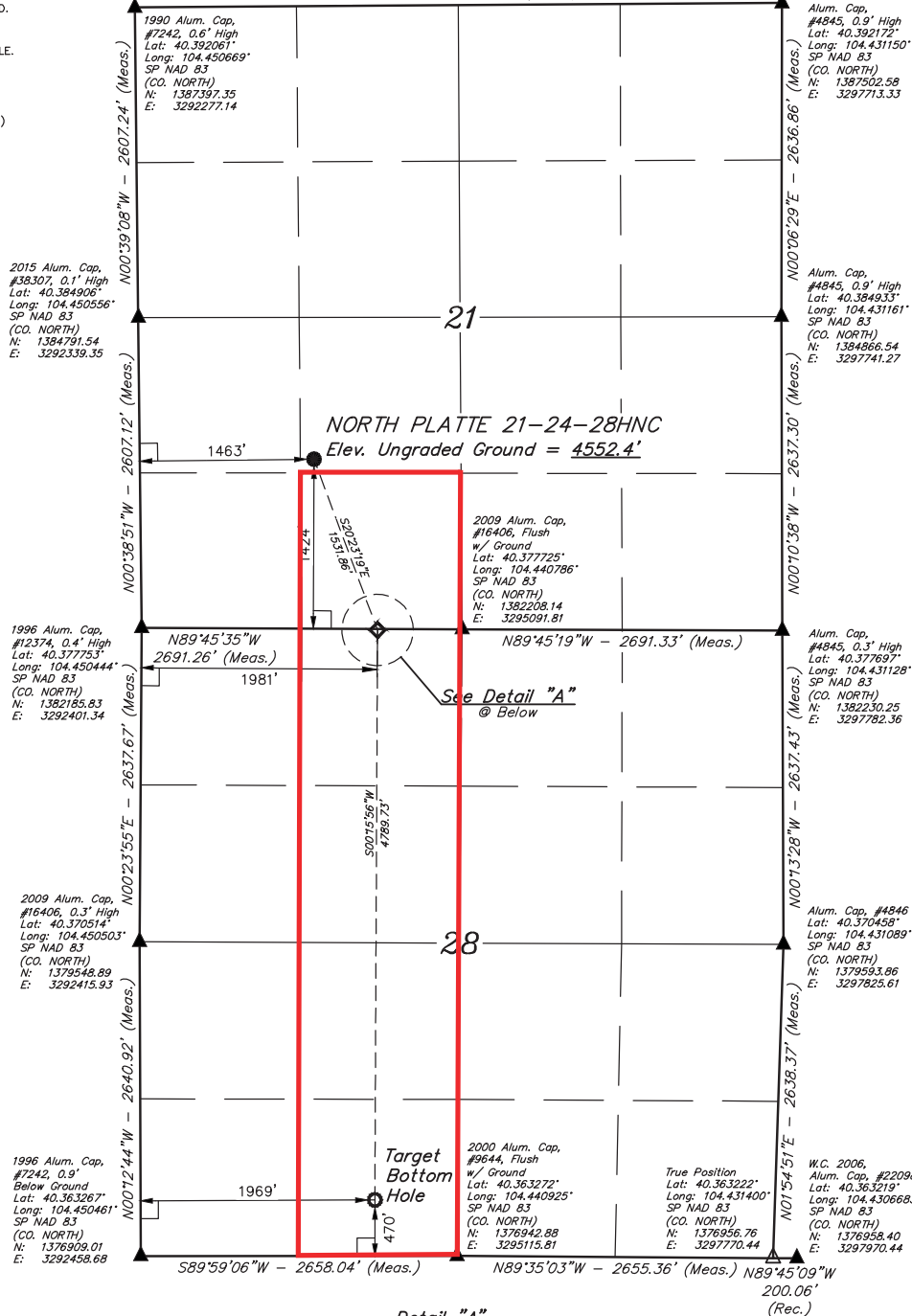
Regards,  
Bonanza Creek Energy Operating Company, LLC.

Brian Dodek, P.G.  
Manager – Environmental & Regulatory Compliance

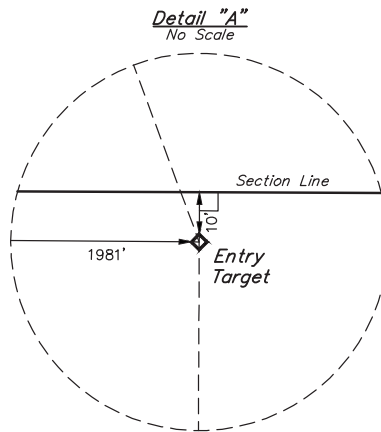
# LEGEND:

- 90° SYMBOL
- PROPOSED WELLHEAD.
- ENTRY TARGET.
- TARGET BOTTOM HOLE.
- SECTION CORNERS LOCATED. (NAD 83)
- SECTION CORNERS RE-ESTABLISHED. (Not Set on Ground.) (NAD 83)

T5N, R63W, 6th P.M.  
589°36'24"W - 5438.62' (Meas.)



PDOP = 1.2	
<b>NAD 83 (SURFACE LOCATION)</b>	
LATITUDE = 40°22'53.92" (40.381644)	
LONGITUDE = 104°26'42.91" (104.445254)	
<b>STATE PLANE NAD 83 (CO. NORTH)</b>	
N: 1383620.99 E: 3293830.40	
<b>NAD 83 (ENTRY TARGET)</b>	
LATITUDE = 40°22'39.74" (40.377705)	
LONGITUDE = 104°26'36.01" (104.443336)	
<b>STATE PLANE NAD 83 (CO. NORTH)</b>	
N: 1382192.26 E: 3294381.82	
<b>NAD 83 (TARGET BOTTOM HOLE)</b>	
LATITUDE = 40°21'52.42" (40.364560)	
LONGITUDE = 104°26'36.26" (104.443405)	
<b>STATE PLANE NAD 83 (CO. NORTH)</b>	
N: 1377403.92 E: 3294419.41	



CERTIFICATE OF REGISTRATION  
THIS IS TO CERTIFY THAT THE ABOVE NOTED SURVEY WAS MADE BY ME AND UNDER MY SUPERVISION AND THAT THE SAME ARE TRUE AND CORRECT TO THE BEST OF MY KNOWLEDGE AND BELIEF.



**BASIS OF BEARINGS**  
BASIS OF BEARINGS IS A G.P.S. OBSERVATION  
**BASIS OF ELEVATION**  
USGS COOPERATIVE BASE NETWORK CONTROL STATION, DESIGNATION "M414". NGS DATA SHEET LISTS THE NAVD 88 ELEVATION AS BEING 4600.58 FEET.



**UELS, LLC**  
Corporate Office \* 85 South 200 East  
Vernal, UT 84078 \* (435) 789-1017



REV: 2 01-29-18 D.J.W. (SURFACE MOVE & LATERAL CHANGE)

**BONANZA CREEK ENERGY OPERATING COMPANY, LLC**  
**NORTH PLATTE 21-24-28HNC**  
**NE 1/4 SW 1/4, SECTION 21, T5N, R63W, 6th P.M.**  
**WELD COUNTY, COLORADO**  
SURVEYED BY CHAD MEIERS, O.R. 01-10-18 SCALE  
DRAWN BY M.F.D. 11-03-16 1" = 1000'  
**WELL LOCATION PLAT**